

Supplementary figures for  
**Cisplatin-loaded tobacco mosaic virus for ovarian cancer treatment**

Authors:

Zhongchao Zhao<sup>1,2</sup>, Andrea Simms<sup>1</sup>, Nicole F. Steinmetz<sup>1,2,3,4,5,6 #</sup>

<sup>1</sup>Department of NanoEngineering, University of California, San Diego, 9500 Gilman Dr., La Jolla, CA, 92093 USA

<sup>2</sup>Center for Nano-ImmunoEngineering, University of California, San Diego, 9500 Gilman Dr., La Jolla, CA, 92093 USA

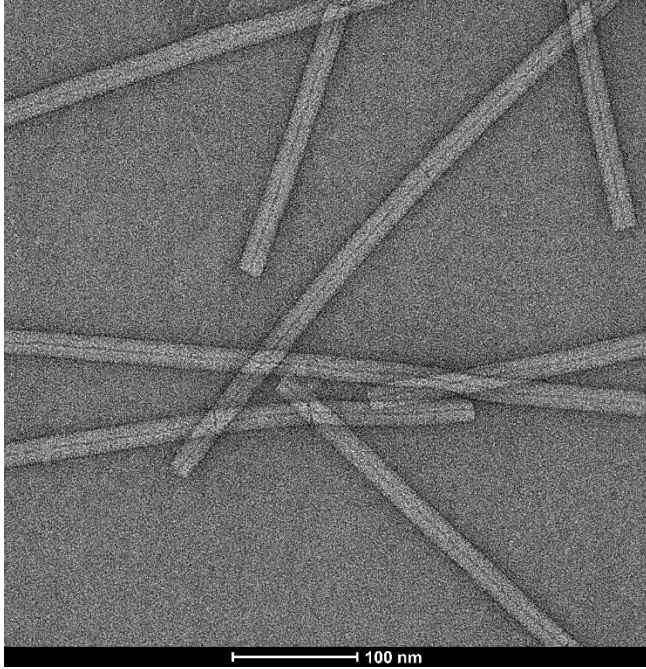
<sup>3</sup>Department of Bioengineering, University of California, San Diego, 9500 Gilman Dr., La Jolla, CA, 92093 USA

<sup>4</sup>Department of Radiology, University of California, San Diego, 9500 Gilman Dr., La Jolla, CA, 92093 USA

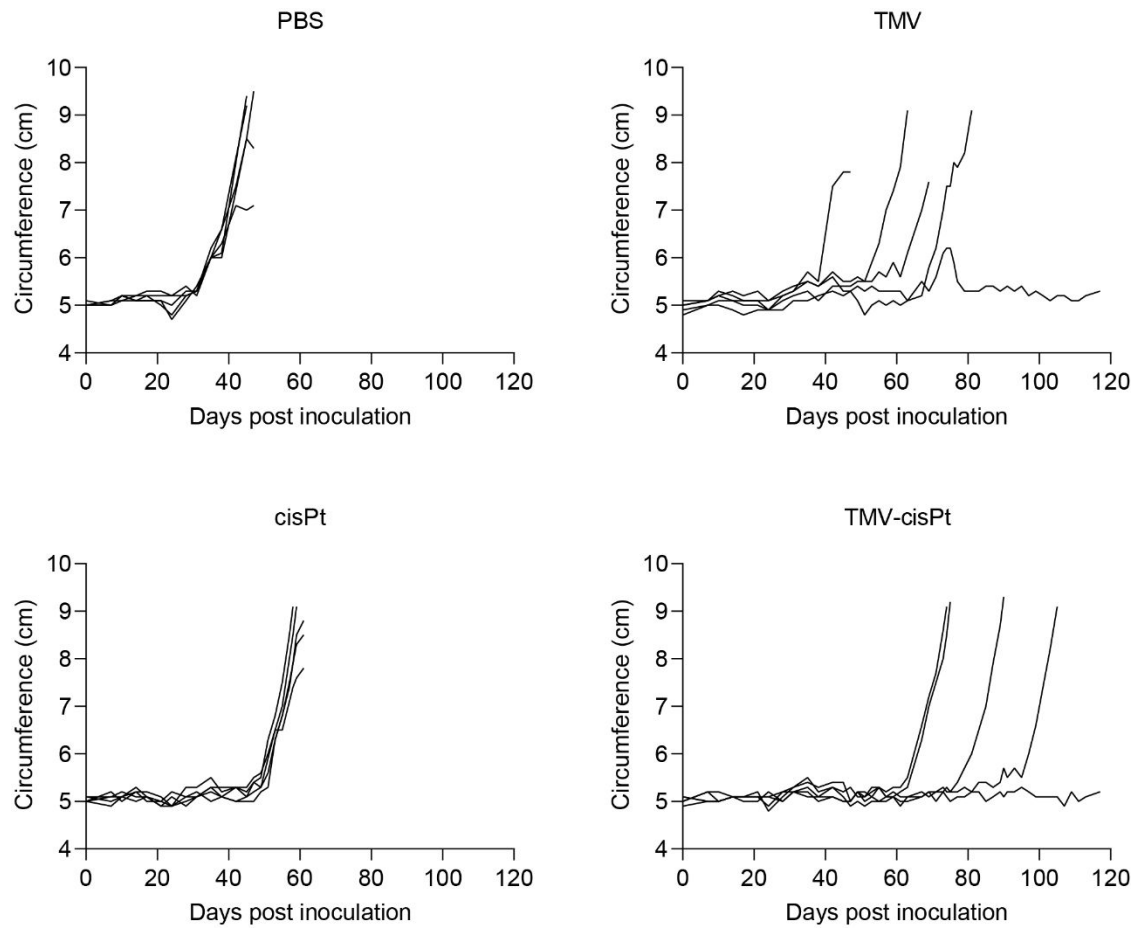
<sup>5</sup>Institute for Materials Discovery and Design, University of California, 9500 Gilman Dr., La Jolla, CA, 92093 USA

<sup>6</sup>Moore's Cancer Center, University of California, San Diego, 9500 Gilman Dr., La Jolla, CA, 92093 USA

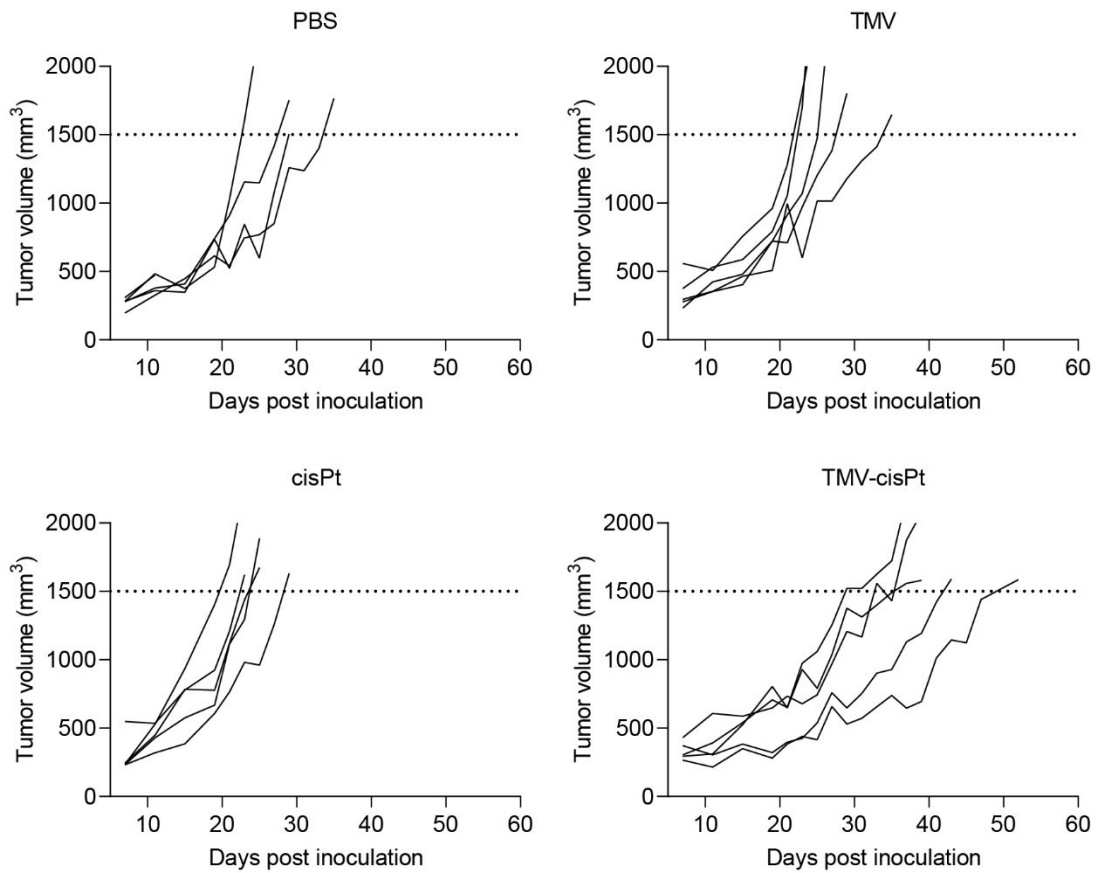
# Corresponding author: [nsteinmetz@ucsd.edu](mailto:nsteinmetz@ucsd.edu)



**Figure S1.** TEM image of native TMV.



**Figure S2.** Individual tumor progression in circumference in each treatment group for the I.P. ID8-Defb29/Vegf-a-Luc tumor model in C57BL6 mice.



**Figure S3.** Individual tumor volume monitoring in each treatment group for the S.C. A2780 tumor model in NCR nu/nu nude mice.