

Expanded View Figures

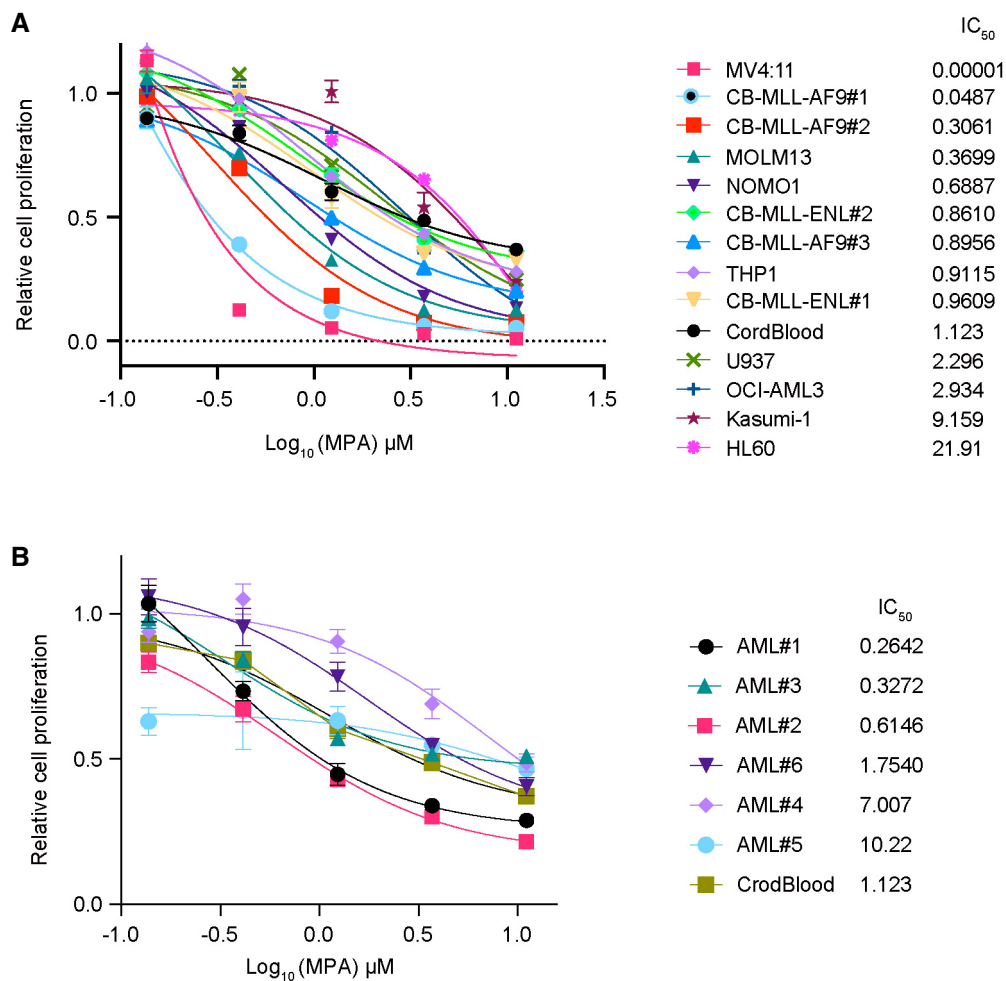


Figure EV1. The effect of IMPDH inhibitors on human myeloid leukemia cells *in vitro*.

A, B Cell viability assays were performed using WST-1. Human CB CD34⁺ cells and human AML cell lines (with MLL-fusions: MV4:11, MOLM13, NOMO1 and THP1, without MLL-fusions: HL60, Kasumi-1, OCI-AML3 and U937), CB cells expressing MLL-AF9 (CB-MA9#1, 2, 3) or MLL-ENL (CB-MLL-ENL#1, 2) (A) and PDX cell lines with or without MLL-fusions (AML#1, 2, 3 or AML#4, 5, 6) (B) were treated with titrating doses of MPA (1–100 μ M) for 72 h in three technical replicates. IC₅₀ values for each experiment are summarized in Fig 1B and C. Data are shown as mean \pm SEM.

Source data are available online for this figure.

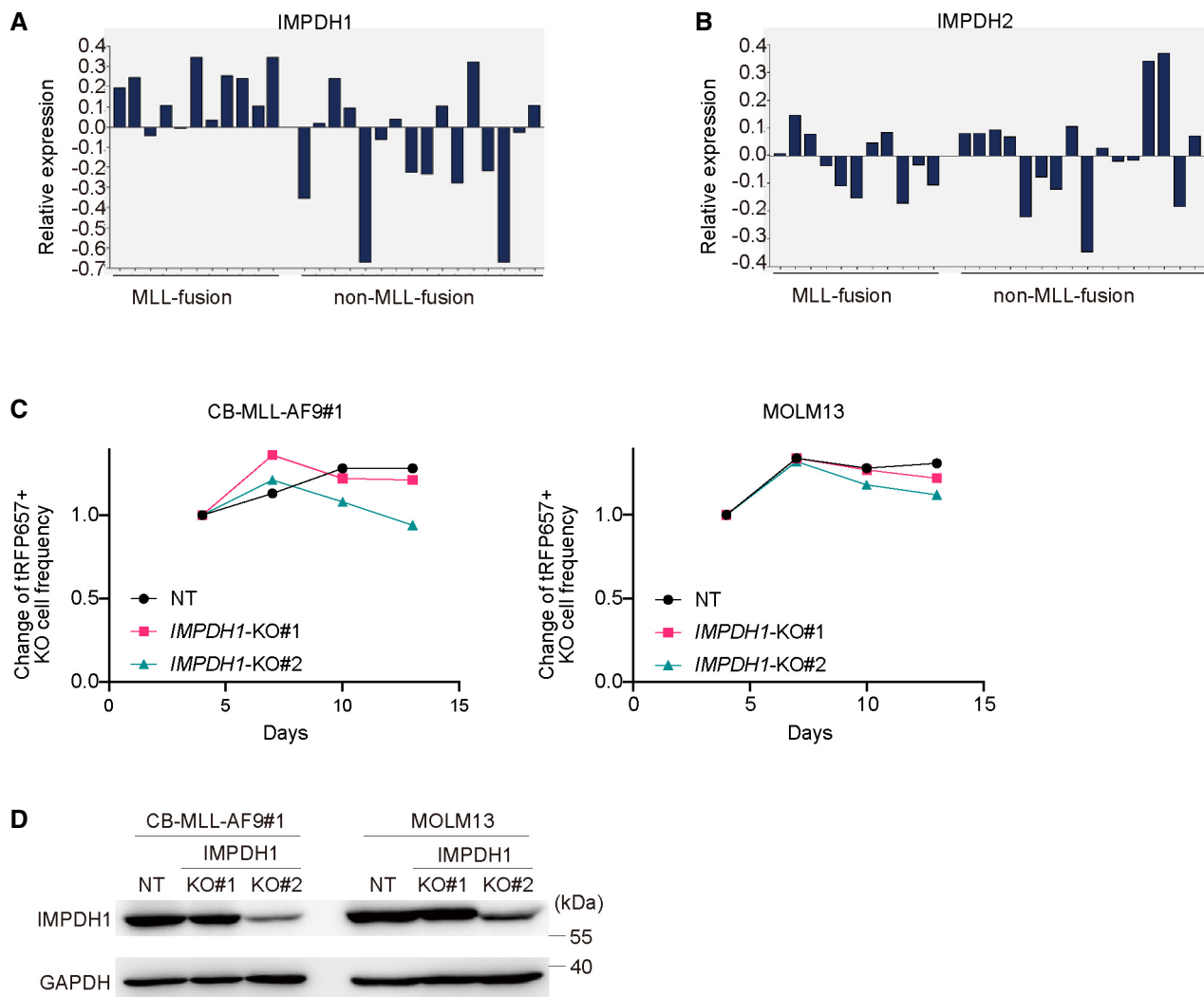


Figure EV2. Dependency of IMPDH1 and IMPDH2 in human AML cells.

A, B Relative mRNA expression of IMPDH1 (A) and IMPDH2 (B) in PDX cells derived from patients with MLL-fusion or non-MLL-fusion AMLs.

C MLL-AF9-expressing CB cells and MOLM13 cells were transduced with Cas9 together with non-targeting (NT) sgRNA or IMPDH1-targeting sgRNAs (IMPDH1-KO1 and KO2) co-expressing tRFP657. Changes in the frequency of tRFP657⁺ cells (sgRNA-transduced cells) in cell cultures are shown. Results are normalized to the frequency of tRFP657⁺ cells at day 4, set to 1.

D The tRFP657⁺ cells were sorted and subjected to western blotting.

Source data are available online for this figure.

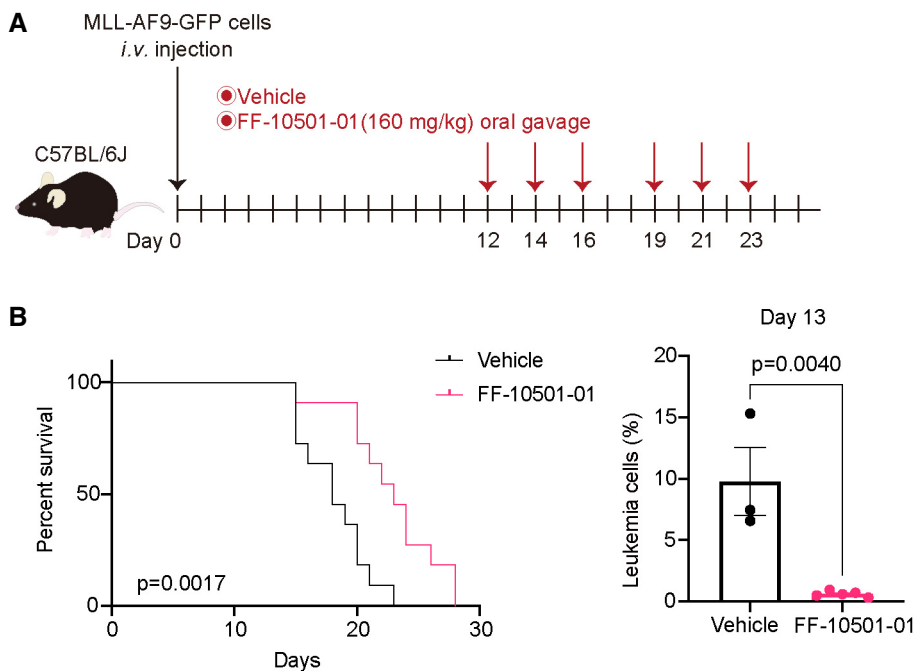


Figure EV3. Therapeutic effect of IMPDH inhibitor is significant on overt leukemia in mice.

A Experimental scheme used in (B). C57BL/6J mice were transplanted with mouse MLL-AF9-GFP cells and were treated with vehicle or FF-10501-01 from day 12 to 23, as indicated. GFP⁺ MLL-AF9 leukemia cells collected from vehicle- or FF-10501-01-treated mice were analyzed on day 13.
 B (left) Kaplan–Meier survival curves of MLL-AF9 leukemia mice treated with vehicle or MMF ($n = 11$ per group). Statistical significance was evaluated by the log-rank test. (right) Frequencies of GFP⁺ leukemic cells in peripheral blood at day 13 are also shown (vehicle: $n = 3$, FF-10501-01: $n = 5$). A two-tailed unpaired t-test was used for the comparison. Data are shown as mean \pm SEM.

Source data are available online for this figure.

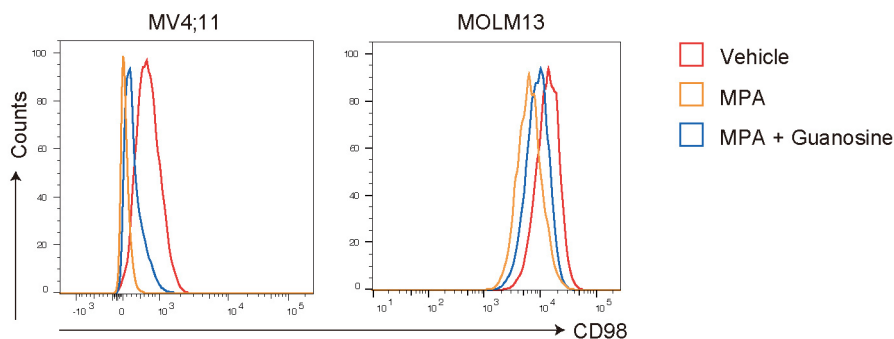


Figure EV4. IMPDH inhibition induces downregulation of CD98 in human AML cell lines *in vitro*.

FCM plots showing the CD98 expression in MV4;11 (left) and MOLM13 cells (right) after treated with/without 1 μ M MPA and 100 μ M Guanosine for 36 h. Source data are available online for this figure.