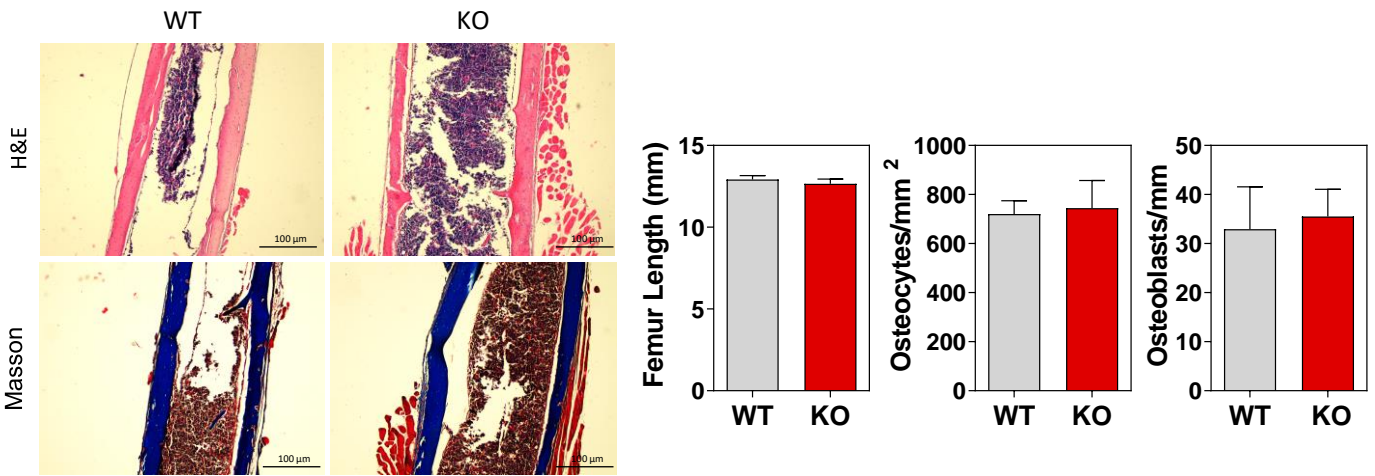
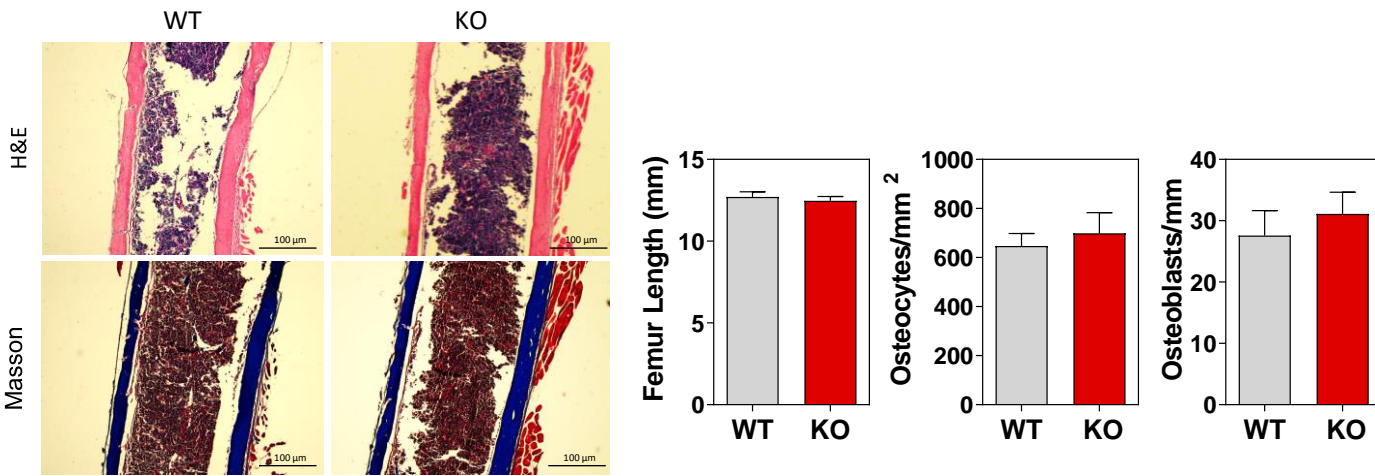


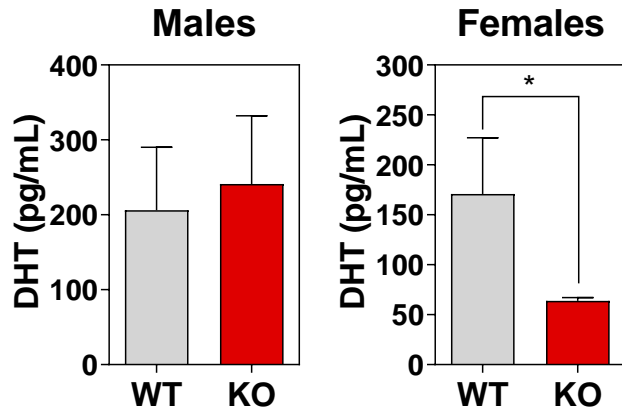
## A Males



## B Females



Femur sections from male **(A)** and female **(B)** 8 week-old mice stained with H&E or Masson Trichrome. In the right panels, femur length (n=5-8), osteocyte number per mm<sup>2</sup> of cortical bone (n=3-4) and osteoblast number per mm of trabeculae surface (n=4) of WT and KO mice, from both males **(A)** and females **(B)**.



Dihydrotestosterone (DHT) levels in the serum of male and female WT and KO 8 week-old mice. DHT was measured by ELISA (n=7-12). Data are expressed as mean  $\pm$  SEM. Significant differences are relative to WT. \* $p < 0.05$ .