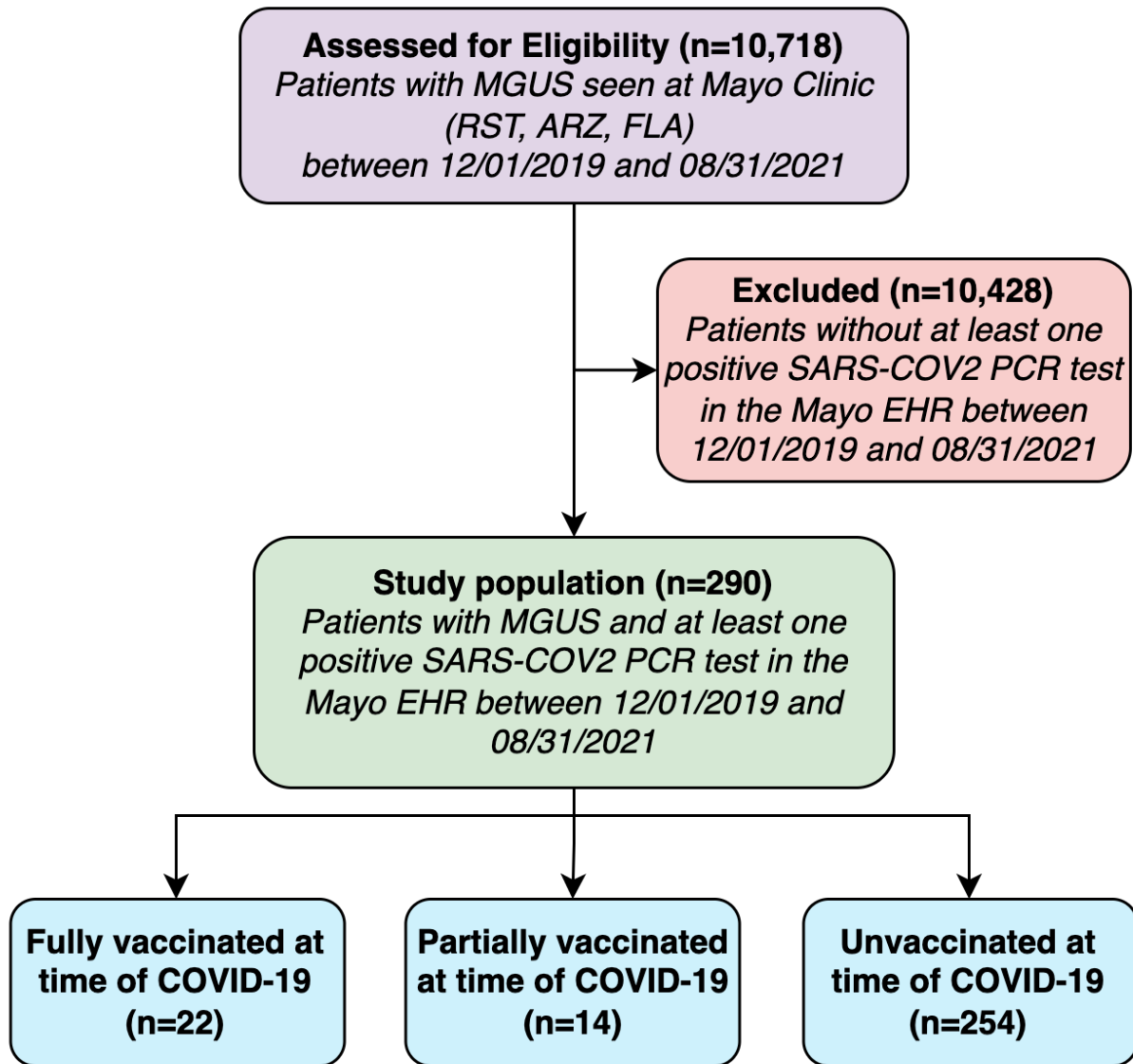


Supplementary Figure 1



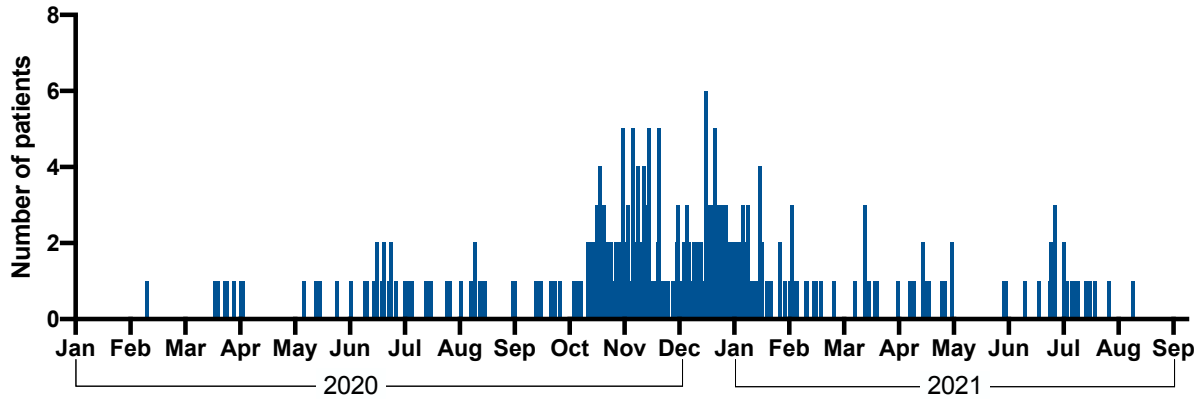
Supplementary Figure 1: Study design

The Mayo Clinic (Rochester, Arizona, and Florida) electronic health record was screened and 10,428 consecutive patients with monoclonal gammopathy of undetermined significance (MGUS) who were seen between 12/01/2019 and 08/31/2021 were identified. From this initial cohort, we identified 290 MGUS patients who also had at least one positive SARS-COV2 PCR test between 12/01/2019 and 08/31/2021 to be included in subsequent analyses.

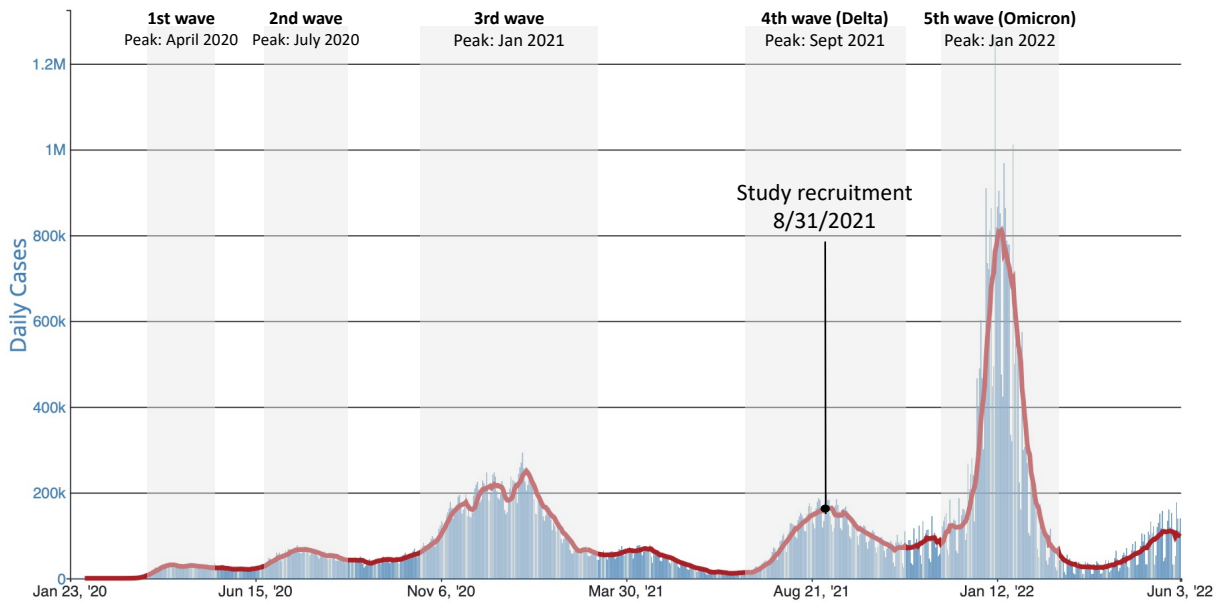
ARZ: Phoenix, Arizona; EHR: electronic health record; FLA: Jacksonville, Florida; MGUS: monoclonal gammopathy of undetermined significance; PCR: polymerase chain reaction; RST: Rochester, Minnesota; SARS-COV2: severe acute respiratory syndrome coronavirus 2

Supplementary Figure 2

(a) Number of COVID-19 infections per day



(b) Daily Trends in Number of COVID-19 Cases in the United States Reported to CDC



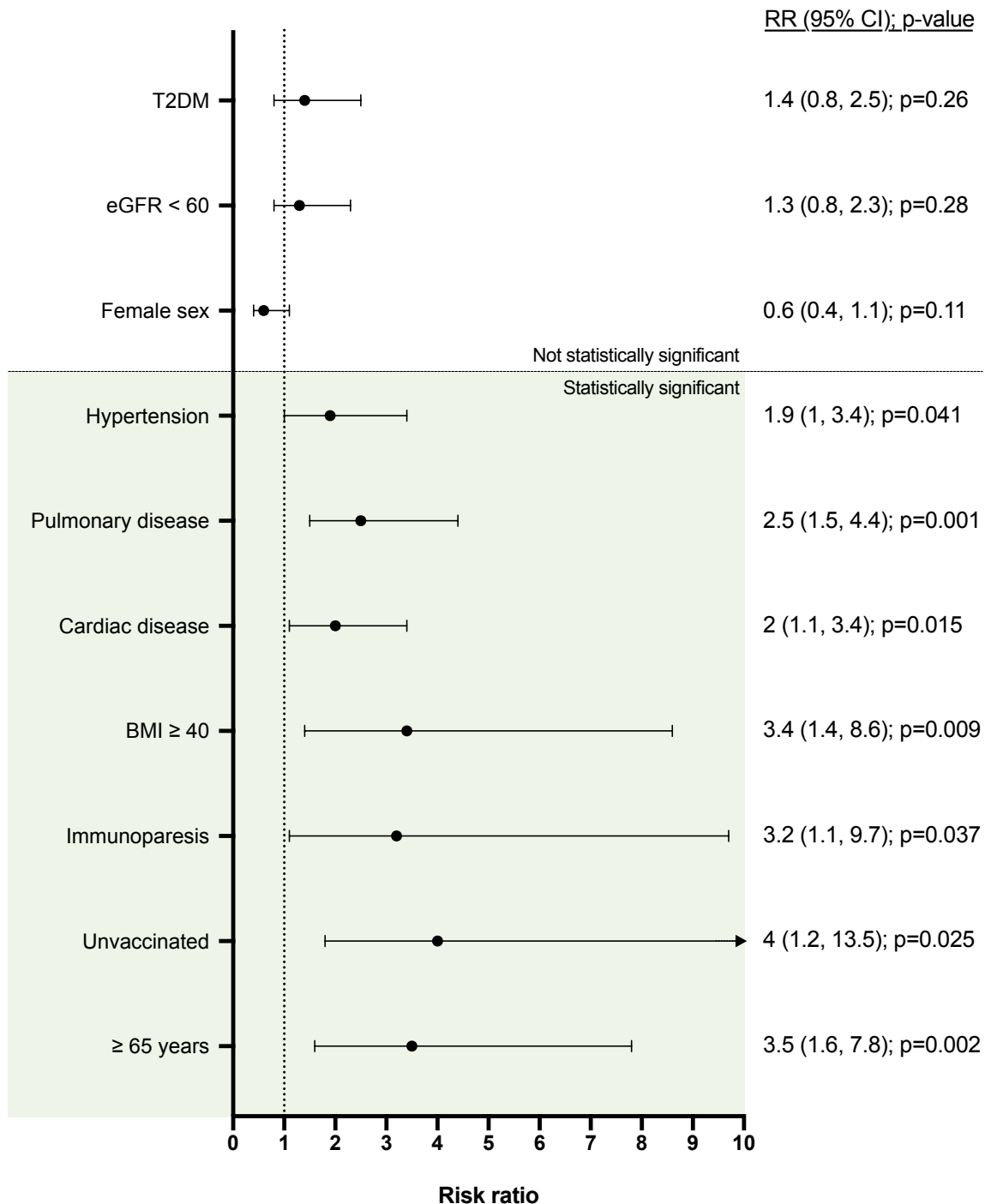
15
16
17
18
19
20
21
22
23
24

Supplementary Figure 2: Daily trends in number of COVID-19 cases

(a) Number of COVID-19 infections per day in patients with monoclonal gammopathy of undetermined significance in our study. One-hundred-ninety-seven (70%) of patients in our study developed COVID-19 between 10/1/2020 to 03/1/2021. (b) Daily trends in the number of COVID-19 cases in the United States (*Graph obtained from the CDC's COVID-19 data tracker website*).

Supplementary Figure 3

Univariable analysis of factors associated with severe COVID-19 infection



25
26
27
28
29
30

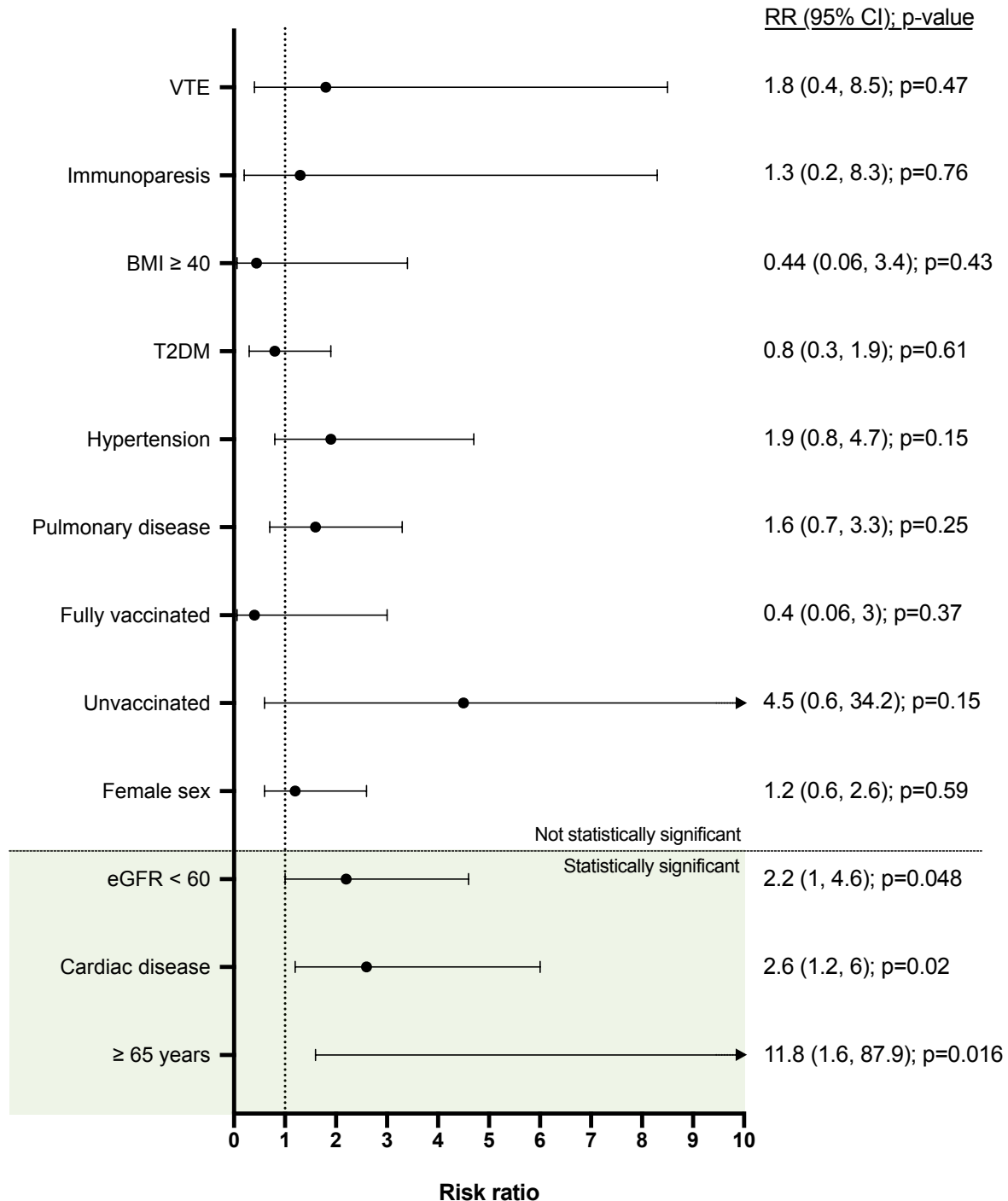
Supplementary Figure 3: Risk ratios (RR) for severe COVID-19 infection

Univariate logistic regression was used to estimate risk ratios with 95% confidence intervals (CI) for these risk factors associated with severe COVID-19 infection in patients with monoclonal gammopathy of undetermined significance.

BMI: body mass index; T2DM: type 2 diabetes mellitus

Supplementary Figure 4

Univariable analysis of factors associated with mortality after COVID-19



31 **Supplementary Figure 4: Risk ratios (RR) of mortality after COVID-19**
 32 Univariate logistic regression was used to estimate risk ratios with 95% confidence
 33 intervals (CI) for these risk factors associated with all-cause mortality following COVID-
 34 19 infection in patients with monoclonal gammopathy of undetermined significance.
 35 *BMI: body mass index; T2DM: type 2 diabetes mellitus*
 36

Supplementary Table 1: COVID-19 Vaccination Status

	N (%)
COVID vaccine status at time of COVID-19 infection	
Unvaccinated	254 (88%)
Partially vaccinated	14 (5%)
Pfizer (1 dose)	6 (2%)
Moderna (1 dose)	8 (3%)
Fully vaccinated	22 (8%)
Pfizer (at least 2 doses)	15 (5%)
Moderna (at least 2 doses)	5 (2%)
J&J (at least 1 dose)	1 (0.3%)
Pfizer, Moderna	1 (0.3%)
COVID-19 vaccine status at time of follow-up	
Unvaccinated	89 (31%)
1 dose of vaccine	23 (8%)
Pfizer	7 (2%)
Moderna	6 (2%)
J&J	10 (3%)
2 doses of vaccine	50 (17%)
Pfizer	25 (9%)
Moderna	21 (7%)
J&J	3 (1%)
J&J, Moderna	1 (0.3%)
3 doses of vaccine	113 (39%)
Pfizer	77 (27%)
Moderna	35 (12%)
Pfizer, Moderna	1 (0.3%)
4 doses of vaccine	15 (5%)
Pfizer	10 (3%)
Moderna	5 (2%)