

iScience, Volume 26

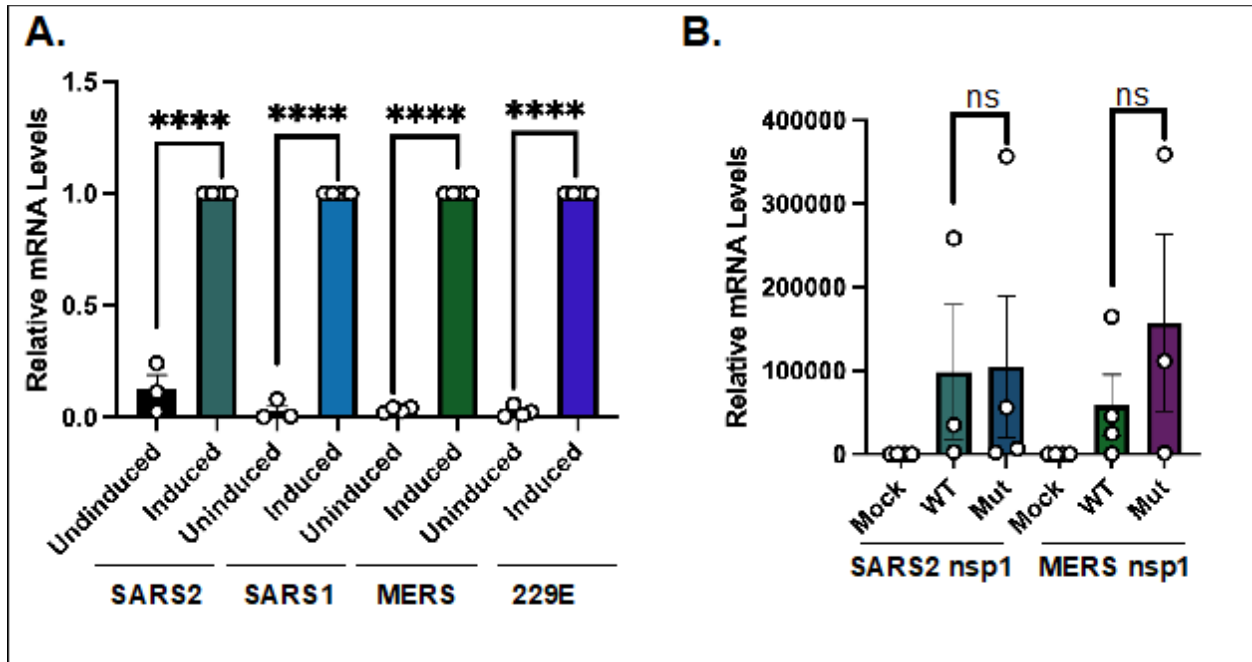
Supplemental information

Nonstructural protein 1 widespread

RNA decay phenotype varies among coronaviruses

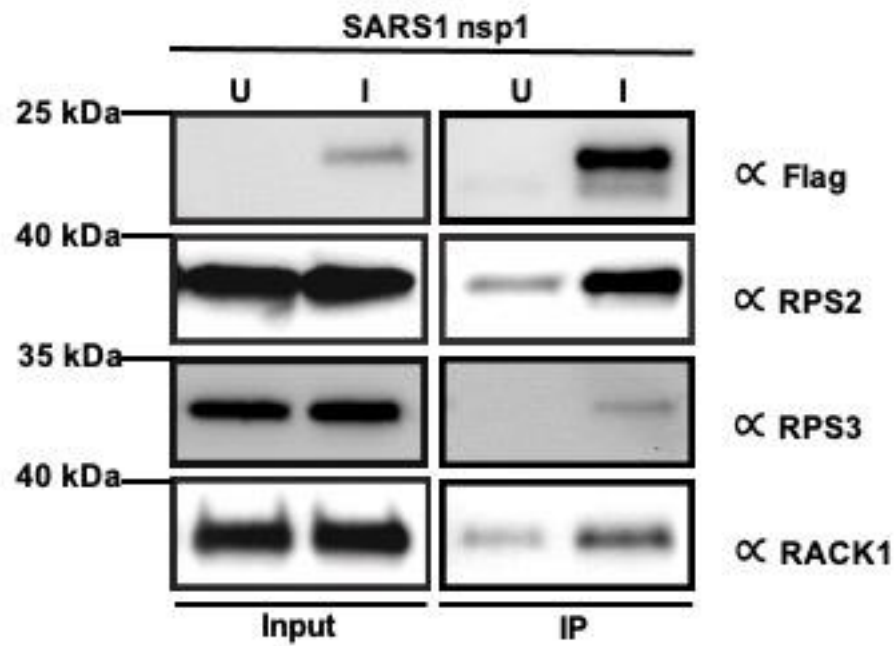
Yahaira Bermudez, Jacob Miles, and Mandy Muller

Figure S1.



Supplementary Figure 1. (A) Transduced cells were induced with doxycycline for 24h (or left uninduced) as described above, total RNA was harvested and underwent RT-qPCR to measure expression of nsp1 as indicated. **(B)** 293T cells were transfected with the indicated WT or mutant nsp1 (or mock transfected as a control). 24h later, total RNA was harvest underwent RT-qPCR to measure expression of nsp1. n.s., not significant; **, P < 0.01; ***, P < 0.001.

Figure S2.



Supplementary Figure 2. SARS1 nsp1 transduced cells were induced with doxycycline for 24h (or left uninduced). Cells were then harvested, lysed, and co-IP performed using FLAG-tag affinity beads to pull on the Flag-tagged nsp1 protein.