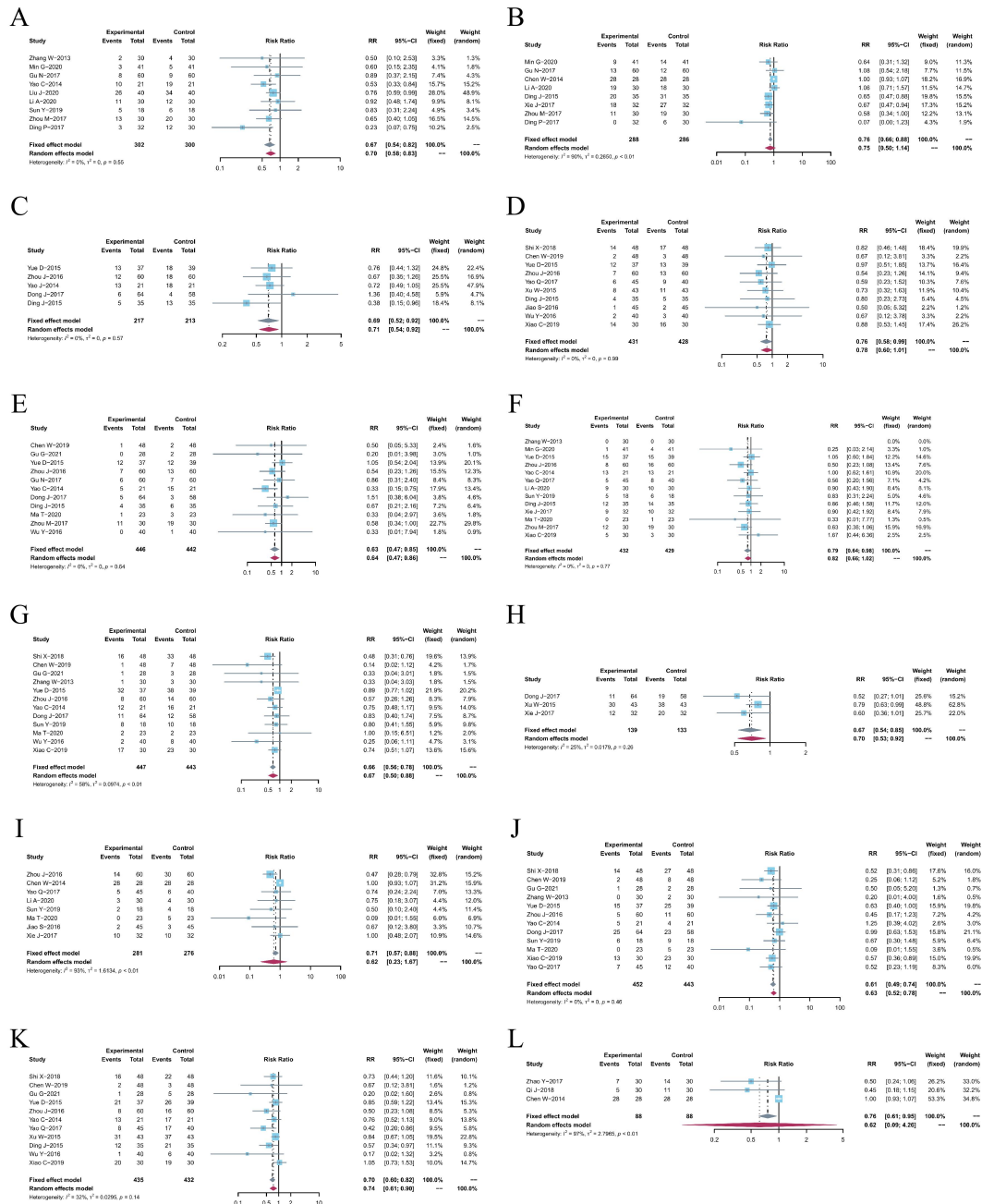
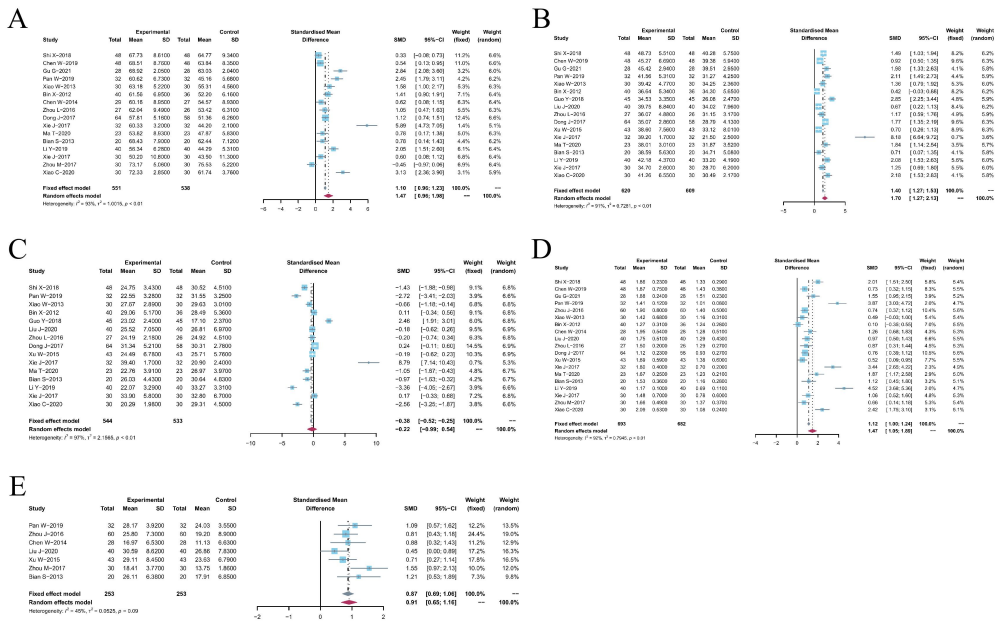


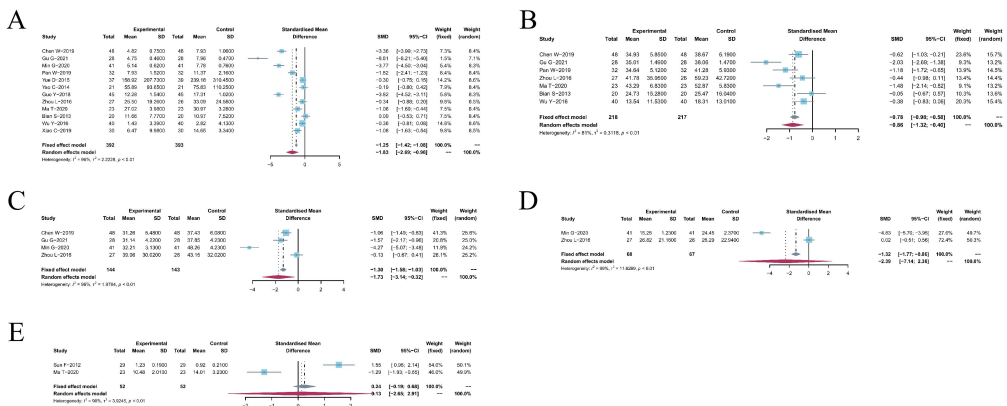
Supplementary Materials

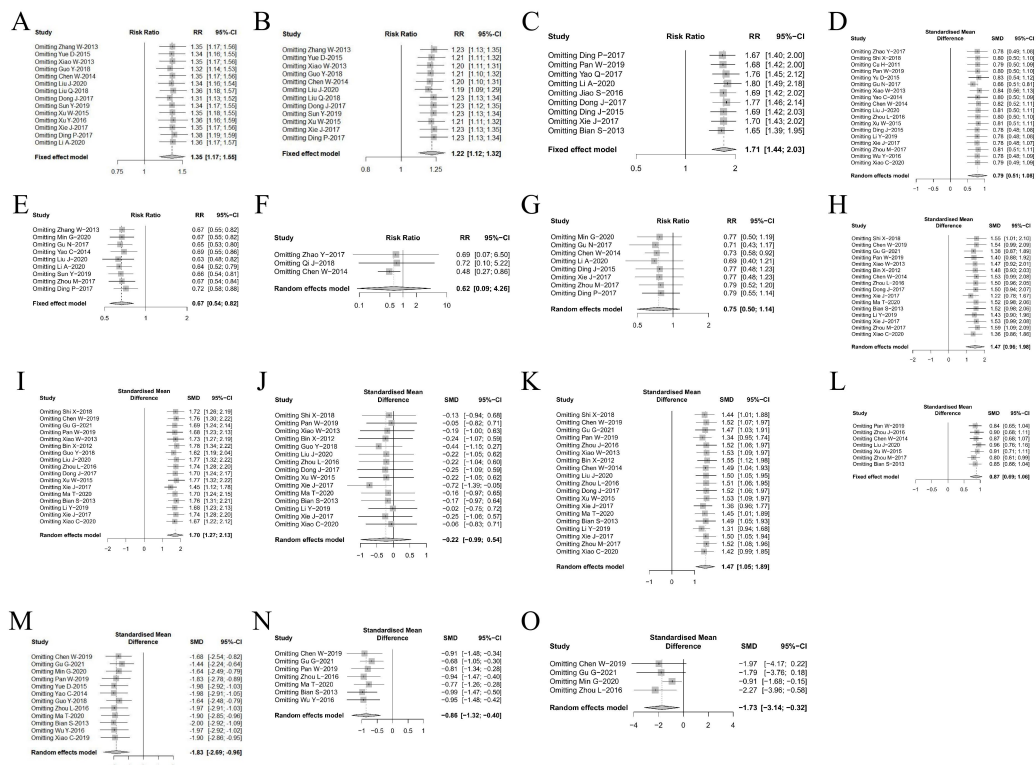
Traditional Chinese Medicines and Capecitabine-Based Chemotherapy for Colorectal Cancer Treatment: A Meta-Analysis



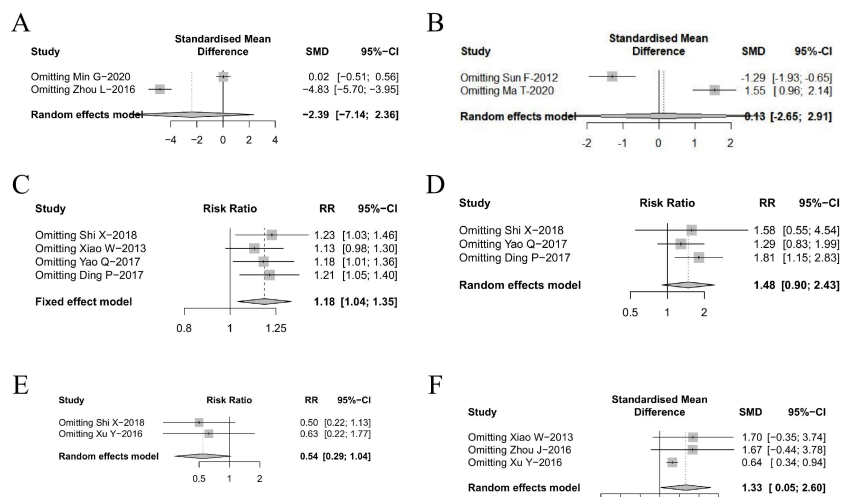


Supplementary Figure S2: Forest plots displaying the results of the meta-analysis for the levels of peripheral blood lymphocytes. (A) CD3⁺ T cells. (B) CD4⁺ T cells. (C) CD8⁺ T cells. (D) CD4⁺/CD8⁺ T Cells ratio. (E) NK cells.





Supplementary Figure S4: Meta-analysis results of Sensitivity analysis(1). (A) ORR. (B) DCR. (C) KPS (number). (D) KPS (mean±SD). (E) Myelosuppression. (F) Hematological toxicity. (G) Gastrointestinal reaction. (H) CD3⁺ T cells. (I) CD4⁺ T cells. (J) CD8⁺ T cells. (K) CD4⁺/CD8⁺ T Cells ratio. (L) NK cells. (M) CEA. (N) CA199. (O) CA125. (P) CA724. (Q) TNF- α . (R) 1-year Survival rate. (S) 2-year Survival rate. (T) transfer rate. (U) TTP.



Supplementary Figure S5: Meta-analysis results of Sensitivity analysis(2). (A) CA724. (B) TNF- α . (C) 1-year Survival rate. (D) 2-year Survival rate. (E) transfer rate. (F) TTP.

