

# Fig. S3.

*Annals of Botany*: Elliott TL, Zedek F, Barrett RL *et al.*

## Title: Chromosome size matters: genome evolution in the cyperid clade

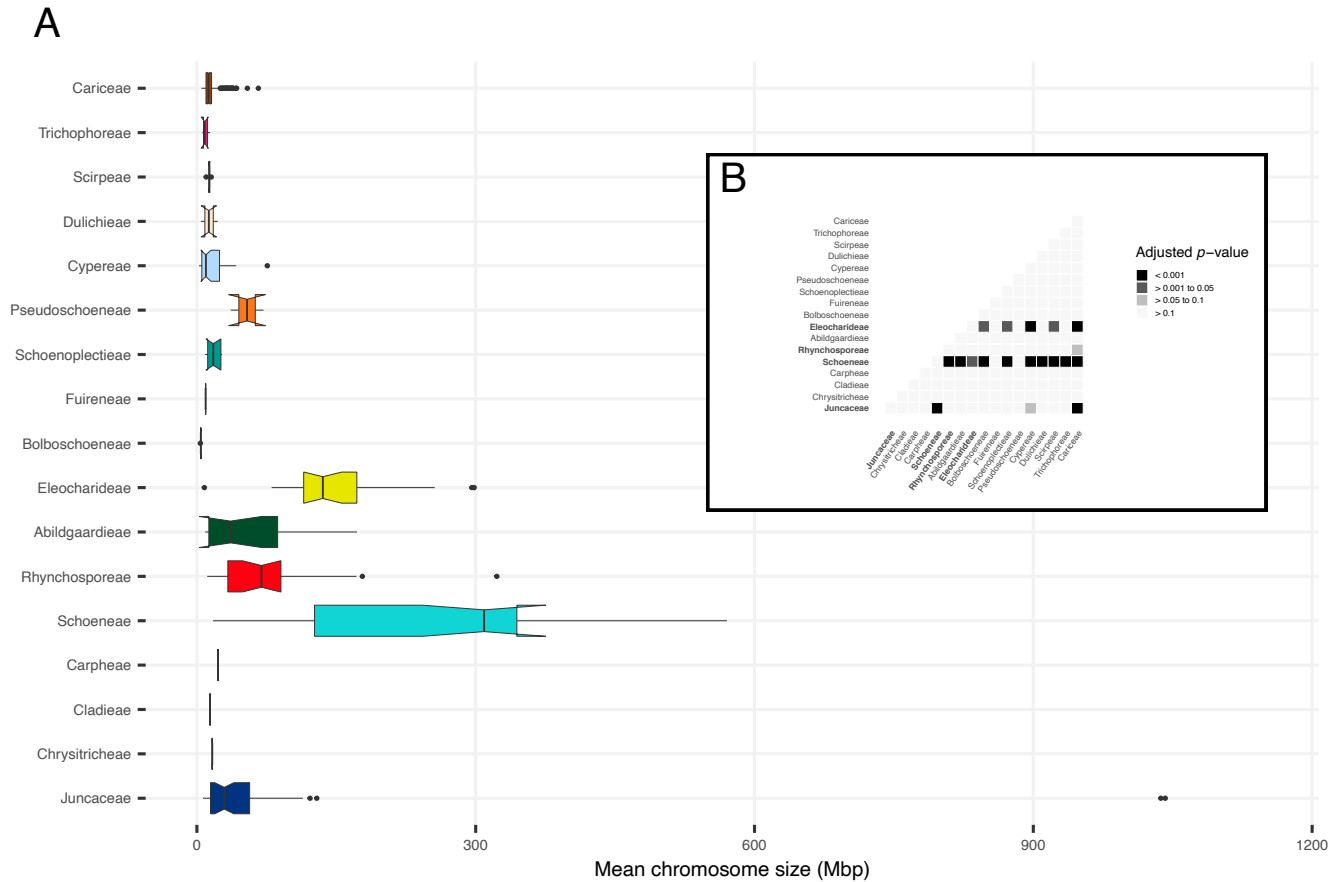


FIG. S3. Mean chromosome sizes ( $2C/2n$ ) across cyperids divided into 16 tribes of Cyperaceae, as well as the Juncaceae family (A). Major clades are represented by the same colours as in Fig. S1 and are presented in the same order as in the phylogeny shown in Fig. S2. Solid lines represent median values for the clades, outlying data are indicated by circles and lower and upper hinges correspond to the first and third quartiles, respectively.

Significant differences in mean chromosome sizes between clades as determined by the Tukey-Kramer Procedure are shown in (B). Black and dark gray squares indicate the clades whose mean chromosome sizes significantly differ, light grey shows clades whose values are marginally different and bold text highlights Juncaceae and the three tribes of Cyperaceae that differ from the other clades.