

Supplemental Online Content

Guédon AF, De Freminville J-B, Mirault T, et al. Association of lipoprotein(a) levels with incidence of major adverse limb events. *JAMA Netw Open*. 2022;5(12):e2245720. doi:10.1001/jamanetworkopen.2022.45720

eTable 1. Sensitivity Analyses With the Primary Outcome Models, Adding Hypolipemiant Drug Status on Patients With Available Data

eTable 2. Sensitivity Analyses With the Primary Outcome Models, Adding Time Effect Variable

eTable 3. Sensitivity Analyses With the Primary Outcome Models, Adding PAD, History of Ischaemic Heart Disease and History of Stroke

eTable 4. Baseline Characteristics According to Subgroups

eTable 5. Accelerated Failure Time (AFT) Models With MALE as the Outcome Variable

eTable 6. Accelerated Failure Time (AFT) Models With Major Amputation as the Outcome Variable

eTable 7. Accelerated Failure Time (AFT) Models With Peripheral Endovascular Revascularization as the Outcome Variable

eTable 8. Accelerated Failure Time (AFT) Models With Peripheral Surgical Revascularization as the Outcome Variable

eTable 9. *P*-values Included in the Benjamini-Hochberg False Discovery Rate Approach

eFigure 1. Frequency Distribution of Lipoprotein(a) [Lp(a)] in All Patients

eFigure 2. Kaplan-Meier Survival Curves of the Cumulative Incidence of Major Amputation by Lp(a) Levels

eFigure 3. Kaplan-Meier Survival Curves of the Cumulative Incidence of Peripheral Endovascular Revascularization by Lp(a) Levels

eFigure 4. Kaplan-Meier Survival Curves of the Cumulative Incidence of Peripheral Surgical Revascularization by Lp(a) Levels

eFigure 5. Distribution of Patients by Hospitalization Unit and Lp(a) Levels at Inclusion

eMethods 1. List of ICD-10 Used for Comorbidities Definitions

eMethods 2. List of CCAM (French Common Classification of Medical Procedures) Used for Outcomes Definitions

This supplemental material has been provided by the authors to give readers additional information about their work.

eTable 1. Sensitivity Analyses With the Primary Outcome Models, Adding Hypolipemiant Drug Status on Patients With Available Data

MALE outcome AFT models - log(Lp(a)) adjusted with hypolipemiant drugs				
Variable	Adjusted AFT Exponential Estimate	CI 95%	Uncorrected p-value	Benjamini - Hochberg corrected p-value
Log[Lp(a)]	0.69	[0.53 ; 0.89]	0.0043081	0,00710836
Age, y	0.94	[0.92 ; 0.96]	0.0000001	0,00000025
Male sex	0.42	[0.22 ; 0.83]	0.0117312	0,01738026
Log(Serum creatinine)	1.43	[0.81 ; 2.53]	0.2141561	0,23380689
History of smoking (former or current)	0.18	[0.10 ; 0.34]	0.0000002	0,00000050
Diabetes mellitus	0.10	[0.05 ; 0.19]	0.0000001	0,00000025
LDL cholesterol	2.34	[1.72 ; 3.19]	0.0000001	0,00000025
Arterial hypertension	1.05	[0.54 ; 2.01]	0.8900296	0,90838073
Dialysis	0.36	[0.01 ; 13.22]	0.5790493	0,60343032
Hypolipemiant drugs	0.05	[0.02 ; 0.10]	0.0000001	0,00000025
MALE outcome AFT models - Lp(a) threshold adjusted with hypolipemiant drugs				
Variable	Adjusted AFT Exponential Estimate	CI 95%	Uncorrected p-value	Benjamini - Hochberg corrected p-value
High Lp(a) ^a	0.81	[0.41 ; 1.59]	0.5394637	0,56815858
Very High Lp(a) ^a	0.33	[0.11 ; 0.94]	0.0389911	0,05216377
Age, y	0.94	[0.92 ; 0.96]	0.0000001	0,00000025
Male sex	0.43	[0.22 ; 0.84]	0.0138744	0,01970963
Log(Serum creatinine)	1.37	[0.78 ; 2.41]	0.2721395	0,29284577
History of smoking (former or current)	0.19	[0.10 ; 0.36]	0.0000003	0,00000072
Diabetes mellitus	0.09	[0.05 ; 0.19]	0.0000001	0,00000025
LDL cholesterol	2.29	[1.69 ; 3.12]	0.0000001	0,00000025
Arterial hypertension	1.02	[0.53 ; 1.97]	0.9465362	0,94653620
Dialysis	0.40	[0.01 ; 14.40]	0.6127007	0,63184760
Hypolipemiant drugs	0.05	[0.02 ; 0.10]	0.0000001	0,00000025

^aCompared with Normal Lp(a) as reference variable

AFT: Accelerated Failure Time ; CI: confidence interval LDL: low density lipoprotein ; Lp(a): Lipoprotein(a) ; MALE: Major Adverse Limb Events

eTable 2. Sensitivity Analyses With the Primary Outcome Models, Adding Time Effect Variable

MALE outcome AFT models - Log[Lp(a)] non adjusted with time effect			
Variable	Non adjusted AFT Exponential Estimate [CI95%]	Uncorrected p-value	Benjamini-Hochberg corrected p-value
Log[Lp(a)]	0.66 [0.53 ; 0.82]	0.0001385	0,00027423
Time effect	19.41 [11.48 ; 32.82]	0.0000001	0,00000025
MALE outcome AFT models - Lp(a) threshold non adjusted with time effect			
Variable	Non adjusted AFT Exponential Estimate [CI95%]	Uncorrected p-value	Benjamini-Hochberg corrected p-value
High Lp(a) ^a	0.55 [0.31 ; 0.99]	0.0459982	0,06071762
Very High Lp(a) ^a	0.28 [0.12 ; 0.66]	0.0038727	0,00661030
Time effect	19.30 [11.41 ; 32.67]	0.0000001	0,00000025
MALE outcome AFT models - Log[Lp(a)] adjusted with time effect			
Variable	Adjusted AFT Exponential Estimate [CI95%]	Uncorrected p-value	Benjamini -Hochberg corrected p-value
Log[Lp(a)]	0.60 [0.49 ; 0.74]	0.0000014	0,00000315
Age, y	0.91 [0.90 ; 0.93]	0.0000001	0,00000025
Male sex	0.44 [0.25 ; 0.76]	0.0030043	0,00521799
Log(Serum creatinine)	0.69 [0.40 ; 1.17]	0.1664505	0,18725681
History of smoking (former or current)	0.19 [0.12 ; 0.32]	0.0000001	0,00000025
Diabetes mellitus	0.07 [0.04 ; 0.12]	0.0000001	0,00000025
LDL cholesterol	4.90 [3.71 ; 6.47]	0.0000001	0,00000025
Arterial hypertension	1.90 [1.15 ; 3.14]	0.0117624	0,01738026
Dialysis	0.08 [0.01 ; 1.00]	0.0504431	0,06485541
Time effect	9.63 [5.89 ; 15.74]	0.0000001	0,00000025
MALE outcome AFT models - Lp(a) threshold adjusted with time effect			
Variable	Adjusted AFT Exponential Estimate [CI95%]	Uncorrected p-value	Benjamini -Hochberg corrected p-value
High Lp(a) ^a	0.46 [0.26 ; 0.80]	0.0063386	0,01012131
Very High Lp(a) ^a	0.23 [0.10 ; 0.54]	0.0005987	0,00113983
Age, y	0.91 [0.90 ; 0.93]	0.0000001	0,00000025
Male sex	0.45 [0.26 ; 0.78]	0.0041064	0,00689040
Log(Serum creatinine)	0.66 [0.39 ; 1.13]	0.1313049	0,15811600
History of smoking (former or current)	0.20 [0.12 ; 0.32]	0.0000001	0,00000025
Diabetes mellitus	0.06 [0.04 ; 0.12]	0.0000001	0,00000025
LDL cholesterol	4.81 [3.65 ; 6.35]	0.0000001	0,00000025
Arterial hypertension	1.88[1.14 ; 3.10]	0.0139361	0,01970963
Dialysis	0.08 [0.01 ; 0.98]	0.0480577	0,06260148
Time effect	9.56 [5.84 ; 15.65]	0.0000001	0,00000025

^aCompared with Normal Lp(a) as reference variable

AFT: Accelerated Failure Time ; CI: confidence interval LDL: low density lipoprotein ; Lp(a): Lipoprotein(a) ; MALE: Major Adverse Limb Events

Time effect is defined as the binary variable inclusion time before or after the median inclusion time of follow up cohort, set to September 29, 2011

eTable 3. Sensitivity Analyses With the Primary Outcome Models, Adding PAD, History of Ischaemic Heart Disease and History of Stroke

MALE outcome AFT models - Log[Lp(a)] adjusted with PAD				
Variable	Adjusted AFT Exponential Estimate	CI95%	Uncorrected p-value	Benjamini-Hochberg corrected p-value
Log[Lp(a)]	0.82	[0.69 ; 0.97]	0.0192676	0.02686609
Age, y	0.96	[0.95 ; 0.98]	0.0000044	0.00000947
Male sex	0.73	[0.47 ; 1.15]	0.1708286	0.19002282
Log(Serum creatinine)	0.76	[0.49 ; 1.17]	0.2149134	0.23380689
History of smoking (former or current)	0.59	[0.38 ; 0.89]	0.0126084	0.01835635
Diabetes mellitus	0.19	[0.12 ; 0.31]	0.0000001	0.00000025
LDL cholesterol	2.24	[1.81 ; 2.77]	0.0000001	0.00000025
Arterial hypertension	0.98	[0.64 ; 1.50]	0.9285879	0.93806329
Dialysis	0.17	[0.02 ; 1.17]	0.0721859	0.09162057
PAD	0.0003	[0.0002 ; 0.0007]	0.0000001	0.00000025
MALE outcome AFT models - Log[Lp(a)] adjusted with history of ischaemic heart disease				
Variable	Adjusted AFT Exponential Estimate	CI95%	Uncorrected p-value	Benjamini-Hochberg corrected p-value
Log[Lp(a)]	0.59	[0.47 ; 0.73]	0.0000018	0.00000396
Age, y	0.91	[0.89 ; 0.93]	0.0000001	0.00000025
Male sex	0.52	[0.29 ; 0.93]	0.0279242	0.03839578
Log(Serum creatinine)	0.66	[0.37 ; 1.16]	0.1500958	0.17481746
History of smoking (former or current)	0.19	[0.11 ; 0.33]	0.0000001	0.00000025
Diabetes mellitus	0.05	[0.03 ; 0.10]	0.0000001	0.00000025

LDL cholesterol	5.31	[3.95 ; 7.12]	0.0000001	0.0000002 5
Arterial hypertension	2.36	[1.39 ; 4.00]	0.0014438	0.0026969 1
Dialysis	0.13	[0.01 ; 1.85]	0.1325619	0.1581160 0
History of ischaemic heart disease	0.30	[0.17 ; 0.54]	0.0000740	0.0001495 1
MALE outcome AFT models - Log[Lp(a)] adjusted with history of stroke				
Variable	Adjusted AFT Exponential Estimate	CI95%	Uncorrected p-value	Benjamini-Hochberg corrected p-value
Log[Lp(a)]	0.57	[0.46 ; 0.71]	0.0000004	0.0000009 2
Age, y	0.90	[0.89 ; 0.92]	0.0000001	0.0000002 5
Male sex	0.46	[0.26 ; 0.81]	0.0071492	0.0110589 2
Log(Serum creatinine)	0.66	[0.37 ; 1.17]	0.1531036	0.1762471 7
History of smoking (former or current)	0.17	[0.01 ; 0.29]	0.0000001	0.0000002 5
Diabetes mellitus	0.05	[0.03 ; 0.09]	0.0000001	0.0000002 5
LDL cholesterol	5.69	[4.23 ; 7.63]	0.0000001	0.0000002 5
Arterial hypertension	2.32	[1.37 ; 3.93]	0.0017542	0.0031896 0
Dialysis	0.13	[0.01 ; 1.74]	0.1223558	0.1495459 8
History of stroke	0.40	[0.06 ; 2.59]	0.3368463	0.3585783 2

AFT: Accelerated Failure Time ; CI: confidence interval LDL: low density lipoprotein ; Lp(a): Lipoprotein(a) ; MALE: Major Adverse Limb Events; PAD : Peripheral Artery Disease

eTable 4. Baseline Characteristics According to Subgroups

	InDay hospitalization	Conventional hospitalization	Ischemic heart disease	PAD
number	13661	2852	2387	1139
Age, y	57.89 [49.29, 65.92]	60.17 [46.56, 71.96]	63.67 [56.36, 71.02]	65.07 [55.14, 74.87]
Male sex, n (%)	8042 (58.9)	1732 (60.7)	1842 (77.2)	799 (70.1)
Peripheral artery disease, n (%)	311 (2.3)	828 (29.0)	338 (14.2)	1139 (100.0)
Ischemic heart disease, n (%)	1753 (12.8)	634 (22.2)	2387 (100.0)	338 (29.7)
History of stroke, n (%)	58 (0.4)	146 (5.1)	57 (2.4)	33 (2.9)
Arterial hypertension, n (%)	7621 (55.8)	1441 (50.5)	1456 (61.0)	612 (53.7)
Cigarette use, n (%)				
<i>Never smoked</i>	9368 (68.6)	1981 (69.5)	1353 (56.7)	646 (56.7)
<i>Former smoker</i>	2589 (19.0)	181 (6.3)	576 (24.1)	146 (12.8)
<i>Current smoker</i>	1704 (12.5)	690 (24.2)	458 (19.2)	347 (30.5)
Dyslipidemia, n (%)	8743 (64.0)	1759 (61.7)	1960 (82.1)	835 (73.3)
Diabetes mellitus, n (%)	1553 (11.4)	593 (20.8)	544 (22.8)	320 (28.1)
Dialysis, n (%)	51 (0.4)	24 (0.8)	10 (0.4)	7 (0.6)
Lp(a), mg/dL	24.00 [10.00, 58.00]	29.00 [11.00, 65.00]	28.00 [11.00, 69.00]	30.00 [12.00, 70.50]
Lp(a) threshold, n (%)				
<i>Normal</i>	9720 (71.2)	1901 (66.7)	1548 (64.9)	726 (63.7)
<i>High</i>	3322 (24.3)	749 (26.3)	681 (28.5)	313 (27.5)
<i>Very high</i>	619 (4.5)	202 (7.1)	158 (6.6)	100 (8.8)
LDL cholesterol, mmol/L	3.14 [2.48, 3.85]	2.64 [1.99, 3.37]	2.56 [1.94, 3.37]	2.42 [1.76, 3.16]
HDL cholesterol, mmol/L	1.29 [1.06, 1.57]	1.14 [0.92, 1.41]	1.16 [0.95, 1.42]	1.13 [0.91, 1.38]
Total cholesterol, mmol/L	5.12 [4.37, 5.94]	4.55 [3.74, 5.43]	4.49 [3.74, 5.42]	4.32 [3.53, 5.21]
Triglycerides, mmol/L	1.17 [0.84, 1.70]	1.35 [0.98, 1.90]	1.32 [0.95, 1.84]	1.37 [1.03, 1.89]
Serum creatinine, μ mol/L	80.00 [68.00, 95.00]	83.00 [65.25, 115.00]	84.00 [72.00, 101.00]	83.00 [66.00, 110.00]
Measured GFR, mL/min/1.73 m ²	80.00 [67.00, 92.00]	76.00 [52.00, 98.00]	77.00 [63.00, 90.00]	75.00 [53.00, 97.00]
Proteinuria Ur, g/L	0.12 [0.08, 0.18]	0.12 [0.06, 0.33]	0.12 [0.08, 0.19]	0.12 [0.06, 0.26]
Conjugated bilirubin, μ mol/L	3.00 [2.00, 4.00]	5.00 [4.00, 8.00]	4.00 [3.00, 5.00]	5.00 [4.00, 9.00]
Total bilirubin, μ mol/L	12.00 [9.00, 16.00]	10.00 [8.00, 14.00]	12.00 [9.00, 16.00]	10.00 [7.00, 14.00]
Gamma-glutamyltransferase, U/L	21.00 [13.00, 35.00]	28.00 [16.00, 57.00]	25.00 [15.00, 43.00]	30.00 [18.00, 57.00]
Alkaline phosphatase, (median [IQR])	59.00 [49.00, 72.00]	70.00 [56.00, 90.00]	61.00 [51.00, 75.00]	70.00 [57.00, 90.00]
Alanine aminotransferase, U/L	21.00 [15.00, 30.00]	19.00 [13.00, 30.00]	22.00 [15.00, 33.00]	18.00 [13.00, 28.00]
Aspartate aminotransferase, U/L	21.00 [17.00, 26.00]	22.00 [17.00, 29.00]	22.00 [18.00, 28.00]	21.00 [17.00, 28.00]
Serum albumin, g/L	39.00 [36.90, 41.27]	34.00 [28.00, 38.50]	34.95 [29.00, 38.00]	34.50 [29.00, 38.00]
Hypolipemiant drugs, n/total n (%)		1520 (53.3)	471 (74.3)	628 (75.8)

HDL : high density lipoprotein ; LDL: low density lipoprotein ; Lp(a): Lipoprotein(a) ; PAD : Peripheral Artery Disease

Data regarding hypolipemiant drugs were not available for InDay hospitalization patients.

eTable 5. Accelerated Failure Time (AFT) Models With MALE as the Outcome Variable

MALE outcome AFT models - Log[Lp(a)] non adjusted			
Variable	Non adjusted AFT Exponential Estimate [CI95%]	Uncorrected p-value	Benjamini-Hochberg corrected p-value
Log[Lp(a)]	0.61 [0.48 ; 0.76]	0.000018	0,00003791
MALE outcome AFT models - Lp(a) threshold non adjusted			
Variable	Non adjusted AFT Exponential Estimate [CI95%]	Uncorrected p-value	Benjamini - Hochberg corrected p-value
High Lp(a) ^a	0.50 [0.27 ; 0.93]	0.029354	0,03980885
Very High Lp(a) ^a	0.18 [0.07 ; 0.44]	0.000229	0,00044453
MALE outcome AFT models - Log[Lp(a)] adjusted			
Variable	Adjusted AFT Exponential Estimate [CI95%]	Uncorrected p-value	Benjamini - Hochberg corrected p-value
Log[Lp(a)]	0.57 [0.46 ; 0.71]	0.0000004	0,00000092
Age, y	0.90 [0.88 ; 0.92]	0.0000001	0,00000025
Male sex	0.46 [0.26 ; 0.81]	0.0071317	0,01105892
Log(Serum creatinine)	0.67 [0.38 ; 1.18]	0.1640512	0,18667895
History of smoking (former or current)	0.17 [0.10 ; 0.29]	0.0000001	0,00000025
Diabetes mellitus	0.05 [0.03 ; 0.09]	0.0000001	0,00000025
LDL cholesterol	5.71 [4.25 ; 7.68]	0.0000001	0,00000025
Arterial hypertension	2.32 [1.37 ; 3.93]	0.0017720	0,00318960
Dialysis	0.12 [0.01 ; 1.72]	0.1200630	0,14857796
MALE outcome AFT models - Lp(a) threshold adjusted			
Variable	Adjusted AFT Exponential Estimate [CI95%]	Uncorrected p-value	Benjamini - Hochberg corrected p-value
High Lp(a) ^a	0.43 [0.24 ; 0.78]	0.0051709	0,00839212
Very High Lp(a) ^a	0.17 [0.07 ; 0.40]	0.0000664	0,00013695
Age, y	0.90 [0.89 ; 0.92]	0.0000001	0,00000025
Male sex	0.47 [0.26 ; 0.83]	0.0089485	0,01362925
Log(Serum creatinine)	0.65 [0.37 ; 1.14]	0.1345821	0,15861462
History of smoking (former or current)	0.17 [0.10 ; 0.29]	0.0000001	0,00000025
Diabetes mellitus	0.05 [0.03 ; 0.09]	0.0000001	0,00000025
LDL cholesterol	5.61 [4.18 ; 7.53]	0.0000001	0,00000025
Arterial hypertension	2.29 [1.35 ; 3.88]	0.0021335	0,00377172
Dialysis	0.12 [0.01 ; 1.69]	0.1164028	0,14587186

^aCompared with Normal Lp(a) as reference variable

AFT: Accelerated Failure Time; CI: confidence interval LDL: low density lipoprotein; Lp(a): Lipoprotein(a); MALE: Major Adverse Limb Events

eTable 6. Accelerated Failure Time (AFT) Models With Major Amputation as the Outcome Variable

Major amputation outcome AFT models - Log[Lp(a)] non adjusted			
Variable	Non adjusted AFT Exponential Estimate	CI95%	Uncorrected p-value
Log[Lp(a)]	0.56	[0.35 ; 0.91]	0.0184829
Major amputation outcome AFT models - Lp(a) threshold non adjusted			
Variable	Non adjusted AFT Exponential Estimate	CI95%	Uncorrected p-value
High Lp(a) ^a	0.42	[0.12 ; 1.41]	0.1601924
Very High Lp(a) ^a	0.22	[0.03 ; 1.96]	0.1755513
Major amputation outcome AFT models - Log[Lp(a)] adjusted			
Variable	Adjusted AFT Exponential Estimate	CI95%	Uncorrected p-value
Log[Lp(a)]	0.62	[0.40 ; 0.98]	0.0406164
Age, y	0.95	[0.91 ; 0.99]	0.0101601
Male sex	0.30	[0.08 ; 1.09]	0.0673985
Log(Serum creatinine)	0.19	[0.07 ; 0.48]	0.0005706
History of smoking (former or current)	0.88	[0.27 ; 2.81]	0.8279230
Diabetes mellitus	0.02	[0.00 ; 0.06]	0.0000000
LDL cholesterol	5.98	[3.04 ; 11.77]	0.0000002
Arterial hypertension	4.56	[1.47 ; 14.15]	0.0085716
Dialysis	0.11	[0.00 ; 4.28]	0.2380730
Major amputation outcome AFT models - Lp(a) threshold adjusted			
Variable	Adjusted AFT Exponential Estimate	CI95%	Uncorrected p-value
High Lp(a) ^a	0.41	[0.13 ; 1.32]	0.1348754
Very High Lp(a) ^a	0.41	[0.05 ; 3.40]	0.4078284
Age, y	0.95	[0.91 ; 0.99]	0.0094476
Male sex	0.31	[0.09 ; 1.13]	0.0770335
Log(Serum creatinine)	0.18	[0.07 ; 0.46]	0.0004038
History of smoking (former or current)	0.88	[0.28 ; 2.84]	0.8372066
Diabetes mellitus	0.01	[0.00 ; 0.05]	0.0000000
LDL cholesterol	5.94	[3.02 ; 11.69]	0.0000002
Arterial hypertension	4.47	[1.44 ; 13.88]	0.0096805
Dialysis	0.11	[0.00 ; 4.10]	0.2282675

^aCompared with Normal Lp(a) as reference variable

AFT: Accelerated Failure Time; CI: confidence interval LDL: low density lipoprotein; Lp(a): Lipoprotein(a); MALE: Major Adverse Limb Events

eTable 7. Accelerated Failure Time (AFT) Models With Peripheral Endovascular Revascularization as the Outcome Variable

Endovascular revascularization outcome AFT models - Log[Lp(a)] non adjusted			
Variable	Non adjusted AFT Exponential Estimate	CI95%	Uncorrected p-value
Log[Lp(a)]	0.49	[0.37 ; 0.65]	0.0000007
Endovascular revascularization outcome AFT models - Lp(a) threshold non adjusted			
Variable	Non adjusted AFT Exponential Estimate	CI95%	Uncorrected p-value
High Lp(a) ^a	0.41	[0.20 ; 0.84]	0.0153689
Very High Lp(a) ^a	0.07	[0.02 ; 0.24]	0.0000191
Endovascular revascularization outcome AFT models - log(Lp(a)) adjusted			
Variable	Adjusted AFT Exponential Estimate	CI95%	Uncorrected p-value
Log[Lp(a)]	0.49	[0.37 ; 0.63]	0.0000001
Age, y	0.89	[0.87 ; 0.91]	0.0000001
Male sex	0.63	[0.32 ; 1.23]	0.1765692
Log(Serum creatinine)	0.39	[0.20 ; 0.74]	0.0041594
History of smoking (former or current)	0.17	[0.09 ; 0.33]	0.0000001
Diabetes mellitus	0.03	[0.02 ; 0.07]	0.0000001
LDL cholesterol	6.00	[4.21 ; 8.56]	0.0000001
Arterial hypertension	2.03	[1.08 ; 3.81]	0.0278617
Dialysis	0.31	[0.01 ; 7.20]	0.4662040
Endovascular revascularization outcome AFT models - Lp(a) threshold adjusted			
Variable	Adjusted AFT Exponential Estimate	CI95%	Uncorrected p-value
High Lp(a) ^a	0.36	[0.18 ; 0.70]	0.0027467
Very High Lp(a) ^a	0.09	[0.03 ; 0.29]	0.0000513
Age, y	0.89	[0.87 ; 0.91]	0.0000000
Male sex	0.65	[0.33 ; 1.27]	0.2051801
Log(Serum creatinine)	0.37	[0.20 ; 0.72]	0.0029516
History of smoking (former or current)	0.18	[0.09 ; 0.34]	0.0000001
Diabetes mellitus	0.03	[0.02 ; 0.07]	0.0000001
LDL cholesterol	5.81	[4.08 ; 8.26]	0.0000001
Arterial hypertension	2.00	[1.06 ; 3.75]	0.0317191
Dialysis	0.30	[0.01 ; 6.86]	0.4481727

^aCompared with Normal Lp(a) as reference variable

AFT: Accelerated Failure Time; CI: confidence interval LDL: low density lipoprotein; Lp(a): Lipoprotein(a); MALE: Major Adverse Limb Events

eTable 8. Accelerated Failure Time (AFT) Models With Peripheral Surgical Revascularization as the Outcome Variable

Surgical revascularization outcome AFT models - Log[Lp(a)] non adjusted			
Variable	Non adjusted AFT Exponential Estimate	CI95%	Uncorrected p-value
Log[Lp(a)]	0.80	[0.60 ; 1.07]	0.1341378
Surgical revascularization outcome AFT models - Lp(a) threshold non adjusted			
Variable	Non adjusted AFT Exponential Estimate	CI95%	Uncorrected p-value
High Lp(a) ^a	0.74	[0.34 ; 1.61]	0.4446194
Very High Lp(a) ^a	0.45	[0.11 ; 1.89]	0.2747988
Surgical revascularization outcome AFT models - Log[Lp(a)] adjusted			
Variable	Adjusted AFT Exponential Estimate	CI95%	Uncorrected p-value
Log[Lp(a)]	0.72	[0.54 ; 0.95]	0.0222878
Age, y	0.93	[0.91 ; 0.96]	0.0000011
Male sex	0.30	[0.13 ; 0.67]	0.0034721
Log(Serum creatinine)	1.70	[0.72 ; 4.01]	0.2254132
History of smoking (former or current)	0.15	[0.07 ; 0.30]	0.0000002
Diabetes mellitus	0.24	[0.11 ; 0.55]	0.0007395
LDL cholesterol	4.24	[2.85 ; 6.32]	0.0000000
Arterial hypertension	1.68	[0.84 ; 3.37]	0.1447163
Dialysis	0.14	[0.00 ; 5.72]	0.2998081
Surgical revascularization outcome AFT models - Lp(a) threshold adjusted			
Variable	Adjusted AFT Exponential Estimate	CI95%	Uncorrected p-value
High Lp(a) ^a	0.61	[0.28 ; 1.29]	0.1951324
Very High Lp(a) ^a	0.35	[0.09 ; 1.45]	0.1481035
Age, y	0.93	[0.91 ; 0.96]	0.0000011
Male sex	0.31	[0.14 ; 0.69]	0.0040603
Log(Serum creatinine)	1.66	[0.70 ; 3.92]	0.2456297
History of smoking (former or current)	0.15	[0.07 ; 0.31]	0.0000002
Diabetes mellitus	0.24	[0.11 ; 0.55]	0.0006552
LDL cholesterol	4.20	[2.83 ; 6.26]	0.0000000
Arterial hypertension	1.67	[0.83 ; 3.35]	0.1517667
Dialysis	0.13	[0.00 ; 5.44]	0.2879857

^aCompared with Normal Lp(a) as reference variable

AFT: Accelerated Failure Time; CI: confidence interval LDL: low density lipoprotein; Lp(a): Lipoprotein(a); MALE: Major Adverse Limb Events

eTable 9. P-values Included in the Benjamini-Hochberg False Discovery Rate Approach

AFT model	Variable	Uncorrected p-value	Benjamini-Hochberg corrected p-value
Unadjusted AFT model with Log[Lp(a)] (outcome MALE)	Log[Lp(a)]	0.000018	0,00003791
Unadjusted AFT model with Lp(a) threshold (outcome MALE)	High Lp(a) ^a	0.029354	0,03980885
	Very High Lp(a) ^a	0.000229	0,00044453
Adjusted AFT model with Log[Lp(a)] (outcome MALE)	Log[Lp(a)]	0.0000004	0,00000092
	Age, y	0.0000001	0,00000025
	Male sex	0.0071317	0,01105892
	Log(Serum creatinine)	0.1640512	0,18667895
	History of smoking (former or current)	0.0000001	0,00000025
	Diabetes mellitus	0.0000001	0,00000025
	LDL cholesterol	0.0000001	0,00000025
	Arterial hypertension	0.0017720	0,00318960
	Dialysis	0.1200630	0,14857796
Adjusted AFT model with Lp(a) threshold (outcome MALE)	High Lp(a) ^a	0.0051709	0,00839212
	Very High Lp(a) ^a	0.0000664	0,00013695
	Age, y	0.0000001	0,00000025
	Male sex	0.0089485	0,01362925
	Log(Serum creatinine)	0.1345821	0,15861462
	History of smoking (former or current)	0.0000001	0,00000025
	Diabetes mellitus	0.0000001	0,00000025
	LDL cholesterol	0.0000001	0,00000025
	Arterial hypertension	0.0021335	0,00377172
	Dialysis	0.1164028	0,14587186
Unadjusted AFT model with Log[Lp(a)] (outcome MALE) with time effect	Log[Lp(a)]	0.0001385	0,00027423
	Time effect	0.0000001	0,00000025
Unadjusted AFT model with Lp(a) threshold (outcome MALE) with time effect	High Lp(a) ^a	0.0459982	0,06071762
	Very High Lp(a) ^a	0.0038727	0,00661030
	Time effect	0.0000001	0,00000025
Adjusted AFT model with Log[Lp(a)] (outcome MALE) with time effect	Log[Lp(a)]	0.0000014	0,00000315
	Age, y	0.0000001	0,00000025
	Male sex	0.0030043	0,00521799
	Log(Serum creatinine)	0.1664505	0,18725681
	History of smoking (former or current)	0.0000001	0,00000025
	Diabetes mellitus	0.0000001	0,00000025
	LDL cholesterol	0.0000001	0,00000025

	Arterial hypertension	0.0117624	0,01738026
	Dialysis	0.0504431	0,06485541
	Time effect	0.0000001	0,00000025
Adjusted AFT model with Lp(a) threshold (outcome MALE) with time effect	High Lp(a) ^a	0.0063386	0,01012131
	Very High Lp(a) ^a	0.0005987	0,00113983
	Age, y	0.0000001	0,00000025
	Male sex	0.0041064	0,00689040
	Log(Serum creatinine)	0.1313049	0,15811600
	History of smoking (former or current)	0.0000001	0,00000025
	Diabetes mellitus	0.0000001	0,00000025
	LDL cholesterol	0.0000001	0,00000025
	Arterial hypertension	0.0139361	0,01970963
	Dialysis	0.0480577	0,06260148
	Time effect	0.0000001	0,00000025
	Adjusted AFT model with Log[Lp(a)] (outcome MALE) with hypolipemiant drug status	Log[Lp(a)]	0.0043081
Age, y		0.0000001	0,00000025
Male sex		0.0117312	0,01738026
Log(Serum creatinine)		0.2141561	0,23380689
History of smoking (former or current)		0.0000002	0,00000050
Diabetes mellitus		0.0000001	0,00000025
LDL cholesterol		0.0000001	0,00000025
Arterial hypertension		0.8900296	0,90838073
Dialysis		0.5790493	0,60343032
Hypolipemiant drugs		0.0000001	0,00000025
Adjusted AFT model with Lp(a) threshold (outcome MALE) with hypolipemiant drug status	High Lp(a) ^a	0.5394637	0,56815858
	Very High Lp(a) ^a	0.0389911	0,05216377
	Age, y	0.0000001	0,00000025
	Male sex	0.0138744	0,01970963
	Log(Serum creatinine)	0.2721395	0,29284577
	History of smoking (former or current)	0.0000003	0,00000072
	Diabetes mellitus	0.0000001	0,00000025
	LDL cholesterol	0.0000001	0,00000025
	Arterial hypertension	0.9465362	0,94653620
	Dialysis	0.6127007	0,63184760
	Hypolipemiant drugs	0.0000001	0,00000025
Adjusted AFT model with Log[Lp(a)] (outcome MALE) with PAD status	Log[Lp(a)]	0.0192676	0,02686609
	Age, y	0.0000044	0,00000947
	Male sex	0.1708286	0,19002282
	Log(Serum creatinine)	0.2149134	0,23380689

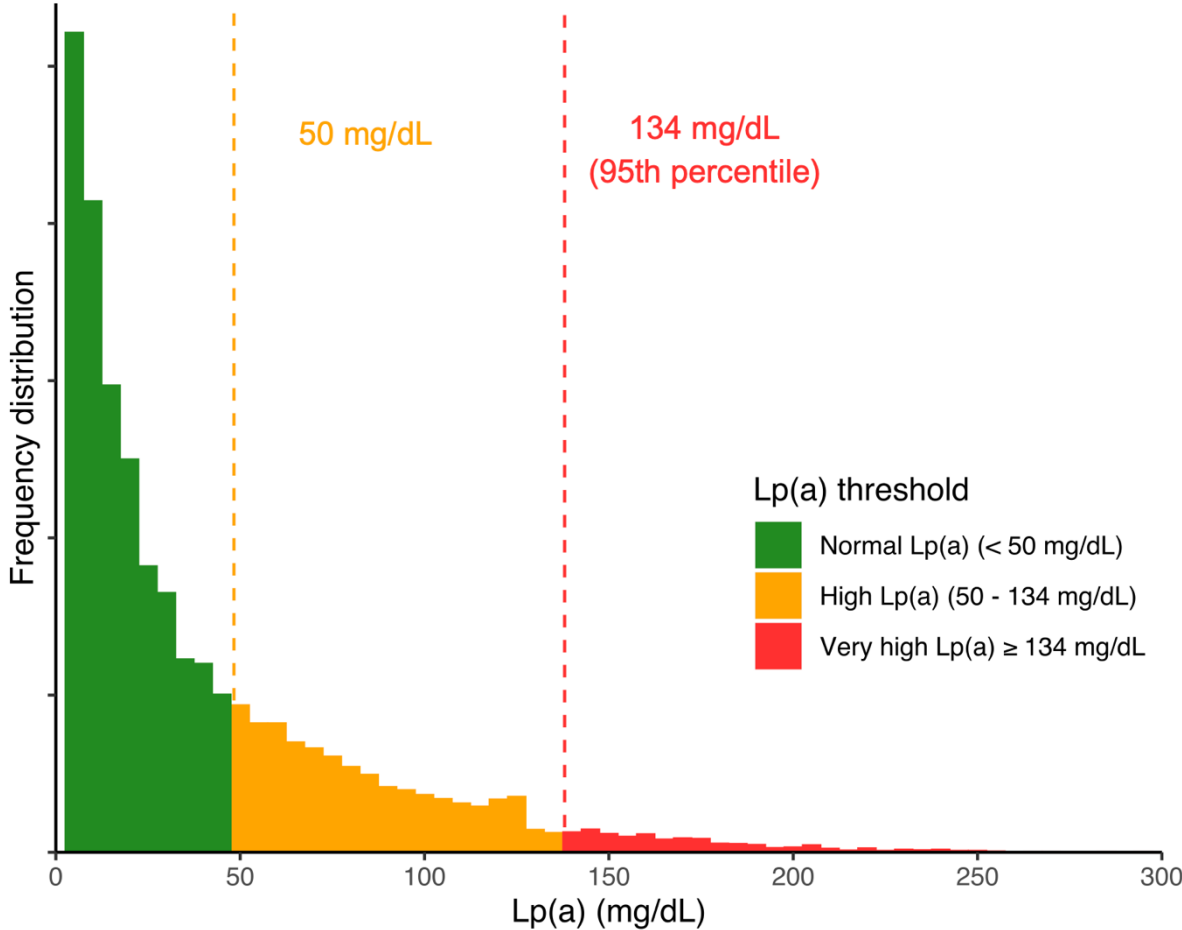
	History of smoking (former or current)	0.0126084	0,01835635	
	Diabetes mellitus	0.0000001	0,00000025	
	LDL cholesterol	0.0000001	0,00000025	
	Arterial hypertension	0.9285879	0,93806329	
	Dialysis	0.0721859	0,09162057	
	Peripheral arterial disease	0.0000001	0,00000025	
Adjusted AFT model with Log[Lp(a)] (outcome MALE) with history of ischaemic heart disease	Log[Lp(a)]	0.0000018	0,00000396	
	Age, y	0.0000001	0,00000025	
	Male sex	0.0279242	0,03839578	
	Log(Serum creatinine)	0.1500958	0,17481746	
	History of smoking (former or current)	0.0000001	0,00000025	
	Diabetes mellitus	0.0000001	0,00000025	
	LDL cholesterol	0.0000001	0,00000025	
	Arterial hypertension	0.0014438	0,00269691	
	Dialysis	0.1325619	0,15811600	
	History of ischaemic heart disease	0.0000740	0,00014951	
	Adjusted AFT model with Log[Lp(a)] (outcome MALE) with history of stroke	Log[Lp(a)]	0.0000004	0,00000092
		Age, y	0.0000001	0,00000025
Male sex		0.0071492	0,01105892	
Log(Serum creatinine)		0.1531036	0,17624717	
History of smoking (former or current)		0.0000001	0,00000025	
Diabetes mellitus		0.0000001	0,00000025	
LDL cholesterol		0.0000001	0,00000025	
Arterial hypertension		0.0017542	0,00318960	
Dialysis		0.1223558	0,14954598	
History of stroke		0.3368463	0,35857832	

*Compared with Normal Lp(a) as reference variable

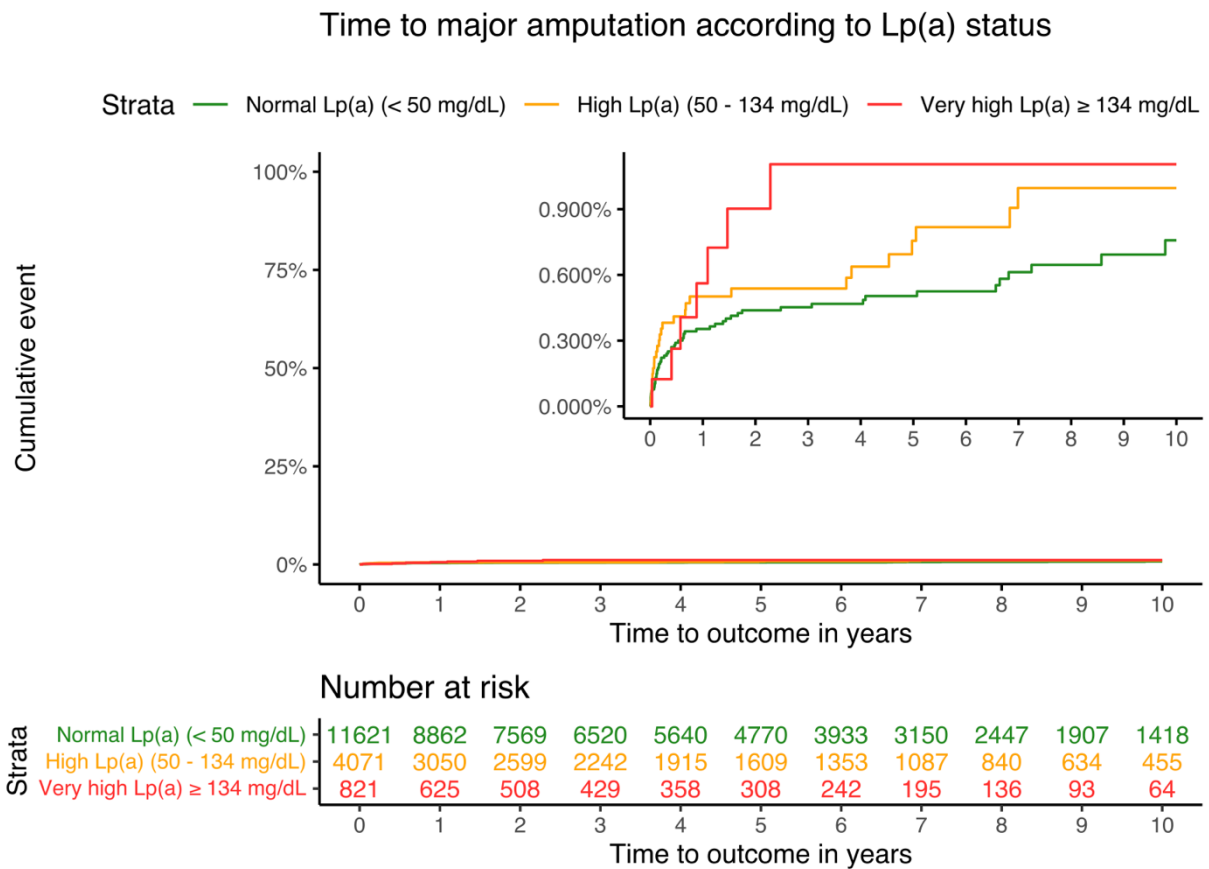
AFT: Accelerated Failure Time; CI: confidence interval LDL: low density lipoprotein; Lp(a): Lipoprotein(a); MALE: Major Adverse Limb Events; PAD : Peripheral Artery Disease

Time effect is defined as the binary variable inclusion time before or after the median inclusion time of follow up cohort, set to September 29, 2011

eFigure 1. Frequency Distribution of Lipoprotein(a) [Lp(a)] in All Patients

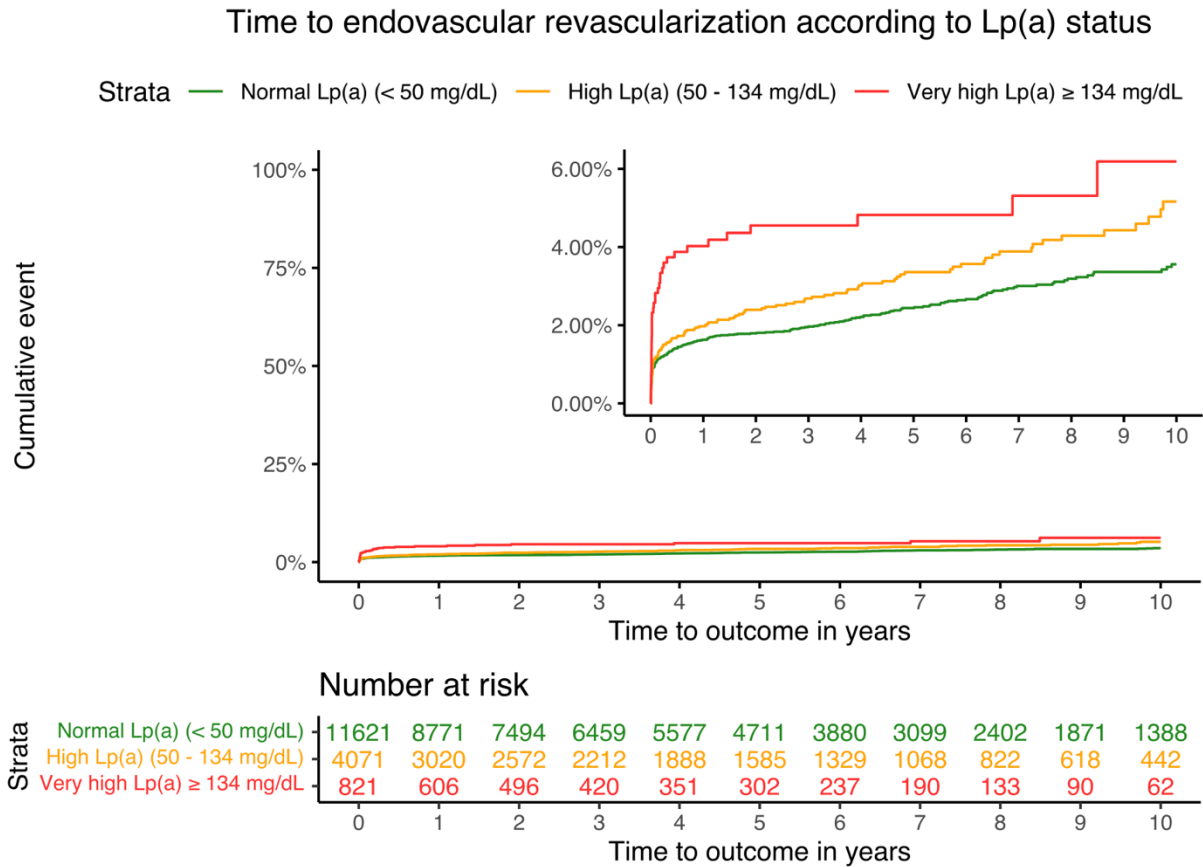


eFigure 2. Kaplan-Meier Survival Curves of the Cumulative Incidence of Major Amputation by Lp(a) Levels



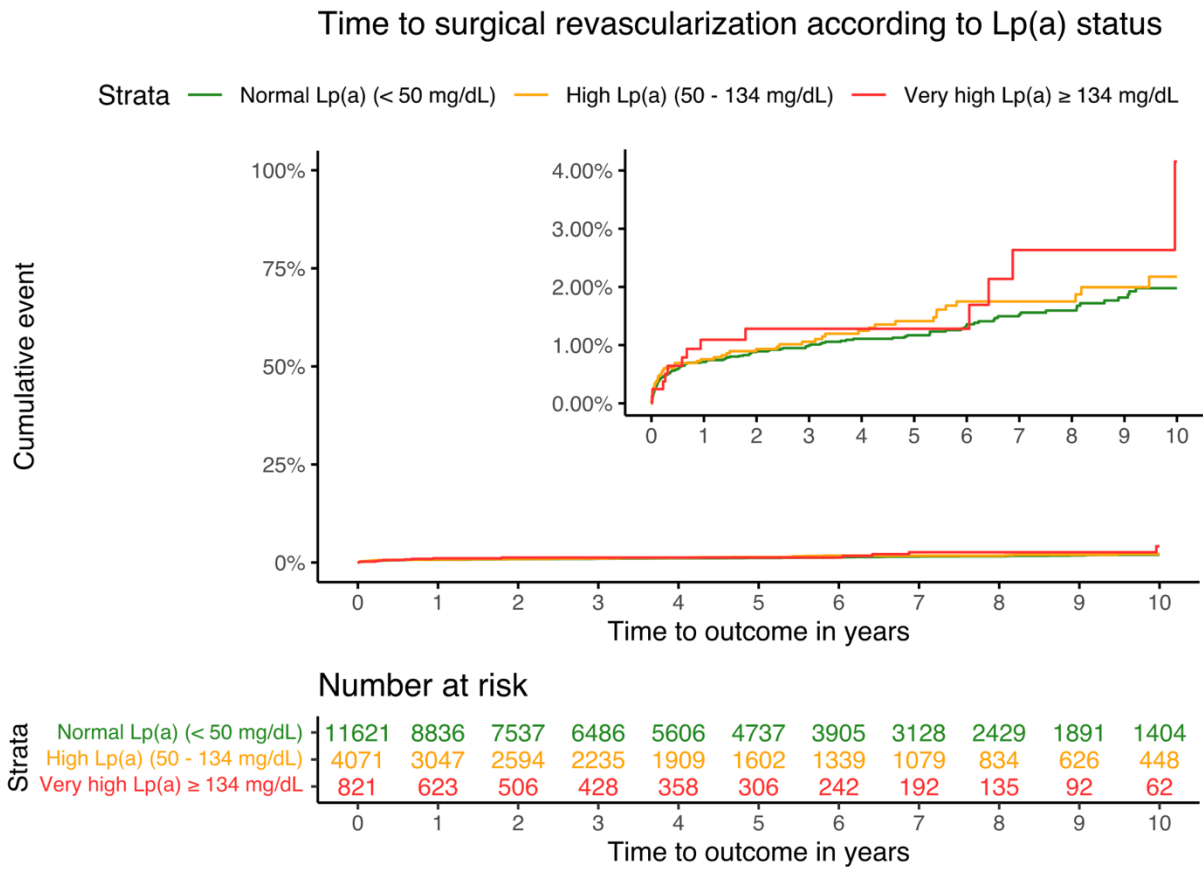
The inset shows the same data on an enlarged y axis.

eFigure 3. Kaplan-Meier Survival Curves of the Cumulative Incidence of Peripheral Endovascular Revascularization by Lp(a) Levels



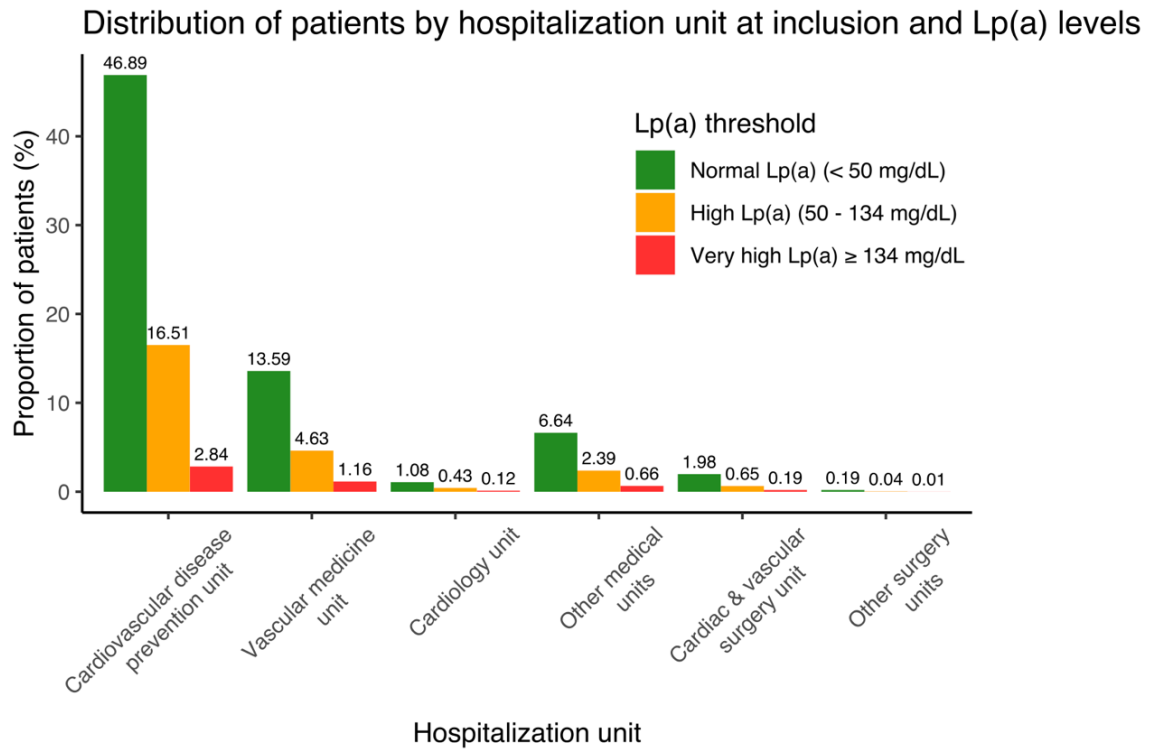
The inset shows the same data on an enlarged y axis.

eFigure 4. Kaplan-Meier Survival Curves of the Cumulative Incidence of Peripheral Surgical Revascularization by Lp(a) Levels



The inset shows the same data on an enlarged y axis.

eFigure 5. Distribution of Patients by Hospitalization Unit and Lp(a) Levels at Inclusion



eMethods 1. List of ICD-10 Used for Comorbidities Definitions

Variable	ICD-10 code	Label
History of ischemic heart disease	I20	Angina pectoris
History of ischemic heart disease	I200	Unstable angina
History of ischemic heart disease	I201	Angina pectoris with documented spasm
History of ischemic heart disease	I208	Other forms of angina pectoris
History of ischemic heart disease	I209	Angina pectoris, unspecified
History of ischemic heart disease	I21	ST elevation (STEMI) and non-ST elevation (NSTEMI) myocardial infarction
History of ischemic heart disease	I210	ST elevation (STEMI) myocardial infarction of anterior wall
History of ischemic heart disease	I2101	ST elevation (STEMI) myocardial infarction involving left main coronary artery
History of ischemic heart disease	I2102	ST elevation (STEMI) myocardial infarction involving left anterior descending coronary artery
History of ischemic heart disease	I2109	ST elevation (STEMI) myocardial infarction involving other coronary artery of anterior wall
History of ischemic heart disease	I211	ST elevation (STEMI) myocardial infarction of inferior wall
History of ischemic heart disease	I2111	ST elevation (STEMI) myocardial infarction involving right coronary artery
History of ischemic heart disease	I2119	ST elevation (STEMI) myocardial infarction involving other coronary artery of inferior wall
History of ischemic heart disease	I212	ST elevation (STEMI) myocardial infarction of other sites
History of ischemic heart disease	I2121	ST elevation (STEMI) myocardial infarction involving left circumflex coronary artery
History of ischemic heart disease	I2129	ST elevation (STEMI) myocardial infarction involving other sites
History of ischemic heart disease	I213	ST elevation (STEMI) myocardial infarction of unspecified site
History of ischemic heart disease	I214	Non-ST elevation (NSTEMI) myocardial infarction
History of ischemic heart disease	I22	Subsequent ST elevation (STEMI) and non-ST elevation (NSTEMI) myocardial infarction
History of ischemic heart disease	I220	Subsequent ST elevation (STEMI) myocardial infarction of anterior wall
History of ischemic heart disease	I221	Subsequent ST elevation (STEMI) myocardial infarction of inferior wall
History of ischemic heart disease	I222	Subsequent non-ST elevation (NSTEMI) myocardial infarction
History of ischemic heart disease	I228	Subsequent ST elevation (STEMI) myocardial infarction of other sites
History of ischemic heart disease	I229	Subsequent ST elevation (STEMI) myocardial infarction of unspecified site
History of ischemic heart disease	I23	Certain current complications following ST elevation (STEMI) and non-ST elevation (NSTEMI) myocardial infarction (within the 28 day period)
History of ischemic heart disease	I230	Hemopericardium as current complication following acute myocardial infarction
History of ischemic heart disease	I231	Atrial septal defect as current complication following acute myocardial infarction
History of ischemic heart disease	I232	Ventricular septal defect as current complication following acute myocardial infarction
History of ischemic heart disease	I233	Rupture of cardiac wall without hemopericardium as current complication following acute myocardial infarction
History of ischemic heart disease	I234	Rupture of chordae tendineae as current complication following acute myocardial infarction

History of ischemic heart disease	I235	Rupture of papillary muscle as current complication following acute myocardial infarction
History of ischemic heart disease	I236	Thrombosis of atrium, auricular appendage, and ventricle as current complications following acute myocardial infarction
History of ischemic heart disease	I237	Postinfarction angina
History of ischemic heart disease	I238	Other current complications following acute myocardial infarction
History of ischemic heart disease	I24	Other acute ischemic heart diseases
History of ischemic heart disease	I240	Acute coronary thrombosis not resulting in myocardial infarction
History of ischemic heart disease	I241	Dressler's syndrome
History of ischemic heart disease	I248	Other forms of acute ischemic heart disease
History of ischemic heart disease	I249	Acute ischemic heart disease, unspecified
History of ischemic heart disease	I25	Chronic ischemic heart disease
History of ischemic heart disease	I251	Atherosclerotic heart disease of native coronary artery
History of ischemic heart disease	I2510	Atherosclerotic heart disease of native coronary artery without angina pectoris
History of ischemic heart disease	I2511	Atherosclerotic heart disease of native coronary artery with angina pectoris
History of ischemic heart disease	I25110	Atherosclerotic heart disease of native coronary artery with unstable angina pectoris
History of ischemic heart disease	I25111	Atherosclerotic heart disease of native coronary artery with angina pectoris with documented spasm
History of ischemic heart disease	I25118	Atherosclerotic heart disease of native coronary artery with other forms of angina pectoris
History of ischemic heart disease	I25119	Atherosclerotic heart disease of native coronary artery with unspecified angina pectoris
History of ischemic heart disease	I252	Old myocardial infarction
History of ischemic heart disease	I253	Aneurysm of heart
History of ischemic heart disease	I254	Coronary artery aneurysm and dissection
History of ischemic heart disease	I2541	Coronary artery aneurysm
History of ischemic heart disease	I2542	Coronary artery dissection
History of ischemic heart disease	I255	Ischemic cardiomyopathy
History of ischemic heart disease	I256	Silent myocardial ischemia
History of ischemic heart disease	I257	Atherosclerosis of coronary artery bypass graft(s) and coronary artery of transplanted heart with angina pectoris
History of ischemic heart disease	I2570	Atherosclerosis of coronary artery bypass graft(s), unspecified, with angina pectoris
History of ischemic heart disease	I25700	Atherosclerosis of coronary artery bypass graft(s), unspecified, with unstable angina pectoris
History of ischemic heart disease	I25701	Atherosclerosis of coronary artery bypass graft(s), unspecified, with angina pectoris with documented spasm
History of ischemic heart disease	I25708	Atherosclerosis of coronary artery bypass graft(s), unspecified, with other forms of angina pectoris
History of ischemic heart disease	I25709	Atherosclerosis of coronary artery bypass graft(s), unspecified, with unspecified angina pectoris
History of ischemic heart disease	I2571	Atherosclerosis of autologous vein coronary artery bypass graft(s) with angina pectoris
History of ischemic heart disease	I25710	Atherosclerosis of autologous vein coronary artery bypass graft(s) with unstable angina pectoris

History of ischemic heart disease	I25711	Atherosclerosis of autologous vein coronary artery bypass graft(s) with angina pectoris with documented spasm
History of ischemic heart disease	I25718	Atherosclerosis of autologous vein coronary artery bypass graft(s) with other forms of angina pectoris
History of ischemic heart disease	I25719	Atherosclerosis of autologous vein coronary artery bypass graft(s) with unspecified angina pectoris
History of ischemic heart disease	I2572	Atherosclerosis of autologous artery coronary artery bypass graft(s) with angina pectoris
History of ischemic heart disease	I25720	Atherosclerosis of autologous artery coronary artery bypass graft(s) with unstable angina pectoris
History of ischemic heart disease	I25721	Atherosclerosis of autologous artery coronary artery bypass graft(s) with angina pectoris with documented spasm
History of ischemic heart disease	I25728	Atherosclerosis of autologous artery coronary artery bypass graft(s) with other forms of angina pectoris
History of ischemic heart disease	I25729	Atherosclerosis of autologous artery coronary artery bypass graft(s) with unspecified angina pectoris
History of ischemic heart disease	I2573	Atherosclerosis of nonautologous biological coronary artery bypass graft(s) with angina pectoris
History of ischemic heart disease	I25730	Atherosclerosis of nonautologous biological coronary artery bypass graft(s) with unstable angina pectoris
History of ischemic heart disease	I25731	Atherosclerosis of nonautologous biological coronary artery bypass graft(s) with angina pectoris with documented spasm
History of ischemic heart disease	I25738	Atherosclerosis of nonautologous biological coronary artery bypass graft(s) with other forms of angina pectoris
History of ischemic heart disease	I25739	Atherosclerosis of nonautologous biological coronary artery bypass graft(s) with unspecified angina pectoris
History of ischemic heart disease	I2575	Atherosclerosis of native coronary artery of transplanted heart with angina pectoris
History of ischemic heart disease	I25750	Atherosclerosis of native coronary artery of transplanted heart with unstable angina
History of ischemic heart disease	I25751	Atherosclerosis of native coronary artery of transplanted heart with angina pectoris with documented spasm
History of ischemic heart disease	I25758	Atherosclerosis of native coronary artery of transplanted heart with other forms of angina pectoris
History of ischemic heart disease	I25759	Atherosclerosis of native coronary artery of transplanted heart with unspecified angina pectoris
History of ischemic heart disease	I2576	Atherosclerosis of bypass graft of coronary artery of transplanted heart with angina pectoris
History of ischemic heart disease	I25760	Atherosclerosis of bypass graft of coronary artery of transplanted heart with unstable angina
History of ischemic heart disease	I25761	Atherosclerosis of bypass graft of coronary artery of transplanted heart with angina pectoris with documented spasm
History of ischemic heart disease	I25768	Atherosclerosis of bypass graft of coronary artery of transplanted heart with other forms of angina pectoris
History of ischemic heart disease	I25769	Atherosclerosis of bypass graft of coronary artery of transplanted heart with unspecified angina pectoris
History of ischemic heart disease	I2579	Atherosclerosis of other coronary artery bypass graft(s) with angina pectoris
History of ischemic heart disease	I25790	Atherosclerosis of other coronary artery bypass graft(s) with unstable angina pectoris
History of ischemic heart disease	I25791	Atherosclerosis of other coronary artery bypass graft(s) with angina pectoris with documented spasm
History of ischemic heart disease	I25798	Atherosclerosis of other coronary artery bypass graft(s) with other forms of angina pectoris
History of ischemic heart disease	I25799	Atherosclerosis of other coronary artery bypass graft(s) with unspecified angina pectoris
History of ischemic heart disease	I258	Other forms of chronic ischemic heart disease
History of ischemic heart disease	I2581	Atherosclerosis of other coronary vessels without angina pectoris
History of ischemic heart disease	I25810	Atherosclerosis of coronary artery bypass graft(s) without angina pectoris
History of ischemic heart disease	I25811	Atherosclerosis of native coronary artery of transplanted heart without angina pectoris

History of ischemic heart disease	I25812	Atherosclerosis of bypass graft of coronary artery of transplanted heart without angina pectoris
History of ischemic heart disease	I2582	Chronic total occlusion of coronary artery
History of ischemic heart disease	I2583	Coronary atherosclerosis due to lipid rich plaque
History of ischemic heart disease	I2584	Coronary atherosclerosis due to calcified coronary lesion
History of ischemic heart disease	I2589	Other forms of chronic ischemic heart disease
History of ischemic heart disease	I259	Chronic ischemic heart disease, unspecified
Peripheral artery disease	I702	Atherosclerosis of native arteries of the extremities
Peripheral artery disease	I7020	Unspecified atherosclerosis of native arteries of extremities
Peripheral artery disease	I7021	Atherosclerosis of native arteries of extremities with intermittent claudication
Peripheral artery disease	I743	Embolism and thrombosis of arteries of the lower extremities
History of stroke	I60	Nontraumatic subarachnoid hemorrhage
History of stroke	I600	Nontraumatic subarachnoid hemorrhage from carotid siphon and bifurcation
History of stroke	I6000	Nontraumatic subarachnoid hemorrhage from unspecified carotid siphon and bifurcation
History of stroke	I6001	Nontraumatic subarachnoid hemorrhage from right carotid siphon and bifurcation
History of stroke	I6002	Nontraumatic subarachnoid hemorrhage from left carotid siphon and bifurcation
History of stroke	I601	Nontraumatic subarachnoid hemorrhage from middle cerebral artery
History of stroke	I6010	Nontraumatic subarachnoid hemorrhage from unspecified middle cerebral artery
History of stroke	I6011	Nontraumatic subarachnoid hemorrhage from right middle cerebral artery
History of stroke	I6012	Nontraumatic subarachnoid hemorrhage from left middle cerebral artery
History of stroke	I602	Nontraumatic subarachnoid hemorrhage from anterior communicating artery
History of stroke	I6020	Nontraumatic subarachnoid hemorrhage from unspecified anterior communicating artery
History of stroke	I6021	Nontraumatic subarachnoid hemorrhage from right anterior communicating artery
History of stroke	I6022	Nontraumatic subarachnoid hemorrhage from left anterior communicating artery
History of stroke	I603	Nontraumatic subarachnoid hemorrhage from posterior communicating artery
History of stroke	I6030	Nontraumatic subarachnoid hemorrhage from unspecified posterior communicating artery
History of stroke	I6031	Nontraumatic subarachnoid hemorrhage from right posterior communicating artery
History of stroke	I6032	Nontraumatic subarachnoid hemorrhage from left posterior communicating artery
History of stroke	I604	Nontraumatic subarachnoid hemorrhage from basilar artery
History of stroke	I605	Nontraumatic subarachnoid hemorrhage from vertebral artery
History of stroke	I6050	Nontraumatic subarachnoid hemorrhage from unspecified vertebral artery
History of stroke	I6051	Nontraumatic subarachnoid hemorrhage from right vertebral artery
History of stroke	I6052	Nontraumatic subarachnoid hemorrhage from left vertebral artery
History of stroke	I606	Nontraumatic subarachnoid hemorrhage from other intracranial arteries
History of stroke	I607	Nontraumatic subarachnoid hemorrhage from unspecified intracranial artery
History of stroke	I608	Other nontraumatic subarachnoid hemorrhage
History of stroke	I609	Nontraumatic subarachnoid hemorrhage, unspecified
History of stroke	I61	Nontraumatic intracerebral hemorrhage
History of stroke	I610	Nontraumatic intracerebral hemorrhage in hemisphere, subcortical
History of stroke	I611	Nontraumatic intracerebral hemorrhage in hemisphere, cortical
History of stroke	I612	Nontraumatic intracerebral hemorrhage in hemisphere, unspecified
History of stroke	I613	Nontraumatic intracerebral hemorrhage in brain stem
History of stroke	I614	Nontraumatic intracerebral hemorrhage in cerebellum
History of stroke	I615	Nontraumatic intracerebral hemorrhage, intraventricular

History of stroke	I616	Nontraumatic intracerebral hemorrhage, multiple localized
History of stroke	I618	Other nontraumatic intracerebral hemorrhage
History of stroke	I619	Nontraumatic intracerebral hemorrhage, unspecified
History of stroke	I62	Other and unspecified nontraumatic intracranial hemorrhage
History of stroke	I620	Nontraumatic subdural hemorrhage
History of stroke	I6200	Nontraumatic subdural hemorrhage, unspecified
History of stroke	I6201	Nontraumatic acute subdural hemorrhage
History of stroke	I6202	Nontraumatic subacute subdural hemorrhage
History of stroke	I6203	Nontraumatic chronic subdural hemorrhage
History of stroke	I621	Nontraumatic extradural hemorrhage
History of stroke	I629	Nontraumatic intracranial hemorrhage, unspecified
History of stroke	I63	Cerebral infarction
History of stroke	I630	Cerebral infarction due to thrombosis of precerebral arteries
History of stroke	I6300	Cerebral infarction due to thrombosis of unspecified precerebral artery
History of stroke	I6301	Cerebral infarction due to thrombosis of vertebral artery
History of stroke	I63011	Cerebral infarction due to thrombosis of right vertebral artery
History of stroke	I63012	Cerebral infarction due to thrombosis of left vertebral artery
History of stroke	I63019	Cerebral infarction due to thrombosis of unspecified vertebral artery
History of stroke	I6302	Cerebral infarction due to thrombosis of basilar artery
History of stroke	I6303	Cerebral infarction due to thrombosis of carotid artery
History of stroke	I63031	Cerebral infarction due to thrombosis of right carotid artery
History of stroke	I63032	Cerebral infarction due to thrombosis of left carotid artery
History of stroke	I63039	Cerebral infarction due to thrombosis of unspecified carotid artery
History of stroke	I6309	Cerebral infarction due to thrombosis of other precerebral artery
History of stroke	I631	Cerebral infarction due to embolism of precerebral arteries
History of stroke	I6310	Cerebral infarction due to embolism of unspecified precerebral artery
History of stroke	I6311	Cerebral infarction due to embolism of vertebral artery
History of stroke	I63111	Cerebral infarction due to embolism of right vertebral artery
History of stroke	I63112	Cerebral infarction due to embolism of left vertebral artery
History of stroke	I63119	Cerebral infarction due to embolism of unspecified vertebral artery
History of stroke	I6312	Cerebral infarction due to embolism of basilar artery
History of stroke	I6313	Cerebral infarction due to embolism of carotid artery
History of stroke	I63131	Cerebral infarction due to embolism of right carotid artery
History of stroke	I63132	Cerebral infarction due to embolism of left carotid artery
History of stroke	I63139	Cerebral infarction due to embolism of unspecified carotid artery
History of stroke	I6319	Cerebral infarction due to embolism of other precerebral artery
History of stroke	I632	Cerebral infarction due to unspecified occlusion or stenosis of precerebral arteries
History of stroke	I6320	Cerebral infarction due to unspecified occlusion or stenosis of unspecified precerebral arteries
History of stroke	I6321	Cerebral infarction due to unspecified occlusion or stenosis of vertebral arteries
History of stroke	I63211	Cerebral infarction due to unspecified occlusion or stenosis of right vertebral arteries
History of stroke	I63212	Cerebral infarction due to unspecified occlusion or stenosis of left vertebral arteries
History of stroke	I63219	Cerebral infarction due to unspecified occlusion or stenosis of unspecified vertebral arteries
History of stroke	I6322	Cerebral infarction due to unspecified occlusion or stenosis of basilar arteries
History of stroke	I6323	Cerebral infarction due to unspecified occlusion or stenosis of carotid arteries
History of stroke	I63231	Cerebral infarction due to unspecified occlusion or stenosis of right carotid arteries
History of stroke	I63232	Cerebral infarction due to unspecified occlusion or stenosis of left carotid arteries
History of stroke	I63239	Cerebral infarction due to unspecified occlusion or stenosis of unspecified carotid arteries
History of stroke	I6329	Cerebral infarction due to unspecified occlusion or stenosis of other precerebral arteries

History of stroke	I633	Cerebral infarction due to thrombosis of cerebral arteries
History of stroke	I6330	Cerebral infarction due to thrombosis of unspecified cerebral artery
History of stroke	I6331	Cerebral infarction due to thrombosis of middle cerebral artery
History of stroke	I63311	Cerebral infarction due to thrombosis of right middle cerebral artery
History of stroke	I63312	Cerebral infarction due to thrombosis of left middle cerebral artery
History of stroke	I63319	Cerebral infarction due to thrombosis of unspecified middle cerebral artery
History of stroke	I6332	Cerebral infarction due to thrombosis of anterior cerebral artery
History of stroke	I63321	Cerebral infarction due to thrombosis of right anterior cerebral artery
History of stroke	I63322	Cerebral infarction due to thrombosis of left anterior cerebral artery
History of stroke	I63329	Cerebral infarction due to thrombosis of unspecified anterior cerebral artery
History of stroke	I6333	Cerebral infarction due to thrombosis of posterior cerebral artery
History of stroke	I63331	Cerebral infarction due to thrombosis of right posterior cerebral artery
History of stroke	I63332	Cerebral infarction due to thrombosis of left posterior cerebral artery
History of stroke	I63339	Cerebral infarction due to thrombosis of unspecified posterior cerebral artery
History of stroke	I6334	Cerebral infarction due to thrombosis of cerebellar artery
History of stroke	I63341	Cerebral infarction due to thrombosis of right cerebellar artery
History of stroke	I63342	Cerebral infarction due to thrombosis of left cerebellar artery
History of stroke	I63349	Cerebral infarction due to thrombosis of unspecified cerebellar artery
History of stroke	I6339	Cerebral infarction due to thrombosis of other cerebral artery
History of stroke	I634	Cerebral infarction due to embolism of cerebral arteries
History of stroke	I6340	Cerebral infarction due to embolism of unspecified cerebral artery
History of stroke	I6341	Cerebral infarction due to embolism of middle cerebral artery
History of stroke	I63411	Cerebral infarction due to embolism of right middle cerebral artery
History of stroke	I63412	Cerebral infarction due to embolism of left middle cerebral artery
History of stroke	I63419	Cerebral infarction due to embolism of unspecified middle cerebral artery
History of stroke	I6342	Cerebral infarction due to embolism of anterior cerebral artery
History of stroke	I63421	Cerebral infarction due to embolism of right anterior cerebral artery
History of stroke	I63422	Cerebral infarction due to embolism of left anterior cerebral artery
History of stroke	I63429	Cerebral infarction due to embolism of unspecified anterior cerebral artery
History of stroke	I6343	Cerebral infarction due to embolism of posterior cerebral artery
History of stroke	I63431	Cerebral infarction due to embolism of right posterior cerebral artery
History of stroke	I63432	Cerebral infarction due to embolism of left posterior cerebral artery
History of stroke	I63439	Cerebral infarction due to embolism of unspecified posterior cerebral artery
History of stroke	I6344	Cerebral infarction due to embolism of cerebellar artery
History of stroke	I63441	Cerebral infarction due to embolism of right cerebellar artery
History of stroke	I63442	Cerebral infarction due to embolism of left cerebellar artery
History of stroke	I63449	Cerebral infarction due to embolism of unspecified cerebellar artery
History of stroke	I6349	Cerebral infarction due to embolism of other cerebral artery
History of stroke	I635	Cerebral infarction due to unspecified occlusion or stenosis of cerebral arteries
History of stroke	I6350	Cerebral infarction due to unspecified occlusion or stenosis of unspecified cerebral artery
History of stroke	I6351	Cerebral infarction due to unspecified occlusion or stenosis of middle cerebral artery
History of stroke	I63511	Cerebral infarction due to unspecified occlusion or stenosis of right middle cerebral artery
History of stroke	I63512	Cerebral infarction due to unspecified occlusion or stenosis of left middle cerebral artery
History of stroke	I63519	Cerebral infarction due to unspecified occlusion or stenosis of unspecified middle cerebral artery
History of stroke	I6352	Cerebral infarction due to unspecified occlusion or stenosis of anterior cerebral artery
History of stroke	I63521	Cerebral infarction due to unspecified occlusion or stenosis of right anterior cerebral artery
History of stroke	I63522	Cerebral infarction due to unspecified occlusion or stenosis of left anterior cerebral artery

History of stroke	I63529	Cerebral infarction due to unspecified occlusion or stenosis of unspecified anterior cerebral artery
History of stroke	I6353	Cerebral infarction due to unspecified occlusion or stenosis of posterior cerebral artery
History of stroke	I63531	Cerebral infarction due to unspecified occlusion or stenosis of right posterior cerebral artery
History of stroke	I63532	Cerebral infarction due to unspecified occlusion or stenosis of left posterior cerebral artery
History of stroke	I63539	Cerebral infarction due to unspecified occlusion or stenosis of unspecified posterior cerebral artery
History of stroke	I6354	Cerebral infarction due to unspecified occlusion or stenosis of cerebellar artery
History of stroke	I63541	Cerebral infarction due to unspecified occlusion or stenosis of right cerebellar artery
History of stroke	I63542	Cerebral infarction due to unspecified occlusion or stenosis of left cerebellar artery
History of stroke	I63549	Cerebral infarction due to unspecified occlusion or stenosis of unspecified cerebellar artery
History of stroke	I6359	Cerebral infarction due to unspecified occlusion or stenosis of other cerebral artery
History of stroke	I636	Cerebral infarction due to cerebral venous thrombosis, nonpyogenic
History of stroke	I638	Other cerebral infarction
History of stroke	I639	Cerebral infarction, unspecified
History of stroke	I69	Sequelae of cerebrovascular disease
History of stroke	I690	Sequelae of nontraumatic subarachnoid hemorrhage
History of stroke	I6900	Unspecified sequelae of nontraumatic subarachnoid hemorrhage
History of stroke	I6901	Cognitive deficits following nontraumatic subarachnoid hemorrhage
History of stroke	I6902	Speech and language deficits following nontraumatic subarachnoid hemorrhage
History of stroke	I69020	Aphasia following nontraumatic subarachnoid hemorrhage
History of stroke	I69021	Dysphasia following nontraumatic subarachnoid hemorrhage
History of stroke	I69022	Dysarthria following nontraumatic subarachnoid hemorrhage
History of stroke	I69023	Fluency disorder following nontraumatic subarachnoid hemorrhage
History of stroke	I69028	Other speech and language deficits following nontraumatic subarachnoid hemorrhage
History of stroke	I6903	Monoplegia of upper limb following nontraumatic subarachnoid hemorrhage
History of stroke	I69031	Monoplegia of upper limb following nontraumatic subarachnoid hemorrhage affecting right dominant side
History of stroke	I69032	Monoplegia of upper limb following nontraumatic subarachnoid hemorrhage affecting left dominant side
History of stroke	I69033	Monoplegia of upper limb following nontraumatic subarachnoid hemorrhage affecting right non-dominant side
History of stroke	I69034	Monoplegia of upper limb following nontraumatic subarachnoid hemorrhage affecting left non-dominant side
History of stroke	I69039	Monoplegia of upper limb following nontraumatic subarachnoid hemorrhage affecting unspecified side
History of stroke	I6904	Monoplegia of lower limb following nontraumatic subarachnoid hemorrhage
History of stroke	I69041	Monoplegia of lower limb following nontraumatic subarachnoid hemorrhage affecting right dominant side
History of stroke	I69042	Monoplegia of lower limb following nontraumatic subarachnoid hemorrhage affecting left dominant side
History of stroke	I69043	Monoplegia of lower limb following nontraumatic subarachnoid hemorrhage affecting right non-dominant side
History of stroke	I69044	Monoplegia of lower limb following nontraumatic subarachnoid hemorrhage affecting left non-dominant side
History of stroke	I69049	Monoplegia of lower limb following nontraumatic subarachnoid hemorrhage affecting unspecified side
History of stroke	I6905	Hemiplegia and hemiparesis following nontraumatic subarachnoid hemorrhage
History of stroke	I69051	Hemiplegia and hemiparesis following nontraumatic subarachnoid hemorrhage affecting right dominant side
History of stroke	I69052	Hemiplegia and hemiparesis following nontraumatic subarachnoid hemorrhage affecting left dominant side
History of stroke	I69053	Hemiplegia and hemiparesis following nontraumatic subarachnoid hemorrhage affecting right non-dominant side

History of stroke	I69054	Hemiplegia and hemiparesis following nontraumatic subarachnoid hemorrhage affecting left non-dominant side
History of stroke	I69059	Hemiplegia and hemiparesis following nontraumatic subarachnoid hemorrhage affecting unspecified side
History of stroke	I6906	Other paralytic syndrome following nontraumatic subarachnoid hemorrhage
History of stroke	I69061	Other paralytic syndrome following nontraumatic subarachnoid hemorrhage affecting right dominant side
History of stroke	I69062	Other paralytic syndrome following nontraumatic subarachnoid hemorrhage affecting left dominant side
History of stroke	I69063	Other paralytic syndrome following nontraumatic subarachnoid hemorrhage affecting right non-dominant side
History of stroke	I69064	Other paralytic syndrome following nontraumatic subarachnoid hemorrhage affecting left non-dominant side
History of stroke	I69065	Other paralytic syndrome following nontraumatic subarachnoid hemorrhage, bilateral
History of stroke	I69069	Other paralytic syndrome following nontraumatic subarachnoid hemorrhage affecting unspecified side
History of stroke	I6909	Other sequelae of nontraumatic subarachnoid hemorrhage
History of stroke	I69090	Apraxia following nontraumatic subarachnoid hemorrhage
History of stroke	I69091	Dysphagia following nontraumatic subarachnoid hemorrhage
History of stroke	I69092	Facial weakness following nontraumatic subarachnoid hemorrhage
History of stroke	I69093	Ataxia following nontraumatic subarachnoid hemorrhage
History of stroke	I69098	Other sequelae following nontraumatic subarachnoid hemorrhage
History of stroke	I691	Sequelae of nontraumatic intracerebral hemorrhage
History of stroke	I6910	Unspecified sequelae of nontraumatic intracerebral hemorrhage
History of stroke	I6911	Cognitive deficits following nontraumatic intracerebral hemorrhage
History of stroke	I6912	Speech and language deficits following nontraumatic intracerebral hemorrhage
History of stroke	I69120	Aphasia following nontraumatic intracerebral hemorrhage
History of stroke	I69121	Dysphasia following nontraumatic intracerebral hemorrhage
History of stroke	I69122	Dysarthria following nontraumatic intracerebral hemorrhage
History of stroke	I69123	Fluency disorder following nontraumatic intracerebral hemorrhage
History of stroke	I69128	Other speech and language deficits following nontraumatic intracerebral hemorrhage
History of stroke	I6913	Monoplegia of upper limb following nontraumatic intracerebral hemorrhage
History of stroke	I69131	Monoplegia of upper limb following nontraumatic intracerebral hemorrhage affecting right dominant side
History of stroke	I69132	Monoplegia of upper limb following nontraumatic intracerebral hemorrhage affecting left dominant side
History of stroke	I69133	Monoplegia of upper limb following nontraumatic intracerebral hemorrhage affecting right non-dominant side
History of stroke	I69134	Monoplegia of upper limb following nontraumatic intracerebral hemorrhage affecting left non-dominant side
History of stroke	I69139	Monoplegia of upper limb following nontraumatic intracerebral hemorrhage affecting unspecified side
History of stroke	I6914	Monoplegia of lower limb following nontraumatic intracerebral hemorrhage
History of stroke	I69141	Monoplegia of lower limb following nontraumatic intracerebral hemorrhage affecting right dominant side
History of stroke	I69142	Monoplegia of lower limb following nontraumatic intracerebral hemorrhage affecting left dominant side
History of stroke	I69143	Monoplegia of lower limb following nontraumatic intracerebral hemorrhage affecting right non-dominant side
History of stroke	I69144	Monoplegia of lower limb following nontraumatic intracerebral hemorrhage affecting left non-dominant side
History of stroke	I69149	Monoplegia of lower limb following nontraumatic intracerebral hemorrhage affecting unspecified side
History of stroke	I6915	Hemiplegia and hemiparesis following nontraumatic intracerebral hemorrhage
History of stroke	I69151	Hemiplegia and hemiparesis following nontraumatic intracerebral hemorrhage affecting right dominant side
History of stroke	I69152	Hemiplegia and hemiparesis following nontraumatic intracerebral hemorrhage affecting left dominant side

History of stroke	I69153	Hemiplegia and hemiparesis following nontraumatic intracerebral hemorrhage affecting right non-dominant side
History of stroke	I69154	Hemiplegia and hemiparesis following nontraumatic intracerebral hemorrhage affecting left non-dominant side
History of stroke	I69159	Hemiplegia and hemiparesis following nontraumatic intracerebral hemorrhage affecting unspecified side
History of stroke	I6916	Other paralytic syndrome following nontraumatic intracerebral hemorrhage
History of stroke	I69161	Other paralytic syndrome following nontraumatic intracerebral hemorrhage affecting right dominant side
History of stroke	I69162	Other paralytic syndrome following nontraumatic intracerebral hemorrhage affecting left dominant side
History of stroke	I69163	Other paralytic syndrome following nontraumatic intracerebral hemorrhage affecting right non-dominant side
History of stroke	I69164	Other paralytic syndrome following nontraumatic intracerebral hemorrhage affecting left non-dominant side
History of stroke	I69165	Other paralytic syndrome following nontraumatic intracerebral hemorrhage, bilateral
History of stroke	I69169	Other paralytic syndrome following nontraumatic intracerebral hemorrhage affecting unspecified side
History of stroke	I6919	Other sequelae of nontraumatic intracerebral hemorrhage
History of stroke	I69190	Apraxia following nontraumatic intracerebral hemorrhage
History of stroke	I69191	Dysphagia following nontraumatic intracerebral hemorrhage
History of stroke	I69192	Facial weakness following nontraumatic intracerebral hemorrhage
History of stroke	I69193	Ataxia following nontraumatic intracerebral hemorrhage
History of stroke	I69198	Other sequelae of nontraumatic intracerebral hemorrhage
History of stroke	I692	Sequelae of other nontraumatic intracranial hemorrhage
History of stroke	I6920	Unspecified sequelae of other nontraumatic intracranial hemorrhage
History of stroke	I6921	Cognitive deficits following other nontraumatic intracranial hemorrhage
History of stroke	I6922	Speech and language deficits following other nontraumatic intracranial hemorrhage
History of stroke	I69220	Aphasia following other nontraumatic intracranial hemorrhage
History of stroke	I69221	Dysphasia following other nontraumatic intracranial hemorrhage
History of stroke	I69222	Dysarthria following other nontraumatic intracranial hemorrhage
History of stroke	I69223	Fluency disorder following other nontraumatic intracranial hemorrhage
History of stroke	I69228	Other speech and language deficits following other nontraumatic intracranial hemorrhage
History of stroke	I6923	Monoplegia of upper limb following other nontraumatic intracranial hemorrhage
History of stroke	I69231	Monoplegia of upper limb following other nontraumatic intracranial hemorrhage affecting right dominant side
History of stroke	I69232	Monoplegia of upper limb following other nontraumatic intracranial hemorrhage affecting left dominant side
History of stroke	I69233	Monoplegia of upper limb following other nontraumatic intracranial hemorrhage affecting right non-dominant side
History of stroke	I69234	Monoplegia of upper limb following other nontraumatic intracranial hemorrhage affecting left non-dominant side
History of stroke	I69239	Monoplegia of upper limb following other nontraumatic intracranial hemorrhage affecting unspecified side
History of stroke	I6924	Monoplegia of lower limb following other nontraumatic intracranial hemorrhage
History of stroke	I69241	Monoplegia of lower limb following other nontraumatic intracranial hemorrhage affecting right dominant side
History of stroke	I69242	Monoplegia of lower limb following other nontraumatic intracranial hemorrhage affecting left dominant side
History of stroke	I69243	Monoplegia of lower limb following other nontraumatic intracranial hemorrhage affecting right non-dominant side
History of stroke	I69244	Monoplegia of lower limb following other nontraumatic intracranial hemorrhage affecting left non-dominant side
History of stroke	I69249	Monoplegia of lower limb following other nontraumatic intracranial hemorrhage affecting unspecified side
History of stroke	I6925	Hemiplegia and hemiparesis following other nontraumatic intracranial hemorrhage

History of stroke	I69251	Hemiplegia and hemiparesis following other nontraumatic intracranial hemorrhage affecting right dominant side
History of stroke	I69252	Hemiplegia and hemiparesis following other nontraumatic intracranial hemorrhage affecting left dominant side
History of stroke	I69253	Hemiplegia and hemiparesis following other nontraumatic intracranial hemorrhage affecting right non-dominant side
History of stroke	I69254	Hemiplegia and hemiparesis following other nontraumatic intracranial hemorrhage affecting left non-dominant side
History of stroke	I69259	Hemiplegia and hemiparesis following other nontraumatic intracranial hemorrhage affecting unspecified side
History of stroke	I6926	Other paralytic syndrome following other nontraumatic intracranial hemorrhage
History of stroke	I69261	Other paralytic syndrome following other nontraumatic intracranial hemorrhage affecting right dominant side
History of stroke	I69262	Other paralytic syndrome following other nontraumatic intracranial hemorrhage affecting left dominant side
History of stroke	I69263	Other paralytic syndrome following other nontraumatic intracranial hemorrhage affecting right non-dominant side
History of stroke	I69264	Other paralytic syndrome following other nontraumatic intracranial hemorrhage affecting left non-dominant side
History of stroke	I69265	Other paralytic syndrome following other nontraumatic intracranial hemorrhage, bilateral
History of stroke	I69269	Other paralytic syndrome following other nontraumatic intracranial hemorrhage affecting unspecified side
History of stroke	I6929	Other sequelae of other nontraumatic intracranial hemorrhage
History of stroke	I69290	Apraxia following other nontraumatic intracranial hemorrhage
History of stroke	I69291	Dysphagia following other nontraumatic intracranial hemorrhage
History of stroke	I69292	Facial weakness following other nontraumatic intracranial hemorrhage
History of stroke	I69293	Ataxia following other nontraumatic intracranial hemorrhage
History of stroke	I69298	Other sequelae of other nontraumatic intracranial hemorrhage
History of stroke	I693	Sequelae of cerebral infarction
History of stroke	I6930	Unspecified sequelae of cerebral infarction
History of stroke	I6931	Cognitive deficits following cerebral infarction
History of stroke	I6932	Speech and language deficits following cerebral infarction
History of stroke	I69320	Aphasia following cerebral infarction
History of stroke	I69321	Dysphasia following cerebral infarction
History of stroke	I69322	Dysarthria following cerebral infarction
History of stroke	I69323	Fluency disorder following cerebral infarction
History of stroke	I69328	Other speech and language deficits following cerebral infarction
History of stroke	I6933	Monoplegia of upper limb following cerebral infarction
History of stroke	I69331	Monoplegia of upper limb following cerebral infarction affecting right dominant side
History of stroke	I69332	Monoplegia of upper limb following cerebral infarction affecting left dominant side
History of stroke	I69333	Monoplegia of upper limb following cerebral infarction affecting right non-dominant side
History of stroke	I69334	Monoplegia of upper limb following cerebral infarction affecting left non-dominant side
History of stroke	I69339	Monoplegia of upper limb following cerebral infarction affecting unspecified side
History of stroke	I6934	Monoplegia of lower limb following cerebral infarction
History of stroke	I69341	Monoplegia of lower limb following cerebral infarction affecting right dominant side
History of stroke	I69342	Monoplegia of lower limb following cerebral infarction affecting left dominant side
History of stroke	I69343	Monoplegia of lower limb following cerebral infarction affecting right non-dominant side
History of stroke	I69344	Monoplegia of lower limb following cerebral infarction affecting left non-dominant side
History of stroke	I69349	Monoplegia of lower limb following cerebral infarction affecting unspecified side
History of stroke	I6935	Hemiplegia and hemiparesis following cerebral infarction

History of stroke	I69351	Hemiplegia and hemiparesis following cerebral infarction affecting right dominant side
History of stroke	I69352	Hemiplegia and hemiparesis following cerebral infarction affecting left dominant side
History of stroke	I69353	Hemiplegia and hemiparesis following cerebral infarction affecting right non-dominant side
History of stroke	I69354	Hemiplegia and hemiparesis following cerebral infarction affecting left non-dominant side
History of stroke	I69359	Hemiplegia and hemiparesis following cerebral infarction affecting unspecified side
History of stroke	I6936	Other paralytic syndrome following cerebral infarction
History of stroke	I69361	Other paralytic syndrome following cerebral infarction affecting right dominant side
History of stroke	I69362	Other paralytic syndrome following cerebral infarction affecting left dominant side
History of stroke	I69363	Other paralytic syndrome following cerebral infarction affecting right non-dominant side
History of stroke	I69364	Other paralytic syndrome following cerebral infarction affecting left non-dominant side
History of stroke	I69365	Other paralytic syndrome following cerebral infarction, bilateral
History of stroke	I69369	Other paralytic syndrome following cerebral infarction affecting unspecified side
History of stroke	I6939	Other sequelae of cerebral infarction
History of stroke	I69390	Apraxia following cerebral infarction
History of stroke	I69391	Dysphagia following cerebral infarction
History of stroke	I69392	Facial weakness following cerebral infarction
History of stroke	I69393	Ataxia following cerebral infarction
History of stroke	I69398	Other sequelae of cerebral infarction
History of stroke	I698	Sequelae of other cerebrovascular diseases
History of stroke	I6980	Unspecified sequelae of other cerebrovascular disease
History of stroke	I6981	Cognitive deficits following other cerebrovascular disease
History of stroke	I6982	Speech and language deficits following other cerebrovascular disease
History of stroke	I69820	Aphasia following other cerebrovascular disease
History of stroke	I69821	Dysphasia following other cerebrovascular disease
History of stroke	I69822	Dysarthria following other cerebrovascular disease
History of stroke	I69823	Fluency disorder following other cerebrovascular disease
History of stroke	I69828	Other speech and language deficits following other cerebrovascular disease
History of stroke	I6983	Monoplegia of upper limb following other cerebrovascular disease
History of stroke	I69831	Monoplegia of upper limb following other cerebrovascular disease affecting right dominant side
History of stroke	I69832	Monoplegia of upper limb following other cerebrovascular disease affecting left dominant side
History of stroke	I69833	Monoplegia of upper limb following other cerebrovascular disease affecting right non-dominant side
History of stroke	I69834	Monoplegia of upper limb following other cerebrovascular disease affecting left non-dominant side
History of stroke	I69839	Monoplegia of upper limb following other cerebrovascular disease affecting unspecified side
History of stroke	I6984	Monoplegia of lower limb following other cerebrovascular disease
History of stroke	I69841	Monoplegia of lower limb following other cerebrovascular disease affecting right dominant side
History of stroke	I69842	Monoplegia of lower limb following other cerebrovascular disease affecting left dominant side
History of stroke	I69843	Monoplegia of lower limb following other cerebrovascular disease affecting right non-dominant side
History of stroke	I69844	Monoplegia of lower limb following other cerebrovascular disease affecting left non-dominant side
History of stroke	I69849	Monoplegia of lower limb following other cerebrovascular disease affecting unspecified side
History of stroke	I6985	Hemiplegia and hemiparesis following other cerebrovascular disease

History of stroke	I69851	Hemiplegia and hemiparesis following other cerebrovascular disease affecting right dominant side
History of stroke	I69852	Hemiplegia and hemiparesis following other cerebrovascular disease affecting left dominant side
History of stroke	I69853	Hemiplegia and hemiparesis following other cerebrovascular disease affecting right non-dominant side
History of stroke	I69854	Hemiplegia and hemiparesis following other cerebrovascular disease affecting left non-dominant side
History of stroke	I69859	Hemiplegia and hemiparesis following other cerebrovascular disease affecting unspecified side
History of stroke	I6986	Other paralytic syndrome following other cerebrovascular disease
History of stroke	I69861	Other paralytic syndrome following other cerebrovascular disease affecting right dominant side
History of stroke	I69862	Other paralytic syndrome following other cerebrovascular disease affecting left dominant side
History of stroke	I69863	Other paralytic syndrome following other cerebrovascular disease affecting right non-dominant side
History of stroke	I69864	Other paralytic syndrome following other cerebrovascular disease affecting left non-dominant side
History of stroke	I69865	Other paralytic syndrome following other cerebrovascular disease, bilateral
History of stroke	I69869	Other paralytic syndrome following other cerebrovascular disease affecting unspecified side
History of stroke	I6989	Other sequelae of other cerebrovascular disease
History of stroke	I69890	Apraxia following other cerebrovascular disease
History of stroke	I69891	Dysphagia following other cerebrovascular disease
History of stroke	I69892	Facial weakness following other cerebrovascular disease
History of stroke	I69893	Ataxia following other cerebrovascular disease
History of stroke	I69898	Other sequelae of other cerebrovascular disease
History of stroke	I699	Sequelae of unspecified cerebrovascular diseases
History of stroke	I6990	Unspecified sequelae of unspecified cerebrovascular disease
History of stroke	I6991	Cognitive deficits following unspecified cerebrovascular disease
History of stroke	I6992	Speech and language deficits following unspecified cerebrovascular disease
History of stroke	I69920	Aphasia following unspecified cerebrovascular disease
History of stroke	I69921	Dysphasia following unspecified cerebrovascular disease
History of stroke	I69922	Dysarthria following unspecified cerebrovascular disease
History of stroke	I69923	Fluency disorder following unspecified cerebrovascular disease
History of stroke	I69928	Other speech and language deficits following unspecified cerebrovascular disease
History of stroke	I6993	Monoplegia of upper limb following unspecified cerebrovascular disease
History of stroke	I69931	Monoplegia of upper limb following unspecified cerebrovascular disease affecting right dominant side
History of stroke	I69932	Monoplegia of upper limb following unspecified cerebrovascular disease affecting left dominant side
History of stroke	I69933	Monoplegia of upper limb following unspecified cerebrovascular disease affecting right non-dominant side
History of stroke	I69934	Monoplegia of upper limb following unspecified cerebrovascular disease affecting left non-dominant side
History of stroke	I69939	Monoplegia of upper limb following unspecified cerebrovascular disease affecting unspecified side
History of stroke	I6994	Monoplegia of lower limb following unspecified cerebrovascular disease
History of stroke	I69941	Monoplegia of lower limb following unspecified cerebrovascular disease affecting right dominant side
History of stroke	I69942	Monoplegia of lower limb following unspecified cerebrovascular disease affecting left dominant side
History of stroke	I69943	Monoplegia of lower limb following unspecified cerebrovascular disease affecting right non-dominant side
History of stroke	I69944	Monoplegia of lower limb following unspecified cerebrovascular disease affecting left non-dominant side
History of stroke	I69949	Monoplegia of lower limb following unspecified cerebrovascular disease affecting unspecified side
History of stroke	I6995	Hemiplegia and hemiparesis following unspecified cerebrovascular disease

History of stroke	I69951	Hemiplegia and hemiparesis following unspecified cerebrovascular disease affecting right dominant side
History of stroke	I69952	Hemiplegia and hemiparesis following unspecified cerebrovascular disease affecting left dominant side
History of stroke	I69953	Hemiplegia and hemiparesis following unspecified cerebrovascular disease affecting right non-dominant side
History of stroke	I69954	Hemiplegia and hemiparesis following unspecified cerebrovascular disease affecting left non-dominant side
History of stroke	I69959	Hemiplegia and hemiparesis following unspecified cerebrovascular disease affecting unspecified side
History of stroke	I6996	Other paralytic syndrome following unspecified cerebrovascular disease
History of stroke	I69961	Other paralytic syndrome following unspecified cerebrovascular disease affecting right dominant side
History of stroke	I69962	Other paralytic syndrome following unspecified cerebrovascular disease affecting left dominant side
History of stroke	I69963	Other paralytic syndrome following unspecified cerebrovascular disease affecting right non-dominant side
History of stroke	I69964	Other paralytic syndrome following unspecified cerebrovascular disease affecting left non-dominant side
History of stroke	I69965	Other paralytic syndrome following unspecified cerebrovascular disease, bilateral
History of stroke	I69969	Other paralytic syndrome following unspecified cerebrovascular disease affecting unspecified side
History of stroke	I6999	Other sequelae of unspecified cerebrovascular disease
History of stroke	I69990	Apraxia following unspecified cerebrovascular disease
History of stroke	I69991	Dysphagia following unspecified cerebrovascular disease
History of stroke	I69992	Facial weakness following unspecified cerebrovascular disease
History of stroke	I69993	Ataxia following unspecified cerebrovascular disease
History of stroke	I69998	Other sequelae following unspecified cerebrovascular disease
Arterial hypertension	I10	Essential (primary) hypertension
Arterial hypertension	I11	Hypertensive heart disease
Arterial hypertension	I110	Hypertensive heart disease with heart failure
Arterial hypertension	I119	Hypertensive heart disease without heart failure
Arterial hypertension	I12	Hypertensive chronic kidney disease
Arterial hypertension	I120	Hypertensive chronic kidney disease with stage 5 chronic kidney disease or end stage renal disease
Arterial hypertension	I129	Hypertensive chronic kidney disease with stage 1 through stage 4 chronic kidney disease, or unspecified chronic kidney disease
Arterial hypertension	I13	Hypertensive heart and chronic kidney disease
Arterial hypertension	I130	Hypertensive heart and chronic kidney disease with heart failure and stage 1 through stage 4 chronic kidney disease, or unspecified chronic kidney disease
Arterial hypertension	I131	Hypertensive heart and chronic kidney disease without heart failure
Arterial hypertension	I1310	Hypertensive heart and chronic kidney disease without heart failure, with stage 1 through stage 4 chronic kidney disease, or unspecified chronic kidney disease
Arterial hypertension	I1311	Hypertensive heart and chronic kidney disease without heart failure, with stage 5 chronic kidney disease, or end stage renal disease
Arterial hypertension	I132	Hypertensive heart and chronic kidney disease with heart failure and with stage 5 chronic kidney disease, or end stage renal disease
Arterial hypertension	I15	Secondary hypertension
Arterial hypertension	I150	Renovascular hypertension
Arterial hypertension	I151	Hypertension secondary to other renal disorders
Arterial hypertension	I152	Hypertension secondary to endocrine disorders

Arterial hypertension	I158	Other secondary hypertension
Arterial hypertension	I159	Secondary hypertension, unspecified
Former smoker	F1720	Tobacco dependence syndrome, currently abstinent
Former smoker	F1721	Tobacco dependence syndrome, currently abstinent but in a protected environment
Former smoker	F1722	Tobacco dependence syndrome, currently on a maintenance or substitution diet under medical supervision
Former smoker	F1723	Tobacco dependence syndrome, currently abstinent, but taking aversive or blocking medications
Former smoker	Z864	Personal history of substance abuse (former smoker)
Current smoker	F170	Mental and behavioral disorders related to tobacco use: acute intoxication
Current smoker	F1700	Mental and behavioural disorders due to acute tobacco intoxication without complications
Current smoker	F1701	Mental and behavioural disorders due to acute tobacco intoxication with trauma or other physical injury
Current smoker	F1702	Mental and behavioral disorders due to acute tobacco intoxication with other medical complications
Current smoker	F1703	Mental and behavioral disorders due to acute tobacco intoxication, with delirium
Current smoker	F1704	Mental and behavioral disorders due to acute tobacco intoxication, with perceptual distortion
Current smoker	F1705	Mental and behavioural disorders due to acute tobacco intoxication, with coma
Current smoker	F1706	Mental and behavioural disorders due to acute tobacco intoxication, with convulsions
Current smoker	F1707	Mental and behavioural disorders due to acute pathological tobacco intoxication
Current smoker	F171	Mental and behavioural disorders related to tobacco use: harmful use
Current smoker	F1724	Tobacco dependence syndrome, current use
Current smoker	F17240	Tobacco dependence syndrome, current use, no physical symptoms
Current smoker	F17241	Tobacco dependence syndrome, current use, with physical symptoms
Current smoker	F1725	Tobacco dependence syndrome, ongoing use
Current smoker	F1726	Tobacco dependence syndrome, episodic use
Current smoker	F173	Mental and behavioral disorders related to tobacco use: withdrawal syndrome
Current smoker	F1730	Smoking withdrawal syndrome, uncomplicated
Current smoker	F1731	Smoking withdrawal syndrome, with seizures
Current smoker	F174	Mental and behavioural disorders related to tobacco use: withdrawal syndrome with delirium
Current smoker	F1740	Smoking withdrawal syndrome with delirium, without convulsion
Current smoker	F1741	Smoking withdrawal syndrome with delirium, with convulsions
Current smoker	F175	Mental and behavioural disorders related to tobacco use: psychotic disorder
Current smoker	F1750	Psychotic disorder with schizophrenic features, due to tobacco use
Current smoker	F1751	Psychotic disorder with delusions in the foreground, due to tobacco
Current smoker	F1752	Psychotic disorder with prominent hallucinations due to tobacco
Current smoker	F1753	Psychotic disorder with prominent polymorphic symptoms, due to smoking
Current smoker	F1754	Psychotic disorder with prominent depressive symptoms due to smoking
Current smoker	F1755	Psychotic disorder with manic symptoms in the foreground, due to smoking
Current smoker	F1756	Mixed psychotic disorder, due to smoking
Current smoker	F176	Mental and behavioural disorders related to tobacco use: amnesic syndrome
Current smoker	F177	Mental and behavioural disorders related to tobacco use: late-onset residual or psychotic disorder
Current smoker	F1770	Flashbacks, due to smoking
Current smoker	F1771	Residual or late-onset personality or behavioral disorder due to tobacco
Current smoker	F1772	Residual or late-onset psychotic disorder due to tobacco
Current smoker	F1773	Dementia, due to smoking
Current smoker	F1774	Other persistent or late-onset cognitive impairment due to tobacco
Current smoker	F1775	Late-onset psychotic disorder, due to tobacco
Current smoker	F178	Other mental and behavioral disorders related to tobacco use

Current smoker	F179	Unspecified mental and behavioral disorders related to tobacco use
Current smoker	T652	Toxic effect of tobacco and nicotine
Current smoker	Z587	Exposure to tobacco smoke
Current smoker	Z720	Difficulties related to tobacco use (without abuse)
Dyslipidemia	E78	Disorders of lipoprotein metabolism and other lipidemias
Dyslipidemia	E780	Pure hypercholesterolemia
Dyslipidemia	E781	Pure hyperglyceridemia
Dyslipidemia	E782	Mixed hyperlipidemia
Dyslipidemia	E783	Hyperchylomicronemia
Dyslipidemia	E784	Other hyperlipidemia
Dyslipidemia	E785	Hyperlipidemia, unspecified
Dyslipidemia	E786	Lipoprotein deficiency
Dyslipidemia	E788	Other disorders of lipoprotein metabolism
Dyslipidemia	E789	Disorder of lipoprotein metabolism, unspecified
Diabetes mellitus	E10	Type 1 diabetes mellitus
Diabetes mellitus	E101	Type 1 diabetes mellitus with ketoacidosis
Diabetes mellitus	E102	Type 1 diabetes mellitus with kidney complications
Diabetes mellitus	E103	Type 1 diabetes mellitus with ophthalmic complications
Diabetes mellitus	E104	Type 1 diabetes mellitus with neurological complications
Diabetes mellitus	E105	Type 1 diabetes mellitus with circulatory complications
Diabetes mellitus	E106	Type 1 diabetes mellitus with other specified complications
Diabetes mellitus	E108	Type 1 diabetes mellitus with unspecified complications
Diabetes mellitus	E109	Type 1 diabetes mellitus without complications
Diabetes mellitus	E11	Type 2 diabetes mellitus
Diabetes mellitus	E110	Type 2 diabetes mellitus with hyperosmolarity
Diabetes mellitus	E1100	Type 2 diabetes mellitus with hyperosmolarity without nonketotic hyperglycemic-hyperosmolar coma (NKHHC)
Diabetes mellitus	E112	Type 2 diabetes mellitus with kidney complications
Diabetes mellitus	E113	Type 2 diabetes mellitus with ophthalmic complications
Diabetes mellitus	E114	Type 2 diabetes mellitus with neurological complications
Diabetes mellitus	E1140	Type 2 diabetes mellitus with diabetic neuropathy, unspecified
Diabetes mellitus	E115	Type 2 diabetes mellitus with circulatory complications
Diabetes mellitus	E116	Type 2 diabetes mellitus with other specified complications
Diabetes mellitus	E118	Type 2 diabetes mellitus with unspecified complications
Diabetes mellitus	E119	Type 2 diabetes mellitus without complications
Diabetes mellitus	E13	Other specified diabetes mellitus
Diabetes mellitus	E130	Other specified diabetes mellitus with hyperosmolarity
Diabetes mellitus	E131	Other specified diabetes mellitus with ketoacidosis
Diabetes mellitus	E132	Other specified diabetes mellitus with kidney complications
Diabetes mellitus	E133	Other specified diabetes mellitus with ophthalmic complications
Diabetes mellitus	E134	Other specified diabetes mellitus with neurological complications
Diabetes mellitus	E135	Other specified diabetes mellitus with circulatory complications
Diabetes mellitus	E136	Other specified diabetes mellitus with other specified complications
Diabetes mellitus	E138	Other specified diabetes mellitus with unspecified complications
Diabetes mellitus	E139	Other specified diabetes mellitus without complications

eMethods 2. List of CCAM (French Common Classification of Medical Procedures) Used for Outcomes Definitions

Outcome	CCAM code	Label	
Major amputation	NZFA002	Transtibial amputation	
	NZFA005	Amputation or disarticulation of the midfoot or forefoot, without stabilization of the hindfoot	
	NZFA007	Transfemoral amputation	
	NZFA013	Amputation or disarticulation of the midfoot or forefoot, with stabilization of the hindfoot	
Peripheral endovascular revascularization	DGPF001	Percutaneous arterial desobstruction of the aortic bifurcation	
	DGPF002	Recanalization of the aortic bifurcation with stenting by bilateral percutaneous arterial approach	
	EDPF006	Recanalization of the common iliac artery and/or external iliac artery with covered stenting, by percutaneous arterial approach	
	EDPF008	Recanalization of the common iliac artery and/or external iliac artery without stenting, by percutaneous arterial approach	
	EDPF009	Recanalization of the common iliac artery and/or the external iliac artery with stenting, by percutaneous arterial approach	
	EEAF001	Intraluminal dilatation of several arteries of the lower limb without stenting, by percutaneous arterial approach	
	EEAF002	Intraluminal dilatation of a lower limb artery with intraluminal dilatation of the common iliac artery and/or the homolateral external iliac artery with stenting, by percutaneous arterial approach	
	EEAF003	Intraluminal dilatation of a lower limb artery without stenting, by percutaneous arterial approach	
	EEAF004	Intraluminal dilatation of a lower limb artery with percutaneous arterial stenting	
	EEAF005	Intraluminal dilatation of a lower limb artery with intraluminal dilatation of the common iliac artery and/or the homolateral external iliac artery without stenting, by percutaneous arterial approach	
	EEAF006	Intraluminal dilatation of several arteries of the lower limb with stenting, by percutaneous arterial approach	
	EEJF001	Percutaneous arterial thromboaspiration of the artery or bypass of the lower limb	
	EENF001	Superselective in situ fibrinolysis of an artery or arterial bypass of the lower limb, by percutaneous arterial approach	
	EENF002	Selective or superselective in situ fibrinolysis of an artery or an arterial bypass of the lower limb, by percutaneous arterial approach	
	EEPF001	Recanalization of a lower limb artery with percutaneous arterial stenting	
	EEPF002	Recanalization of a lower limb artery without stenting, by percutaneous arterial approach	
	ENAF001	Intraluminal dilatation of a non-anatomic limb artery bypass graft with percutaneous arterial stenting	
	ENAF002	Intraluminal dilatation of a non-anatomic limb artery bypass graft without stenting by percutaneous arterial approach	
	Peripheral surgical revascularization	DGFA001	Thromboendarterectomy of the trunk of the abdominal aorta, by laparotomy
		DGFA003	Aortobiiliac thromboendarterectomy by laparotomy
DGFA004		Thrombectomy of the abdominal aorta, common iliac artery and/or external iliac artery through bilateral inguino-femoral approach	
DGFA005		Thrombectomy of a bypass or thromboendarterectomy of the abdominal aorta or its branches by laparotomy	
DGFA007		Unilateral aorto-ilio-femoral thromboendarterectomy by laparotomy	
DGFA008		Bilateral aorto-ilio-femoral thromboendarterectomy, by laparotomy	
DGFA009		Unilateral aorto-iliac thromboendarterectomy, by laparotomy	
DGFA010		Thrombectomy of the abdominal aorta, common iliac artery and/or external iliac artery by laparotomy	

DGFA012	Thrombectomy of a bypass or thromboendarterectomy of the abdominal aorta or its branches through a inguino-femoral approach
EDFA003	Ilio-femoral thromboendarterectomy, by laparotomy
EDFA006	Iliac thromboendarterectomy, by laparotomy
EDFA007	Iliofemoral thromboendarterectomy, by direct inguino-femoral approach
DGCA004	Bifurcated aortobifemoral bypass, by laparotomy with infrarenal clamping
DGCA007	Infrarenal aortaortic bypass by laparotomy, with infrarenal clamping
DGCA009	Unilateral aortofemoral bypass, by laparotomy with infrarenal clamping
DGCA010	Bifurcated aortobifemoral bypass surgery with suprarenal clamping
DGCA012	Infrarenal aortaortic bypass by laparotomy, with suprarenal clamping
DGCA019	Unilateral aortofemoral bypass, by laparotomy with suprarenal clamping
DGCA020	Aorto-ilio-femoral bifurcated bypass surgery with suprarenal clamping
DGCA021	Aortobirenal bypass surgery, by laparotomy
DGCA022	Bifurcated aortobisilic bypass, by laparotomy with infrarenal clamping
DGCA026	Bifurcated aortobisilic bypass, by laparotomy with suprarenal clamping
DGCA029	Aorto-ilio-femoral bifurcated bypass surgery with infrarenal clamping
DGCA030	Iterative bifurcated aortobifemoral bypass [redux] without prosthesis removal, by laparotomy
EDCA003	Ilio-iliac, iliofemoral or femorofemoral artery bypass grafting using a direct approach
EEFA001	Thromboendarterectomy of the femoral artery and/or its branches, by direct approach
EEFA002	Thrombectomy of the lower limb artery, by popliteal approach
EEFA003	Thromboendarterectomy of the popliteal artery, by direct approach
EEFA004	Thrombectomy of the lower limb artery, by inguino-femoral approach
EDCA004	Ilio-femoral arterial bypass for anastomotic complication on femoral bifurcation prosthesis, by direct approach
EDCA005	Homolateral iliofemoral artery bypass surgery, direct approach
EECA001	Femoropopliteal artery bypass graft above the knee joint space using a direct approach
EECA002	Homolateral femorofemoral artery bypass surgery, direct approach
EECA003	Femoropopliteal artery bypass below the knee joint space, using a direct approach
EECA005	Bypass surgery of a foot artery, by direct approach
EECA006	Subclaviofemoral or axillobifemoral arterial bypass through direct approach
EECA007	Subclaviofemoral or axillofemoral arterial bypass through a direct approach
EECA008	Femorotibial or femoroperoneal arterial bypass surgery without a venous collar, using a direct approach
EECA010	Femorotibial or femoroperoneal arterial bypass with venous collar, by direct approach
EECA012	Multiple staged [sequential] or bifurcated bypass surgery of the lower limb arteries, using a direct approach
EEAA002	Enlargement angioplasty of a lower limb arterial bypass by direct approach