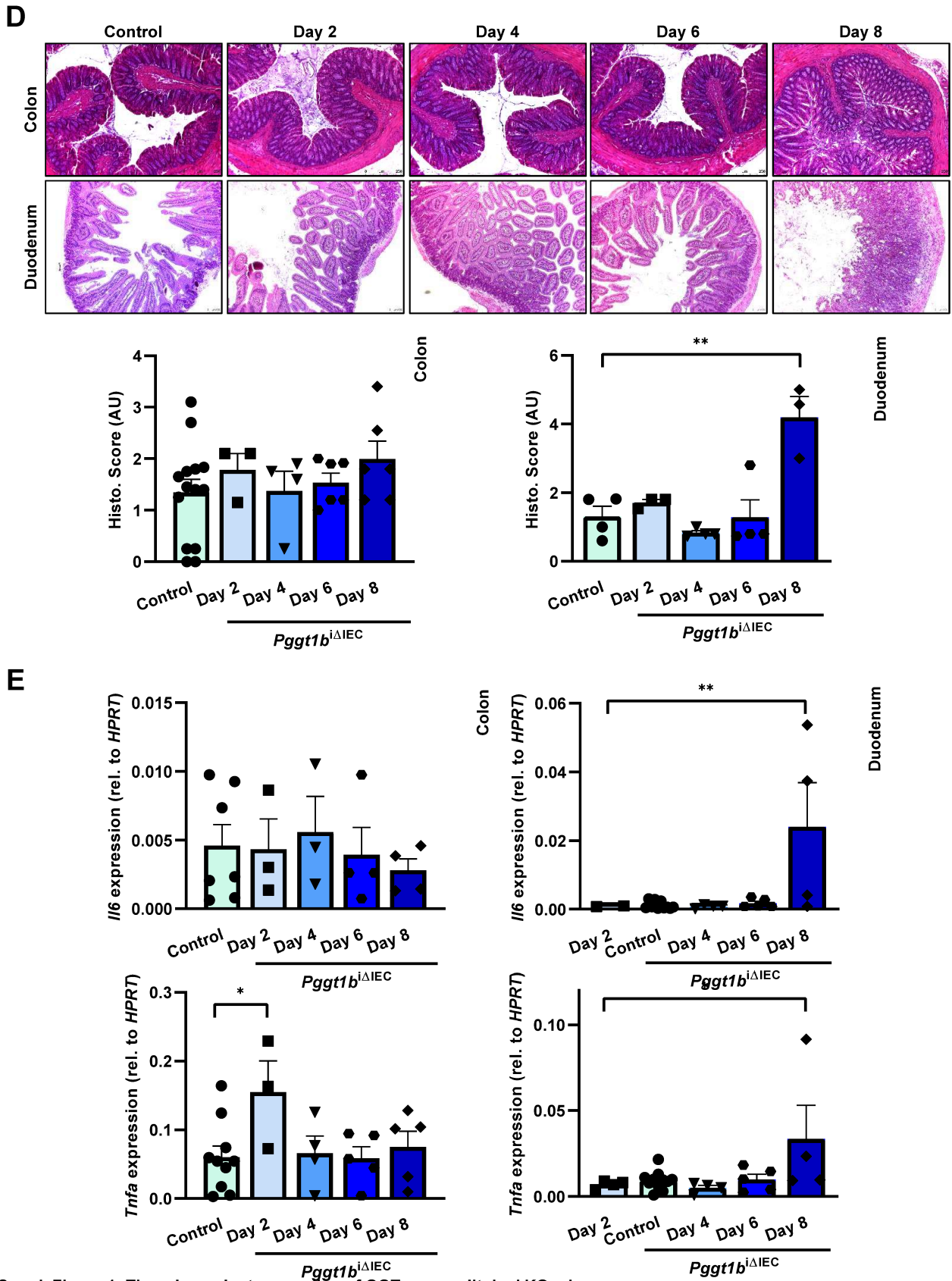
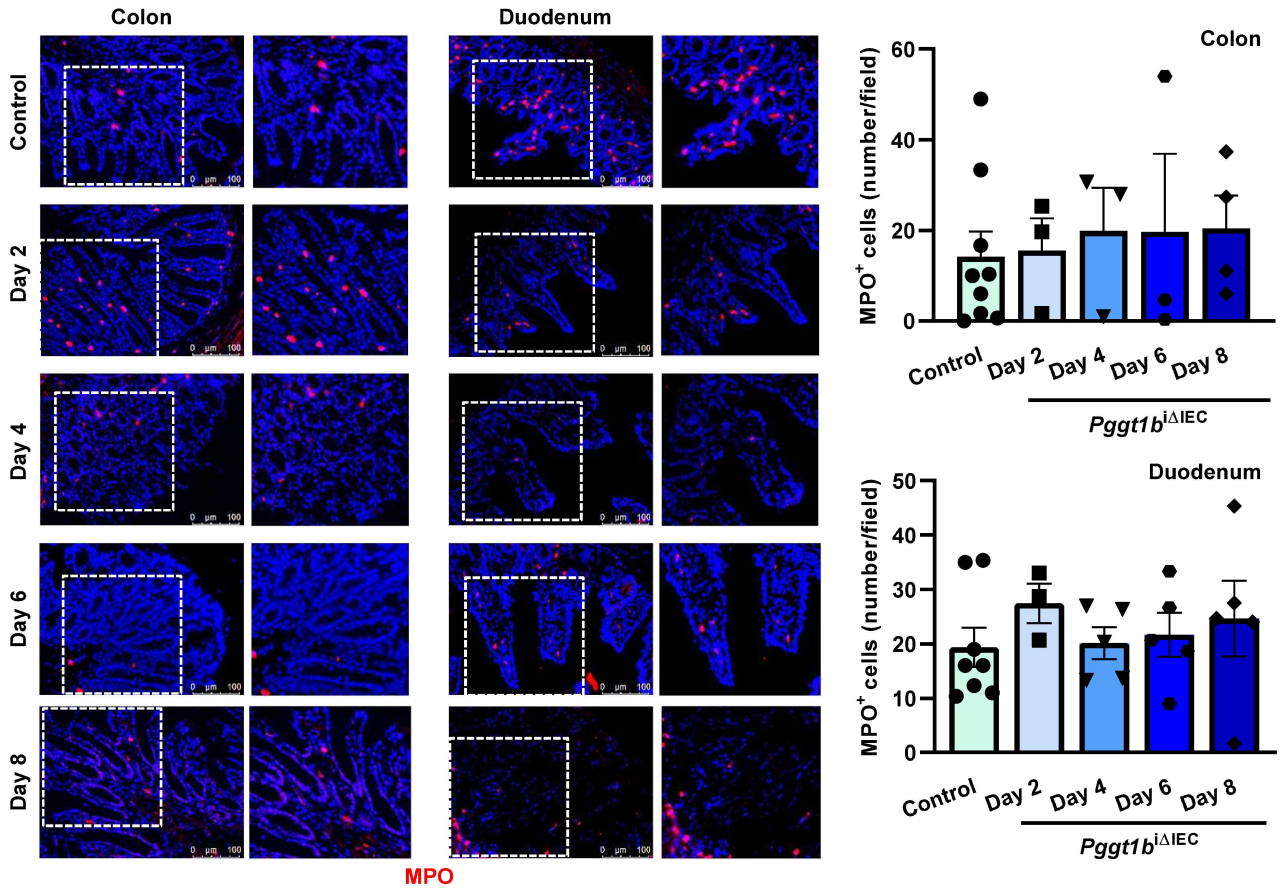


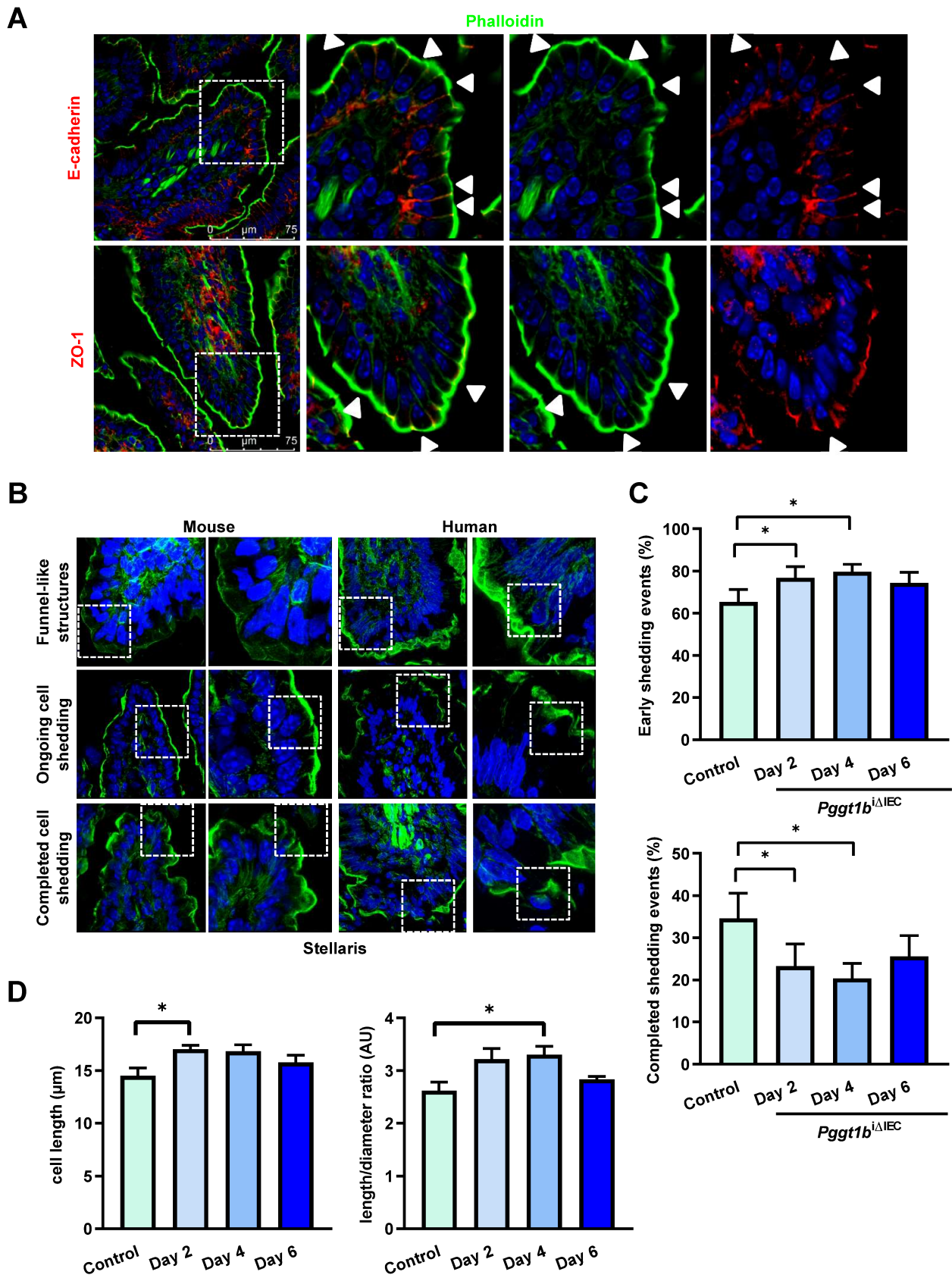
Suppl. Figure 1: Time-dependent generation of GGTase conditional KO mice



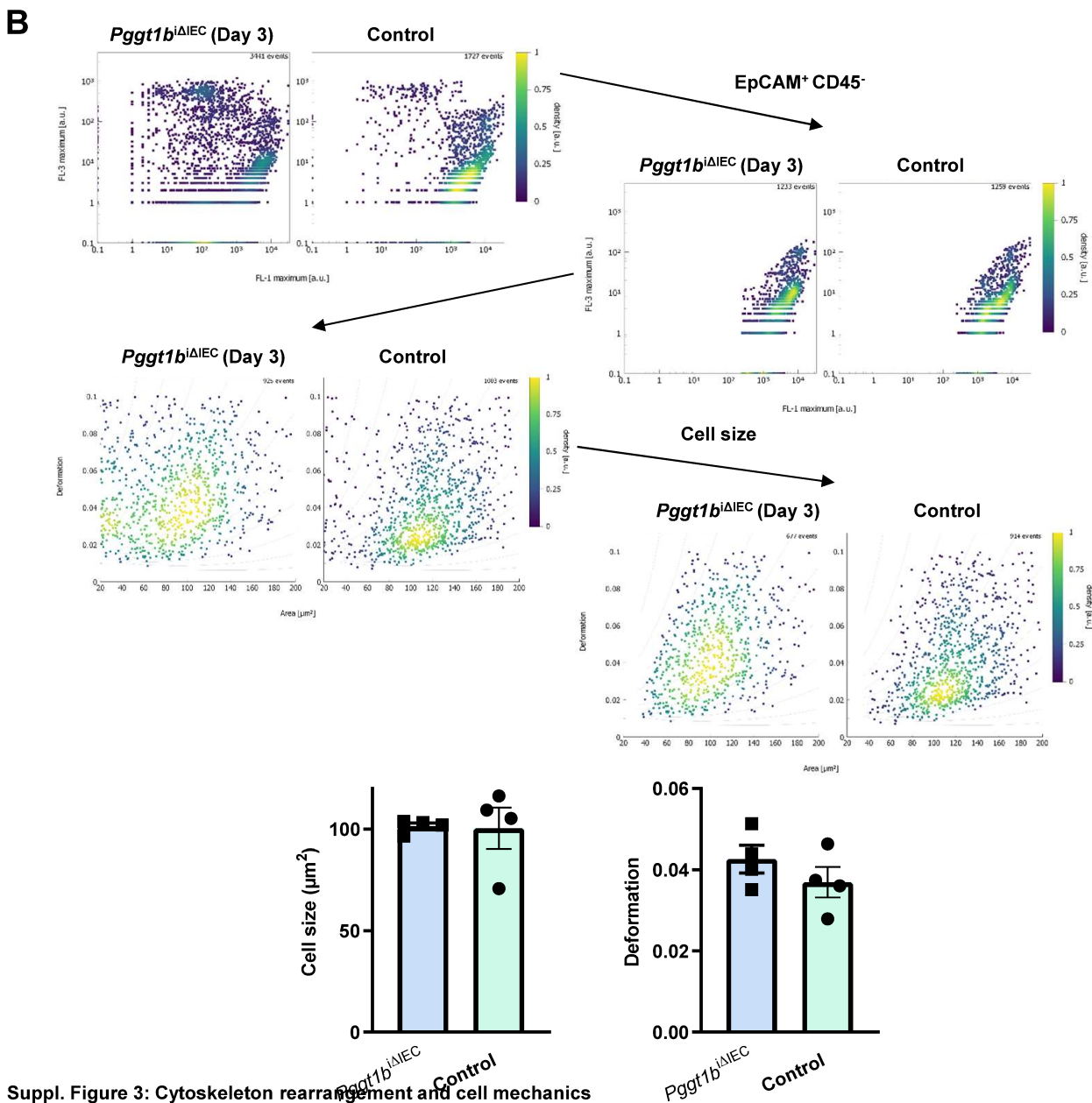
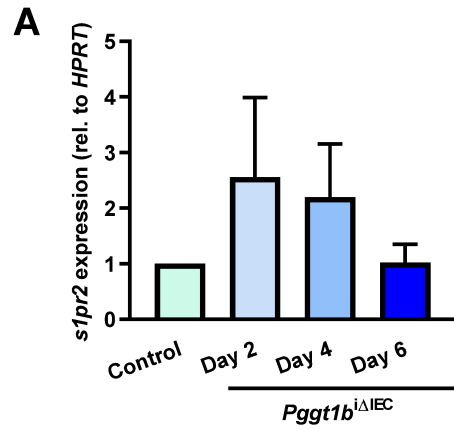
Suppl. Figure 1: Time-dependent generation of GGTase conditional KO mice

F

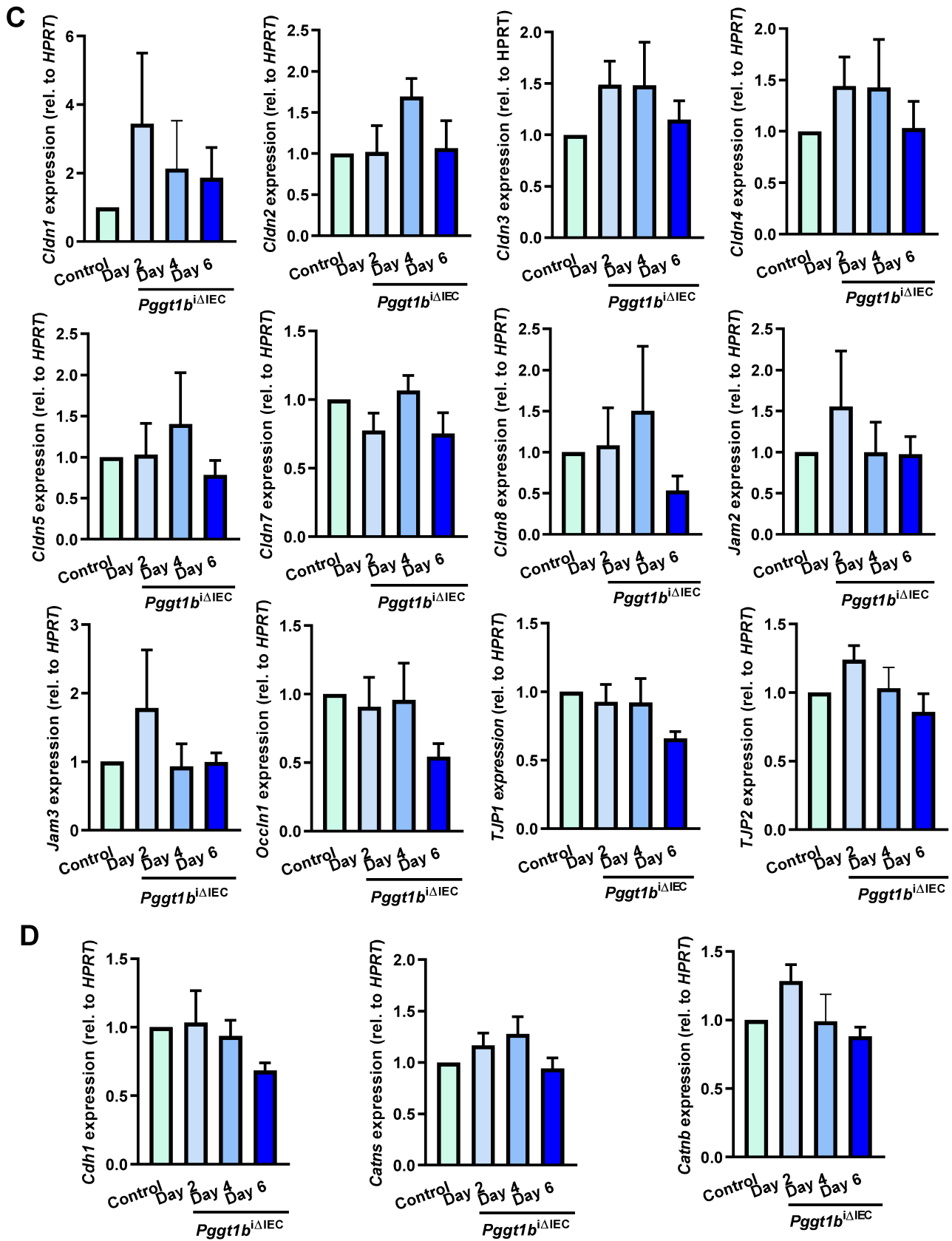


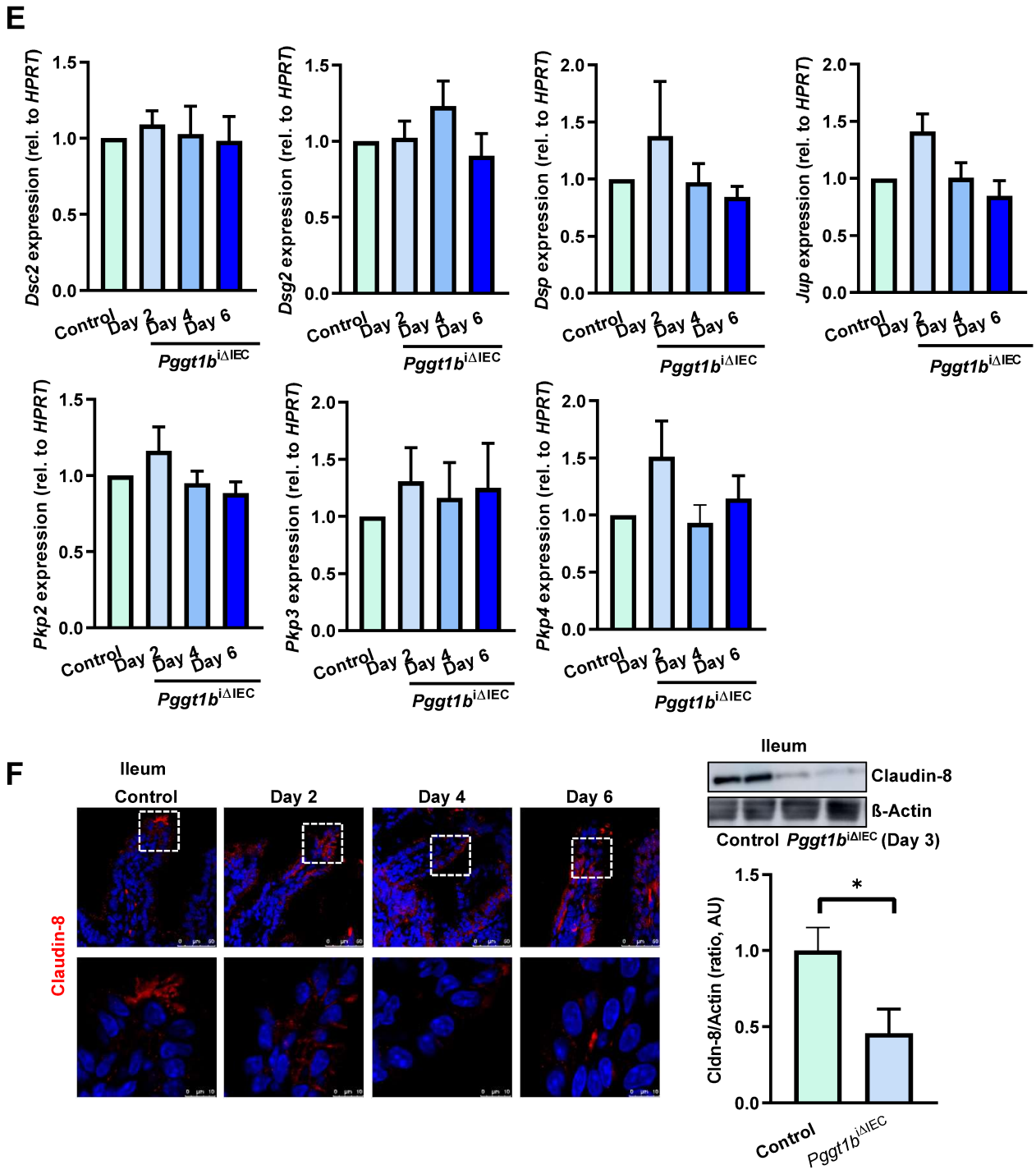


Suppl. Figure 2: Cell shedding alterations



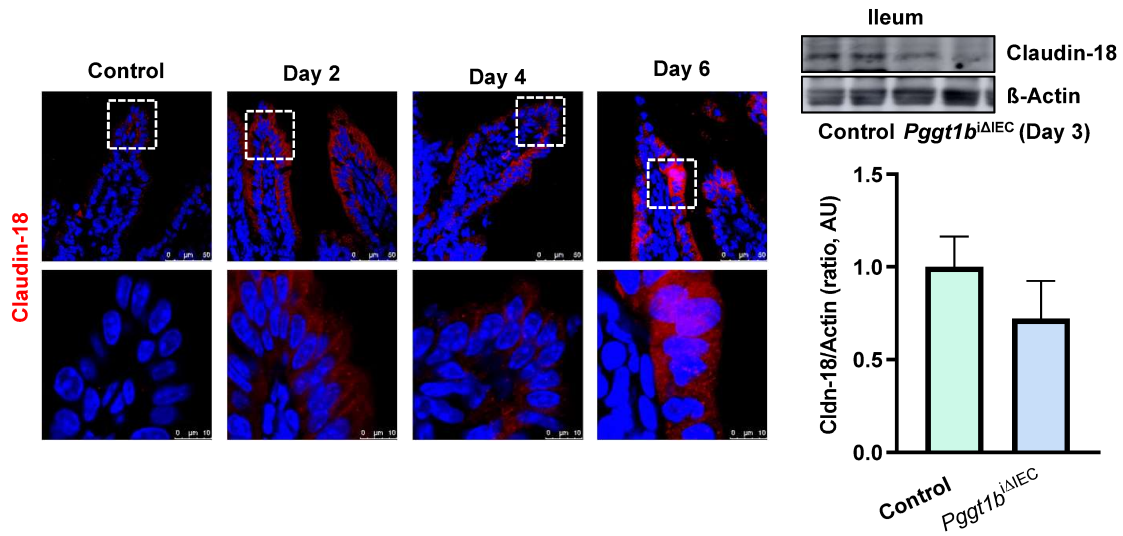
Suppl. Figure 3: Cytoskeleton rearrangement and cell mechanics



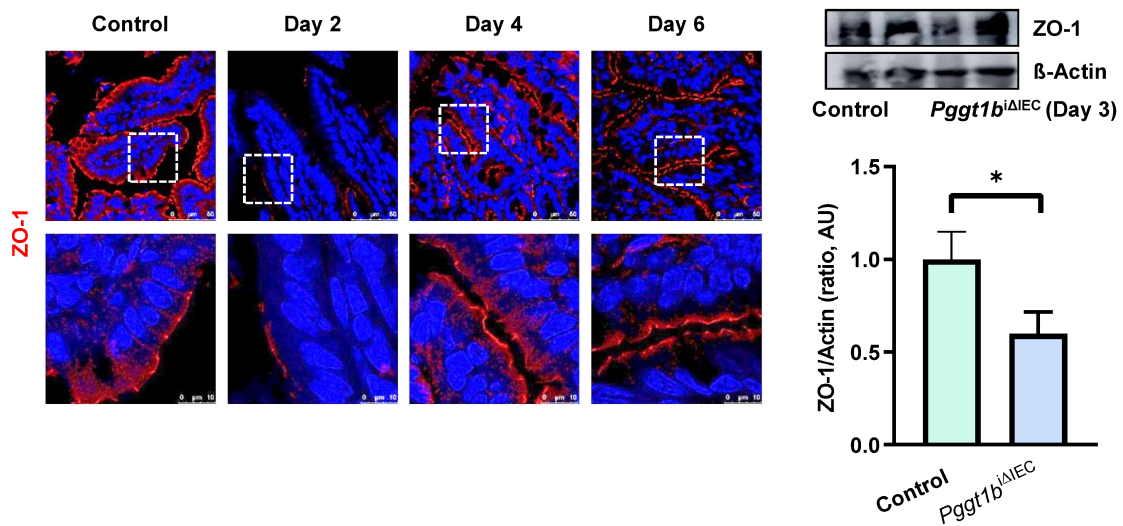


Suppl. Figure 3: Cytoskeleton rearrangement and cell mechanics

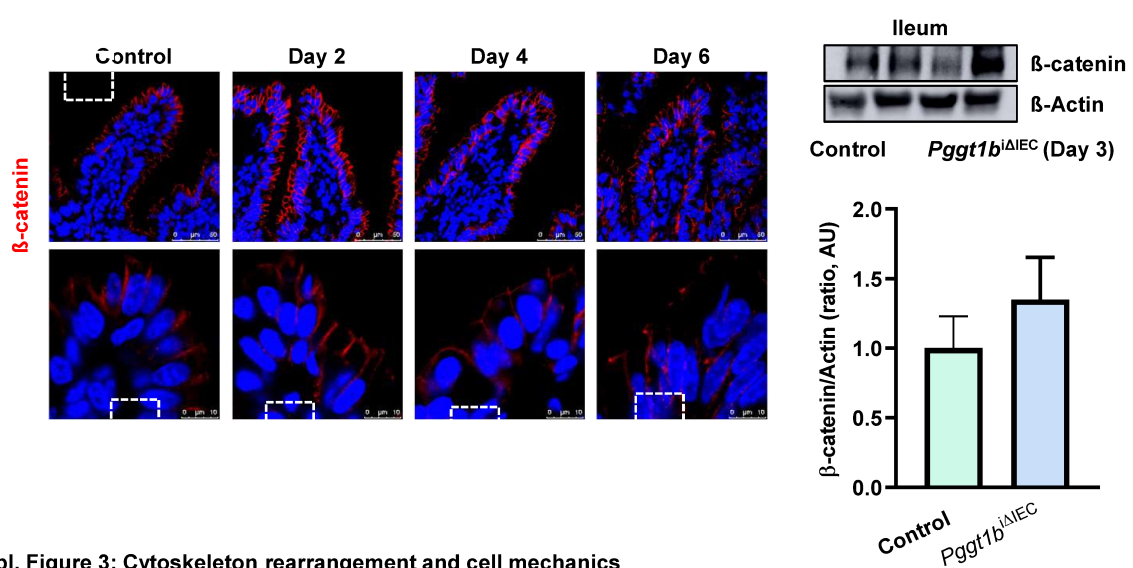
G



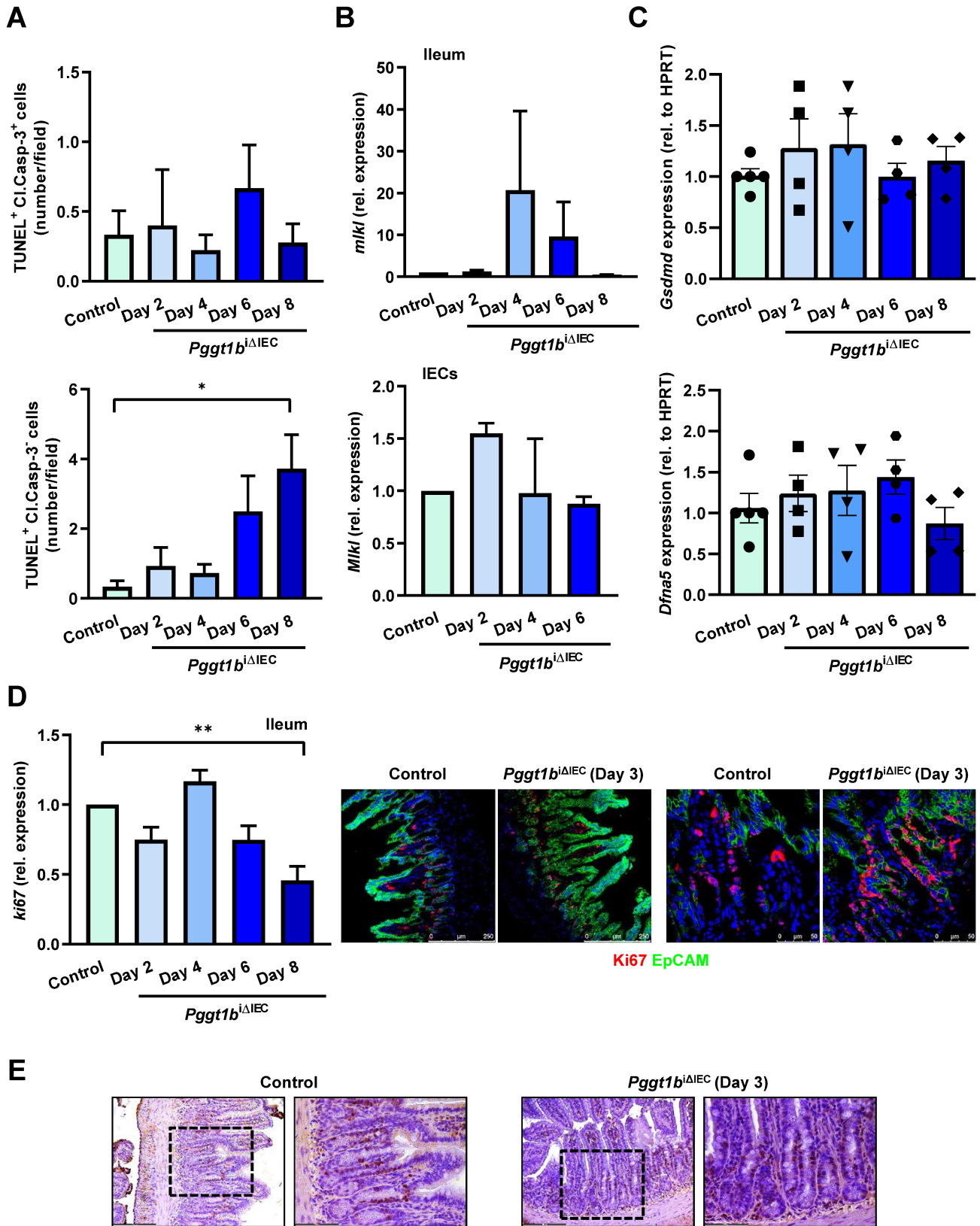
H



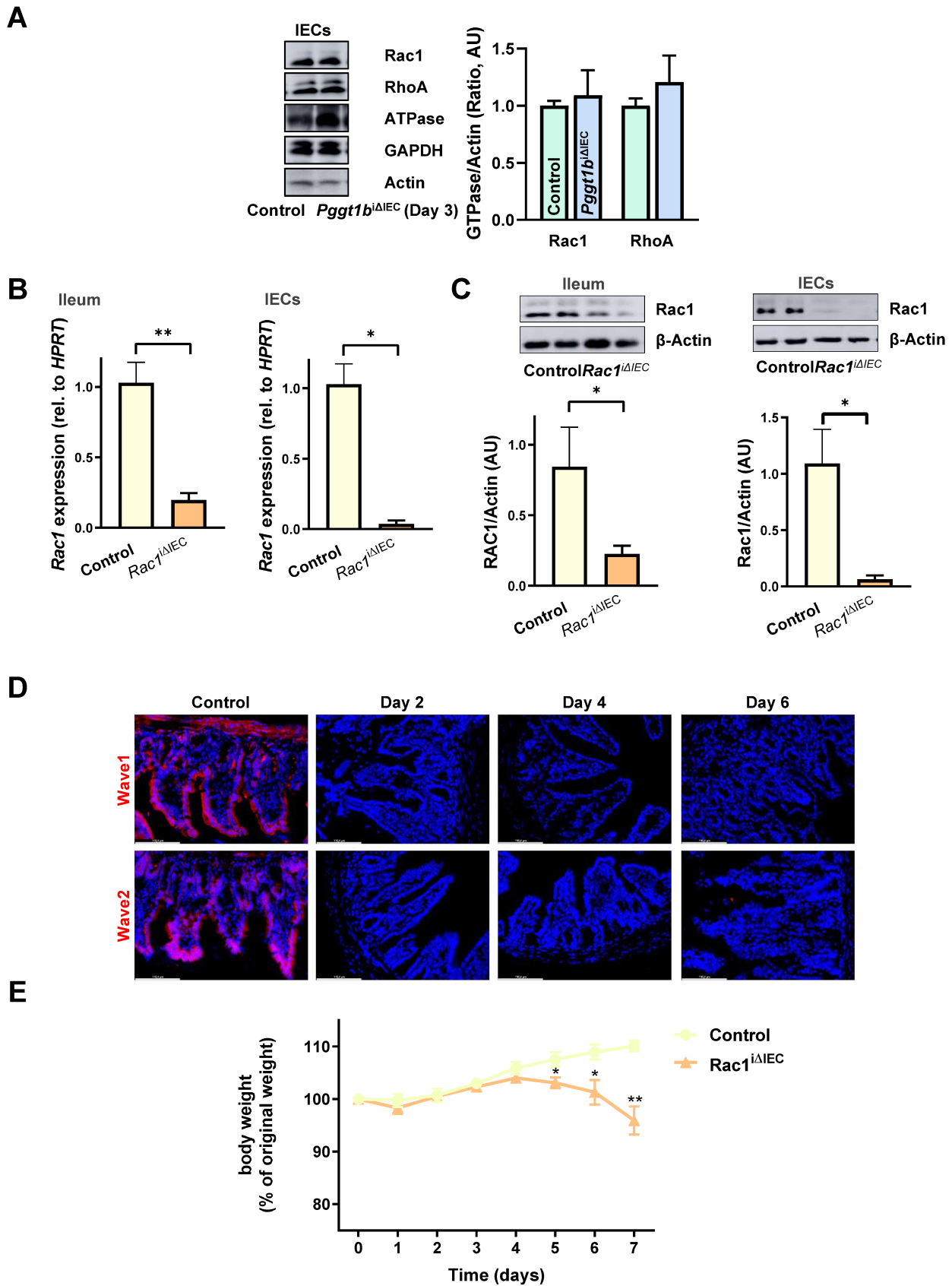
I



Suppl. Figure 3: Cytoskeleton rearrangement and cell mechanics

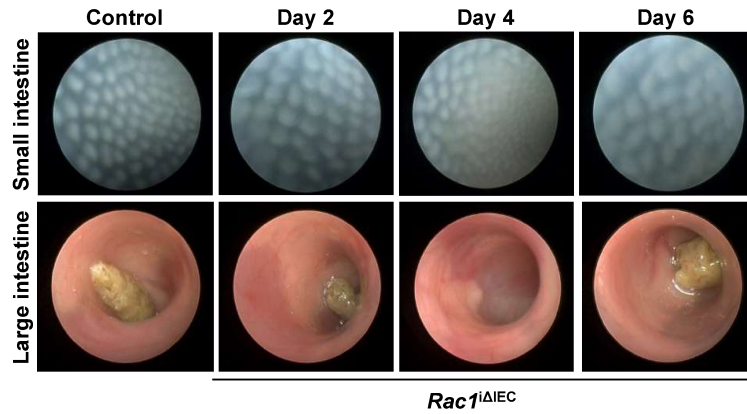


Suppl. Figure 4: Alternative molecular mechanisms in GGTase conditional KO mice

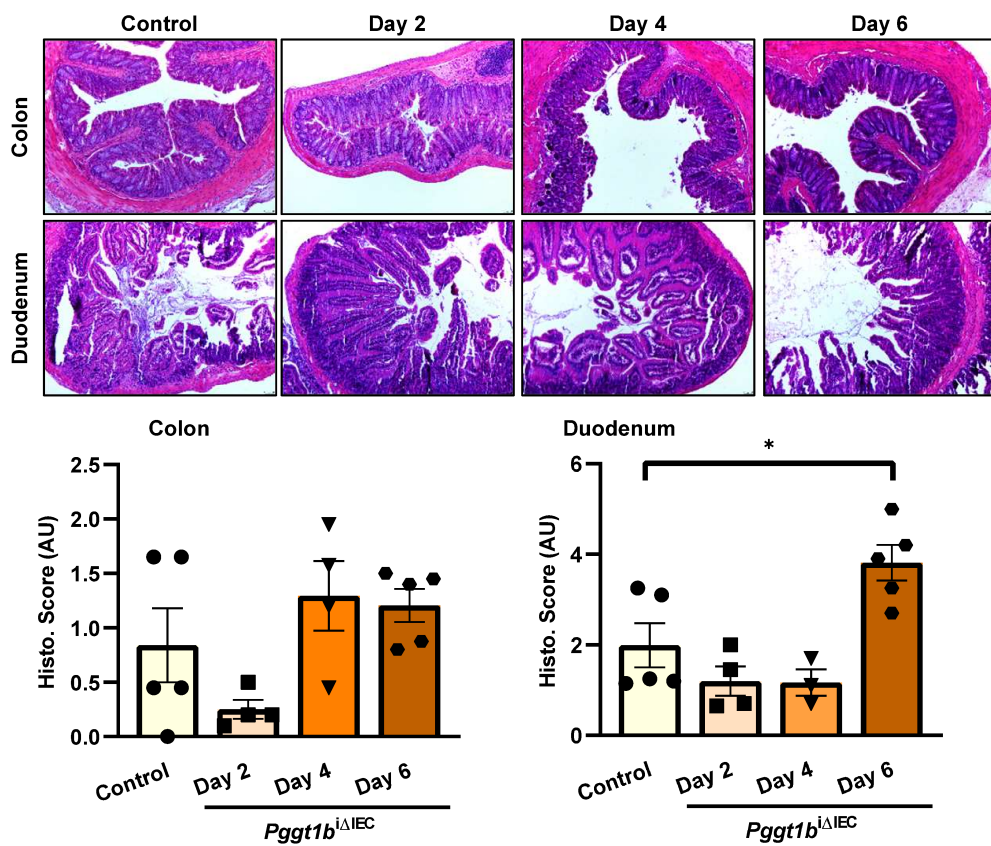


Suppl. Fig. 5: Rac1 conditional knock-out mice

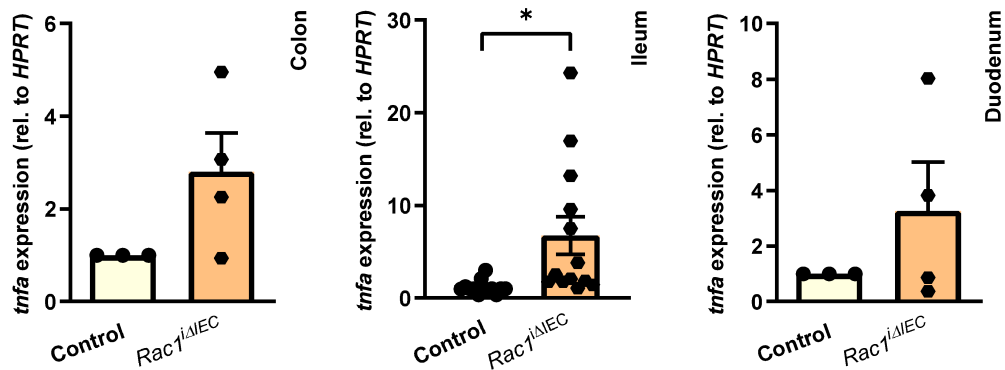
F

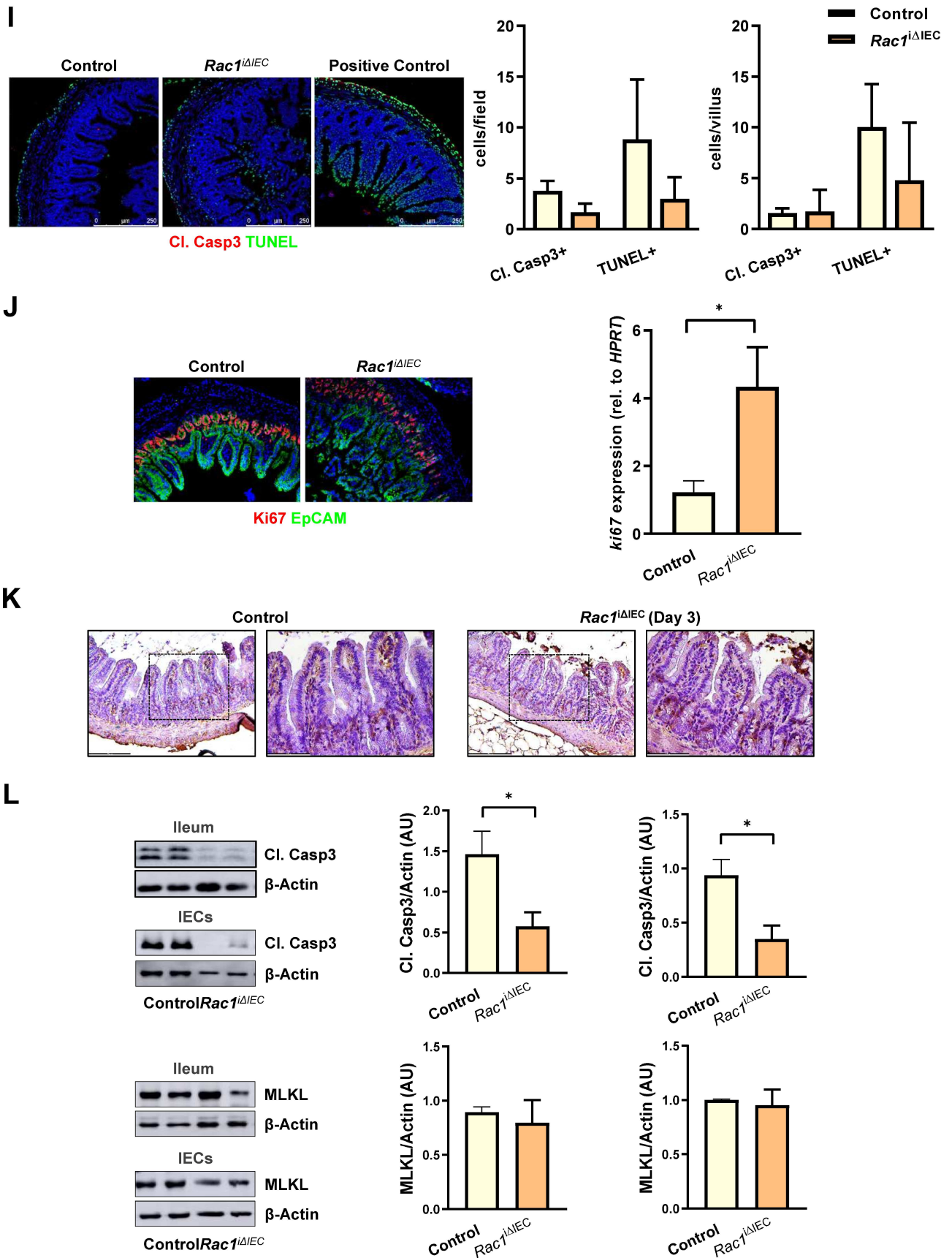


G

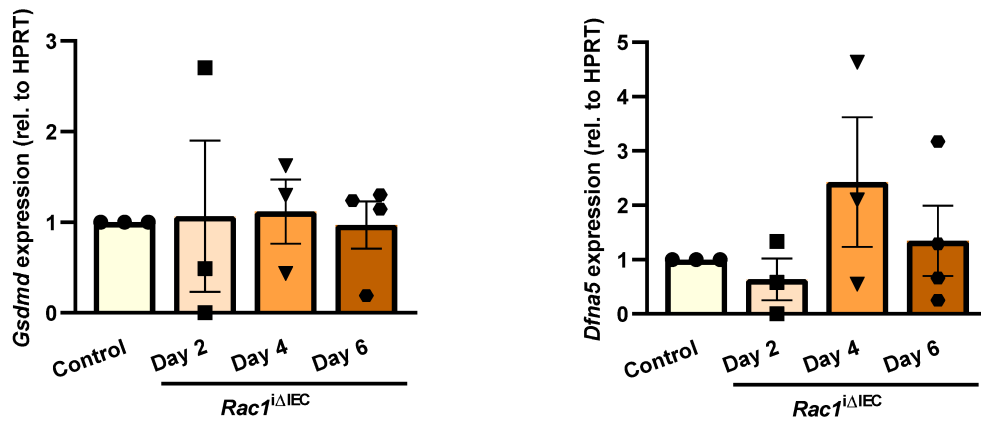


H

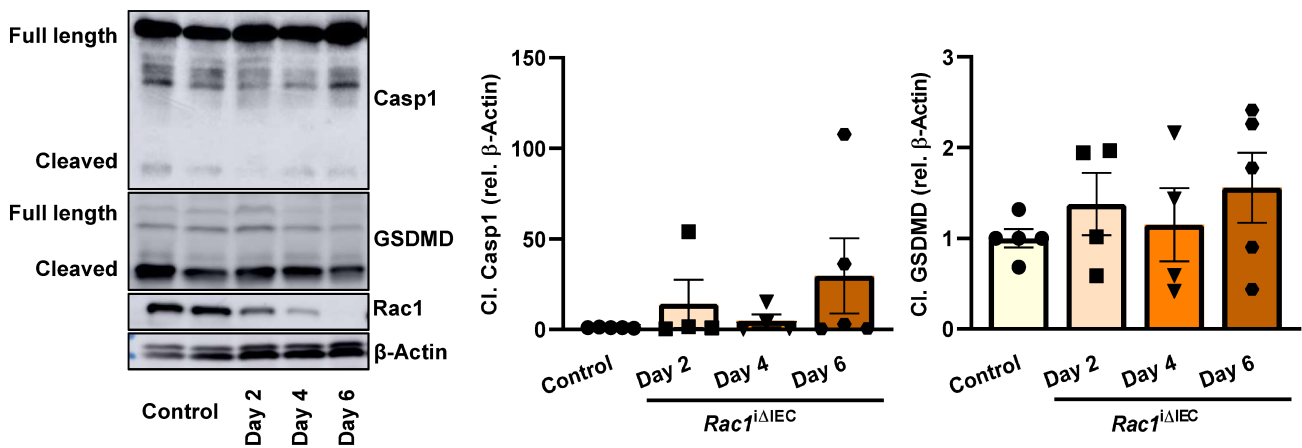
Suppl. Fig. 5: *Rac1* conditional knock-out mice



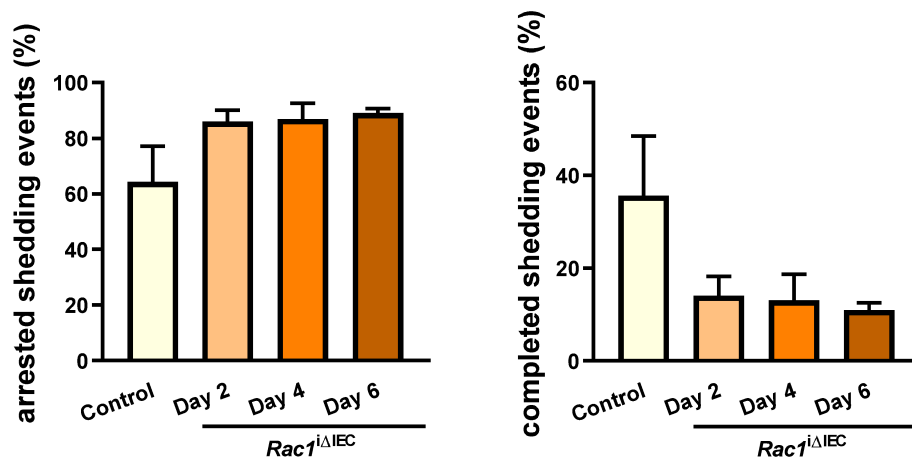
M

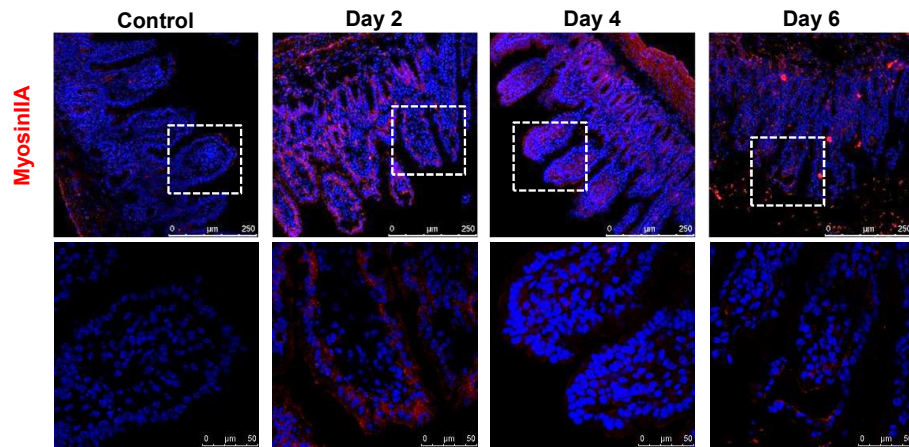
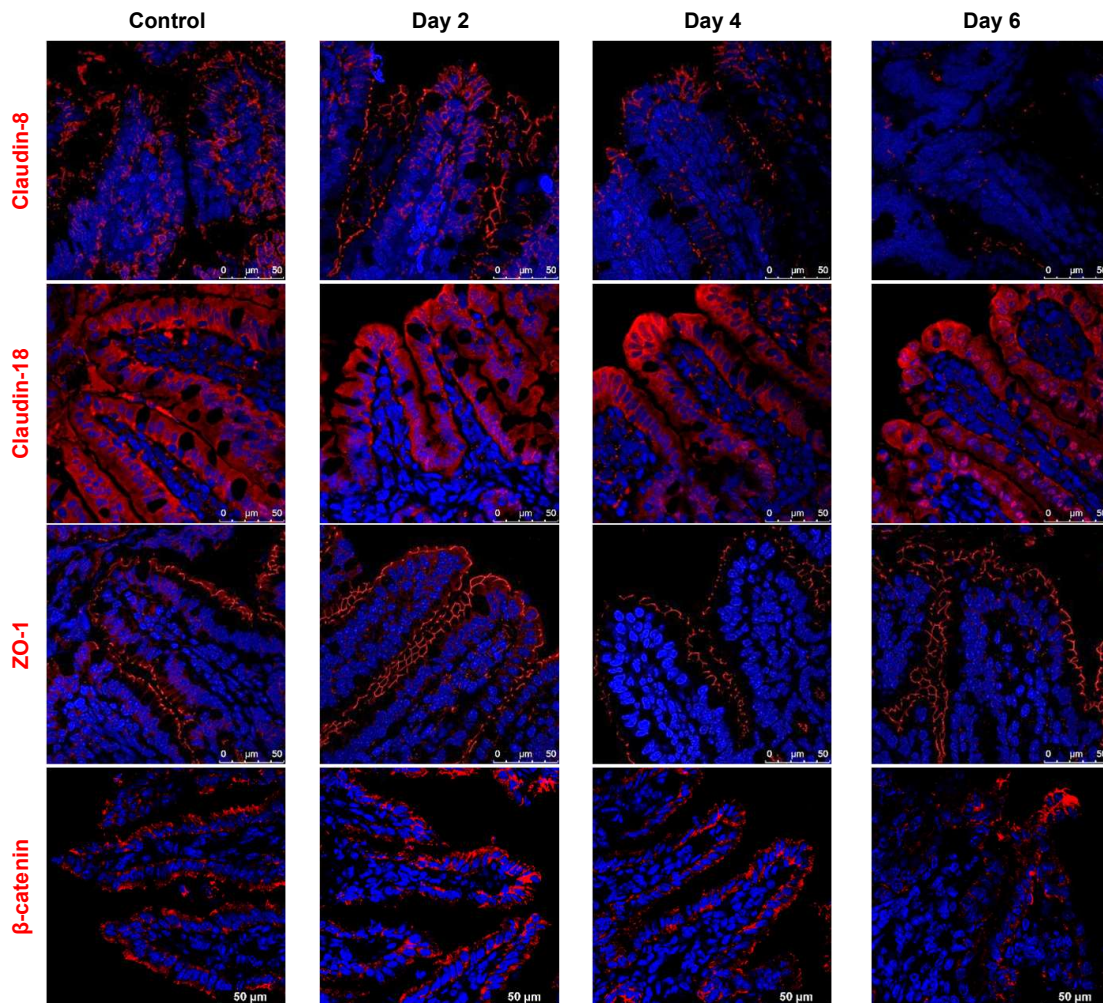


N

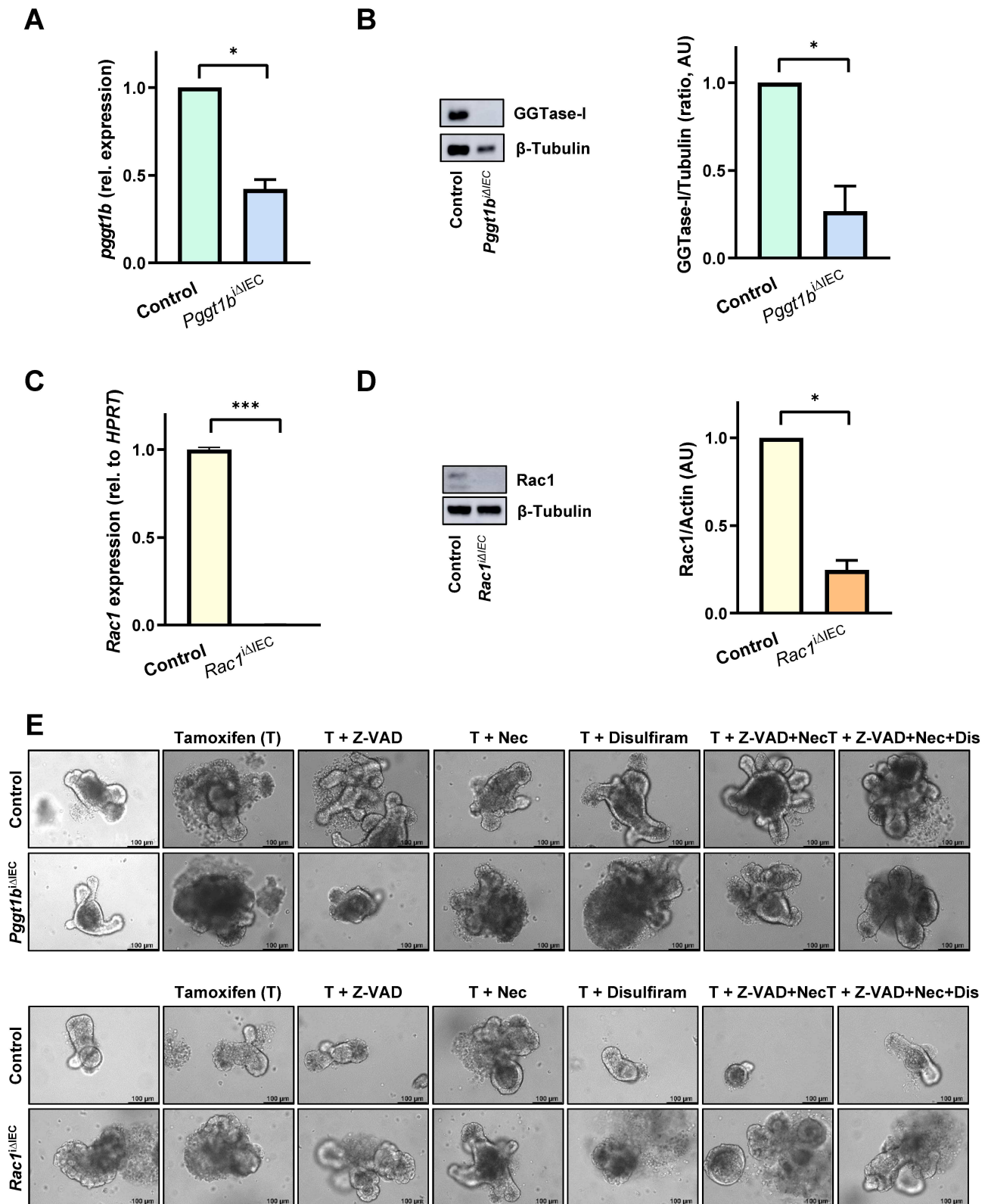


O

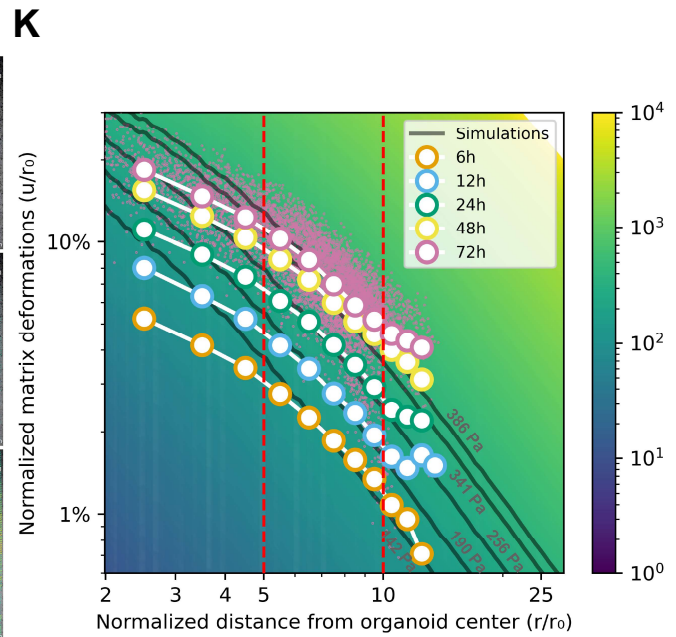
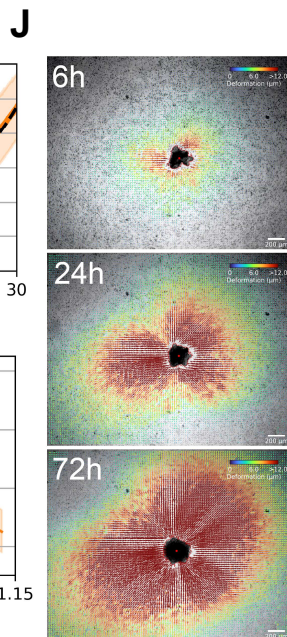
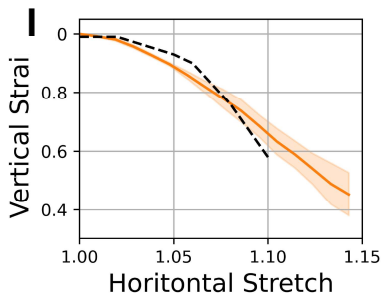
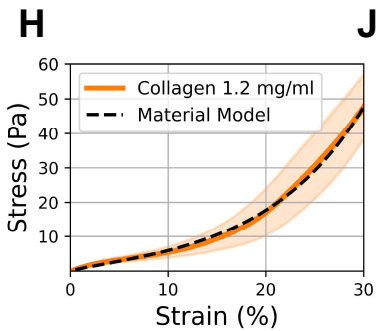
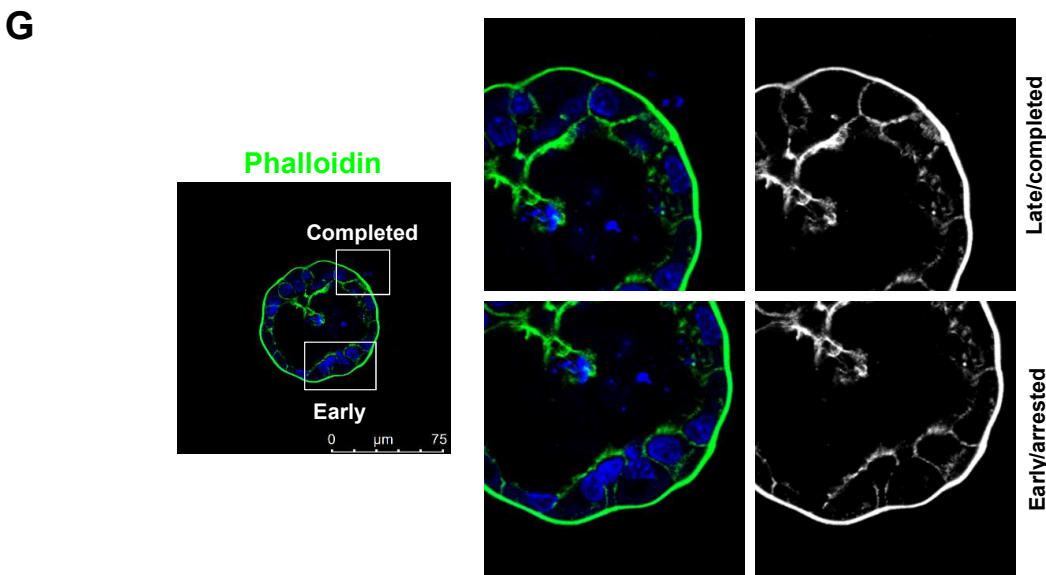
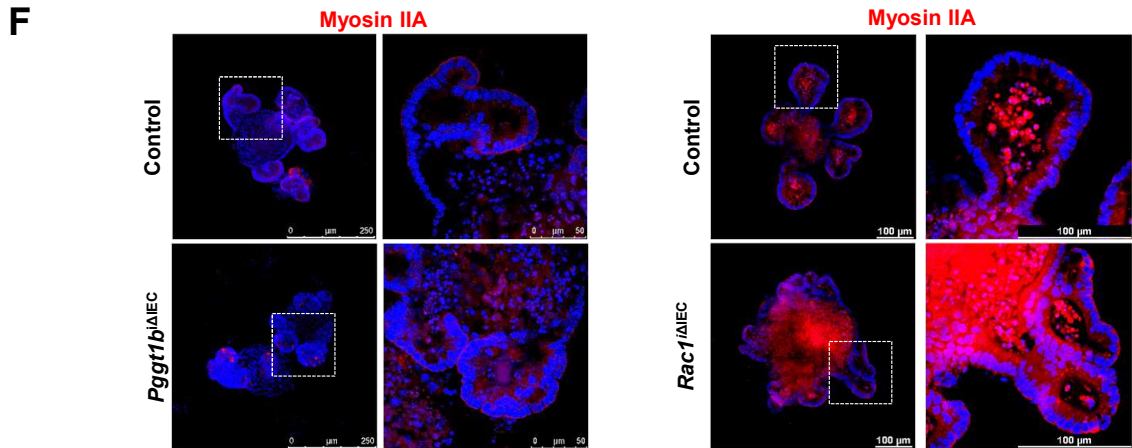
Suppl. Fig. 5: *Rac1* conditional knock-out mice

P**Q**

Suppl. Fig. 5: Rac1 conditional knock-out mice

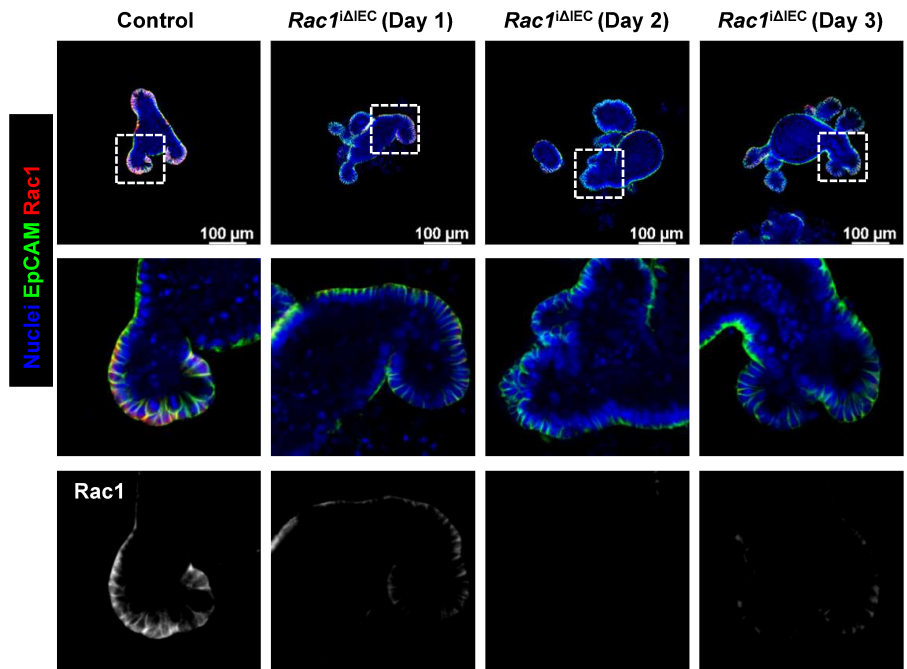


Suppl. Fig. 6: Organoids

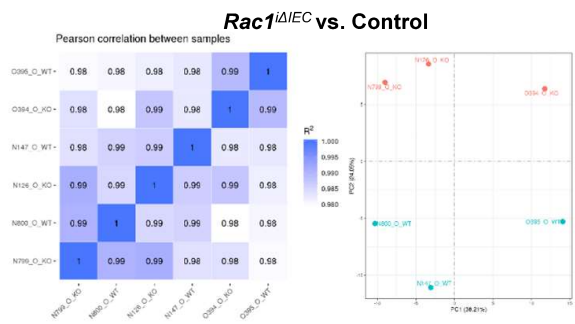


Suppl. Fig. 6: Organoids

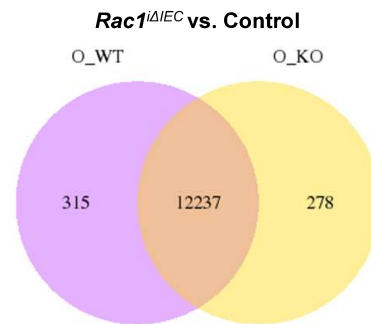
L



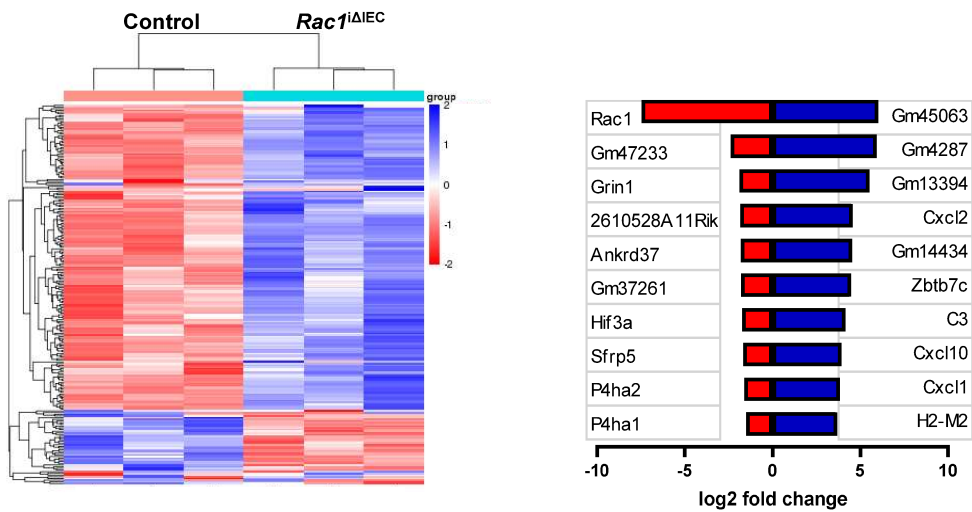
M



N

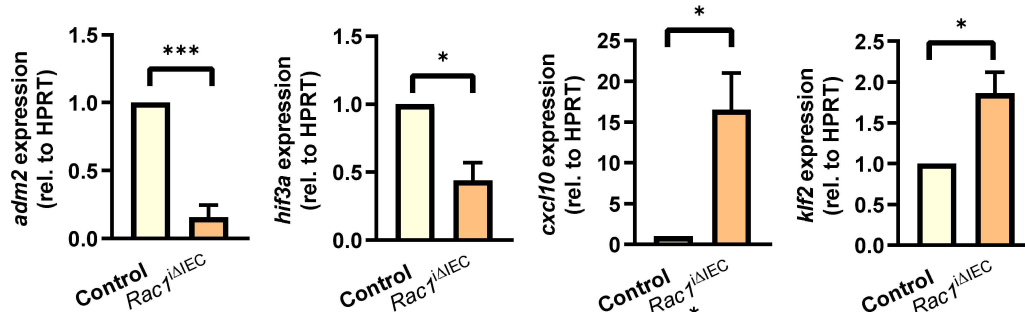


O

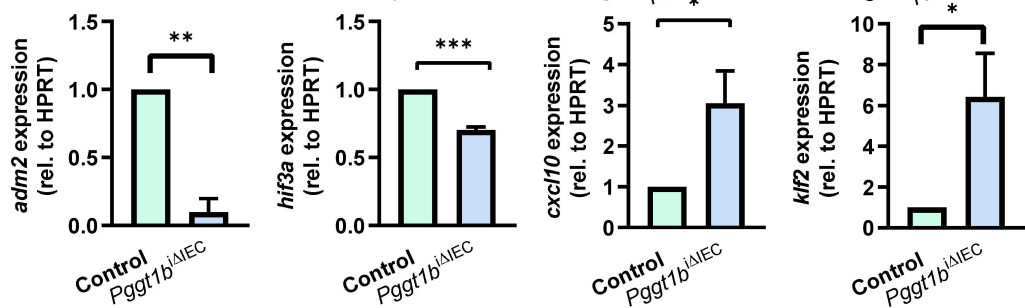


Suppl. Fig. 6: Organoids

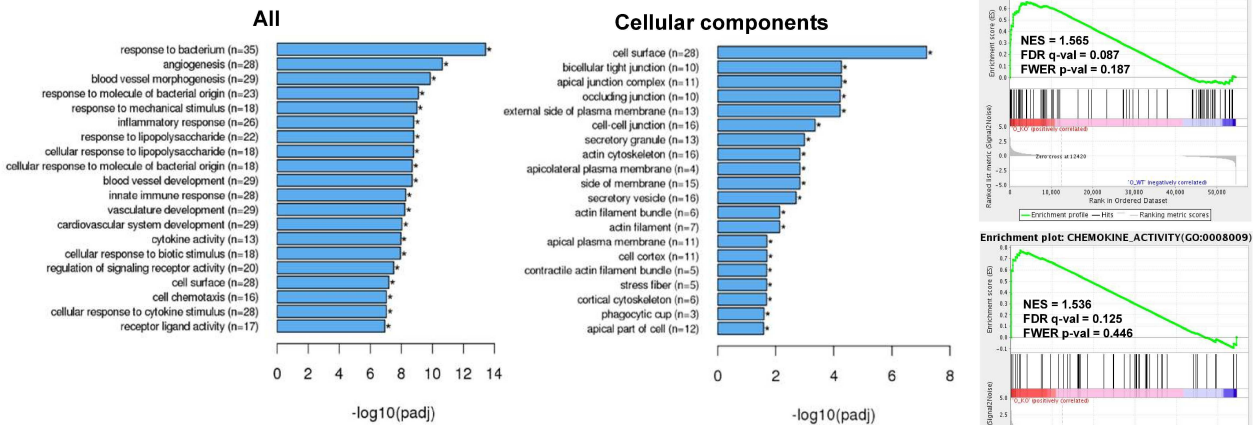
P



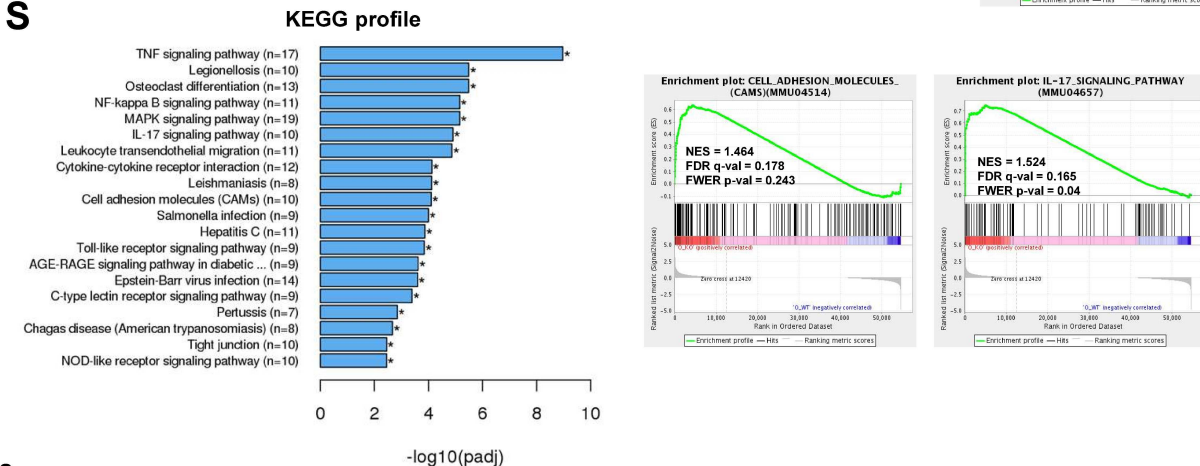
Q



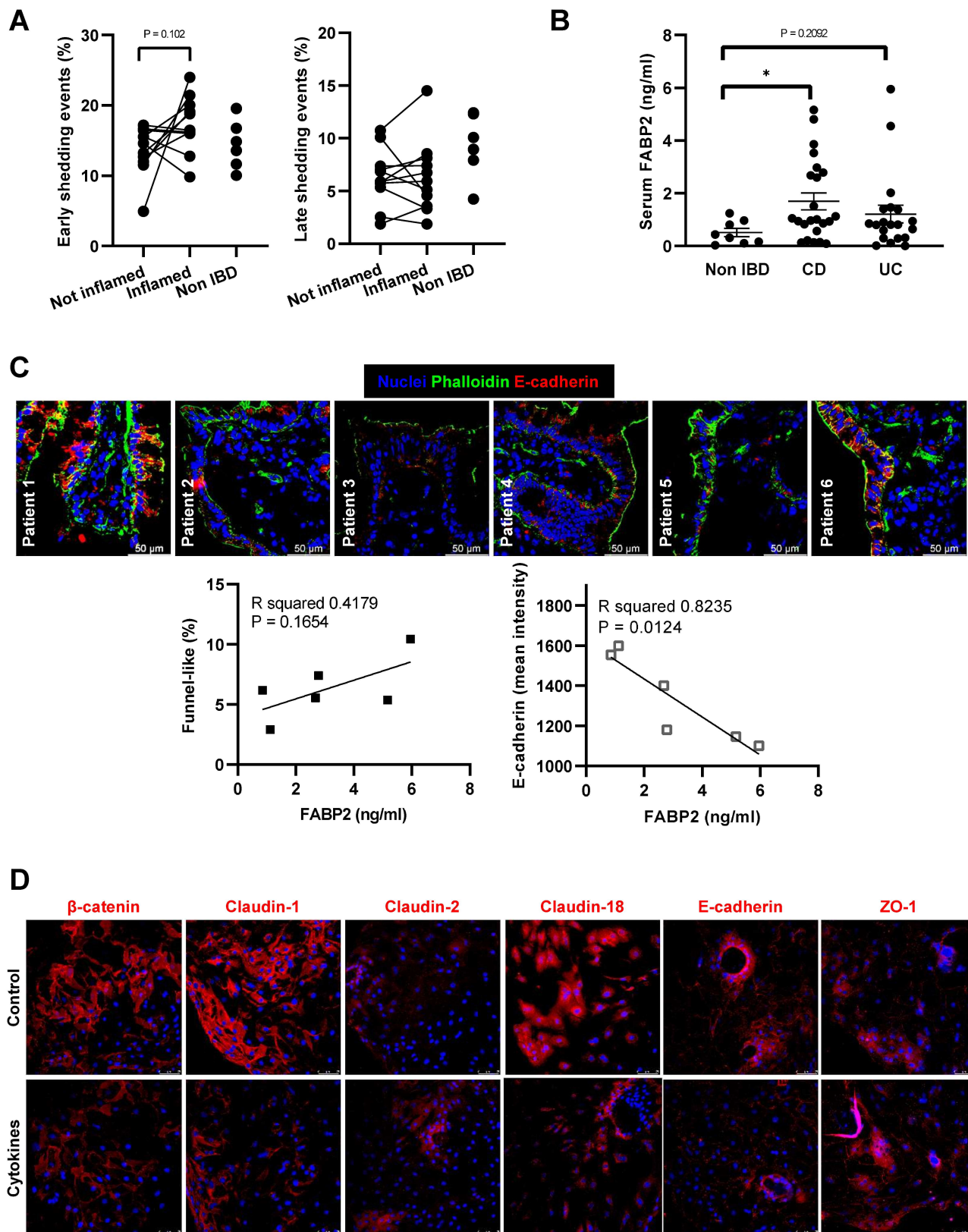
R



S

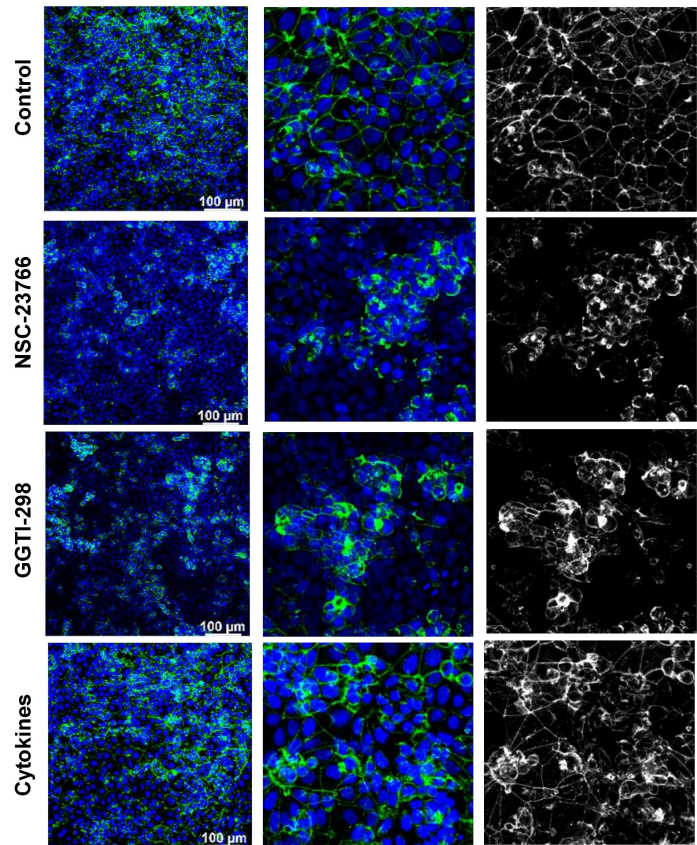
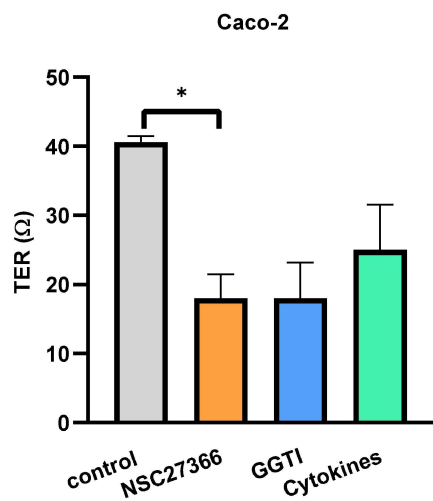
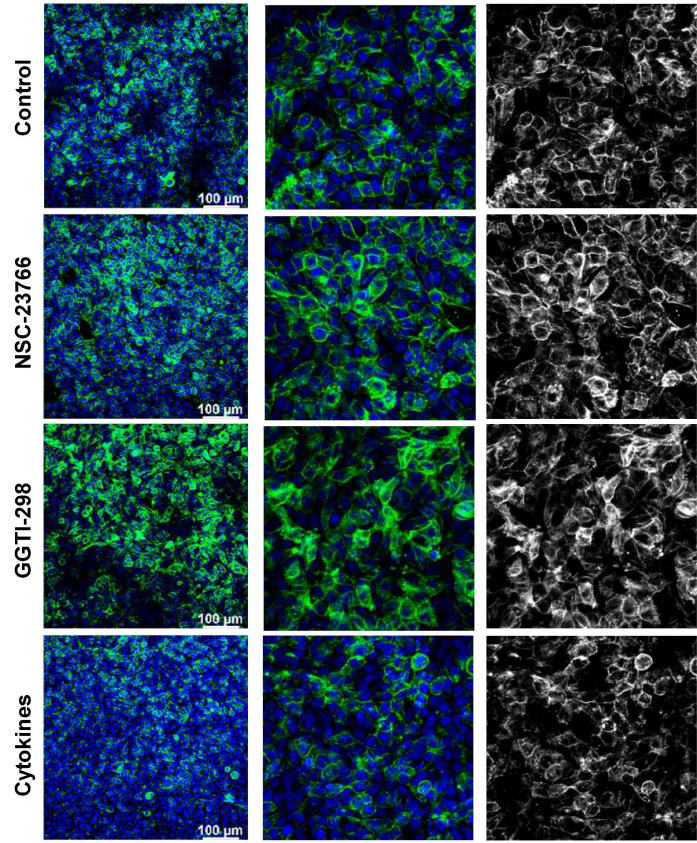
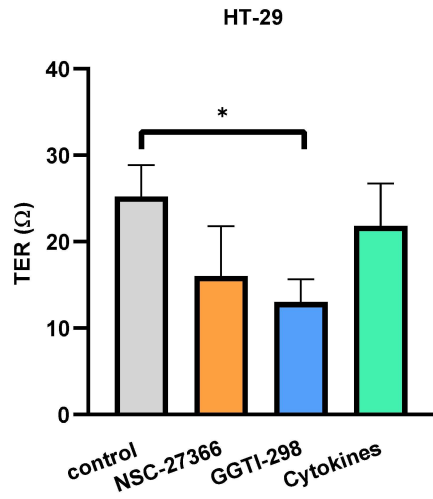


S

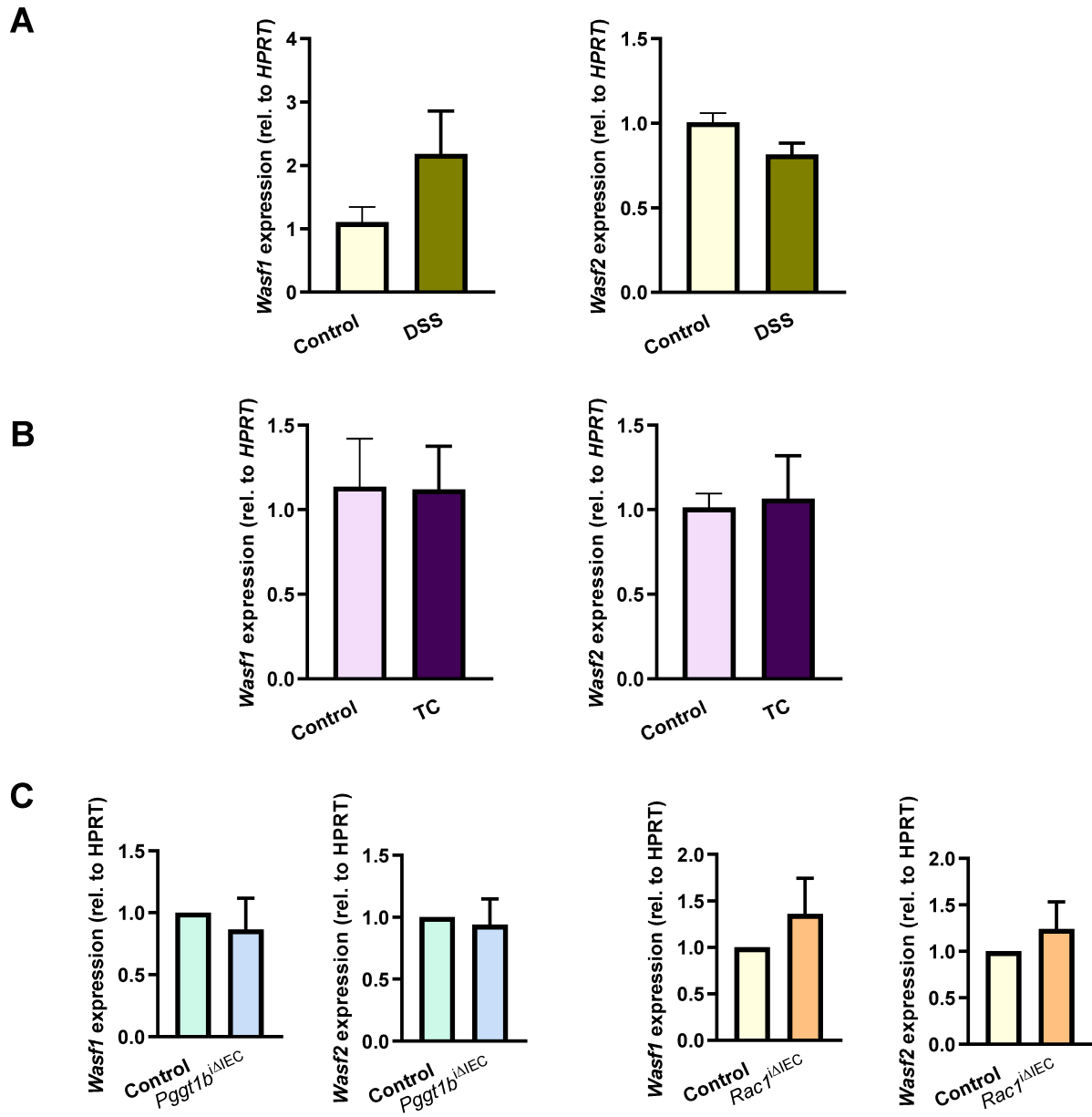


Suppl. Fig. 7: Cell shedding in IBD

E



Suppl. Fig. 7: Cell shedding in IBD



Supplementary Figure 8: Human RAC1