

Supplementary data

Supplementary tables	2
<i>Supplementary table 1.</i> Preferred Reporting Items for Systematic Reviews and Meta-Analyses (PRISMA) checklist.....	2
<i>Supplementary table 2.</i> Search strategies	5
<i>Supplementary table 3.</i> Data extraction form template	7
Supplementary figures.....	9
<i>Supplementary figure 1.</i> Forest plot of the prevalence of internet addiction considering studies with moderate risk of bias	9
<i>Supplementary figure 2.</i> Forest plot of the prevalence of internet addiction sub-grouped by African regions.....	10
<i>Supplementary figure 3.</i> Map of internet addiction prevalence sub-grouped by countries	11
<i>Supplementary figure 4.</i> Forest plot of the prevalence of severe internet addiction sub-grouped by African regions	12
<i>Supplementary figure 5.</i> Temporal evolution of internet addiction prevalence across studies	13
<i>Supplementary figure 6.</i> Funnel plot showing the risk of publication bias in the meta-analysis of internet addiction prevalence among studies with moderate risk of bias	14
<i>Supplementary figure 7.</i> Funnel plot showing the risk of publication bias in the meta-analysis of severe internet addiction prevalence	15

Supplementary tables

Supplementary table 1. Preferred Reporting Items for Systematic Reviews and Meta-Analyses (PRISMA) checklist

Section and Topic	Item #	Checklist item	Location where item is reported
TITLE			
Title	1	Identify the report as a systematic review.	
ABSTRACT			
Abstract	2	See the PRISMA 2020 for Abstracts checklist.	Page 1
INTRODUCTION			
Rationale	3	Describe the rationale for the review in the context of existing knowledge.	Page 2, 3
Objectives	4	Provide an explicit statement of the objective(s) or question(s) the review addresses.	Page 4
METHODS			
Eligibility criteria	5	Specify the inclusion and exclusion criteria for the review and how studies were grouped for the syntheses.	Page 4
Information sources	6	Specify all databases, registers, websites, organisations, reference lists and other sources searched or consulted to identify studies. Specify the date when each source was last searched or consulted.	Page 5
Search strategy	7	Present the full search strategies for all databases, registers and websites, including any filters and limits used.	Page 5
Selection process	8	Specify the methods used to decide whether a study met the inclusion criteria of the review, including how many reviewers screened each record and each report retrieved, whether they worked independently, and if applicable, details of automation tools used in the process.	Page 4, 5, 6
Data collection process	9	Specify the methods used to collect data from reports, including how many reviewers collected data from each report, whether they worked independently, any processes for obtaining or confirming data from study investigators, and if applicable, details of automation tools used in the process.	Page 6, 7
Data items	10a	List and define all outcomes for which data were sought. Specify whether all results that were compatible with each outcome domain in each study were sought (e.g. for all measures, time points, analyses), and if not, the methods used to decide which results to collect.	Page 7

	10b	List and define all other variables for which data were sought (e.g. participant and intervention characteristics, funding sources). Describe any assumptions made about any missing or unclear information.	Page 7
Study risk of bias assessment	11	Specify the methods used to assess risk of bias in the included studies, including details of the tool(s) used, how many reviewers assessed each study and whether they worked independently, and if applicable, details of automation tools used in the process.	Page 7, 8
Effect measures	12	Specify for each outcome the effect measure(s) (e.g. risk ratio, mean difference) used in the synthesis or presentation of results.	Page 8
Synthesis methods	13a	Describe the processes used to decide which studies were eligible for each synthesis (e.g. tabulating the study intervention characteristics and comparing against the planned groups for each synthesis (item #5)).	Page 8, 9
	13b	Describe any methods required to prepare the data for presentation or synthesis, such as handling of missing summary statistics, or data conversions.	Page 8, 9
	13c	Describe any methods used to tabulate or visually display results of individual studies and syntheses.	Page 8, 9
	13d	Describe any methods used to synthesize results and provide a rationale for the choice(s). If meta-analysis was performed, describe the model(s), method(s) to identify the presence and extent of statistical heterogeneity, and software package(s) used.	Page 8, 9
	13e	Describe any methods used to explore possible causes of heterogeneity among study results (e.g. subgroup analysis, meta-regression).	Page 8
	13f	Describe any sensitivity analyses conducted to assess robustness of the synthesized results.	/
Reporting bias assessment	14	Describe any methods used to assess risk of bias due to missing results in a synthesis (arising from reporting biases).	Page 9
Certainty assessment	15	Describe any methods used to assess certainty (or confidence) in the body of evidence for an outcome.	Page 9
RESULTS			
Study selection	16a	Describe the results of the search and selection process, from the number of records identified in the search to the number of studies included in the review, ideally using a flow diagram.	Page 9, 10
	16b	Cite studies that might appear to meet the inclusion criteria, but which were excluded, and explain why they were excluded.	Page 10
Study characteristics	17	Cite each included study and present its characteristics.	Page 10,11
Risk of bias in studies	18	Present assessments of risk of bias for each included study.	Page 11

Results of individual studies	19	For all outcomes, present, for each study: (a) summary statistics for each group (where appropriate) and (b) an effect estimate and its precision (e.g. confidence/credible interval), ideally using structured tables or plots.	Page 10, 11
Results of syntheses	20a	For each synthesis, briefly summarise the characteristics and risk of bias among contributing studies.	Page 11, 12
	20b	Present results of all statistical syntheses conducted. If meta-analysis was done, present for each the summary estimate and its precision (e.g. confidence/credible interval) and measures of statistical heterogeneity. If comparing groups, describe the direction of the effect.	Page 11, 12
	20c	Present results of all investigations of possible causes of heterogeneity among study results.	Page 12
	20d	Present results of all sensitivity analyses conducted to assess the robustness of the synthesized results.	/
Reporting biases	21	Present assessments of risk of bias due to missing results (arising from reporting biases) for each synthesis assessed.	Page 12
Certainty of evidence	22	Present assessments of certainty (or confidence) in the body of evidence for each outcome assessed.	Page 12
DISCUSSION			
Discussion	23a	Provide a general interpretation of the results in the context of other evidence.	Page 13 – 16
	23b	Discuss any limitations of the evidence included in the review.	Page 16
	23c	Discuss any limitations of the review processes used.	Page 16
	23d	Discuss implications of the results for practice, policy, and future research.	Page 16, 17
OTHER INFORMATION			
Registration and protocol	24a	Provide registration information for the review, including register name and registration number, or state that the review was not registered.	Page 4
	24b	Indicate where the review protocol can be accessed, or state that a protocol was not prepared.	Page 4
	24c	Describe and explain any amendments to information provided at registration or in the protocol.	/
Support	25	Describe sources of financial or non-financial support for the review, and the role of the funders or sponsors in the review.	Title page
Competing interests	26	Declare any competing interests of review authors.	Title page
Availability of data, code and other materials	27	Report which of the following are publicly available and where they can be found: template data collection forms; data extracted from included studies; data used for all analyses; analytic code; any other materials used in the review.	/

Supplementary table 2. Search strategies

Database	Search strategy
PubMed	("Internet addiction disorder"[MeSH Terms] OR "Internet addiction disorder"[All Fields] OR "internet addict*"[All Fields] OR "Internet gaming addiction"[All Fields] OR "Internet Gaming Disorder"[All Fields] OR "pathological internet use"[All Fields] OR "Excessive internet use"[All Fields] OR "Problematic Internet use"[All Fields] OR "internet depend*"[All Fields] OR "Internet overuse"[All Fields]) AND (("Africa"[MeSH Terms] OR "africa*"[All Fields] OR "Algeria"[All Fields] OR "Angola"[All Fields] OR "Benin"[All Fields] OR "Botswana"[All Fields] OR "Burkina Faso"[All Fields] OR "Burundi"[All Fields] OR "Cameroon"[All Fields] OR "Cape Verde"[All Fields] OR "Central African Republic"[All Fields] OR "Chad"[All Fields] OR "Comoros"[All Fields] OR "Congo"[All Fields] OR "Democratic Republic of Congo"[All Fields] OR "Djibouti"[All Fields] OR "Egypt"[All Fields] OR "Equatorial Guinea"[All Fields] OR "Eritrea"[All Fields] OR "Ethiopia"[All Fields] OR "Gabon"[All Fields] OR "Gambia"[All Fields] OR "Ghana"[All Fields] OR "Guinea"[All Fields] OR "Guinea Bissau"[All Fields] OR "Ivory Coast"[All Fields] OR "Cote d'Ivoire"[All Fields] OR "Jamahiriya"[All Fields] OR "Kenya"[All Fields] OR "Lesotho"[All Fields] OR "Liberia"[All Fields] OR "Libya"[All Fields] OR "Libia"[All Fields] OR "Madagascar"[All Fields] OR "Malawi"[All Fields] OR "Mali"[All Fields] OR "Mauritania"[All Fields] OR "Mauritius"[All Fields] OR "Morocco"[All Fields] OR "Mozambique"[All Fields] OR "Mocambique"[All Fields] OR "Namibia"[All Fields] OR "Niger"[All Fields] OR "Nigeria"[All Fields] OR "Principe"[All Fields] OR "Rwanda"[All Fields] OR "Sao Tome"[All Fields] OR "Senegal"[All Fields] OR "Seychelles"[All Fields] OR "Sierra Leone"[All Fields] OR "Somalia"[All Fields] OR "South Africa"[All Fields] OR "Sudan"[All Fields] OR "Swaziland"[All Fields] OR "Tanzania"[All Fields] OR "Togo"[All Fields] OR "Tunisia"[All Fields] OR "Uganda"[All Fields] OR "Western Sahara"[All Fields] OR "Zaire"[All Fields] OR "Zambia"[All Fields] OR "Zimbabwe"[All Fields] OR "Central Africa"[All Fields] OR "Central African"[All Fields] OR "West Africa"[All Fields] OR "West African"[All Fields] OR "Western Africa"[All Fields] OR "Western African"[All Fields] OR "East Africa"[All Fields] OR "East African"[All Fields] OR "Eastern Africa"[All Fields] OR "Eastern African"[All Fields] OR "North Africa"[All Fields] OR "North African"[All Fields] OR "Northern Africa"[All Fields] OR "Northern African"[All Fields] OR "South African"[All Fields] OR "Southern Africa"[All Fields] OR "Southern African"[All Fields] OR "sub Saharan Africa"[All Fields] OR "sub Saharan African"[All Fields] OR "subSaharan Africa"[All Fields] OR "subSaharan African"[All Fields]) NOT ("guinea pig"[All Fields] OR "guinea pigs"[All Fields] OR "aspergillus niger"[All Fields] OR "African American"[All Fields] OR "African Americans"[All Fields]))
EMBASE	('internet addiction'/exp OR 'internet addiction' OR 'internet gaming addiction' OR 'internet gaming disorder'/exp OR 'internet gaming disorder' OR 'pathological internet use'/exp OR 'pathological internet use' OR 'excessive internet use'/exp OR 'excessive internet use' OR 'problematic internet use'/exp OR 'problematic internet use' OR 'internet dependency'/exp OR 'internet dependency' OR 'internet overuse'/exp OR 'internet overuse') AND ('africa'/exp OR africa OR 'algeria'/exp OR algeria OR 'angola'/exp OR angola OR 'benin'/exp OR benin OR 'botswana'/exp OR botswana OR 'burkina faso'/exp OR 'burkina faso' OR 'burundi'/exp OR burundi OR 'cameroon'/exp OR cameroon OR 'cape verde'/exp OR 'cape verde' OR

	<p>'central african republic'/exp OR 'central african republic' OR 'chad'/exp OR chad OR 'comoros'/exp OR comoros OR 'congo'/exp OR congo OR 'djibouti'/exp OR djibouti OR 'egypt'/exp OR egypt OR 'equatorial guinea'/exp OR 'equatorial guinea' OR 'eritrea'/exp OR eritrea OR 'ethiopia'/exp OR ethiopia OR 'gabon'/exp OR gabon OR 'gambia'/exp OR 'gambia' OR 'ghana'/exp OR ghana OR 'guinea'/exp OR guinea OR 'guinea bissau'/exp OR 'guinea bissau' OR 'cote d'ivoire'/exp OR 'cote d'ivoire' OR 'kenya'/exp OR kenya OR 'lesotho'/exp OR lesotho OR 'liberia'/exp OR liberia OR 'libya'/exp OR libya OR 'libia'/exp OR libia OR 'madagascar'/exp OR madagascar OR 'malawi'/exp OR malawi OR 'mali'/exp OR mali OR 'mauritania'/exp OR mauritania OR 'mauritus'/exp OR mauritius OR 'morocco'/exp OR morocco OR 'mozambique'/exp OR mozambique OR 'mocambique'/exp OR mocambique OR 'namibia'/exp OR namibia OR 'niger'/exp OR niger OR 'nigeria'/exp OR nigeria OR principe OR 'rwanda'/exp OR rwanda OR 'sao tome' OR (sao AND tome) OR 'sénégal' OR 'seychelles'/exp OR seychelles OR 'sierra leone'/exp OR 'sierra leone' OR (sierra AND leone) OR 'somalia'/exp OR somalia OR 'south africa'/exp OR 'south africa' OR (south AND ('africa'/exp OR africa)) OR 'sudan'/exp OR sudan OR 'swaziland'/exp OR swaziland OR 'tanzania'/exp OR tanzania OR 'togo'/exp OR togo OR 'tunisia'/exp OR tunisia OR 'uganda'/exp OR uganda OR 'zambia'/exp OR zambia OR 'zimbabwe'/exp OR zimbabwe OR 'central africa'/exp OR 'central africa' OR 'eastern africa'/exp OR 'eastern africa' OR 'western africa'/exp OR 'western africa' OR 'northern africa'/exp OR 'northern africa' OR 'southern africa'/exp OR 'southern africa' OR 'sub saharan africa'/exp OR 'sub saharan africa')</p> <p>NOT ('guinea pig'/exp OR 'guinea pig' OR 'guinea pigs'/exp OR 'guinea pigs' OR 'aspergillus niger'/exp OR 'aspergillus niger' OR 'african american'/exp OR 'african american' OR 'african americans'/exp OR 'african americans')</p>
<p>PsycINFO (Ovid)</p>	<p>((("Internet addiction disorder" or "internet addict*" or "Internet gaming addiction" or "Internet Gaming Disorder" or "pathological internet use" or "Excessive internet use" or "Problematic Internet use" or "internet depend*" or "Internet overuse") AND (("Africa*" or "Algeria" or "Angola" or "Benin" or "Botswana" or "Burkina Faso" or "Burundi" or "Cameroon" or "Cape Verde" or "Central African Republic" or "Chad" or "Comoros" or "Congo" or "Democratic Republic of Congo" or "Djibouti" or "Egypt" or "Equatorial Guinea" or "Eritrea" or "Ethiopia" or "Gabon" or "Gambia" or "Ghana" or "Guinea" or "Guinea Bissau" or "Ivory Coast" or "Cote d'Ivoire" or "Jamahiriya" or "Kenya" or "Lesotho" or "Liberia" or "Libya" or "Libia" or "Madagascar" or "Malawi" or "Mali" or "Mauritania" or "Mauritius" or "Morocco" or "Mozambique" or "Mocambique" or "Namibia" or "Niger" or "Nigeria" or "Principe" or "Rwanda" or "Sao Tome" or "Senegal" or "Seychelles" or "Sierra Leone" or "Somalia" or "South Africa" or "Sudan" or "Swaziland" or "Tanzania" or "Togo" or "Tunisia" or "Uganda" or "Western Sahara" or "Zaire" or "Zambia" or "Zimbabwe" or "Central Africa" or "Central African" or "West Africa" or "West African" or "Western Africa" or "Western African" or "East Africa" or "East African" or "Eastern Africa" or "Eastern African" or "North Africa" or "North African" or "Northern Africa" or "Northern African" or "South African" or "Southern Africa" or "Southern African" or "sub Saharan Africa" or "sub Saharan African" or "subSaharan Africa" or "subSaharan African") not ("guinea pig" or "guinea pigs" or "aspergillus niger" or "African American" or "African Americans")))[mp=title, abstract, heading word, table of contents, key concepts, original title, tests & measures, mesh]</p>

Cochrane database	((("Internet addiction disorder" or "internet addict*" or "Internet gaming addiction" or "Internet Gaming Disorder" or "pathological internet use" or "Excessive internet use" or "Problematic Internet use" or "internet depend*" or "Internet overuse") and (("Africa*" or "Algeria" or "Angola" or "Benin" or "Botswana" or "Burkina Faso" or "Burundi" or "Cameroon" or "Cape Verde" or "Central African Republic" or "Chad" or "Comoros" or "Congo" or "Democratic Republic of Congo" or "Djibouti" or "Egypt" or "Equatorial Guinea" or "Eritrea" or "Ethiopia" or "Gabon" or "Gambia" or "Ghana" or "Guinea" or "Guinea Bissau" or "Ivory Coast" or "Cote d'Ivoire" or "Jamahiriya" or "Kenya" or "Lesotho" or "Liberia" or "Libya" or "Libia" or "Madagascar" or "Malawi" or "Mali" or "Mauritania" or "Mauritius" or "Morocco" or "Mozambique" or "Mocambique" or "Namibia" or "Niger" or "Nigeria" or "Principe" or "Rwanda" or "Sao Tome" or "Senegal" or "Seychelles" or "Sierra Leone" or "Somalia" or "South Africa" or "Sudan" or "Swaziland" or "Tanzania" or "Togo" or "Tunisia" or "Uganda" or "Western Sahara" or "Zaire" or "Zambia" or "Zimbabwe" or "Central Africa" or "Central African" or "West Africa" or "West African" or "Western Africa" or "Western African" or "East Africa" or "East African" or "Eastern Africa" or "Eastern African" or "North Africa" or "North African" or "Northern Africa" or "Northern African" or "South African" or "Southern Africa" or "Southern African" or "sub Saharan Africa" or "sub Saharan African" or "subSaharan Africa" or "subSaharan African") not ("guinea pig" or "guinea pigs" or "aspergillus niger" or "African American" or "African Americans")))).mp. [mp=title, abstract, heading word, table of contents, key concepts, original title, tests & measures, mesh]
-------------------	---

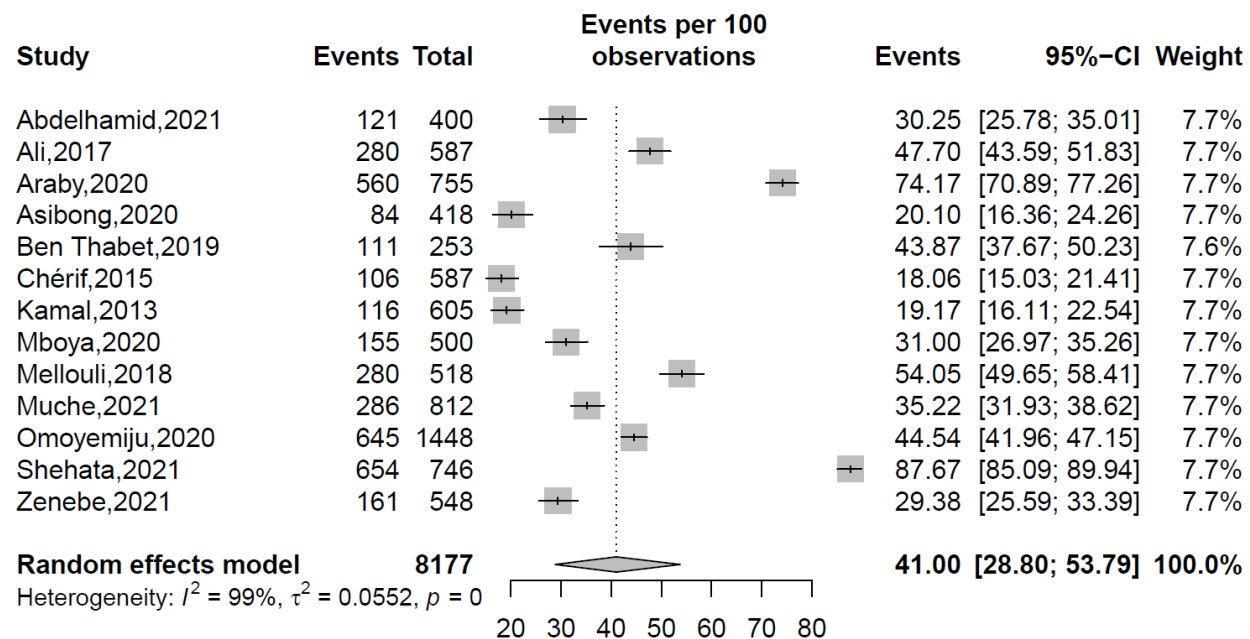
Supplementary table 3. Data extraction form template

BIBLIOMETRIC PROFILE	
Family name of the first author	
Year of publication	
Journal of publication	
CHARACTERISTICS OF INCLUDED STUDIES (Unless specific precision, for each item there is only one choice)	
Study design	<ol style="list-style-type: none"> 1. Cross-sectional 2. Cohort study (baseline data) 3. Case control study 4. Unclear study design
Study period (Ex: 2003-2005; 2000)	
Study setting	<ol style="list-style-type: none"> 1. Hospital-based 2. Population/community based 3. Institution-based (University) 4. Not reported
Study area	<ol style="list-style-type: none"> 1. Urban 2. Rural 3. Urban and Rural 4. Not Reported
Timing of data collection	<ol style="list-style-type: none"> 1. Prospectively

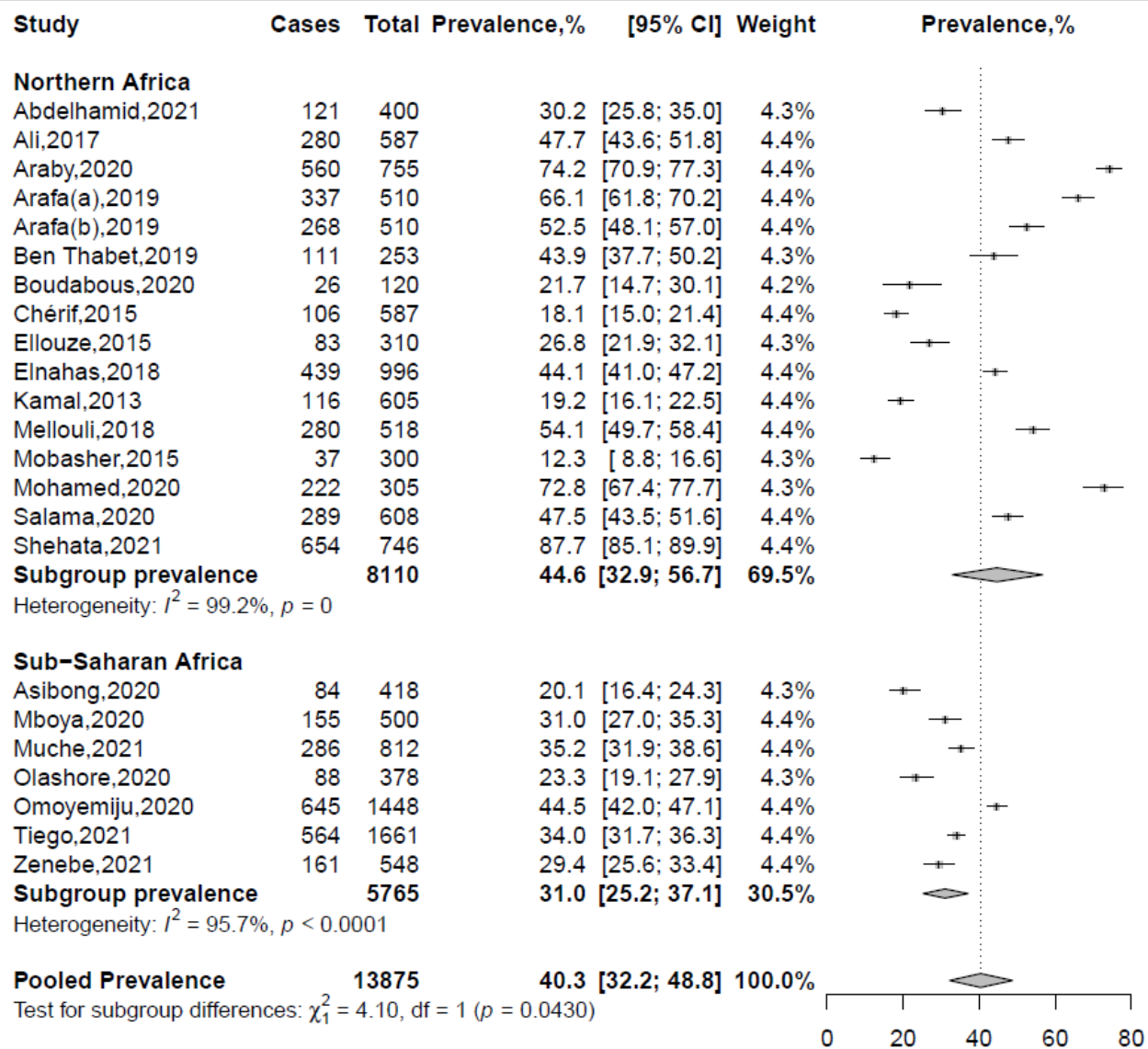
	<ol style="list-style-type: none"> 2. Retrospectively 3. Unclear
Sampling method	<ol style="list-style-type: none"> 1. Probabilistic 2. Non probabilistic 3. Unclear
Sampling size	<ol style="list-style-type: none"> 1. Targeted sample size calculated and attained 2. Targeted sample size calculated and not attained 3. Targeted sample size not calculated
Mean or median of age	
Inferior limit of age in years	
Superior limit of age in years	
Response rate	<ol style="list-style-type: none"> 1. > 80% 2. ≤ 80% 3. Not described
KEY DATA EXTRACTION SECTION: One key data extraction section should be considered for each tool if many tools are used in a same study. (Unless specific precision, for each item of multiple choices questions there is only one choice)	
Label of the studied condition	
Tool or method used to conclude	
Cut-off used	
Country (for multicountry study, extract data for each country)	
Population according to the age	<ol style="list-style-type: none"> 1. Unspecified 2. Adolescent 3. Adults without the elderly 4. Elderly 5. Adolescents and adults 6. Adults including the elderly
Population according the professional status	<ol style="list-style-type: none"> 1. Unspecified 2. Secondary schools' students 3. University students 4. Others (to precise...)
Population according to education level	<ol style="list-style-type: none"> 1. Unspecified 2. None 3. Primary school 4. Secondary school 5. University

Total number of participants	
Total number of IA cases	
Total number of male participants	
Number of IA cases among male participants	
Total number of female participants	
Number of IA cases among female participants	

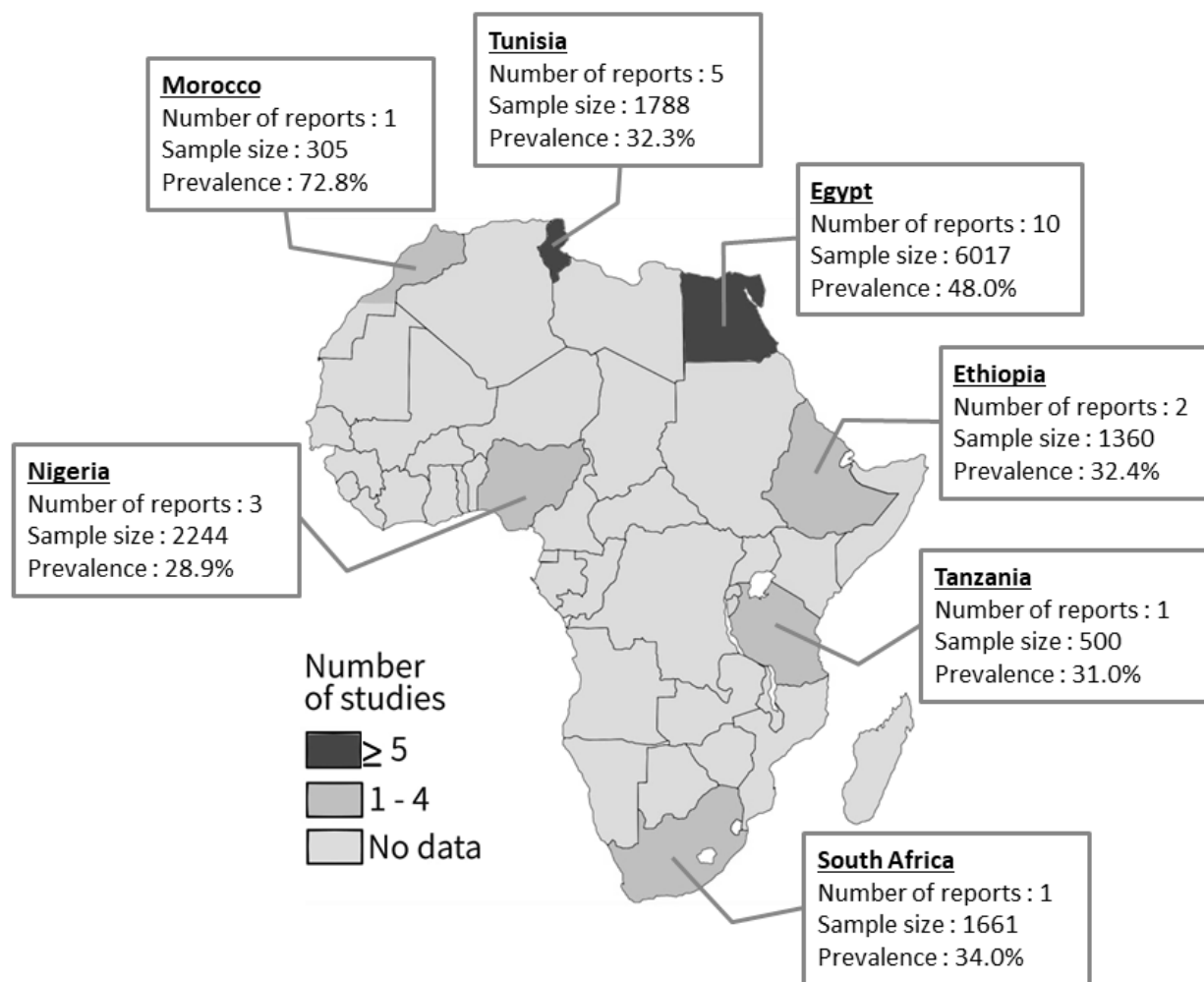
Supplementary figures



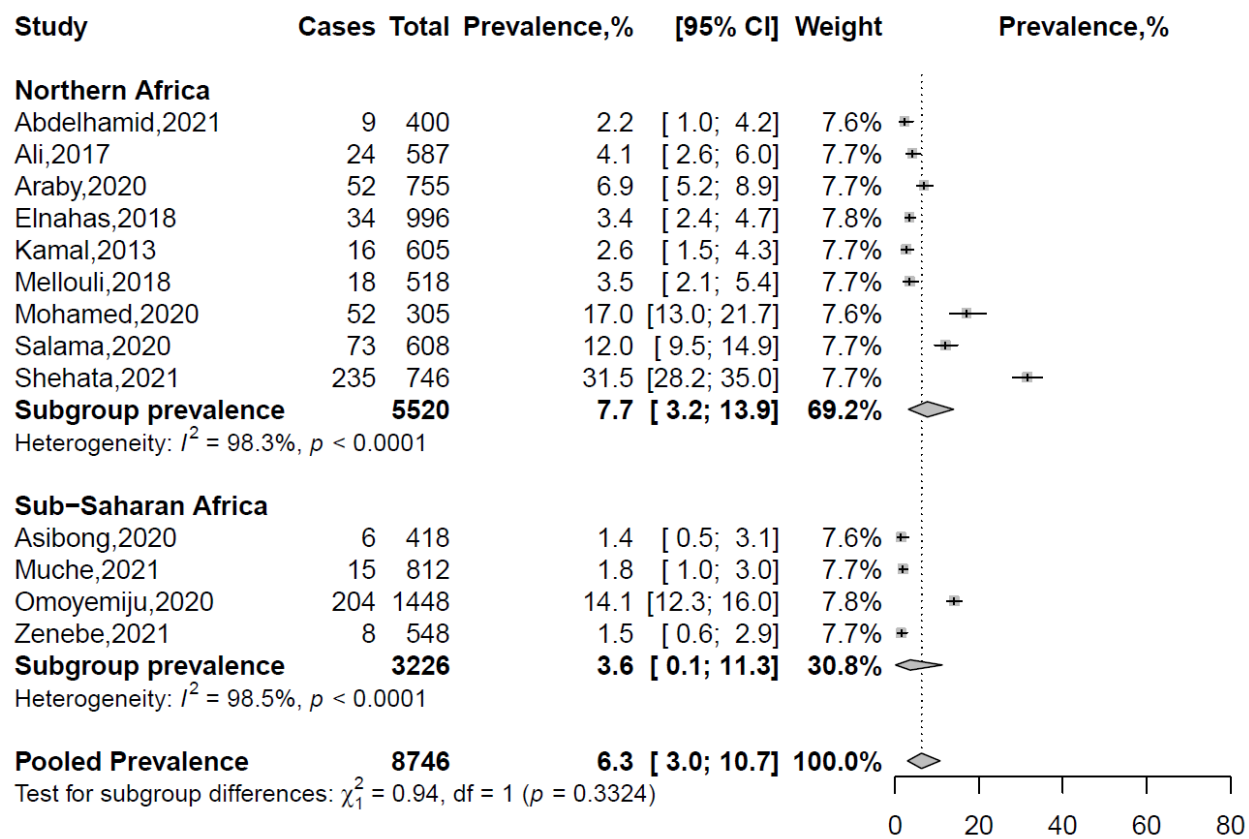
Supplementary figure 1. Forest plot of the prevalence of internet addiction considering studies with moderate risk of bias



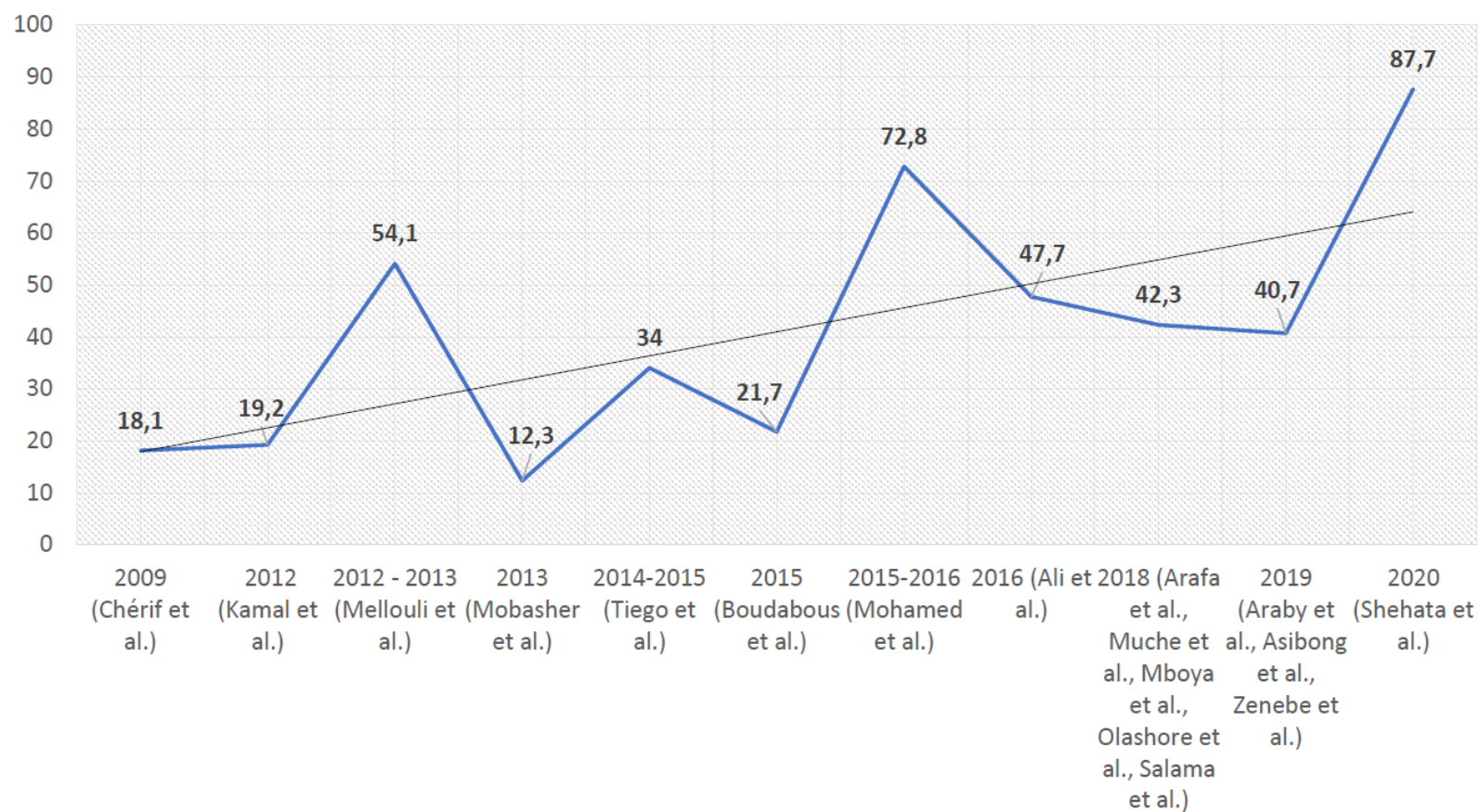
Supplementary figure 2. Forest plot of the prevalence of internet addiction sub-grouped by African regions



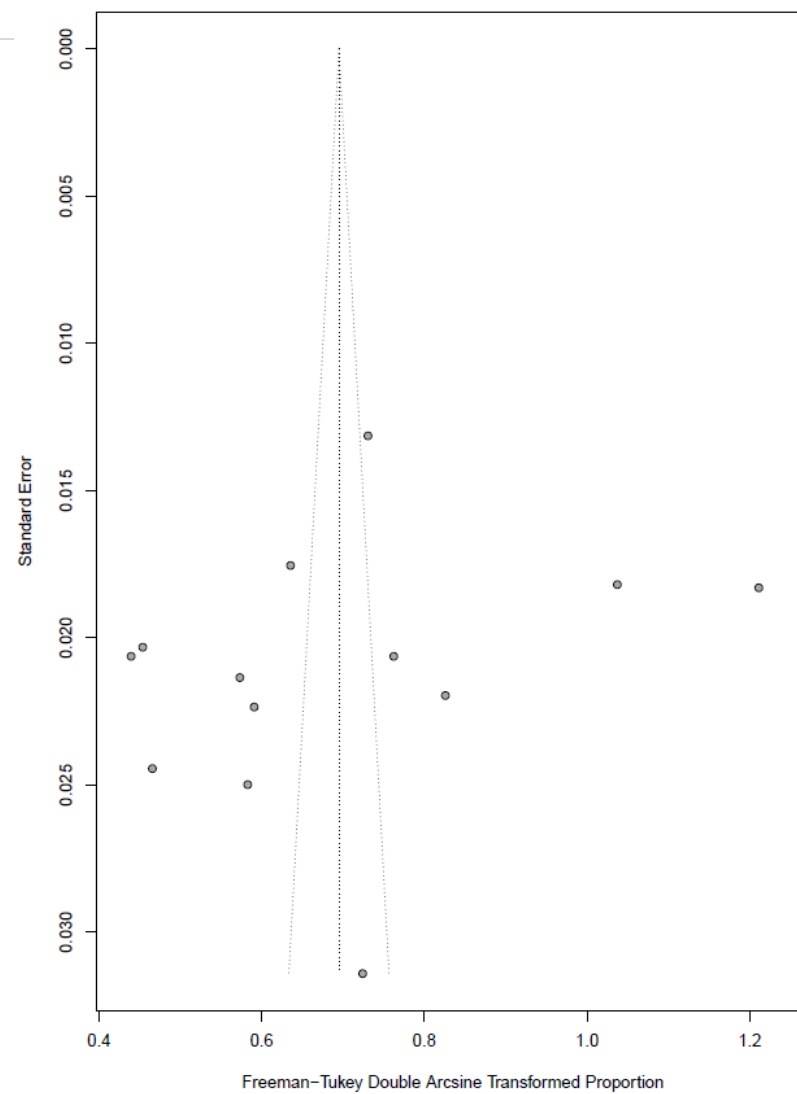
Supplementary figure 3. Map of internet addiction prevalence sub-grouped by countries



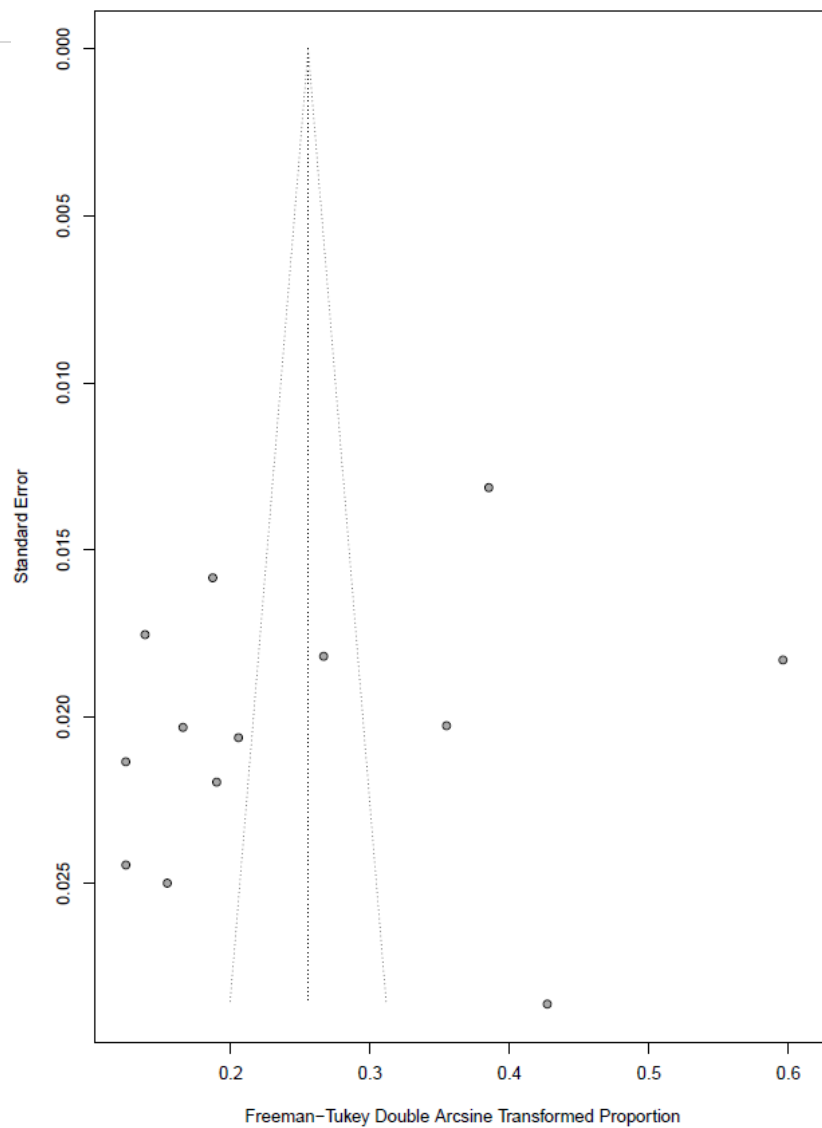
Supplementary figure 4. Forest plot of the prevalence of severe internet addiction sub-grouped by African regions



Supplementary figure 5. Temporal evolution of internet addiction prevalence across studies



Supplementary figure 6. Funnel plot showing the risk of publication bias in the meta-analysis of internet addiction prevalence among studies with moderate risk of bias



Supplementary figure 7. Funnel plot showing the risk of publication bias in the meta-analysis of severe internet addiction prevalence