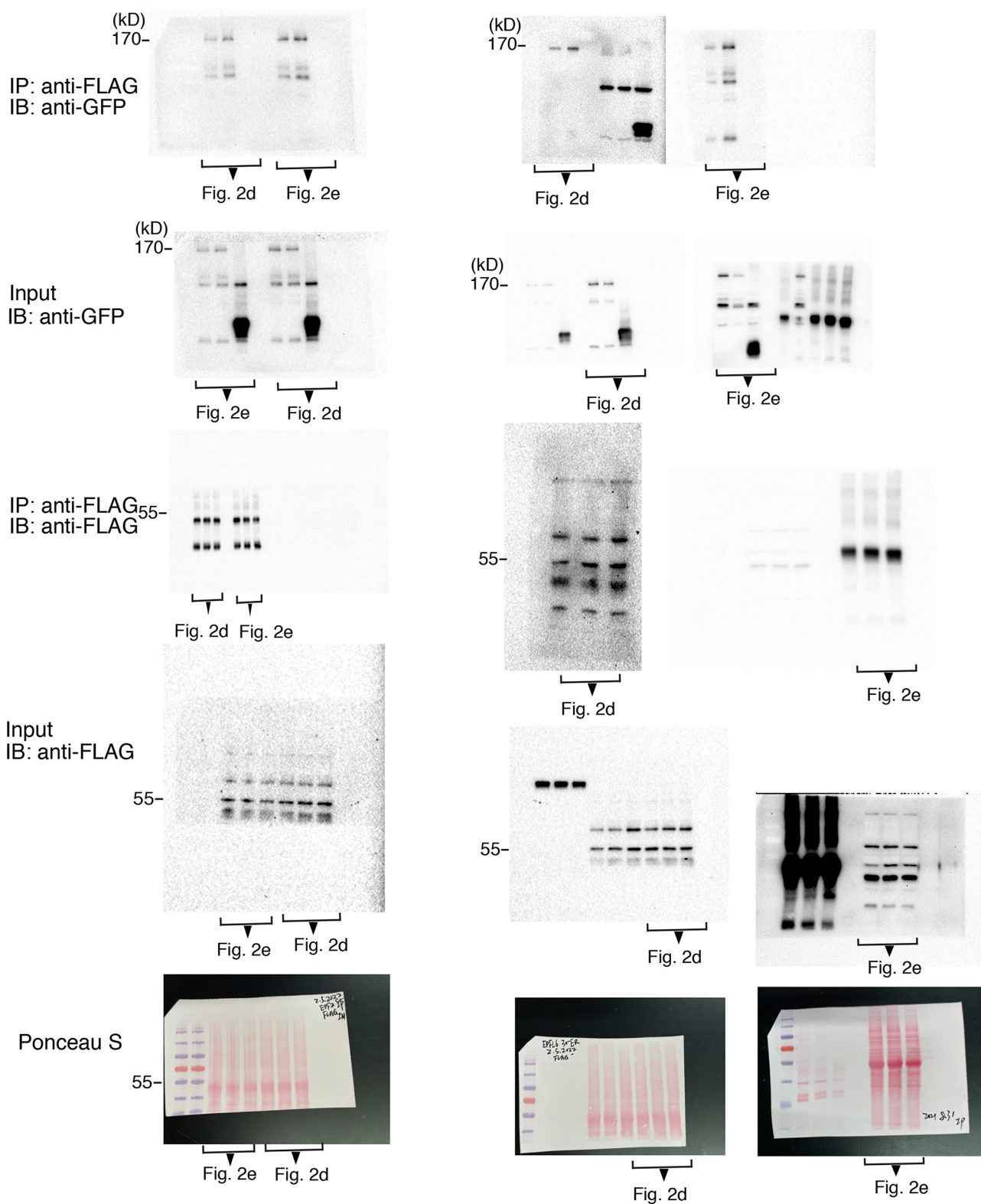


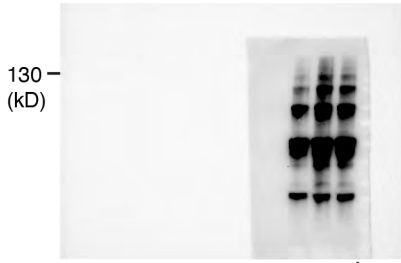
Fig. 2d, e



The above:  
EPF2 treatment for PUB30-ERECTA (Fig.2d)  
and PUB31-ERECTA (Fig.2e)

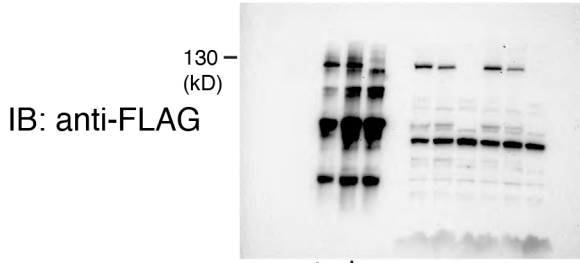
The above:  
EPFL6 treatment for PUB30-ERECTA (Fig.2d)  
and PUB31-ERECTA (Fig.2e)

Fig. 3a



IB: anti-Ub

Fig. 3a

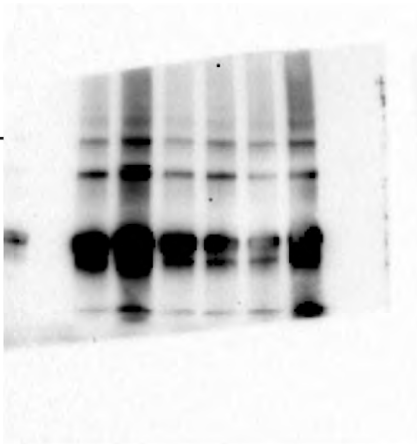


IB: anti-FLAG

Fig. 3a

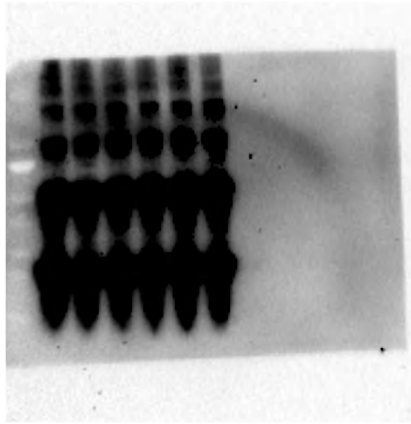
Fig. 3e

IP: anti-FLAG  
IB: anti-HA



IB: anti-FLAG

130-



IB: anti-MYC

55-

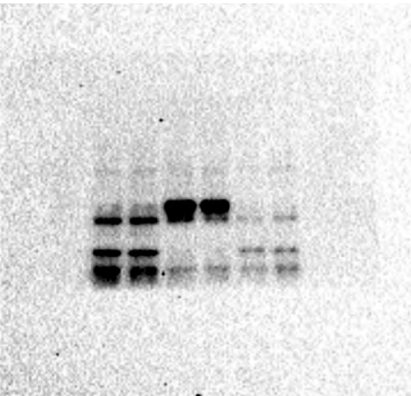
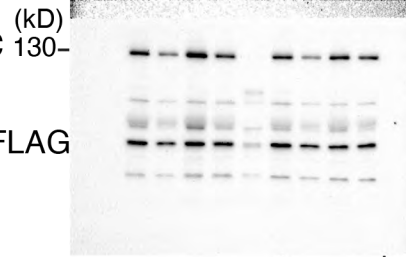


Fig. 3c



IB: anti-FLAG

Fig. 3c

IB: anti-actin

40-



Fig. 3c

Ponceau S

55-

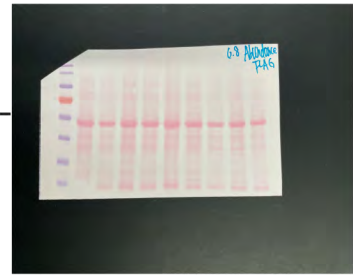
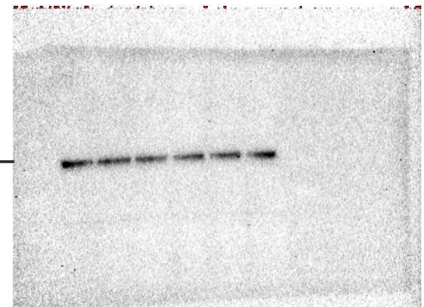


Fig. 3c

IB: anti-HA

130-



Ponceau S

55-

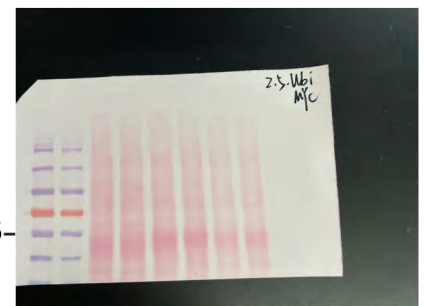


Fig. 3c

Fig. 4d

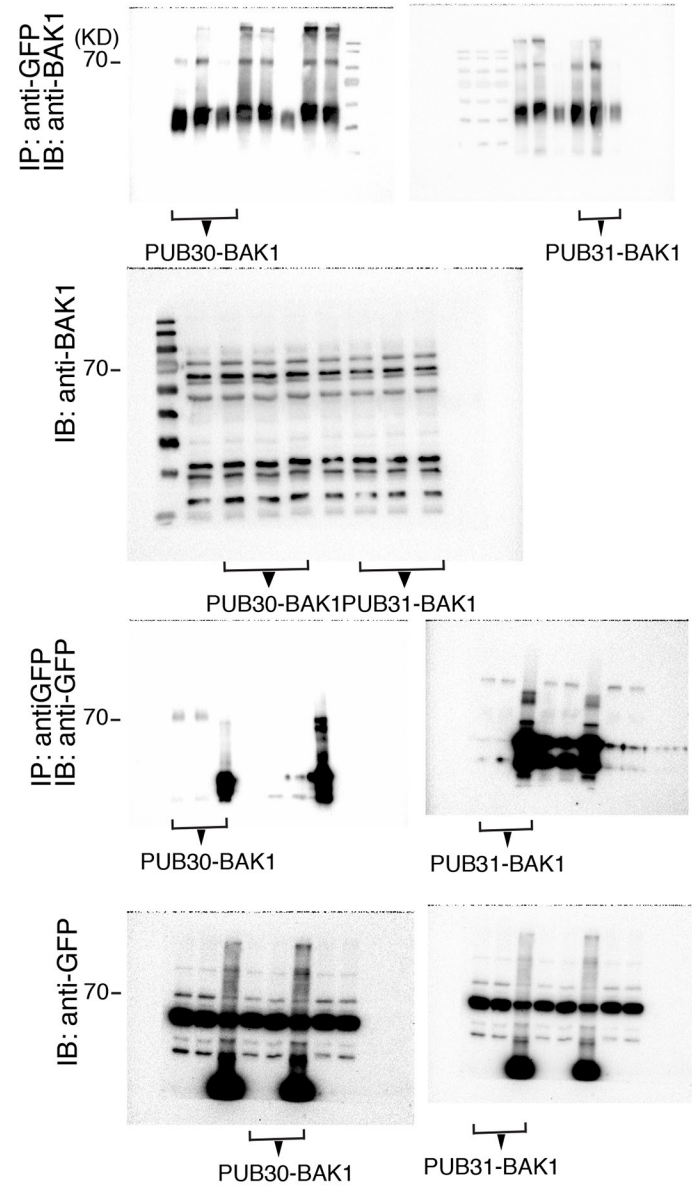


Fig. 4e, f

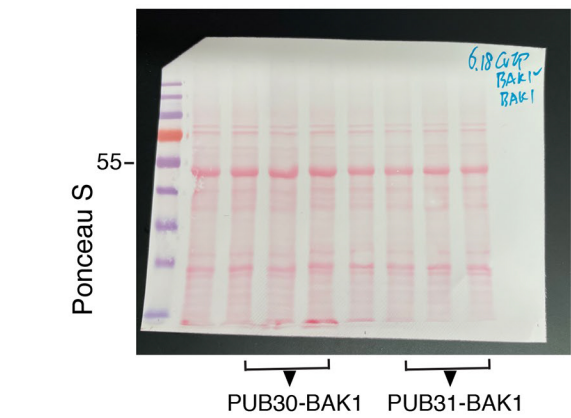
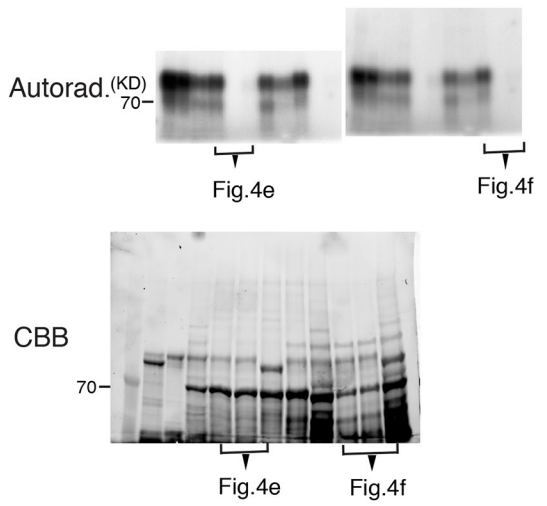


Fig. 5a

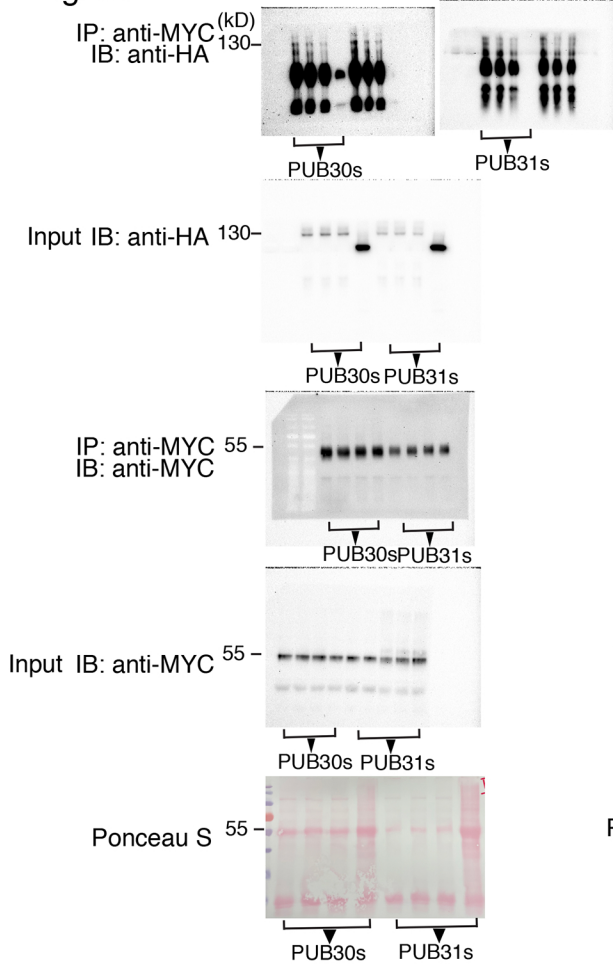


Fig. 5b

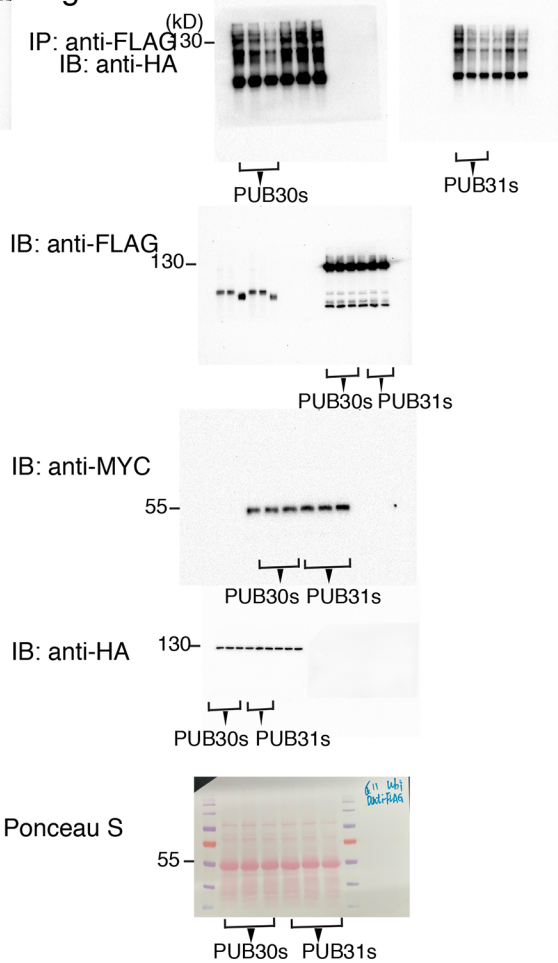
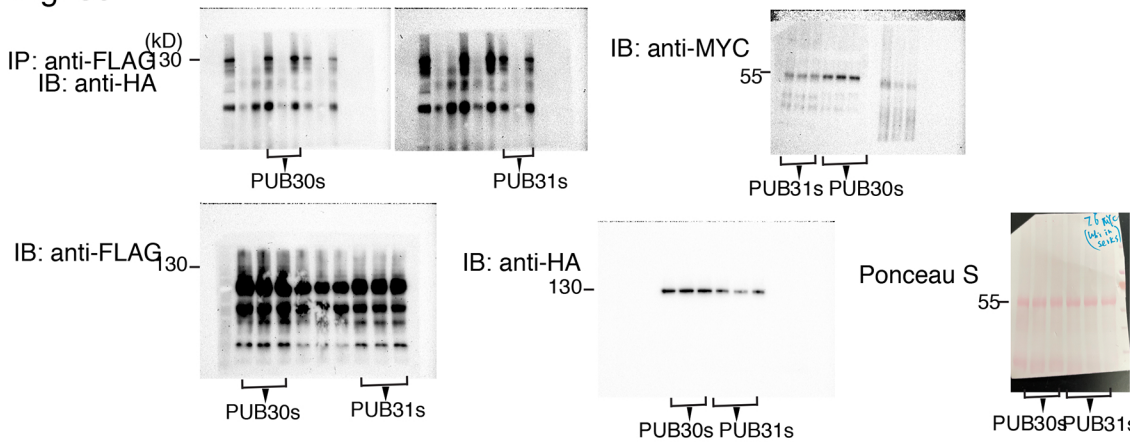
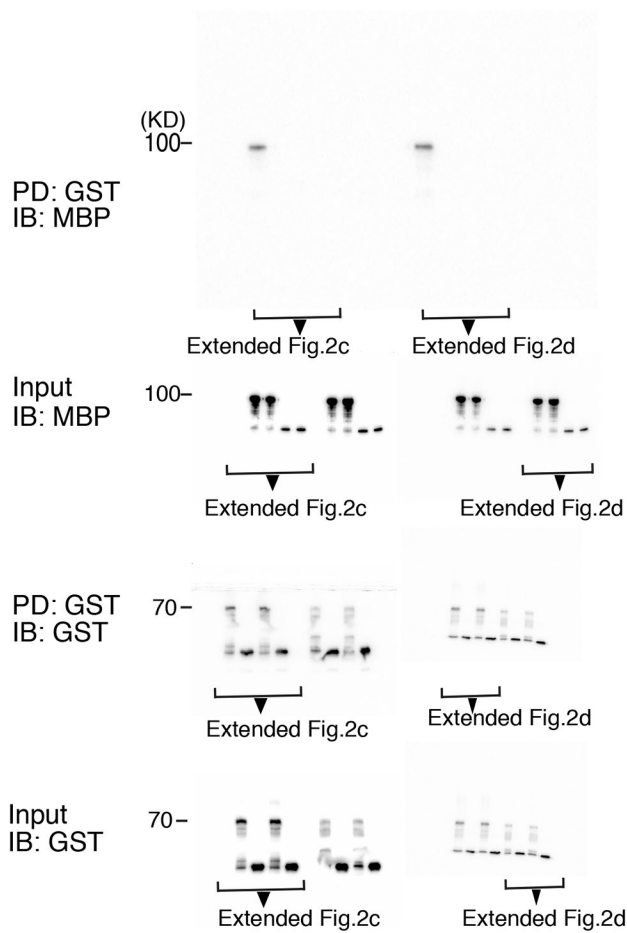


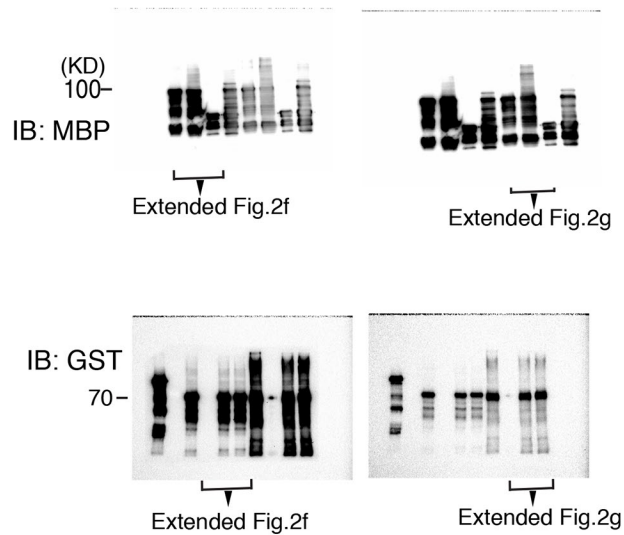
Fig. 5c



Extended Fig. 2c, d

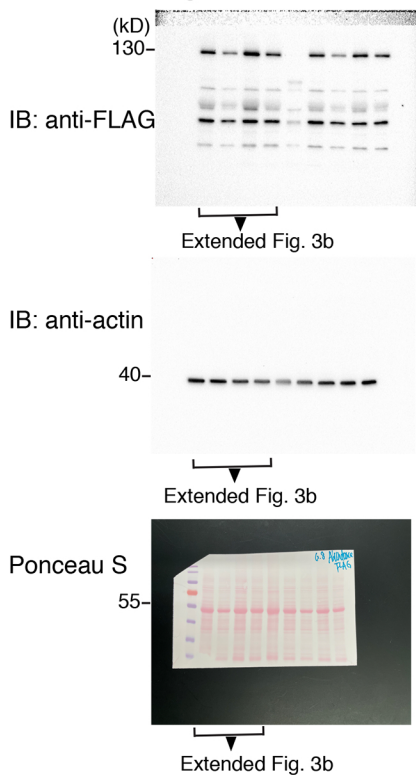


Extended Fig. 2f, g

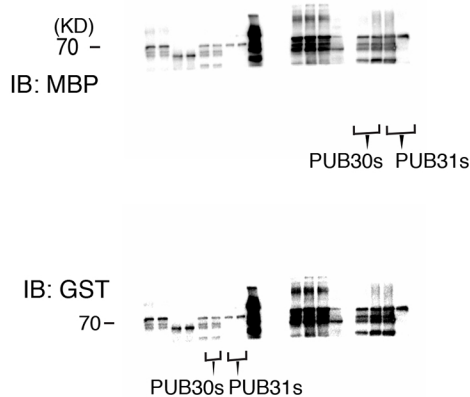




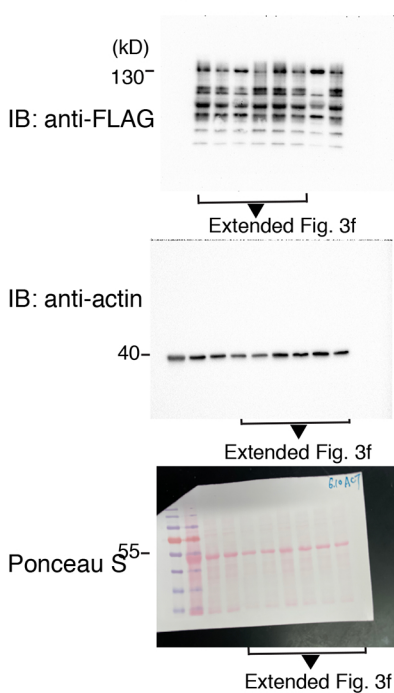
Extended Fig. 3b



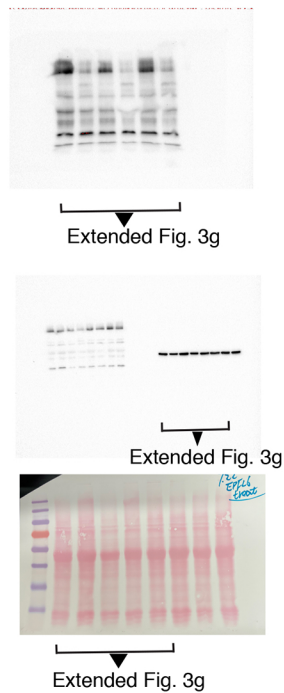
Extended Fig. 3e



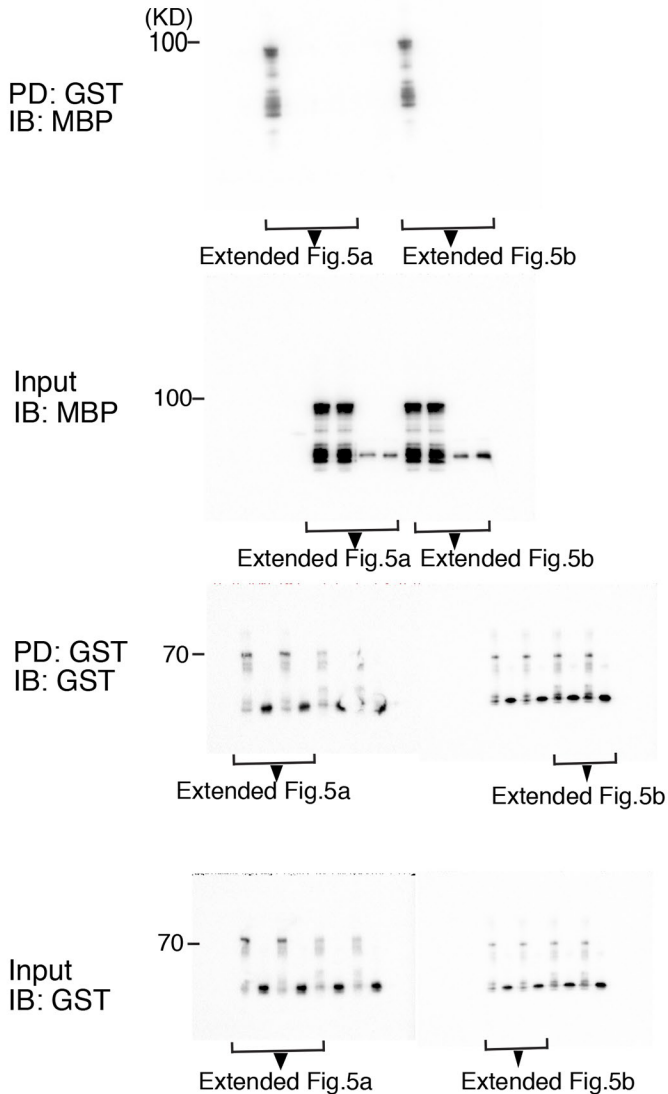
Extended Fig. 3f



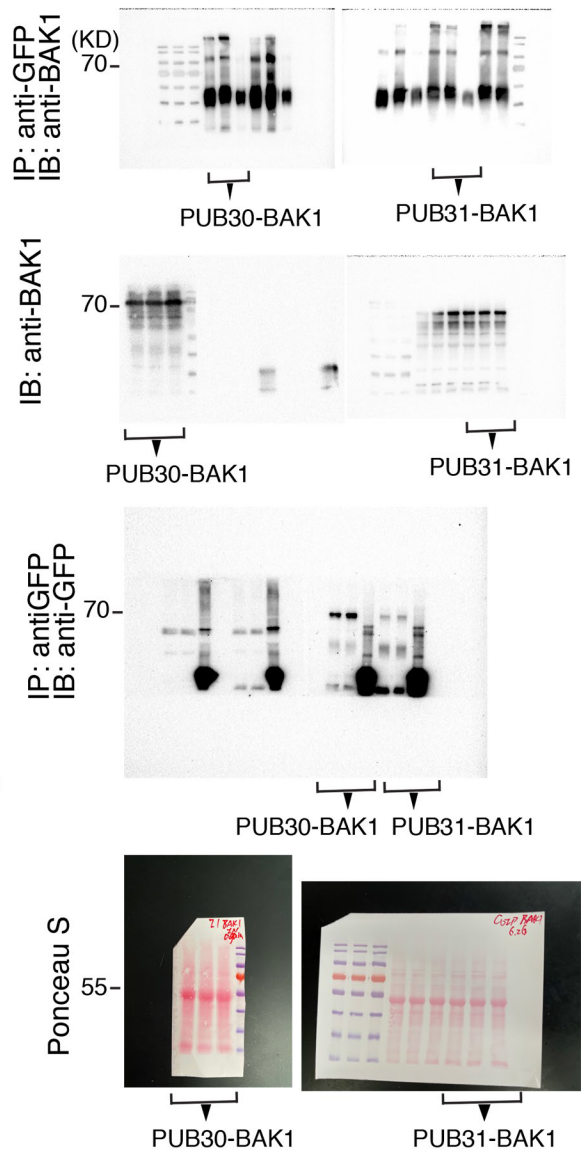
Extended Fig. 3g



Extended Fig. 5a, b



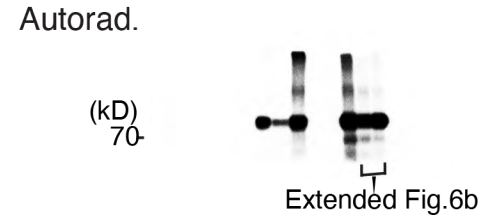
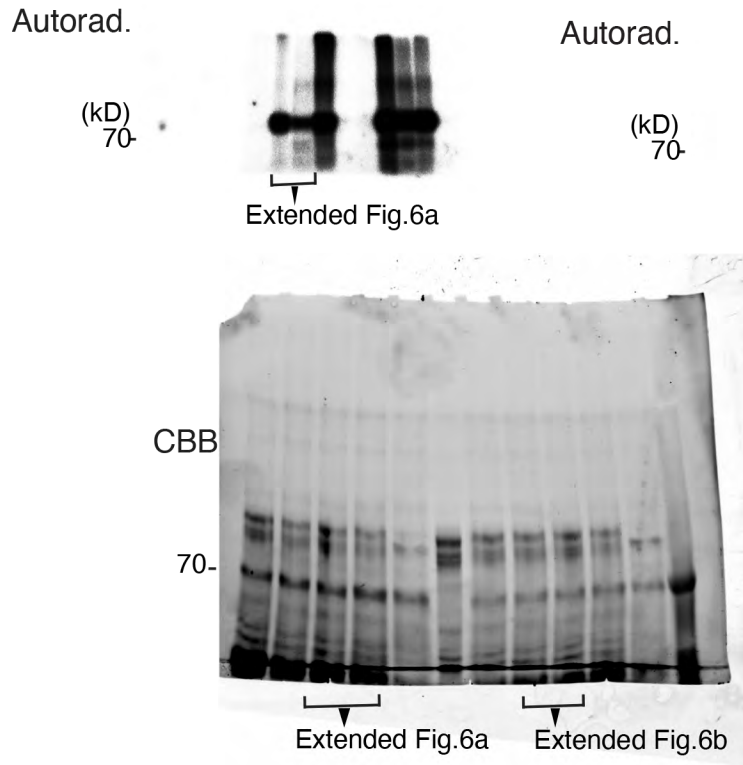
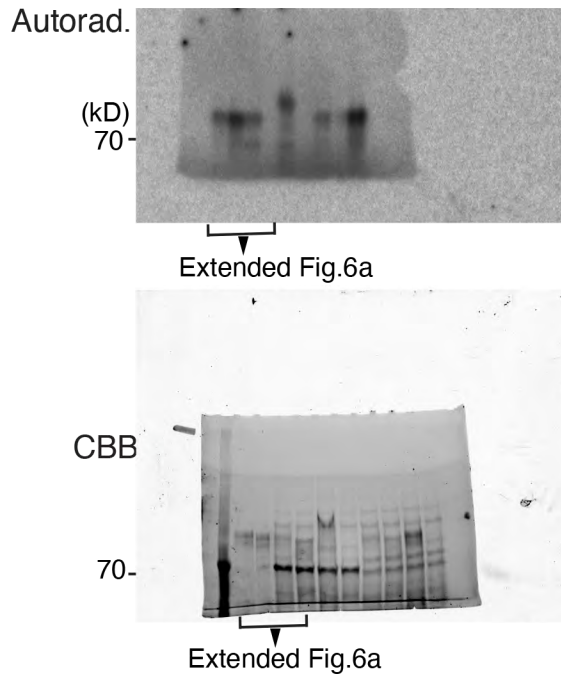
Extended Fig. 5c



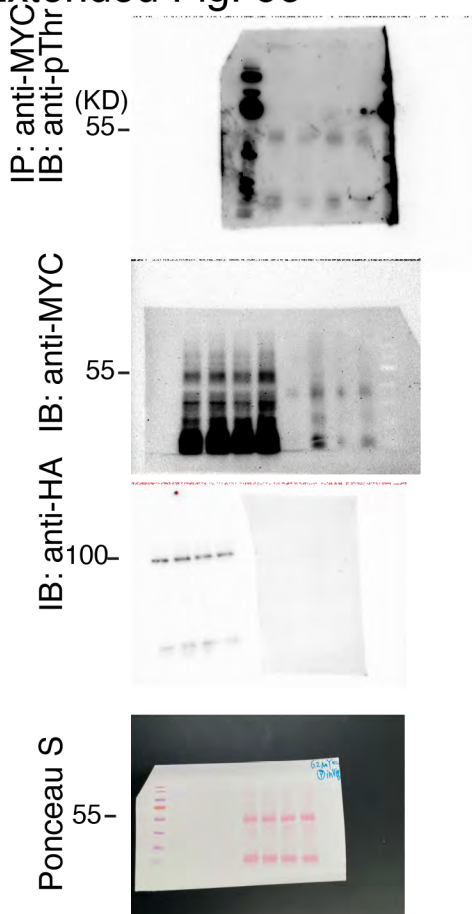
Extended Fig. 6a

Extended Fig. 6b

Extended Fig. 6c

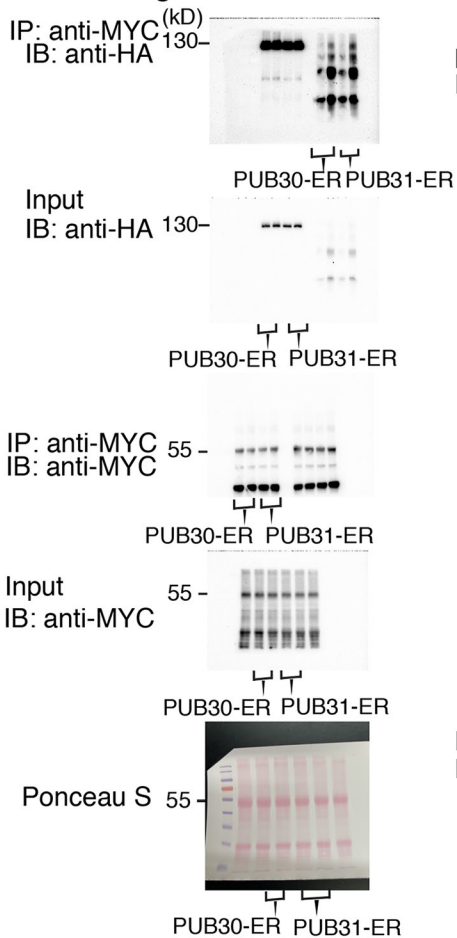


Extended Fig. 6e

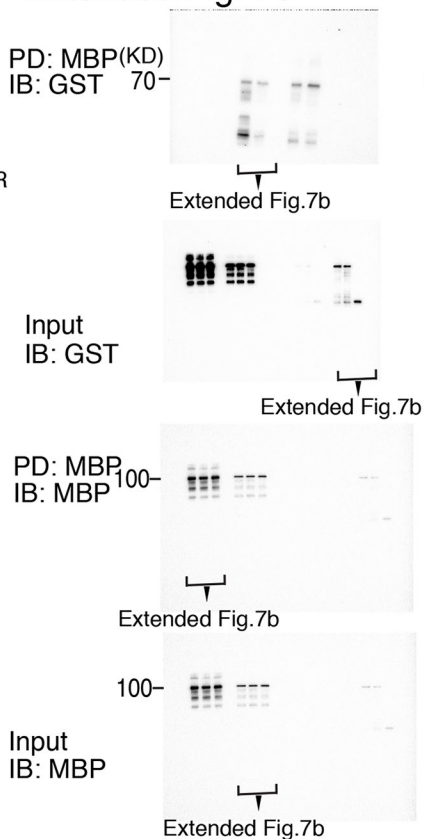




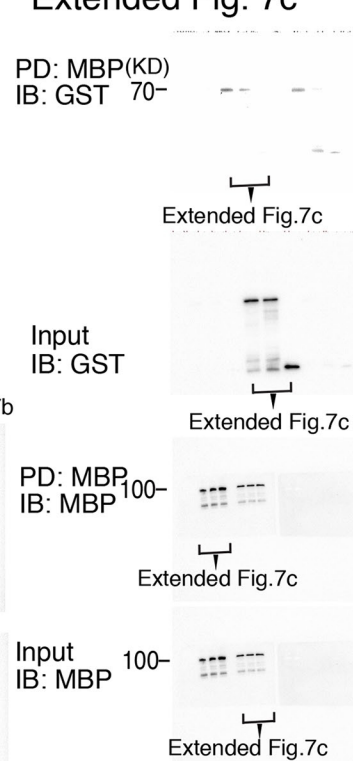
Extended Fig. 7a



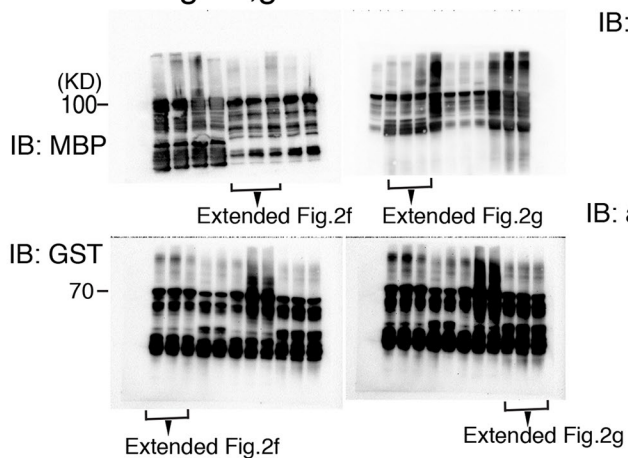
Extended Fig. 7b



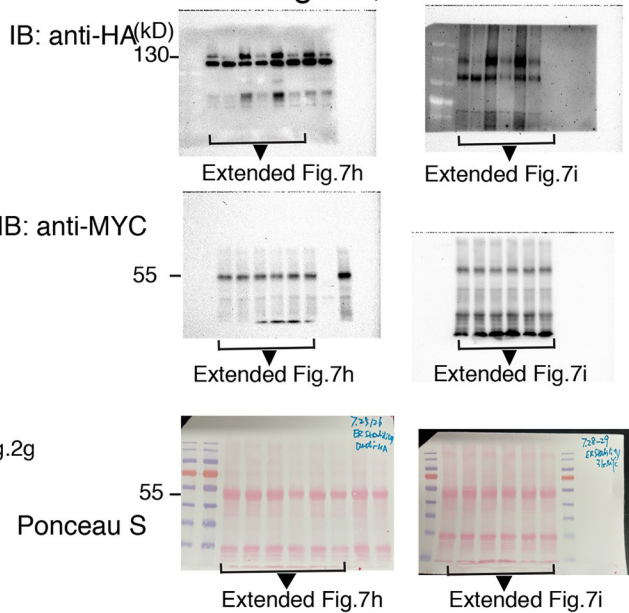
Extended Fig. 7c



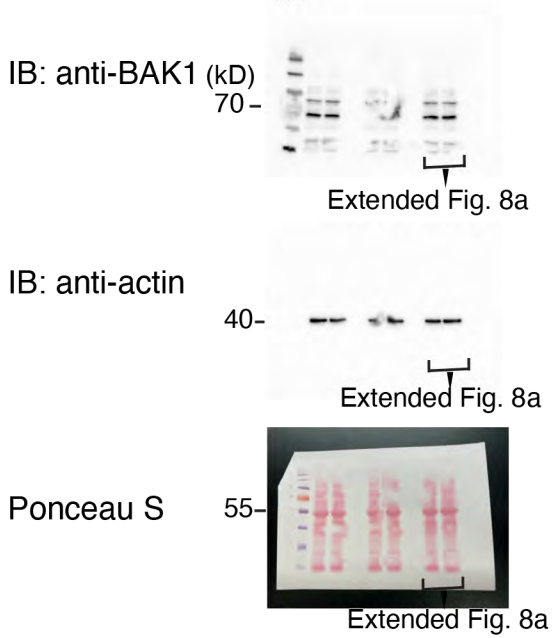
Extended Fig. 7f,g



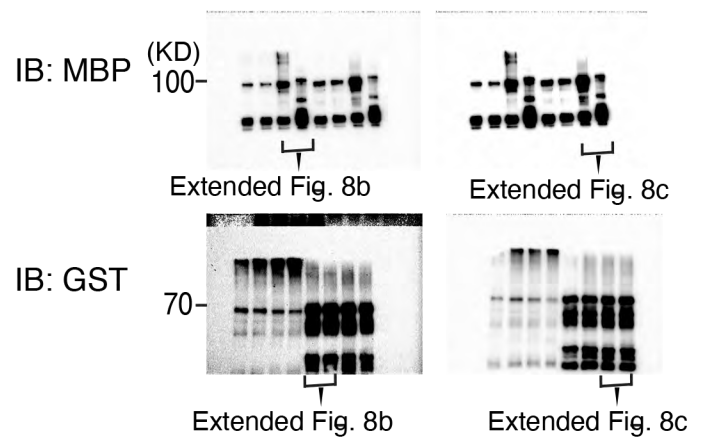
Extended Fig. 7h, i



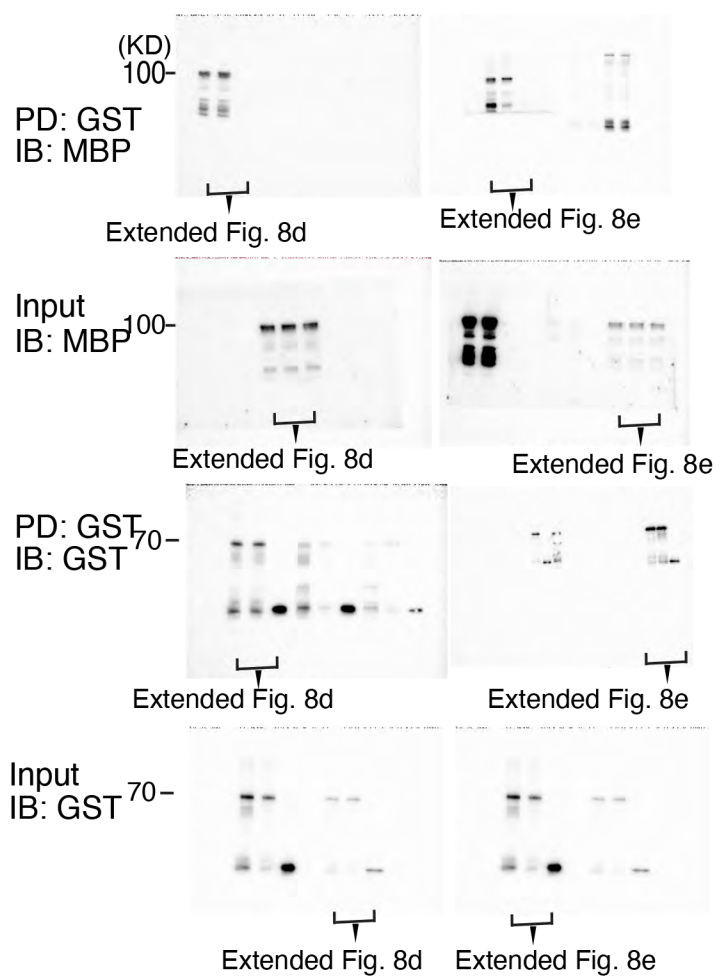
### Extended Fig. 8a



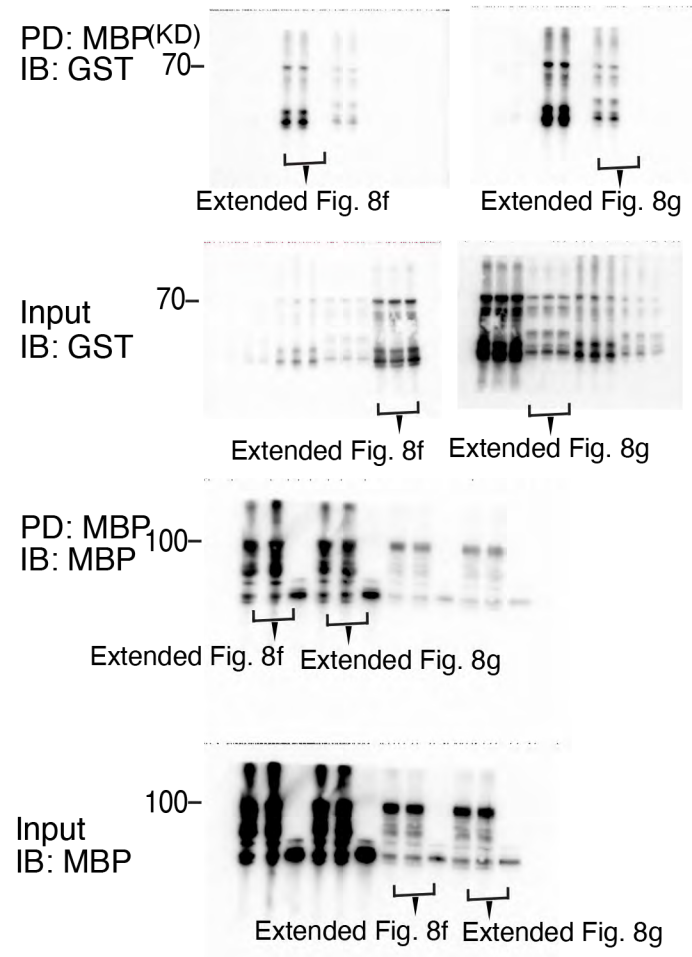
### Extended Fig. 8b, c



### Extended Fig. 8d, e



### Extended Fig. 8f, g



Extended Fig. 9a

Extended Fig. 9b

