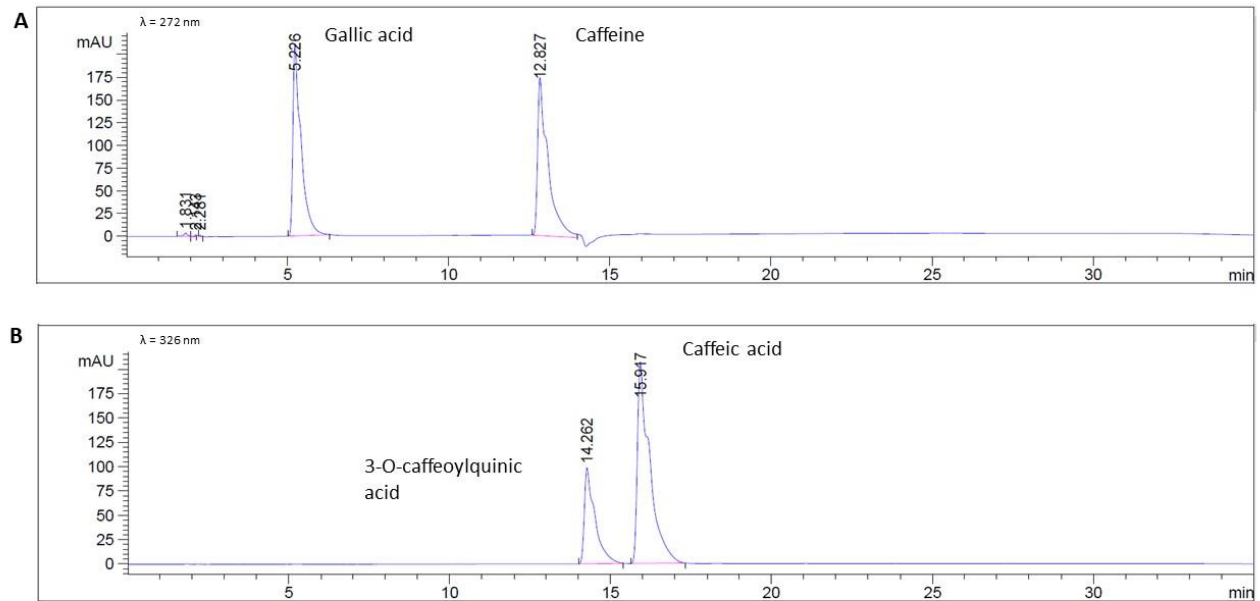
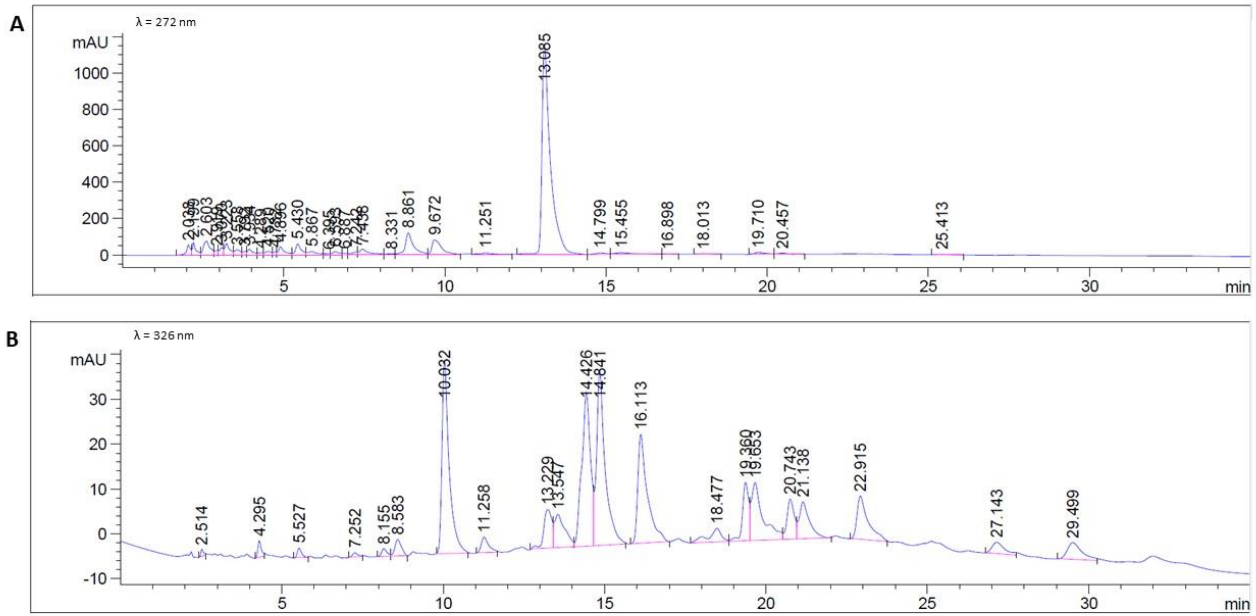


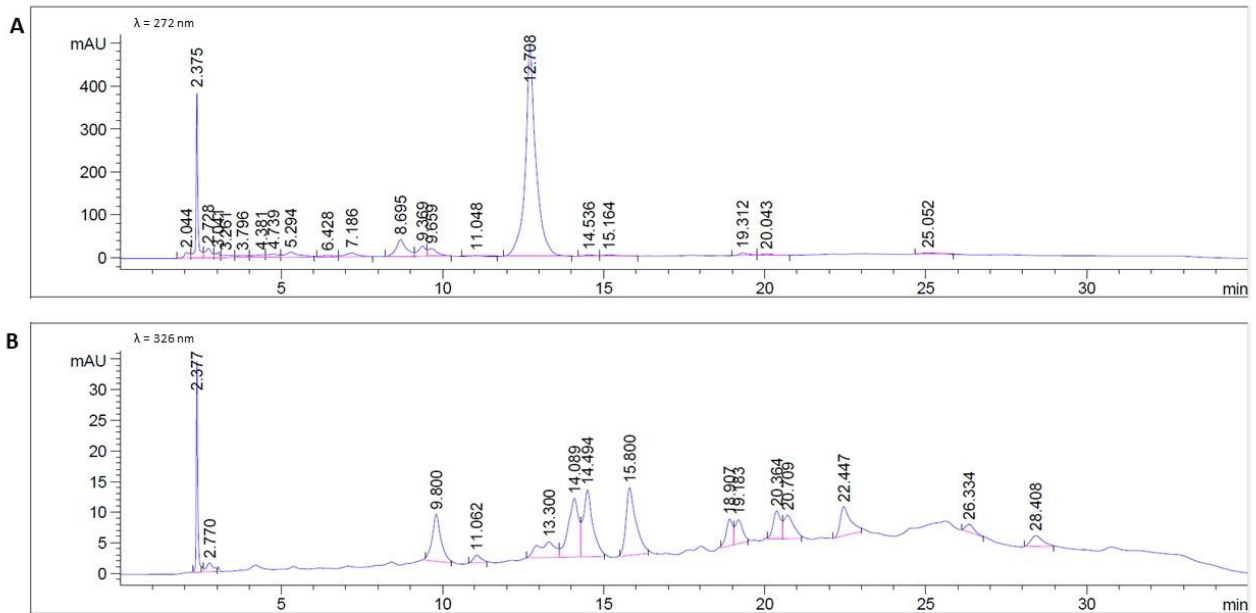
Supplementary Material



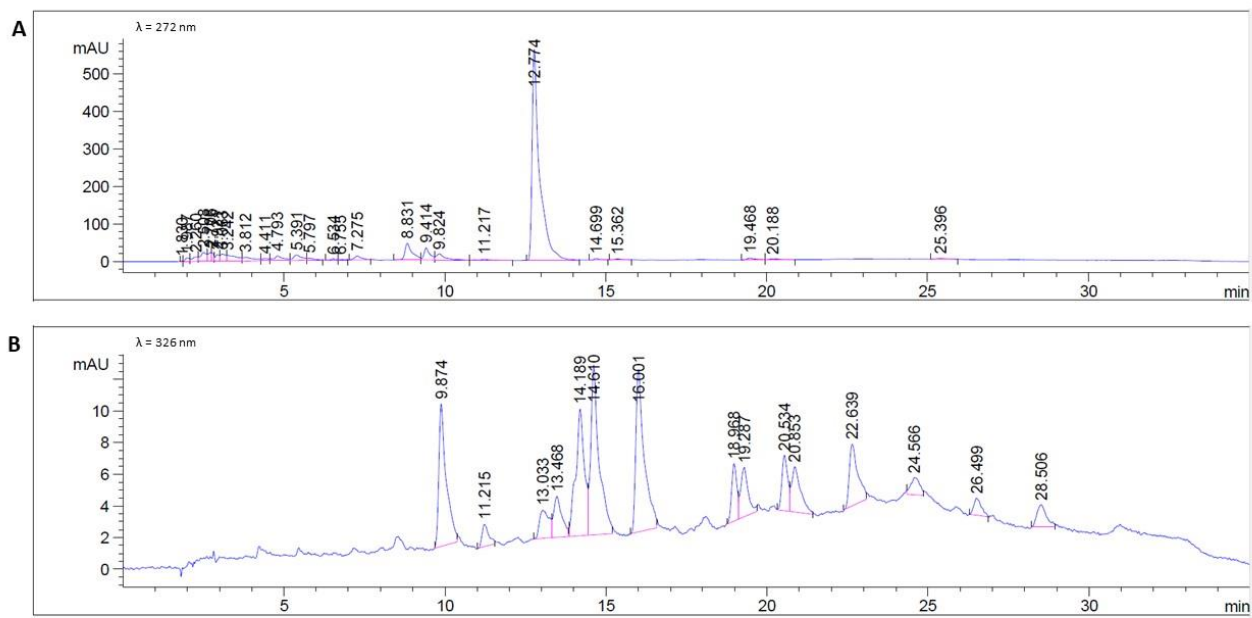
Supplementary Figure 1. Chromatograms of the standards and peak identification at (A) $\lambda = 272$ nm and (B) $\lambda = 326$ nm.



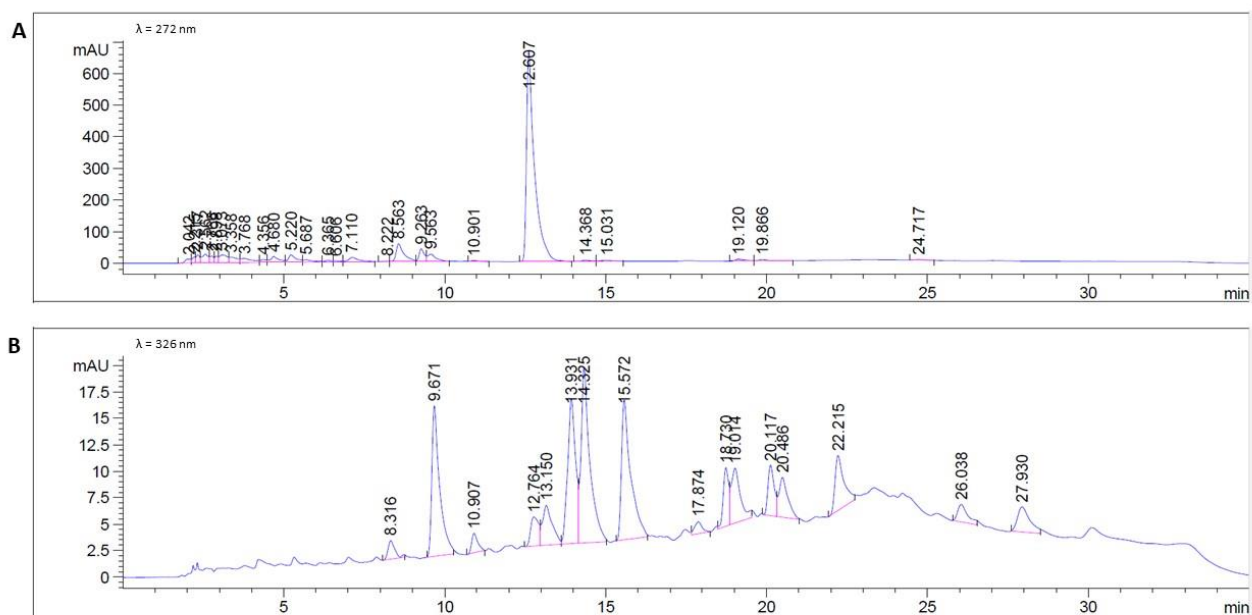
Supplementary Figure 2. Chromatograms of the aqueous extract at (A) $\lambda = 272 \text{ nm}$ and (B) $\lambda = 326 \text{ nm}$.



Supplementary Figure 3. Chromatograms of the ethanolic extract at (A) $\lambda = 272 \text{ nm}$ and (B) $\lambda = 326 \text{ nm}$.



Supplementary Figure 4. Chromatograms of the Bet:Teg 60% extract at (A) $\lambda = 272 \text{ nm}$ and (B) $\lambda = 326 \text{ nm}$.



Supplementary Figure 5. Chromatograms of the Chol:Prop 50% extract at (A) $\lambda = 272 \text{ nm}$ and (B) $\lambda = 326 \text{ nm}$.