

**The implementation of a risk-based assessment approach by the South African Health Products
Authority (SAHPRA)**

Pharmaceutical Medicine

Lerato Moeti^{1,2}, Madira Litedu¹, Jacques Joubert²

¹South African Health Products Regulatory Authority (SAHPRA), Pretoria, South Africa.

²University of the Western Cape, School of Pharmacy, Cape Town, South Africa.

Corresponding Author: jjoubert@uwc.ac.za

School of Pharmacy, University of the Western Cape, Robert Sobukwe Road, Bellville 7535, Cape
Town, South Africa.

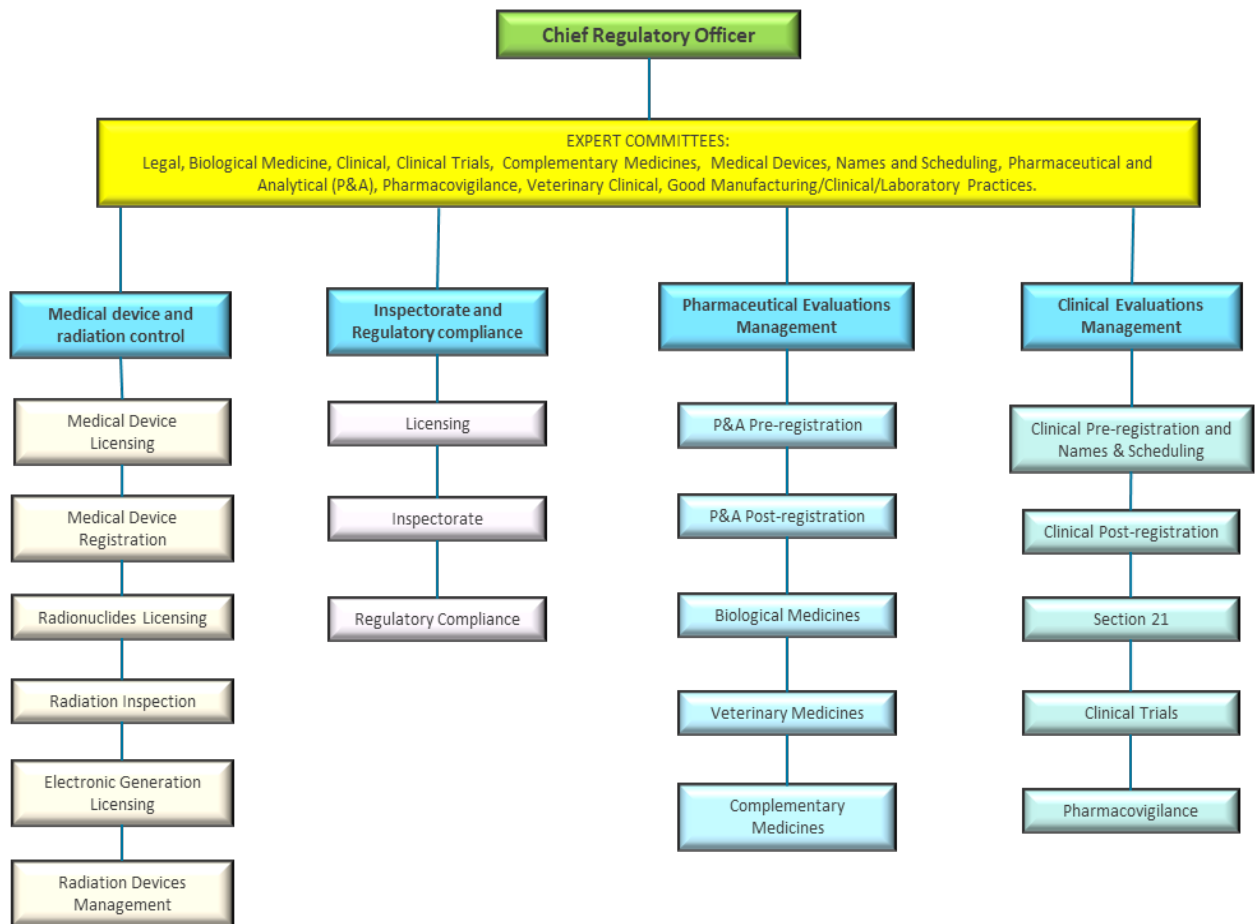


Figure S1b: The SAHPRA structure within the office of the Chief Regulatory Officer (CRO).