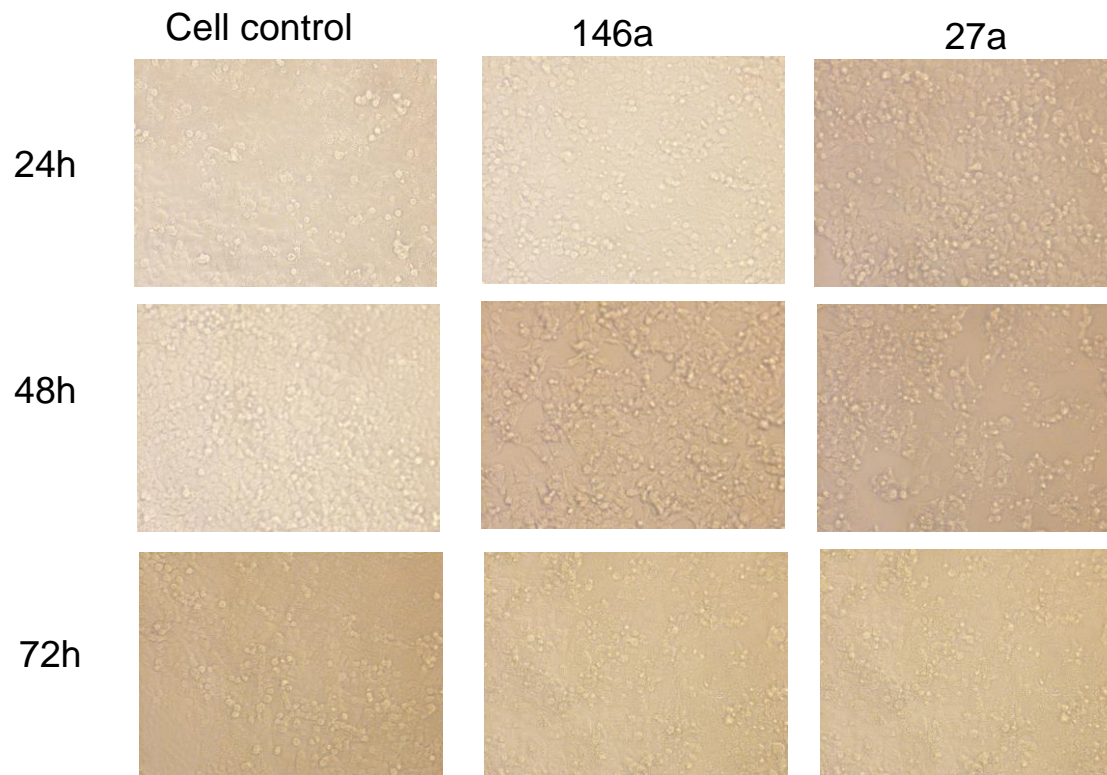


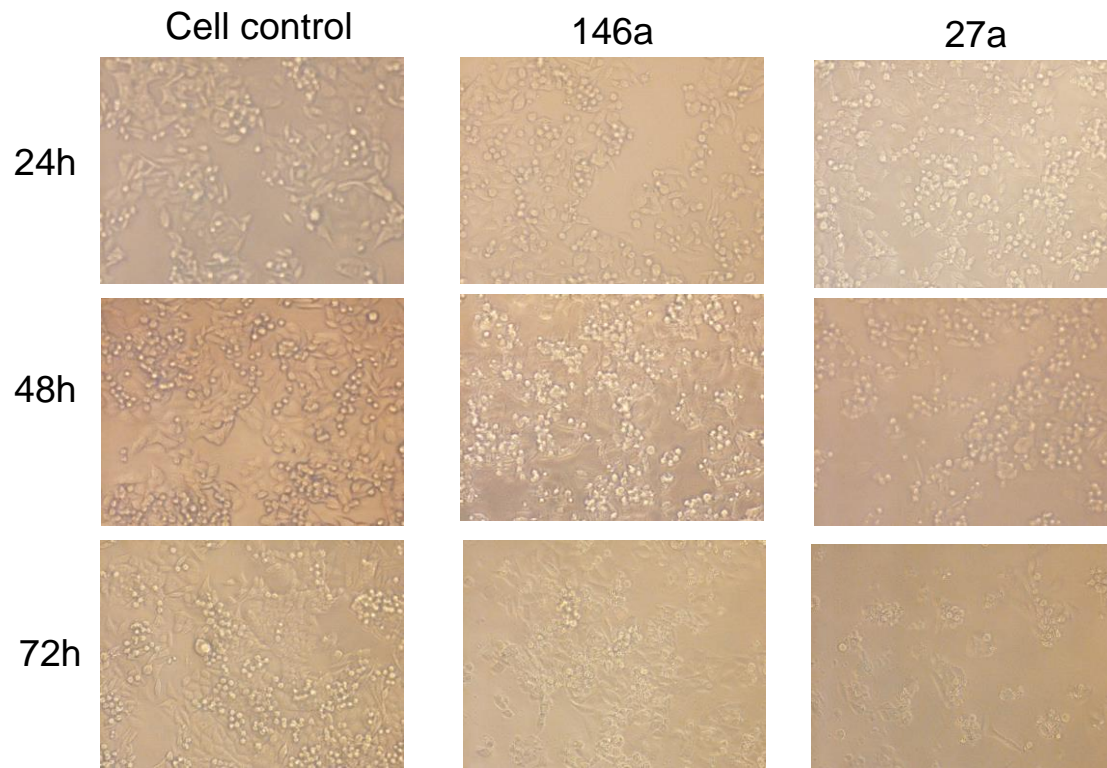
HCT116, SW480 and Caca0 cells were originally transfected with miR-146a and miR-27a, and the quantifications of transfection with miR-27a in the 3 cell lines were used for the generation of Fig.4A.

Fig.4B

HCT116细胞



SW480细胞



CACO2细胞

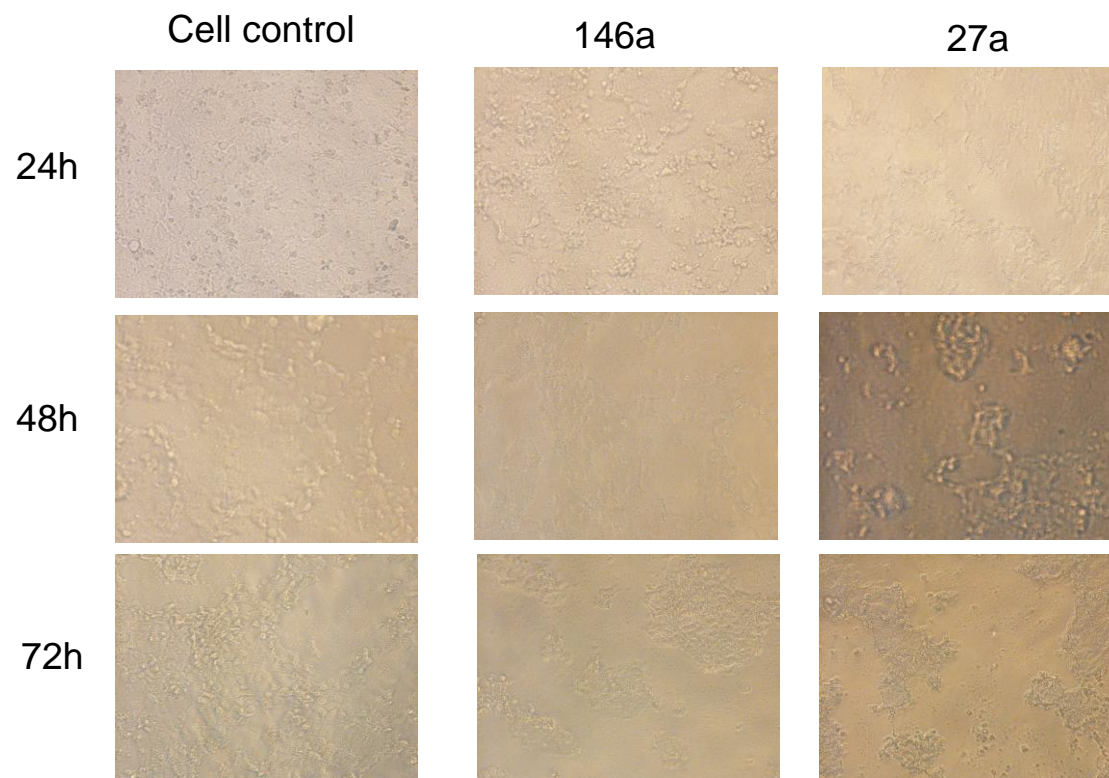
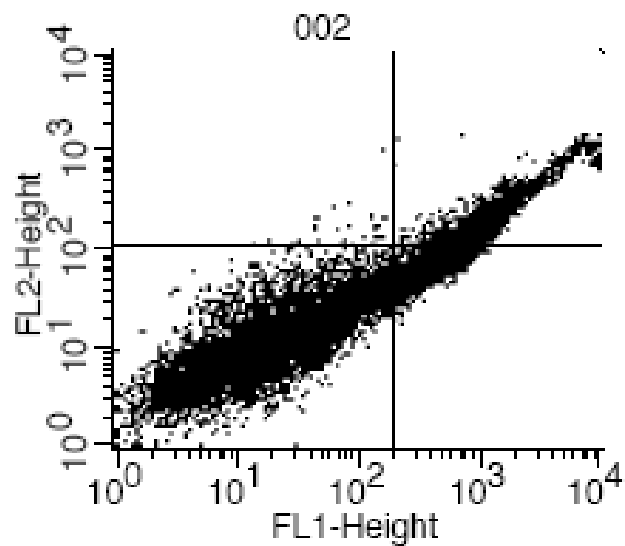
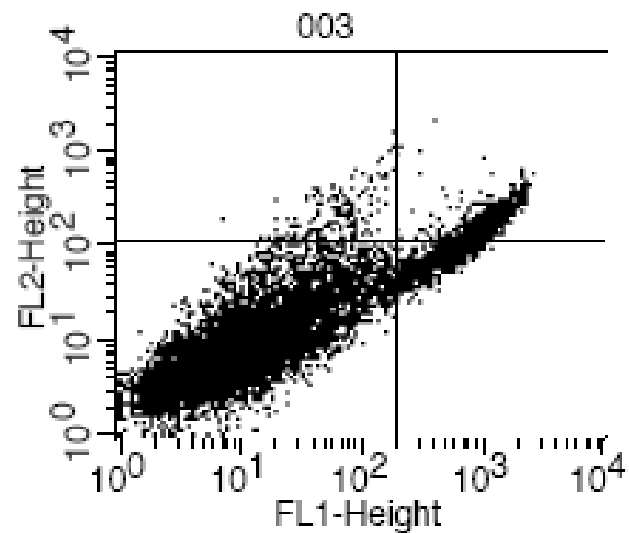


Fig.4C



File: 002

| Quad | % Gated | % Total |
|------|---------|---------|
| UL | 0.35 | 0.35 |
| UR | 22.20 | 22.20 |
| LL | 61.25 | 61.25 |
| LR | 16.20 | 16.20 |



File: 003

| Quad | % Gated | % Total |
|------|---------|---------|
| UL | 1.50 | 1.50 |
| UR | 8.55 | 8.55 |
| LL | 82.38 | 82.38 |
| LR | 7.57 | 7.57 |

HCT116 cells transfection with 27a -24h