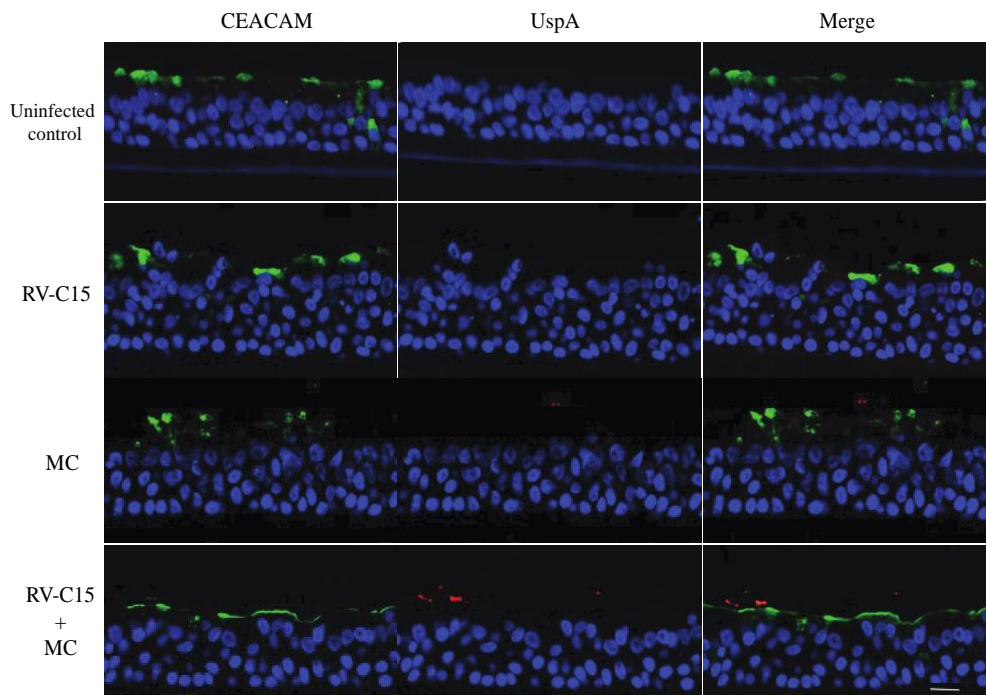


(A)



(B)

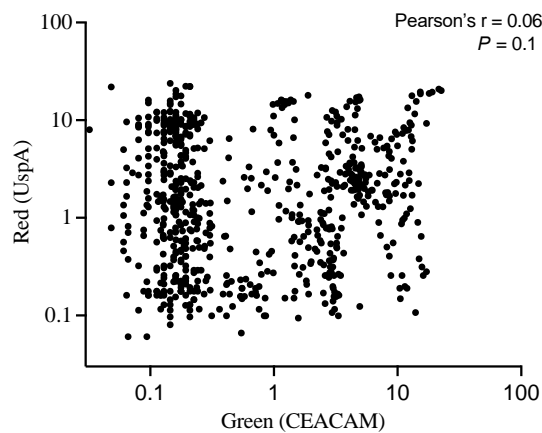
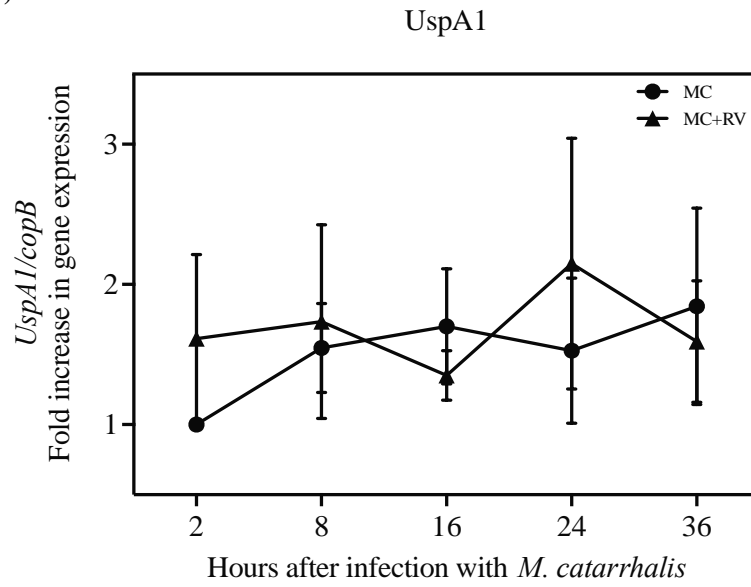


Fig. S1: (A) ALI cultures infected with RV-C15 for 2 hours, *M. catarrhalis* or both for 48 hours and were labeled with rabbit pan anti-CEACAM antibodies (green) and mouse anti-UspA (red) antibodies. DNA was stained with DAPI (blue). Representative histological sections were imaged using a 20× objective from at least 3 independent experiments. Scale bar = 20 μ m. (B) Representative scatterplot showing distribution of CEACAM and UspA signals in the RV-C15+MC infected epithelium from (A) ($n = 5$; Pearson's correlation range = -0.09 to 0.14; P value range = 0.1 to 0.8).

(A)



(B)

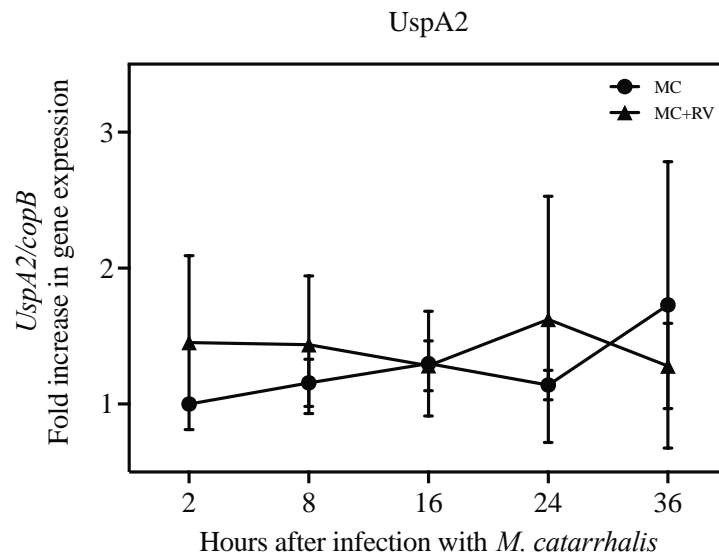


Figure S2: UspA expression in infected ALI cultures

Fully differentiated ALI cultures were infected with RV-C15 for 16 hours, followed by *M. catarrhalis* for 2 – 36 hours. The expression of (A) *UspA1* and (B) *UspA2* was measured by qPCR using specific primers given in table 1.