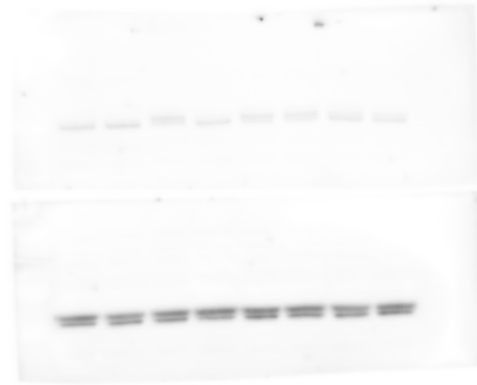
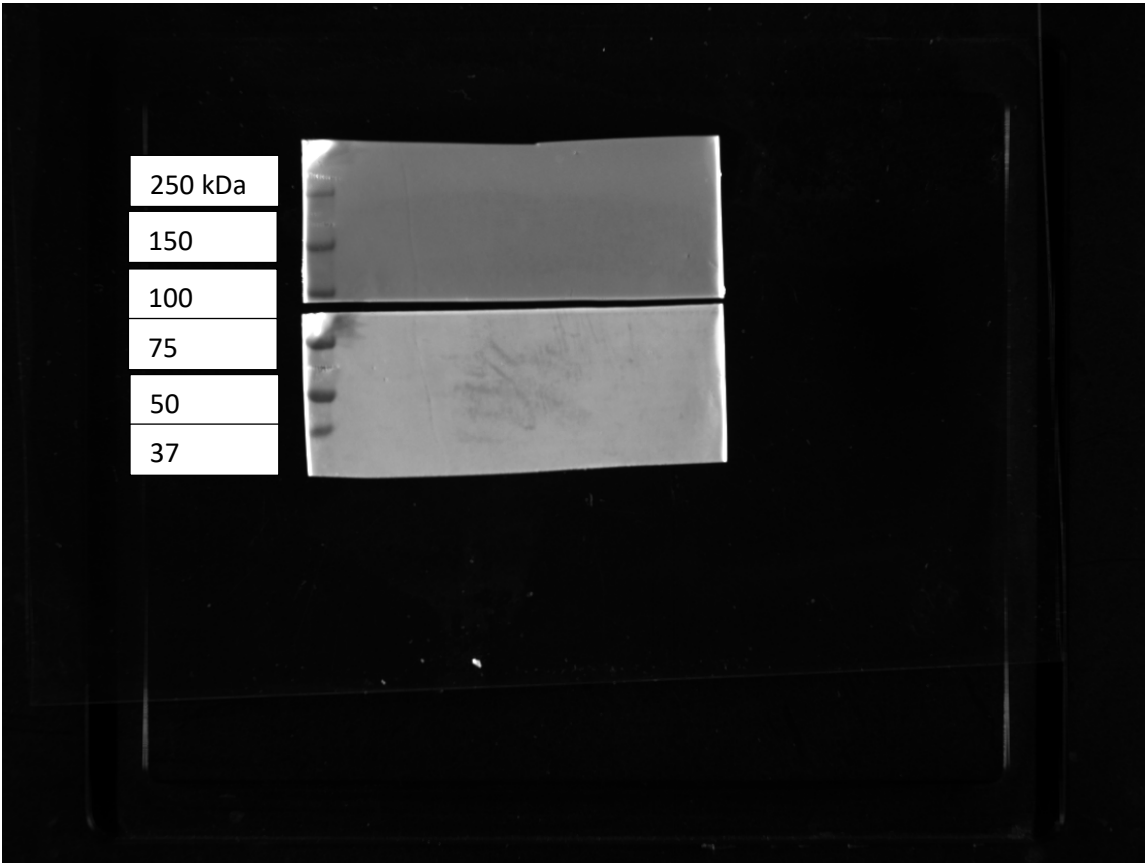


Replicate 1 – full chemiluminescence image

NOTE: in all images, the blot membrane is cut in half because the high molecular weight section had to be stained with a much higher concentration of the secondary antibody to be visible. No part of the membrane was removed.



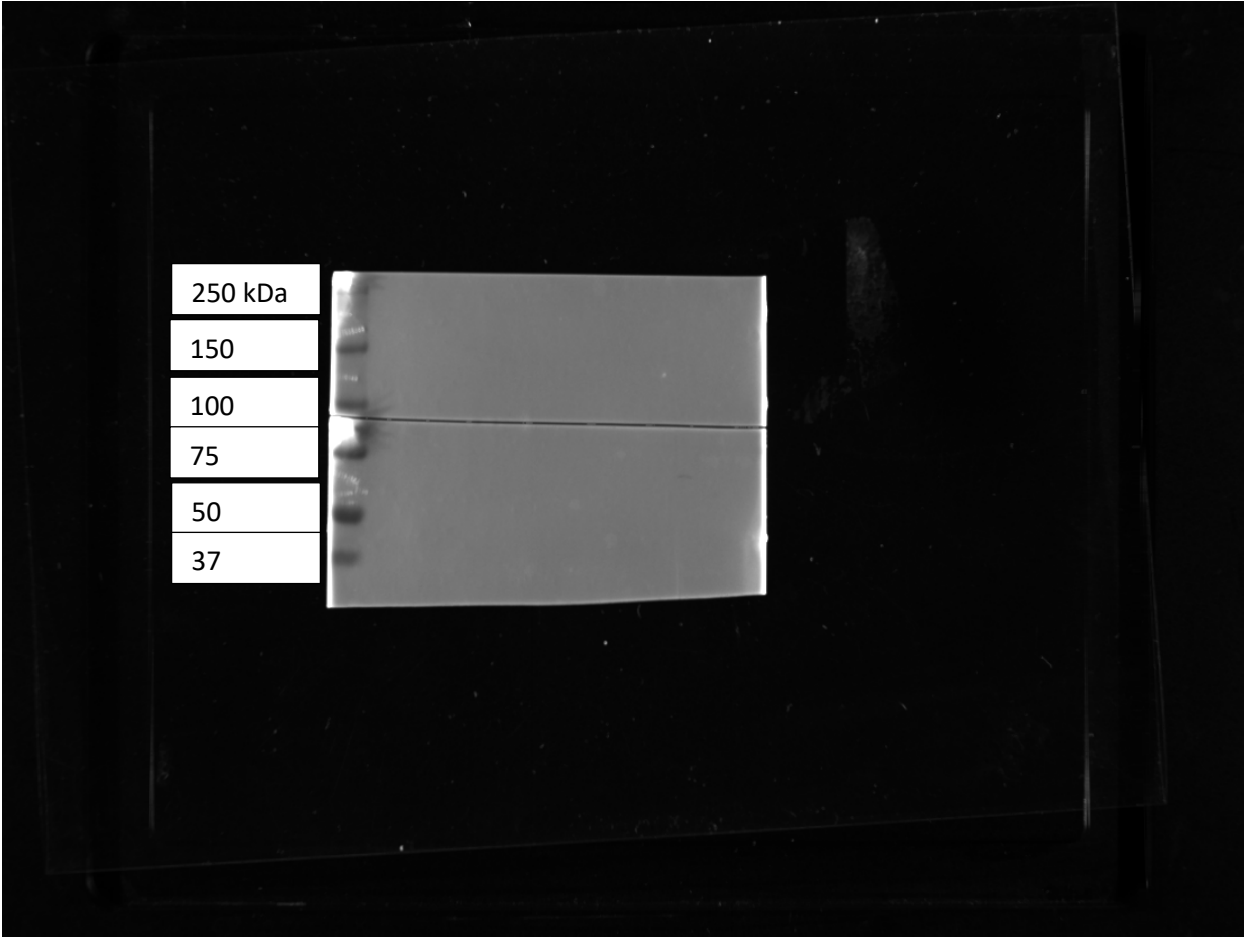
Replicate 1 – visible light marker image (for ladder)



Replicate 2 – Chemiluminescence image



Replicate 2 – Visible light image



Replicate 3 – chemiluminescence image:

For this replicate, the actin loading control appears inconsistent due to a user error (gel overrun)



Replicate 3 – Visible light image

