

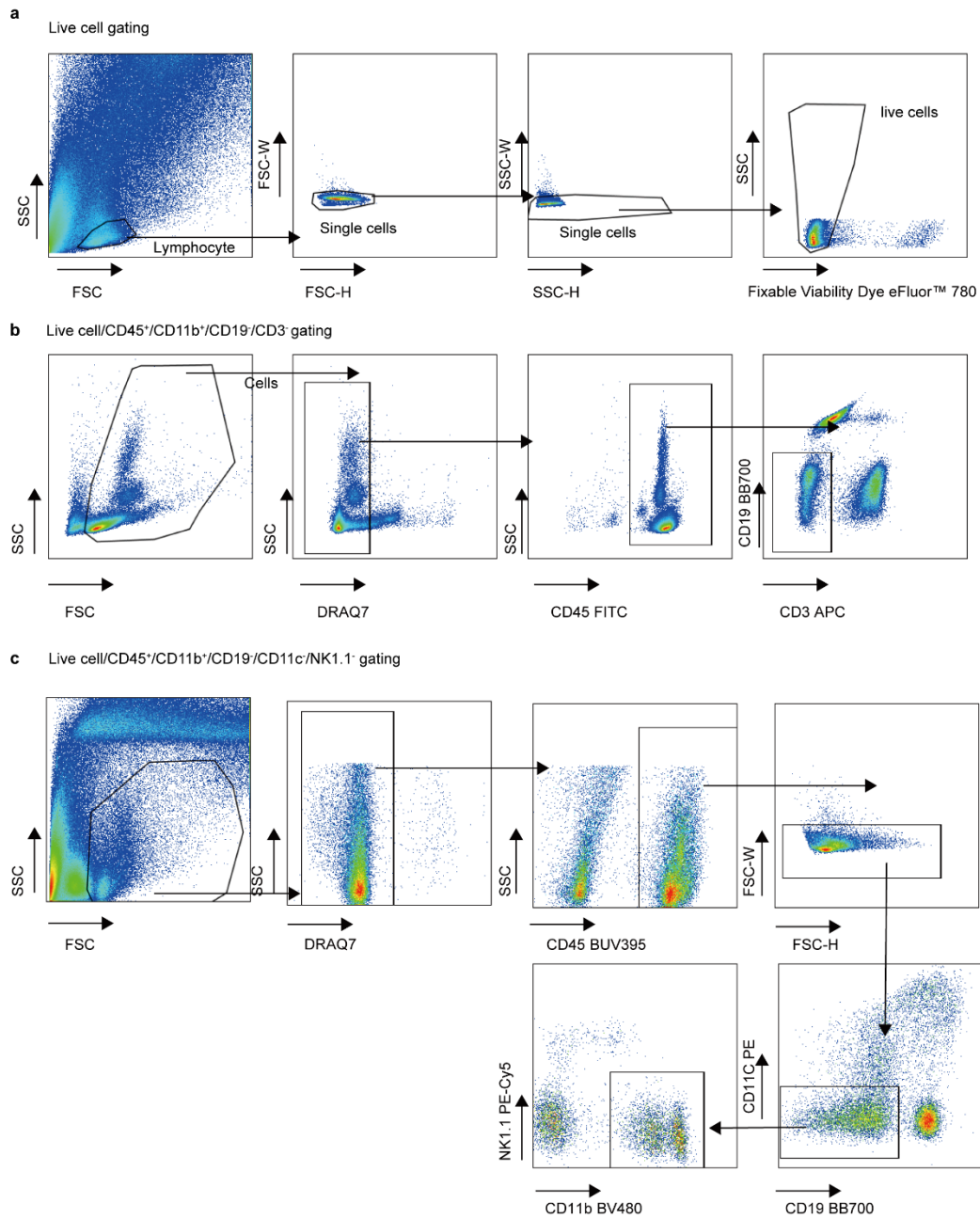
**Supplementary information**

---

**Dendritic cells direct circadian anti-tumour immune responses**

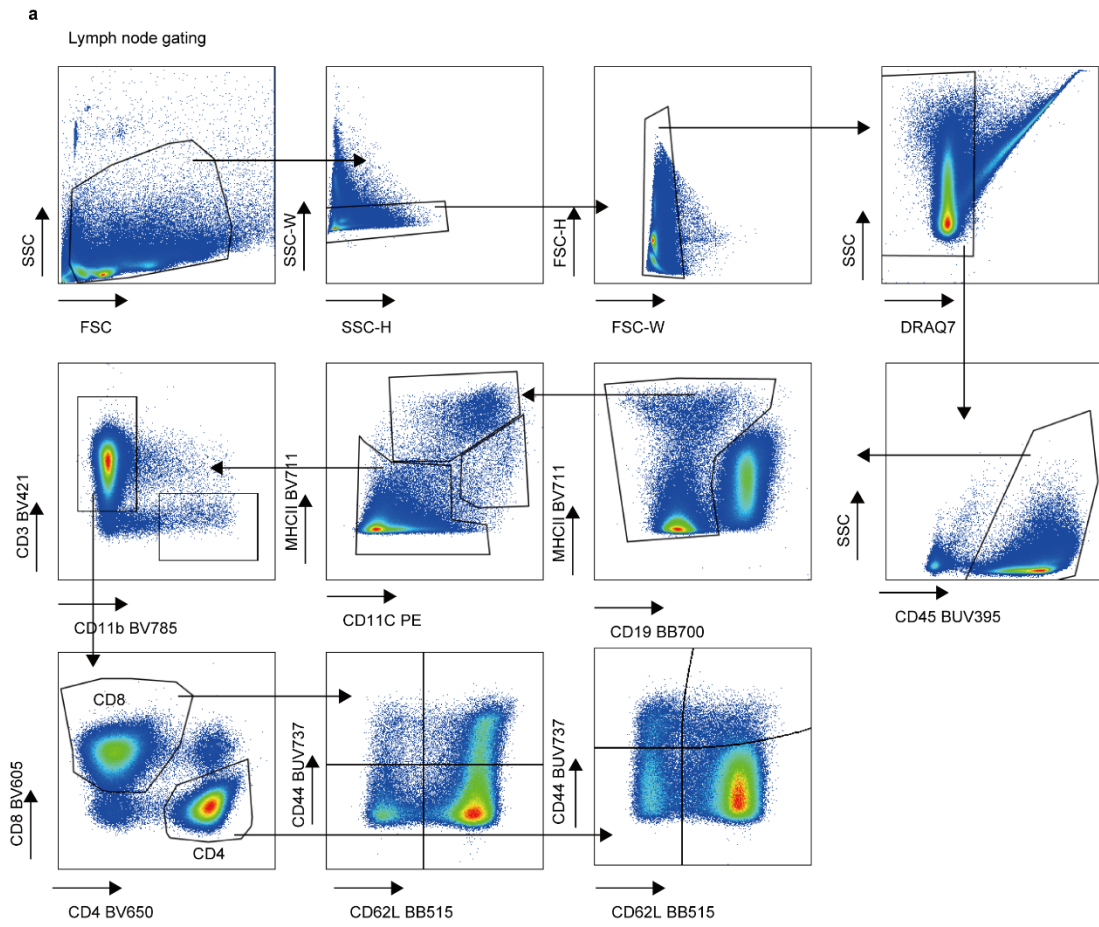
---

In the format provided by the authors and unedited



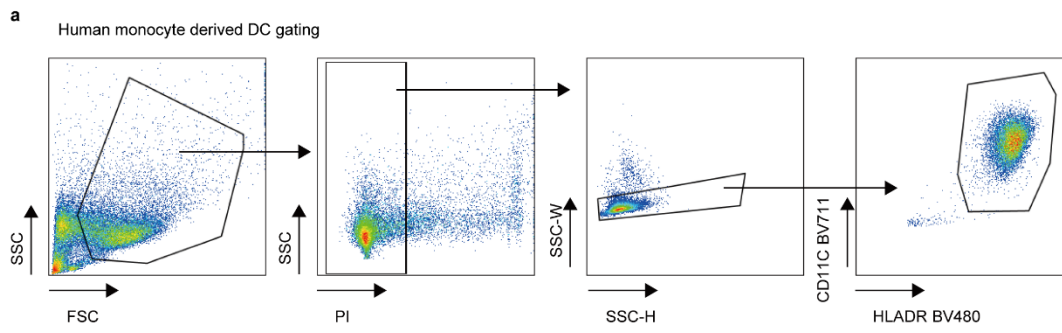
### Supplementary Information Figure 1

(a) Gating strategy of CD8 and CD4 T cell in tumor, relevant to Fig 1f, Extended Fig 2b. (b-c) Gating strategy relevant to Extended Fig e-i.



## Supplementary Information Figure 2

(a) Gating strategy of cells in lymph node, relevant to Fig 2, 4-5, Extended Fig 3-4,10.



### Supplementary Information Figure 3

(a) Gating strategy of human monocyte derived dendritic cell, relevant to Fig 5g.