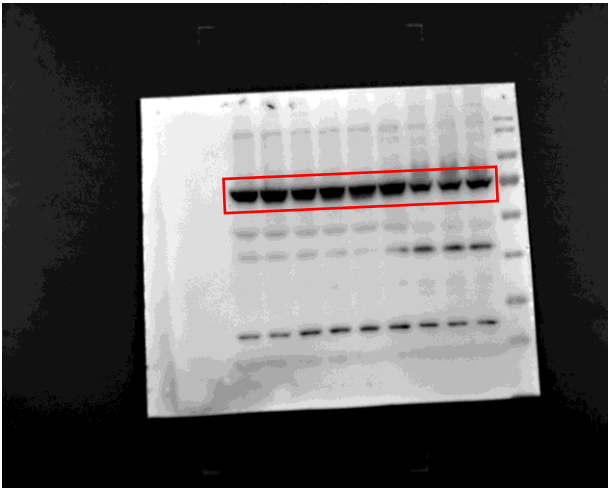


Fig. S1

IB: SIK3-S



IB: ACTB

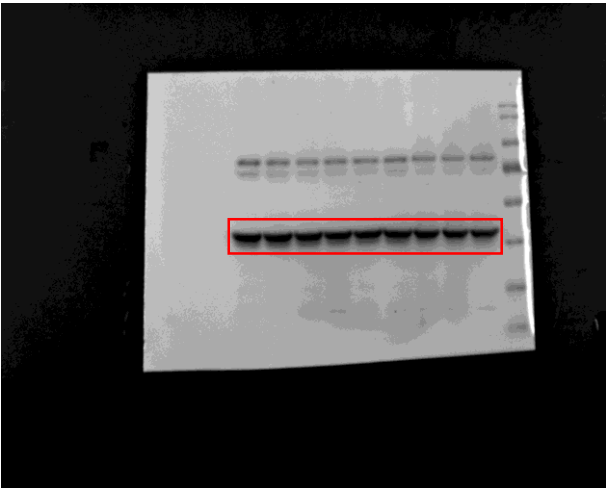
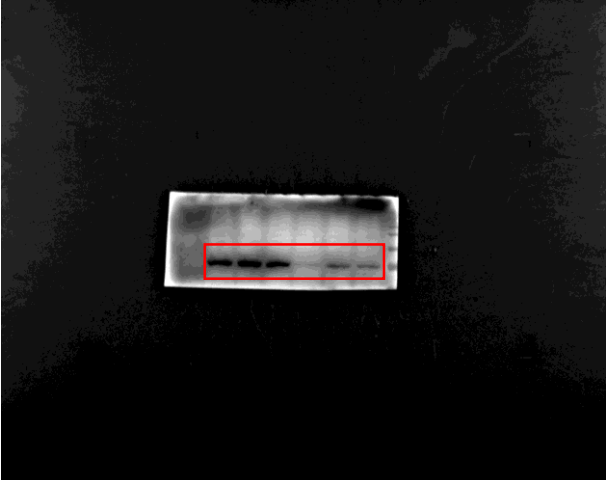


Fig. S1 Uncropped western blot images for Fig. 1g . Red boxes indicate cropped regions.

Fig. S2

IB: SIK3-S



IB: ACTB

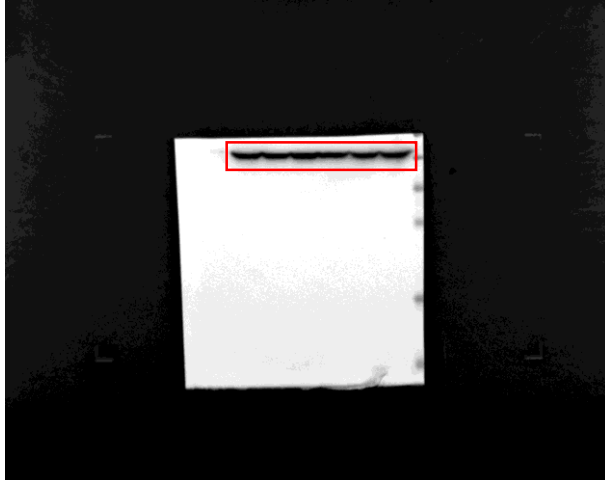


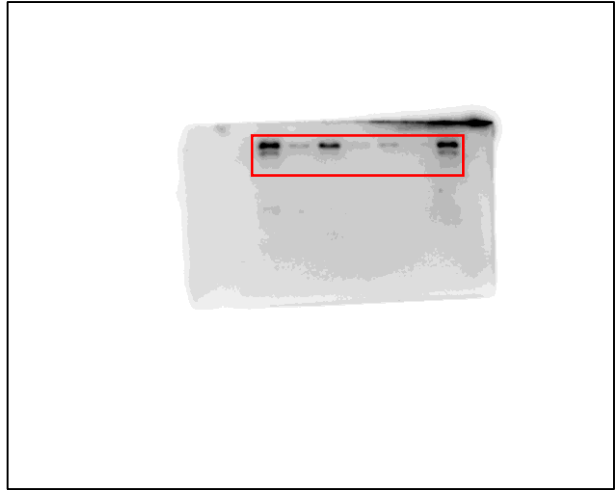
Fig. S2 Uncropped western blot images for Fig. 2a . Red boxes indicate cropped regions.

Fig. S3

IB: HA (RfxCas13d)



IB: HA (NeuN)



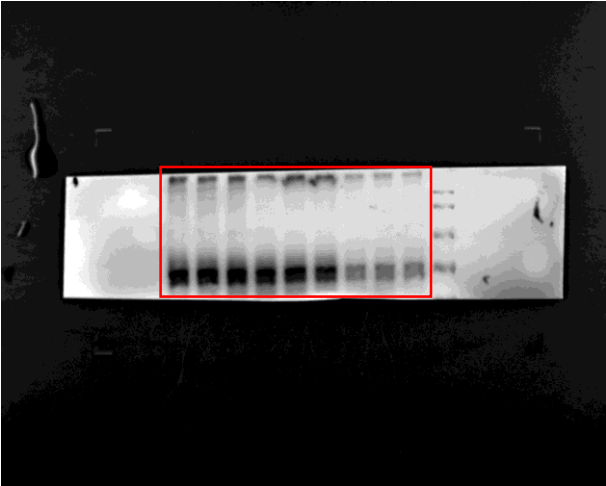
IB: ACTB



Fig. S3 Uncropped western blot images for Fig. 2f/Response Fig. 8c (First revision)/ Response Fig. 3a (Second revision). Red boxes indicate cropped regions.

Fig. S4

IB: MAP2



IB: ACTB

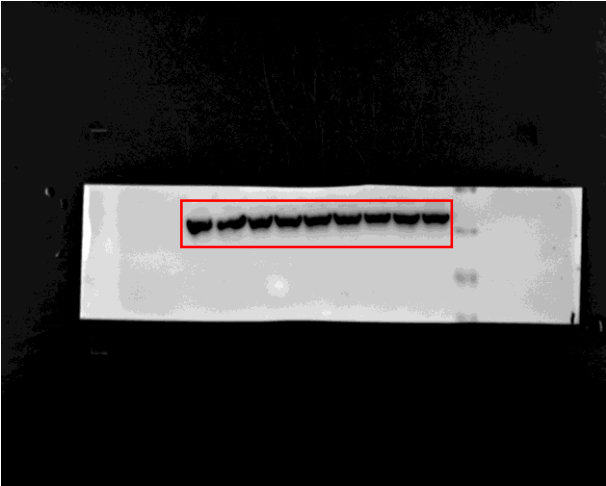
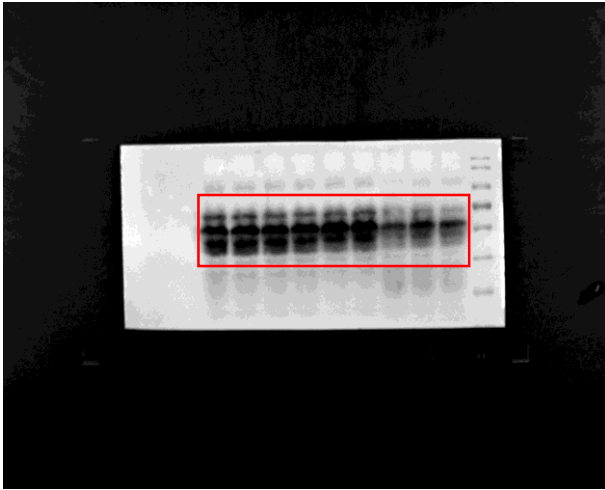


Fig. S4 Uncropped western blot images for Fig. 2p. Red boxes indicate cropped regions.

Fig. S5

IB: Tau



IB: ACTB

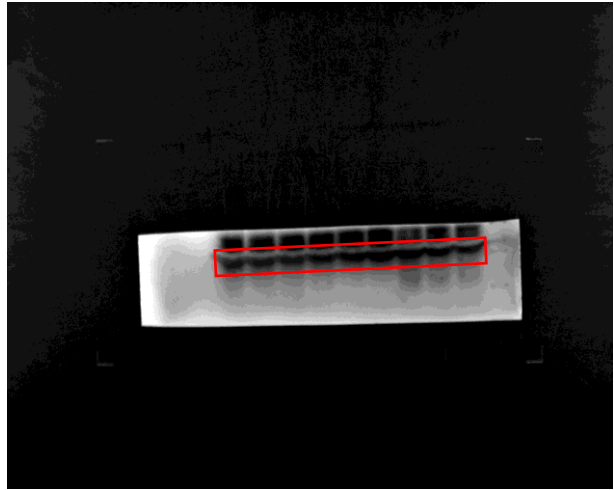
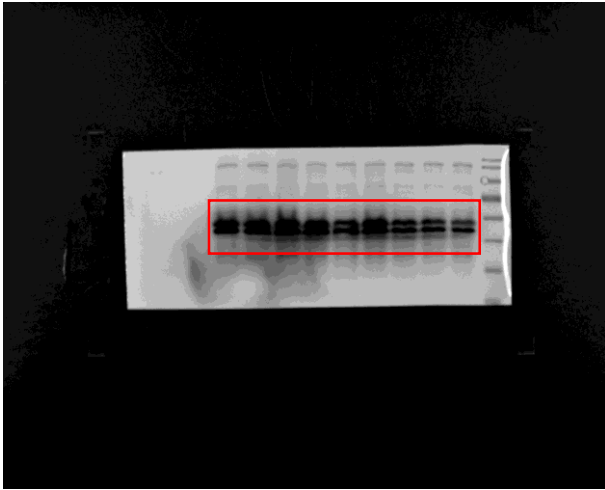


Fig. S5 Uncropped western blot images for Fig. 2q. Red boxes indicate cropped regions.

Fig. S6

IB: NeuN



IB: GAPDH

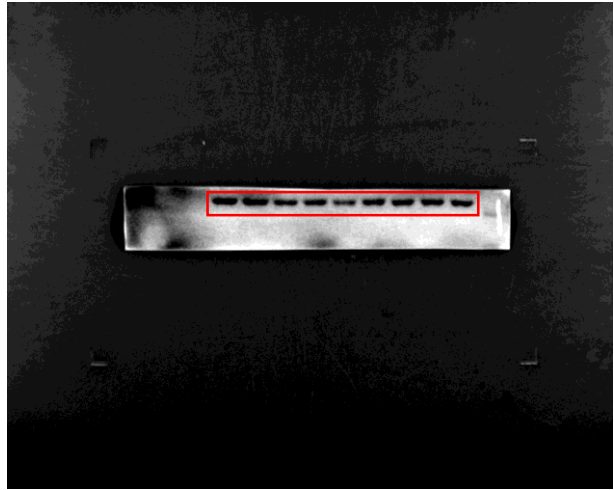
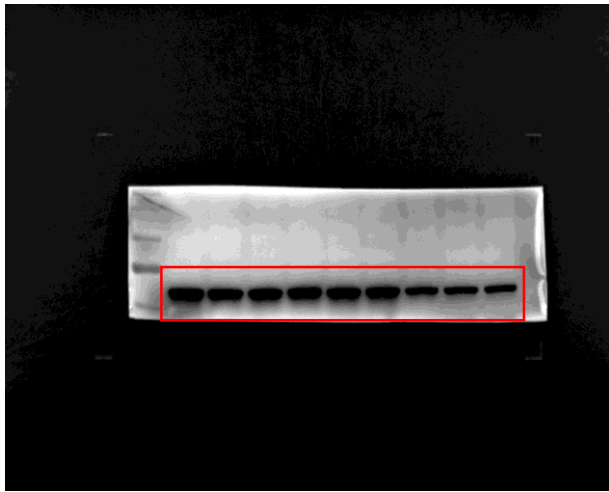


Fig. S6 Uncropped western blot images for Fig 2r. Red boxes indicate cropped regions.

Fig. S7

IB: Flag



IB: ACTB

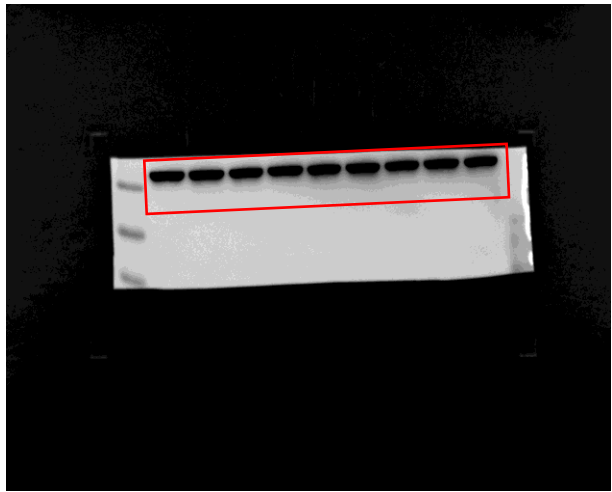


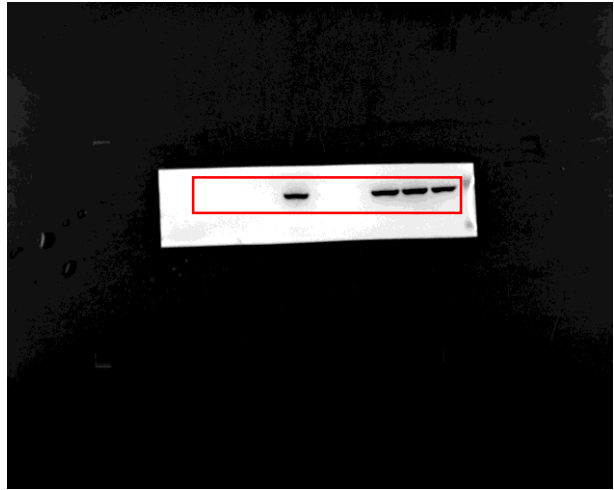
Fig. S7 Uncropped western blot images for Fig. 3e. Red boxes indicate cropped regions.

Fig. S8

IB: HA (RfxCas13d)



IB: Flag (tdTomato)



IB: ACTB

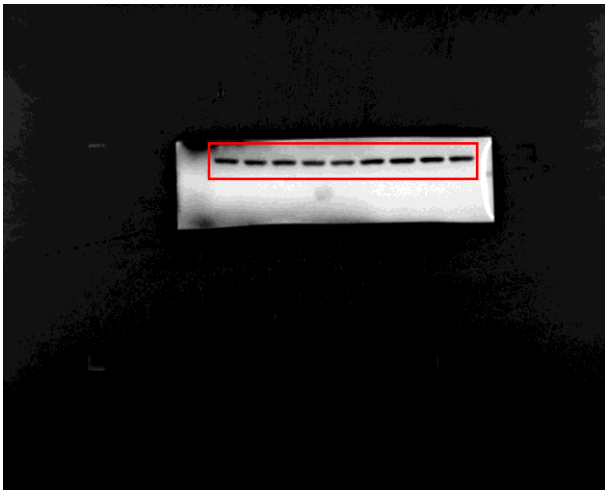
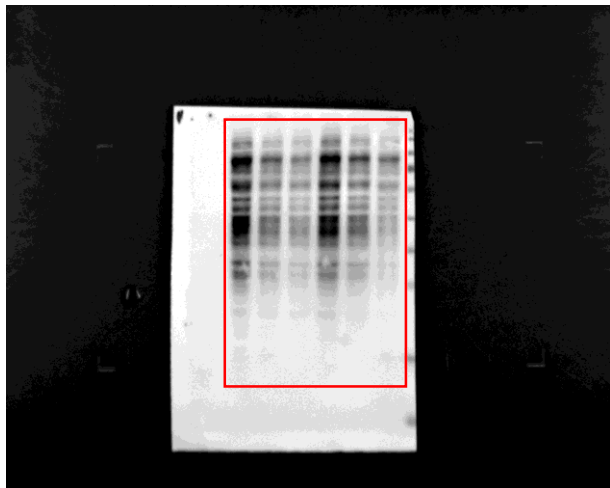


Fig. S8 Uncropped western blot images for Fig. 4a. Red boxes indicate cropped regions.

Fig. S9

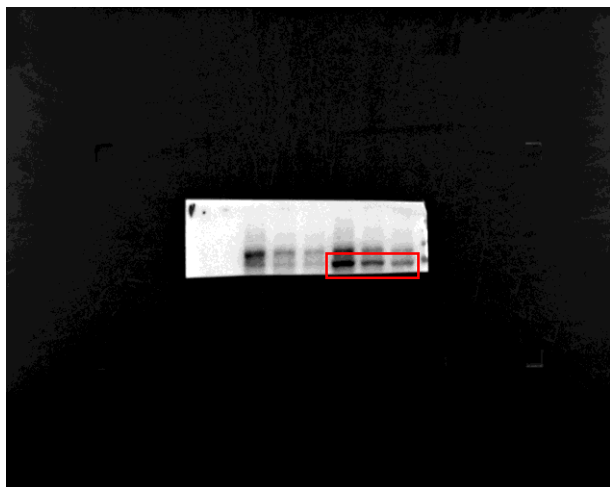
IB: Puromycin



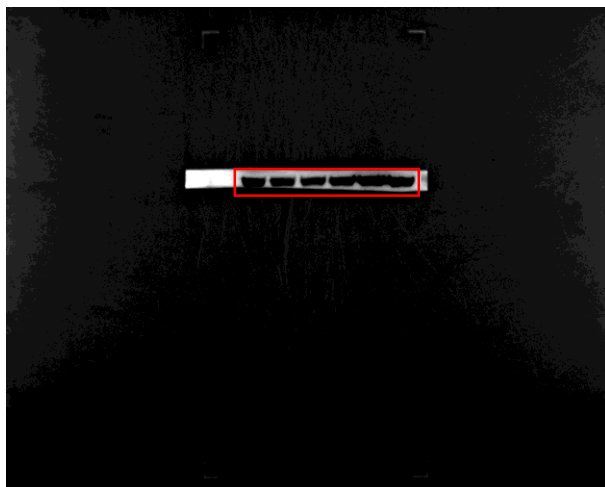
IB: Flag (tdTomato)



IB: HA (SIK3-S)



IB: TUBULIN



IB: GAPDH



Comassie staining

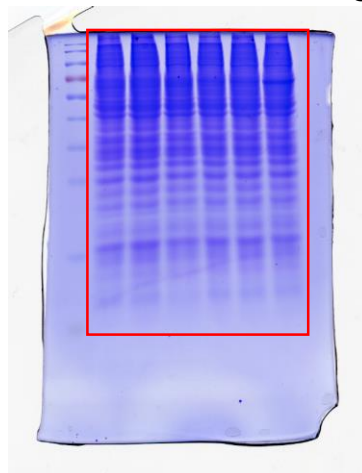
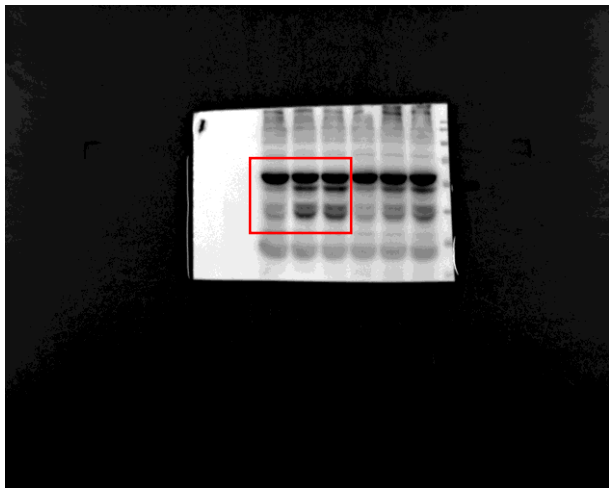


Fig. S9 Uncropped western blot images for Fig. 5c. Red boxes indicate cropped regions.

Fig. S10

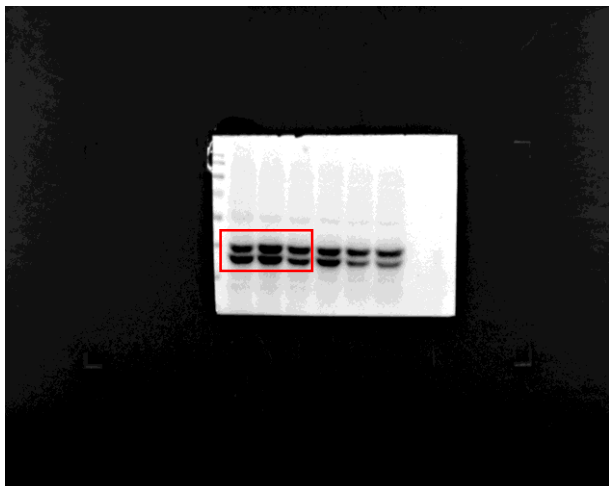
IB: p-JNK



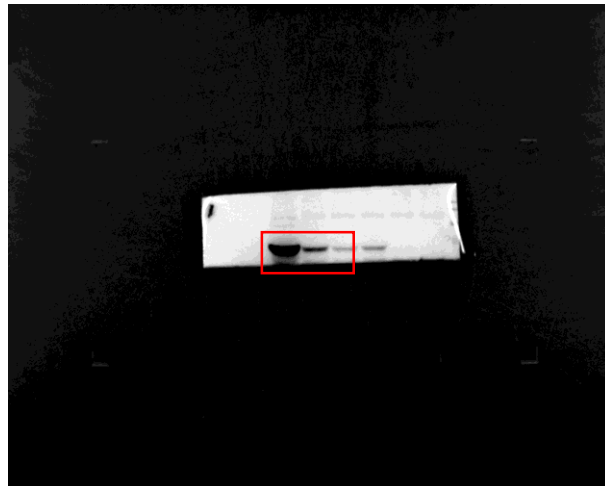
IB: p-p38



IB: p-ERK1/2



IB: Flag (tdTomato)



IB: ACTB

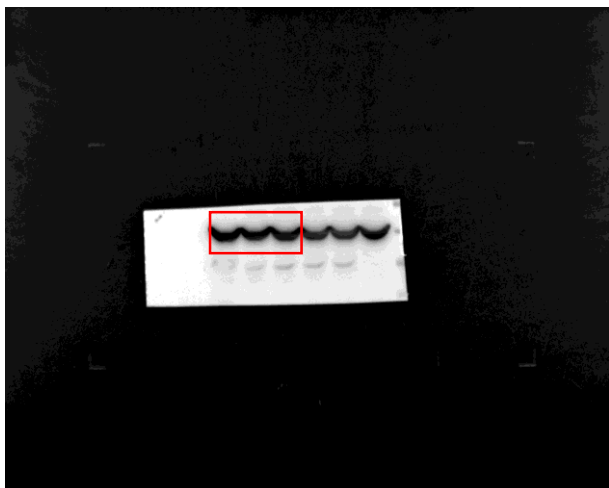
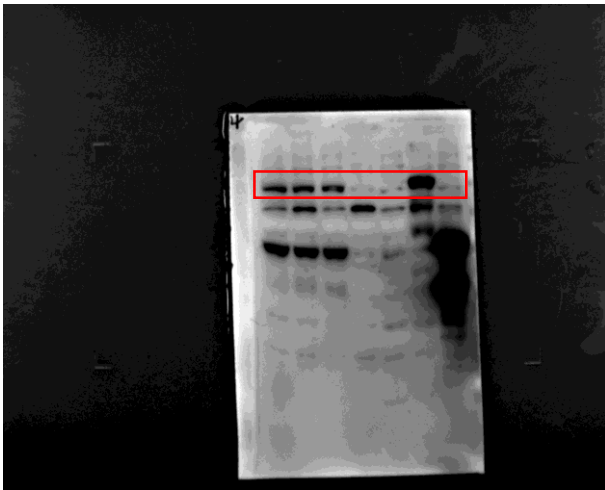


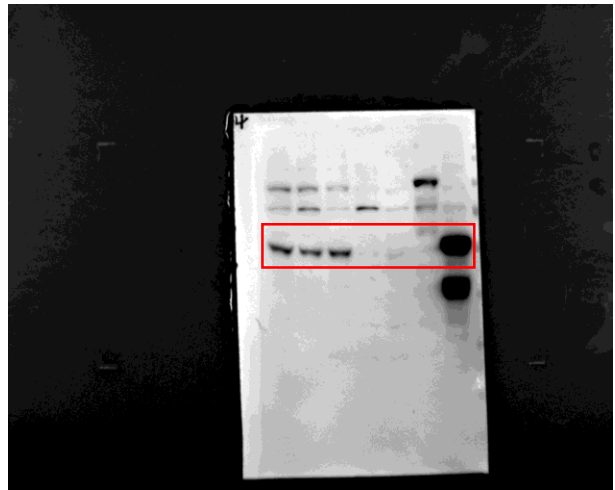
Fig. S10 Uncropped western blot images for Fig. 5h. Red boxes indicate cropped regions.

Fig. S11

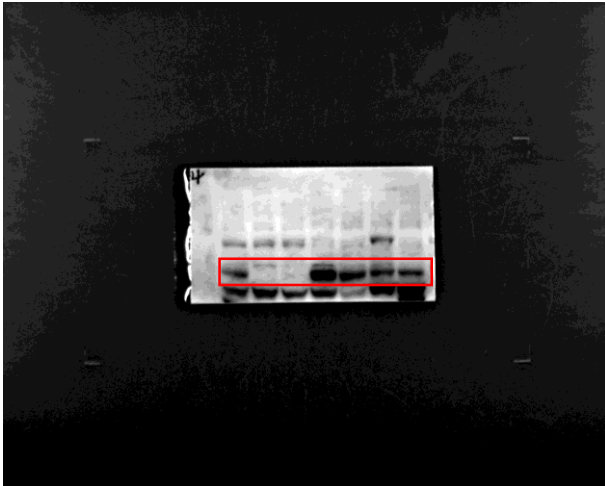
IB: ZAK (ZAK α)



IB: ZAK (ZAK β)



IB: PKR



IB: ACTB

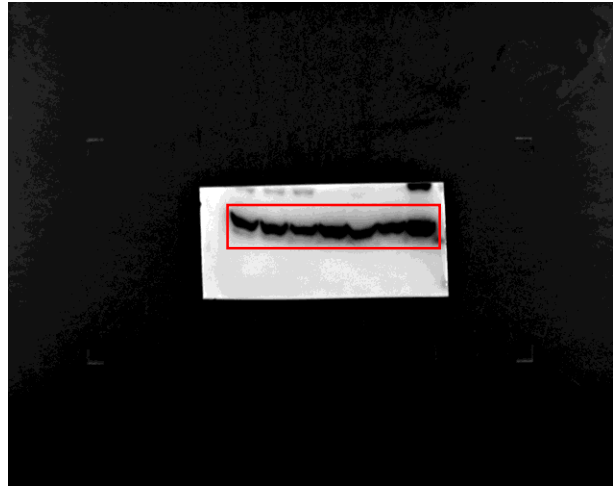
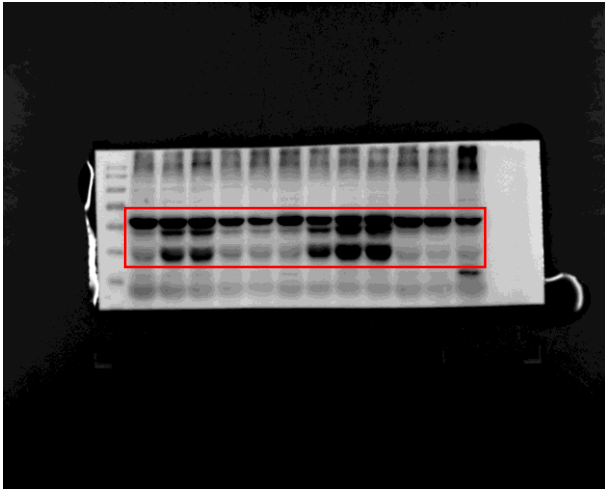


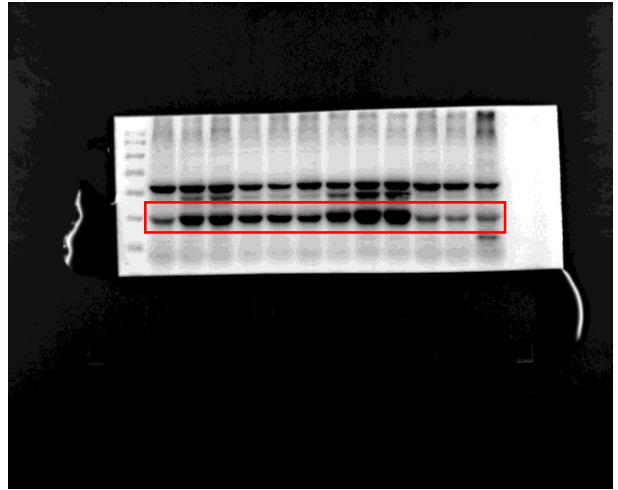
Fig. S11 Uncropped western blot images for Fig. 5k . Red boxes indicate cropped regions.

Fig. S12

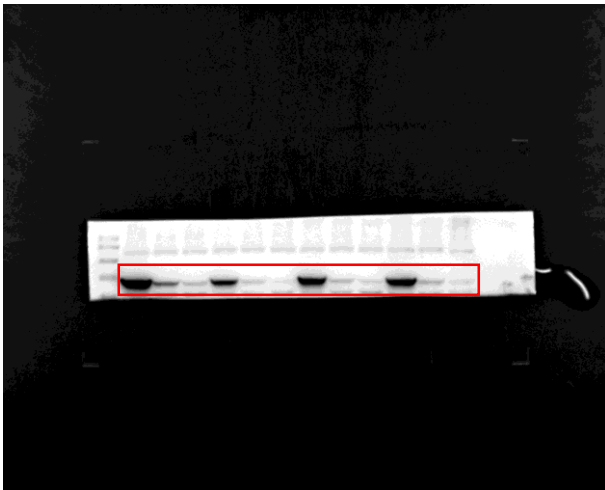
IB: p-JNK



IB: p-p38



IB: Flag (tdTomato)



IB: ACTB

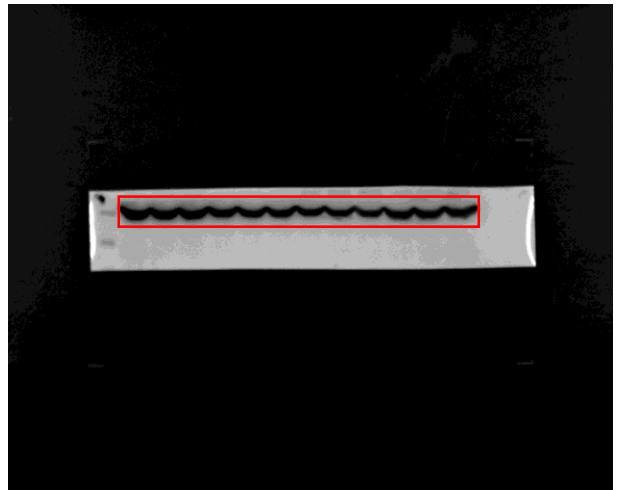


Fig. S12 Uncropped western blot images for Fig. 5I . Red boxes indicate cropped regions.

Fig. S13

IB: HA (RfxCas13d)



IB: ACTB

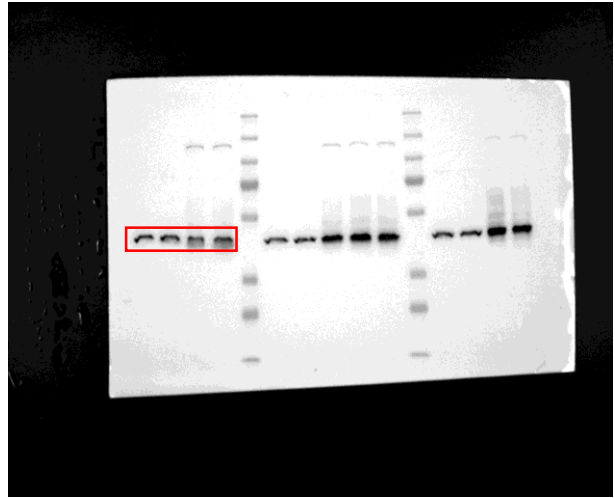
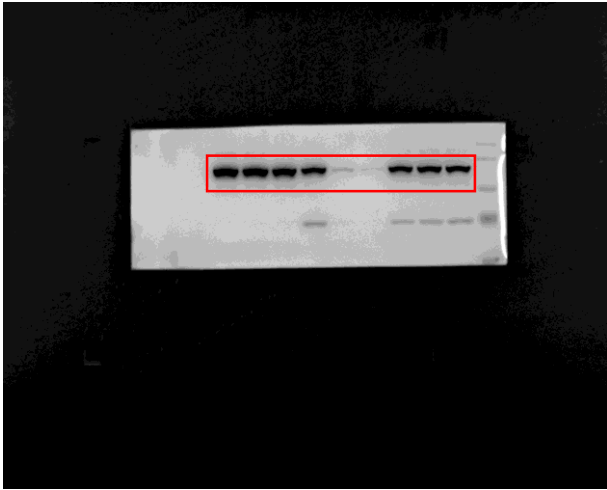


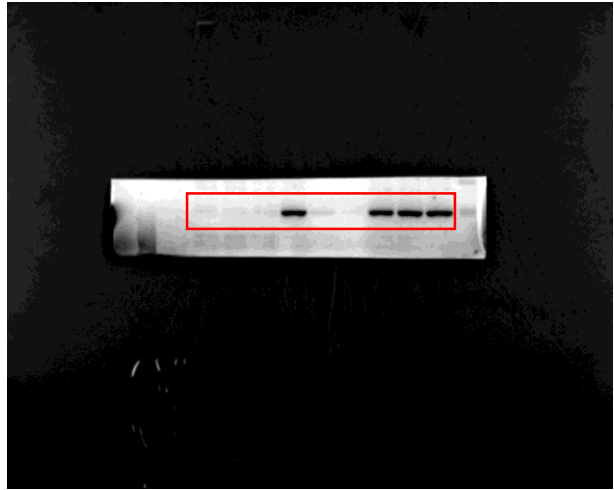
Fig. S13 Uncropped western blot images for Additional file 1: Fig. S3b. Red boxes indicate cropped regions.

Fig. S14

IB: HA (RfxCas13d)



IB: HA (SIK3-S)



IB: ACTB

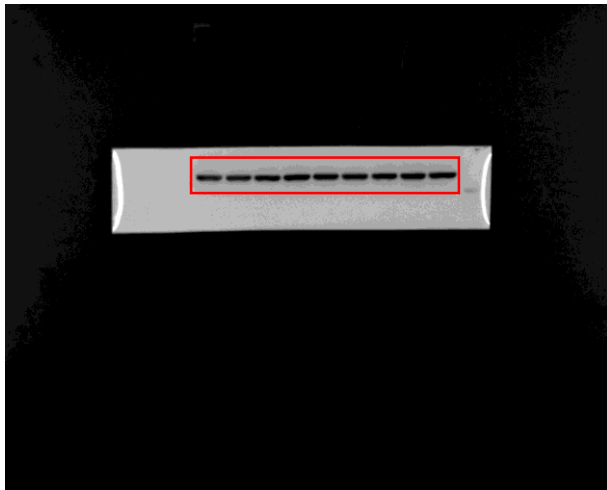
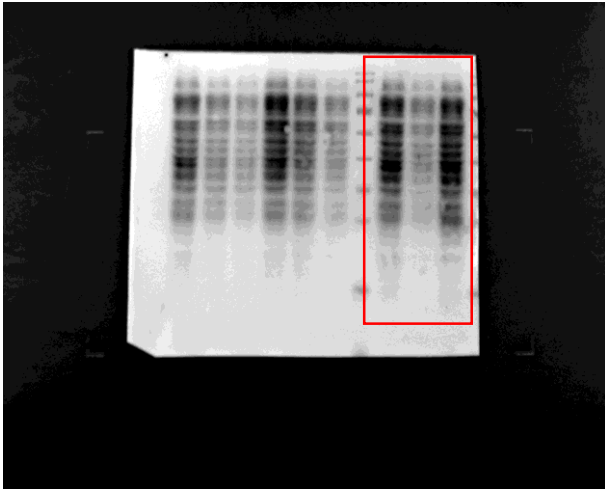


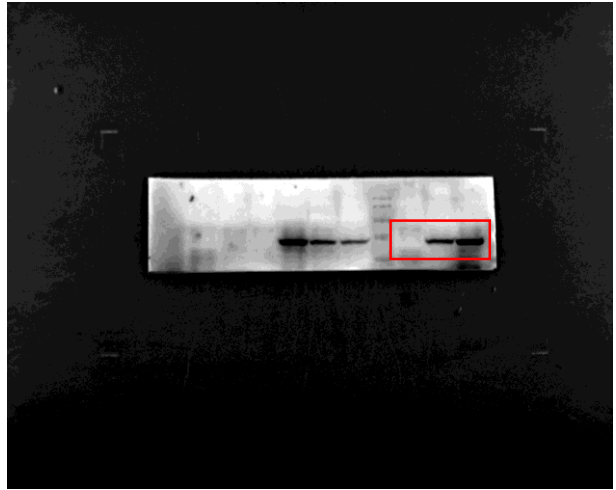
Fig. S14 Uncropped western blot images for Additional file 1: Fig. S7a. Red boxes indicate cropped regions.

Fig. S15

IB: Puromycin



IB: HA (SIK3-S/SIK3-S-K37M)



IB: ACTB

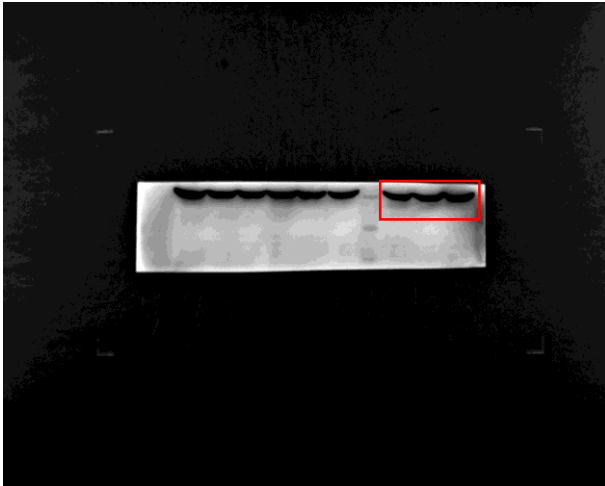
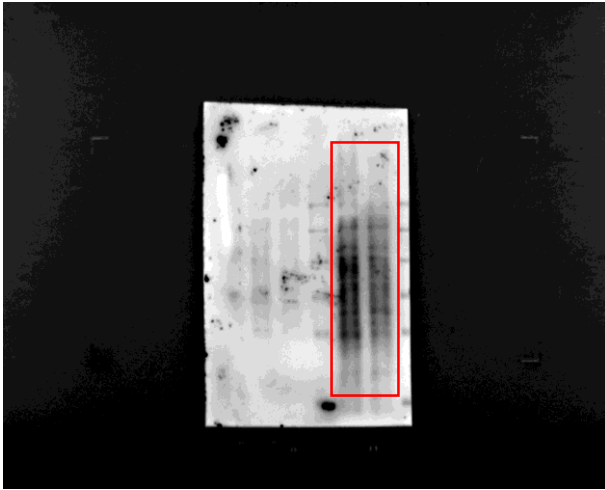


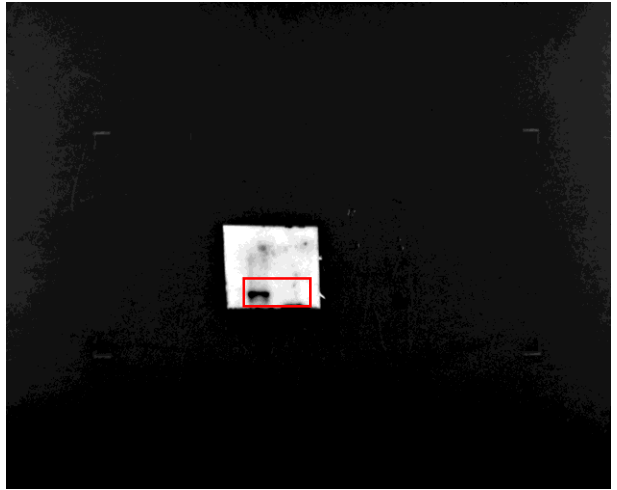
Fig. S15 Uncropped western blot images for Additional file 1: Fig. S9a. Red boxes indicate cropped regions.

Fig. S16

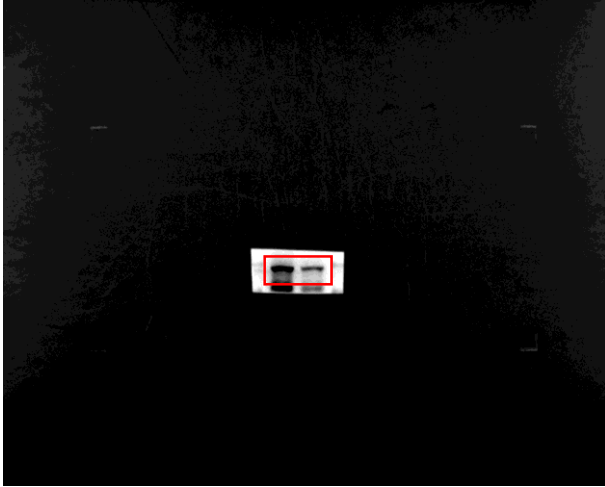
IB: Puromycin



IB: HA (RfxCas13d)



IB: Flag (tdTomato)



IB: ACTB

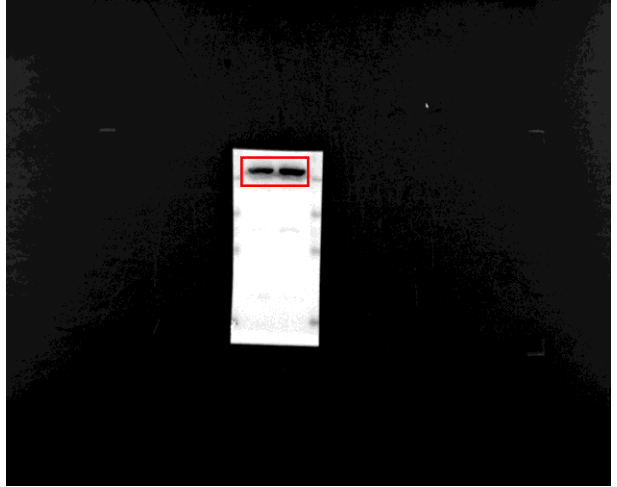
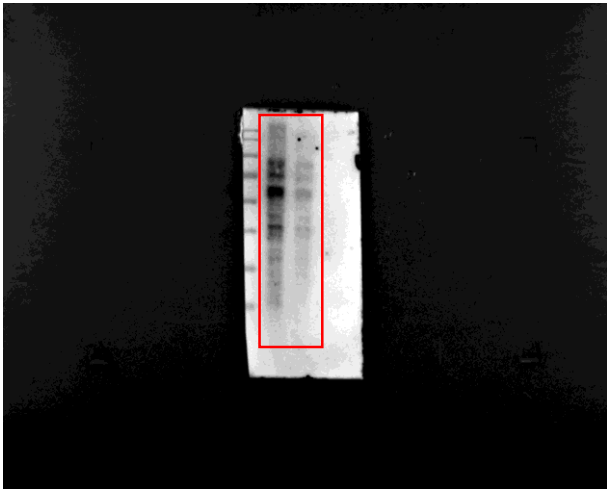


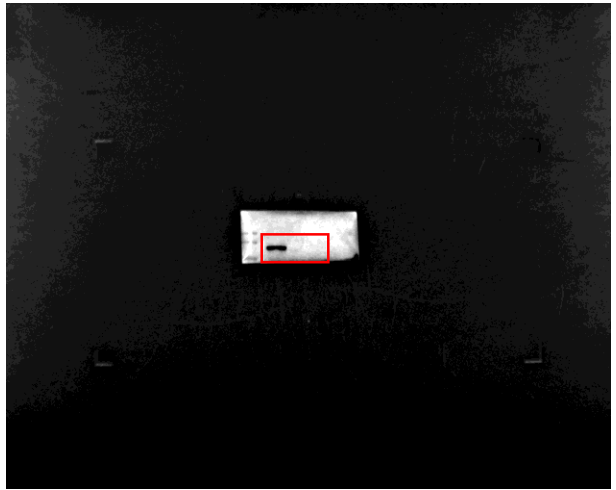
Fig. S16 Uncropped western blot images for Additional file 1: Fig. S11p. Red boxes indicate cropped regions.

Fig. S17

IB: Puromycin



IB: HA (RfxCas13d)



IB: Flag (tdTomato)



IB: ACTB

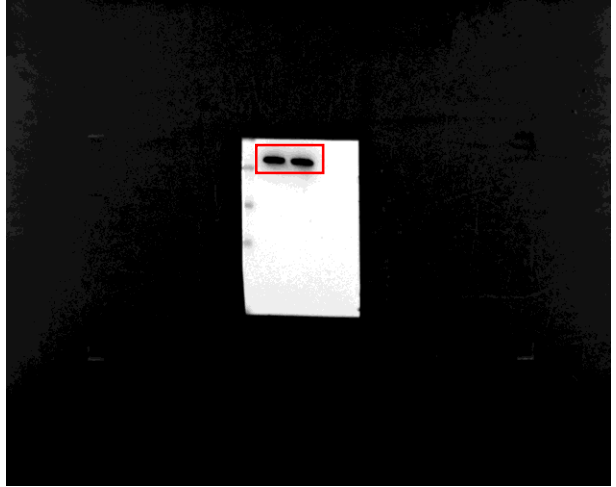
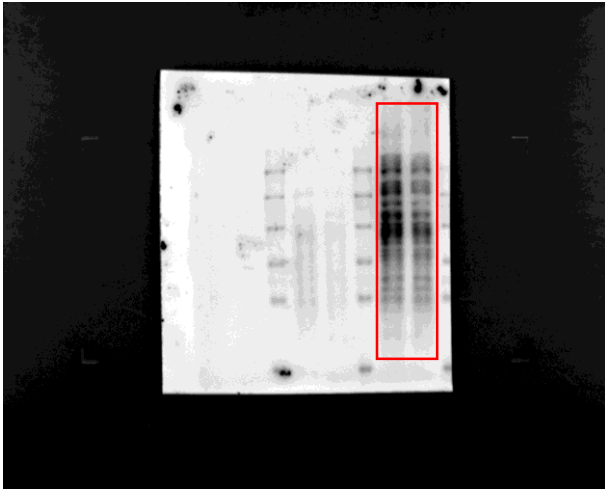


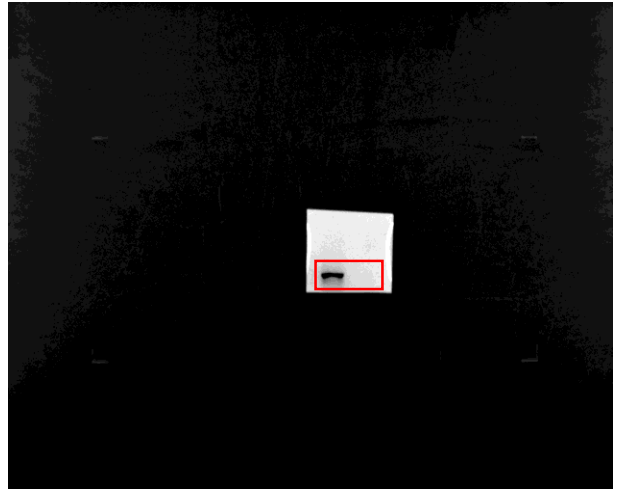
Fig. S17 Uncropped western blot images for Additional file 1: Fig. S11q. Red boxes indicate cropped regions.

Fig. S18

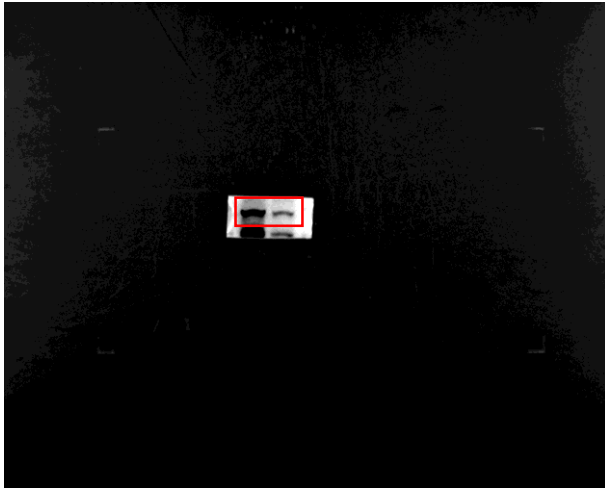
IB: Puromycin



IB: HA (RfxCas13d)



IB: Flag (tdTomato)



IB: ACTB

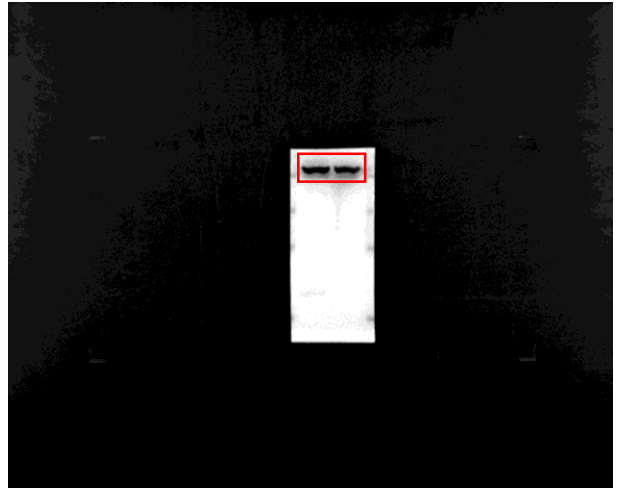
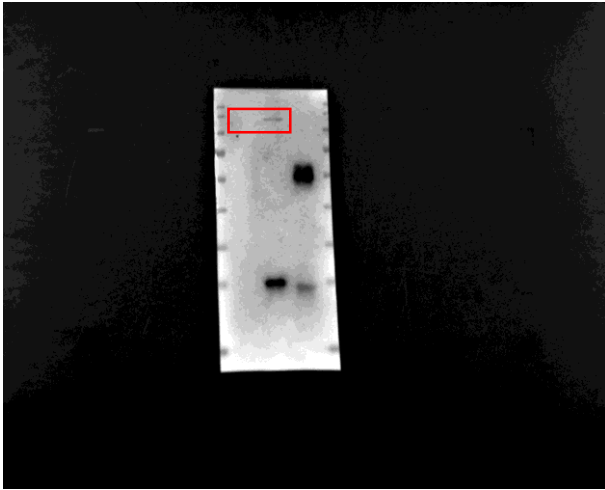


Fig. S18 Uncropped western blot images for Additional file 1: Fig. S11r. Red boxes indicate cropped regions.

Fig. S19

IB: HA (RfxCas13d)



IB: GAPDH

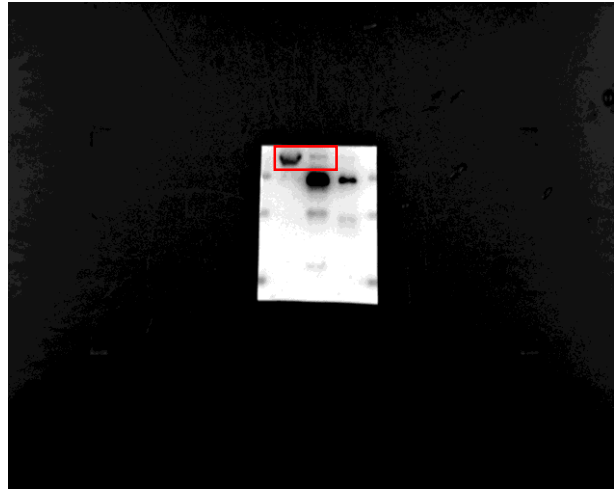
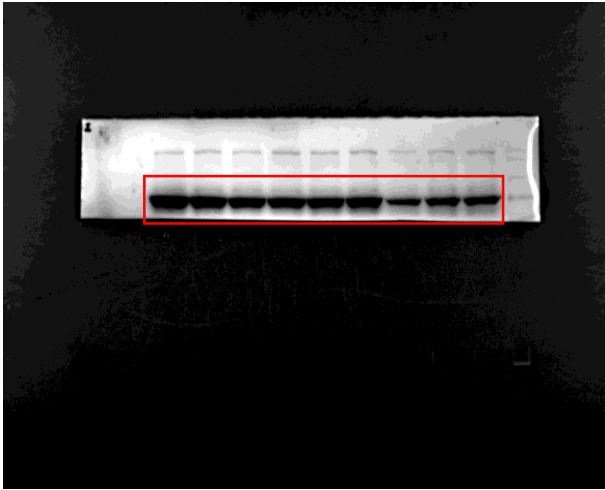


Fig. S19 Uncropped western blot images for Response Fig. 1a (First revision). Red boxes indicate cropped regions.

Fig. S20

IB: HA (RfxCas13d)



IB: GAPDH

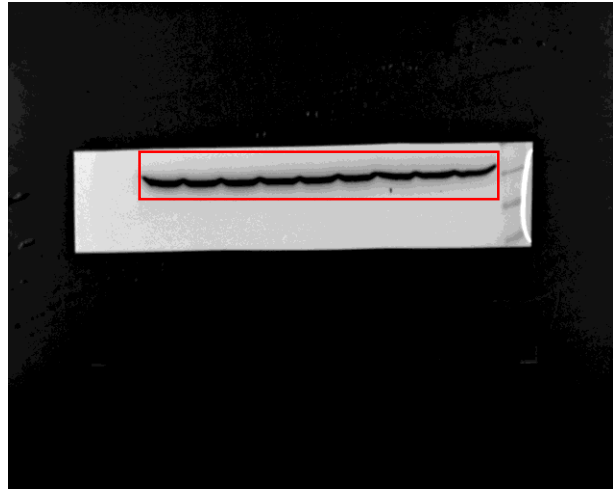
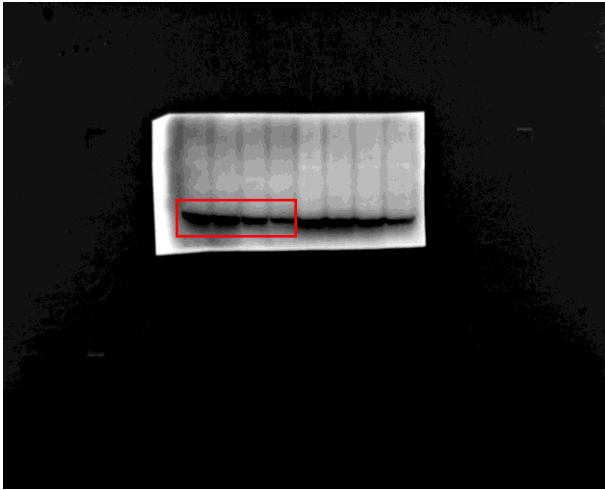


Fig. S20 Uncropped western blot images for Response Fig. 4a (First revision). Red boxes indicate cropped regions.

Fig. S21

IB: HA (RfxCas13d)



IB: GAPDH

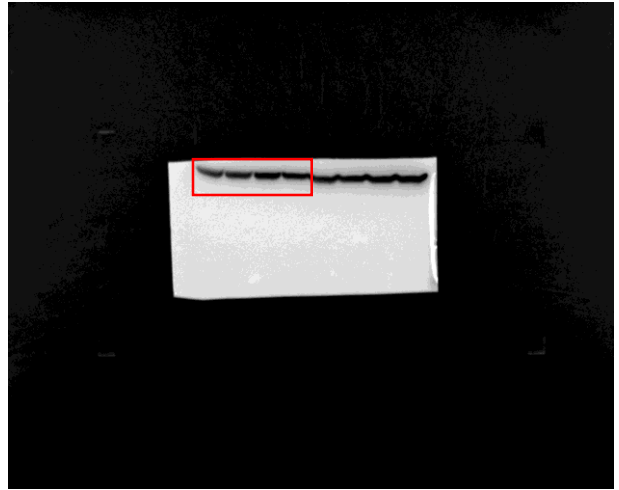


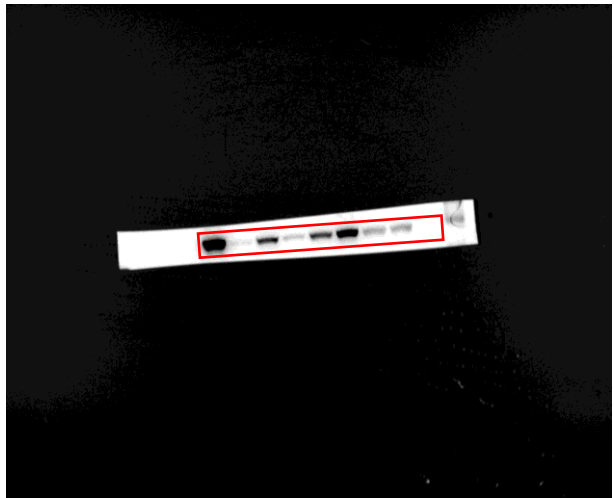
Fig. S21 Uncropped western blot images for Response Fig. 9a (First revision). Red boxes indicate cropped regions.

Fig. S22

IB: HA (RfxCas13d)



IB: HA (SIK3-S)



IB: ACTB

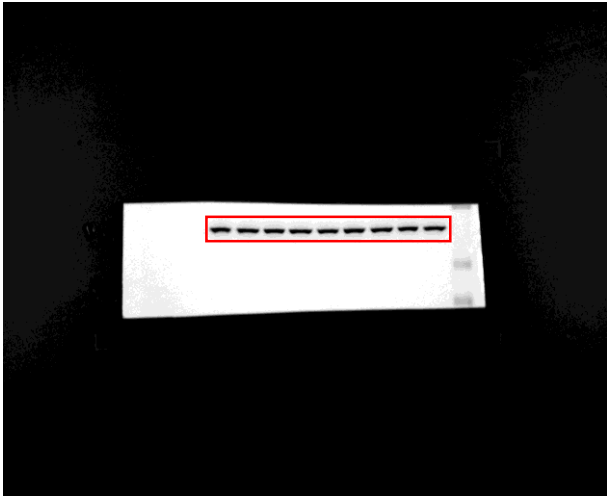


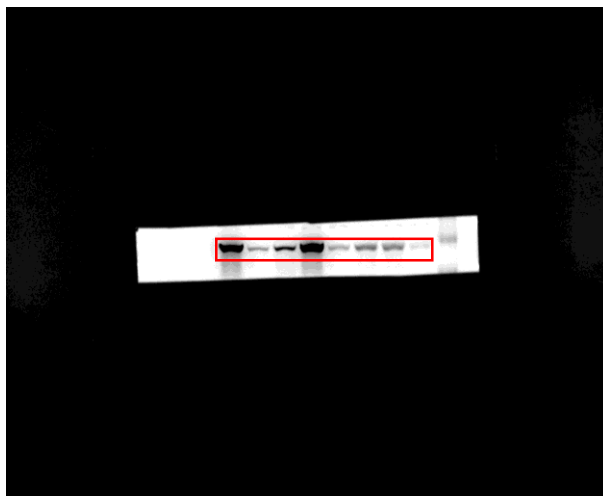
Fig. S22 Uncropped western blot images for Response Fig. 3b (Second revision). Red boxes indicate cropped regions.

Fig. S23

IB: HA (RfxCas13d)



IB: Flag (tdTomato)



IB: ACTB



Fig. S23 Uncropped western blot images for Response Fig. 3c (Second revision). Red boxes indicate cropped regions.