

Figure 3A and 3 B Top Panel

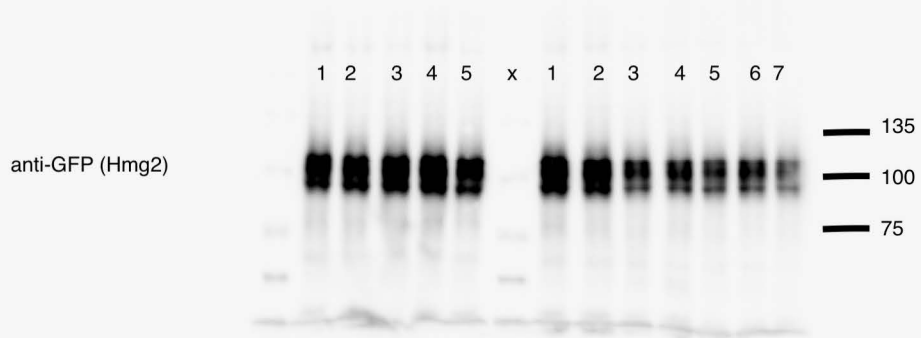


Image acquisition: Western blot was acquired using ChemiDoc on chemiluminescence setting. Image was exported in high resolution (300 dpi) in TIF file format.

Figure 3A Middle Panel

Figure 3B Middle Panel

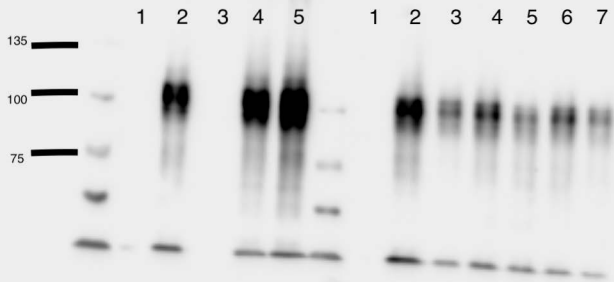


Image acquisition: Western blot was acquired using ChemiDoc on chemiluminescence setting. Image was exported in high resolution (300 dpi) in TIF file format.

anti-GFP (Hmg2)

# Figure 3A and 3B Bottom Panel

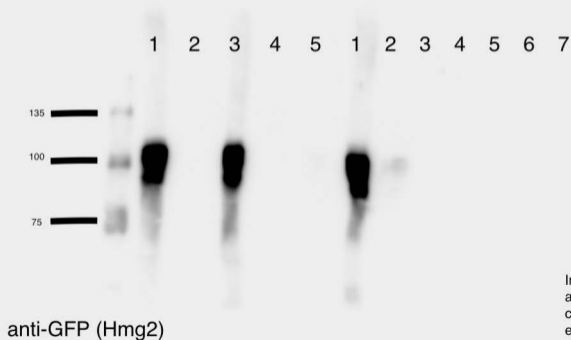


Image acquisition: Western blot was acquired using ChemiDoc on chemiluminescence setting. Image was exported in high resolution (300 dpi) in TIF file format.

# Fig. 3C

1. 2. x. x. 3. 4

115 —  
100 —  
75 —

anti-GFP

Western blot was acquired from a Chemi-doc using chemiluminescence setting, and the file was uploaded as a 300 dpi TIFF file.

Fig. 3C



Image acquisition: Western blot was acquired from a Chemi-Doc, using a chemiluminescence setting, and the file was uploaded as a TIFF file format.

Figure 4A

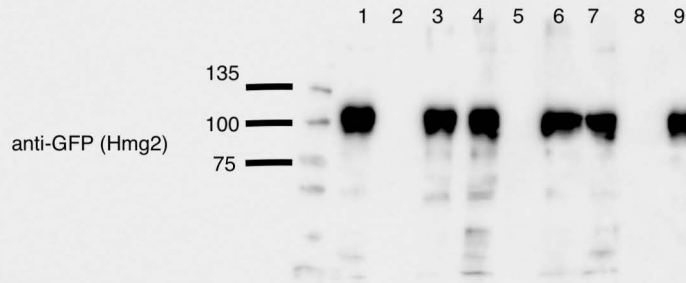


Image acquisition: Western blot was acquired using ChemiDoc on chemiluminescence setting. Image was exported in high resolution (300 dpi) in TIF file format.

Fig. 4B

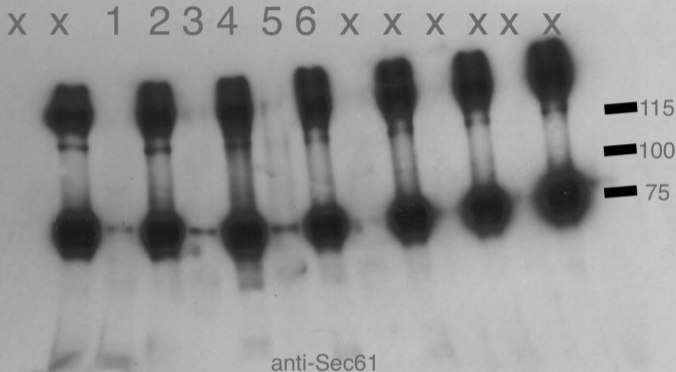


Image acquisition: Western blot was acquired from a Chemi-doc, using a chemiluminescence setting, and the file was updated as a 300 dpi TIFF file.

Figure 4C

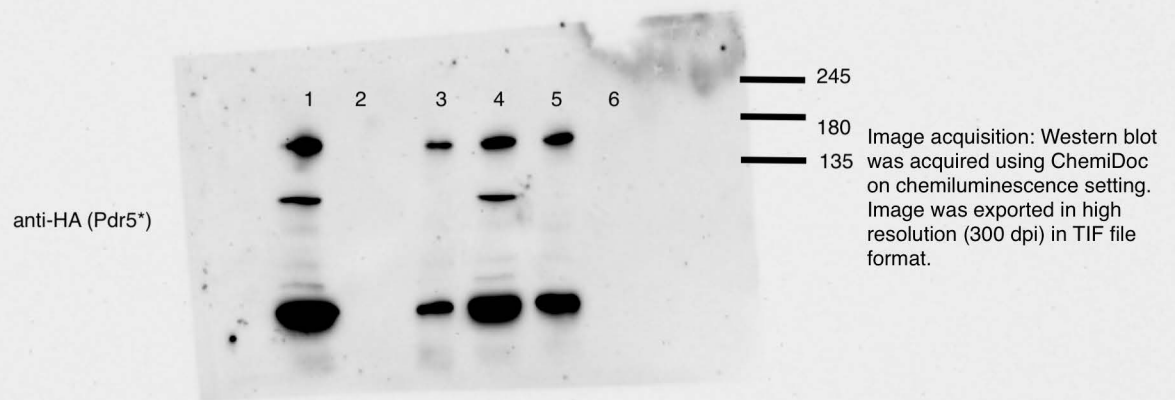




Figure 4E

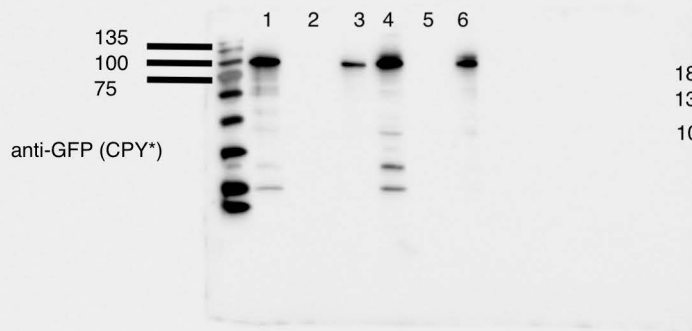


Figure 4D

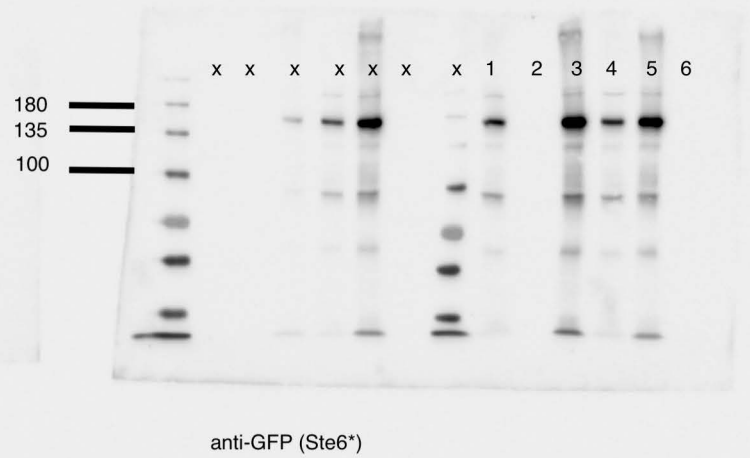


Image acquisition: Western blot was acquired using ChemiDoc on chemiluminescence setting. Image was exported in high resolution (300 dpi) in TIF file format.

# Figure 4F

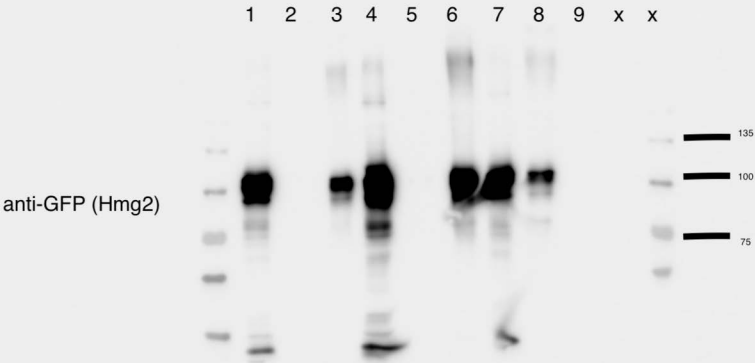
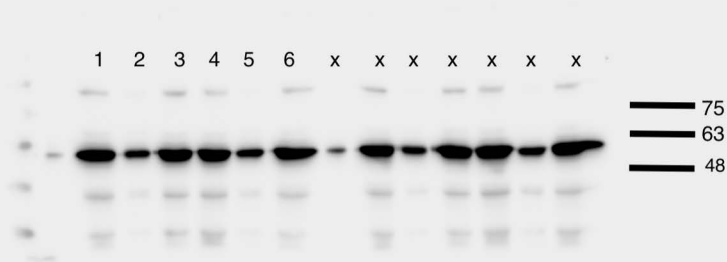


Image acquisition: Western blot was acquired using ChemiDoc on chemiluminescence setting. Image was exported in high resolution (300 dpi) in TIF file format.

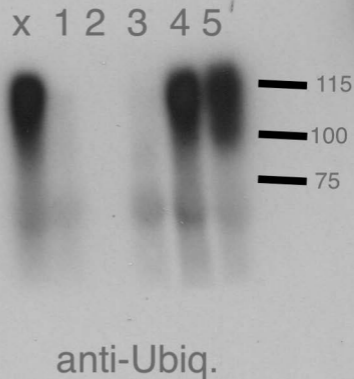
## Figure 6G Top Panel



anti-GFP (Pre6)

Image acquisition: Western blot was acquired using ChemiDoc on chemiluminescence setting. Image was exported in high resolution (300 dpi) in TIF file format.

Fig. 7B (left panel)



Western blot was acquired from an automatic film processor.  
The film was scanned in high resolution (600 dpi) in TIFF format.

Fig. 7B (left panel)



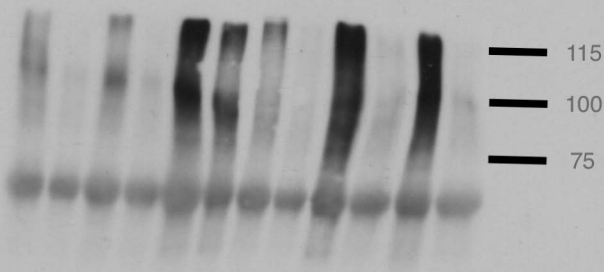
Western blot was acquired from an automatic film processor.  
The film was scanned in high resolution (600 dpi) in TIFF format.

Figure 7B (right panel)

153

ubiq.  $\alpha$

x x x x x 1 2 3 4 5 6 7



anti-ubiq.

Western blot was acquired from an automatic film processor.  
The film was scanned in high resolution (600 dpi) in TIFF format.

# Fig. 7B (right panel)



Figure 7E top panel

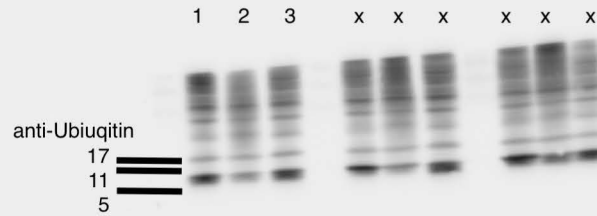


Image acquisition: Western blot was acquired using ChemiDoc on chemiluminescence setting.

Image was exported in high resolution (300 dpi) in TIF file format.



Figure 7E Bottom Panel

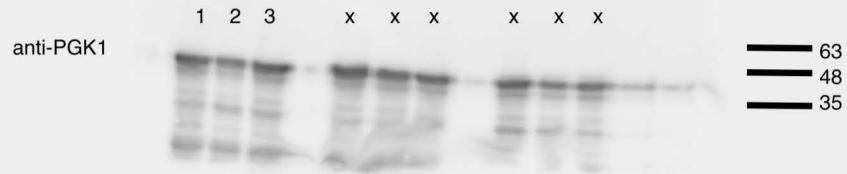
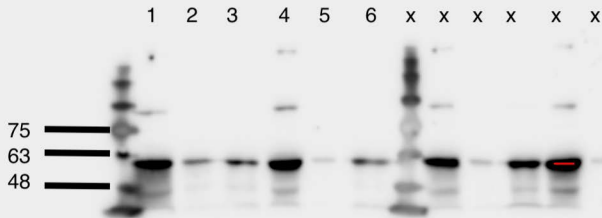


Image acquisition: Western blot was acquired using ChemiDoc on chemiluminescence setting. Image was exported in high resolution (300 dpi) in TIF file format.

## Figure 6G Bottom Panel



anti-GFP (Pre6)

Image acquisition: Western blot was acquired using ChemiDoc on chemiluminescence setting. Image was exported in high resolution (300 dpi) in TIF file format.

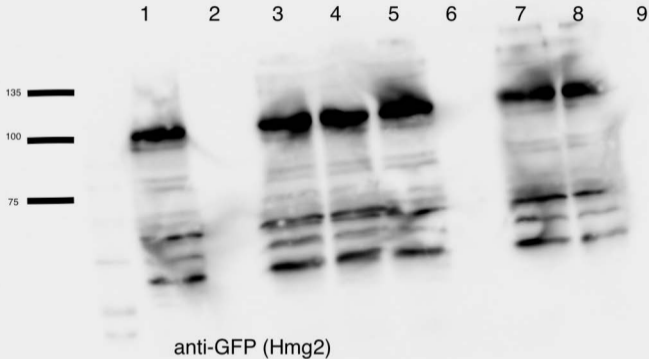


Image acquisition: Western blot was acquired using ChemiDoc on chemiluminescence setting. Image was exported in high resolution (300 dpi) in TIF file format.

Figure 71

# Figure S1C ( Left panel)

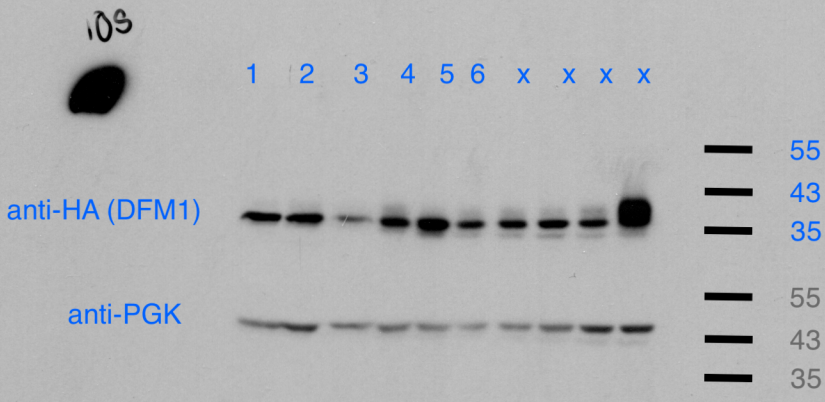
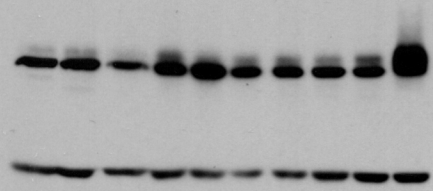


Image acquisition: Western blot was acquired from an automatic film processor. The film was scanned in high resolution (600 dpi) in TIFF file format.

305



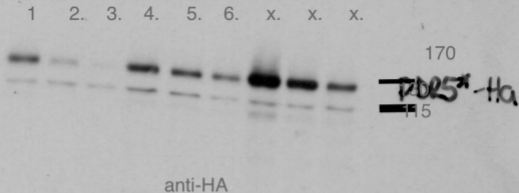
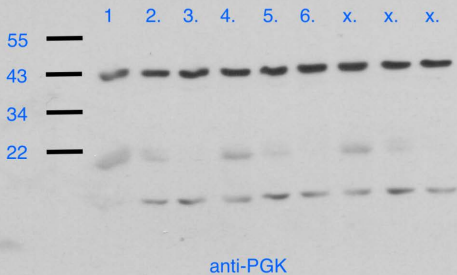


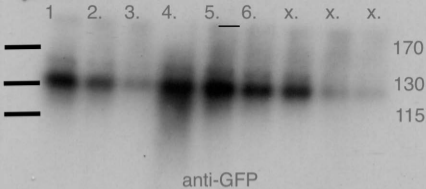
Fig. S1A Top panel

Western blot was acquired from an automatic film processor. The film was scanned in high resolution (600 dpi) TIFF file format.

Fig. S1A Bottom Panel



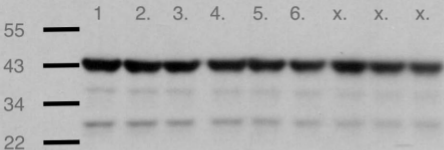
Western blot was acquired from an automatic film processor. The film was scanned in high resolution (600 dpi) TIFF file format.



anti-GFP

## Fig. S1B Top panel

Western blot was acquired from an automatic film processor. The film was scanned in high resolution (600 dpi) TIFF file format.



anti-PGK

## Fig. S1B Bottom Panel

Western blot was acquired from an automatic film processor. The film was scanned in high resolution (600 dpi) TIFF file format.



# Figure S1C ( Left panel)



Image acquisition: Western blot was acquired from an automatic film processor. The film was scanned in high resolution (600 dpi) in TIFF file format.

303

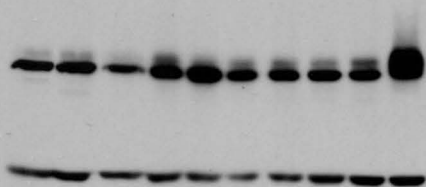


Figure S1C Top Panel (Right)

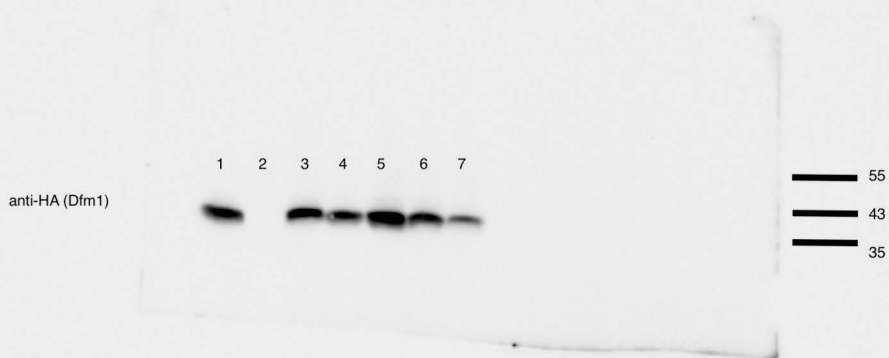


Image acquisition: Western blot was acquired using ChemiDoc on chemiluminescence setting. Image was exported in high resolution (300 dpi) in TIF file format.

Figure S1C Bottom Panel (Right)

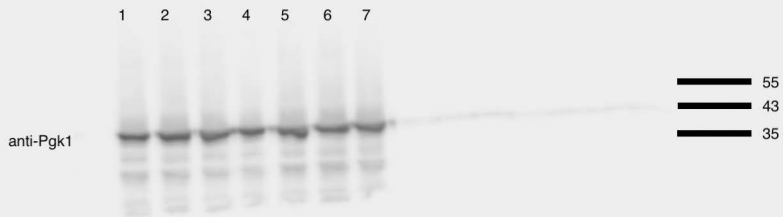


Image acquisition: Western blot was acquired using ChemiDoc on chemiluminescence setting. Image was exported in high resolution (300 dpi) in TIF format.

Figure S2B

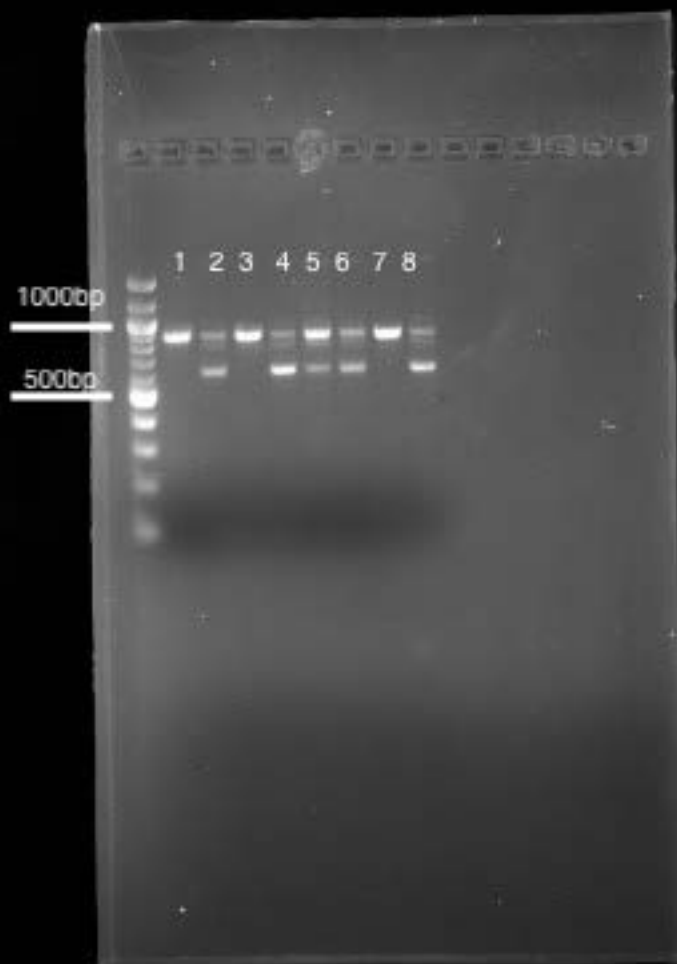


Figure S2A

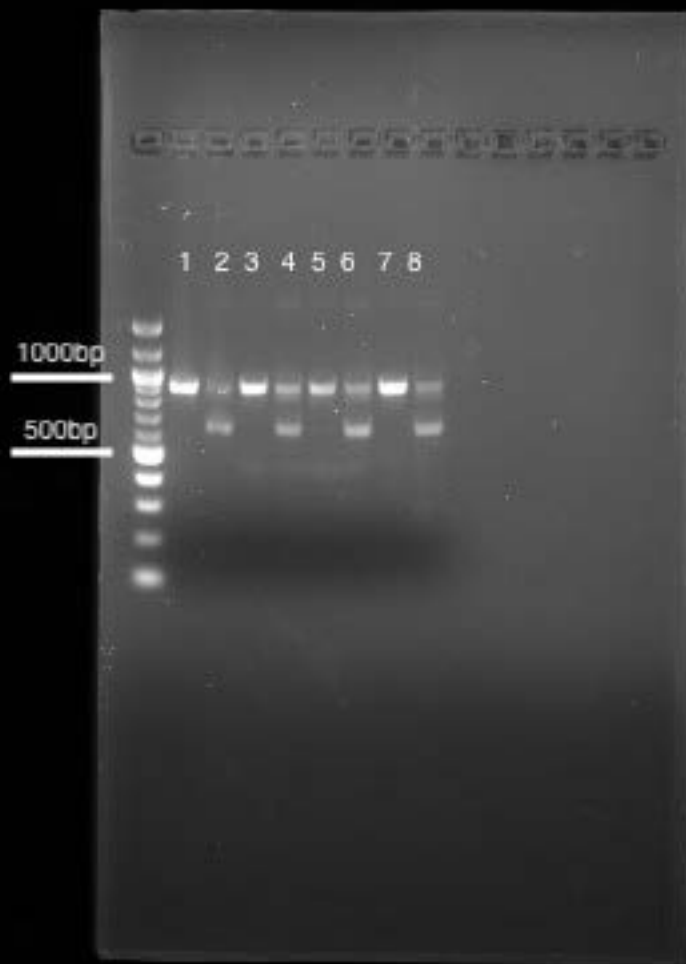


Image acquisition: DNA gel was acquired using ChemiDoc on SYBR Safe setting. Image was exported in high resolution (300 dpi) in TIF format.

Figure S5A Top Panel

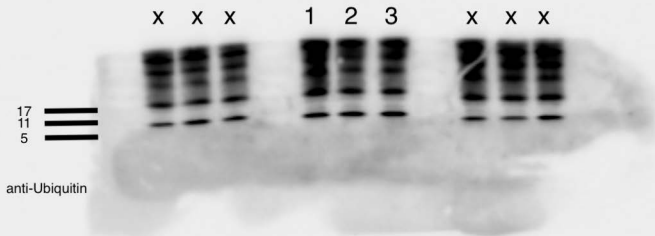


Image acquisition: Western blot was acquired using ChemiDoc on chemiluminescence setting. Image was exported at high resolution (300 dpi) in TIF format.

## Figure S5A Bottom Panel



Image acquisition: Western blot was acquired using ChemiDoc on chemiluminescence setting. Image was exported at high resolution (300 dpi) in TIF format.