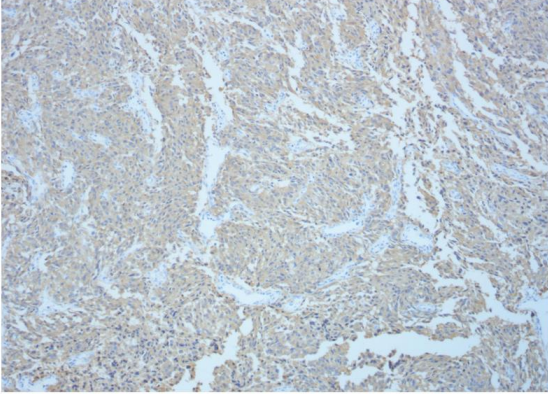
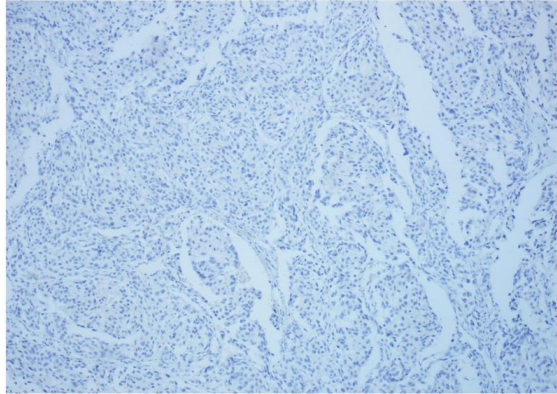
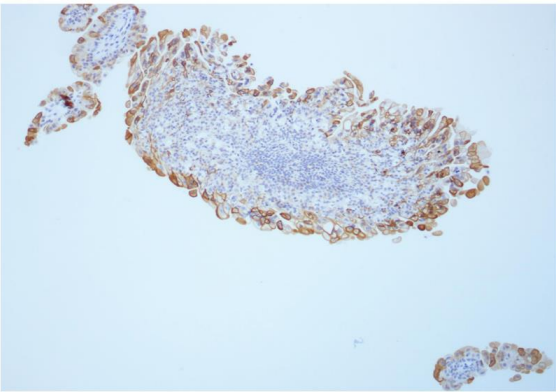
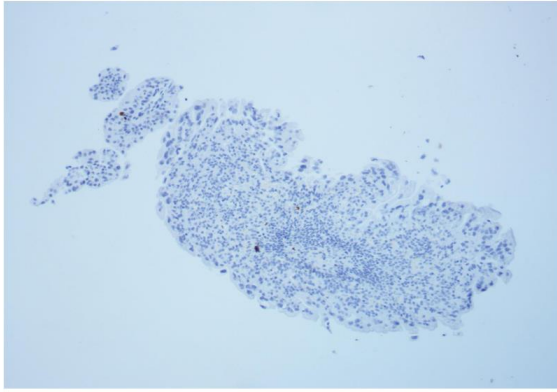


**A****B****C****D**

**SUPPLEMENTARY FIGURE 2 The intraoperative condition and postoperative pathology results.** (A, B) The results of postoperative pathology with Syn(+) (A) and S-100 (-) (B) in IHC staining of bladder pheochromocytomas. (C, D) The results of postoperative pathology with HE staining and CK20+(umbrella cells) (C) and Ki-67+(1%) (D) in IHC staining of urothelial papilloma.