

Supplementary Online Content

Engel L, Majmudar I, Mihalopoulos C, Tollit MA, Pang KC. Assessment of quality of life of transgender and gender-diverse children and adolescents in Melbourne, Australia, 2017-2020. *JAMA Netw Open*. 2023;6(2):e2254292. doi:10.1001/jamanetworkopen.2022.54292

eTable 1. Summary of the Instruments Used in the Trans20 Study

eFigure 1. CHU-9D Scores by Age Group

eFigure 2. CHU-9D Scores by Gender Presumed at Birth

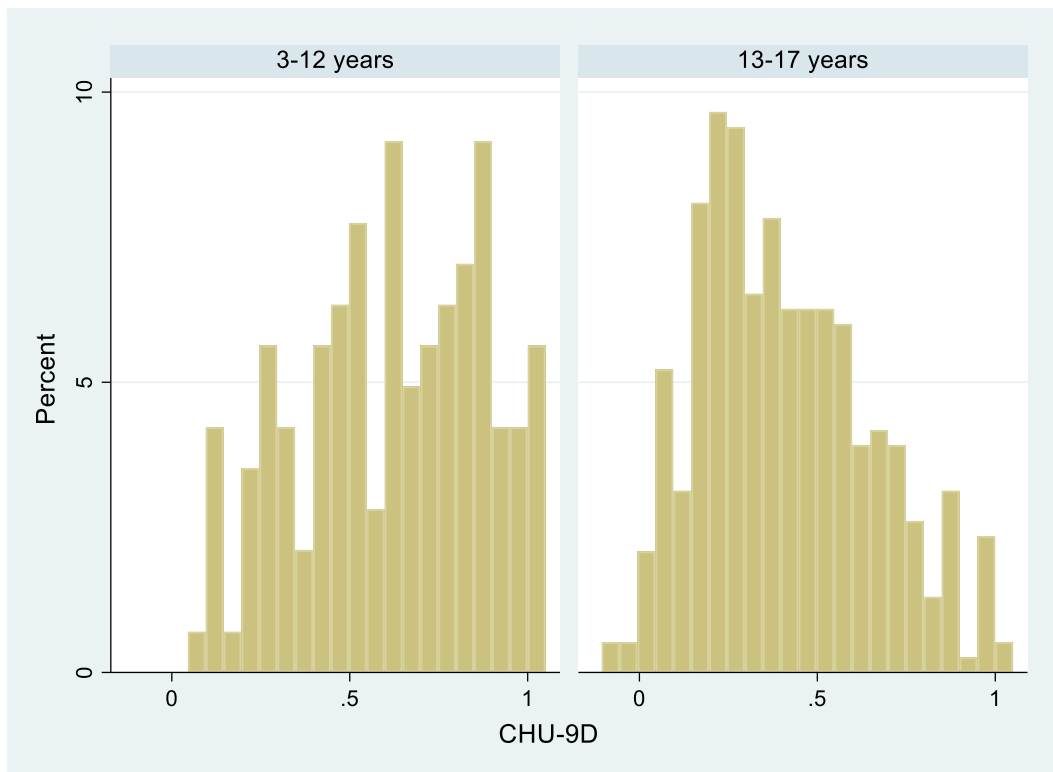
eFigure 3. Centile Chart Displaying CHU-9D Scores by Age and Gender Presumed at Birth

This supplementary material has been provided by the authors to give readers additional information about their work.

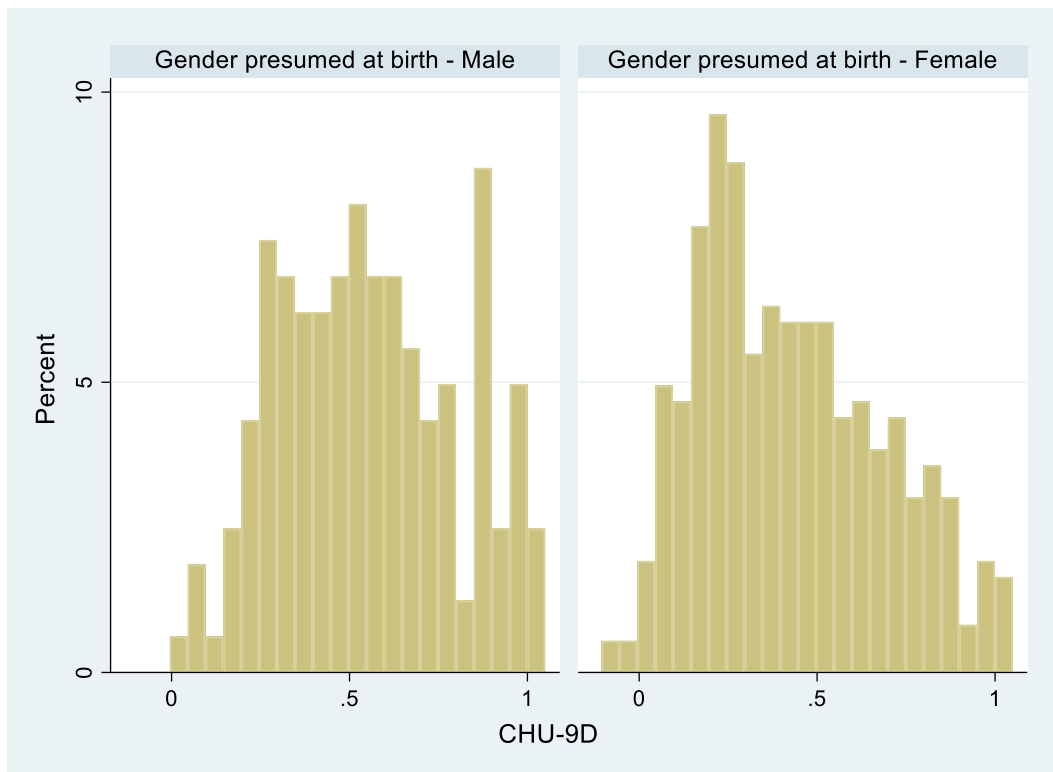
eTable 1: Summary of the Instruments Used in the Trans20 Study

Construct	Instrument	Age range and source
Quality of Life	Child Health Utility (CHU-9D)	Young person report: 6yrs+
Demographics	Trans20 questionnaire (age, sex assigned at birth, education level, country of origin and language spoken at home, postcode)	Parent report: all ages Young person report: all ages
Gender Identity	Trans20 questionnaire	Young person report: all ages
Health information		
Gender Dysphoria	Gender Preoccupation and Stability Questionnaire (GPSQ)	Young person report: 11yrs+
Physical and mental health problems	Trans20 questionnaire	Parent report: all ages
Mental health problems	Child Behaviour Checklist (CBCL)	Parent report: all ages
Suicidality	Columbia Suicide Severity Rating (CSSR)	Young person report: 12yrs+
Social factors		
Bullying	Gatehouse bullying scale	Young person report: 8yrs+
Social Transition	Trans20 questionnaire	Young person report: 8yrs+
Support	Trans20 questionnaire	Young person report: all ages

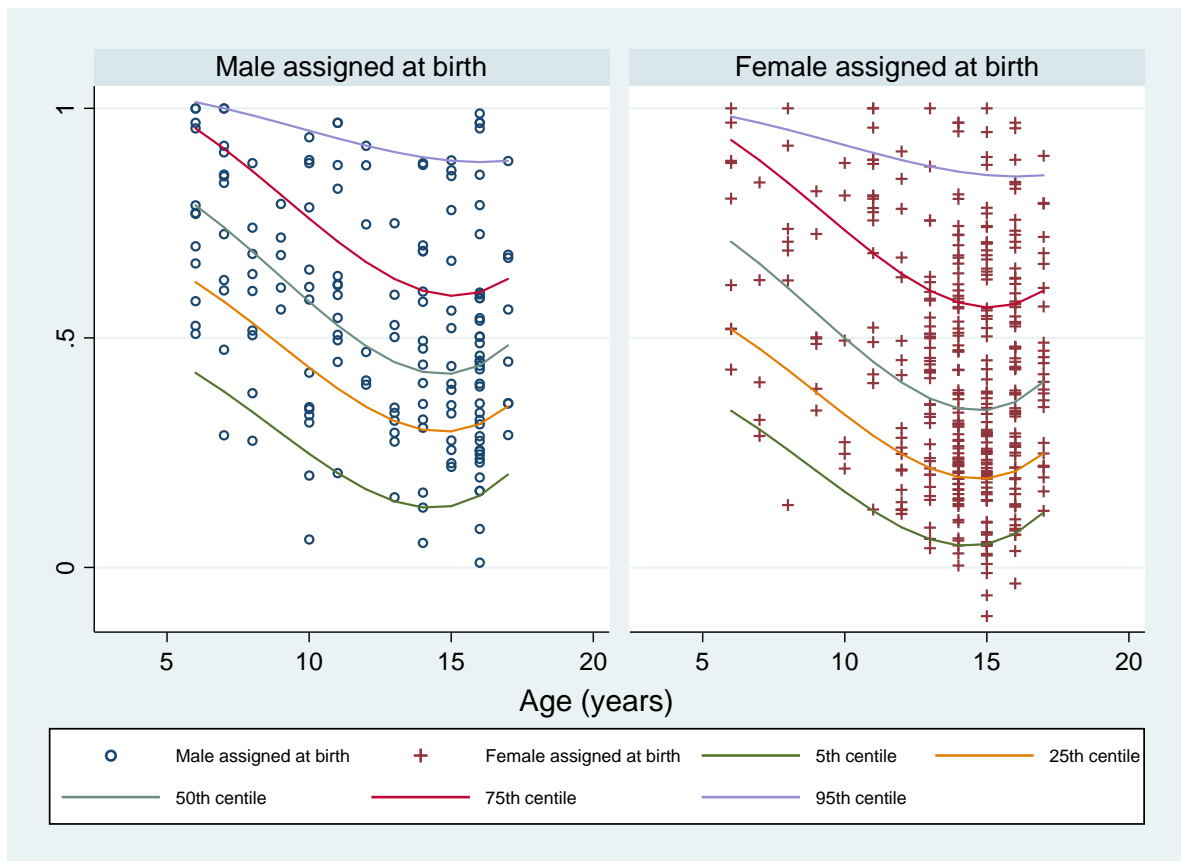
eFigure 1: CHU-9D Scores by Age Group



eFigure 2: CHU-9D Scores by Gender Presumed at Birth



eFigure 3: Centile Chart Displaying CHU-9D Scores by Age and Gender Presumed at Birth



CHU-9D scores are plotted by age and gender presumed at birth. Centiles were predicted using quantile regression for the best fitting model for the mean, where the covariates are the power variable of age and gender presumed at birth.