

Table S1. Key for protected area names and types for the map in Figure 1. Source: UNEP-WCMC and IUCN (2022), Protected Planet: The World Database on Protected Areas (WDPA) [Online], August 2022, Cambridge, UK: UNEP-WCMC and IUCN. Available at: www.protectedplanet.net. The two community conservation areas relevant to the paper were added manually to the list and the map.

Map ID	Area Name	Area Type
0	Kafta-Shiraro	National Park
1	Kafa	UNESCO-MAB Biosphere Reserve
2	Arsi Mountains	National Park
3	Borena	National Park
4	Maze	National Park
5	Beroye	Controlled Hunting Area
6	Bilen-Hertale	Controlled Hunting Area
7	Dhati-Welel	National Park
8	Tullu Lafto-Sadden	Sanctuary
9	Abasheba Demero	Controlled Hunting Area
10	Asbari-Dullessa	Controlled Hunting Area
11	Chifra	Controlled Hunting Area
12	Dindin	Controlled Hunting Area
13	Shinile-Meto	Controlled Hunting Area
14	Sororo-Torgam-Gara- Muktar	Controlled Hunting Area
15	Urgan-Bula	Controlled Hunting Area
16	Naniga Dhera	Controlled Hunting Area
17	Besmena-Odobulu	Controlled Hunting Area
18	Gassera Wabe	Controlled Hunting Area
19	Hurufa Soma	Controlled Hunting Area
20	Jibat	Controlled Hunting Area
21	Munessa Ambagoda-Sade	Controlled Hunting Area
22	Denbel-Ayisha-Adigala	Controlled Hunting Area
23	Liben Plain	Sanctuary
24	Malka Guba	National Park
25	Gara-Meti	Open Hunting Area
26	Munessa Kuke	Controlled Hunting Area
27	Gara-Gumbi	Open Hunting Area
28	Hanto	Controlled Hunting Area
29	Haro-Aba-Dikko	Controlled Hunting Area
30	Telalak Dewe	Controlled Hunting Area
31	Welishet Sala	Controlled Hunting Area
32	Weyib Valley	Controlled Hunting Area

33	Hadar	Controlled Hunting Area
34	Amibera-Melikasad	Controlled Hunting Area
35	Aluto	Controlled Hunting Area
36	Adaba-Dodola	Controlled Hunting Area
37	Gelila-Duru	Open Hunting Area
38	Bejimiz	National Park
39	Deddessa	National Park
40	Geralle	National Park
41	Gibe Sheleko	National Park
42	Loka-Abaya	National Park
43	Mao-Komo	National Park
44	Yayu	UNESCO-MAB Biosphere Reserve / National Forest Priority Area
45	Abelti Gibie	National Forest Priority Area
46	Belete Gera	National Forest Priority Area
47	Babiya-Fola	National Forest Priority Area
48	Tiro-Boter-Becho	National Forest Priority Area
49	Godere	National Forest Priority Area
50	Sele Anderacha	National Forest Priority Area
51	Sibu-Tole-Kobo	National Forest Priority Area
52	Bonga	National Forest Priority Area
53	Gura Ferda	National Forest Priority Area
54	Yeki	National Forest Priority Area
55	Jibat	National Forest Priority Area
56	Chilimo-Gaji	National Forest Priority Area
57	Wof-Washa	National Forest Priority Area
58	Dire-Gerbicha	National Forest Priority Area
59	Butajira	National Forest Priority Area
60	Menagesha-Suba	National Forest Priority Area
61	Anferara-Wadera	National Forest Priority Area
62	Bore-Anferara	National Forest Priority Area
63	Megada	National Forest Priority Area
64	Negele (Mankubssa)	National Forest Priority Area
65	Arero	National Forest Priority Area
66	Gergeda	National Forest Priority Area
67	Jorgo-Wato	National Forest Priority Area
68	Konchi	National Forest Priority Area
69	Chato-Sengi-Dengeb	National Forest Priority Area
70	Komto-Waga-Tsige	National Forest Priority Area

71	Dodola-Adaba-Lajo	National Forest Priority Area
72	Aloshie-Batu	National Forest Priority Area
73	Goro-Bele	National Forest Priority Area
74	Harena-Kokosa	National Forest Priority Area
75	Mena-Angetu	National Forest Priority Area
76	Kubayo	National Forest Priority Area
77	Yegof-Erike	National Forest Priority Area
78	Gedo	National Forest Priority Area
79	Desa-A	National Forest Priority Area
80	Gumburda-Grakaso	National Forest Priority Area
81	Yerer	National Forest Priority Area
82	Shako	National Forest Priority Area
83	Abey-Albasa	National Forest Priority Area
84	Arba-Minch	National Forest Priority Area
85	Yabelo	National Forest Priority Area
86	Munesa-Shashemene	National Forest Priority Area
87	Chebera Churchura	National Park
88	Alitash	National Park
89	Donkoro Chaka	National Park
90	Awash	National Park
91	Simien Mountains	National Park/UNESCO World Heritage Site
92	Guassa	Community Conservation Area
93	Yangudi Rassa	National Park
94	Mago	National Park
95	Nech-sar	National Park
96	Abijatta-Shalla	National Park
97	Omo	National Park
98	Bale Mountains	National Park/(tentative) UNESCO World Heritage Site
99	Gewane	Wildlife Reserve
100	Mille-Serdo	Wildlife Reserve
101	Awash-West	Wildlife Reserve
102	Chelbi	Wildlife Reserve
103	Yabello	Sanctuary
104	Tama	Wildlife Reserve
105	Senkelle Swayne's Hartebeest	Sanctuary
106	Halledeghe Asobot	Wildlife Reserve
107	Gambella	National Park

108	Dabus Valley	Controlled Hunting Area
109	Tedo	Controlled Hunting Area
110	Omo West	Controlled Hunting Area
111	Murule	Controlled Hunting Area
112	Arba Gugu	Controlled Hunting Area
113	Eastern Hararghe	Controlled Hunting Area
114	Awash West	Controlled Hunting Area
115	Afdem-Gewane	Controlled Hunting Area
116	Erer-Gota	Controlled Hunting Area
117	Boyo Swamp	Controlled Hunting Area
118	Segen Valley	Controlled Hunting Area
119	Babile Elephant	Sanctuary
120	Akobo	Controlled Hunting Area
121	Mizan-Teferi	Controlled Hunting Area
122	Chilalo-Gallema	National Forest Priority Area
123	Deme-Laha	National Forest Priority Area
124	Bulki-Melakoza	National Forest Priority Area
125	Gidole-Kemba	National Forest Priority Area
126	Kahatasa-Guangua	National Forest Priority Area
127	Sekela Mariam	National Forest Priority Area
128	Dengego-Melka Jedbu	National Forest Priority Area
129	Gara Muleta	National Forest Priority Area
130	Jarso-Gursum	National Forest Priority Area
131	Dindin-Arbagugu	National Forest Priority Area
132	Jalo-Addes	National Forest Priority Area
133	Abobo-Gog	National Forest Priority Area
134	Gebre Dima	National Forest Priority Area
135	Sigmo-Geba	National Forest Priority Area
136	Abune Yosef	Community Conservation Area

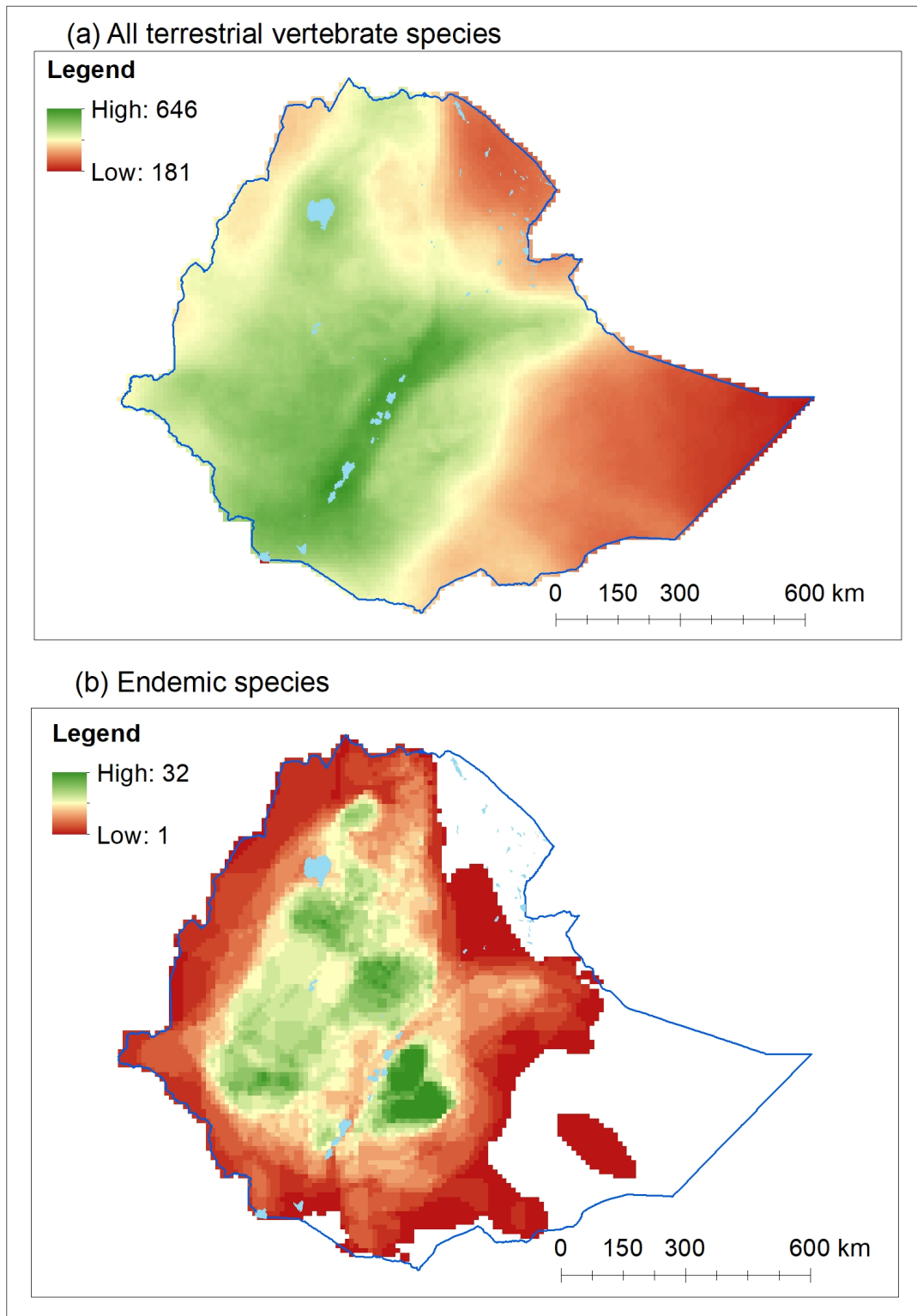


Fig. S1. Map of Ethiopia highlighting the distribution of (A) terrestrial vertebrates and (B) endemic terrestrial vertebrates across the country along gradients of high to low species richness. Modified with permission from (22)

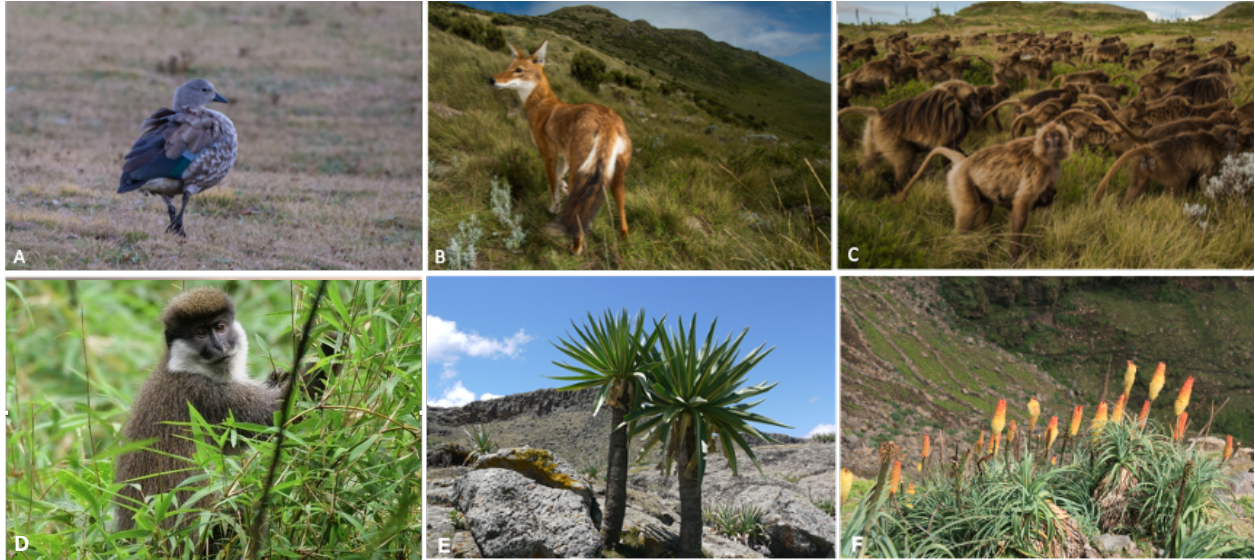


Fig. S2. Six flagship fauna and flora endemic to the Ethiopian Highlands. (A) The blue-winged goose (Aves: Anatidae: *Cyanochen cyanoptera*) inhabits rivers, lakes, and Afroalpine grasslands, (B) the Ethiopian wolf (Mammalia; Canidae: *Canis simensis*) is the world's rarest canid and subsists mostly on rodents, (C) Geladas (Mammalia: Cercopithecidae: *Theropithecus gelada*) form complex multi-tiered societies and eat mostly graminoids, (D) Bale monkeys (Mammalia: Cercopithecidae: *Chlorocebus djamdjamensis*) favour a diet of primarily montane bamboo, (E) Giant lobelias (Eudicots: Campanulaceae: *Lobelia rhynchopetalum*) are among the tallest plants on the Afroalpine grasslands where they occur, and (F) Torch lilies (Eudicots: Asphodelaceae: *Kniphofia foliosa*) are a perennial flowering herb native to Afroalpine grasslands. Photo (A) by Vivek V. Venkataraman, Photo (B) by Jeffrey T. Kerby and Trevor Frost, Photo (C) by Jeffrey T. Kerby, Photo (D) by Addisu Mekonnen, Photo (E) by Abel Gizaw, and Photo (F) by Sebsebe Demissew.



Fig. S3. Fires covering ~500 ha in Guassa Community Conservation Area ignited during a November 2021 battle from Ethiopia's ongoing civil war. In addition to the immediate threats stemming from the war, Ethiopian biodiversity faces long-term challenges resulting from rapid human population growth, land use change, and climate change.

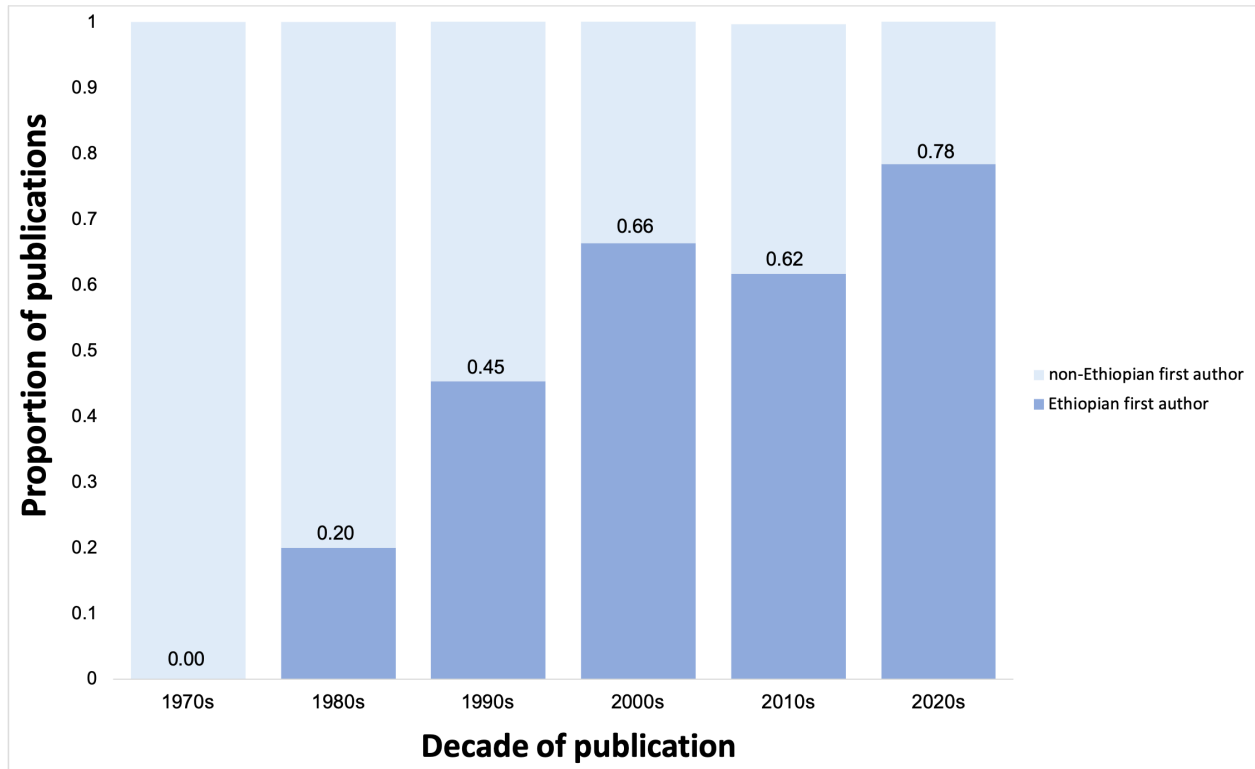


Fig. S4. Proportion of peer-reviewed journal articles (Web of Science search, September 15, 2022) on extant Ethiopian biodiversity (n=745) first-authored by Ethiopian vs. non-Ethiopian scientists by decade between the 1970s and 2020s. Title or author keywords search terms: “Ethiopia* AND ecology OR mammal* OR bird* OR plant* OR insect* OR reptile* OR fish* OR forest* OR invertebrate* OR new species OR amphibian* OR biodiversity”. Articles concerning extinct Ethiopian species and solely on crop plants or domestic animals were excluded from the analysis. Data from which this graph was generated are available in the accompanying data file “Data for Figure S4.xlsx”.