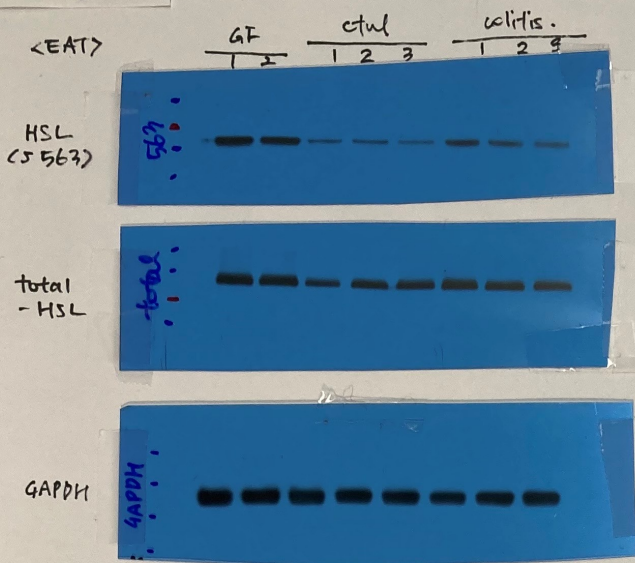
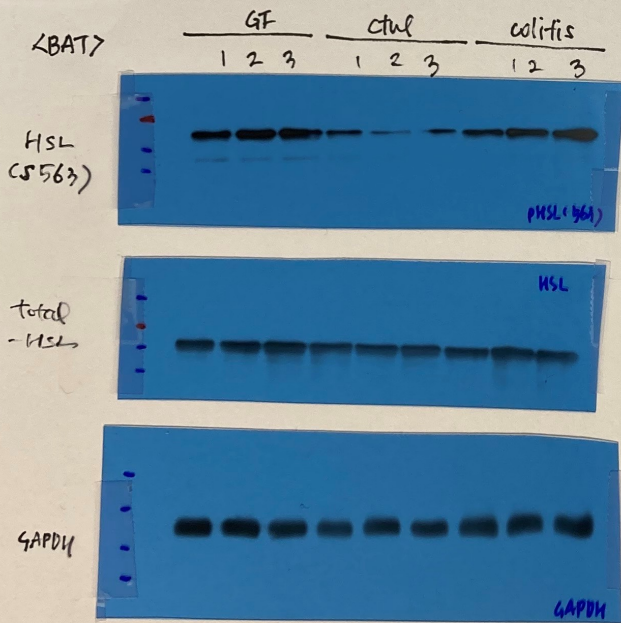


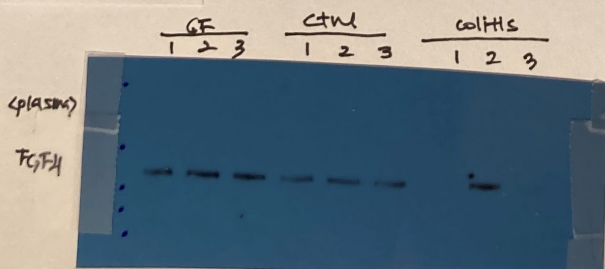
In Fig 2D



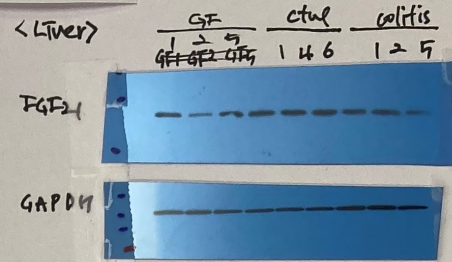
In Fig 2D



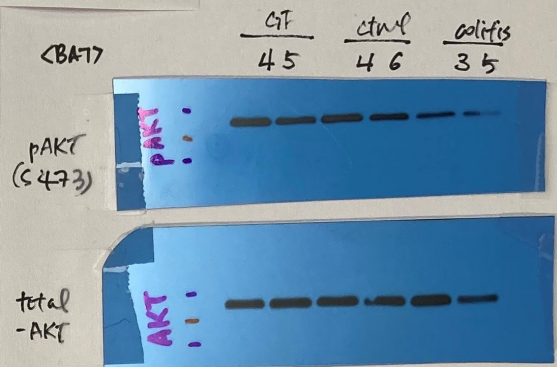
In Fig 2G



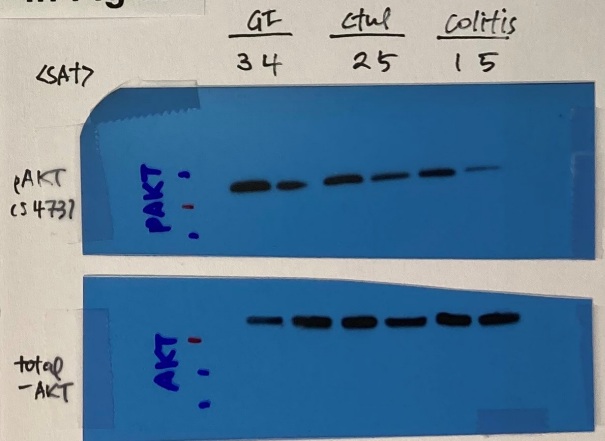
In Fig 3P



In Fig 2I



In Fig 2I



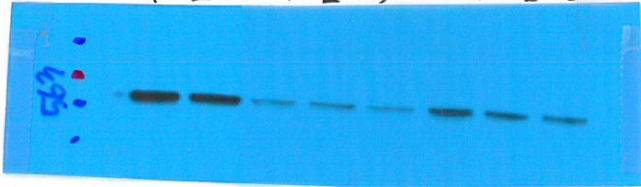
The way we obtained the blot images is as follows;

- 1) After electroblotting, we cut the blot membrane itself into strips. Referring to the position of the size marker, the region corresponding to the position of the protein of interest was cut out.
- 2) In a dark room, we pre-cut the X-ray film to approximately the size of the membrane strip (usually large enough to cover the membrane strip).
- 3) We placed the sheet of pre-cut film on top of the wrapped membrane in a cassette for exposure.

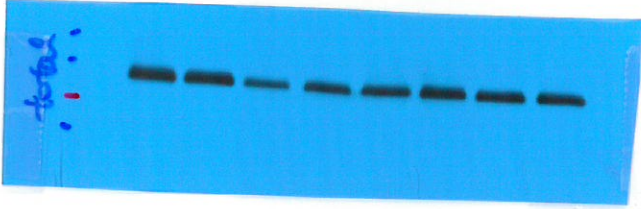
<EAT>

GF			ctl			colitis.		
1	2	3	1	2	3	1	2	3

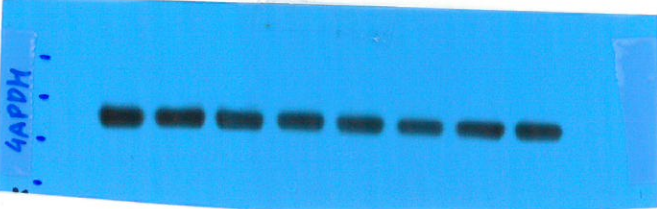
HSL
(5563)



total
-HSL



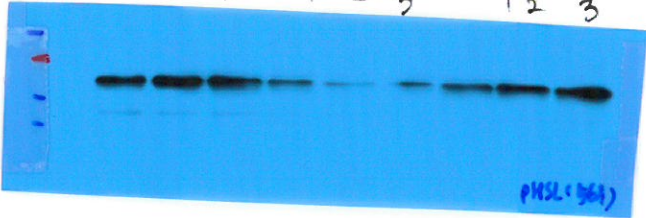
GAPDH



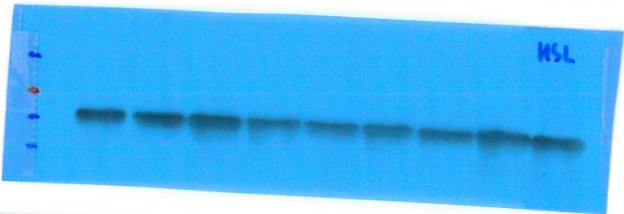
<BAT>

GF			ctl			colitis		
1	2	3	1	2	3	1	2	3

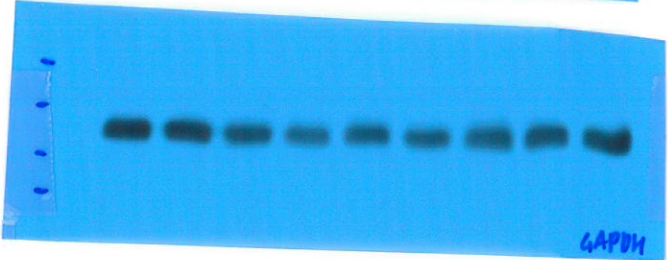
HSL
(5563)



total
-HSL



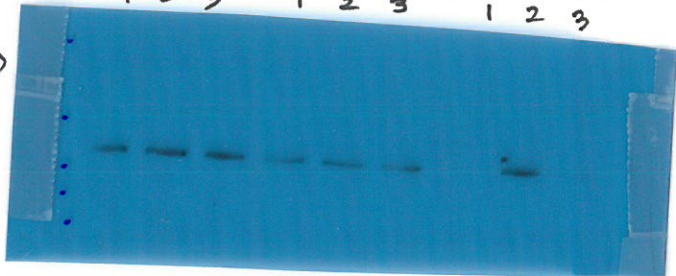
GAPDH



GF			ctl			colitis		
1	2	3	1	2	3	1	2	3

plasma

FCγH



<Liver>

GF	ctul	colitis
1 2 5	1 4 6	1 2 5
GF GF2 GF5		

FGF21



GAPDH



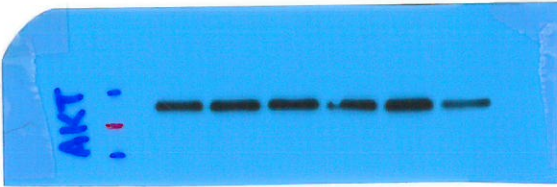
<BAT>

GF	ctul	colitis
4 5	4 6	3 5

pAKT
(S473)



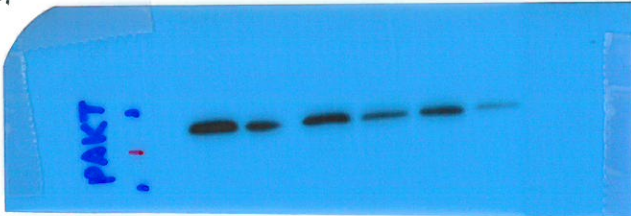
total
-AKT



<SAT>

GF	ctul	colitis
3 4	2 5	1 5

pAKT
(S473)



total
-AKT

