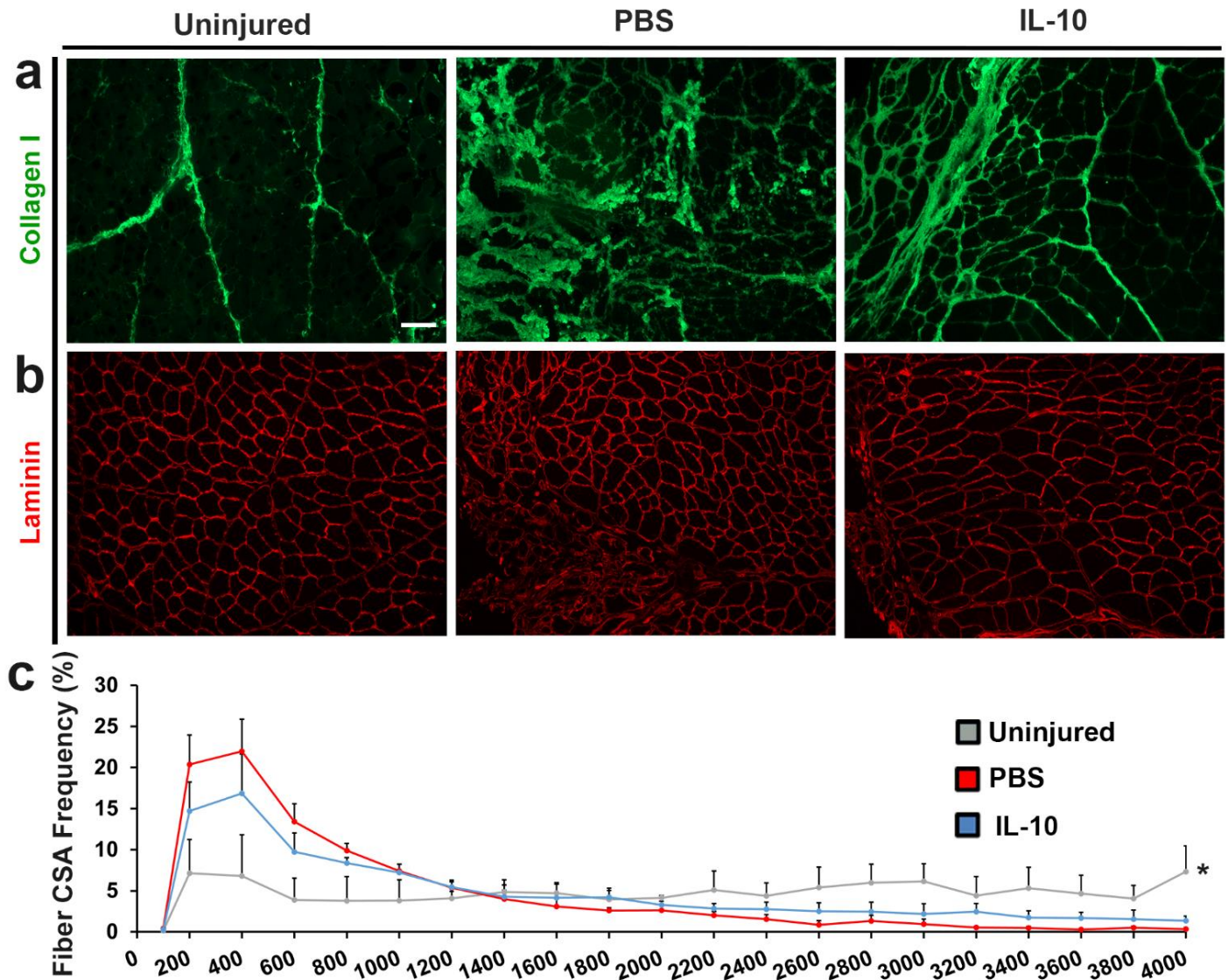


Supplementary figure 1: Selected gene expression for key IL-10 treatment and PBS controls genes with respect to uninjured controls are presented as log ratio (\log_2FC). “ns” indicates no significant difference (FDR > 0.05).



Supplementary figure 2: TA muscle cross-sections were stained for (a) collagen I (green), b) Laminin (red). Representative uninjured (left), 56 days post PBS injection (middle), and IL-10 injection (right) TA cross-sections are presented. Scale bar = 100 μm . Laminin cross-sections were used to quantify for (c) muscle fiber cross-sectional area frequency distribution curve. About 600 fibers from and nearby to injury sites were included per animal, with 4 animals per group. PBS and IL-10 curves display a similar range of CSA values but are statistically different from injured control (Chi-squared analysis with $\alpha < 0.05$). Group means + SD are presented; $n=4/\text{bin}/\text{group}$. The * indicates statistically significant difference between uninjured controls and treatment groups.

Figure 4f ST2

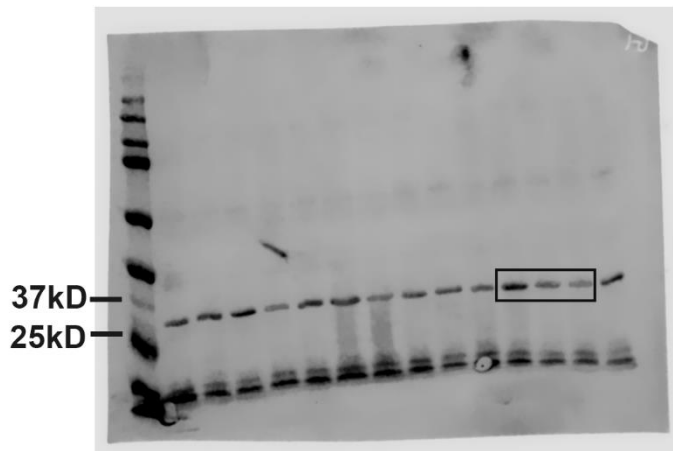
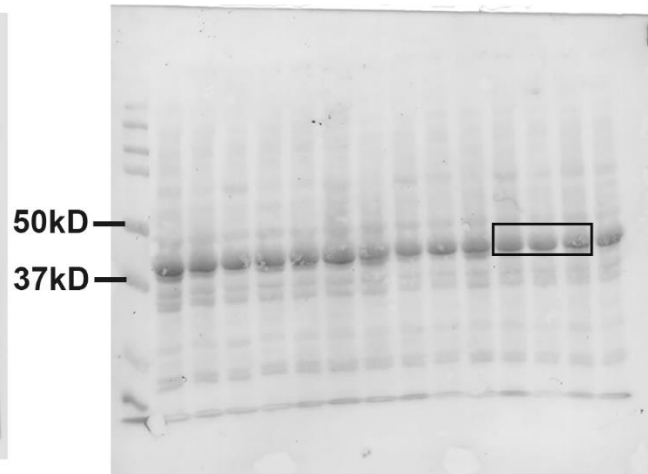


Figure 4f Ponceau



Supplementary figure 3: Original images of Western blots in **Fig. 4f**.