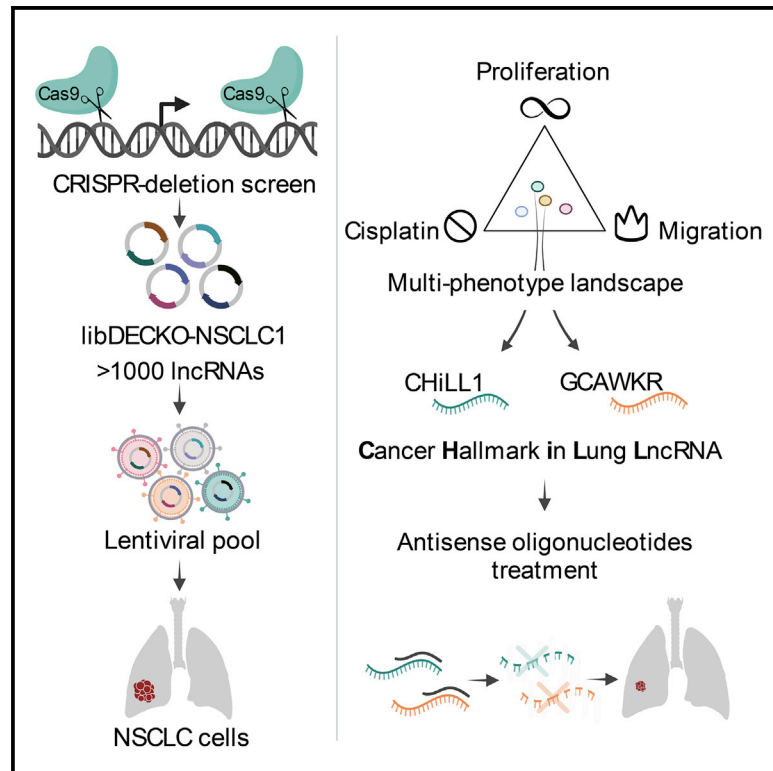


Multi-hallmark long noncoding RNA maps reveal non-small cell lung cancer vulnerabilities

Graphical abstract



Authors

Roberta Esposito, Taisia Polidori, Dominik F. Meise, ..., Adrian F. Ochsenbein, Carsten Riether, Rory Johnson

Correspondence

rory.johnson@ucd.ie

In brief

Esposito, Polidori, and colleagues present a CRISPR-based pipeline to comprehensively map functional long noncoding RNAs across disease hallmarks of KRAS⁺ non-small cell lung cancer. This reveals therapeutic vulnerabilities that could be targeted by potent antisense oligonucleotide inhibitors in a range of tumor models.

Highlights

- CRISPR-based screening pipeline for lncRNAs promoting multiple cancer hallmarks
- Comprehensive, multi-dimensional functional map of lncRNAs in KRAS⁺ NSCLC
- lncRNA vulnerabilities can be targeted by ASOs in 2D and 3D tumor models



Article

Multi-hallmark long noncoding RNA maps reveal non-small cell lung cancer vulnerabilities

Roberta Esposito,^{1,2,3,16} Taisia Polidori,^{1,2,4,16} Dominik F. Meise,^{1,2} Carlos Pulido-Quetglas,^{1,2,4} Panagiotis Chouvardas,^{1,2} Stefan Forster,^{1,2} Paulina Schaerer,^{1,2} Andrea Kobel,^{1,2} Juliette Schlatter,^{1,2} Erik Kerkhof,^{1,2} Michaela Roemmele,^{1,2} Emily S. Rice,⁵ Lina Zhu,^{6,7,8} Andrés Lanzós,^{1,2,4} Hugo A. Guillen-Ramirez,^{1,2,14,15} Giulia Basile,^{1,2} Irene Carrozzo,^{1,2} Adrienne Vancura,^{1,2} Sebastian Ullrich,⁹ Alvaro Andrades,^{10,11,12} Dylan Harvey,¹⁴ Pedro P. Medina,^{10,11,12} Patrick C. Ma,¹³ Simon Haefliger,^{1,2} Xin Wang,⁶ Ivan Martinez,⁵ Adrian F. Ochsenbein,^{1,2} Carsten Riether,^{1,2} and Rory Johnson^{1,2,14,15,17,*}

¹Department of Medical Oncology, Inselspital, Bern University Hospital, University of Bern, Bern 3010 Switzerland

²Department for BioMedical Research, University of Bern, Bern 3008, Switzerland

³Institute of Genetics and Biophysics “Adriano Buzzati-Traverso” CNR, Naples 80131, Italy

⁴Graduate School of Cellular and Biomedical Sciences, University of Bern, Bern 3012, Switzerland

⁵Department of Microbiology, Immunology, and Cell Biology, Morgantown, WV, USA

⁶Department of Surgery, Faculty of Medicine, The Chinese University of Hong Kong, Hong Kong

⁷Tung Biomedical Sciences Centre, City University of Hong Kong, Hong Kong

⁸Key Laboratory of Biochip Technology, Biotech and Health Centre, Shenzhen Research Institute, City University of Hong Kong, Shenzhen 518057, China

⁹Centre for Genomic Regulation (CRG), The Barcelona Institute for Science and Technology (BIST), Barcelona, Catalonia 08003, Spain

¹⁰GENYO, Centre for Genomics and Oncological Research, Pfizer/University of Granada/Andalusian Regional Government, Granada 18016, Spain

¹¹Instituto de Investigación Biosanitaria, Granada 18014, Spain

¹²Department of Biochemistry and Molecular Biology I, University of Granada, Granada 18071, Spain

¹³Penn State Cancer Institute, Hershey, PA 17033, USA

¹⁴School of Biology and Environmental Science, University College Dublin, Dublin D04 V1W8, Ireland

¹⁵Conway Institute for Biomolecular and Biomedical Research, University College Dublin, Dublin D04 V1W8, Ireland

¹⁶These authors contributed equally

¹⁷Lead contact

*Correspondence: rory.johnson@ucd.ie

<https://doi.org/10.1016/j.xgen.2022.100171>

SUMMARY

Long noncoding RNAs (lncRNAs) are widely dysregulated in cancer, yet their functional roles in cancer hallmarks remain unclear. We employ pooled CRISPR deletion to perturb 831 lncRNAs detected in KRAS-mutant non-small cell lung cancer (NSCLC) and measure their contribution to proliferation, chemoresistance, and migration across two cell backgrounds. Integrative analysis of these data outperforms conventional “dropout” screens in identifying cancer genes while prioritizing disease-relevant lncRNAs with pleiotropic and background-independent roles. Altogether, 80 high-confidence oncogenic lncRNAs are active in NSCLC, which tend to be amplified and overexpressed in tumors. A follow-up antisense oligonucleotide (ASO) screen shortlisted two candidates, *Cancer Hallmarks in Lung LncRNA 1 (CHILL1)* and *GCAWKR*, whose knockdown consistently suppressed cancer hallmarks in two- and three-dimension tumor models. Molecular phenotyping reveals that *CHILL1* and *GCAWKR* control cellular-level phenotypes via distinct transcriptional networks. This work reveals a multi-dimensional functional lncRNA landscape underlying NSCLC that contains potential therapeutic vulnerabilities.

INTRODUCTION

Non-small cell lung cancer (NSCLC) is the leading cause of cancer deaths worldwide,¹ and available therapies face a combination of challenges in undruggable mutations, toxicity, and therapy resistance.^{2–4} The most common NSCLC subtype, carrying activating *KRAS* mutations (*KRAS*⁺), is routinely treated with cytotoxic platinum chemotherapy, and newly approved targeted therapies only extend life by a few months.^{5,6}

A fertile source for new therapeutic targets is long noncoding RNAs (lncRNAs), with a population likely to exceed 100,000, of which >98% remain uncharacterised.^{7–10} Hundreds of lncRNAs have been implicated in the progression of disease hallmarks, as defined by Hanahan and Weinberg,^{11,12} across cancer types via a variety of mechanisms.^{13–16} Examples such as *SAMMSON* (melanoma) and *lncGRS-1* (glioma) have attracted attention as drug targets thanks to tumor cells’ potent and specific sensitivity to their inhibition via antisense oligonucleotide (ASO) therapies.^{17,18}



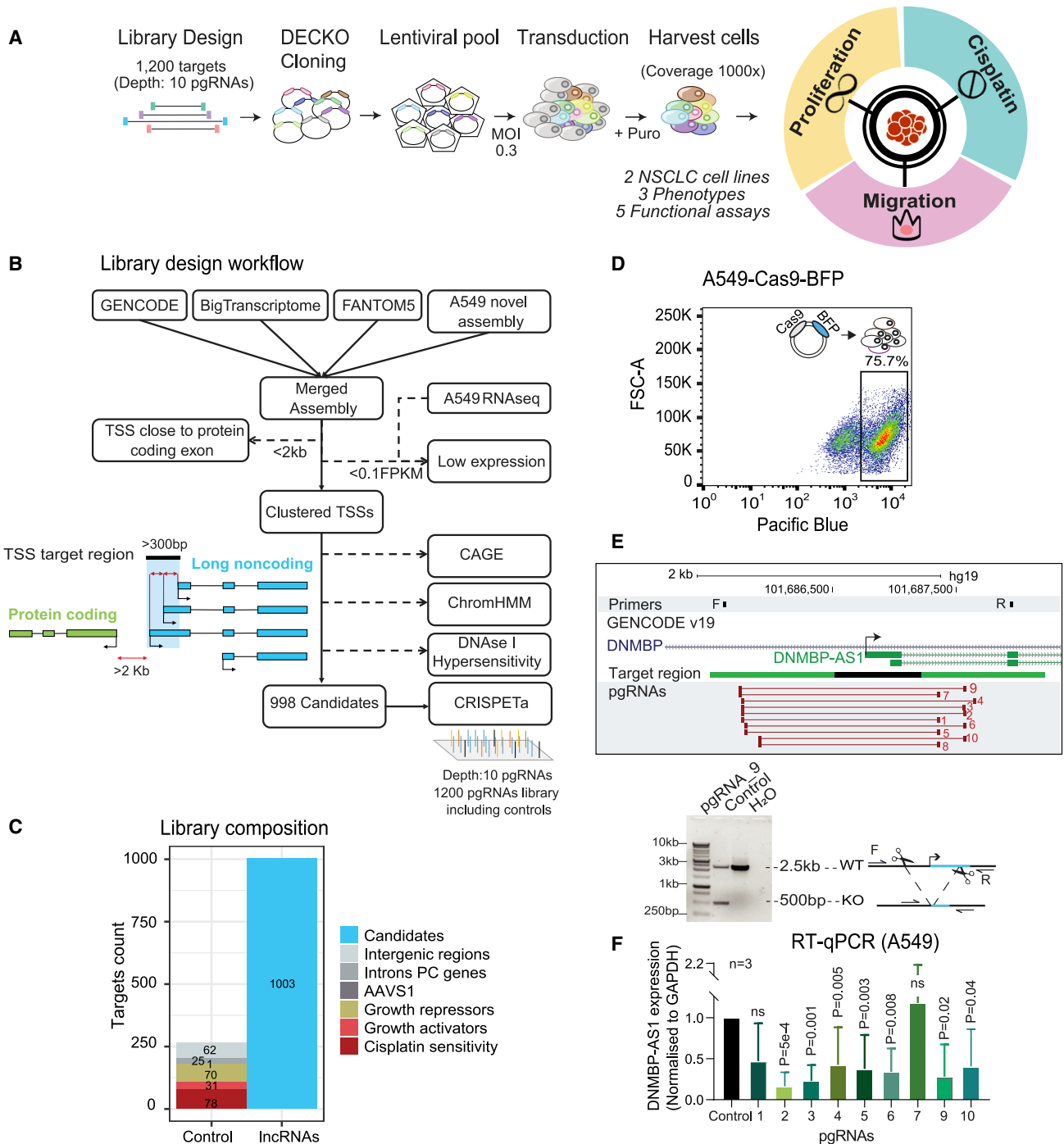


Figure 1. Multi-hallmark CRISPR discovery of lncRNAs promoting non-small cell lung cancer

(A) CRISPR-deletion pooled screening strategy for lncRNAs promoting NSCLC hallmarks.

(B) Library design pipeline. lncRNAs from indicated annotations are merged and filtered by TSS proximity to protein-coding genes (<2 kb excluded) and by expression in A549 (<0.1 FPKM excluded). TSS are clustered together if closer than 300 bp, then selected based on three evidence sources: CAGE, ChromHMM, and DNase I hypersensitivity. TSS candidates are targeted by 10 paired guide RNA (pgRNA) designs using CRISPEta.

(C) Library composition, in terms of targeted regions. Note that some lncRNA loci are represented by >1 targeted transcription start site (TSS).

(D) Fluorescence-activated cell sorting (FACS) was used to sort stable Cas9-expressing cells based on the expression of a blue fluorescent protein (BFP) marker. Boxes indicated the sorted cell populations used in screens.

(legend continued on next page)

Considerable evidence points to the central roles of lncRNAs in lung cancer.¹⁶ For example, *PVT1* and *MALAT1* are recurrently overexpressed or amplified in lung tumors, and their manipulation alters cell growth and invasiveness both *in vitro* and *in vivo*, making them promising therapeutic targets.^{19,20} Other examples include *LINC00680*, which acts via binding to GATA6,^{21,22} and *LINC00511*, which promotes NSCLC by binding chromatin-modifying enzyme EZH2 and repressing tumor-suppressor genes, including p57 and *LATS2*.²³ Nonetheless, the extent and nature of lncRNAs promoting the interlocking pathological hallmarks in NSCLC remain unclear.

Efforts to identify lncRNA therapeutic targets have accelerated with the advent of CRISPR-Cas genome editing, which can be used to silence gene expression via targeted genomic deletions or transcriptional inhibition and is readily scaled transcriptome-wide via pooled screening.²⁴ CRISPR screens have revealed scores of lncRNAs promoting disease hallmarks of cell proliferation, pathway activation, and therapy resistance.^{25–27}

A critical challenge in drug discovery is the poor validation rate of preclinical targets discovered *in vitro*.²⁸ Highly focused single background/single hallmark screen designs, including those above, are vulnerable to discovering lncRNAs promoting cell-line-specific phenotypes that do not generalize to the disease in question.¹⁷ Supporting this, recent CRISPR-inhibition (CRISPRi) screens demonstrated highly specific effects for lncRNAs in cell lines from six distinct cancer types.²⁵ However, the critical question of whether this also affects cell lines from the same cancer type has not been addressed. Thus, to maximize the utility of discovered hits, an ideal screen should prioritize lncRNA targets that are both pleiotropic (impact multiple disease hallmarks) and background independent (effective regardless of cell model).

Here, we comprehensively map the functional lncRNA landscape of *KRAS*⁺ NSCLC. We perform 8 disease-specific CRISPR screens for lncRNAs promoting three cancer hallmarks (proliferation, chemoresistance, and invasion) in two *KRAS*⁺ NSCLC models (A549 and H460). We reconstruct the functional lncRNA landscape of NSCLC, revealing a catalog of therapeutic vulnerabilities. These lncRNAs connect to cancer hallmarks via complex transcriptional networks and can be targeted by potent, low-toxicity, and on-target ASOs, representing promising future therapeutics.²⁹

RESULTS

A versatile CRISPR screening pipeline for lncRNAs in NSCLC

To identify lncRNAs promoting *KRAS*⁺ NSCLC, we adapted the dual-excision CRISPR knockout (DECKO) CRISPR-deletion (CRISPR-del) system to a high-throughput pooled format^{24,30} (Figure 1A). This approach achieves loss-of-function (LOF) per-

turbations by deleting target genes' transcription start sites (TSS) via paired guide RNAs (pgRNAs) and effectively inhibits gene expression.^{31–34} This perturbation strategy based on the deletion of TSSs rather than entire genes offers several benefits, including uniform and shorter deletions (which are more efficient)³⁵ and a reduced chance of false positives arising from deleting overlapping DNA regulatory elements.

We developed a screening library to comprehensively interrogate the NSCLC lncRNA transcriptome. To avoid the known issues of false-positive results that may occur via unintended off targeting,³⁶ we omitted any target regions <2 kb from the nearest protein-coding exon. We integrated and filtered published^{10,37,38} and in-house gene annotations^{39,40} (Figures 1B and S1A), for a final target set of 831 expressed lncRNAs, corresponding to 998 high-confidence TSSs, henceforth named “candidate 1” and so on (Figures 1C and S1B; see STAR Methods). lncRNA candidates with bidirectional promoters or with overlapping TSSs were merged into a single TSS. Taking these cases into account, 95.2% of target regions contain one single lncRNA promoter, while 4.5% and 0.3% contain two and three, respectively (Figure S1D).

To these, we added pgRNAs targeting neutral control loci (not expected to influence cell phenotype) and positive control protein-coding genes (PCGs) (with known roles in cell growth and cisplatin resistance) (Figure 1C).

These targets form the basis for “libDECKO-NSCLC1,” a CRISPR-del library with a depth of 10 unique pgRNAs per target, comprising altogether 12,000 pgRNAs (Figure 1C; Table S1). After cloning into the DECKO backbone (Figure S1C), sequencing revealed high quality in terms of sequence identity (60.8% perfect match across both spacers) and coverage (90th to 10th percentile count ratios: 4.6-fold)⁴¹ (Figure S1F).

To identify hits of general relevance to NSCLC, we performed parallel experiments in two widely used *KRAS*⁺ NSCLC models, A549 and H460.^{42,43} Non-clonal cell lines were generated that stably express high levels of Cas9 protein,⁴⁴ as evidenced by blue fluorescent protein (BFP) (Figures 1D and S1E). Given that the ability of pgRNAs to efficiently generate the desired genomic event has been called into question,⁴⁵ we first performed extensive validation of library pgRNAs. Targeting known NSCLC-promoting lncRNA *DNMBP-AS1* (candidate 331)⁴⁶ resulted in the deletion of its promoter region and loss of expression (Figures 1E, 1F, and S1G), supporting the effectiveness of the CRISPR-del strategy. To more generally assess the impact of our pgRNA strategy, we randomly cloned another 12 pgRNAs targeting 12 candidates. We observed expected deletion at the target site for 10/12 cases. In terms of impact on target RNA levels, we observed expected downregulations for 7/12, while for three targets we observed no change, and for two we observed upregulation (Figure S3A), in line with previous observations from Shkumatava's group.⁴⁷

(E) (Top) One member of the screening library, *DNMBP-AS1*, was targeted by CRISPR-deletion in A549 cells. The gene locus is shown in the top panel, including genotyping PCR primers (F, R) listed in Data S4, TSS target region (black), and library pgRNAs (red bars). (Bottom) PCR using indicated primers with template genomic DNA (gDNA) from cells transfected with non-targeting pgRNA (control) or *DNMBP-AS1* TSS pgRNA_9 (KO). The expected lengths for wild-type and deletion amplicons are indicated.

(F) Quantitative reverse-transcriptase PCR (qRT-PCR) measurement of *DNMBP-AS1* RNA after CRISPR-del.

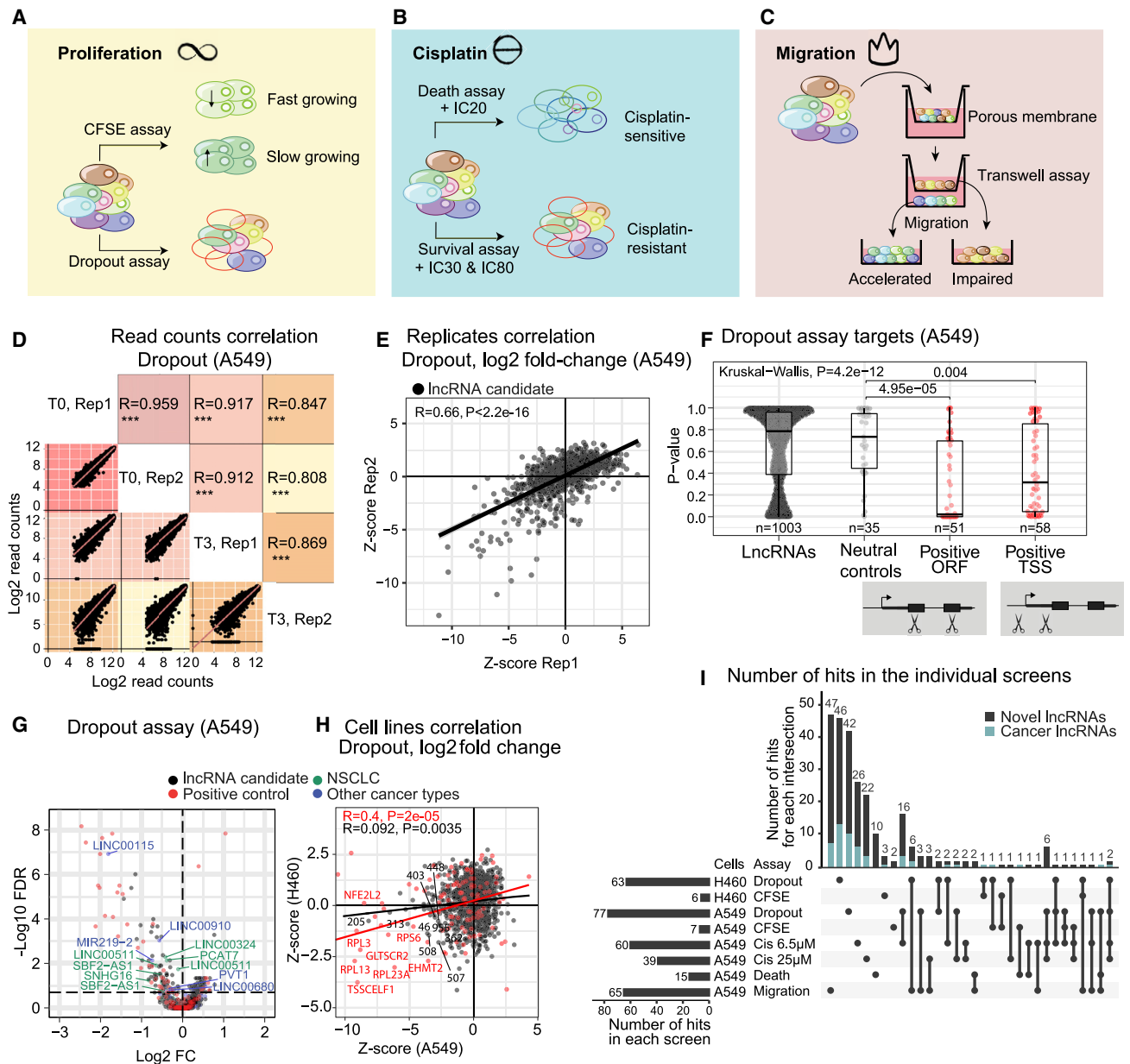


Figure 2. Adapting CRISPR screens to cancer hallmarks

(A) Proliferation: the strategy employs complementary negative (dropout) (growth-promoting lncRNAs' pgrRNAs are depleted) and positive (CFSE dye) (growth-promoting lncRNAs' pgrRNAs are enriched) formats.

(B) Cisplatin sensitivity: another complementary strategy is employed. In the negative (dropout) "survival" screen, cells are exposed to high cisplatin doses (IC30, IC80). Resistance-promoting lncRNAs' pgrRNAs will be depleted in surviving cells. In the positive "death" screen, cells that die in response to low cisplatin concentration (IC20) are collected, and enriched pgrRNAs identify resistance-promoting lncRNAs.

(C) Migration: cells that are capable/incapable of migrating through a porous membrane over a given time are separately collected. Migration-promoting lncRNAs are identified via their pgrRNAs' enrichment in migration-impaired cells.

(D) Read counts correlation of the dropout assay in A549. Log2 of the read counts (T3: 3 weeks; T0: time point zero). Z score-transformed log2 values. Statistical significance: Pearson correlation.

(E) lncRNA candidates (black) correlation between biological replicates of the dropout screen in A549 cells. Data presented as Z score-transformed log2FC values (T3/T0). Statistical significance: Pearson correlation.

(F) P-value distribution of lncRNA candidates and neutral and positive controls in A549 dropout screen. Protein-coding genes used as positive controls are analyzed separately using pgrRNAs targeting the ORF and TSS. Statistical significance: Wilcoxon test (pairwise comparisons) and Kruskal-Wallis (global differences).

(legend continued on next page)

Multi-phenotype mapping of NSCLC lncRNAs

Cancers thrive via a variety of phenotypic hallmarks, or biological capabilities acquired by cells during tumor progression.¹¹ Previous CRISPR screens have been limited to a single hallmark, either proliferation or drug resistance,^{17,25,27,48,49} and have been usually focused on a negative “dropout” format, where pgRNAs for genes of interest are depleted.

For a more comprehensive and biomedically relevant vista of NSCLC lncRNAs, we adapted pooled screening to identify causal genes across multiple hallmarks of cancer progression, namely proliferation, chemoresistance, and invasion (Figures 2A–2C). To boost sensitivity, we implemented complementary “positive” screens, where pgRNAs of interest are enriched. Thus, to identify lncRNAs promoting cell fitness and proliferation, we combined (1) a classical negative selection screen, where targets’ pgRNAs become depleted (“dropout”), with (2) a positive selection screen using carboxyfluorescein succinimidyl ester (CFSE) dye to identify growth-promoting lncRNAs by their pgRNAs’ enrichment in slow-growing cells (Figure 2A).⁵⁰ Complementary screens yielded a modest but consistent benefit in accuracy over pure dropout screens (receiver-operator area under the curve values: A549 proliferation 0.7 versus 0.67, A549 cisplatin 0.77 versus 0.73, respectively); therefore, we decided to include it in subsequent analyses.

We observed a high correlation between biologically independent replicates at multiple levels of data integration, from raw pgRNA read counts (Figure 2D) to pgRNA fold changes and target-level fold changes (Figures 2E and S2A–S2F). These correlations are observed even when considering lncRNA candidates alone and omitting positive-control targets. Our dropout correlations were comparable to previous CRISPR-del dropout⁴⁹ (Figure S2F). As expected, pgRNAs for positive-control genes were significantly depleted in dropout screens, while neutral controls were not (Figure 2F). To gauge the LOF efficiency of promoter deletion, pgRNAs targeting positive-control PCGs had been split between two distinct modalities: (1) conventional open reading frame (ORF) mutation, expected to yield maximal LOF, and (2) promoter deletion, similar to lncRNAs. Promoter-deletion pgRNAs displayed a detectable but lower phenotypic impact, indicating that CRISPR-del screens for lncRNAs face intrinsically lower sensitivity compared with ORF-targeting screens for PCGs (Figure 2F).

Using biologically replicated dropout screens, 77 lncRNAs were identified as necessary for proliferation of A549 cells. These include known NSCLC lncRNAs, such as *PVT1*,²⁰ *SBF2-AS1*,⁵¹ and *LINC00511*,²³ that were also found in H460. In addition, lncRNAs identified in other cancer types include *LINC00680*²¹ and *LINC00910*⁵² (Figure 2G).

The factors influencing pgRNA deletion efficiency are poorly understood. Using growth phenotype as a proxy for deletion efficiency, we observed the expected correlation between

observed and bioinformatically predicted sgRNA efficiency (RuleSet2 algorithm) (Figure S1H). On the other hand, we found no relationship with pgRNA orientation (Figure S1I), and a weak tendency for larger deletions to produce stronger phenotypes, possibly due to a greater impact on lncRNA expression (Figure S1J).

Next, we compared equivalent dropout screens in the two NSCLC backgrounds. There was a significant concordance among identified targets, even after omitting positive controls (Figure 2H). Besides, out of the 109 positive controls included in the library, 37 and 16 scored in the dropout screens of A549 and H460, respectively, of which 10 are common to both ($p = 0.011$, hypergeometric test). To strengthen these data, we performed complementary CFSE screens in the same cells. As expected, these positive selection screens displayed anti-correlation with dropout results in H460 cells, although not in A549 cells, possibly for technical reasons (Figure S2B).

Patients with KRAS⁺ tumors are usually treated with cytotoxic platinum-based chemotherapeutics, but tumors frequently evolve resistance.⁵³ To identify lncRNAs promoting chemoresistance, we again employed complementary screens (Figure 2B) at carefully chosen cisplatin concentrations (Figure S2C). As before, correlated results were observed across biological replicates (Figures S2D and S2F). Migration is a key hallmark underlying the invasion and metastasis of tumor cells. By isolating cells with rapid or slow migration through a porous membrane for 48 h (Figures 2C, S2E, and S2G), we screened for migration-promoting lncRNAs. This yielded 65 lncRNAs, of which ten were already associated with migration and invasion in numerous cancer types¹⁶ including *SNHG6*⁵⁴ and *SNHG12*.⁵⁵

These data, summarized in Figure 2I and Data S1, represent a resource of functional lncRNAs in NSCLC hallmarks.

Screen hits can be validated and function via RNA products

We next tested the reliability of these results by selecting two lncRNA TSSs for further validation, based on their top ranking and consistency between the two cell lines: candidate 205, identified as a top hit in dropout screens (A549: log₂ fold change [FC] = -1.81 , false discovery rate [FDR] = 1.2×10^{-7}), and candidate 509 in both proliferation and cisplatin (A549: log₂FC = -1.15 , FDR = 9.78×10^{-7}).

Candidate 205 overlaps the TSS of bidirectional antisense GENCODE-annotated genes, *LINC00115* and *RP11-206L10.11* (Figure 3A). Candidate 509 targets a TSS shared by several BIGTranscriptome lncRNAs (Figure 3A). Supporting the importance of this locus, it contains two additional hits, candidate 507 (*LINC00910*) and candidate 508 (Figure S2H).

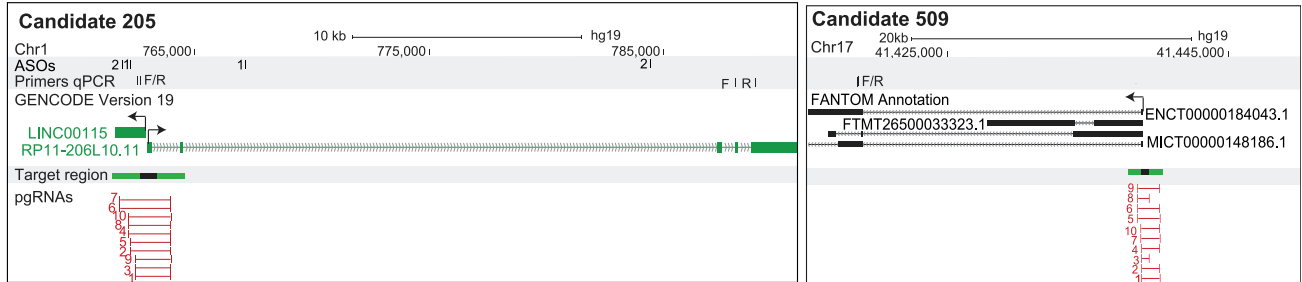
To validate the phenotypic effect of these deletions, we tested randomly selected high-scoring pgRNAs (Figure 3B, arrow). Candidate 205 pgRNA efficiently deleted the targeted region

(G) A549 dropout screen. The horizontal line indicates the cutoff for hits at FDR <0.2. Previously published lncRNAs in NSCLC and other cancers are labeled in green and blue, respectively.

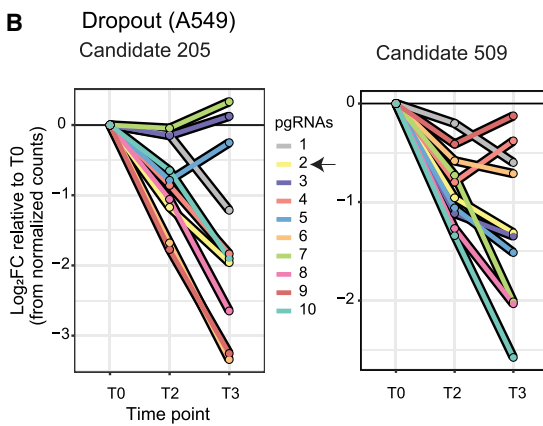
(H) Comparison of A549 and H460 dropout screens (four points removed for clearer visualization, statistical significance estimated on all the data points using Pearson correlation).

(I) Analysis of lncRNA hits that have potential impacts on the described phenotypes by screens in A549 and H460 cells with FDR <0.2. The light blue bar indicates the fraction of previously discovered “cancer lncRNAs” from the CLC2 database.¹⁶

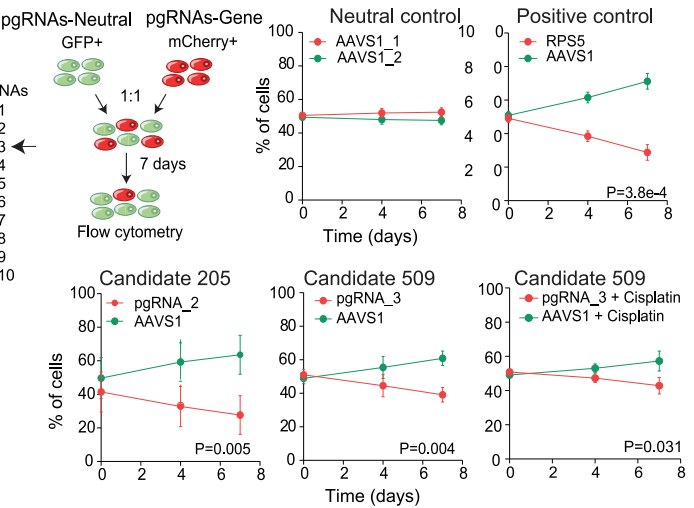
A



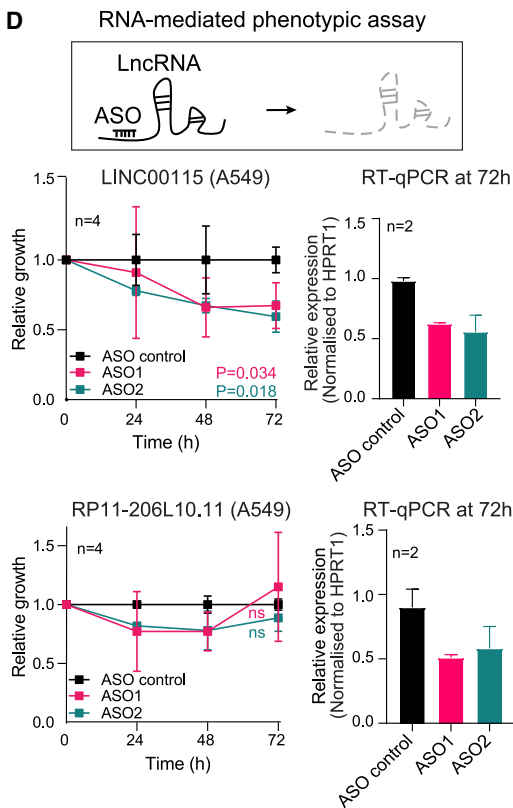
B



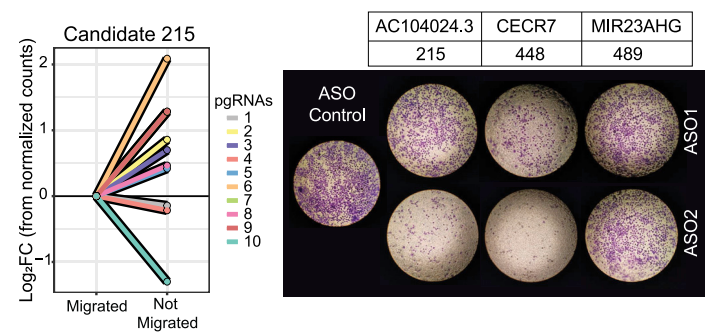
C Competition assay (A549)



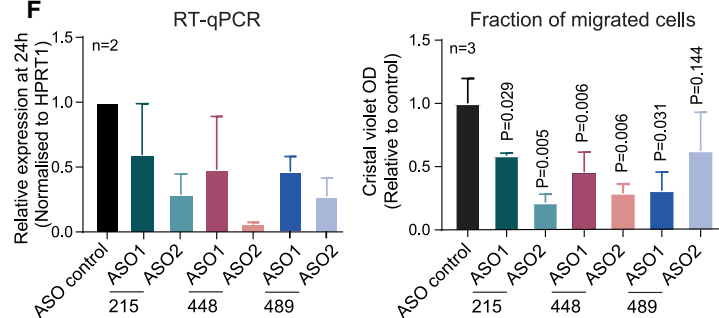
D



E Migration assay (A549)



F



(legend on next page)

(Figure S2I), and while difficulty in designing PCR primers prevented direct testing of deletion by candidate 509, it effectively decreased RNA levels (Figure S2J). Both pgRNAs yielded potent effects on cell fitness: mCherry⁺ cells expressing pgRNAs were out-competed by control cells (GFP⁺, expressing pgRNA for *AAVS1*), with an effect comparable to inactivation of essential ribosomal gene *RPS5* (Figures 3C and S2K). Similar results were observed in a conventional growth assay (Figure S2L). Furthermore, the pgRNA for candidate 509 also sensitized cells to cisplatin, consistent with screen results (Figure 3C).

It remained ambiguous which of the two genes overlapping the candidate 205 region is responsible for these effects. Furthermore, genomic deletion cannot distinguish between DNA-dependent (e.g., enhancer) or RNA-dependent mechanisms (e.g., mature lncRNA, or its transcription). To address both questions, we used two gene-specific ASOs to target each gene. This reveals the implication of *LINC00115*, but not *RP11-206L10.11*, in driving cell proliferation via an RNA-dependent mechanism⁵⁶ (Figure 3D). These effects were further corroborated in a three-dimensional (3D) spheroid model (Figure S2M). These results are consistent with previous reports linking *LINC00115* to lung cancer proliferation and migration^{54,57} as well as to other malignancies. For instance, its knockdown suppresses cell proliferation and invasion in breast cancer⁵⁸ and prostate cancer,⁵⁹ and it could inhibit colon rectal cancer cells' metastatic ability and cell growth.⁶⁰

Similar high validation rates were observed for the migration screens. ASO knockdown of three hits, candidate 215 (*AC104024.3*), candidate 448 (*CECR7*), and candidate 489 (*MIR23AHG*), resulted in dramatic impairment of A549 migration (Figures 3E and 3F).

In summary, these findings support the ability of CRISPR-del screens to identify lncRNA genes that promote cancer hallmarks via RNA-dependent mechanisms.

Multi-hallmark screen integration for target discovery

We next integrated these data into a quantitative and comprehensive map of lncRNAs driving NSCLC hallmarks. To combine diverse screen results while balancing effect size and significance, we created an integrative target prioritization pipeline (TPP) (Figure 4A). TPP can either be run on all screens for a “pan-hallmark” target ranking or for individual hallmarks

(“hallmark-specific”; see STAR Methods). The pan-hallmark ranking outperforms common integration methods and individual screens in correctly classifying positive and neutral controls (Figure 4B).

The hallmark-specific values provide a signature for each lncRNA in three functional dimensions, in the context of overall confidence defined by pan-hallmark ranking (Figure 4C). Pan-hallmark analysis alone identified altogether 80 lncRNA hits (~8% of those screened; Data S2) (FDR <0.2), of which 73 were not previously linked to NSCLC (Figure 4D). As expected, growth-promoting PCG positive controls and known lung cancer lncRNAs, but not neutral controls, are enriched among hits. This is supported by an independent enrichment score analysis (Figure S3C). Hallmark-specific integration yielded 134 hits (~13% of those screened) in at least one hallmark, of which 19 are found in two hallmarks, and none in three (Figure S3D).

Previous CRISPR screens have demonstrated that lncRNAs required for cell growth have highly cell-type-specific activities.²⁵ Indeed, comparing lncRNA hits from conventional dropout analysis in A549 and H460 backgrounds revealed a low degree of concordance—lncRNAs tend to only display activity in the cell type where they were discovered (Figure 4E, left). In contrast, pan-hallmark hits display relatively background-independent activity, being active in both cell types (Figure 4E, right), thus supporting the usefulness of an integrative screening strategy combining multiple cell lines for discovering therapeutic targets.

Several additional lines of evidence support oncogenic roles for screen-hit lncRNAs. Cancer-promoting lncRNAs are expected to be upregulated in tumors.^{62,63} Consistent with this, pan-hallmark hits are significantly higher expressed than non-hits in KRAS⁺ lung tumors (Figure 4F) and are upregulated in tumors compared with adjacent tissue (Figure 4G). Furthermore, screen hits tend to be amplified, but not depleted, in DNA from tumors (Figures 4H and S3E) and cell lines (Figure S3F).

In summary, the integration of diverse screens yields accurate maps of functional lncRNAs that are enriched for meaningful clinical features and display cell background-independent activity.

RNA therapeutics targeting NSCLC lncRNAs

Multi-hallmark lncRNA maps are a resource of targets for therapeutic ASOs.^{64–66} We manually selected nine lncRNAs from

Figure 3. Validation of screen hits shows reproducible phenotypes

(A) Candidate 205 (left) and candidate 509 (right) loci. Primers and ASO sites are indicated above. The TSS target region and the 10 pgRNAs from the screening library are indicated below.

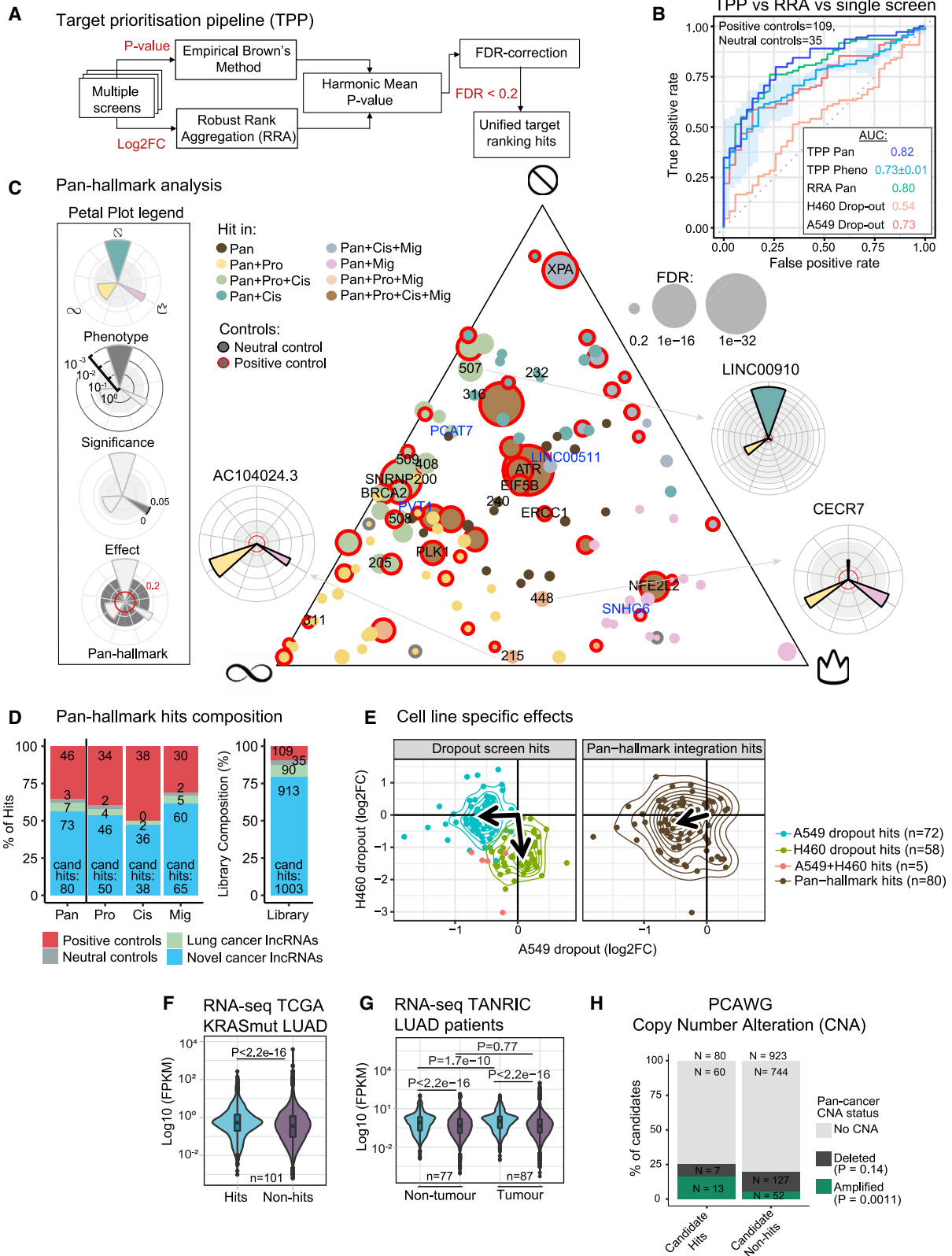
(B) Log₂ fold change of pgRNA count over the course of the dropout screen in A549. T0: time point zero; T2: time point 2 weeks; T3: time point 3 weeks. Arrows indicate the pgRNAs that were randomly chosen and individually cloned for validation.

(C) Competition assay. Fluorescently labeled cells carrying pgRNAs for control *AAVS1* locus (green, GFP) or indicated targets (red, mCherry) were measured by flow cytometry over time (days). pgRNAs targeting the ORF of essential ribosomal protein *RPS5* were used as a positive control. n = 3, error bars indicate SD statistical significance was estimated by Student's t test at the last time point.

(D) ASOs were used to separately target the two lncRNAs sharing the TSS at candidate 205. For each, two different ASOs were employed (1 and 2) in A549 cells. Top panels: *LINC00115*; bower panels: *RP11-206L10.11*. Cell population (left); RNA expression (right) measured by qRT-PCR after 72 h from the ASO treatment. n = 4; error bars indicate SD significance was estimated by one-tailed Student's t test.

(E) (Left) Log₂ fold change of pgRNAs in migrated and non-migrated cell populations from A549 migration screen. (Right) Validation experiments with A549 cell migration across transwell supports over 24 h. Cells were treated with ASOs targeting indicated lncRNAs or a non-targeting control.

(F) (Left) qRT-PCR in A549 cells treated with two distinct ASOs each for candidates 215, 448, and 489. Expression was normalized to a non-targeting ASO. (Right) Crystal violet quantification normalized to non-targeting ASO. Data are plotted as mean ± SD from three independent biological replicates. Statistical significance was estimated by one-tailed Student's t test.



(legend on next page)

top-ranked hits based on criteria of novelty and lack of protein-coding evidence and henceforth referred to as “Tier 1.” Seven are annotated by GENCODE, and two by either FANTOM CAT or BIGTranscriptome (Table S2). For each candidate, we designed a series of ASOs and managed to identify at least two independent ASOs with $\geq 40\%$ knockdown potency (Figure S4A).

Next, we tested ASOs’ phenotypic effects, in terms of proliferation and cisplatin sensitivity (Figure 5A). For five lncRNAs (Tier 2), we observed reproducible loss of cell proliferation with two distinct ASO sequences, indicating on-target activity.⁶⁷ To check how broadly applicable these effects are, we retested the ASOs in two other KRAS⁺ NSCLC cell lines, H460, and H441 (derived from a pericardial effusion metastasis), and observed similar results (Figure 5A). Consistent with their effects on cisplatin sensitivity, Tier 2 genes’ expression is upregulated in response to cisplatin treatment (Figure S4B). Using the expression data from The Cancer Genome Atlas (TCGA) dataset, we noted that Tier 2 lncRNAs are overexpressed in NSCLC tumors, despite this not being a selection criterion (Figure 5B).

It has been proposed that targeting lncRNAs could cause lower side effects in healthy tissue, although few studies have tested this.¹⁷ We evaluated Tier 2 ASOs’ effects on a panel of non-transformed lung-derived cells: HBEC3-KT, MRC5-CV1 (both immortalized), and CCD-12Lu (primary). These cells displayed diminished or absent response, particularly for the first two candidate lncRNAs (Figure 5A). Consequently, we narrowed our focus to these Tier 3 lncRNAs: candidate 42 (ENSG00000253616), henceforth renamed *Cancer Hallmark in Lung LncRNA 1 (CHILL1)*, and candidate 240 (ENSG00000272808; *GCAWKR*).⁶⁸ Both have low protein-coding potential (Figure S4D). Replication experiments confirmed the knockdown potency and phenotypic impacts using both CRISPR-del approach with multiple pgRNAs (Figure S3B) and, more importantly, two independent ASOs for each gene (Figures 5C, S4C, and S4E). ASOs displayed activity in additional KRAS⁺ and *EGFR*-mutant cell lines, suggesting subtype-independent activity (Figure S4F). On the other hand, overexpression

of neither *CHILL1* nor *GCAWKR* could rescue ASO-induced phenotypes (Figure S5C). This may be the result of *cis*-regulatory mechanisms, although we did not observe such an effect for the nearest neighbor of *CHILL1*, *TNFRSF10B* (Figure S5B). An additional plausible explanation is that these lncRNA loci act via functional transcript isoforms that remain unannotated and were not tested here.

CHILL1 has, to our knowledge, never previously been implicated in cancer. It is located on Chromosome 8 and consists of two annotated isoforms, sharing the first exon (Figure 5D, top panel). The GENCODE annotation may commence slightly downstream of the true TSS, as evidenced by various transcriptomic evidence, but the latter falls within the region targeted by CRISPR-del and hence is unlikely to affect the screening outcome (Figure S5A). It is localized upstream and on the same strand of the PCG *TNFRSF10B*, previously associated with NSCLC,⁶⁹ although we find no evidence for readthrough transcription between the two loci as shown by annotated expressed sequence tags (ESTs) (Figure S5A) and RT-PCR (Figure S5B). Supporting its relevance, high expression of *CHILL1* correlates with poor overall survival (Figure S4G).

GCAWKR (Chr15) comprises four isoforms sharing a common TSS (Figure 5D, bottom panel), which is supported by diverse evidence including full-length long-read sequencing⁷⁰ (Figure S5D). It is associated with poor prognosis in colon cancer⁷¹ and, during the preparation of this paper, was reported to be an oncogene in gastric cancer.⁶⁸ It has a likely ortholog in mouse, the uncharacterized Gm44753 (Figure S5H). In contrast to *CHILL1*, the locus of *GCAWKR* is frequently amplified in cancer genomes (Figure S5F). In TCGA samples, *GCAWKR* expression is upregulated in the proximal inflammatory (PI) tumor subtype, which is associated with poorer prognosis (Figures S4H and S4I; PI versus PP: $p = 4 \times 10^{-5}$; PI versus TRU: $p = 0.008$).

3D *in vitro* models represent a more faithful tumor model compared with monolayer cultures.^{72,73} We delivered *CHILL1* and *GCAWKR* ASOs to spheroid cultures of H441 cells and observed a reduction in viability approaching that of the positive control, mTOR (Figures 5E and S4J).

Figure 4. Functional landscape of lncRNAs in NSCLC

- (A) Target prioritization pipeline (TPP) integrates multiple screens to generate a unified hit ranking. TPP employs both effect size (robust rank aggregation [RRA]) and statistical significance (empirical Brown’s method). TPP Pan, TPP target prioritization pipeline integrating the screens together; TPP pheno, target prioritization pipeline that integrates multiple screens of a specific cancer phenotype (i.e., proliferation or cisplatin response).
- (B) Comparing performance of screens and integration methods. Performance is measured as the area under the ROC curve (AUC) based on correctly recalling/rejecting library controls (positive and neutral controls, respectively).
- (C) Ternary plot contains all significant hits ($FDR < 0.2$) in pan-hallmark analysis. The three corners represent the hallmarks, indicated by symbols. The proximity to each corner is driven by the TPP significance calculated for each hallmark. The candidates selected for further validations and protein-coding controls are indicated by candidate number or gene name, respectively. Selected lncRNAs previously associated with lung adenocarcinoma (LUAD) are labeled in blue. Petal plots display the hallmark contributions of selected lncRNAs.
- (D) The number of hits discovered in pan-hallmark and individual hallmark screens. Right: the target composition of the screening library for comparison. “Lung cancer lncRNAs” indicate previously published, functionally validated lncRNAs in lung cancer.¹⁶ Pro, proliferation; Cis, cisplatin; Mig, migration; Pan, pan-hallmarks, integration of all the screens together.
- (E) Scatterplot showing the correlation of the dropout assay hits (left) and the pan-hallmark hits (right) in H460 and A549. The arrows point to the geometric median of the respective group.
- (F) Expression of pan-hallmark hits compared with all other screened lncRNAs (non-hits) in the KRAS⁺ samples from The Cancer Genome Atlas (TCGA) LUAD cohort ($n = 101$). Statistical significance was estimated by one-tailed Welch’s t test.
- (G) Expression of pan-hallmark hits compared with non-hits in an independent cohort of LUAD samples and healthy tissues (87 tumor; 77 normal).⁶¹ Statistical significance: pairwise two-tailed Student’s t test.
- (H) Pan-cancer recurrent amplifications and deletions, estimated in Pan-Cancer Analysis of Whole Genomes (PCAWG) cohort. Statistical significance: Fisher’s exact test (one-sided).

Organoids derived from patient-derived xenografts (PDXs) recapitulate the therapy response of individual patients.⁷⁴ Delivery of *CHILL1* ASOs resulted in a significant reduction in cell viability of KRAS⁺ human NSCLC BE874 organoids (Figure 5F).

We were curious whether simultaneous targeting of two or more distinct vulnerabilities, via “cocktails” of ASOs, might offer synergistic benefits. Indeed, a 50:50 cocktail of *CHILL1*/*GCAWKR* ASOs (Tier 3 cocktail) displayed a greater effect on cell viability compared with an equal dose of either ASO alone (Figures 5G and S4K). A five-ASO cocktail for Tier 2 lncRNAs yielded a similar benefit (Figure 5G). Interestingly, cocktails resulted in no additional toxicity for non-cancerous cells (Figure S4L), suggesting that they might represent a therapeutic strategy for increasing potency at no cost of toxicity.

Finally, we asked what fraction of patients might benefit from ASO treatment. RNA sequencing (RNA-seq) data for TCGA tumors indicates that 78% express at least one of *CHILL1* and *GCAWKR* and might be treated by the Tier 3 cocktail, which rises to 92% for Tier 2 (Figure 5H).

Together, these results demonstrate that Tier 3 lncRNAs can be targeted by potent and low-toxicity ASOs, which may be beneficial alone or in combination for the majority of NSCLC cases (Figure 5H).

CHILL1 and GCAWKR ASOs regulate cancer hallmarks via distinct modes of action

We next investigated the modes of action linking NSCLC hallmarks to *CHILL1* and *GCAWKR*. *CHILL1* exons lack obvious functional elements (Figure S5E), whereas *GCAWKR* contains numerous conserved sequences and structures (Figure 6A), hinting at potential functional elements. Subcellular localization yields important mechanistic clues for lncRNAs.⁷⁵ Surprisingly, despite their similar oncogenic roles, fluorescence *in situ* hybridization (FISH) revealed contrasting localization patterns: *CHILL1* is located principally in the cytoplasm, and *GCAWKR* in the nucleus (Figure 6B). Specificity was validated by knockdown (Figure S5G), and results were further corroborated by cell fractionation (Figure 6C).

To gain more detailed mechanistic insights, we used molecular phenotyping by RNA-seq to quantify the transcriptome of

A549 cells perturbed by *CHILL1* ASOs.⁷¹ *CHILL1* expression in control cells was 8.3 transcripts per million (TPM), equivalent to ~4 molecules per cell and consistent with FISH.⁷⁷ RNA-seq confirmed ASO knockdown efficiency (Figures 6D and S6A), and resulting transcriptome changes were highly correlated between ASOs, indicating that the majority of effects arise via on-target perturbation of *CHILL1* (Figure 6E). A similar correlation was observed in H460 cells (Figure S6B). The generality of *CHILL1*-dependent expression changes was further confirmed by correlated expression changes between A549 and H460 (Figure S6C).

We explored perturbed genes by enrichment analysis. Defining high-confidence target gene subsets from the intersection of both ASOs, we identified enriched KEGG terms⁷⁸ (Figures 6F and S6D). These underscored disease relevance (e.g., “non-small cell lung cancer”) and also implicated potential mechanistic pathways (MAPK, PI3K-Akt), and the high degree of concordance between the two cell backgrounds again supported the generality of *CHILL1* effects across KRAS⁺ NSCLC cells.

A similar analysis of the Molecular Signatures Database (MSigDB)⁷⁹ implicated p53 and mTORC1 signaling (Figure S6E). Numerous transcription factor binding sites (TFBS) are enriched in changing genes, including *ZBTB7A* (in both A549 and H460)^{80,81} (Figure S6F). Interestingly, *ZBTB7A* has been reported as both an oncogene and tumor suppressor that regulates processes including apoptosis and glycolysis.^{82–85}

Among the cell-type-independent enriched KEGG pathways was “apoptosis” (Figure 6F). Supporting this, knockdown of *CHILL1*, but not *GCAWKR*, resulted in a significant increase of early apoptotic cells (Figure 6G).

Turning to *GCAWKR* (mean expression 2.5 TPM, ~1 copy per cell), we observed effective knockdown and cell-type-independent effects using a single ASO (Figures 6H, 6I, and S6G). Gene enrichment analysis revealed partially overlapping terms with *CHILL1* (including p53 pathway, cholesterol homeostasis, and epithelial to mesenchymal transition). Among the *GCAWKR*-specific terms, we noticed several related to cell-cycle progression, including “G2-M checkpoint” (Figure 6J). Indeed, knockdown of *GCAWKR*, but not *CHILL1*, led to an increase of cells in the G2 phase (Figure 6K). *GCAWKR* targets

independent ASO sequences (1 and 2, below). *MALAT1* lncRNA is used as positive control whose knockdown is expected to decrease viability. “Normal” cells are non-transformed cells of lung origin.

(B) Expression of tier 2 lncRNAs—*CHILL1*, *GCAWKR*, candidate 205 (*LINC00115*), candidate 507 (*LINC00910*)—in TCGA RNA-seq. LUAD: 513 samples; normal: 59 samples. Statistical significance estimated by Student’s *t* test; *****p* < 0.0001. Data were not available for candidate 215 in the TCGA dataset.

(C) A549 cell growth upon transfection with two independent ASOs. Results are normalized to non-targeting control ASO (n = 4 biological replicates; error bars: SD statistical significance: two-tailed Student’s *t* test).

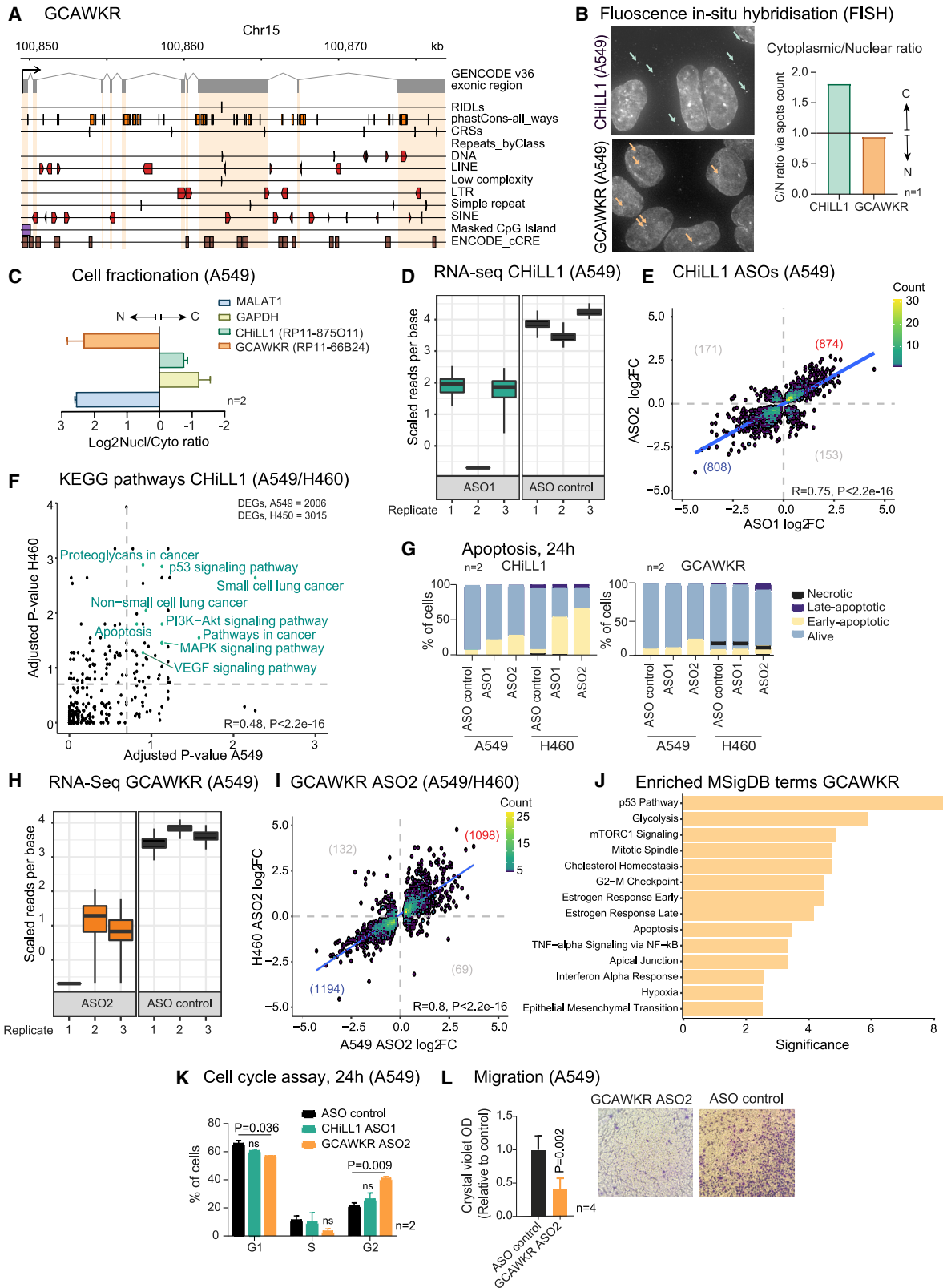
(D) Genomic loci encoding *CHILL1* (top panel) and *GCAWKR* (bottom panel).

(E) (Left) Viability of H441 spheroid cultures 7 days after ASO transfection (25 nM). mTOR ASO was used as a positive control (n = 4 biological replicates; error bars: SD; one-tailed Student’s *t* test). (Right) Representative images (Leica DM IL LED Tissue Culture Microscope).

(F) Viability of independent replicates of BE874 organoids grown from a single KRAS⁺ patient-derived xenograft after *CHILL1* ASO transfection. The error bars represent the variability of technical replicates, while the biological replicates are indicated on the bottom (n = 4 biological replicates; n > 3 technical replicates; error bars: SD; one-tailed Student’s *t* test).

(G) ASO cocktails. (Top) For all experiments, the total amount of ASO did not vary (25 nM). Cocktails were composed of equal proportions of indicated ASOs. (Bottom) A549 cell populations, normalized to non-targeting ASO (n = 4 biological replicates; error bars: SD; statistical significance: one-tailed Mann-Whitney test).

(H) Expression of Tier 2 lncRNAs in KRAS⁺ LUAD tumors (TCGA, n = 101). Each cell represents a patient and is colored to reflect expression as estimated by RNA-seq (expression defined as >0.5 FPKM). At the bottom is the percentage of patients with at least one lncRNA from the indicated cocktails.



(legend on next page)

are also enriched for migration genes, and knockdown led to impaired cell migratory capability (Figure 6L).

Interestingly, we notice that *GCAWKR* knockdown resulted in a significant upregulation of *CHILL1*, but not vice versa, (Figure S6H), explaining the additive effect on cell viability observed with the *CHILL1/GCAWKR* ASO cocktail (Figure 5G).

Together, these data establish that *CHILL1* and *GCAWKR* promote cancer hallmarks via widespread, non-overlapping downstream gene networks and support the on-target basis for ASO activity.

DISCUSSION

We have mapped the functional lncRNA landscape across hallmarks and cell backgrounds in the most common KRAS⁺ subtype of NSCLC. This led us to lncRNA targets with pleiotropic oncogenic roles across a range of 2D and 3D models from primary and metastatic tumors, representing a promising foundation for future RNA therapeutics (RNATX).

Pooled CRISPR screening is emerging as a powerful tool for target discovery in RNATX thanks to its practicality and versatility.⁸⁶ It avoids the capital investment and expertise required for arrayed screening,⁸⁷ where bespoke ASO libraries would have to be created specifically for lncRNAs expressed in every cell/disease model, would be prohibitively expensive at the current market rates and unable to adapt to dynamically evolving lncRNA annotations. CRISPR also delivers improved perturbation and on-target rates compared with short hairpin RNA (shRNA). CRISPR screening libraries can be rapidly generated, enabling projects to keep pace with evolving lncRNA annotations to identify new, disease-specific targets. By directly identifying lncRNAs via their cell-level function, it represents a welcome addition to widely used, indirect evidence like survival, mutation, differential expression, or evolutionary conservation.^{19,88} Indeed, it was encouraging to observe

concordance between these signatures and screen hits. Nonetheless, key barriers to entry remain, notably the lack of available screening libraries, making the libDECKO-NSCLC1 library a valuable resource for future discovery.

Through its integrative strategy, this work sets new standards. Previous studies typically screened a single cell line with a single hallmark (often proliferation) and in a single format (often dropout).^{25,27,89} Internal benchmarking here highlighted the risks of this approach, in identifying hits whose activity is specific to that cell background alone. We mitigated this with parallel screens in distinct but matched cell backgrounds, and the resulting hits could be validated in several additional models and mutational subtypes. To identify pleiotropic hits, we performed parallel screens in multiple phenotypic dimensions and both positive and negative formats. The latter produced marginal improvements in accuracy, although this benefit should be considered in light of the extra resources required. The resulting challenge of integrating diverse screen data was solved by developing the simple yet robust TPP pipeline that balances effect size and significance. Overall, the combination of multiple screens with TPP yielded improved performance compared with conventional approaches.

The result is a unique functional panorama of lncRNAs in a single cancer type. Given the paucity of global-level functional lncRNA maps,^{25,71} this dataset represents an invaluable resource for understanding both the basic biology of lncRNAs and their roles in cancer. Overall, our data implicate approximately 8% of lncRNAs with cell-level functions, comparable to Liu's and Zhu's estimates.^{25,49} The conceptual and experimental configuration will have a broad application for other diseases and biological systems.

This resource enabled us to narrow down nine lncRNAs for ASO development, from which we identified a pair of oncogenic lncRNAs, *CHILL1* and *GCAWKR*, with particularly promising characteristics as therapeutic targets. Firstly, replication

Figure 6. *CHILL1* and *GCAWKR* drive distinct but overlapping oncogenic pathways

- (A) Genomic elements in *GCAWKR* exons (gray rectangles) and introns. Strand is indicated by element direction, where appropriate. The plot was generated with ezTracks.⁷⁶
- (B) Confocal microscopy images of RNA-FISH performed with *CHILL1* and *GCAWKR* probe sets in A549 cells. Selected lncRNA foci are arrowed. Nuclear/cytoplasmic (N/C) quantification of *CHILL1* and *GCAWKR*.
- (C) Ratio of concentrations of indicated RNAs as measured by qRT-PCR in nuclear/cytoplasmic fractions of A549 cells. *MALAT1* and *GAPDH* are used as nuclear and cytosolic controls, respectively.
- (D) Expression of *CHILL1* as quantified in the three RNA-seq replicates from A549 RNA. The y axis represents the normalized expression (counts) per nucleotide, and the boxplots show the variance of inference using bootstraps generated by Kallisto.
- (E) Fold change in gene expression in response to *CHILL1* knockdown by ASO1 and ASO2 in A549 cells. Statistical significance: Pearson correlation coefficient. Trendline depicts regression line. Numbers indicate genes in each quadrant.
- (F) Statistical enrichment of KEGG pathways among DEGs resulting from *CHILL1* knockdown. Genes significantly affected in common by ASO1 and ASO2 were included for each cell line. Cancer-relevant pathways that are significant for both cell lines are highlighted in green. Statistical significance: Pearson correlation coefficient.
- (G) Annexin-V apoptosis assay 24 h after transfection with ASOs targeting *CHILL1* (left) and *GCAWKR* (right).
- (H) As for (C), for *GCAWKR*.
- (I) As for (D), comparing knockdown of *GCAWKR* with the same ASO in A549 and H460 cells ($p = 2.2 \times 10^{-16}$; $R = 0.8$; statistical significance: Pearson correlation coefficient).
- (J) MSigDB term enrichment significance for differentially expressed genes in common between A549 and H460 cells. The most significant terms are shown. y axis: adjusted p value (q value).
- (K) Cell-cycle assay results after 24 h upon knockdown of *CHILL1* and *GCAWKR* in A549. ($n = 2$ biological replicates, error bars: SD statistical significance: two-tailed Student's *t* test).
- (L) Cell migration across transwell supports in A549 cells. The crystal violet quantification is normalized to non-targeting ASO ($n = 4$ biological replicates, error bars: SD; statistical significance: one-tailed Student's *t* test).

experiments using distinct ASO sequences and in different cell backgrounds strongly suggested that observed phenotypic and molecular effects occur on target (via the intended lncRNA).⁹⁰ Second, ASOs were effective in both monolayer and 3D KRAS⁺ NSCLC backgrounds, in addition to several EGFR-mutant cell lines, raising hope for a more general utility. Future efforts will be required to further refine ASO sequences and chemistry and to effectively deliver them *in vivo*. Third, those phenotypic effects were diminished in non-transformed cells, pointing to reduced non-specific toxicity *in vivo*. This raises hopes for reduced toxicity in healthy cells, allowing not only higher doses but also combination therapies to suppress therapy resistance.⁹¹ Finally, *CHILL1* or *GCAWKR* are detected in the majority of KRAS⁺ NSCLC tumors, suggesting that the majority of patients might benefit from eventual treatment.

Mechanistically, the concordance of CRISPR and ASO phenotypes indicates that both genes act via an RNA transcript or at least the production thereof.^{58,92} Both have profound effects on the cellular transcriptome, affecting hundreds of target genes that converge on many shared, oncogenic pathways, which yielded experimentally verifiable predictions. Interestingly, however, these effects are mediated by very different immediate molecular mechanisms, as evidenced by their distinct subcellular localization, non-overlapping target genes, and the fact that mixing their ASOs yielded greater than additive effects.

We have shown how ASO cocktails boosted efficacy without increasing toxicity compared with equal doses of single ASOs. Our findings open the possibility of using either fixed cocktails or cocktails tailored specifically to a patient's tumor transcriptome, for potent, enduring, low-toxicity, and personalized cancer treatment.

Limitations of the study

One important caveat of CRISPR-del, in common with CRISPRi, is the risk of false-positive hits arising from unintentional targeting of overlapping *cis*- or *trans*-acting elements, such as DNA regulatory regions or opposite-strand lncRNA genes. Fortunately, these cases can be resolved by ASO validation, which can assign correct-strand RNA-mediated mechanisms for observed phenotypes. Our careful ASO validation indicated that while the majority of screen hits arise via the intended lncRNA-dependent mechanism, there were instances of likely false positives, i.e., candidates 408/316 (Figure 5A). A similar strategy could also narrow down *LINC00115* as the functional lncRNA in the bidirectional locus candidate 205 (Figure 3A). Overall, we could validate 8/12 (67%) lncRNA hits using ASOs (9 for proliferation/cisplatin, 3 for migration), suggesting that around one-third of screen hits may act via DNA-dependent mechanisms.

Nonetheless, several issues remain to be addressed in the future. This study identified known and new lncRNAs promoting NSCLC but is clearly not comprehensive in terms of excluding that other lncRNAs play important disease roles. Despite targeting an extensive catalog comprising 831 lncRNAs detected at a permissive expression cutoff in A549 cells, it is likely that we overlooked many valuable targets due to the relative inefficiency of CRISPR-del as a perturbation compared with ORF mutation⁴⁷ and also due to ongoing annotation incompleteness, resulting in

lncRNAs that were either not screened or whose TSS was incorrectly targeted.⁷⁰ For example, we could correctly identify some lncRNAs known to be involved in lung cancer pathogenesis¹⁶ like *PVT1*, *LINC00680*, and *PCAT7* (Figure 2H) but, surprisingly, not *MALAT1* or *MIAT*.¹⁶ The reason for the latter false negatives is unclear, although it may reflect their unusually high expression and/or else the presence of alternative TSSs that compensate for the loss of the targeted promoter. This may be overcome in the future by employing complementary direct RNA-targeting CRISPR perturbations, such as Cas13.^{93,94} We screened in two monolayer cell backgrounds; however, future screens should be performed in parallel across the widest panel of mutationally matched 2D and 3D models.⁷³ Finally, our screens discovered scores of lncRNAs that could not be followed up here and hopefully will provide a fertile source of new targets in the future.

STAR★METHODS

Detailed methods are provided in the online version of this paper and include the following:

- KEY RESOURCES TABLE
- RESOURCE AVAILABILITY
 - Lead contact
 - Materials availability
 - Data and code availability
- EXPERIMENTAL MODEL AND SUBJECT DETAILS
- METHOD DETAILS
 - Lentivirus and stable cell line production
 - DECKO and lentiviral production
 - Library design
 - Library cloning
 - Lentiviral titer calculation and infection
 - CRISPR screens
 - Genomic DNA preparation and sequencing
 - Screen hit identification and prioritization
 - Public RNA-sequencing data
 - PCR amplification from genomic DNA
 - Competition assay
 - Patient-derived xenograft organoids
 - Antisense oligonucleotides
 - 2D cell viability assay
 - 3D cell viability assay
 - Rescue experiments
 - Apoptosis assay
 - Cell cycle assay
 - Low-throughput migration assay
 - RNA isolation and RT-qPCR
 - RNA-sequencing and analysis
 - FISH and cell fractionation
 - ezTracks visualization of RNA elements
 - Copy number status of pan-hallmark candidates
- QUANTIFICATION AND STATISTICAL ANALYSIS

SUPPLEMENTAL INFORMATION

Supplemental information can be found online at <https://doi.org/10.1016/j.xgen.2022.100171>.

ACKNOWLEDGMENTS

We thank members of the GOLD Lab, including Joana Carlevaro-Fita, Núria Bosch-Guiteras, Michela Coan, Antonio Tarruell, and Tina Uroda, for insightful discussions. We also thank Roderic Guigó (CRG Barcelona, Spain) for insightful discussions. Thomas Marti and Renwang Peng (Department of BioMedical Research, DBMR, Bern, Switzerland) generously donated cell lines and advice on functional assays. We thank Basak Ginsbourger (DMBR) for administrative support and Willy Hofstetter and Patrick (DMBR) for logistical support. All computations were performed on the Bern Interfaculty Bioinformatics Unit computing cluster maintained by Rémy Bruggmann and Pierre Berthier. This work was funded by the Swiss National Science Foundation through the National Centre of Competence in Research (NCCR) "RNA & Disease" (51NF40-182880), project funding "The elements of long noncoding RNA function" (31003A_182337), Sinergia project "Regenerative strategies for heart disease via targeting the long noncoding transcriptome" (173738); by the Medical Faculty of the University and University Hospital of Bern; by the Helmut Horten Stiftung, Swiss Cancer Research Foundation (4534-08-2018); and by Science Foundation Ireland through Future Research Leaders award 18/FRL/6194.

AUTHOR CONTRIBUTIONS

T.P., R.E., and R.J. conceived and designed the experiment procedure and performed data analysis and interpretation. D.F.M. developed the TPP pipeline and performed most of the bioinformatics analysis. C.P.-Q. designed the lib-DECKO-NSCLC1 with the help of S.H. P.C. analyzed the RNA-seq data. S.F. and M.R. established the patient-derived organoids. P.S., A.K., G.B., and J.S. generated the stably expressing Cas9 cell line lines and helped with the validation. E.S.R., I.M., and P.C.M. validated the results in additional cell lines. D.H. performed the analysis on the FISH images. L.Z. and X.W. performed the survival analysis from TCGA data. A.V. provided the set of known cancer genes in NSCLC. A.A., H.A.G.-R., P.P.M., and A.L. contributed to the bioinformatics analysis. I.C. prepared the libraries for the NGS. S.H., C.R., and A.F.O. provided key inputs and tools. T.P., R.E., and R.J. wrote the manuscript with input from all the authors.

DECLARATION OF INTERESTS

T.P., R.E., and R.J. have filed a patent application (21202363.4) relating to the therapeutic targeting of lncRNAs identified here. Applicant: University of Bern. R.J. is a paid consultant for NextRNA (USA).

Received: October 6, 2021

Revised: June 15, 2022

Accepted: August 1, 2022

Published: August 22, 2022

REFERENCES

- Bray, F., Ferlay, J., Soerjomataram, I., Siegel, R.L., Torre, L.A., and Jemal, A. (2018). Global cancer statistics 2018: GLOBOCAN estimates of incidence and mortality worldwide for 36 cancers in 185 countries. *CA Cancer J. Clin.* *68*, 394–424.
- Gridelli, C., Rossi, A., Carbone, D.P., Guarize, J., Karachaliou, N., Mok, T., Petrella, F., Spaggiari, L., and Rosell, R. (2015). Non-small-cell lung cancer. *Nat. Rev. Dis. Prim.* *11*, 1–16.
- Salgia, R., Pharaon, R., Mambetsariev, I., Nam, A., and Sattler, M. (2021). The improbable targeted therapy: KRAS as an emerging target in non-small cell lung cancer (NSCLC). *Cell Rep. Med.* *2*, 100186.
- Rotow, J., and Bivona, T.G. (2017). Understanding and targeting resistance mechanisms in NSCLC. *Nat. Rev. Cancer* *17*, 637–658.
- Hong, D.S., Fakhri, M.G., Strickler, J.H., Desai, J., Durm, G.A., Shapiro, G.I., Falchook, G.S., Price, T.J., Sacher, A., Denlinger, C.S., et al. (2020). KRASG12C inhibition with Sotorasib in Advanced solid tumors. *N. Engl. J. Med.* *383*, 1207–1217. <https://doi.org/10.1056/NEJMoa1917239>.
- Canon, J., Rex, K., Saiki, A.Y., Mohr, C., Cooke, K., Bagal, D., Gaida, K., Holt, T., Knutson, C.G., Koppada, N., et al. (2019). The clinical KRAS(G12C) inhibitor AMG 510 drives anti-tumour immunity. *Nature* *575*, 217–223.
- Uszczyńska-Ratajczak, B., Lagarde, J., Frankish, A., Guigó, R., and Johnson, R. (2018). Towards a complete map of the human long non-coding RNA transcriptome. *Nat. Rev. Genet.* *19*, 535–548.
- Ma, L., Cao, J., Liu, L., Du, Q., Li, Z., Zou, D., Bajic, V.B., and Zhang, Z. (2019). LncBook: a curated knowledgebase of human long non-coding RNAs. *Nucleic Acids Res.* *47*, 2699–D134.
- Volders, P.J., Anckaert, J., Verheggen, K., Nuytens, J., Martens, L., Mestdagh, P., and Vandesompele, J. (2019). Lncpedia 5: towards a reference set of human long non-coding rnas. *Nucleic Acids Res.* *47*, D135–D139.
- Hon, C.-C., Ramiłowski, J.A., Harshbarger, J., Bertin, N., Rackham, O.J.L., Gough, J., Denisenko, E., Schmeier, S., Poulsen, T.M., Severin, J., et al. (2017). An atlas of human long non-coding RNAs with accurate 5' ends. *Nature* *543*, 199–204.
- Hanahan, D., and Weinberg, R.A. (2011). Hallmarks of cancer: the next generation. *Cell* *144*, 646–674.
- Hanahan, D., Weinberg, R.A., Ouzounis, C.A.C., López-Bigas, N., Hanahan, D., Weinberg, R.A.R., Vogelstein, B., Kinzler, K., Friedberg, E., Brentani, H., et al. (2000). The hallmarks of cancer. *Cell* *100*, 57–70.
- Statello, L., Guo, C.J., Chen, L.L., and Huarte, M. (2021). Gene Regulation by Long Non-coding RNAs and its Biological Functions.
- Montes, M., Lubas, M., Arendrup, F.S., Mentz, B., Rohatgi, N., Tumas, S., Harder, L.M., Skanderup, A.J., Andersen, J.S., and Lund, A.H. (2021). The long non-coding RNA MIR31HG regulates the senescence associated secretory phenotype. *Nat. Commun.* *12*, 2459.
- Lee, B., Sahoo, A., Marchica, J., Holzhauser, E., Chen, X., Li, J.L., Seki, T., Govindarajan, S.S., Markey, F.B., Batish, M., et al. (2017). The long noncoding RNA SPRIGHTLY acts as an intranuclear organizing hub for pre-mRNA molecules. *Sci. Adv.* *3*, e1602505.
- Vancura, A., Lanzós, A., Bosch-Guiteras, N., Esteban, M.T., Gutierrez, A.H., Haefliger, S., Johnson, R., Vancura, A., Lanzós, A., Bosch-Guiteras, N., et al. (2021). Cancer LncRNA Census 2 (CLC2): an enhanced resource reveals clinical features of cancer lncRNAs. *NAR Cancer* *3*, zcab013.
- Liu, S.J., Malatesta, M., Lien, B.V., Saha, P., Thombare, S.S., Hong, S.J., Pedraza, L., Koontz, M., Seo, K., Horlbeck, M.A., et al. (2020). CRISPRi-based radiation modifier screen identifies long non-coding RNA therapeutic targets in glioma. *Genome Biol.* *21*, 83.
- Lucci, E., Vendramin, R., Spinazzi, M., Laurette, P., Fiers, M., Wouters, J., Radaelli, E., Eyckerman, S., Leonelli, C., Vanderheyden, K., et al. (2016). Melanoma addiction to the long non-coding RNA SAMMSON. *Nature* *531*, 518–522.
- Gutschner, T., Hämmerle, M., Eissmann, M., Hsu, J., Kim, Y., Hung, G., Revenko, A., Arun, G., Stentrup, M., Gross, M., et al. (2013). The noncoding RNA MALAT1 is a critical regulator of the metastasis phenotype of lung cancer cells. *Cancer Res.* *73*, 1180–1189.
- Tseng, Y.Y., Moriarity, B.S., Gong, W., Akiyama, R., Tiwari, A., Kawakami, H., Ronning, P., Reuland, B., Guenther, K., Beadnell, T.C., et al. (2014). PVT1 dependence in cancer with MYC copy-number increase. *Nature* *512*, 82–86.
- Wang, H., Feng, L., Zheng, Y., Li, W., Liu, L., Xie, S., Zhou, Y., Chen, C., and Cheng, D. (2020). Linc00680 promotes the progression of non-small cell lung cancer and functions as a sponge of mir-410-3p to enhance hmgb1 expression. *OncoTargets Ther.* *13*, 8183–8196.
- Sun, X., Wang, R., Tan, M., Tian, X., and Meng, J. (2021). LncRNA LINC00680 promotes lung adenocarcinoma growth via binding to GATA6 and canceling GATA6-mediated suppression of SOX12 expression. *Exp. Cell Res.* *405*, 112653.
- Sun, C.C., Li, S.J., Li, G., Hua, R.X., Zhou, X.H., and Li, D.J. (2016). Long intergenic noncoding RNA 00511 acts as an oncogene in non-small-cell

- lung cancer by binding to EZH2 and suppressing p57. *Mol. Ther. Nucleic Acids* 5, e385.
24. Esposito, R., Bosch, N., Lanzós, A., Polidori, T., Pulido-Quetglas, C., and Johnson, R. (2019). Hacking the cancer genome: profiling therapeutically-actionable long noncoding RNAs using CRISPR-Cas9 screening. *Cancer Cell* 35, 545–557.
 25. Liu, S.J., Horlbeck, M.A., Cho, S.W., Birk, H.S., Malatesta, M., He, D., Attenello, F.J., Villalta, J.E., Cho, M.Y., Chen, Y., et al. (2017). CRISPRi-based genome-scale identification of functional long non-coding RNA loci in human cells. *Science* 355, aah7111.
 26. Joung, J., Konermann, S., Gootenberg, J.S., Abudayyeh, O.O., Platt, R.J., Brigham, M.D., Sanjana, N.E., and Zhang, F. (2017). Genome-scale CRISPR-Cas9 knockout and transcriptional activation screening. *Nat. Protoc.* 12, 828–863.
 27. Bester, A.C., Lee, J.D., Chavez, A., Lee, Y.R., Nachmani, D., Vora, S., Victor, J., Sauvageau, M., Monteleone, E., Rinn, J.L., et al. (2018). An integrated genome-wide CRISPRa approach to functionalize lncRNAs in drug resistance. *Cell* 173, 649–664.e20.
 28. Hay, M., Thomas, D.W., Craighead, J.L., Economides, C., and Rosenthal, J. (2014). Clinical development success rates for investigational drugs. *Nat. Biotechnol.* 32, 40–51.
 29. MacLeod, A.R., and Crooke, S.T. (2017). RNA therapeutics in oncology: advances, challenges, and future directions. *J. Clin. Pharmacol.* 57, S43–S59.
 30. Aparicio-Prat, E., Arnan, C., Sala, I., Bosch, N., Guigó, R., Johnson, R., Guigó, R., and Johnson, R. (2015). DECKO: single-oligo, dual-CRISPR deletion of genomic elements including long non-coding RNAs. *BMC Genom.* 16, 846.
 31. Furlan, G., Gutierrez Hernandez, N., Huret, C., Galupa, R., van Bommel, J.G., Romito, A., Heard, E., Morey, C., and Rougeulle, C. (2018). The Ftx noncoding locus controls X chromosome inactivation independently of its RNA products. *Mol. Cell* 70, 462–472.e8.
 32. George, M.R., Duan, Q., Nagle, A., Kathiriya, I.S., Huang, Y., Rao, K., Halder, S.M., and Bruneau, B.G. (2019). Minimal in vivo requirements for developmentally regulated cardiac long intergenic non-coding RNAs. *Development* 146, dev185314.
 33. Perry, R.B.T., Hezroni, H., Goldrich, M.J., and Ulitsky, I. (2018). Regulation of Neuroregeneration by long noncoding RNAs. *Mol. Cell* 72, 553–567.e5.
 34. Lee, H.J., Gopalappa, R., Sunwoo, H., Choi, S.W., Ramakrishna, S., Lee, J.T., Kim, H.H., and Nam, J.W. (2019). En bloc and segmental deletions of human XIST reveal X chromosome inactivation-involving RNA elements. *Nucleic Acids Res.* 47, 3875–3887.
 35. Canver, M.C., Bauer, D.E., Dass, A., Yien, Y.Y., Chung, J., Masuda, T., Maeda, T., Paw, B.H., and Orkin, S.H. (2014). Characterization of genomic deletion efficiency mediated by clustered regularly interspaced short palindromic repeats (CRISPR)/Cas9 nuclease system in mammalian cells. *J. Biol. Chem.* 289, 21312–21324.
 36. Goyal, A., Myacheva, K., Groß, M., Klingenberg, M., Duran Arqué, B., Diederichs, S., Groß, M., Klingenberg, M., Duran Arqué, B., and Diederichs, S. (2017). Challenges of CRISPR/Cas9 applications for long non-coding RNA genes. *Nucleic Acids Res.* 45, e12.
 37. You, B.-H., Yoon, S.-H., and Nam, J.-W. (2017). High-confidence coding and noncoding transcriptome maps. *Genome Res.* 27, 1050–1062.
 38. Frankish, A., Diekhans, M., Ferreira, A.M., Johnson, R., Jungreis, I., Loveland, J., Mudge, J.M., Sisu, C., Wright, J., Armstrong, J., et al. (2019). GENCODE reference annotation for the human and mouse genomes. *Nucleic Acids Res.* 47, D766–D773.
 39. Davis, C.A., Hitz, B.C., Sloan, C.A., Chan, E.T., Davidson, J.M., Gabdank, I., Hilton, J.A., Jain, K., Baymuradov, U.K., Narayanan, A.K., et al. (2018). The Encyclopedia of DNA elements (ENCODE): data portal update. *Nucleic Acids Res.* 46, D794–D801.
 40. ENCODE Project Consortium; Kundaje, A., Aldred, S.F., Collins, P.J., Davis, C.A., Doyle, F., Epstein, C.B., Frietze, S., Harrow, J., Kaul, R., et al. (2012). An integrated encyclopedia of DNA elements in the human genome. *Nature* 489, 57–74.
 41. Imkeller, K., Ambrosi, G., Boutros, M., and Huber, W. (2019). Modelling asymmetric count ratios in CRISPR screens to decrease experiment size and improve phenotype detection. Preprint at bioRxiv. <https://doi.org/10.1101/699348>.
 42. Brower, M., Carney, D.N., Oie, H.K., Gazdar, A.F., and Minna, J.D. (1986). Growth of cell lines and clinical specimens of human non-small cell lung cancer in a Serum-free defined medium. *Cancer Res.* 46, 798–806.
 43. Giard, D.J., Aaronson, S.A., Todaro, G.J., Arnstein, P., Kersey, J.H., Dosik, H., and Parks, W.P. (1973). In vitro cultivation of human tumors: establishment of cell lines derived from a series of solid tumors. *J. Natl. Cancer Inst.* 51, 1417–1423.
 44. Stojic, L., Lun, A.T.L., Mangei, J., Mascalchi, P., Quarantotti, V., Barr, A.R., Bakal, C., Marioni, J.C., Gergely, F., and Odom, D.T. (2018). Specificity of RNAi, LNA and CRISPRi as loss-of-function methods in transcriptional analysis. *Nucleic Acids Res.* 46, 5950–5966.
 45. Horlbeck, M.A., Liu, S.J., Chang, H.Y., Lim, D.A., and Weissman, J.S. (2020). Fitness effects of CRISPR/Cas9-targeting of long noncoding RNA genes. *Nat. Biotechnol.* 38, 573–576.
 46. Ota, T., Suzuki, Y., Nishikawa, T., Otsuki, T., Sugiyama, T., Irie, R., Wakamatsu, A., Hayashi, K., Sato, H., Nagai, K., et al. (2004). Complete sequencing and characterization of 21, 243 full-length human cDNAs. *Nat. Genet.* 36, 40–45.
 47. Lavalou, P., Eckert, H., Damy, L., Constanty, F., Majello, S., Bitetti, A., Graindorge, A., and Shkumatava, A. (2019). Strategies for genetic inactivation of long noncoding RNAs in Zebrafish. *RNA*. [ma.069484.118](https://doi.org/10.12653/02707540.118).
 48. Konermann, S., Brigham, M.D., Trevino, A.E., Joung, J., Abudayyeh, O.O., Barceña, C., Hsu, P.D., Habib, N., Gootenberg, J.S., Nishimasu, H., et al. (2015). Genome-scale transcriptional activation by an engineered CRISPR-Cas9 complex. *Nature* 517, 583–588.
 49. Zhu, S., Li, W., Liu, J., Chen, C.H., Liao, Q., Xu, P., Xu, H., Xiao, T., Cao, Z., Peng, J., et al. (2016). Genome-scale deletion screening of human long non-coding RNAs using a paired-guide RNA CRISPR-Cas9 library. *Nat. Biotechnol.* 34, 1279–1286.
 50. Beermann, J., Kirste, D., Iwanov, K., Lu, D., Kleemiß, F., Kumarswamy, R., Schimmel, K., Bär, C., Thum, T., Kleemiss, F., et al. (2018). A large shRNA library approach identifies lncRNA Nteps as an essential regulator of cell proliferation. *Cell Death Differ.* 25, 307–318.
 51. Lv, J., Qiu, M., Xia, W., Liu, C., Xu, Y., Wang, J., Leng, X., Huang, S., Zhu, R., Zhao, M., et al. (2016). High expression of long non-coding RNA SBF2-AS1 promotes proliferation in non-small cell lung cancer. *J. Exp. Clin. Cancer Res.* 35, 75.
 52. Liu, Y., Cao, Z., Wang, Y., Guo, Y., Xu, P., Yuan, P., Liu, Z., He, Y., and Wei, W. (2018). Genome-wide screening for functional long noncoding RNAs in human cells by Cas9 targeting of splice sites. *Nat. Biotechnol.* 36, 1203–1210.
 53. Hanna, N., Johnson, D., Temin, S., Baker, S., Brahmer, J., Ellis, P.M., Giaccone, G., Hesketh, P.J., Jayesimi, I., Leigh, N.B., et al. (2017). Systemic therapy for stage IV non-small-cell lung cancer: American Society of clinical oncology clinical practice guideline update. *J. Clin. Oncol.* 35, 3484–3515.
 54. Shao, L., Yu, Q., Lu, X., Zhang, X., and Zhuang, Z. (2021). Downregulation of LINC00115 inhibits the proliferation and invasion of lung cancer cells in vitro and in vivo. *Ann. Transl. Med.* 9, 1256.
 55. Wang, P., Chen, D., Ma, H., and Li, Y. (2017). lncRNA SNHG12 contributes to multidrug resistance through activating the MAPK/Slug pathway by sponging miR-181a in non-small cell lung cancer. *Oncotarget* 8, 84086–84101.

56. Lai, F., Damle, S.S., Ling, K.K., and Rigo, F. (2020). Directed RNase H cleavage of Nascent transcripts causes transcription termination. *Mol. Cell* 77, 1032–1043.e4.
57. Wu, B., Xue, X., Lin, S., Tan, X., and Shen, G. (2022). LncRNA LINC00115 facilitates lung cancer progression through miR-607/ITGB1 pathway. *Environ. Toxicol.* 37, 7–16.
58. Yuan, C., Luo, X., Duan, S., and Guo, L. (2020). Long noncoding RNA LINC00115 promotes breast cancer metastasis by inhibiting miR-7. *FEBS Open Bio.* 10, 1230–1237.
59. Peng, N., Zhang, Z., Wang, Y., Yang, M., Fan, J., Wang, Q., Deng, L., Chen, D., Cai, Y., Li, Q., et al. (2021). Down-regulated LINC00115 inhibits prostate cancer cell proliferation and invasion via targeting miR-212-5p/FZD5/Wnt/ β -catenin axis. *J. Cell Mol. Med.* 25, 10627–10637.
60. Feng, W., Li, B., Wang, J., Zhang, H., Liu, Y., Xu, D., Cheng, K., and Zhuang, J. (2020). Long non-coding RNA LINC00115 contributes to the progression of colorectal cancer by targeting miR-489-3p via the PI3K/AKT/mTOR pathway. *Front. Genet.* 11, 567630.
61. Seo, J.S., Ju, Y.S., Lee, W.C., Shin, J.Y., Lee, J.K., Bleazard, T., Lee, J., Jung, Y.J., Kim, J.O., Shin, J.Y., et al. (2012). The transcriptional landscape and mutational profile of lung adenocarcinoma. *Genome Res.* 22, 2109–2119.
62. Marín-Béjar, O., Mas, A.M., González, J., Martínez, D., Athie, A., Morales, X., Galduroz, M., Raimondi, I., Grossi, E., Guo, S., et al. (2017). The human lncRNA LINC-PINT inhibits tumor cell invasion through a highly conserved sequence element. *Genome Biol.* 18, 202.
63. Huarte, M. (2015). The Emerging Role of lncRNAs in Cancer (Nature Publishing Group).
64. Blokhin, I., Khorkova, O., Hsiao, J., and Wahlestedt, C. (2018). Developments in lncRNA drug discovery: where are we heading? *Expert Opin. Drug Discov.* 13, 837–849.
65. Dhuri, K., Bechtold, C., Quijano, E., Pham, H., Gupta, A., Vikram, A., and Bahal, R. (2020). Antisense oligonucleotides: an emerging area in drug discovery and development. *J. Clin. Med.* 9, 2004.
66. Kaczmarek, J.C., Kowalski, P.S., and Anderson, D.G. (2017). Advances in the delivery of RNA therapeutics: from concept to clinical reality. *Genome Med.* 9, 60.
67. Matsui, M., and Corey, D.R. (2017). Non-coding RNAs as drug targets. *Nat. Rev. Drug Discov.* 16, 167–179.
68. Ma, M., Zhang, Y., Weng, M., Hu, Y., Xuan, Y., Hu, Y., and Lv, K. (2018). lncRNA GCAWKR promotes gastric cancer development by scaffolding the chromatin modification factors WDR5 and KAT2A. *Mol. Ther.* 26, 2658–2668.
69. Wang, Y., Guo, S., Li, D., Tang, Y., Li, L., Su, L., and Liu, X. (2020). YIPF2 promotes chemotherapeutic agent-mediated apoptosis via enhancing TNFRSF10B recycling to plasma membrane in non-small cell lung cancer cells. *Cell Death Dis.* 11, 242.
70. Lagarde, J., Uszczyńska-Ratajczak, B., Carbonell, S., Pérez-Lluch, S., Abad, A., Davis, C., Gíngeras, T.R., Frankish, A., Harrow, J., Guigo, R., and Johnson, R. (2017). High-throughput annotation of full-length long noncoding RNAs with Capture Long-Read Sequencing. *Nat. Genet.* 49, 1731–1740.
71. Ramilowski, J.A., Yip, C.W., Agrawal, S., Chang, J.-C., Ciani, Y., Kulakovskiy, I.V., Mendez, M., Ooi, J.L.C., Petri, A., Roos, L., et al. (2019). Functional annotation of human long non-coding RNAs via molecular phenotyping. Preprint at bioRxiv. <https://doi.org/10.1101/gr.254219.119>.
72. Unger, C., Kramer, N., Walzl, A., Scherzer, M., Hengstschläger, M., and Dolznig, H. (2014). Modeling human carcinomas: physiologically relevant 3D models to improve anti-cancer drug development. *Adv. Drug Deliv. Rev.* 79–80, 50–67.
73. Han, K., Pierce, S.E., Li, A., Spees, K., Anderson, G.R., Seoane, J.A., Lo, Y.H., Dubreuil, M., Olivás, M., Kamber, R.A., et al. (2020). CRISPR screens in cancer spheroids identify 3D growth-specific vulnerabilities. *Nature* 580, 136–141.
74. Sachs, N., de Ligt, J., Kopper, O., Gogola, E., Bounova, G., Weeber, F., Balgobind, A.V., Wind, K., Gracanin, A., Begthel, H., et al. (2018). A living biobank of breast cancer organoids captures disease heterogeneity. *Cell* 172, 373–386.e10.
75. Carlevaro-Fita, J., Polidori, T., Das, M., Navarro, C., Zoller, T.I., and Johnson, R. (2019). Ancient exapted transposable elements promote nuclear enrichment of human long noncoding RNAs. *Genome Res.* 29, 208–222.
76. Guillen-Ramirez, H.A., and Johnson, R. (2021). ezTracks v0.1.0.
77. Kellis, M., Wold, B., Snyder, M.P., Bernstein, B.E., Kundaje, A., Marinov, G.K., Ward, L.D., Birney, E., Crawford, G.E., Dekker, J., et al. (2014). Defining functional DNA elements in the human genome. *Proc. Natl. Acad. Sci. USA* 111, 6131–6138.
78. Kanehisa, M., Furumichi, M., Tanabe, M., Sato, Y., and Morishima, K. (2017). KEGG: new perspectives on genomes, pathways, diseases and drugs. *Nucleic Acids Res.* 45, D353–D361.
79. Subramanian, A., Tamayo, P., Mootha, V.K., Mukherjee, S., Ebert, B.L., Gillette, M.A., Paulovich, A., Pomeroy, S.L., Golub, T.R., Lander, E.S., and Mesirov, J.P. (2005). Gene set enrichment analysis: a knowledge-based approach for interpreting genome-wide expression profiles. *Proc. Natl. Acad. Sci. USA* 102, 15545–15550.
80. Apostolopoulou, K., Pateras, I.S., Evangelou, K., Tsantoulis, P.K., Liontos, M., Kittas, C., Tiniakos, D.G., Kotsinas, A., Cordon-Cardo, C., and Gorgoulis, V.G. (2007). Gene amplification is a relatively frequent event leading to ZBTB7A (Pokemon) overexpression in non-small cell lung cancer. *J. Pathol.* 213, 294–302.
81. Zhijun, Z., and Jinggang, H. (2017). MicroRNA-520e suppresses non-small-cell lung cancer cell growth by targeting Zbtb7a-mediated Wnt signaling pathway. *Biochem. Biophys. Res. Commun.* 486, 49–56.
82. Berkers, C.R., Maddocks, O.D.K., Cheung, E.C., Mor, I., and Vousden, K.H. (2013). Metabolic regulation by p53 family members. *Cell Metab.* 18, 617–633.
83. Maeda, T., Hobbs, R.M., Merghoub, T., Guenah, I., Zelent, A., Cordon-Cardo, C., Teruya-Feldstein, J., and Pandolfi, P.P. (2005). Role of the proto-oncogene Pokemon in cellular transformation and ARF repression. *Nature* 433, 278–285.
84. Zhang, Y.Q., Xiao, C.X., Lin, B.Y., Shi, Y., Liu, Y.P., Liu, J.J., Guleng, B., and Ren, J.L. (2013). Silencing of pokemon enhances caspase-dependent apoptosis via fas- and mitochondria-mediated pathways in hepatocellular carcinoma cells. *PLoS One* 8, e68981.
85. Constantinou, C., Spella, M., Chondrou, V., Patrinos, G.P., Papachatzopoulou, A., and Sgourou, A. (2019). The multi-faceted functioning portrait of LRF/ZBTB7A. *Hum. Genomics* 13, 66.
86. Doench, J.G. (2018). Am I ready for CRISPR? A user's guide to genetic screens. *Nat. Rev. Genet.* 19, 67–80.
87. Agrotis, A., and Ketteler, R. (2015). A new age in functional genomics using CRISPR/Cas9 in arrayed library screening. *Front. Genet.* 6, 300.
88. Hosono, Y., Niknafs, Y.S., Prensner, J.R., Iyer, M.K., Dhanasekaran, S.M., Mehra, R., Pitchiaya, S., Tien, J., Escara-Wilke, J., Poliakov, A., et al. (2017). Oncogenic role of THOR, a conserved cancer/Testis non-coding RNA. *Cell* 171, 1559–1572.e20.
89. Joung, J., Engreitz, J.M., Konermann, S., Abudayyeh, O.O., Verdine, V.K., Aguet, F., Gootenberg, J.S., Sanjana, N.E., Wright, J.B., Fulco, C.P., et al. (2017). Genome-scale activation screen identifies a lncRNA locus regulating a gene neighbourhood. *Nature* 548, 343–346.
90. Gagnon, K.T., and Corey, D.R. (2019). Guidelines for experiments using antisense oligonucleotides and double-stranded RNAs. *Nucleic Acid Ther.* 29, 116–122.
91. Bayat Mokhtari, R., Homayouni, T.S., Baluch, N., Morgatskaya, E., Kumar, S., Das, B., and Yeager, H. (2017). Combination therapy in combating cancer. *Oncotarget* 8, 38022–38043.

92. Pulido-Quetglas, C., Aparicio-Prat, E., Arnan, C., Polidori, T., Hermoso, T., Palumbo, E., Ponomarenko, J., Guigo, R., and Johnson, R. (2017). Scalable design of paired CRISPR guide RNAs for genomic deletion. *PLoS Comput. Biol.* *13*, e1005341.
93. Konermann, S., Loffy, P., Brideau, N.J., Oki, J., Shokhirev, M.N., and Hsu, P.D. (2018). Transcriptome engineering with RNA-targeting type VI-D CRISPR Effectors. *Cell* *173*, 665–676.e14.
94. Abudayyeh, O.O., Gootenberg, J.S., Essletzbichler, P., Han, S., Joung, J., Belanto, J.J., Verdine, V., Cox, D.B.T., Kellner, M.J., Regev, A., et al. (2017). RNA targeting with CRISPR-Cas13. *Nature* *550*, 280–284.
95. Li, B., and Dewey, C.N. (2011). RSEM: accurate transcript quantification from RNA-Seq data with or without a reference genome. *BMC Bioinf.* *12*, 323.
96. Ernst, J., and Kellis, M. (2010). Discovery and characterization of chromatin states for systematic annotation of the human genome. *Nat. Biotechnol.* *28*, 817–825.
97. Li, W., Xu, H., Xiao, T., Cong, L., Love, M.I., Zhang, F., Irizarry, R.A., Liu, J.S., Brown, M., and Liu, X.S. (2014). MAGeCK enables robust identification of essential genes from genome-scale CRISPR/Cas9 knockout screens. *Genome Biol.* *15*, 554.
98. Wang, B., Krall, E.B., Aguirre, A.J., Kim, M., Widlund, H.R., Doshi, M.B., Sicinska, E., Sulahian, R., Goodale, A., Cowley, G.S., et al. (2017). ATXN1L, CIC, and ETS transcription factors Modulate sensitivity to MAPK pathway inhibition. *Cell Rep.* *18*, 1543–1557.
99. Bergadà-Pijuan, J., Pulido-Quetglas, C., Vancura, A., and Johnson, R. (2020). CASPR, an analysis pipeline for single and paired guide RNA CRISPR screens, reveals optimal target selection for long non-coding RNAs. *Bioinformatics* *36*, 1673–1680.
100. Perez, A.R., Pritykin, Y., Vidigal, J.A., Chhangawala, S., Zampari, L., Leslie, C.S., and Ventura, A. (2017). GuideScan software for improved single and paired CRISPR guide RNA design. *Nat. Biotechnol.* *35*, 347–349.
101. Wang, B., Wang, M., Zhang, W., Xiao, T., Chen, C.H., Wu, A., Wu, F., Traugh, N., Wang, X., Li, Z., et al. (2019). Integrative analysis of pooled CRISPR genetic screens using MAGeCKFlute. *Nat. Protoc.* *14*, 756–780.
102. Kolde, R., Laur, S., Adler, P., and Vilo, J. (2012). Robust rank aggregation for gene list integration and meta-analysis. *Bioinformatics* *28*, 573–580.
103. Poole, W., Gibbs, D.L., Shmulevich, I., Bernard, B., and Knijnenburg, T.A. (2016). Combining dependent P-values with an empirical adaptation of Brown's method. In *Bioinformatics* (Oxford University Press), pp. i430–i436.
104. Wilson, D.J. (2019). The harmonic mean p-value for combining dependent tests. *Proc. Natl. Acad. Sci. USA* *116*, 1195–1200.
105. Anders, S., Pyl, P.T., and Huber, W. (2015). HTSeq-A Python framework to work with high-throughput sequencing data. *Bioinformatics* *31*, 166–169.
106. Li, J., Han, L., Roebuck, P., Diao, L., Liu, L., Yuan, Y., Weinstein, J.N., and Liang, H. (2015). TANRIC: an interactive open platform to explore the function of lncRNAs in cancer. *Cancer Res.* *75*, 3728–3737.
107. Shultz, L.D., Lyons, B.L., Burzenski, L.M., Gott, B., Chen, X., Chaleff, S., Kotb, M., Gillies, S.D., King, M., Mangada, J., et al. (2005). Human lymphoid and myeloid cell development in NOD/LtSz-scid IL2R γ null mice engrafted with mobilized human hemopoietic stem cells. *J. Immunol.* *174*, 6477–6489.
108. ENCODE Project Consortium; Purcaro, M.J., Epstein, C.B., Adrian, J., Davis, C.A., Kaul, R., Van Nostrand, E.L., Gorkin, D.U., He, Y., Pauli-Behn, F., et al. (2020). Expanded encyclopaedias of DNA elements in the human and mouse genomes. *Nature* *583*, 699–710.
109. Jawaid, W. (2021). Provides an R Interface to “Enrichr” [R Package enrichR Version 3.0].
110. McQuin, C., Goodman, A., Chernyshev, V., Kamensky, L., Cimini, B.A., Karhohs, K.W., Doan, M., Ding, L., Rafelski, S.M., Thirstrup, D., et al. (2018). CellProfiler 3.0: next-generation image processing for biology. *PLoS Biol.* *16*, e2005970.
111. Seemann, S.E., Mirza, A.H., Hansen, C., Bang-Berthelsen, C.H., Garde, C., Christensen-Dalsgaard, M., Torarinsson, E., Yao, Z., Workman, C.T., Pociot, F., et al. (2017). The identification and functional annotation of RNA structures conserved in vertebrates. *Genome Res.* *27*, 1371–1383.
112. Kent, W.J., Sugnet, C.W., Furey, T.S., Roskin, K.M., Pringle, T.H., Zahler, A.M., and Haussler, D. (2002). The human genome browser at UCSC. *Genome Res.* *12*, 996–1006.
113. Siepel, A., Bejerano, G., Pedersen, J.S., Hinrichs, A.S., Hou, M., Rosenbloom, K., Clawson, H., Spieth, J., Hillier, L.W., Richards, S., et al. (2005). Evolutionarily conserved elements in vertebrate, insect, worm, and yeast genomes. *Genome Res.* *15*, 1034–1050.
114. Smit, A.F.A., and Hubely, R. (2008). RepeatMasker home page. RepeatModeler open-1.0. <http://www.repeatmasker.org/>.
115. Quinlan, A.R., and Hall, I.M. (2010). BEDTools: a flexible suite of utilities for comparing genomic features. *Bioinformatics* *26*, 841–842.
116. Bray, N.L., Pimentel, H., Melsted, P., and Pachter, L. (2016). Near-optimal probabilistic RNA-seq quantification. *Nat. Biotechnol.* *34*, 525–527.
117. Pimentel, H., Bray, N.L., Puente, S., Melsted, P., and Pachter, L. (2017). Differential analysis of RNA-seq incorporating quantification uncertainty. *Nat. Methods* *14*, 687–690.
118. Edgar, R., Domrachev, M., and Lash, A.E. (2002). Gene Expression Omnibus: NCBI gene expression and hybridization array data repository. *Nucleic Acids Res.* *30*, 207–210.

STAR★METHODS

KEY RESOURCES TABLE

REAGENT or RESOURCE	SOURCE	IDENTIFIER
Bacterial and virus strains		
LentiCas9-Blast	Addgene	Cat#52962
pDECKO_mCherry	Addgene	Cat#78534
Electrocompetent Endura™ cells	Lucigen	Cat#60242-2
Chemicals, peptides, and recombinant proteins		
Blasticidin	ThermoFisher	Cat#A1113903
Cytofix/Cytoperm Fixation	BD	Cat#51-2090KZ
DAPI	Roche	Cat#10236276001
Lipofectamine 2000	ThermoFisher	Cat#11668019
Ki-67 Antibody	ThermoFisher	Cat#12-5698-82)
Matrigel® Matrix GFR, LDEV-free	Corning	Cat#356231
PE Annexin	ThermoFisher	Cat#L34960
Perm/Wash	BD	Cat#51-2091KE
Puromycin	ThermoFisher	Cat#A1113803
Trypan Blue Solution (100mL)	Sigma-Aldrich	Cat#T8154
Viability dye	ThermoFisher	Cat#35111
Critical commercial assays		
Agencourt AMPure XP beads	Beckman Coulter	Cat#A63880
Blood & Cell Culture DNA Midi	Qiagen	Cat#13343
Blood & Cell Culture DNA Mini	Qiagen	Cat#13323
CellTrace™ CFSE Cell Proliferation Kit	ThermoFisher	Cat#C34570
CellTiter-Glo 2.0	Promega	Cat#G9242
CellTiter-Glo® 3D Cell Viability Assay	Promega	Cat#G9682
GoScript™ Reverse Transcriptase	Promega	Cat#A5003
GoTaq	Promega	Cat#M3001
GoTaq® qPCR Master Mix kit	Promega	Cat#A6002
QIAquick PCR Purification Kit	Qiagen	Cat#28104
Qubit™ dsDNA HS Assay Kit	ThermoFisher	Cat#Q32854
Quick-RNA™ kit from (#)	ZymoResearch	Cat#R1055
Z-Competent E.coli	ZymoResearch	Cat#T3001
Deposited data		
Pooled CRISPR screens in A549 and NCI-H460	This paper	GEO: GSE207228
RNA-Seq of A549 and NCI-H460 upon ASO treatment	This paper	GEO: GSE207227
Experimental models: Cell lines		
Human: A549 (male)	N/A	N/A
Human: CCD-16Lu (female)	N/A	N/A
Human: HEK293T (female)	N/A	N/A
Human: H441 (male)	N/A	N/A
Human: NCI-H460 (male)	N/A	N/A
Human: MRC-5 (male)	N/A	N/A
Experimental models: Organisms/strains		
NOD.Cg-Prkdcscidll2rgtm1Wjl/SzJ (NSG® mice)	Charles River Laboratories	N/A

(Continued on next page)

Continued

REAGENT or RESOURCE	SOURCE	IDENTIFIER
Oligonucleotides		
LibDECKO-NSCLC1 (see File S1 for sequences)	This paper	N/A
ASOs (see Table S1 for sequences)	Qiagen	N/A
NGS sequencing primers (see Table S2 for sequences)	Sigma-Aldrich	N/A
Primers for genomic deletion and Primers RT-qPCR (see File S5)	Sigma-Aldrich	N/A
Software and algorithms		
CRISPETa	⁹²	N/A
FlowJo 10	FlowJo	N/A
Graphpad Prism	https://www.graphpad.com/scientific-software/prism/	N/A
R Statistical Software	https://www.r-project.org/	N/A
Target Prioritisation Pipeline (TPP)	https://doi.org/10.5281/zenodo.6912510	N/A
Stellaris probe designer	www.biosearchtech.com	N/A
Other		
ChemiDoc Imaging System	BIO RAD	N/A
FACSAria™ III Cell Sorter	BD®	N/A
LSR II Flow Cytometer	BD®	N/A
Tecan Infinite® 200 Pro	N/A	N/A
Cell counter	Sigma-Aldrich	Cat#Z169021-1EA

RESOURCE AVAILABILITY

Lead contact

Further information and requests for resources and reagents should be directed to and will be fulfilled by the lead contact Dr. Rory Johnson, rory.johnson@ucd.ie.

Materials availability

Plasmids and cell lines generated in this study are available from the corresponding author R.J. upon request. This study did not generate new unique reagents.

Data and code availability

- The data discussed in this publication have been deposited in NCBI's Gene Expression Omnibus (GEO)¹¹⁸ and are publicly available as of the date of publication at GEO: GSE207229. Accession numbers are listed in the [key resources table](#).
- The code related to the target prioritisation pipeline (TPP) for multiple screens integration has been deposited at Zenodo: 6912511 and is publicly available as of the date of publication.
- Any additional information required to reanalyse the data reported in this paper is available from the [lead contact](#) upon request.

EXPERIMENTAL MODEL AND SUBJECT DETAILS

HEK293T (female), A549 (male), NCI-H460 (male), H441 (male), CCD-16Lu (female) cell lines were a kind gift by the groups of Adrian Ochsenbein and Renwang Peng (University Hospital of Bern, Switzerland). MRC-5 (male) cells were provided by the group of Ronald Dijkmanthe (Institute of Virology and Immunology, University of Bern, Switzerland). HBEC3-KT (female) bronchial epithelial human cells were purchased from the American Type Culture Collection (ATCC; <http://www.atcc.org>). All the cell lines were authenticated using Short Tandem Repeat (STR) profiling (Microsynth Cell Line Typing) and tested negative for mycoplasma contamination.

A549 and HEK293T cells were maintained in DMEM, MRC-5 in EMEM, NCI-H460, H441 as well as CCD-16Lu in RPMI-1640 medium, all supplemented with 10% Fetal Bovine Serum, 1% L-Glutamine, 1% Penicillin-Streptomycin. HBEC3-KT cells were maintained in Airway Epithelial Cell Basal Medium (ATCC #PCS-300-030) supplemented with Bronchial Epithelial Cell Growth Kit (ATCC #PCS-300-040).

All cells were passed every 2–3 days and maintained at 37°C in a humid atmosphere with 5% CO₂.

Mouse experiments were approved by the local experimental animal committee of the Canton of Bern and performed according to Swiss laws for animal protection (BE76/17). Analysis of samples was approved by the Bern local ethical committee (KEK 2018-01801). Written informed consent was collected from all patients involved in the study.

METHOD DETAILS

Lentivirus and stable cell line production

The plasmids used in this paper are listed in [Data S3](#). Lentivirus production was carried out by co-transfecting HEK293T cells with 12.5 µg of Cas9 plasmid with blasticidin resistance (Addgene #52962), 7.5 µg psPAX2 plasmid, and 4 µg of the packaging pVSVg plasmids, using Lipofectamine2000. 24 h before the transfection, 2.5×10^6 HEK293T cells were seeded in a 10 cm dish coated with Poly-L-Lysine (Sigma #P4832) (diluted 1:5 in 1X PBS). The supernatant containing viral particles was harvested 24, 48, and 72 h after transfection. Viral particles were then concentrated 100-fold by adding 1 volume of cold PEG-it Virus Precipitation Solution (BioCat #LV810A-1-SBI) to every four volumes of supernatant. After 12 h at 4°C, the supernatant/PEG-it mixture was centrifuged at $1,500 \times g$ for 30 min at 4°C, resuspended in 1X PBS, and stored at -80°C until use.

For the generation of stable Cas9-expressing cell lines, A549 and H460 were incubated for 24 h with a culture medium containing concentrated viral preparation carrying pLentiCas9-T2A-BFP and 8 µg/mL polybrene. Infected cells were selected for at least five days with blasticidin (8 µg/mL) and then were FACS-sorted two times, to have at least 60% BFP-positive cells.

DECKO and lentiviral production

For the design and cloning of DECKO plasmids, we used our previously-described protocol^{30,92} (<http://crispeta.org.eu/>).

All the pgRNA guides for CRISPR-del validations are reported in [Data S4](#).

To produce lentivirus carrying the pDECKO plasmid, we followed the same protocol. After infection with pDECKO plasmid-carrying viruses, cells were selected with puromycin (2 µg/mL) for at least three days.

Library design

We downloaded Gene Transfer Format (GTF) annotations from the following sources: i) GENCODE annotation release 19 (GRCh37) from genecodegenes.org; ii) BIGTranscriptome annotation³⁷ from <http://big.hanyang.ac.kr/CASOL/>; iii) FANTOM CAT.¹⁰ We also generated a novel transcriptome assembly of A549 RNA-seq^{39,40} using StringTie,⁹⁵ version 1.3. All 4 annotations were merged into a final annotation using the StringTie '-merge' option.

All lncRNAs from the merged annotation were filtered thus: First, those with transcription start sites (TSS) overlapping or <2kb up or downstream of any protein-coding gene exon included in the GENCODE annotation were removed. Second, expression was calculated with RSEM v1.3⁹⁷, using the A549 RNA-seq data used to generate the novel transcriptome assembly, and transcripts with FPKM <0.1 were removed. The remaining TSSs within 300 bp from each other were clustered into a single TSS cluster. TSS clusters were intersected with ENCODE evidence source specific to A549 cells: Cap Analysis of Gene Expression (CAGE), DNase I hypersensitivity sites, and ChromHMM marks: Active TSS, Flanking TSS, Promoter Downstream TSS, Flanking TSS Downstream, Genic enhancer1, Genic enhancer2, Active Enhancer 1, Active Enhancer 2, Weak Enhancer and Bivalent-Poised TSS.^{39,40,96} Candidate TSS clusters were prioritised by the number of evidence sources.

We designed neutral control pgRNAs in genomic regions not expected to affect cell phenotype. We retrieved 10 regions in the AAVS1 gene loci from the publication of Zhu and colleagues.⁴⁹ To this set, we added a set of 65 randomly selected intergenic regions (>10 kb distant from nearest gene annotation) and 25 intronic regions (for introns >5 kb in length). Moreover, 53 positive (promoting cell growth) and 50 negative (opposing cell growth) protein-coding gene (PCG) controls, with known roles in promoting/opposing cancer cell growth and cisplatin resistance were added. These were manually selected from literature and retrieved from the paper of Zhu and colleagues.⁴⁹ The complete list of genes contained in the library is available in [Table S1](#).

10 unique pgRNAs were generated for each candidate TSS cluster region with CRISPETA⁹² using the following parameters: -eu 0 -ed 0 -du 1000 -dd 1000 -si 0.2 -t 0,0,0,x,x -v 0.4 -c DECKO. During design, the CRISPETA software's off-targeting filters were employed. We performed repeated designs with decreasing stringency until 10 pgRNAs for each target were identified. Specifically, in the first run, only pgRNAs without mismatches were allowed. If < 10 pgRNAs per candidate were identified, the parameters were subsequently relaxed: in the second round one off-target with 2 mismatches was allowed; in the third round, the design region was repeatedly increased in size. A summary can be found in [Data S4](#).

The final library design comprised 12,000 unique sequences of length 165/166 bp, with overhangs compatible with cloning into the pDECKO plasmid.^{30,92} The median distance between the pgRNAs is shown in [Figure S1D](#).

Library cloning

The library was synthesised as single-stranded oligonucleotides by Twist Bioscience (USA), and upon arrival resuspended in nuclease-free low Tris-EDTA (TE) buffer (10 mM Tris-HCl, pH 8.0 and 0.1 mM EDTA) to a final concentration of 10 ng/µL. This was PCR amplified using the Oligo-Fw: 5'-ATCTTGTGGAAAGGACGAAA-3' and Oligo-Rev: GCCTTATTTAACTTGCTATTTTC (PCR reaction ssDNA to dsDNA detailed in [Data S4](#)) with the following conditions: 95 °C × 1 min; 10 cycles of (95 °C × 1 min, 53 °C × 20 s, 72 °C × 1 min); 72 °C × 10 min. The amplification product was purified using the QIAquick PCR Purification Kit (Qiagen

#28104) according to the manufacturer's instructions. The correct amplicon size was checked on a 2% agarose gel at 100V for 40 min.

The steps of cloning follow the low-throughput protocol described in.³⁰ In the first step, the pDECKO_mCherry plasmid was digested following the pDECKO_backbone plasmid digestion conditions listed in [Data S4](#). The amplified library was inserted into the digested plasmid, using Gibson Assembly mix (obtained from 'Biomolecular Screening & Protein Technologies' Unit at CRG, Barcelona) at 50°C for 1 h (200 ng of pDECKO_mCherry plasmid, 20 ng amplified library, H₂O up to 10 μL, 10 μL of Gibson mix 10 μL). 1 μL of the Gibson reaction was delivered to 25 μL of electrocompetent Endura™ cells (Lucigen #60242-2) using Gene Pulser/MicroPulser Electroporation Cuvettes, 0.1 cm gap (Biorad #16520891). The library coverage of 66.7X was estimated by counting the number of obtained bacterial colonies divided by the total number of different sequences in the designed library (12,000). The intermediate plasmid obtained in this step contains the pgRNA variable sequences, but still lacks the constant part of the first sgRNA and the H1 promoter ([Figure S1B](#)).³⁰

In the second step of cloning, the intermediate plasmid was digested by Bmsbl enzyme (ThermoFisher #ER0451). After purification, the constant insert was assembled by ligation, by using PAGE purified and 5' phosphorylated long oligos (Long oligos to generate pDECKO constant part listed in [Data S4](#)), as explained in Pulido-Quetglas C. et al.⁹² Afterwards, 5 μL of the ligation product was transformed and used for the electroporation of electrocompetent Endura cells as described above. Clones were tested by colony PCR and by Sanger sequencing using colony PCR primers ([Data S4](#)). The colony PCR conditions are listed in [Data S4](#). The overall library quality was evaluated by NGS sequencing. Briefly, the plasmid containing the pgRNAs was PCR amplified with Primers for NGS sequencing (listed in [Table S3](#)), and purified using Agencourt AMPure XP beads (Beckman Coulter #A63880), according to the manufacturer's protocol. The purified product was sequenced by Illumina at a depth of 20M PE125 reads. The reads were aligned to the pgRNAs library and the read distribution of each pgRNA was determined using the Ineq package in R (version 3.5.3) to calculate both the Lorenz-curve and Gini-coefficient ([Figure S1C](#)).

Lentiviral titer calculation and infection

To achieve the desired MOI of 0.3–0.4, a titration experiment in A549 and H460 cells was performed. 2×10^6 cells were plated in each well of a 12-well plate and supplemented with 8 μg/mL polybrene. Each well was treated with viruses ranging from 2.5 to 50 μL and transduced via spin-infection as previously described.⁹⁷ After centrifugation, the media was replaced with complete fresh media without polybrene and incubated overnight. The following day, cells were counted and each well was split into two equal aliquots, of which one was treated with 2 μg/mL puromycin. After 72 h, the MOI was calculated by dividing the number of surviving cells in the puromycin well, by the number in the puromycin-free well. The MOI of 0.3 was used for all screening experiments. For large-scale screens, 120M cells were seeded in 12-well plates with a density of 2M per well for spin-infection. The following day, cells were pooled together and a fresh puromycin-containing (2 μg/mL) medium was added. Puromycin selection was maintained for six days until phenotypic screens began.

CRISPR screens

One week after infection (Time point 0 or T₀), cells were counted and the reference sample was collected (T₀, 16M cells corresponding to a library coverage >1,000x). For all screens, cells were cultured in 150 mm culture-treated dishes and passed every 2-3 days.

Proliferation

Dropout screens: at T₀ 16M of cells were plated and passaged to maintain a coverage >1,000X (defined as the number of cells divided by the number of unique library sequences). Cells were harvested at 14 and 21 days for gDNA extraction. CFSE screens: At T₇, 16M cells were seeded and starved for 24 h with media lacking FBS. Then cells were stained using CellTrace CFSE Cell Proliferation Kit (ThermoFisher #C34570) following the manufacturer's instructions. One aliquot of stained cells was immediately analyzed by flow cytometry, while the rest were plated with normal media. Five days later (T₅), cells were sorted into two populations: 20% brightest (slow-growing) and 20% least bright (fast-growing). The two populations were plated separately and, five days later (T₁₀) subjected to another round of staining and sorting.

Cisplatin screen

Optimal cisplatin working concentrations were established via dose-response and cell doubling time ([Figure S2C](#)). In the dose-response, 3,000 A549 and H460 cells were plated in 96-well plates and treated with a range of cisplatin concentrations (0.5; 1; 2; 2.5; 5; 6.5; 8; 12.5; 25; 50 μM). After 72 h, CellTiter-Glo 2.0 (Promega #G9242) was added to the media (1:1), and luminescence was recorded. For the cell doubling time, 1M cells were plated in 10 cm plates. Different cisplatin concentrations were added at indicated concentrations, and living cells were counted every 2-3 days up to 14 days. Cisplatin survival screen: 48 and 96M cells were plated at T₀ and treated with 6.5 and 25 μM of Cisplatin for A549 cells, corresponding to IC₃₀ and IC₈₀, respectively. Two different cisplatin concentrations were used to increase the dynamic range of the screens and account for diverging effects of different doses: a mild concentration (IC₃₀) treatment decreases cell proliferation by about 30%. On the other hand, high concentration treatments induce proliferative arrest or cell death.⁹⁸ Cell pellets were collected after 14 and 21 days. The death screen was carried out as follows: 144M cells were seeded and treated with cisplatin at 2 and 1 μM (IC₂₀) for A549 ([Figure S2C](#)). Every 24 h, for five days, floating (dead) cells were collected and pooled together for gDNA extraction.

Migration screen

To test the optimal conditions, the following set-up experiment was performed. 0.5 M A549 cells/well were seeded in 5 Boyden chambers (Corning, PC Membrane, 8.0 μm , 6.5 mm #3422-COR). Each migration assay was stopped at a different time point (ranging from 5 h up to 48 h; Figure S2G). 48 h was selected as the time point for the following experiment. At T0 infected cells (~16M) were divided and seeded in the upper part of 32 transwell inserts (0.5 M cells/transwell). The upper part of transwell inserts was filled with media lacking FBS, and the lower part with media containing 10% FBS. After 48 h cells in the upper part of the chamber (impaired migration) and lower part (accelerated migration) (Figure 2C) were trypsinized and plated separately for 48 h, after this time, cells were counted and collected for gDNA extraction. Control cells that did not undergo the migration assay were harvested at the same time as a reference population.

Genomic DNA preparation and sequencing

Genomic DNA (gDNA) was isolated using the Blood & Cell Culture DNA Midi (5e6–3e07 cells) (Qiagen #13343), or Mini (<5 $\times 10^6$ cells) Kits (Qiagen #13323) as per the manufacturer's instructions. The gDNA concentrations were quantified by Nanodrop.

For PCR amplification, gDNA was divided into 100 μL reactions such that each well had at most 4 μg of gDNA. Each well consisted of 66.5 μL gDNA plus water, 23.5 μL PCR master mix (20 μL Buffer 5X, 2 μL dNTPs 10 μM , 1.5 μL GoTaq; Promega #M3001), and 5 μL of the forward universal primer, and 5 μL of a uniquely barcoded P7 primer (both stock at 10 μM concentration). PCR cycling conditions: an initial 2 min at 95°C; followed by 30 s at 95°C, 40 s at 60°C, 1 min at 72°C, for 22 cycles; and a final 5 min extension at 72°C. Forward and reverse oligos for PCR and NGS of the library are listed in Table S3. PCR products were purified with Agencourt AMPure XP SPRI beads according to the manufacturer's instructions (Beckman Coulter #A63880). Purified PCR products were quantified using the Qubit dsDNA HS Assay Kit (ThermoFisher #Q32854). Samples were sequenced on a HiSeq2000 (Illumina) with paired-end 150 bp reads at coverage of 40M reads/sample.

Screen hit identification and prioritization

The raw sequencing reads from individual screens were analyzed by using CASPR.⁹⁹ The quality of all NGS experiments was monitored across several metrics using the CASPR analysis pipeline. Overall, 36% of the reads were usable, while recombination events affected a low rate (typically <3%) of reads. After the mapping step, the obtained counts per million (cpm) for each pgRNA were filtered to remove sequences with 3 > cpm>666. Low scoring guides were removed by GuideScan,¹⁰⁰ and a batch effect correction was applied using MageckFlute.¹⁰¹ After all the corrections, the table count was provided to CASPR to calculate log₂-Fold Change and FDR corrected p-values at a target level.

Replicate correlation analysis was performed based on CASPR intermediate files providing normalized read counts for each replicate per sample. Pearson correlation was calculated for log₂-transformed read counts of all pgRNAs (guide level) targeting lncRNA regions excluding controls, guide level log₂-transformed fold change (log₂FC) (treatment sample 'trt'/control sample 'ctr) and gene level log₂-transformed fold change. Gene level (replicate specific) log₂FC was derived as the median of log₂FC values from all pgRNAs (filtered as described) targeting the same genomic region according to CASPR and MAGeCK's method⁹⁷ or the average of the top 3 guides similar to previous studies.²⁵ Log₂FC values were also Z score scaled, based on the mean and SD of the neutral control pgRNAs.

At the single-screen level, we selected the hits with FDR<0.2 and LFC>0 for the positive screens (i.e. CFSE, death, and migration) and FDR<0.2 and LFC<0 for the dropout and cisplatin screens.

To integrate multiple screens an integrative target prioritization pipeline (TPP) was designed, applying two different approaches in parallel: the Robust Rank Aggregation (RRA)¹⁰² to compute a ranking based on the effect size (CASPR log₂FC) across screens, and an empirical adaptation of Brown's method (EBM)¹⁰³ to combine the significance values (CASPR p-value) of each candidate across screens. The RRA-scores were converted to exact p-values using the rho-score correction from the same R package. Subsequently, the harmonic mean p-value (HMP)¹⁰⁴ was calculated using the two significance scores from RRA and EBM. These p-values were corrected for multiple hypothesis testing using the Benjamini & Hochberg method, and a cutoff of FDR<0.2 was used to define hits. The code is available at <https://doi.org/10.5281/zenodo.6912510>.

Enrichment scores and nominal p-values (GSEA simulation, n = 10,000) of positive and neutral control genes were used as an indication of the quality of the ranking, as well as the fraction of detected genes previously linked to lung cancer.⁴⁹ Positive and neutral control genes were also used as "true positives/false negatives" and "false positives/true negatives" respectively to calculate Receiver Operating Characteristics (ROC) curves and associated statistical metrics.

Statistical analysis and data visualization was performed using R software version 4.1.2 and the following R packages: ggplot2 (3.3.5), ggpubr (0.4.0), ggtern (3.3.5), ggrepel (0.9.1), ggbeeswarm (0.6.0), GGally (2.1.2), Gmedian (1.2.6), GSEABase (1.54.0), clusterProfiler (4.0.5), harmonicmeanp (3.0), metap (1.8), Hmisc (4.6-0), precrec (0.12.8), MASS (7.3-55), car (3.0-12), eulerr (6.1.1), SuperExactTest (1.1.0), UpSetR (1.4.0), metaRNASeq (1.0.7).

Public RNA-sequencing data

101 KRAS⁺ Lung Adenocarcinoma (LUAD) RNA-seq samples were downloaded from TCGA (gdc.cancer.gov), applying the following filters: Adenocarcinoma - not treated - KRAS mutated, and the expression of target genes was estimated using HTSeq.¹⁰⁵ Another independent cohort of LUAD RNA-seq *ex vivo* data, containing 87 tumor and 77 adjacent normal tissue samples, was obtained from the TANRIC.^{61,106}

PCR amplification from genomic DNA

gDNA was extracted with GeneJET Genomic DNA Purification Kit (ThermoFisher #K0702) from pDECKO-transduced A549-Cas9-expressing cells. The PCR was done with genomic primers flanking the deleted region (Data S4) as shown in Figure 1E, using the Phusion High-Fidelity DNA Polymerase (2 U/ μ l) (ThermoFisher #F-530S). The product was run on a 1% agarose gel.

Competition assay

A549 cells were infected with DECKO lentiviruses expressing fluorescent proteins. Viruses expressing control pgRNAs targeting AAVS1 also expressed GFP protein (pgRNAs-AASV1-GFP+), while the pgRNAs targeting candidate lncRNAs expressed mCherry. After infection, and seven days of puromycin (2 μ g/mL) selection, GFP and mCherry cells were mixed 1:1 in a six-well plate (150,000 cells). Cell counts were analyzed by LSR II SORP instrument (BD Biosciences) and analyzed by FlowJo software (Treestar).

Patient-derived xenograft organoids

The KRAS⁺ patient-derived organoid BE874 was derived in the following way. Small pieces (~1–2 cm³) of lung cancer tissue (provided by the Institute of Pathology, University of Bern) were taken from the surgically resected lung cancer specimen with patients' informed consent. Parts of the sample (pieces of around 5 mm) were separated and implanted subcutaneously into the flanks of 6 weeks old NOD.Cg-Prkdcscid112rgtm1Wjl/SzJ (NSG) mice (purchased from Charles River Laboratories) for cancer engraftment.¹⁰⁷ After successful engraftment, tumor-bearing mice were euthanized and tumors were resected. Single cells were isolated through mechanical and enzymatic tissue disruption for the generation of BE874 organoids. Genotyping of BE874 organoids was performed at the Institute of Pathology, University of Bern, using KRAS targeted sanger sequencing. KRAS c.34G>T (p.Gly12Cys) mutation was detected in both BE874 organoids and the corresponding primary cancer. Analysis of samples was approved by the Bern local ethical committee (KEK 2018-01801). Written informed consent was collected from all patients involved in the study.

NSG mice were housed under specific pathogen-free conditions in isolated ventilated cages on a regular 12-h/12-h cycle of light and dark. Mice were fed *ad libitum* and were regularly monitored for pathogens. Mouse experiments were approved by the local experimental animal committee of the Canton of Bern and performed according to Swiss laws for animal protection (BE76/17).

Antisense oligonucleotides

Locked nucleic acid ASOs were designed using the Qiagen custom LNA oligonucleotides designer (www.qiagen.com). Per each target, we designed from 3 to 5 different ASOs. On the day of the transfection, 300,000 cells were counted and plated on a 6-well plate. ASOs were transfected into the cells still in suspension, using Lipofectamine3000 (ThermoFisher #L3000015) with a final 25 nM in 2 mL media for A549, H460, NCI-H441, and MRC5-CV1 and 10 nM in 2 mL for HBEC3-KT and CCD-16LU, following the manufacturer's instructions.

For cocktail experiments, the final concentration of the ASOs mix was kept at 25 nM. The media was refreshed 24 h post-transfection and cells were harvested to check the efficiency of gene knockdown or sub-cultured for cell viability experiments. The ASOs target sequences are listed in Table S2. We checked ASOs penetration in cells employing the 5'-FAM-labelled control ASO A provided by Qiagen (Figure S4J).

2D cell viability assay

Cell viability assay was carried out in 2D cell lines by using CellTiter-Glo 2.0 (Promega #G9242). The assays were performed according to the corresponding manufacturer's protocol. 24 h after the transfection, A549, H460, NCI-H441, H1975, H157, WVU-Ma-0005A, H820, and H1650 cells were harvested, counted and 3,500 cells/well were seeded in triplicate in 96 well plates. For Mrc5-SV1, HBEC3-KT, and CCD-16LU 3,000, 3,500, and 1,000 cells/well were seeded, respectively. The number of viable cells was estimated after 24, 48, 72, 96, and/or 144 h. On the day of the measurement, a mix of 1:1 media and CellTiter-Glo was added to the plates and the luminescence was recorded with Tecan Infinite 200 Pro. The Student's *t* test was used to evaluate significance ($p < 0.05$).

3D cell viability assay

NCI-H441 cells were detached, counted, and 200,000 cells were plated in 24 well plates. The ASO-Lipofectamine3000 mix was delivered to the cells in suspension as described above. After 24 h, the cells are detached, counted, and seeded onto 96-well Black/Clear Round Bottom Ultra-Low Attachment Surface Spheroid Microplate (Corning #4520) in 20 μ L domes of Matrigel Matrix GFR, LDEV-free (Corning #356231) and RPMI-1640 growth medium (1:1) with a density of 20,000 cells per dome. Matrigel containing the cells was allowed to solidify for an hour in the incubator at 37°C before adding DMEM-F12 (Sigma #D6421) media on top of the wells (40 and 80 μ L for the wells intended for the first and second-time point, respectively). The spheroids were allowed to grow in the incubator at 37°C in a humid atmosphere with 5% CO₂. After 4 h the number of viable cells in the 3D cell culture was recorded as time point 0 (T0), CellTiter-Glo 3D Cell Viability Assay (Promega #G9682) was added to the wells, following the manufacturer's instructions, and the contents transferred into a Corning 96-well Flat Clear Bottom White (Corning #3610) for the reading with the Tecan Infinite 200 Pro. After one week the measurement was repeated.

BE874 organoids were generated and expanded using a special composition of lung cancer organoids (LCO) medium (Data S4).

BE874 organoids were transfected with ASOs as described for the NCI-H441. 24 h after transfection the cells were detached, counted, and seeded onto Corning 96-well Flat Clear Bottom White (Corning #3610) in 20 μ L domes of LCO growth medium and

Matrigel (1:1) with a density of 20,000 cells per dome. The Matrigel domes containing PDX-organoids were allowed to solidify for an hour in the incubator at 37°C before adding 80 μ L LCO growth media on top. The organoids were allowed to grow in the incubator at 37°C in a humid atmosphere with 5% CO₂. After 24 h, 100 μ L of CellTiter-Glo 3D Cell Viability Assay (Promega #G9682) were added to the wells intended for the T0, and the luminescence was recorded with Tecan Infinite 200 Pro. After three days the 80 μ L of LCO media were added to the wells to keep them from drying out. After one week, the media was aspirated and replenished with fresh 80 μ L, before proceeding with the measurement with CellTiter-Glo 3D.

Rescue experiments

To overexpress *CHILL1* and *GCAWKR*, the full-length sequences of these genes (ENST00000520840.1; ENST00000558254.5, respectively) were synthesized by Gene Universal Inc. and cloned into pcDNA3.1 vector to generate the overexpressing plasmids. And the empty vector pcDNA3.1 was considered as a control. Cell transfection for A549 cells was performed using Lipofectamine 3000 (Invitrogen, CA). Successfully transfected cells were selected with puromycin (2 μ g/mL) for 96 h. The transfection efficiency was confirmed by RT-qPCR and cells were collected for the subsequent experiments.

Apoptosis assay

Annexin V and viability dye were used to detect early apoptotic and dead cells, respectively. 24 h after the transfection cells were counted and 150,000 cells were suspended in 100 μ L of 1X PBS. The viability dye (ThermoFisher #35111) was added (1:5,000) in 100 μ L of 1X PBS and cells were incubated for 30 min at 4°C. Cells were then washed once with 1X PBS and suspended in 100 μ L of Annexin buffer PH 7, added PE Annexin (1:200; ThermoFisher #L34960), and incubated for 30 min at 4°C. After a wash with 1X PBS, cells were resuspended in 300 μ L of Annexin buffer and underwent the flow analysis by using the LSR Fortessa instrument (BD Biosciences). Unstained cells were used as control.

Cell cycle assay

Cells were transfected with ASOs using Lipofectamine3000 according to the manufacturer's instructions. After 24 h cells were harvested and fixed with 100 μ L of BD Cytifix/Cytoperm Fixation (BD Biosciences #51-2090KZ) for 30 min at room temperature. The cells were then washed with 200 μ L of 1X BD Perm/Wash (BD Biosciences #51-2091KE) and resuspended in 100 μ L of 1X PBS. The Ki-67 Antibody (ThermoFisher #12-5698-82) was added (1:100) and incubated for 30 min at 4°C. Wash again with 1X BD perm/wash and stain with DAPI (Roche #10236276001) was added (1:10,000) in 100 μ L of 1X PBS. Incubate 5' at room temperature and wash with 1X PBS. Acquire the data with the Fortessa flow cytometer. Data analysis was performed using FlowJo, and the different cell cycle phases were determined according to the Dean-Jett Fox (DJF) model.

Low-throughput migration assay

Migration assay was performed as previously described.¹⁰⁸ 24 h after ASOs transfection, A549 cells were counted and seeded in the upper part of Boyden chambers with a density of 35,000 cells/transwell. The upper part of transwell inserts was filled with media without FBS, while the lower part with media supplemented with 10% FBS to induce the directional movement of cells. After 24 h the cells were washed three times with 1X PBS and stained using 300 μ L of crystal violet 1% for 30 min. Three washes with 1X PBS followed. The cells in the upper part of the membrane were removed by using a cotton swab. The chambers are left to dry overnight. The day after, the crystal violet was solubilized in 1X PBS containing 1% SDS and the absorbance at 595 nm was recorded by using the Tecan Infinite 200 Pro.

RNA isolation and RT-qPCR

To purify total RNAs from cultured cells, a Quick-RNA kit from ZymoResearch (#R1055) was used according to the manufacturer's protocol. RNAs were reverse transcribed to produce cDNAs by using the GoScript Reverse Transcription System Kit (Promega #A5003). The cDNAs were then used for qPCR to evaluate gene expression, using the GoTaq qPCR Master Mix kit (Promega #A6002). The expression of HPRT1 was used as an internal control for normalization. All the RT-qPCR primers are listed in [Data S4](#).

RNA-sequencing and analysis

24 h after ASO transfection, A549, and H460 cells were harvested and the total RNA was extracted as explained before and samples' quality was checked at Bioanalyzer. Libraries were prepared using the NEBNext Ultra RNA Library Prep Kit and sequenced in paired-end 150 format to a depth of 30M reads/sample.

Transcript quantification was performed using Kallisto v0.46.0¹¹⁰ against GENCODE v36.³⁸ Gene level expression was inferred by aggregating the counts of the individual isoforms. Differential expression analysis was performed using Sleuth v0.30¹¹¹. Genes with a q-value <0.2 were considered significant. For *CHILL1*, the genes that were significantly up- and down-regulated with two different ASO were selected. For *GCAWKR*, we selected the pool of common genes deregulated in A549 and H460.

Visualization of the results was produced in R 4.0.0 (R: The R Project for Statistical Computing, n.d.) using ggplot2 package v3.3.2 (Ggplot2 - Elegant Graphics for Data Analysis | Hadley Wickham | Springer, n.d.). Functional enrichment analysis was performed through the enrichR package v2.1.¹⁰⁹

FISH and cell fractionation

Fluorescent *In-Situ* Hybridization (FISH) was performed on A549 cell lines, according to the Stellaris protocol (<https://www.biosearchtech.com/support/resources/stellaris-protocols>). For detection of CHILL1 and GCAWKR at a single-cell level, pools of 25 and 48 FISH probes respectively were designed using the Stellaris probe designer software (www.biosearchtech.com). Cells were grown on round coverslip slides (ThermoFisher, 18 mm), fixed in 3.7% formaldehyde, and permeabilized in ethanol 70% overnight. Hybridization was carried out overnight at 37°C in the hybridization buffer from Stellaris. Cells were counterstained with DAPI and visualized using the DeltaVision microscope.

Nuclear and cytoplasmic fractionation was carried out in A549 cells as described previously.⁸⁰ The pipeline used to analyze the data was adapted from CellProfiler,¹¹⁰ and it is named 'SpeckleCounting'.

ezTracks visualization of RNA elements

Genomic tracks were retrieved for the hg38 human genome assembly from their original publications: predicted neo-functionalized fragments of transposable elements, also known as RIDLs (repeat insertion domains of lncRNA),⁷⁵ RNA structures conserved in vertebrates (CRS),¹¹¹ and ENCODE candidate *cis*-regulatory elements.¹⁰⁸ In addition, the following tracks were downloaded from the UCSC Genome Browser¹¹²: repeat-masked CpG islands, phastCons conserved elements in 7, 20, 30, and 100-way multiple alignments,¹¹³ and repeat families from the RepeatMasker annotation (<http://www.repeatmasker.org>).¹¹⁴

The comprehensive gene annotations for CHILL1 (ENSG00000253616) and GCAWKR (ENSG00000272808 and ENSG00000232386) loci were extracted from the GENCODE v36 GTF file.³⁸ Then, all the exons corresponding to each locus were collapsed into a meta-transcript and output as separate GTF files using BEDTools¹¹⁵ merge. Third, configuration files for each locus were prepared to draw the meta-transcript annotation alongside the genomic tracks using the program.⁷⁶

Copy number status of pan-hallmark candidates

The copy number status of A549 and H460 cells was retrieved from the CCLE (<https://portals.broadinstitute.org/ccle/data>). Then, we intersected the hg19 coordinates of the pgRNA with the hg19 coordinates of the CCLE copy number data.

TCGA-LUAD copy number data were downloaded as 'log2 ratio segment means' using the R package TCGAbiolinks and converted to hg19 coordinates using liftOver. The values of each candidate were averaged across all TCGA-LUAD samples.

The pan-cancer recurrently amplified or deleted genomic regions were downloaded from the ICGC Data Portal (https://dcc.icgc.org/releases/PCAWG/consensus_cnv/GISTIC_analysis; all_lesions.conf_95.rm.cnv.pt_170207.txt.gz). Then, we searched for overlaps between each candidate and the recurrent copy number altered regions ("Wide Peak Limits"). The differences in the proportions of amplified, deleted, or non-copy number altered hits versus non-hits were tested using Fisher's exact tests.

QUANTIFICATION AND STATISTICAL ANALYSIS

Statistical analysis, quantification and visualisation was performed using Graphpad Prism (<https://www.graphpad.com/scientific-software/prism/>), R Statistical Software (<https://www.r-project.org/>; versions 3.5.3, 4.0.0 and 4.1.2) and the following R packages: ggplot2 (3.3.2, 3.3.5), ggpubr (0.4.0), ggtern (3.3.5), ggrepel (0.9.1), ggbeeswarm (0.6.0), GGally (2.1.2), Gmedian (1.2.6), GSEABase (1.54.0), clusterProfiler (4.0.5), harmonicmeanp (3.0), metap (1.8), Hmisc (4.6-0), TCGAbiolinks, liftOver, precrec (0.12.8), MASS (7.3-55), car (3.0-12), eulerr (6.1.1), SuperExactTest (1.1.0), UpSetR (1.4.0), metaRNASeq (1.0.7), enrichR (2.1).

Further software used for quantification and statistical analysis were StringTie⁹⁵ (1.3), RSEM⁹⁵ (1.3), CRISPETa,⁹² CASPR,⁹⁹ GuideScan,¹⁰⁰ MageckFlute,¹⁰¹ Kallisto¹¹⁶ (0.46.0), Sleuth¹¹⁷ (0.30), bedtools¹¹⁵ and Excel (Microsoft).

For all analyses, $p \leq 0.05$ is considered statistically significant unless otherwise specified. Specific details concerning statistical tests for individual experiments are noted in the relevant Figure legends. For detailed statistical analysis of the computational analysis see [Method Details](#).

Supplemental information

Multi-hallmark long noncoding RNA maps reveal non-small cell lung cancer vulnerabilities

Roberta Esposito, Taisia Polidori, Dominik F. Meise, Carlos Pulido-Quetglas, Panagiotis Chouvardas, Stefan Forster, Paulina Schaerer, Andrea Kobel, Juliette Schlatter, Erik Kerkhof, Michaela Roemmele, Emily S. Rice, Lina Zhu, Andrés Lanzós, Hugo A. Guillen-Ramirez, Giulia Basile, Irene Carrozzo, Adrienne Vancura, Sebastian Ullrich, Alvaro Andrades, Dylan Harvey, Pedro P. Medina, Patrick C. Ma, Simon Haefliger, Xin Wang, Ivan Martinez, Adrian F. Ochsenbein, Carsten Riether, and Rory Johnson

Figure S1

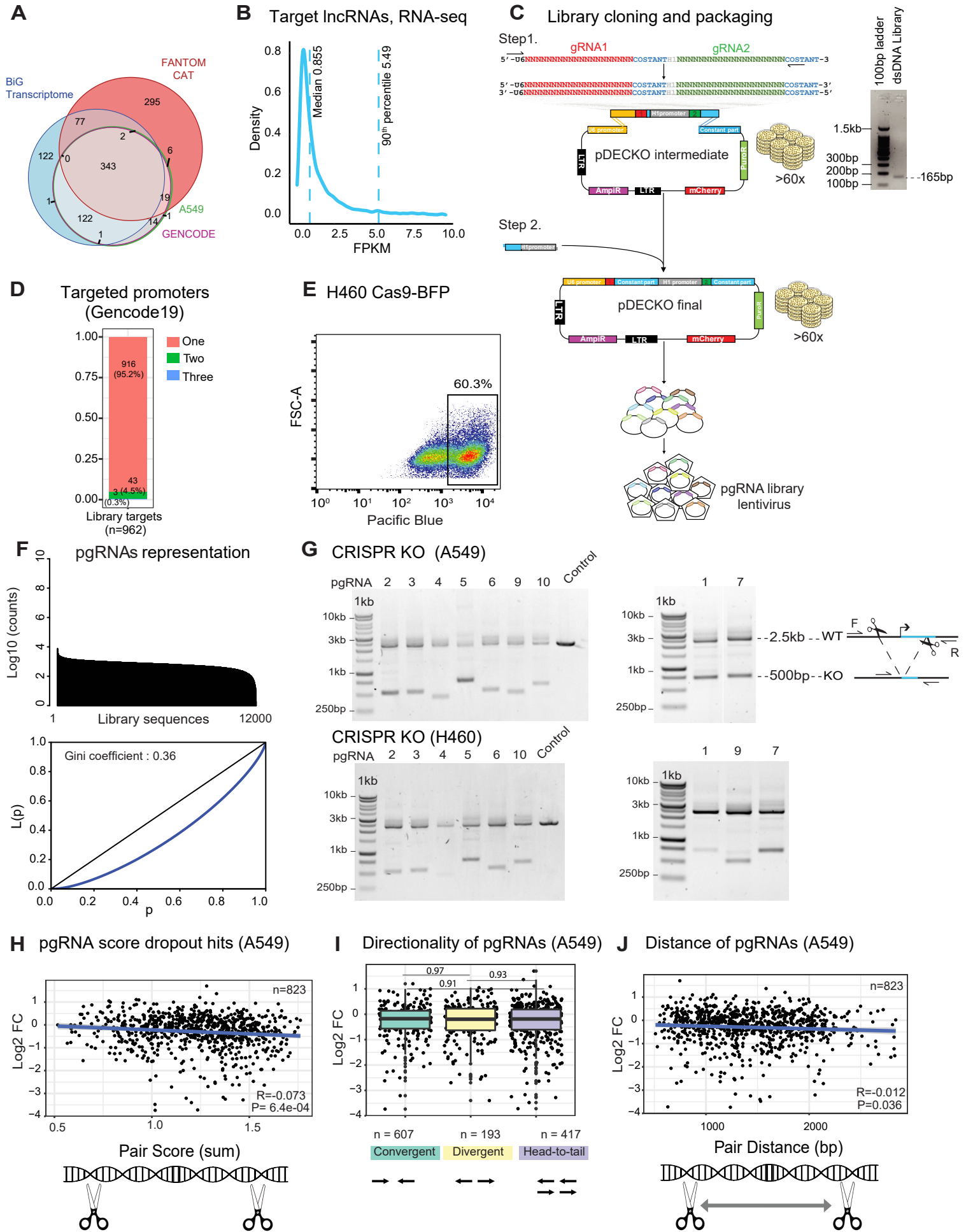


Figure S1. libDECKO-NSCLC1 library creation. Related to Figure 1.

(A) Library design pipeline. LncRNAs from indicated annotations are merged and filtered by TSS proximity to protein-coding genes (<2 kb excluded) and by expression in A549 (<0.1 FPKM excluded). TSS are clustered together if closer than 300bp, then selected based on three evidence sources: CAGE, ChromHMM and DNaseI hypersensitivity. TSS candidates are targeted by 10 paired guide RNA (pgRNA) designs using CRISPETa.

(B) Expression of targeted lncRNAs in A549 cells.

(C) Library cloning. Oligonucleotide library of pgRNAs is amplified by PCR. Two steps of cloning to insert the amplified fragment and the constant part into the pDECKO backbone. Coverage of clones to library sequences was estimated to be >60x. The plasmid library is packaged into viral particles.

(D) Number of independent annotated genes' TSS/promoters targeted by each candidate region. 95.2% of the library targets single lncRNA genes, 4.8% of candidate regions contain two or three independent TSS. Note that classical "bidirectional promoters" comprise TSS from two independent lncRNA genes (green), while a small number of targeted regions (3, blue) contain TSS from three independent lncRNA genes.

(E) Fluorescence activated cell sorting (FACS) was used to sort stable Cas9-expressing H460 cells based on expression of a Blue Fluorescent Protein (BFP) marker. The box indicates the sorted cell populations used in screens.

(F) Library representation. Upper panel: y-axis: Number of reads per pgRNA sequence; x-axis: ranked pgRNAs from library. Less than 0.5% of the total pgRNAs constructs dropped out with no reads. The ratio of 10th – 90th percentile is 4.6-fold. Lower panel: Lorenz curve, depicting library read coverage. Equality is represented by the diagonal.

(G) DNMBP-AS1 locus was targeted by CRISPR-deletion in A549 and H460 cells with multiple pgRNAs. The gene locus as well as the genotyping PCR primers (F, R) are shown in Figure 1E. Agarose gels showing template genomic DNA (gDNA) from cells transfected with non-targeting pgRNA (Control) or DNMBP-AS1 TSS pgRNAs (KO).

(H) Figure depicts pgRNAs targeting lncRNA candidates defined as hits (A549 dropout, FDR<0.2). y-axis: log₂ FC (fold change) in abundance; x-axis: sum of individual sgRNA scores for each pair from RuleSet2 algorithm. Significance estimated using linear model.

(I) as for (H), but separating pgRNAs according to the orientation of their individual sgRNAs.

(J) as for (H), but now for the genomic distance (bp) between the sgRNAs of each pgRNA.

Figure S2

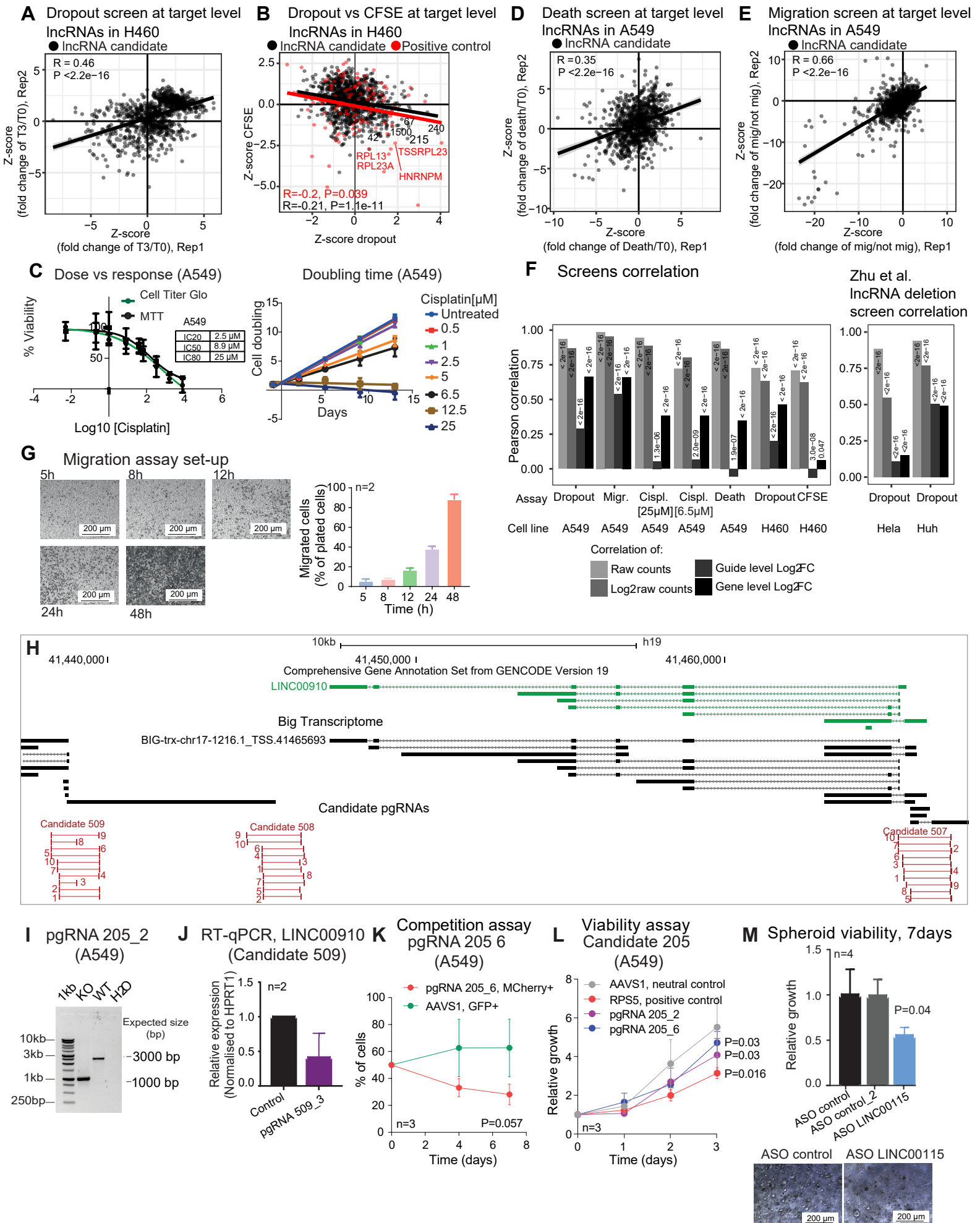


Figure S2. Assessing screen accuracy. Related to Figure 2.

(A) LncRNA candidates (black) correlation between biological replicates of the dropout screen in H460 cells. Data presented as Z-score transformed log₂ FC values. T3: time point three weeks. T0: time point zero. Statistical significance: Pearson correlation.

(B) LncRNA candidates (black) correlation distinct from the positive controls (red) correlation in negative dropout and positive CFSE screens in H460 cells. Data presented as Z-score transformed log₂ FC values. Statistical significance: Pearson correlation.

(C) (Left) Cisplatin dose-response curves in A549 and H460 cells. Error bars: standard deviation. (Right) Cell doublings calculated at indicated cisplatin concentrations. Error bars: standard deviation.

(D) LncRNA candidates (black) correlation between biological replicates of the death screen in A549 cells. Data presented as Z-score transformed log₂ FC values. Statistical significance: Pearson correlation.

(E) LncRNA candidates (black) correlation between biological replicates of the migration screen in A549 cells. Data presented as Z-score transformed log₂ FC values. Statistical significance: Pearson correlation.

(F) Replicates correlation is shown at three levels (raw reads: invariably display high correlations but provide little insight into replicability; pgRNA: typically display lower correlation and may be affected by stochastic effects when library coverage is low; gene levels: integrate the fold changes from the multiple individual pgRNAs. The latter is the most biologically-meaningful readout where technical noise may be overcome through sgRNA integration. (Left) Summary of the screens' correlation. (Right) Zhu et al. 2016⁴⁹ deletion screen correlation. Only lncRNA candidates are taken into account.

(G) Migration screen set-up. A549 cells (0.5M cells/well) were seeded onto transwell inserts and allowed to migrate for the indicated times. After crystal violet staining, cells that migrated through the membrane counted in five randomly selected fields. Results are expressed as means ± standard deviation (n=2).

(H) Genomic locus of Candidate 507, 508 and 509. i) Assaying genomic deletion with pgRNAs for Candidate 205: figure shows agarose gel electrophoresis of PCR product with primers (Supplementary File 5) amplifying the Candidate 205 target region.

(J) RT-qPCR with primers for Candidate 509 RNA (Supplementary File 5). Error bars: standard deviation.

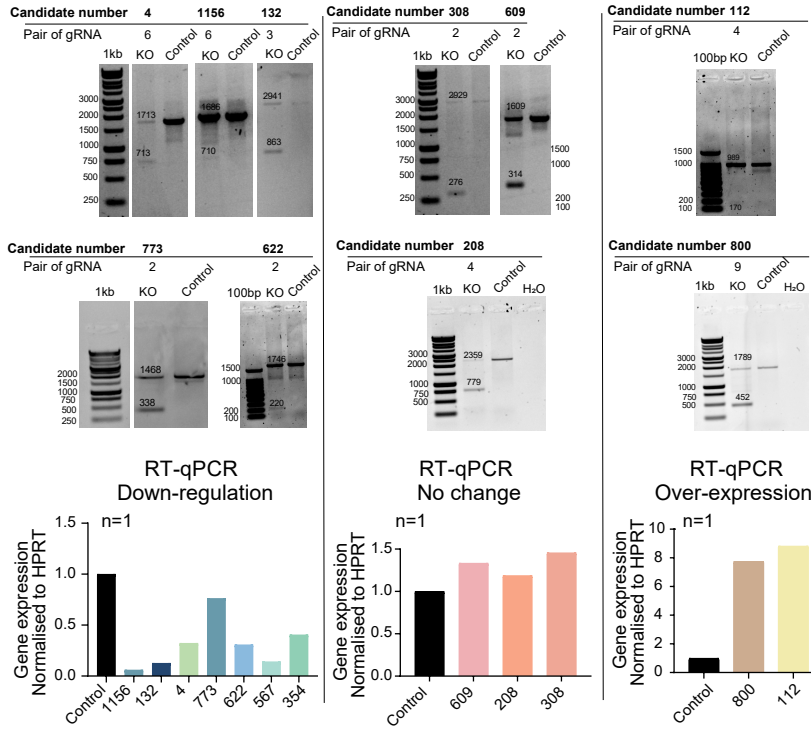
(K) Competition assay with an additional pgRNA targeting Candidate 205. The plot shows the percentage of mCherry+ or GFP+ cells at indicated times (n=3 biological replicates; error bar: standard deviation; two-tailed Student's *t* test).

(I) Cell viability assay with the two pgRNAs targeting Candidate 205 (n=3 biological replicates; error bar: standard deviation; two-tailed Student's *t* test). The cell viability was measured by using the CellTiter-Glo® 2D.

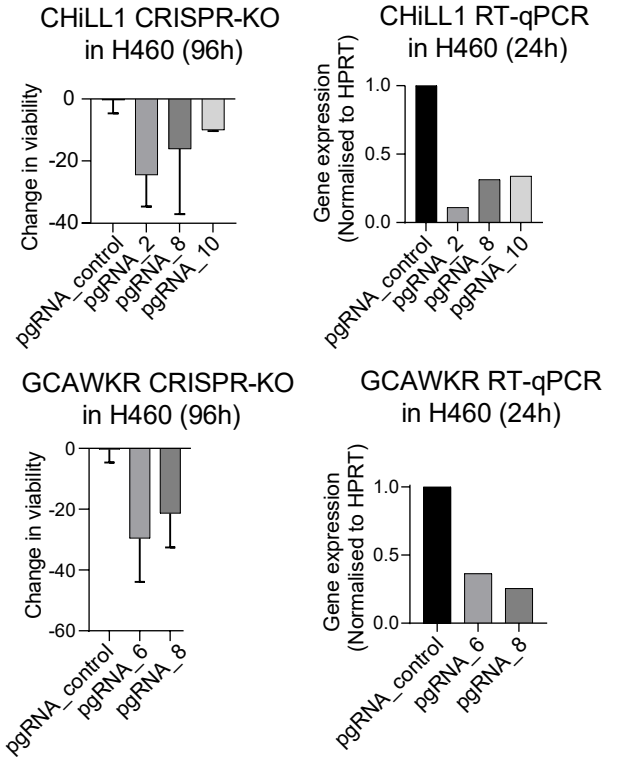
(M) Cell viability in 3D spheroids grown from H441 cells upon ASO knockdown of *LINC00115*. The viability was measured with CellTiter-Glo® 3D, seven days after ASO transfection (n=4 biological replicates; error bars: standard deviation; statistical significance: one-tailed Student's *t* test).

Figure S3

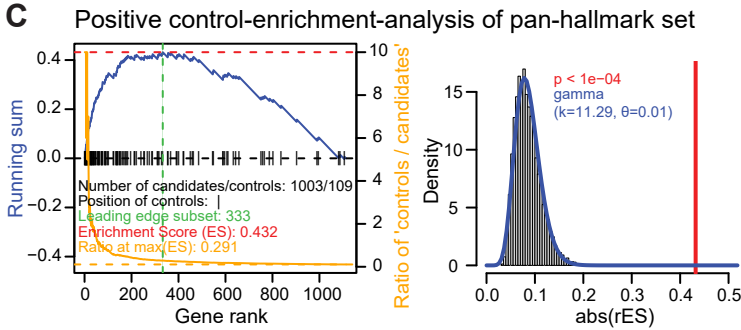
A



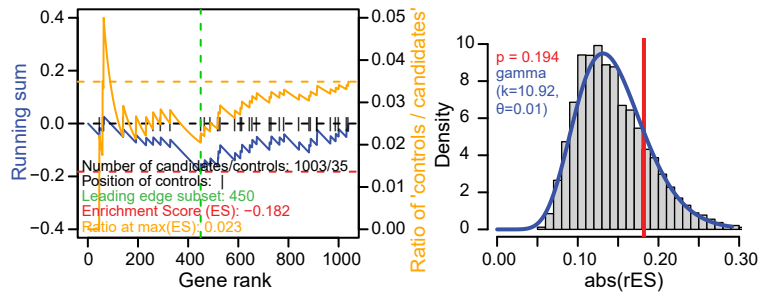
B



C

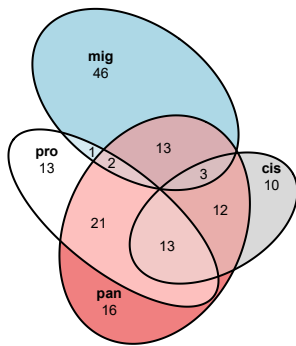


Neutral control-enrichment-analysis of pan-hallmark set



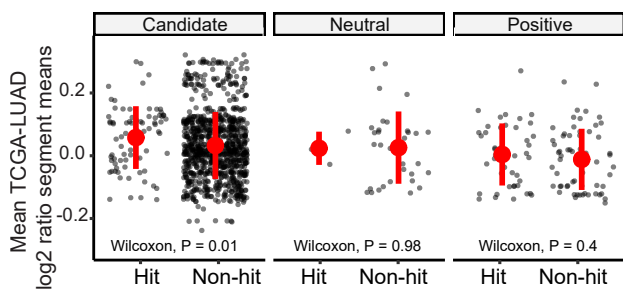
D

Common hits among single phenotype and pan-hallmark



E

TCGA-LUAD copy number in TPP pan-hallmark



F

CCLE copy number in TPP pan-hallmark

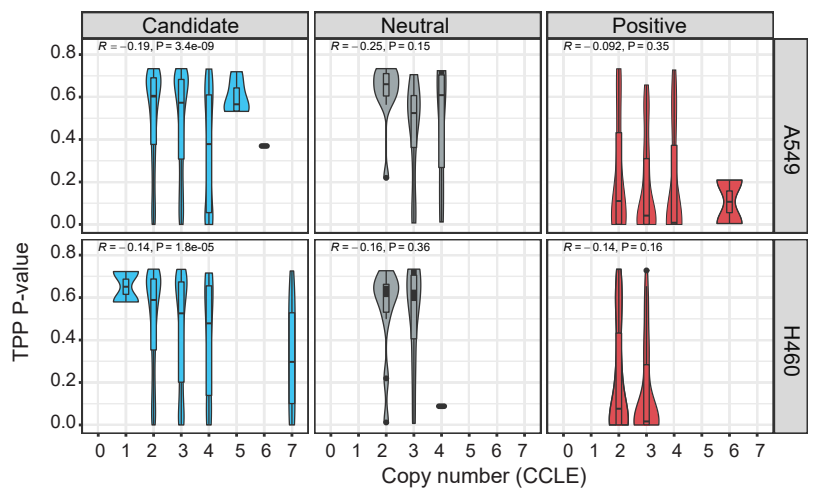


Figure S3. Validation of the method, TPP quality assessment and CNV analysis.
Related to figure 3.

(A) Randomly picked pgRNAs show intended genomic deletion and expression changes in A549-Cas9-BFP. The genomic DNA (gDNA) and RNA were extracted 7 days after transfection. (Top) PCR products from the template genomic DNA (gDNA) of cells transfected with non-targeting pgRNA (Control) or targeting pgRNAs (KO). The expected lengths for Control, and deletion amplicons are indicated. (Bottom) RT-qPCR measurements of the selected genes. 7/12 downregulated genes (left), 3/12 genes with no change in expression (centre), 2/12 upregulated (right).

(B) (Left) Cell viability assay with the three pgRNAs targeting *CHILL1*, and two pgRNAs targeting *GCAWKR* in H460-Cas9-BFP cells (n=2 biological replicates; error bar: standard deviation). Cells were transfected, and selected for 7 days with puromycin, then plated for the assay. The cell viability was measured by using the CellTiter-Glo® 2D. (Right) RT-qPCR measurements of the *CHILL1* and *GCAWKR* expression upon CRISPR-KO with different pgRNAs. RNA extracted 24h after the start of the viability assay.

(C) (Left) Enrichment of positive controls in the top of the TPP ranking results by gene set enrichment analysis (GSEA). The running sum (blue) is calculated by iterating through the ranks, increasing with positive controls, decreasing otherwise. The maximum absolute value of the running sum is the Enrichment Score (ES). Black ticks on the x-axis represent the location of positive controls. The significance of the enrichment is nominally evaluated by simulating 10,000 perturbations of the labelling of the genes. (Right) The same analysis with neutral controls.

(D) The intersection of hits identified by Target Prioritisation Pipeline (TPP) in the indicated datasets. Pro: proliferation; Cis: cisplatin; Mig: migration; Pan: pan-hallmarks, integration of all the screens together.

(E) Copy number status in TCGA-LUAD samples for pan-hallmark lncRNA hits. For each candidate or control, the log₂ (ratio segment means) of each TCGA-LUAD sample was retrieved for the library target region. Then, the log₂ ratio segment means across TCGA-LUAD were averaged for each candidate or control. Red dots and lines display the mean and the standard deviation, respectively. Statistical significance: Wilcoxon test

(F) Relationship between pan-hallmark TPP scores (uncorrected P-values) (y-axis) and copy number status (x-axis) in A549 or H460. Copy number status of the library

target regions was retrieved from the Cancer Cell Line Encyclopedia (CCLE).
Statistical significance: Pearson correlation.

Figure S4

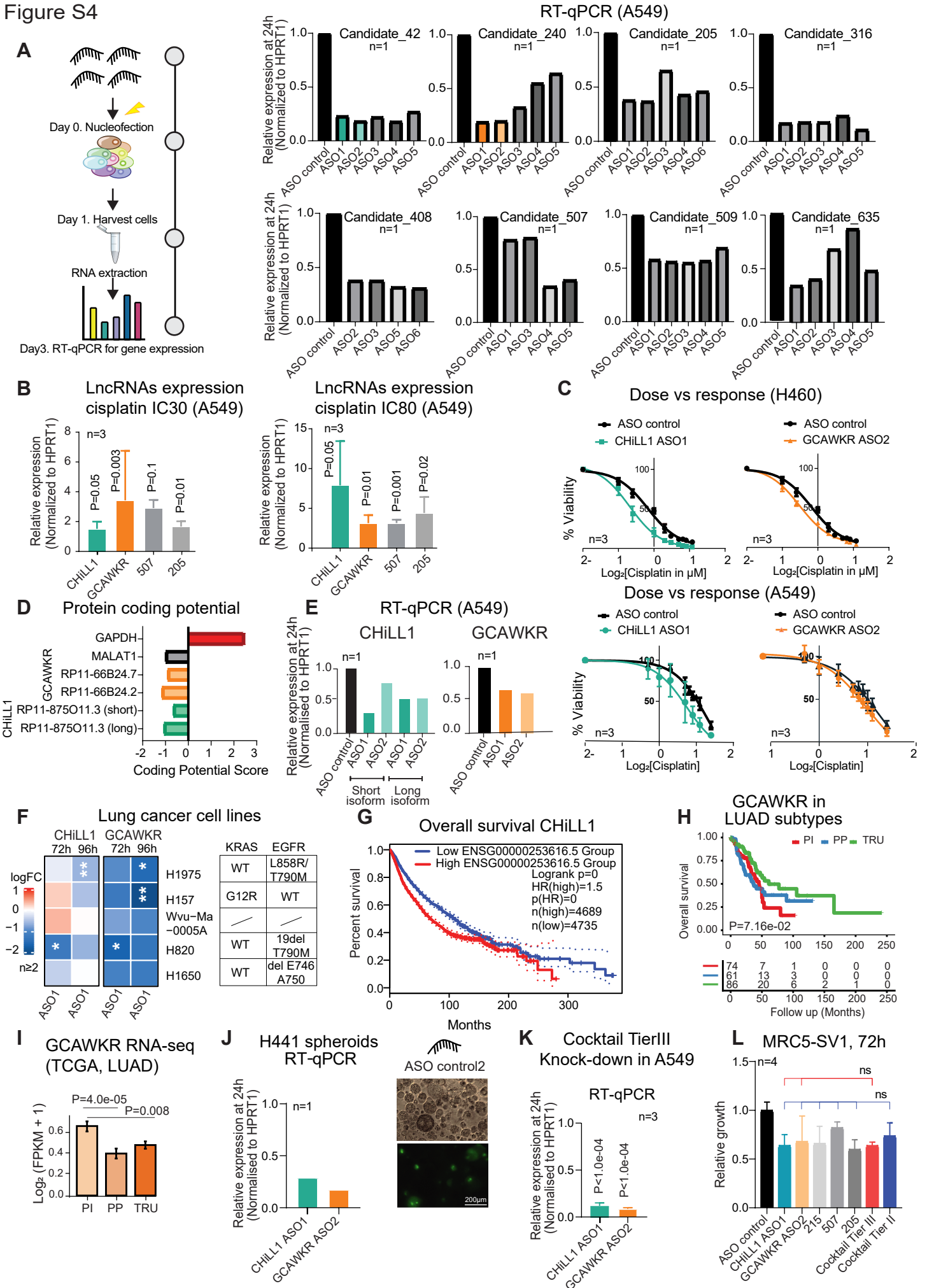


Figure S4. Tier 2 candidates and cancer hallmarks. Related to Figure 4.

(A) (Left) Experimental strategy to test ASO knockdown effectiveness. (Right) Measured gene knockdown by RT-qPCR in response to ASOs.

(B) RT-qPCR of Tier 2 candidates in A549 cells treated with cisplatin IC30 (left) and IC80 (right panel) for 72 h. The control represents the reference expression of the genes in untreated conditions. (n=3, error bars: standard deviation; statistical significance: one-tailed Student's *t* test).

(C) Dose response curves in H460 (top) and A549 (bottom) in cells transfected with ASO control and the best performing ASOs for *CHILL1* (left) and *GCAWKR* (right). Error bars: standard deviation.

(D) Coding Potential Scores (CPS) of *CHILL1* and *GCAWKR* transcripts using the algorithm Coding Potential Calculator¹²⁰. *GAPDH* and *MALAT1* transcripts were used as reference for the protein-coding and non-protein coding, respectively.

(E) *CHILL1* and *GCAWKR* knockdown efficiency measured by RT-qPCR, using two independent ASOs.

(F) The effect of *CHILL1* and *GCAWKR* ASOs in additional NSCLC cell lines. Mutational status is indicated on the right. Columns: time points for the cell viability measurements. Values reflect the mean log₂ FC in viability following ASO transfection, with respect to a control non-targeting ASO, from at least two independent biological replicates. One-tailed Student's *t* test. * indicate P < 0.05; ** indicate P < 0.01.

(G) Kaplan–Meier survival analysis of *CHILL1*. Analysis was performed using GEPIA2 tool with default settings¹²¹, including all the tumours types available in the TCGA dataset.

(H) Kaplan–Meier survival analysis of *GCAWKR* in TCGA data within transcriptional subtypes. Proximal-inflammatory (PI), proximal-proliferative (PP) and terminal respiratory unit (TRU).

(I) *GCAWKR* expression in transcriptional sub-types in TCGA dataset (n=513, Wilcoxon signed-rank tests). Proximal-inflammatory (PI), proximal-proliferative (PP) and terminal respiratory unit (TRU).

(J) Knockdown efficiency measured by RT-qPCR in 3D spheroids with *CHILL1* and *GCAWKR* ASOs relative to ASO control. Error bars: standard deviation. On the right: representative pictures of spheroids transfected with green fluorescent-labelled ASOs.

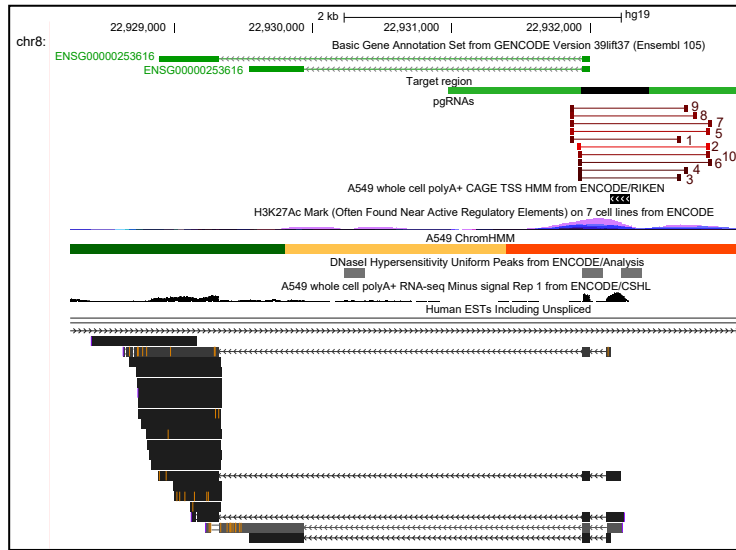
(K) Knockdown efficiency of *CHILL1* and *GCAWKR* measured in the cocktail experiment in A549 cells with *CHILL1* and *GCAWKR* ASOs relative to ASO control

(n=3 biological replicates; error bars: standard deviation; statistical significance: two-tailed Student's *t* test).

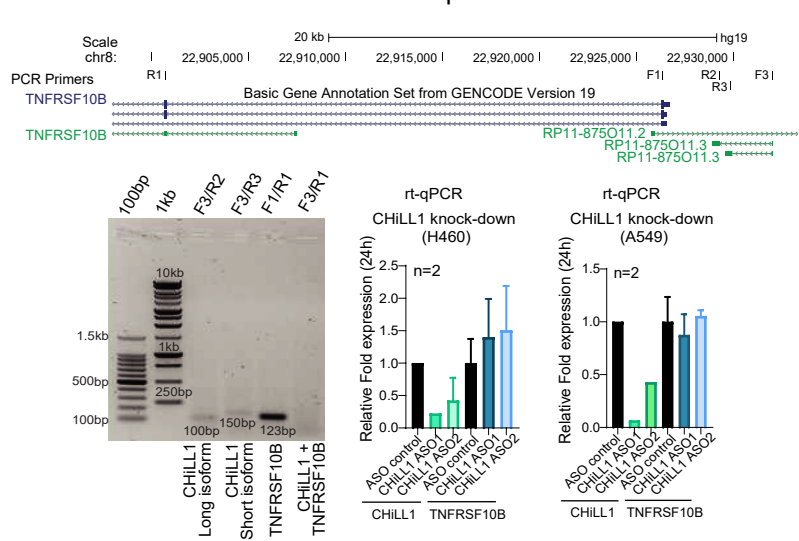
(L) Growth of MRC5-SV1 cells in response to indicate ASO transfections (n=4 biological replicates; error bars: standard deviation; statistical significance: one-tailed Student's *t* test).

Figure S5

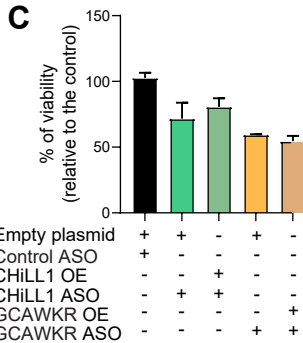
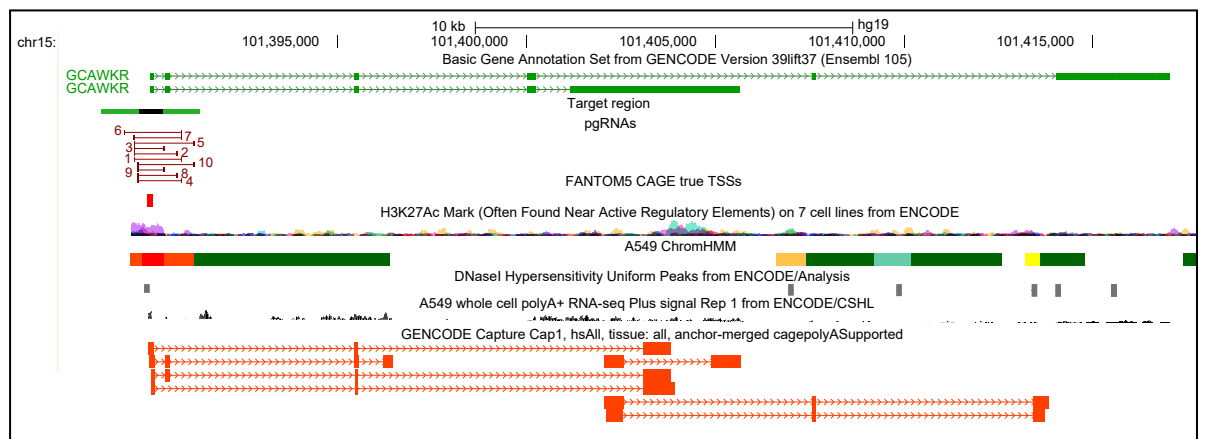
A CHILL1 locus



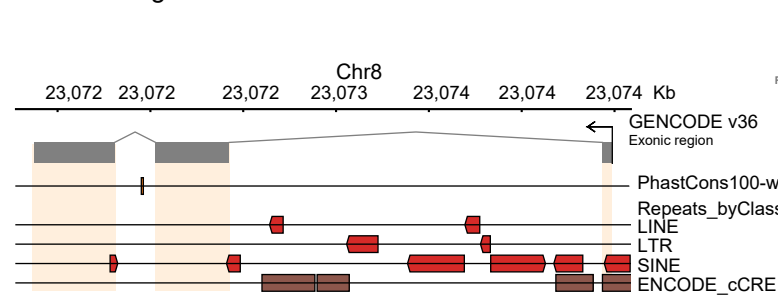
B CHILL1 locus and RT-PCR set up



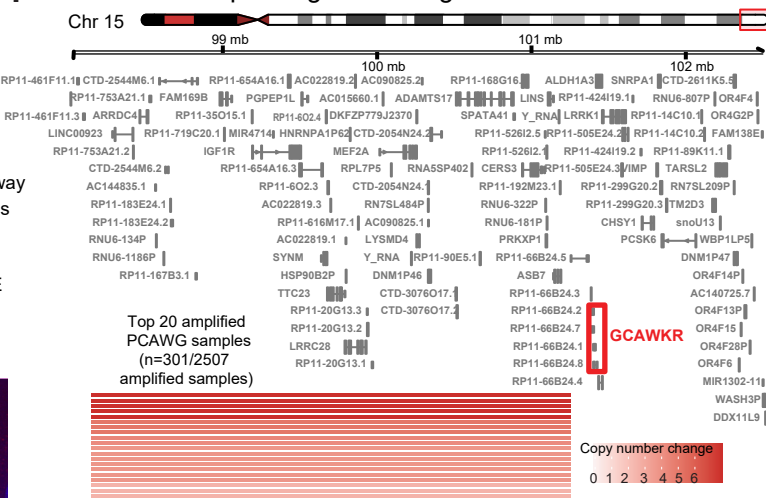
D GCAWKR locus



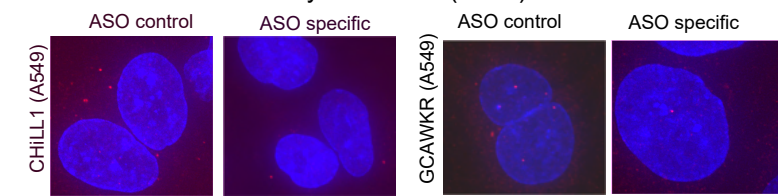
E CHILL1 genomic elements



F GCAWKR amplified genomic region



G Fluorescence in-situ hybridisation (FISH)



H GCAWKR conservation

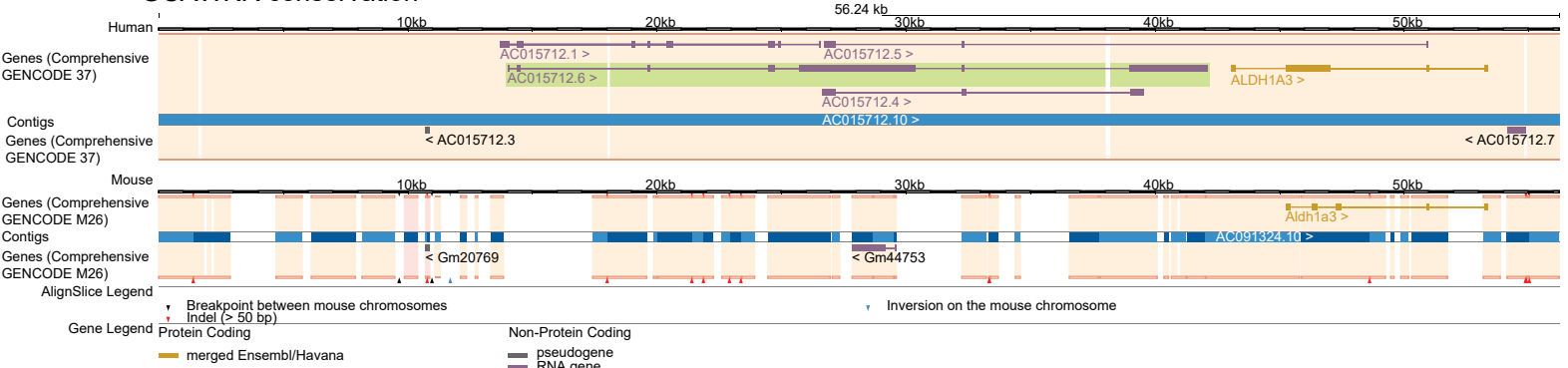


Figure S5. Further information on CHiLL1 and GCAWKR. Related to Figure 5.

(A) Tracks to support for CHiLL1 gene structure, and the lack of evidence for read through transcription between CHiLL1 and TNFRSF10B, from expressed sequence tags (ESTs).

(B) Searching for evidence of read through transcription between *CHiLL1* and *TNFRSF10B*. (Left) Agarose gel electrophoresis of RT-qPCR products using indicated primers with A549 cDNA. *CHiLL1* + *TNFRSF10B* indicates a PCR performed with the forward primer (F3 in the figure) in the lncRNA exon1 and reverse primer (R1) in the second exon of TNFRSF10B. (Right) Expression of RNA from CHiLL1 locus, and primers used.

(C) Rescue experiment. Cell viability after transfection with CHiLL1 transgene + *ChiLL1* ASO, and GCAWKR + GCAWKR ASO. n=3.

(D) GCAWKR genomic locus. The GCAWKR annotated TSS is supported by multiple evidence, including FANTOM CAGE, and it is shown the annotation of the full-length transcript with Capture Long-Read Sequencing¹²².

(E) Genomic elements in the CHiLL1 locus. GENCODE v36 exons were merged into a single transcript and queried against a set of genome-wide element annotations using ezTracks⁹⁴.

(F) Recurrently amplified genomic region that encompasses GCAWKR according to Pan-Cancer Analysis of Whole Genomes (PCAWG) Consortium. Ensembl 75 (hg19) annotation was used. For each gene, the longest transcript is shown. GCAWKR locus is highlighted. The copy number gain for the top 20 amplified samples in PCAWG is shown.

(G) Representative confocal microscopy images of RNA-FISH performed with *CHiLL1*, *GCAWKR* probe sets upon treatment with targeting ASOs or non-targeting ASO control in A549 cells. Selected lncRNA foci in the treated sample and in the control are arrowed.

(H) GCAWKR orthology between human annotation (GENCODE 37) and mouse (GENCODE M26).

Figure S6

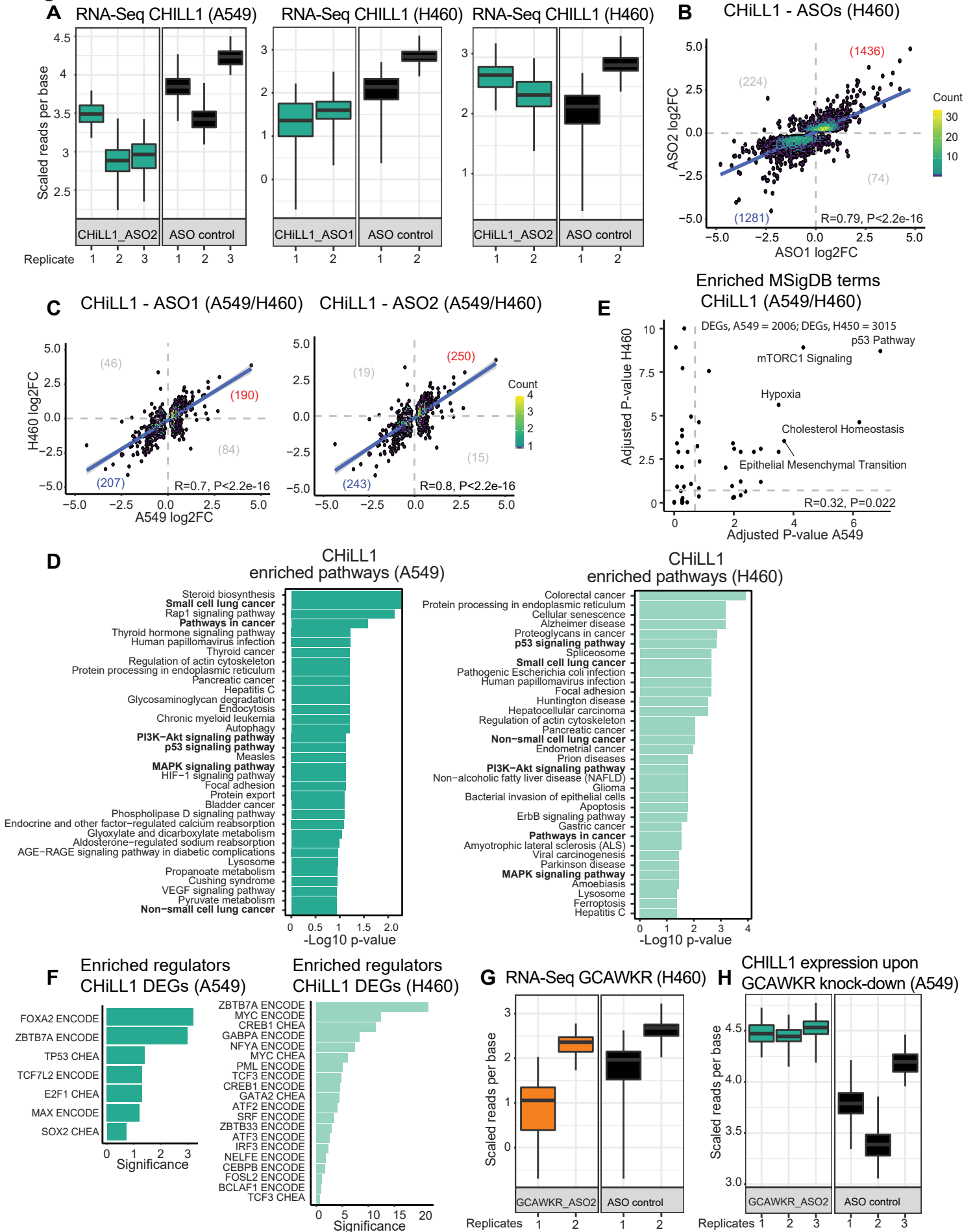


Figure S6. CHiLL1 and GCAWKR perturbation impacts disease transcriptome.

Related to Figure 6. (A) Response of *CHiLL1* expression to ASO transfection, as measured by RNA-seq. The y-axis represents the normalised expression (counts) per nucleotide and the boxplots show the variance of inference using bootstraps from Kallisto.

(B) Changes in gene expression (log₂ FC) with two different *CHiLL1* ASOs in H460. Numbers indicate the differentially expressed genes in each part of the scatter plot. Statistical significance: Pearson correlation.

(C) as for (B), but comparing effects of the same *CHiLL1* ASO in two cell backgrounds (left: ASO1; right: ASO2).

(D) KEGG pathways enriched for *CHiLL1* target genes, for A549 (left) and H460 (right) cells. Analysis was performed using common differentially expressed genes between the ASO1 and ASO2 knockdown.

(E) Gene ontology analysis performed using the Molecular Signatures Database (MSigDB). Shown are enriched terms between A549 and H460 cells by using the set of common differentially-expressed genes of ASO1&2 for *CHiLL1*. Statistical significance: Pearson correlation.

(F) Binding sites^{115,123} enriched in the intersection of differentially expressed genes (DEGs) from ASO1&2 knockdown of *CHiLL1*.

(G) Expression of *GCAWKR* in H460 in response to *GCAWKR* ASOs. The y-axis represents the normalised expression (counts) per nucleotide and the boxplots show the variance of inference using the bootstraps of Kallisto.

(H) Expression of *CHiLL1* (RNA-seq) upon ASO knockdown of *GCAWKR*. The y-axis represents the normalised expression (counts) per nucleotide and the boxplots show the variance of inference using the bootstraps of Kallisto.

Data S4. Related to Star Methods.

CRISPETA runs. Related to Methods (Library design).

	Run1	Run2	Run3		Run4	Run5	Run6	Run7	Run8
-eu	0								
-ed	0								
-du	1000		1200						
-dd	1000		1200						
-si	0.2								0
-t	0,0,0,x, x	0,0,1,x, x			0,0,5,x, x	0,1,5,x, x	0,x,x,x, x	1,x,x,x, x	1,x,x,x, x

PCR reaction ssDNA to dsDNA. Related to Methods (Library cloning).

Component	Amount per reaction
5x Buffer	20 ul
dNTPs 10 mM	3 ul
Forward oligo 100uM	2 ul
Reverse oligo 100 uM	2 ul
Template DNA 10ng/ul	2 ul
Phusion Polymerase High Fidelity 2U/ul	2ul
UltraPure water	Up to 100 ul

pDECKO_backbone plasmid digestion. Related to Methods (Library cloning).

Component	Amount per reaction
pDECKO plasmid	5 ug
Tango 10x Buffer	5 ul
DTT (20mM)	2.5 ul
Esp3I (BsmBI)	1 ul
UltraPure H2O	Up to 50 ul

Long oligos to generate pDECKO constant part (HPLC purification). Related to Methods (Library cloning).

Oligos	Sequences (5'-3')
Forward_1 (F1) 125 bp	TAGAAATAGCAAGTTAAAATAAGGCTAGTCCGTTATCAACTTGAA AAAGTGGCACCGAGTCGGTGTCTTTTTTGAACGCTGACGTCATCA ACCCGCTCCAAGGAATCGCGGGGCCAGTGTCCTACTAG
Forward_2 (F2) 148 bp	GCGGGAACACCCAGCGCGCGTGCGCCCTGGCAGGAAGATGGCT GTGAGGGACAGGGGAGTGGCGCCCTGCAATATTTGCATGTCGCT ATGTGTTCTGGGAAATCACCATAAACGTGAAATGTCTTTGGATTT GGGAGTCTTATAAGTT
Reverse_1 (R1) 146 bp	GCGCACGCGCGCTGGGTGTTCCCGCCTAGTGACACTGGGCCCCG CGATTCCTTGGAGCGGGTTGATGACGTCAGCGTTCAAAAAAGCA CCGACTCGGTGCCACTTTTTCAAGTTGATAACGGACTAGCCTTAT TTAACTTGCTATT
Reverse_2 (R2) 127 bp	ACAGAACTTATAAGACTCCCAAATCCAAAGACATTTACGTTTATG GTGATTTCCCAGAACACATAGCGACATGCAAATATTGCAGGGCG CCACTCCCCTGTCCCTCACAGCCATCTTCTGCCAGG

Colony PCR primers. Related to Methods (Library cloning).

Primer	Sequences (5'-3')
Oligo_colony_Fw	GTACAAAATACGTGACGTAG
Oligo_colony_Rv	ATGTCTACTATTCTTTCCCC

Colony PCR reaction. Related to Methods (Library cloning).

95°C 2', 95°C 30", 60°C 40", 72°C 2' for 29 cycles, 72°C 2', 4°C forever	
Component	Amount per reaction
5x Buffer	10 ul
dNTPs 10 mM	1 ul
Oligo_colony_Fw 10 uM	1 ul
Oligo_colony_Rv 10 uM	1 ul
Template colony	2 ul
Go Taq G2 polimerase (Promega)	0.25 ul
Nuclease-free water	Up to 50 ul

Primers for the genomic deletion. Related to Methods (PCR amplification from genomic DNA).

gDNA_Candidate_331_For	TTGCAACCCCCAAACAGACT
gDNA_Candidate_331_Rev	GGGGCACCATTTTGGACCTA
gDNA_Candidate_205_For	AGCCTGTCACAAACTGATTCTTA
gDNA_Candidate_205_Rev	TTGTTGACCCGGAAACGGAT

Composition of lung cancer organoids medium. Related to Methods (Patient-derived xenograft organoids)

Substances	Final Conc.	Supplier	Catalogue number
DMEM:F-12 HAM medium	-	Sigma-Aldrich	D6421
EGF	50 ng/mL	Thermo Fisher Scientific	PHG6045
FGF	20 ng/mL	Thermo Fisher Scientific	PHG6015
L-Glutamine	2 mM	Sigma-Aldrich	G7513-100mL
OmniPur HEPES	10 mM	Sigma-Aldrich	5320-500GM
Penicillin/Streptomycin	100 U/mL	Sigma-Aldrich	P3032-10MU S6501-25G
N-2 supplement	1x	Thermo Fisher Scientific	17502-048
B-27 supplement	1x	Thermo Fisher Scientific	17504-044
Noggin	100 ng/mL	Prospect	CYT-475
ROCK-inhibitor (Y-27632)	10 μ M	Stemcell	72304

Primers RT-qPCR. Related to Methods (RNA isolation and RT-qPCR).

HPRT1_For	ATGACCAGTCAACAGGGGACAT
HPRT1_Rev	CAACACTTCGTGGGGTCCTTTTCA
Candidate_331_For	CAGGGAGCAGGGACTATCAA
Candidate_331_Rev	TGGTCTTCCAACATGGGCTTG
Candidate_205_For (LINC00115)	CCTAGTTCTCTTCACCGTCCG
Candidate_205_Rev (LINC00115)	AAGACAAGCCACATGCCGAA
Candidate_205_For (LINC01128)	AGAGGTTAAAAGTCACAAGGGTGT
Candidate_205_Rev (LINC01128)	GCCTTGACAGCAAGCCTAGA
Candidate_42_For (ENST00000520840.2)	GCAGTGACCCAGAATGAGGAAG
Candidate_42_Rev (ENST00000520840.2)	TACTGAAATTGGAGGCTGTGGA
Candidate_42_For (ENST00000523806.1)	GCAGTGACCCAGAATGAGGT
Candidate_42_Rev (ENST00000523806.1)	GCTCTAGCTTCCAGGTTGGG
Candidate_240_For	CTCACGGCAGCTATGAGACT
Candidate_240_Rev	GCTCCAAGATGCCACTCACA
Candidate_448_For	GAAACCTCCTCGACACTCCG
Candidate_448_Rev	AGTCTTCGAACAGGCTGCAA
Candidate_215_For	GCAATTGTACCTGAGGACCCA
Candidate_215_Rev	TGGCATATGGTGGATGTTCCC
Candidate_489_For	AAGCGCTCATTCAAGGTTGC
Candidate_489_Rev	GGTTCAGTCTGGGCCCTTTT
Candidate_408_For	GCGATGGAAGAAGTTTCGCC
Candidate_408_Rev	GGAACTCAGGTAACAGGAATTTAC
Candidate_316_For	GACCAACTCCGTTTCCCGAT

Candidate_316_Rev	TCAAGGGCCCAGCCTTATTC
Candidate_635_For	AATTCCACCCACGCACCTAT
Candidate_635_Rev	GAGCCACCGTTAATTCAGCC
Candidate_507_For	TCCTTGCTAACCACACGGAC
Candidate_507_Rev	ATGTGGGTCCCAGTATCCGA
Candidate_509_For	TTGGCACACTCAGATGCGAT
Candidate_509_Rev	AAACAGTCCCGCTTGGGAT
GAPDH_For	GCACCGTCAAGGCTGAGAAC
GAPDH_Rev	TGGTGAAGACGCCAGTGGGA
MALAT1_For	GATTGAGGCGTTTTCCAAGA
MALAT1_Rev	ACTTTCTCCCCCAACTGCTT

pgRNA guides for CRISPR deletion. Related to Methods (DECKO and lentiviral production).

Gene Target	Candidate	sgRNA1	sgRNA2
DNMBP-AS1	331_1	GTAATATTCAGGAAG GGCAA	GCTCTAAACAAAACCTAGAGA
DNMBP-AS1	331_2	GCTGGTTTTAGGGAG ATCAG	GCTCTAAACAAAACCTAGAGA
DNMBP-AS1	331_3	TGATCTCCCTGAAACC AGCT	GCTCTAAACAAAACCTAGAGA
DNMBP-AS1	331_4	ACACTTTGATTACAGT TGGG	GCTCTAAACAAAACCTAGAGA
DNMBP-AS1	331_5	GTAATATTCAGGAAG GGCAA	GAAAACCTATGAAAACCTAGAGA
DNMBP-AS1	331_6	GCTGGTTTTAGGGAG ATCAG	GAAAACCTATGAAAACCTAGAGA
DNMBP-AS1	331_7	GTAATATTCAGGAAG GGCAA	GCTAAAGGTTTCAGGGTT GGA

DNMBP-AS1	331_9	GTAATATTCAGGAAG GGCAA	GCACTTGCTAATAACATA CA
DNMBP-AS1	331_10	GCTGGTTTCAGGGAG ATCAG	GCTAAAGGTTTCAGGGTT GGA
LINC01128; LINC00115	205_2	CCTCCTCTATATGAAC TCCA	GCGGACGGTGAAGAGAA CTA
LINC01128; LINC00115	205_2	CCTCCTCTATATGAAC TCCA	GCAAACCCCACGCTTCG GGG
CHiLL1	42_2	GAGACATTAGTGGAC ATAGA	GGATGGGTGAGCCAACC TCA
CHiLL1	42_8	ATAGTAAGTCAAAGTA ATGG	GAGCAAATTCTCCCTTG GGAA
CHiLL1	42_10	ATTGTTTGCCCAATGC AGAG	GCTTCTGCTGCCTTTCC CAA
GCAWKR	240_6	GTACCACAGACACTA CAGTT	TCTGAGCACAGTGATTC CGG
GCAWKR	240_8	TGCACTTTCCCAGATA ACAC	GCTAGTAAACCCACAGC GGAC
GCAWKR	240_9	TCGAATGTTCCATTC CTCA	GCTAGTAAACCCACAGC GGAC
GCAWKR	240_10	TTTGTTAGTTCCCTTT TAGC	GCTAGTAAACCCACAGC GGAC
lncRNA not annotated in GENCODE	509_3	ACAGGCGCTTTTCTGT TCAG	GTTACTTCTACGCGTTCA CGT
AASV1	targeting control	ACTCTTTAAGGAAAGA AGGA	CCTCAGTCTGAAGAGCA GAGC