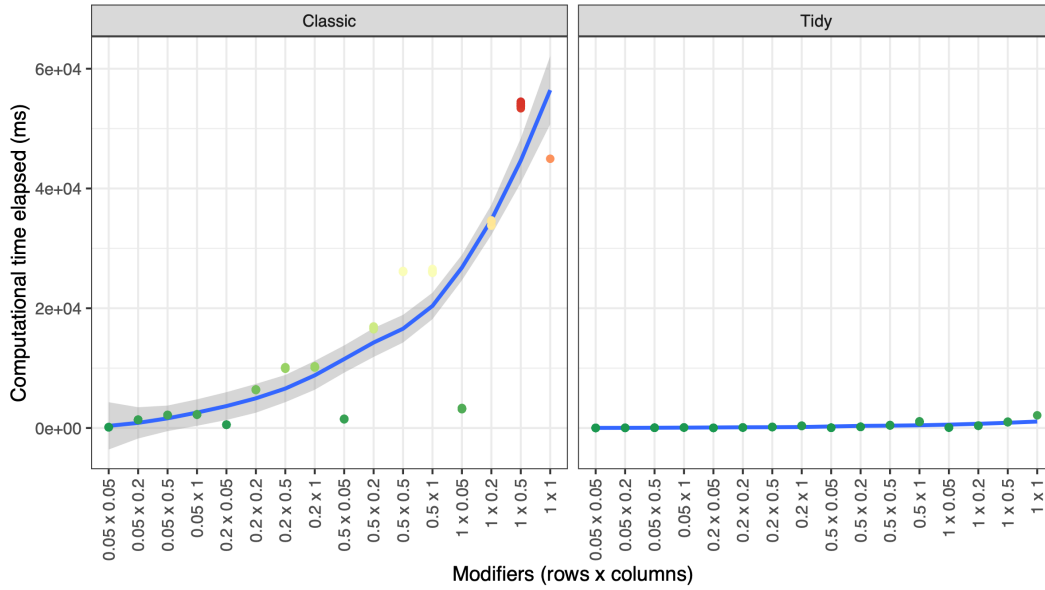


Supplementary Figure 2

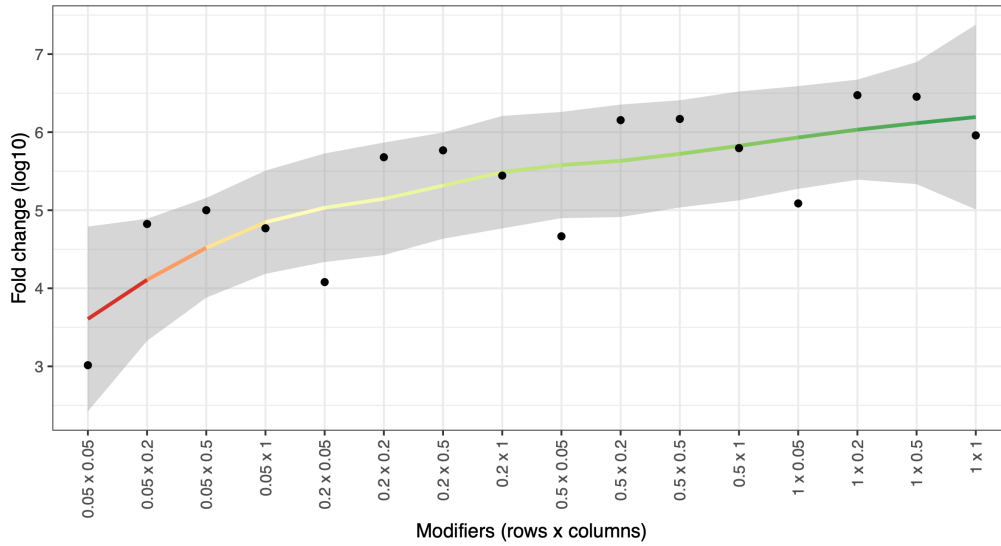
A Bootstrap simulation benchmarks

Comparison of average time elapsed between classical and tidy approaches

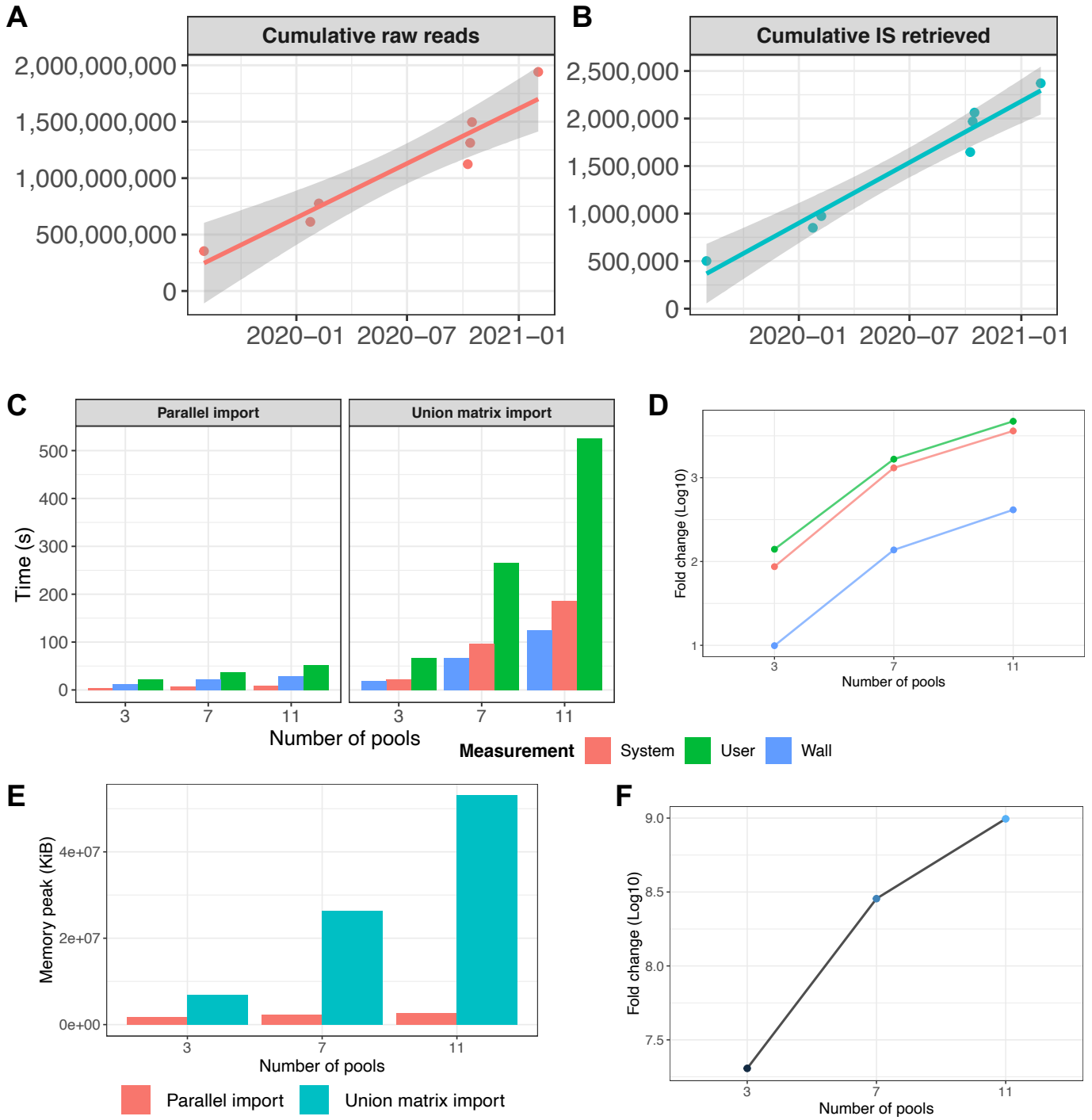


B Bootstrap simulation: fold change

Fold change between tidy and classical approaches, calculated as $c(t-t)/t$, where t is the average time for tidy and c is the average time for classical



Supplementary Figure 3



Supplementary Figure 4

A

ISAnalytics - Matrix import report 2022-03-08 Files found Import summary Annotation issues Reproducibility [Website](#) [GitHub](#)

Files counts by quantification Files found per project/pool About

Show 10 entries Search:

ProjectID	concatenatePoolIDSeqRun	Quantification type	Found
All	All	All	All
MPSIH	POOL01-1	fragmentEstimate	1 ✓
MPSIH	POOL01-1	seqCount	1 ✓
MPSIH	POOL02-1	fragmentEstimate	1 ✓
MPSIH	POOL02-1	seqCount	1 ✓
MPSIH	POOL03-1	fragmentEstimate	1 ✓
MPSIH	POOL03-1	seqCount	1 ✓
MPSIH	POOL04-1	fragmentEstimate	1 ✓
MPSIH	POOL04-1	seqCount	1 ✓

Showing 1 to 10 of 22 entries

Previous 1 2 3 Next

B

ISAnalytics - Matrix import report 2022-03-08 Files found Import summary Annotation issues Reproducibility [Website](#) [GitHub](#)

Summary of files imported About

Show 10 entries Search:

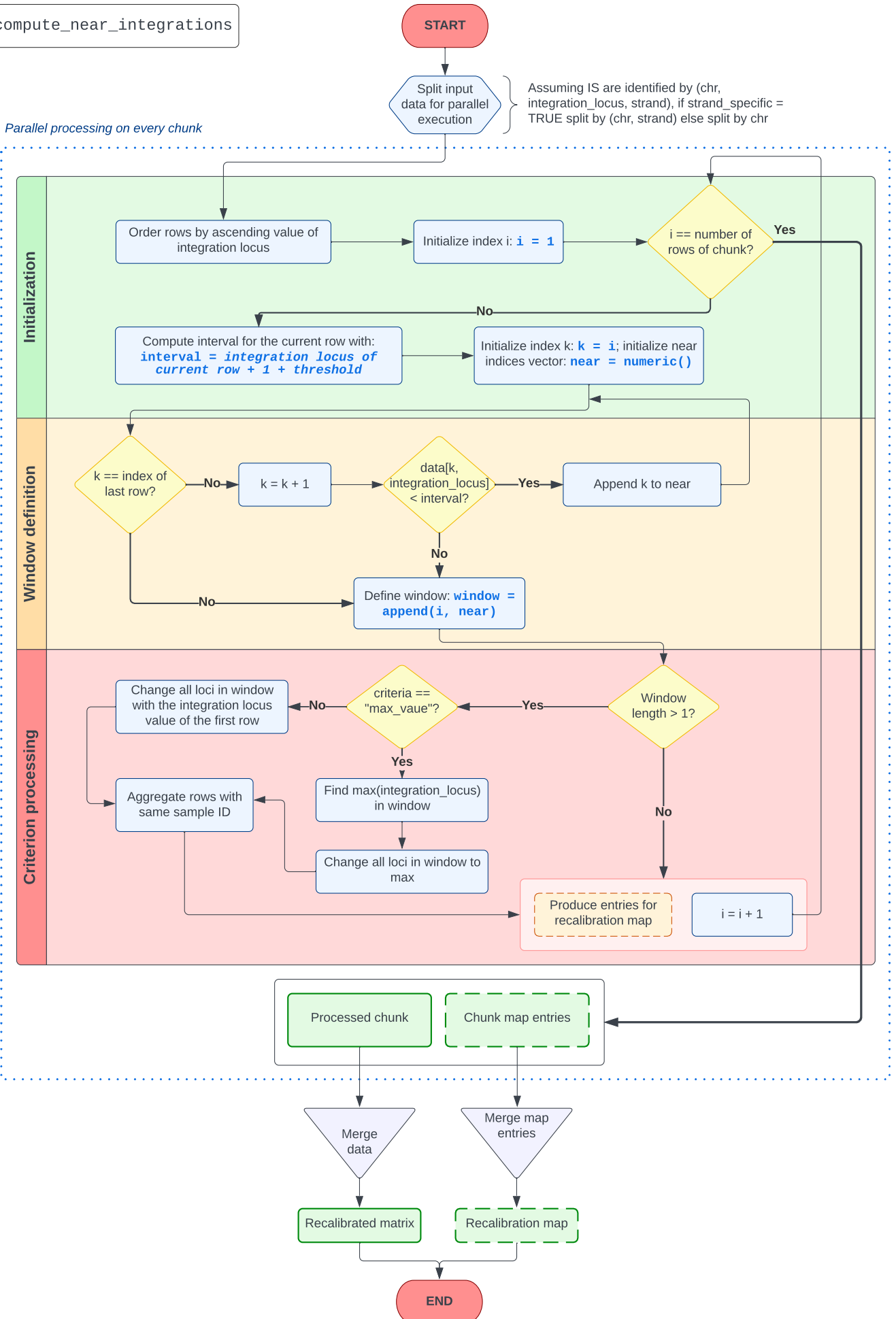
ProjectID	concatenatePoolIDSeqRun	Quantification type	Files chosen	Imported
All	All	All	All	All
MPSIH	POOL01-1	fragmentEstimate	./MPSIH/quantification/POOL01-1/MPSIH_POOL01-1_fragmentEstimate_matrix.no0.annotated.tsv.gz	TRUE
MPSIH	POOL02-1	fragmentEstimate	./MPSIH/quantification/POOL02-1/MPSIH_POOL02-1_fragmentEstimate_matrix.no0.annotated.tsv.gz	TRUE
MPSIH	POOL03-1	fragmentEstimate	./MPSIH/quantification/POOL03-1/MPSIH_POOL03-1_fragmentEstimate_matrix.no0.annotated.tsv.gz	TRUE
MPSIH	POOL04-1	fragmentEstimate	./MPSIH/quantification/POOL04-1/MPSIH_POOL04-1_fragmentEstimate_matrix.no0.annotated.tsv.gz	TRUE
MPSIH	POOL05-1	fragmentEstimate	./MPSIH/quantification/POOL05-1/MPSIH_POOL05-1_fragmentEstimate_matrix.no0.annotated.tsv.gz	TRUE

Showing 1 to 10 of 22 entries

Previous 1 2 3 Next

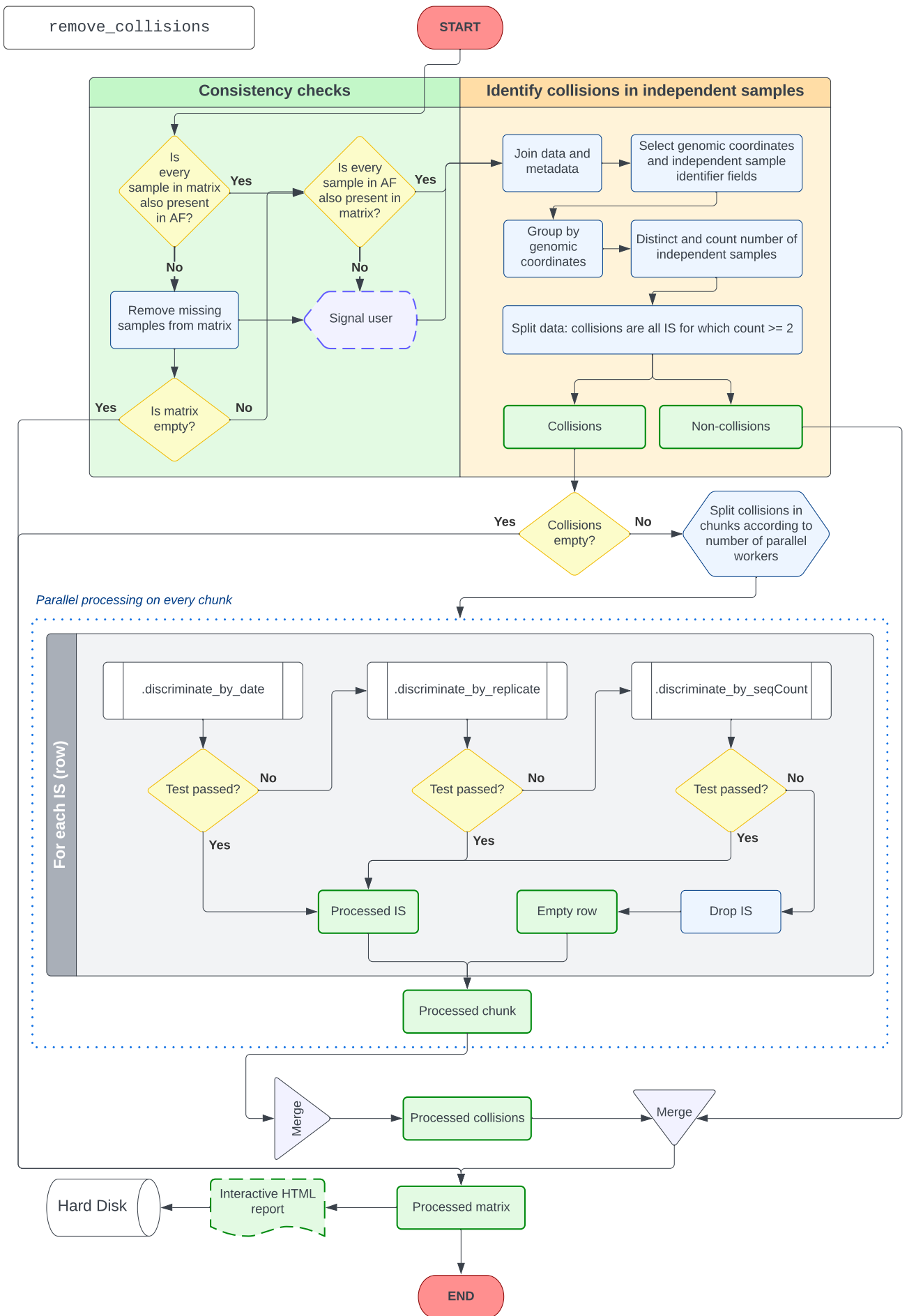
Supplementary Figure 5

compute_near_integrations



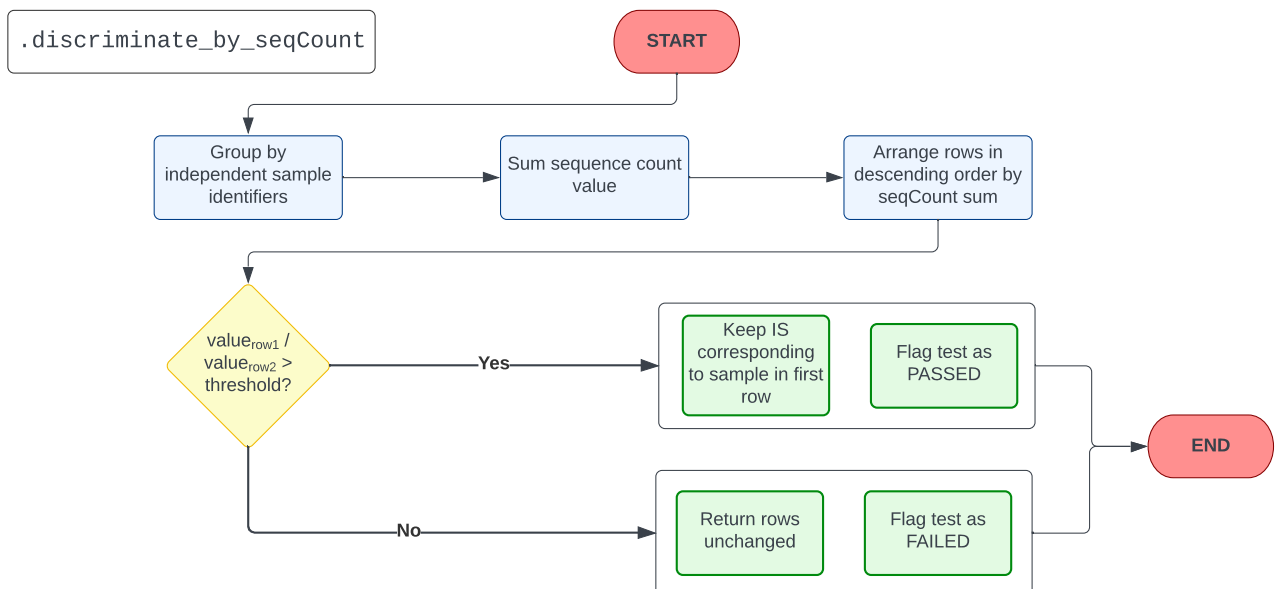
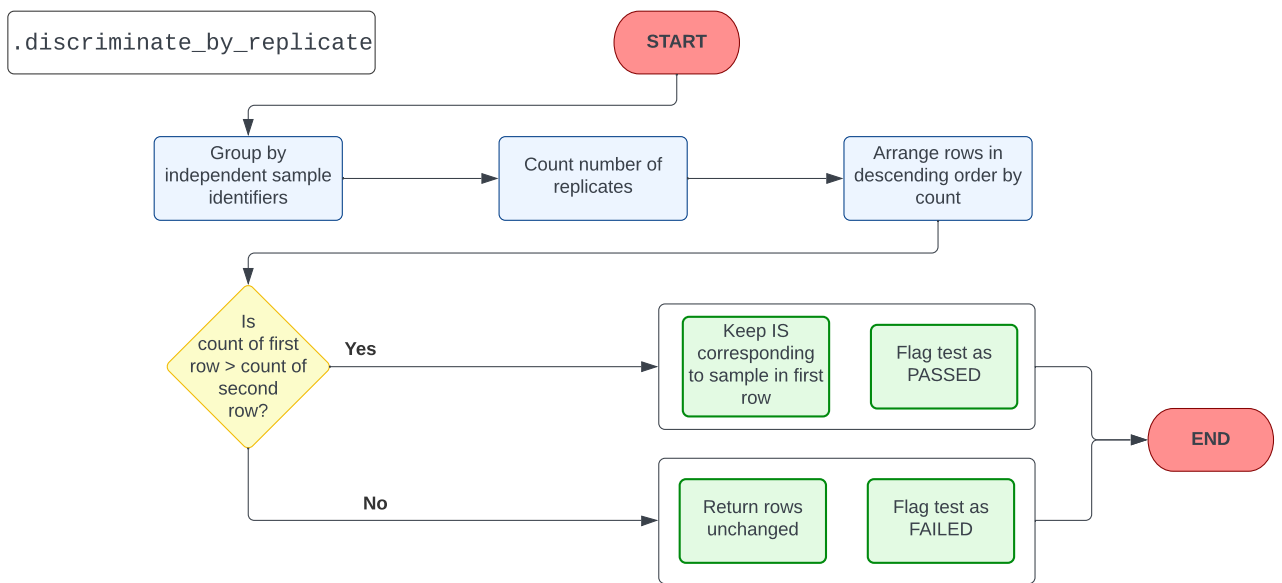
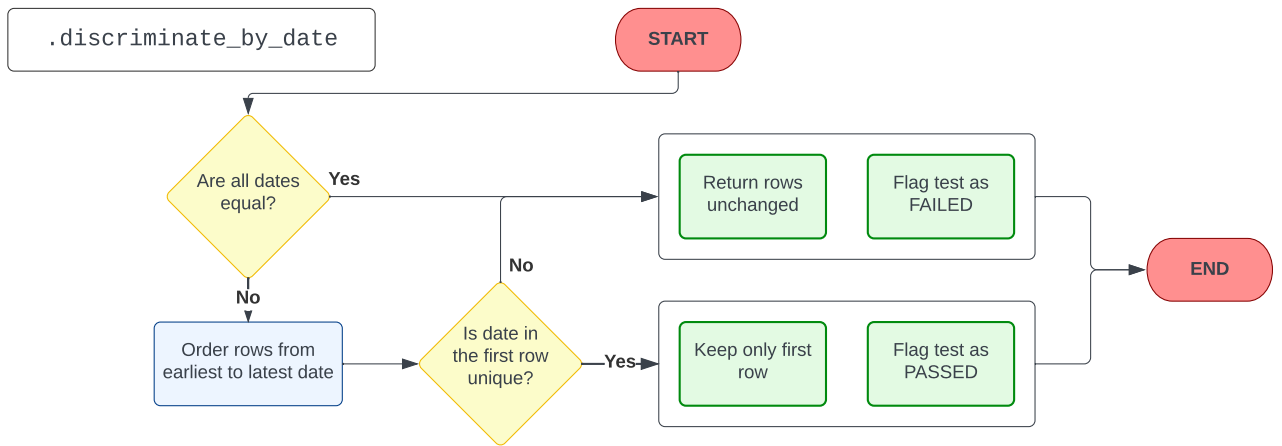
Supplementary Figure 6

A

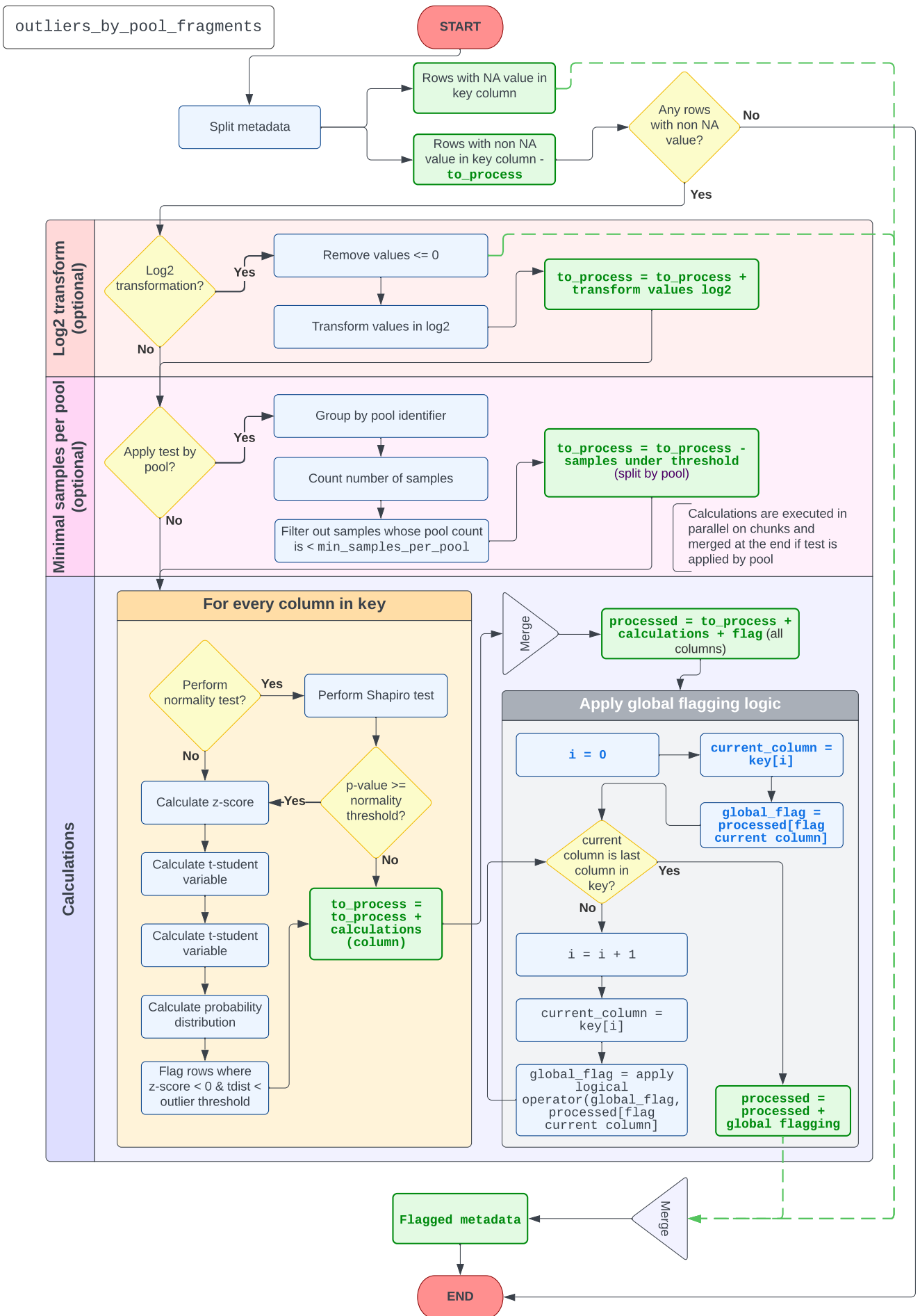


Supplementary Figure 6 (continued from the previous page)

B



Supplementary Figure 7



Supplementary Figure 8

A

NGSdataExplorer Home Explore

Load data

From R environment

From file

Import a dataset from an environment

Select a data.frame:

association_file

Select an environment in which to search:

Global Environment

✓ **Data ready to be imported!** data has 53 obs. of 83 variables.
 [click to see data](#)

➔ Import data

B

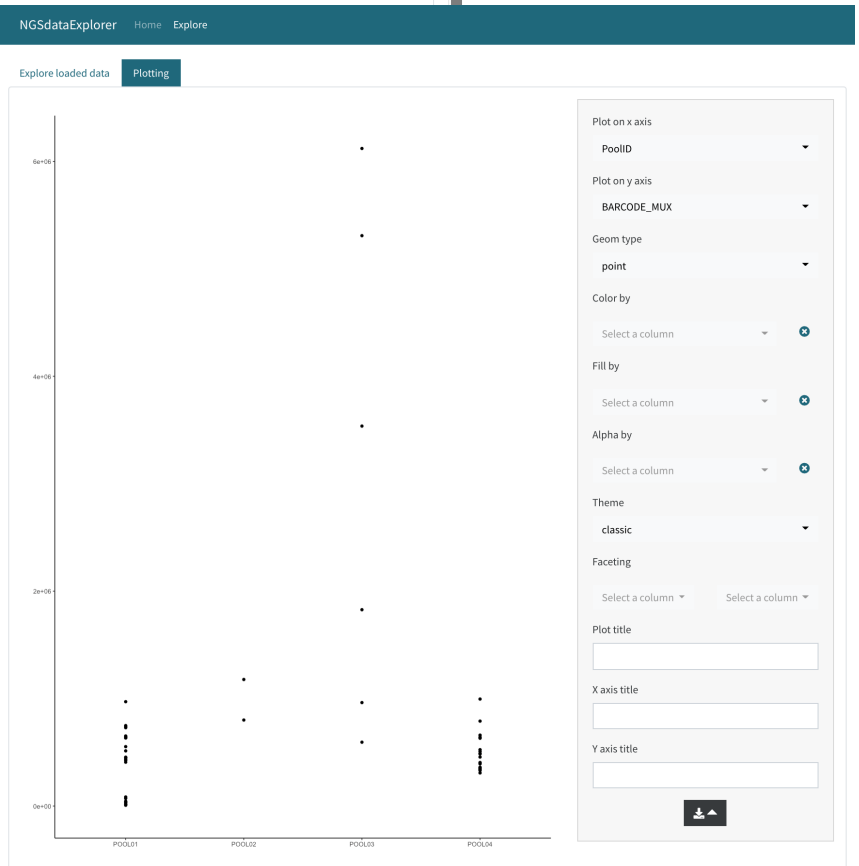
NGSdataExplorer Home Explore

Explore loaded data Plotting

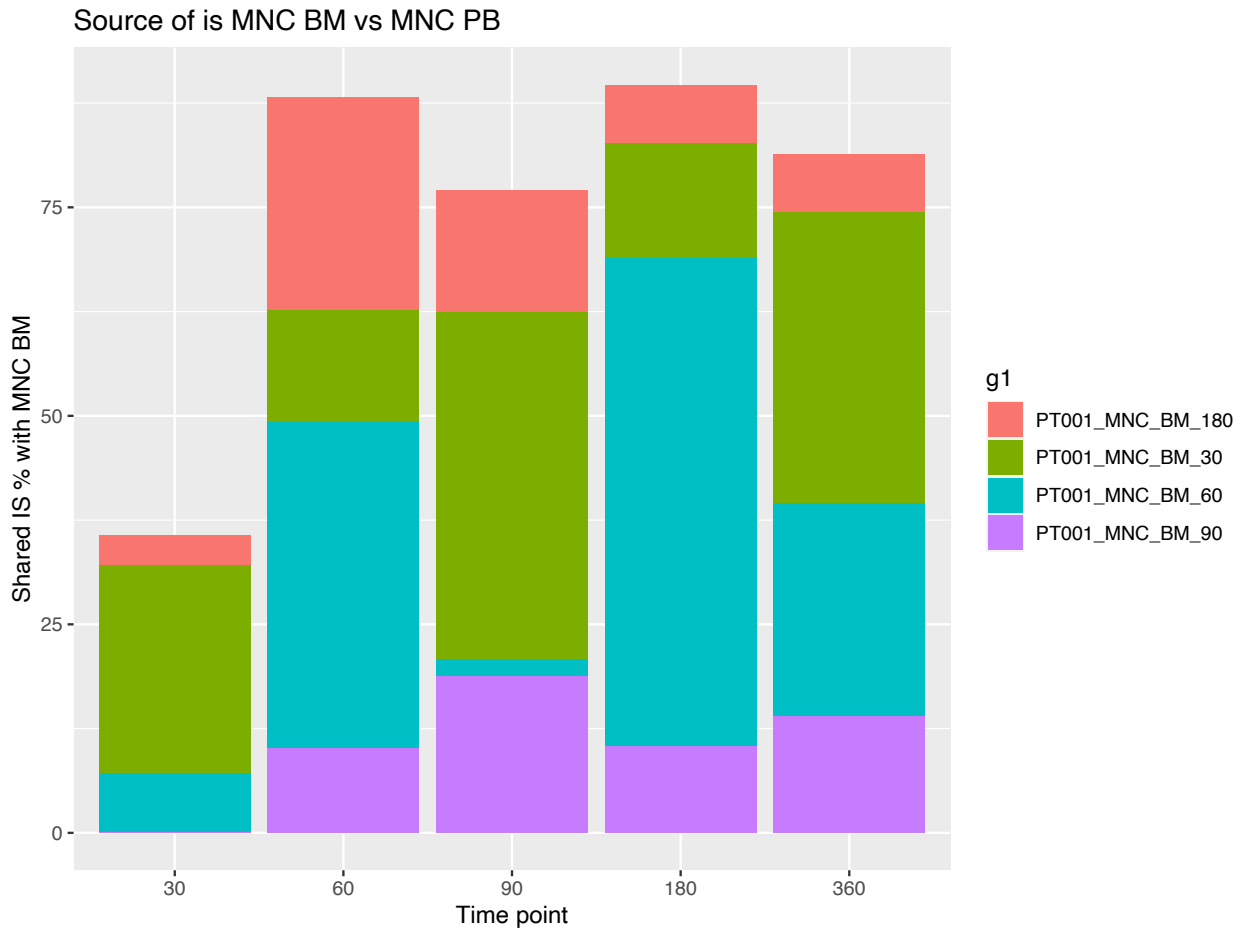
Show entries Search:

	ProjectID	FUSIONID	PoolID	TagSequence	SubjectID	VectorType	VectorID	Experim
	All	All	/	All	All	All	All	All
1	PJ01	ET#382.46	POOL01	LTR75LC38	PT001	lenti	GLOBE	
2	PJ01	ET#381.40	POOL01	LTR53LC32	PT001	lenti	GLOBE	
3	PJ01	ET#381.9	POOL01	LTR83LC66	PT001	lenti	GLOBE	
4	PJ01	ET#381.71	POOL01	LTR27LC94				
5	PJ01	ET#381.2	POOL01	LTR69LC52				
6	PJ01	ET#382.28	POOL01	LTR37LC2				
7	PJ01	ET#382.2	POOL01	LTR77LC46				

C



Supplementary Figure 9



Supplementary Figure 10

