

Representative film developed for SERCA2 and GAPDH antibody

Blot-1

Abbreviation used:

A: ACE-NKO

W and WT: Wild Type

Sham

MI: Myocardial Infarction

SDKP: Ac-SDKP + MI

883: ACE-NKO-Sham

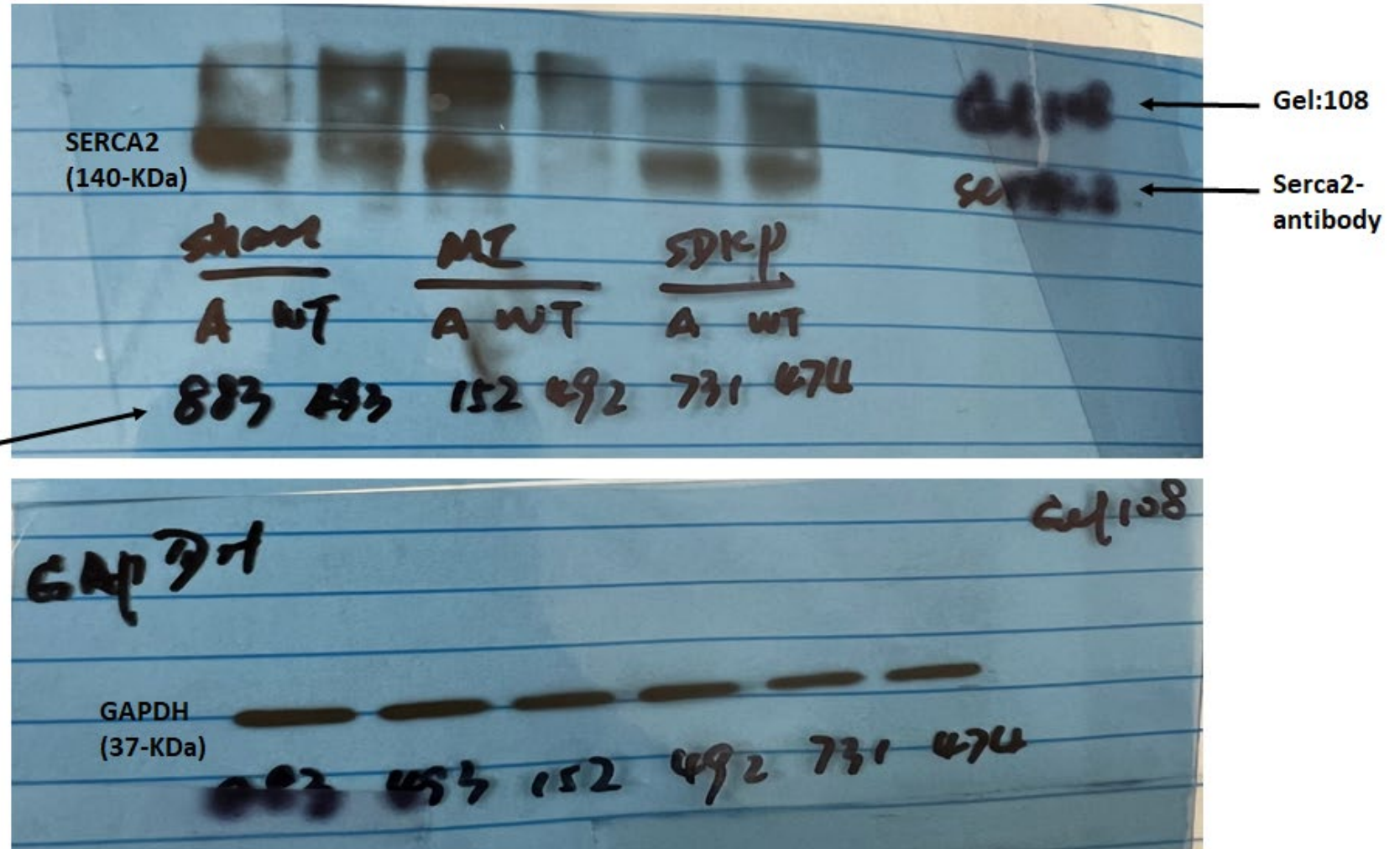
493: WT-Sham

152: ACE-NKO-MI

492: WT-MI

731: ACE-NKO- MI + Ac-SDKP

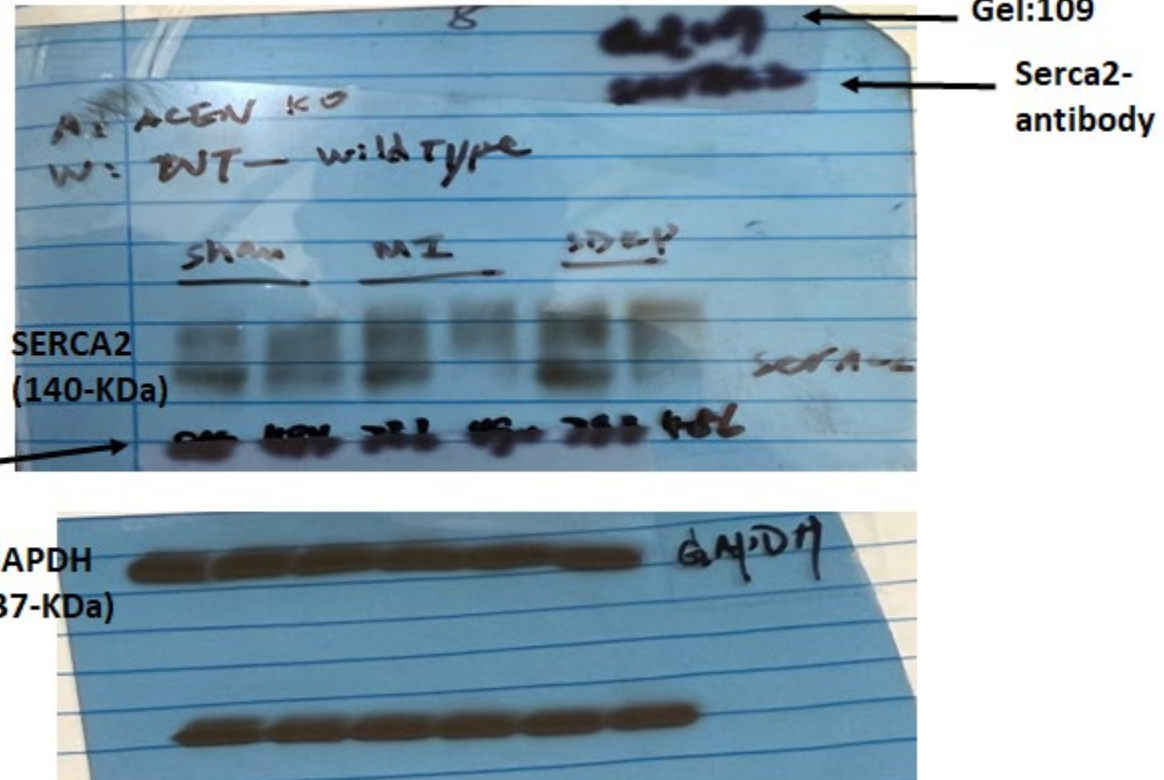
474: WT- MI + Ac-SDKP



Blot-2

Abbreviation used:
A: ACE-NKO
W and WT: Wild Type
Sham
MI: Myocardial Infarction
SDKP: Ac-SDKP + MI

885: ACE-NKO-Sham
494: WT-Sham
736: ACE-NKO-MI
490: WT-MI
793: ACE-NKO- MI + Ac-SDKP
486: WT- MI + Ac-SDKP



Blot-3

Abbreviation used:

A: ACE-NKO

W and WT: Wild Type

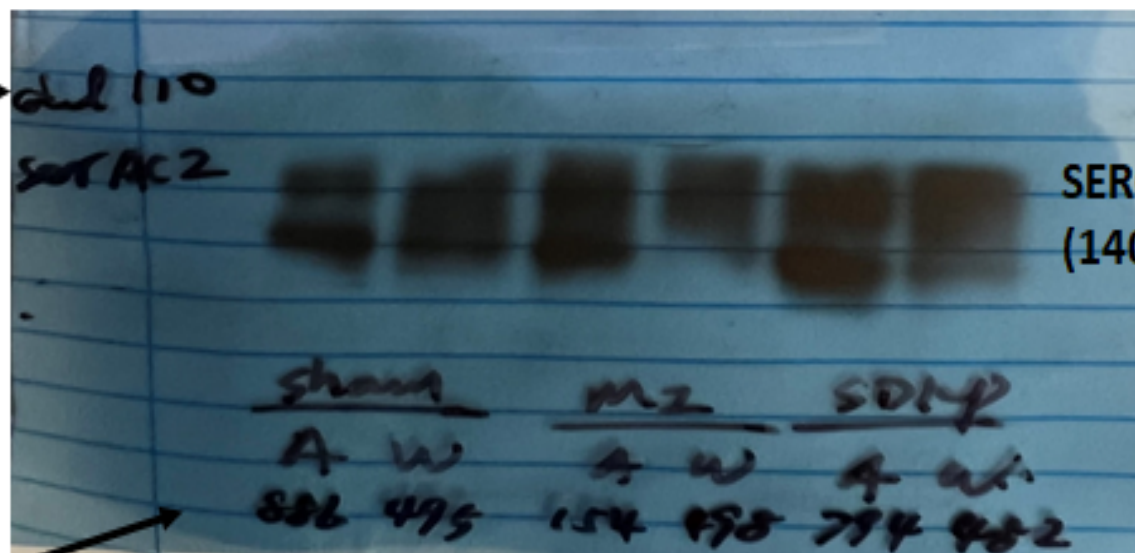
Sham

MI: Myocardial Infarction

SDKP: Ac-SDKP + MI

Gel:110 →

Serca2-
antibody →



SERCA2
(140-KDa)

886: ACE-NKO-Sham

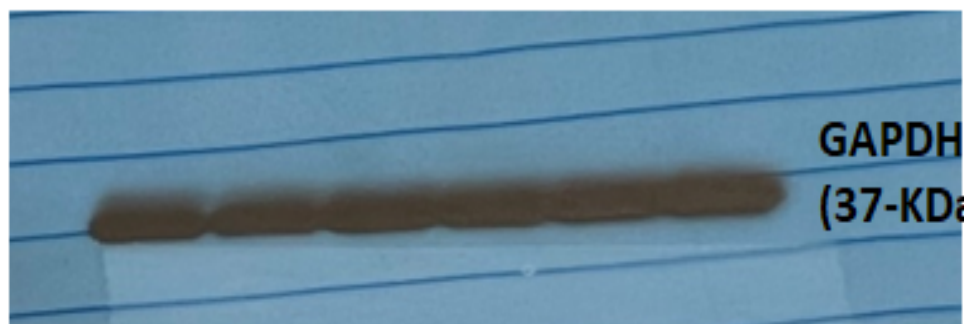
494: WT-Sham

154: ACE-NKO-MI

498: WT-MI

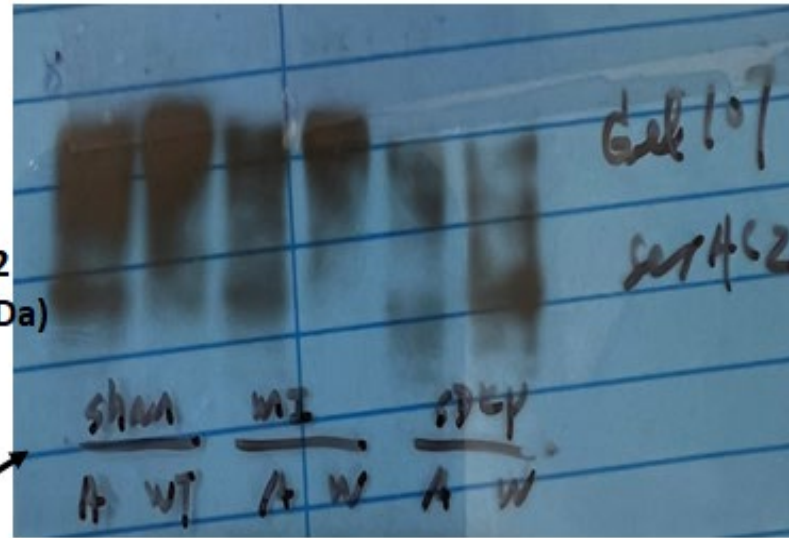
794: ACE-NKO- MI + Ac-SDKP

482: WT- MI + Ac-SDKP



GAPDH
(37-KDa)

Blot-4



Abbreviation used:

A: ACE-NKO

W and WT: Wild Type

Sham

MI: Myocardial Infarction

SDKP: Ac-SDKP + MI

849: ACE-NKO-Sham

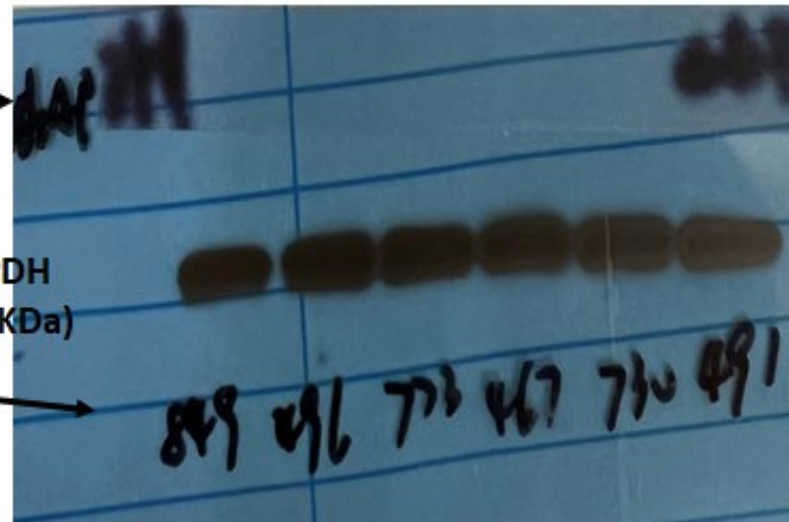
496: WT-Sham

773: ACE-NKO-MI

467: WT-MI

730: ACE-NKO- MI + Ac-SDKP

491: WT- MI + Ac-SDKP



Abbreviation used:

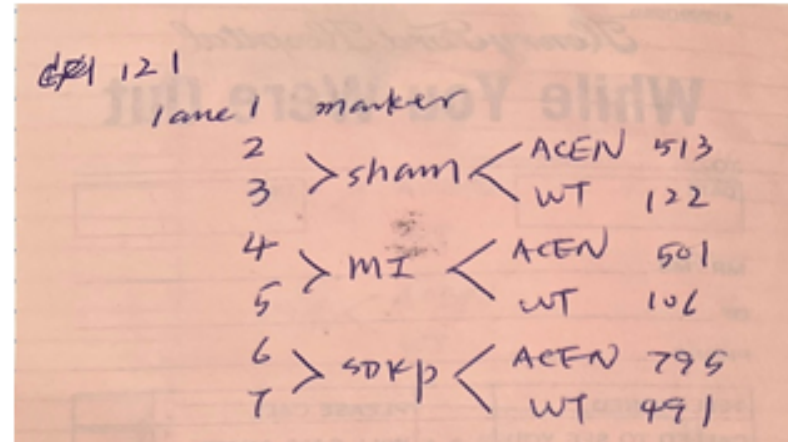
A: ACE-NKO

W and WT: Wild Type

Sham

MI: Myocardial Infarction

SDKP: Ac-SDKP + MI



513: ACE-NKO-Sham

122: WT-Sham

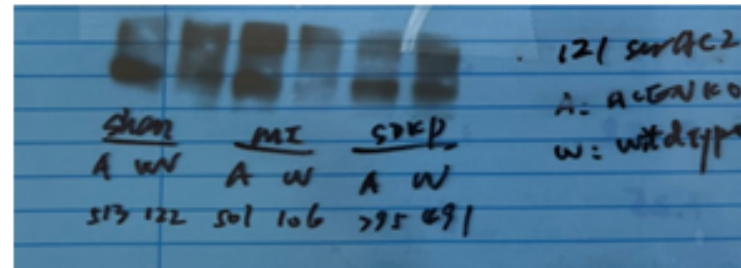
501: ACE-NKO-MI

106: WT-MI

795: ACE-NKO- MI + Ac-SDKP

491: WT- MI + Ac-SDKP

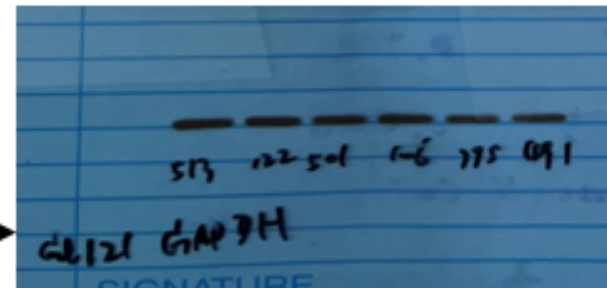
Blot-5



← Gel:121

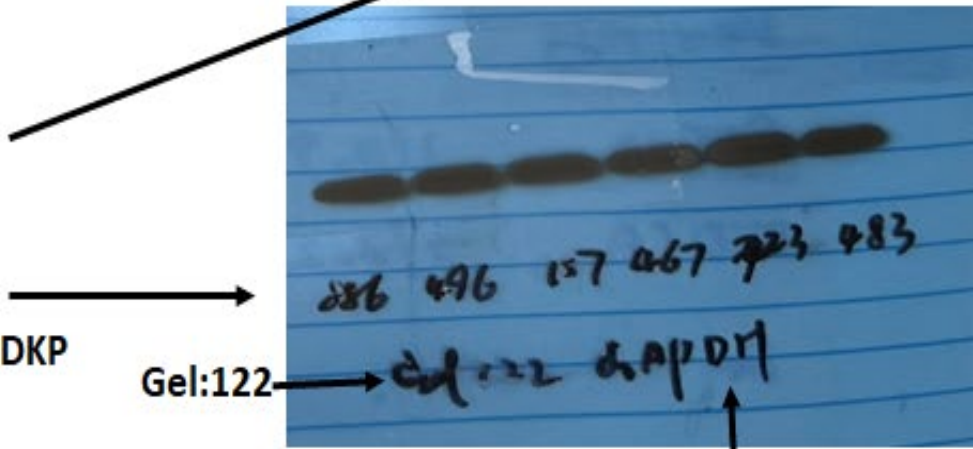
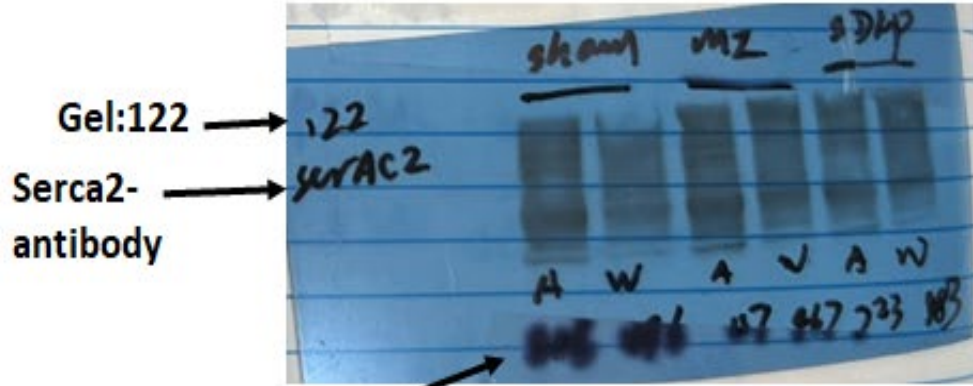
← Serca2-antibody

Gel:121 →



Blot-6

Abbreviation used:
 A: ACE-NKO
 W and WT: Wild Type
 Sham
 MI: Myocardial Infarction
 SDKP: Ac-SDKP + MI



886: ACE-NKO-Sham
 496: WT-Sham
 157: ACE-NKO-MI
 467: WT-MI
 723: ACE-NKO- MI + Ac-SDKP
 483: WT- MI + Ac-SDKP

Gel 122	lane	marker	value
2	sham	ACE-NKO	886
		WT	496
4	MI	ACE-NKO	157
		WT	467
6	SDKP	ACE-NKO	723
		WT	483

GAPDH

Representative film developed for Phospholamban (PLBN) and GAPDH antibody

Abbreviation used:

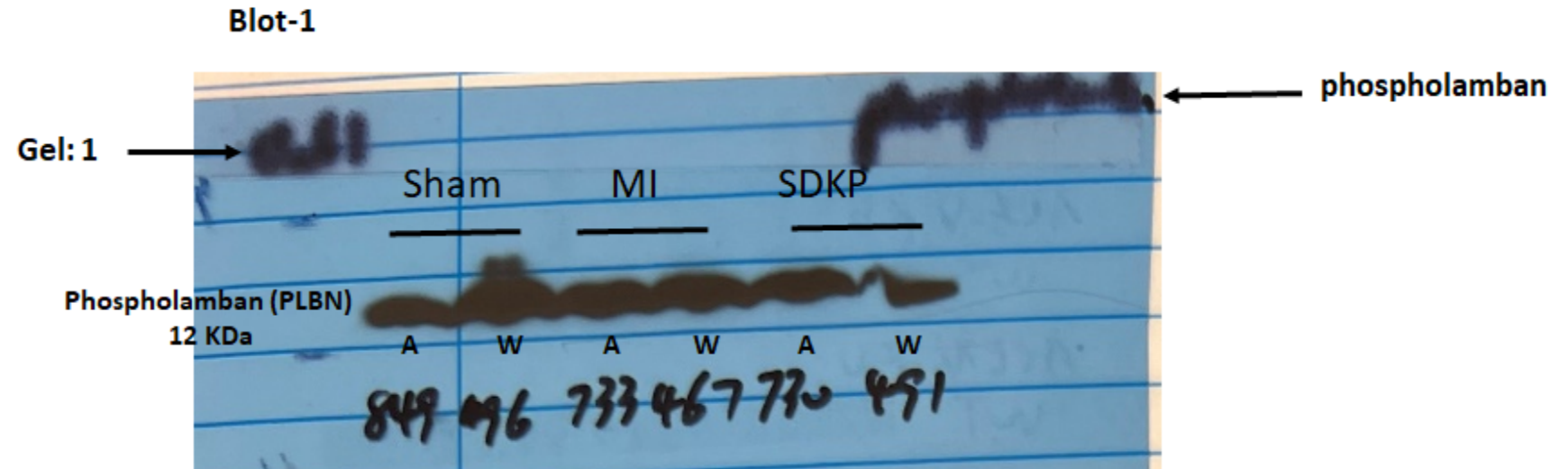
A: ACE-NKO

W and WT: Wild Type

Sham

MI: Myocardial Infarction

SDKP: Ac-SDKP + MI



849: ACE-NKO-Sham

496: WT-Sham

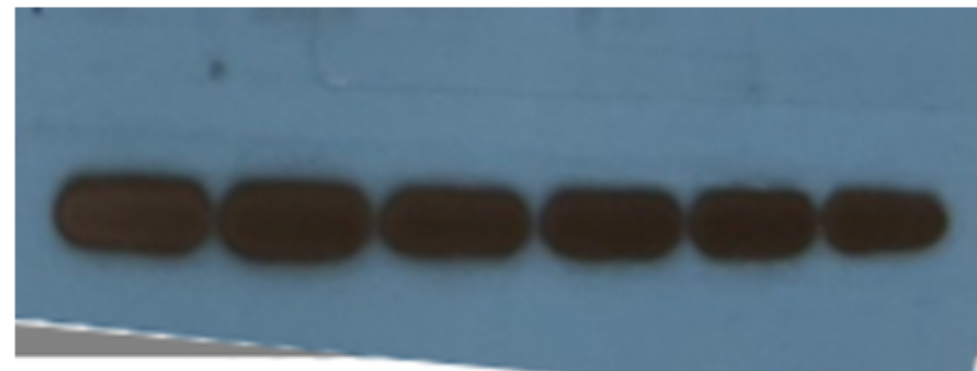
733 ACE-NKO-MI

467: WT-MI

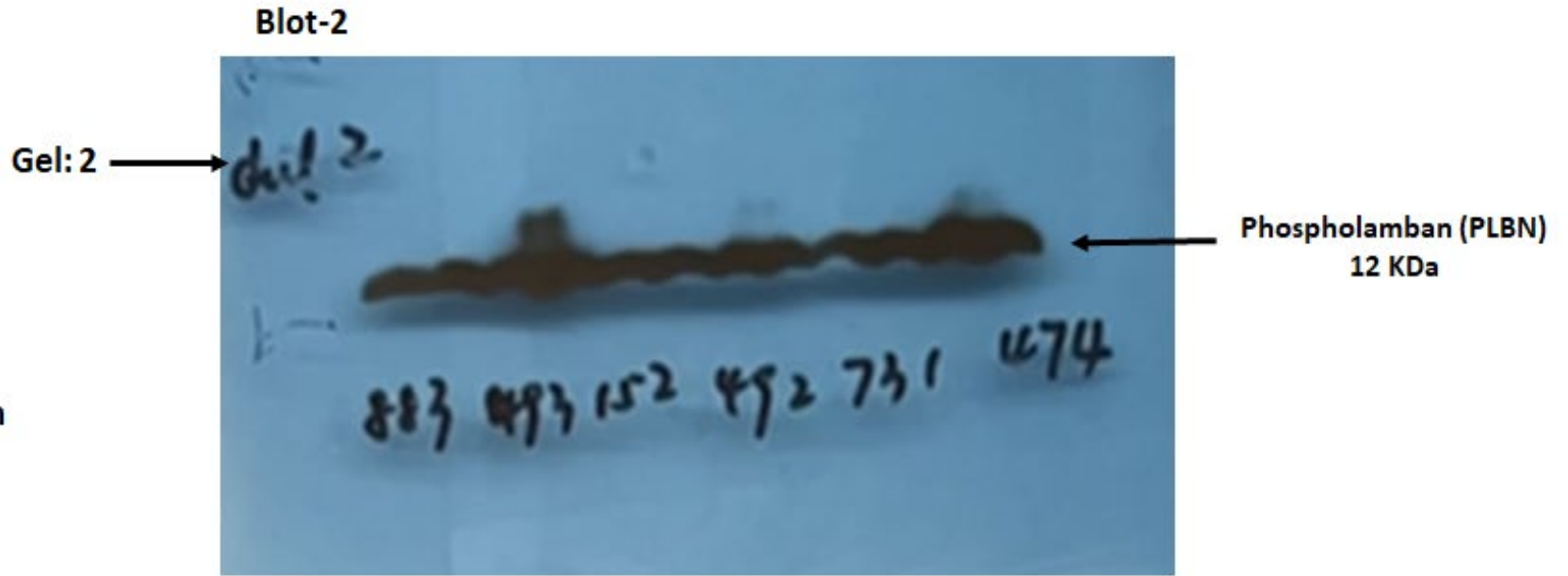
730: ACE-NKO- MI + Ac-SDKP

491: WT- MI + Ac-SDKP

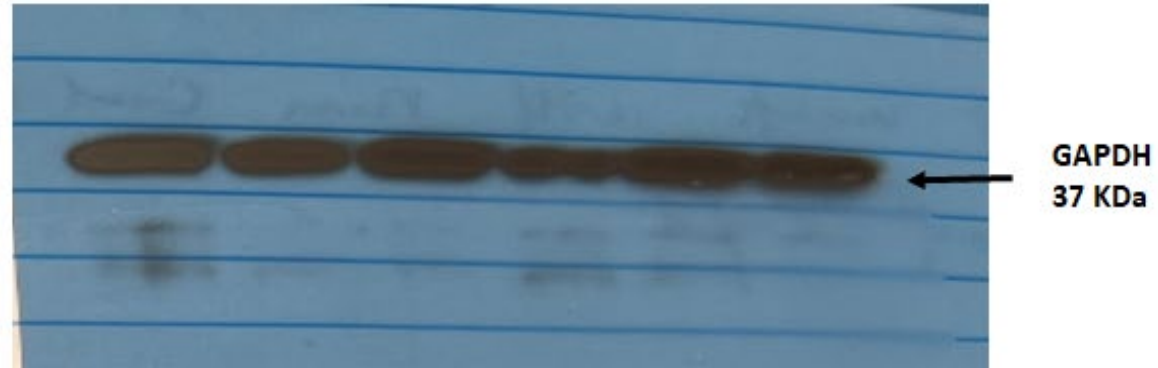
GAPDH
37 KDa



Abbreviation used:
A: ACE-NKO
W and WT: Wild Type
Sham
MI: Myocardial Infarction
SDKP: Ac-SDKP + MI



883: ACE-NKO-Sham
493: WT-Sham
152 ACE-NKO-MI
492: WT-MI
731: ACE-NKO- MI + Ac-SDKP
474: WT- MI + Ac-SDKP



Abbreviation used:

A: ACE-NKO

W and WT: Wild Type

Sham

MI: Myocardial Infarction

SDKP: Ac-SDKP + MI

885: ACE-NKO-Sham

494: WT-Sham

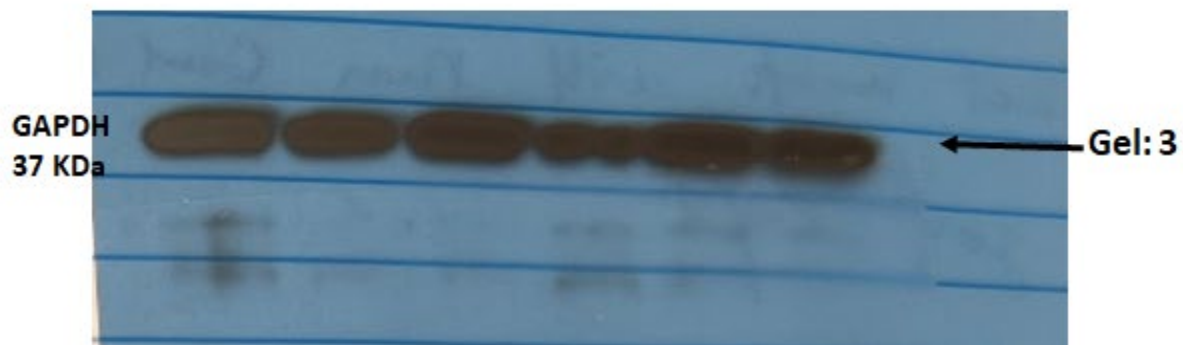
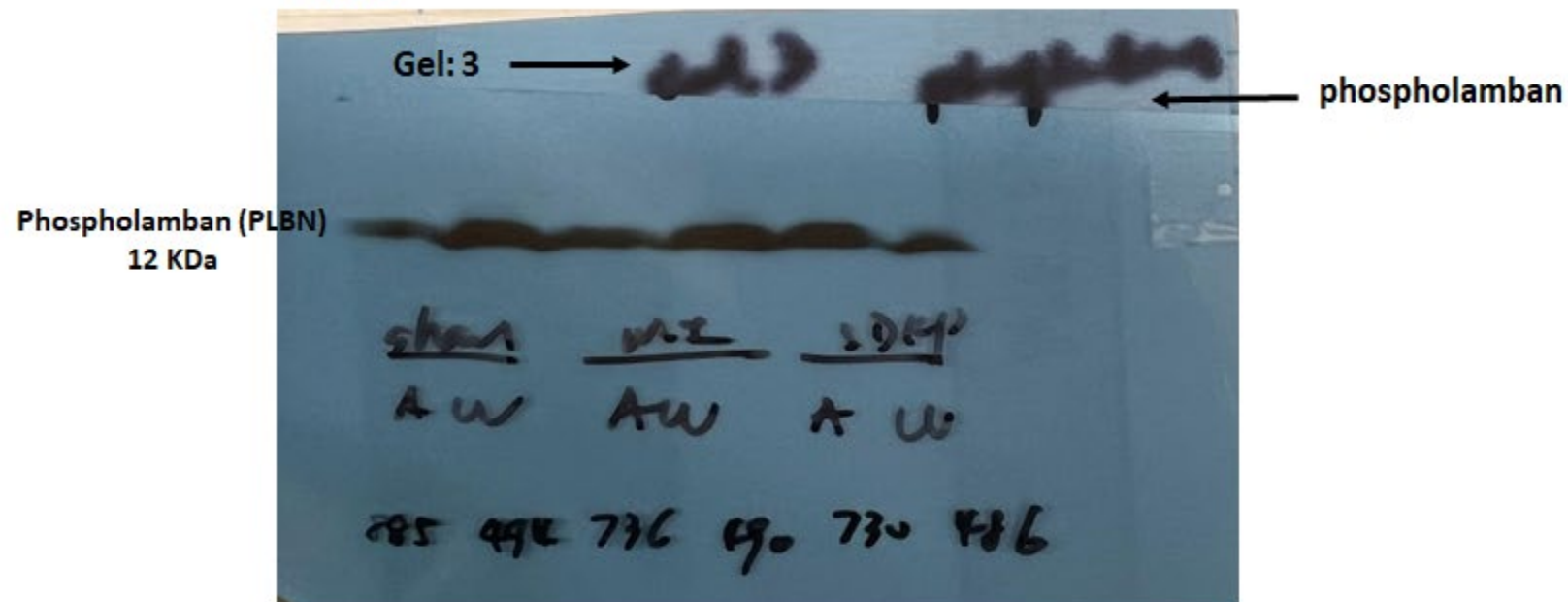
736 ACE-NKO-MI

490: WT-MI

730: ACE-NKO- MI + Ac-SDKP

486: WT- MI + Ac-SDKP

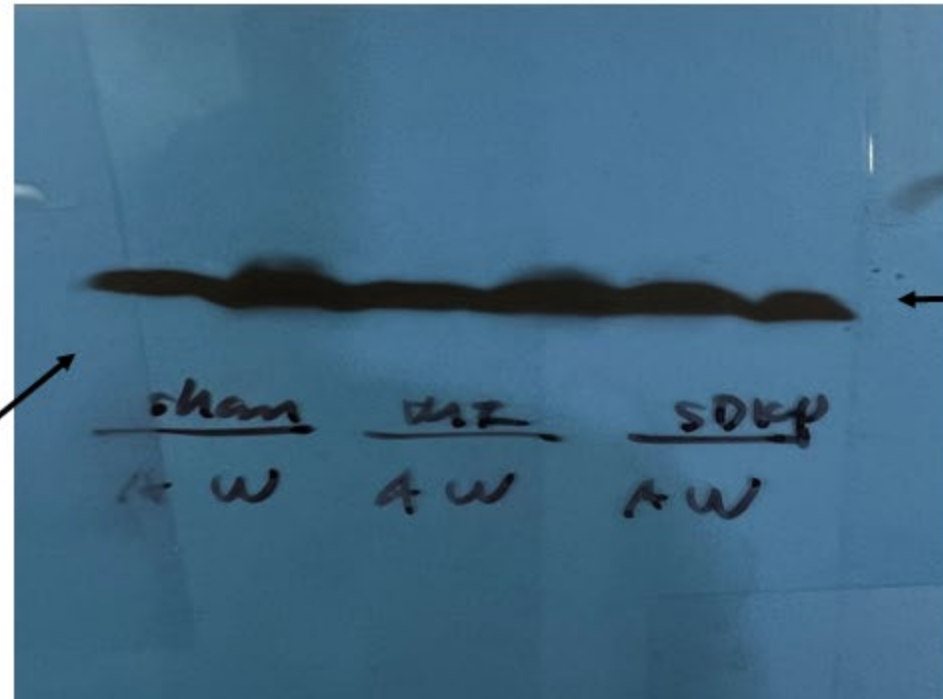
Blot-3



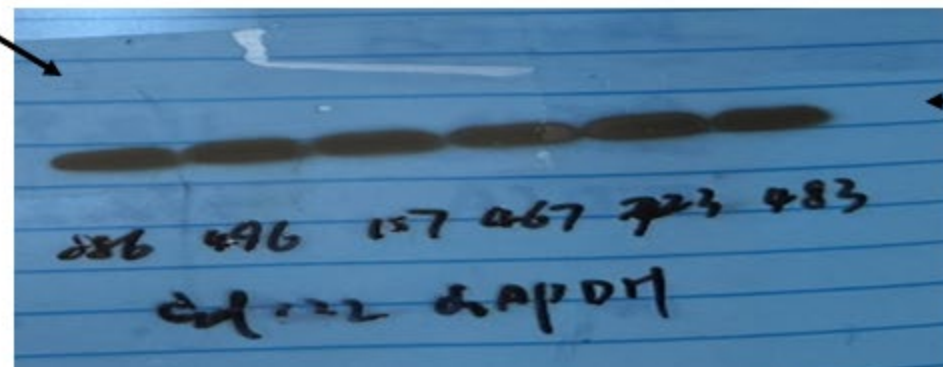
Blot-4

Abbreviation used:
A: ACE-NKO
W and WT: Wild Type
Sham
MI: Myocardial Infarction
SDKP: Ac-SDKP + MI

886: ACE-NKO-Sham
496: WT-Sham
157: ACE-NKO-MI
467: WT-MI
723: ACE-NKO- MI + Ac-SDKP
483: WT- MI + Ac-SDKP



Phospholamban (PLBN)
12 KDa



GAPDH
37 KDa