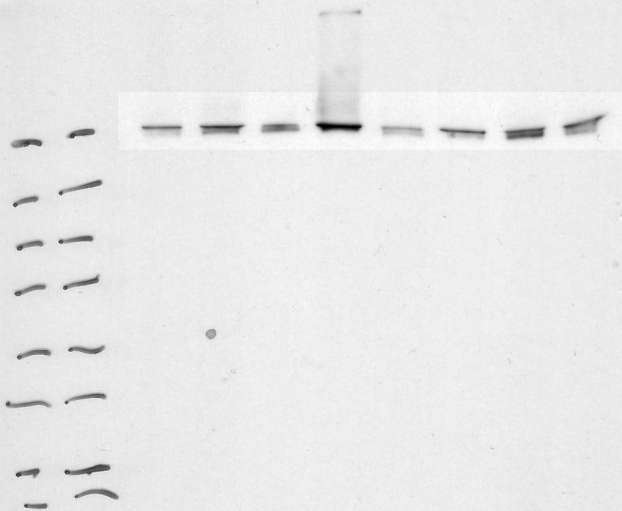


27/2/20.
PFK WT + K1 2Mek.

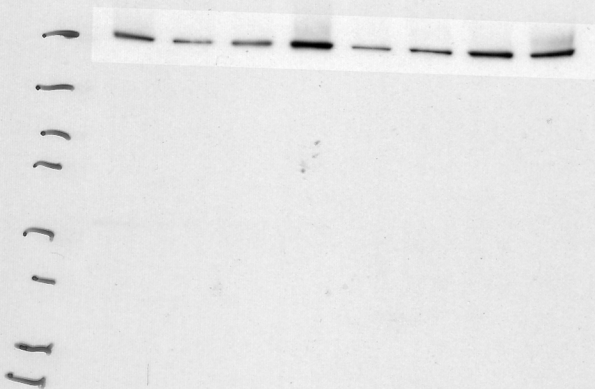
TEC
5 min.

S79.

Buc.



286



Dant.

25/2/20

PFK WOX Metb

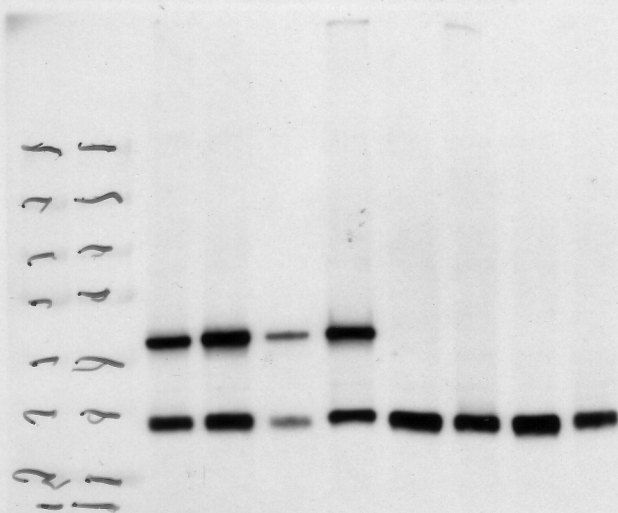
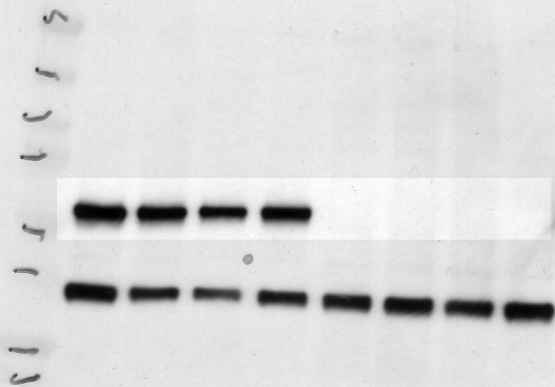
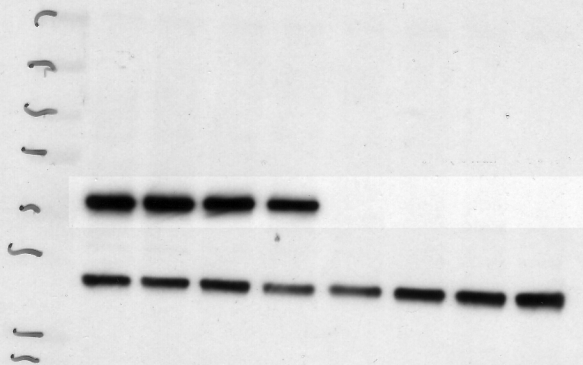
S483/2ADPH

2 MV

[Handwritten signature]

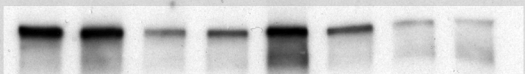
[Handwritten signature]

[Handwritten signature]

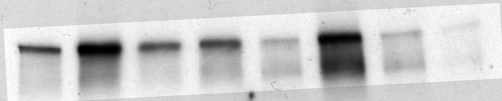


STRATAGENE®

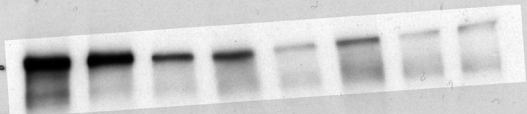
STRATAGENE



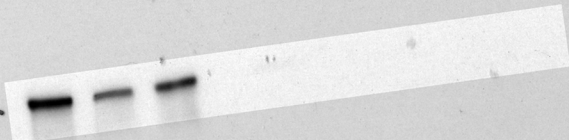
1
1
2
2
2
1
1
1



1
1
2
1
1
1
1



1
1
1
1
1
1
1
1
1
1



1
1
1
1
1
1
1
1
1
1

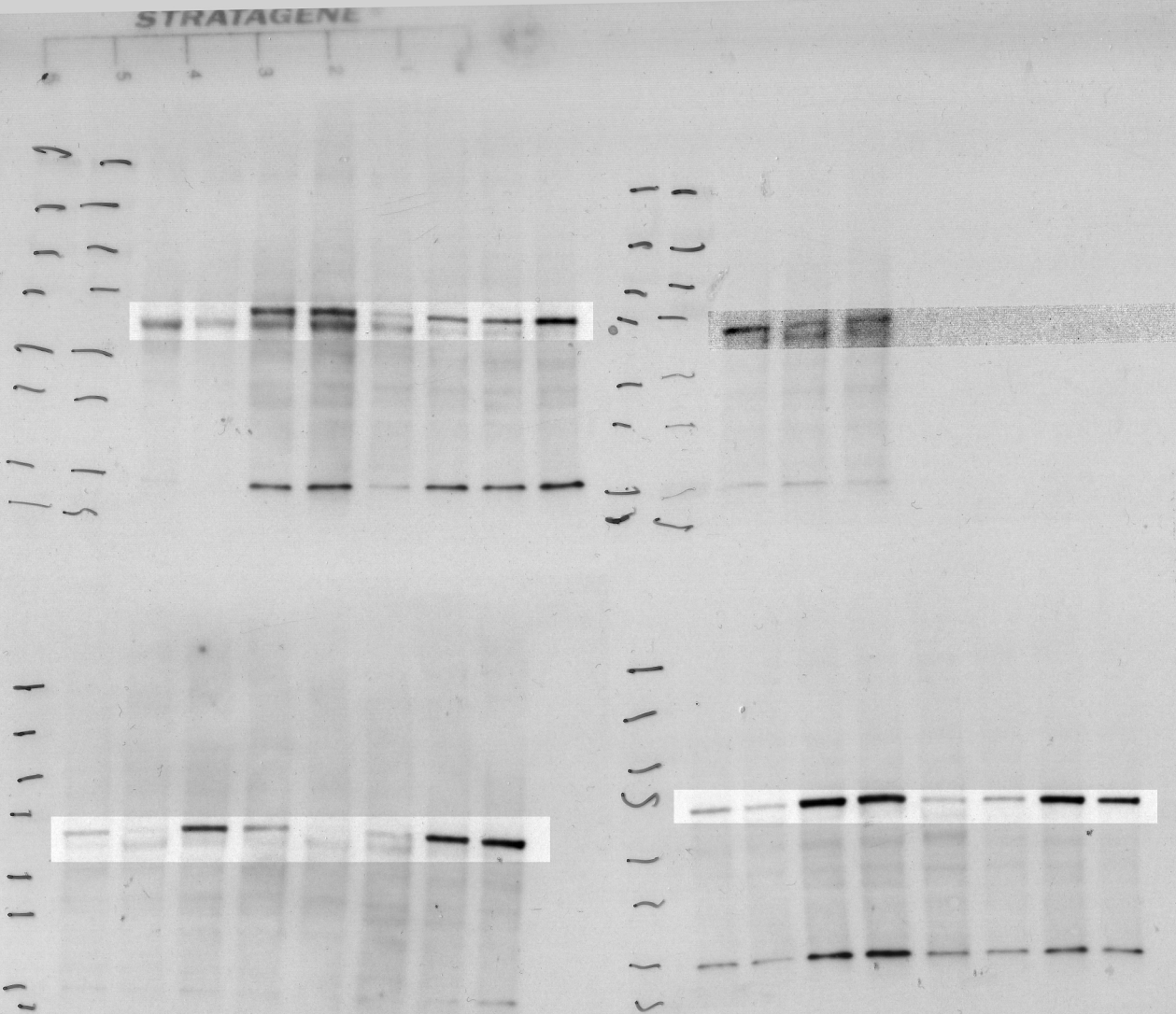
1D 1B

2B 2D

5/1/20 -
Fildonethin
PKR was r. w. m
7 sec.

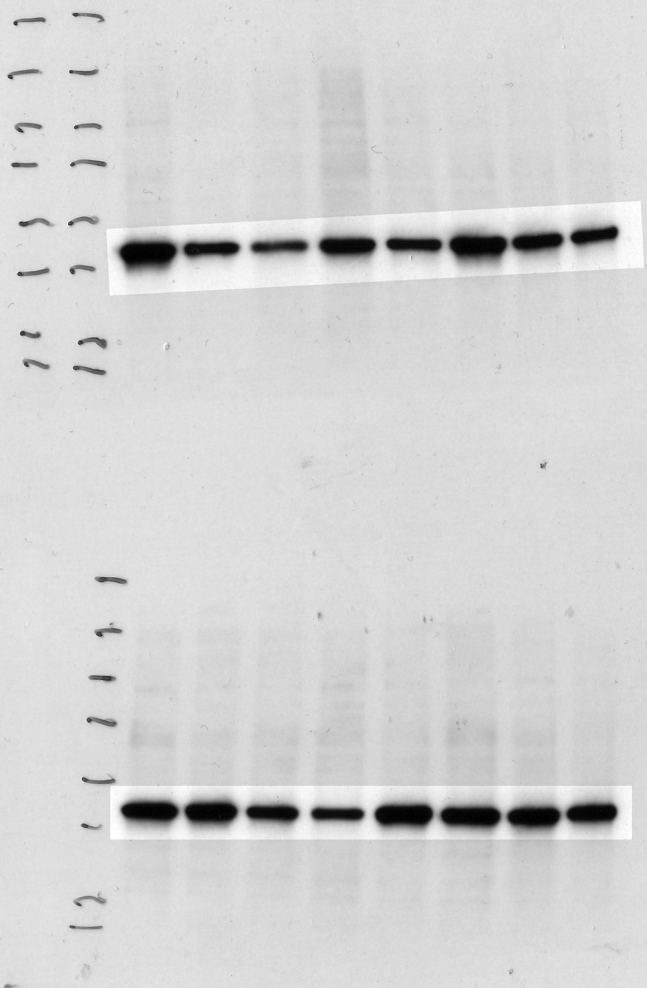
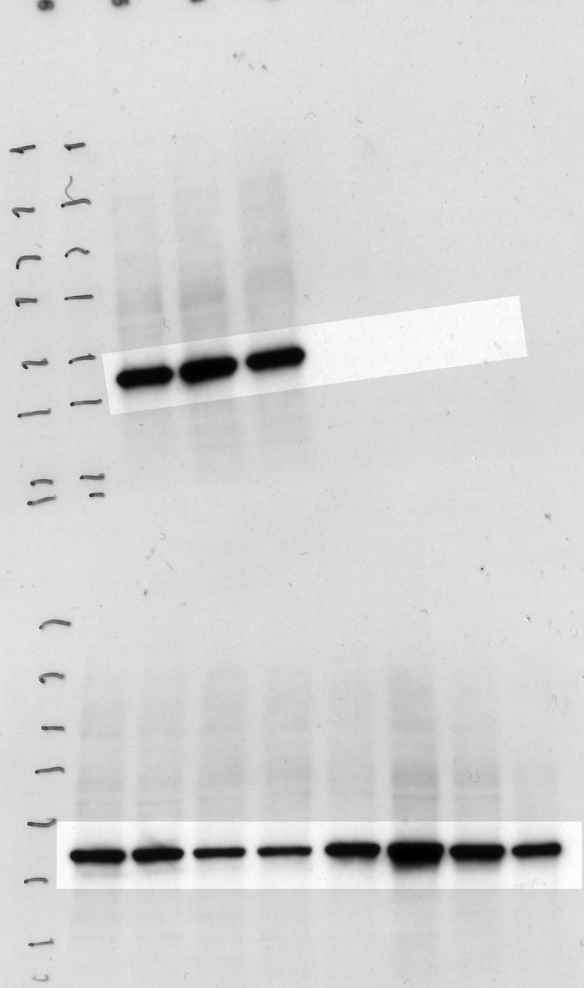
2B 2D
D B.

25/1/20
CPT4
1 min
PFR wt/ki + Met.
und



STRATAGENE®

2D 2B
1B 1D



4/1/20
 A-SMD.
 PFK-WB vs.
 XRD rM
 40 sec

CRATIGENE

29/1/20

CRPDH

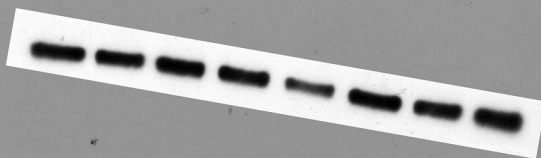
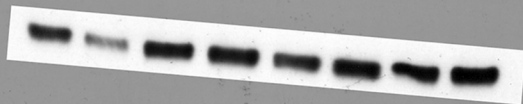
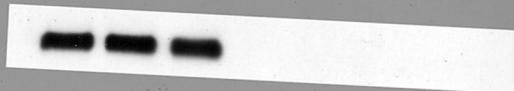
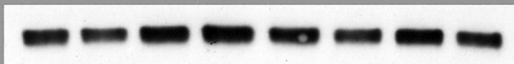
3 2D

2B D

PSKWT/RI-Met

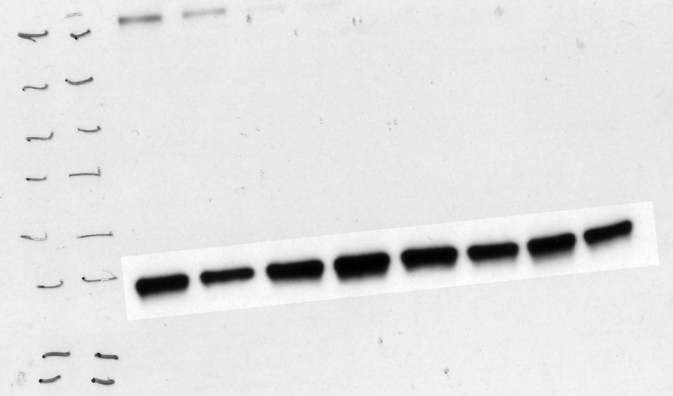
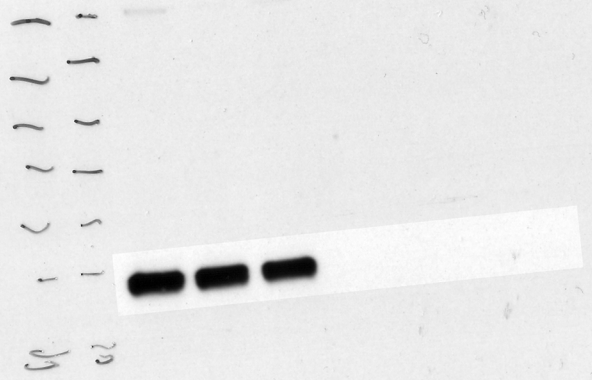
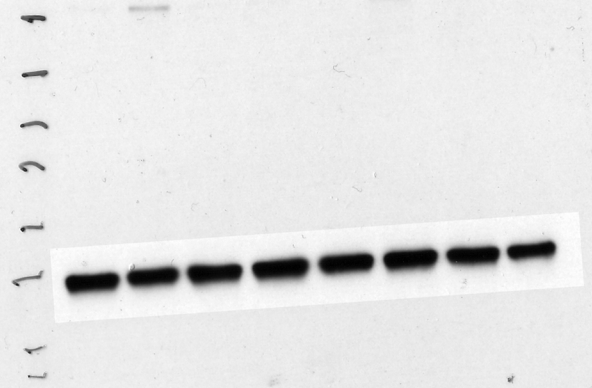
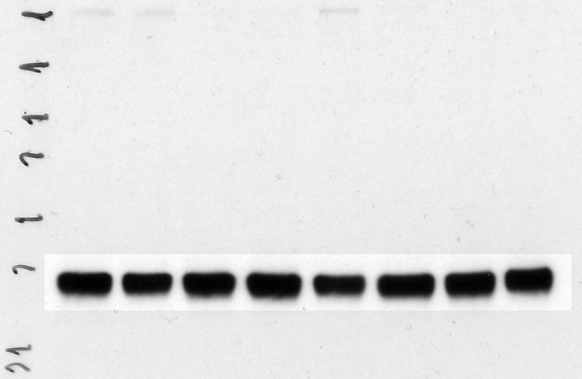
WB

1ml



STRATAGENE

D B.
2B 2B



6/1/02
 GAPD > 4x
 PFK W0 vs. W02
 30 sec.

8/10/22

PEK WD vs. UW → gel.

Total PEKWB 3

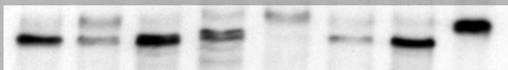
45 seconds.

538

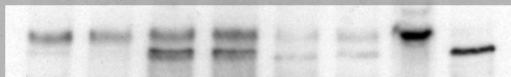
B



D

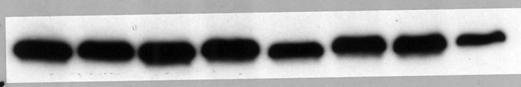


2B

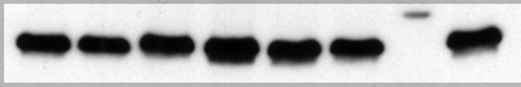


9/10/22
PFRUCO vs. Wb + mea
Total ACC + GAPD
1 min

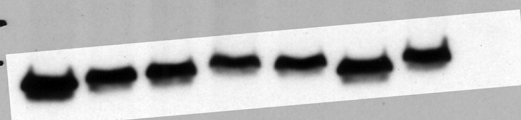
Blue.



2 Blue.



Deal.



STRATAGENE®
1
2
3
4
5
6

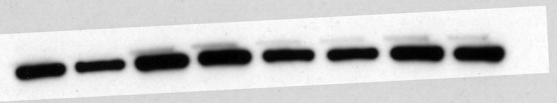
STRATAGENE®

215
213 D

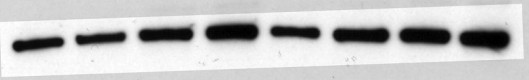
STANDARD

1 2 3 4 5 6 7 8 9 10 11 12 13 14 15 16 17 18 19 20 21 22 23 24 25 26 27 28 29 30 31 32 33 34 35 36 37 38 39 40 41 42 43 44 45 46 47 48 49 50 51 52 53 54 55 56 57 58 59 60 61 62 63 64 65 66 67 68 69 70 71 72 73 74 75 76 77 78 79 80 81 82 83 84 85 86 87 88 89 90 91 92 93 94 95 96 97 98 99 100

1 2 3 4 5 6 7 8 9 10 11 12 13 14 15 16 17 18 19 20 21 22 23 24 25 26 27 28 29 30 31 32 33 34 35 36 37 38 39 40 41 42 43 44 45 46 47 48 49 50 51 52 53 54 55 56 57 58 59 60 61 62 63 64 65 66 67 68 69 70 71 72 73 74 75 76 77 78 79 80 81 82 83 84 85 86 87 88 89 90 91 92 93 94 95 96 97 98 99 100

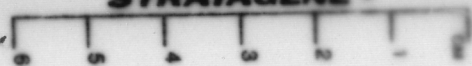


1 2 3 4 5 6 7 8 9 10 11 12 13 14 15 16 17 18 19 20 21 22 23 24 25 26 27 28 29 30 31 32 33 34 35 36 37 38 39 40 41 42 43 44 45 46 47 48 49 50 51 52 53 54 55 56 57 58 59 60 61 62 63 64 65 66 67 68 69 70 71 72 73 74 75 76 77 78 79 80 81 82 83 84 85 86 87 88 89 90 91 92 93 94 95 96 97 98 99 100

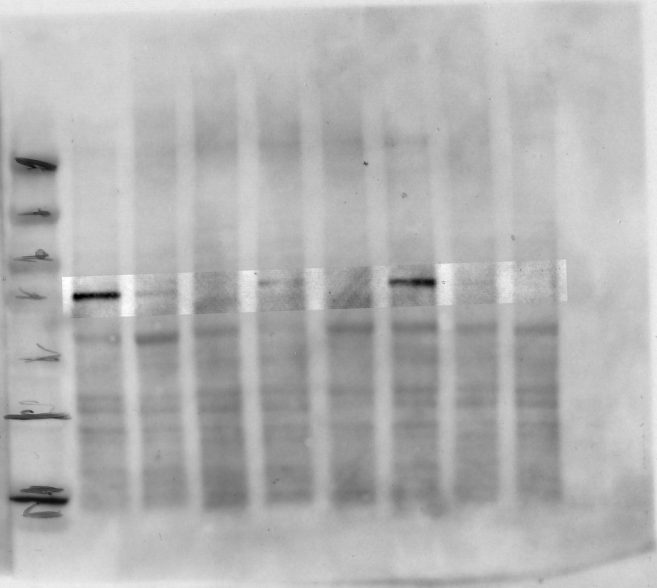
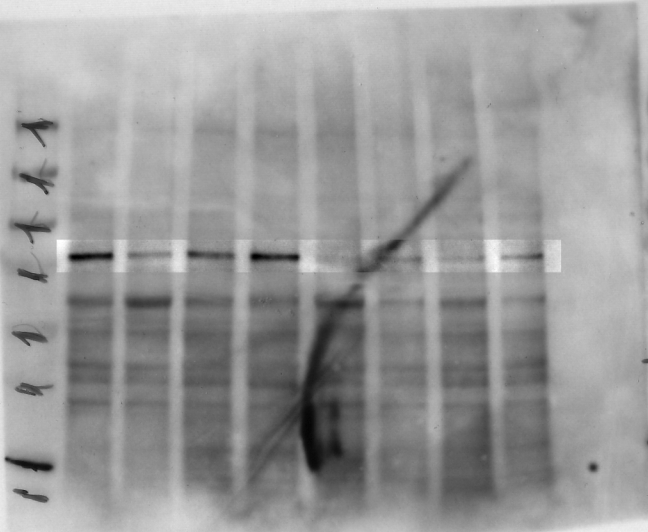


21/1/2
Haskins
FKW + K:
WD
1mk)

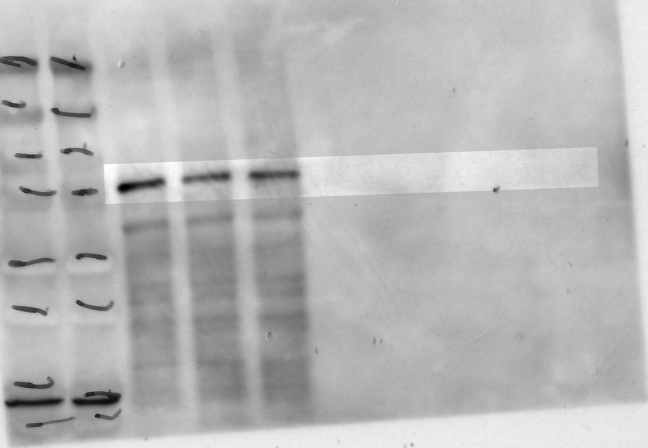
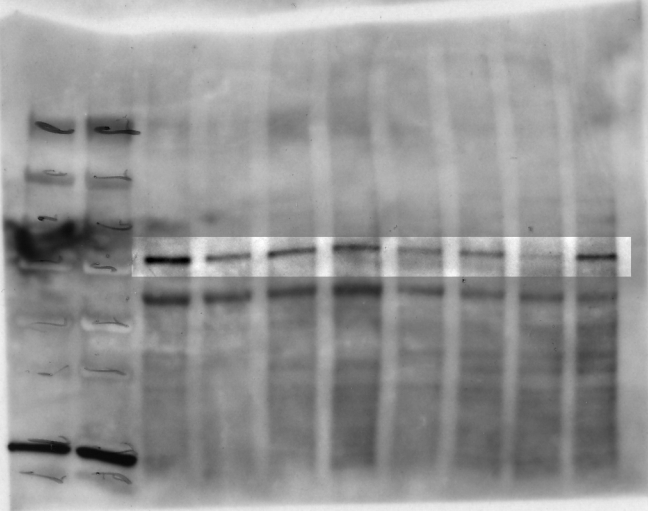
STRATAGENE®



STRATAGENE®

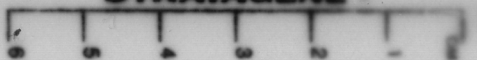


B D
23 27

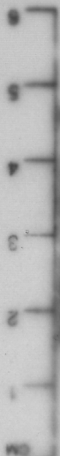


06/2/22
PF 141
SIR W T (12)
MCE
A m m

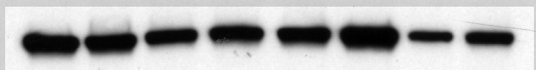
STRATAGENE®



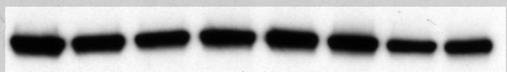
STRATAGENE®



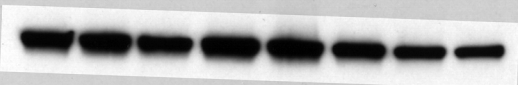
11 11 11 11 11 11 11 11



11 11 11 11 11 11 11 11



11 11 11 11 11 11 11 11



11 11 11 11 11 11 11 11



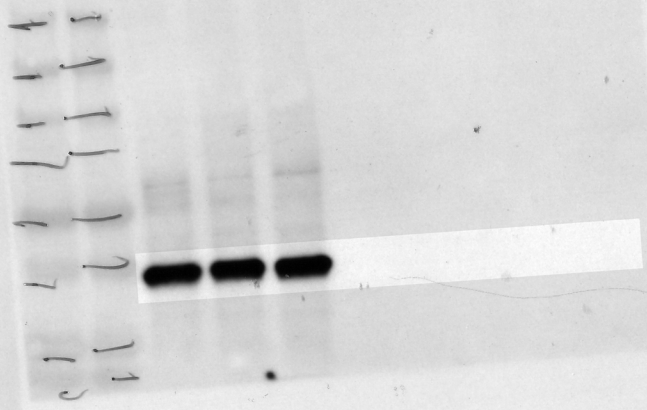
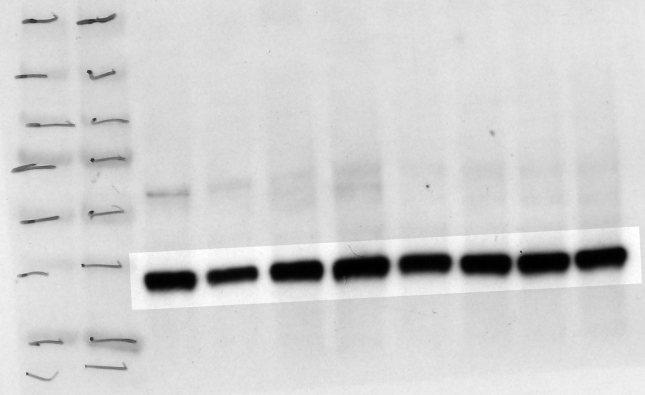
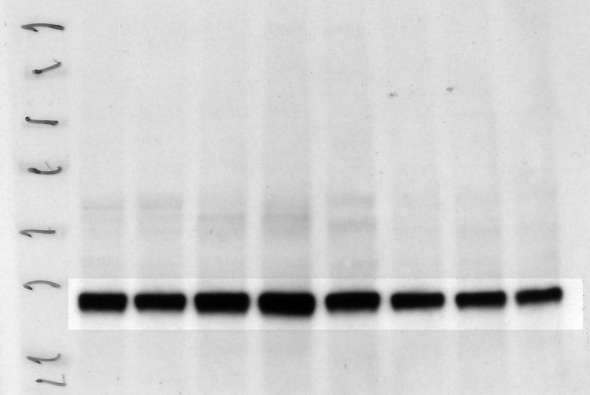
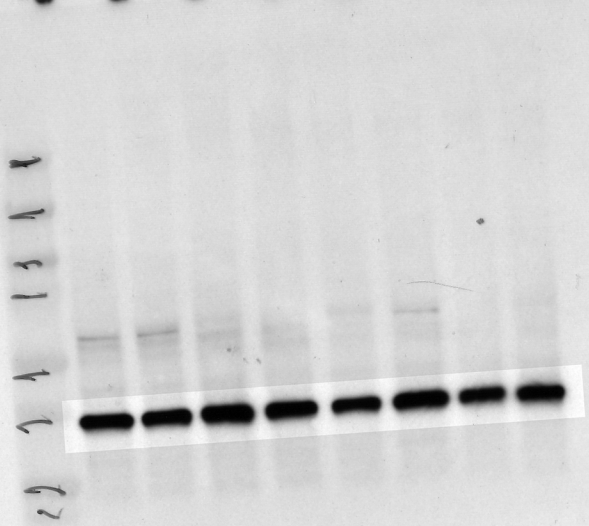
D 12
20 21

29/2/20
ppk with k1
+ med
30 sec
PHAD 2

STRATAGENE®

STRATAGENE®

D B
ZB Z13



25/12/20
 PCR was performed
 with
 CARDIA
 15 min

CRATIGENE

29/1/20

CRPDH

3 2D

2B D

PSKWT/RI-Met

WB

1ml

