

Fig. S1. *Mage12*^{m+/p-} rats display select alterations in dyadic social interaction, and normal performance in select parameters of the open field test.

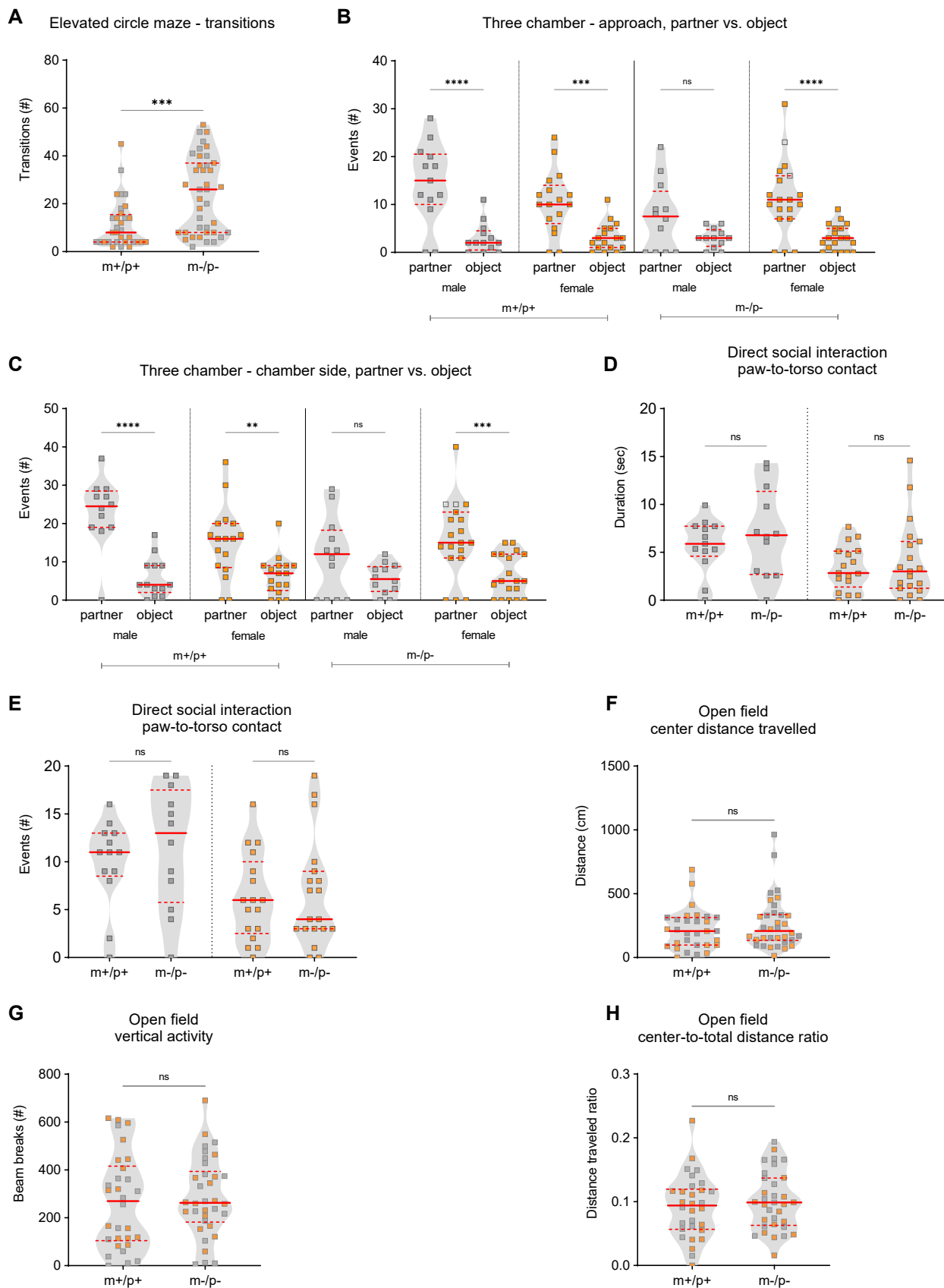


Fig. S2. *Magel2*^{m-/p-} rats display additional select alterations in anxiety-like behavior and social approach, normal generalized contact in dyadic social interaction tests, and normal performance in select parameters of the open field test.

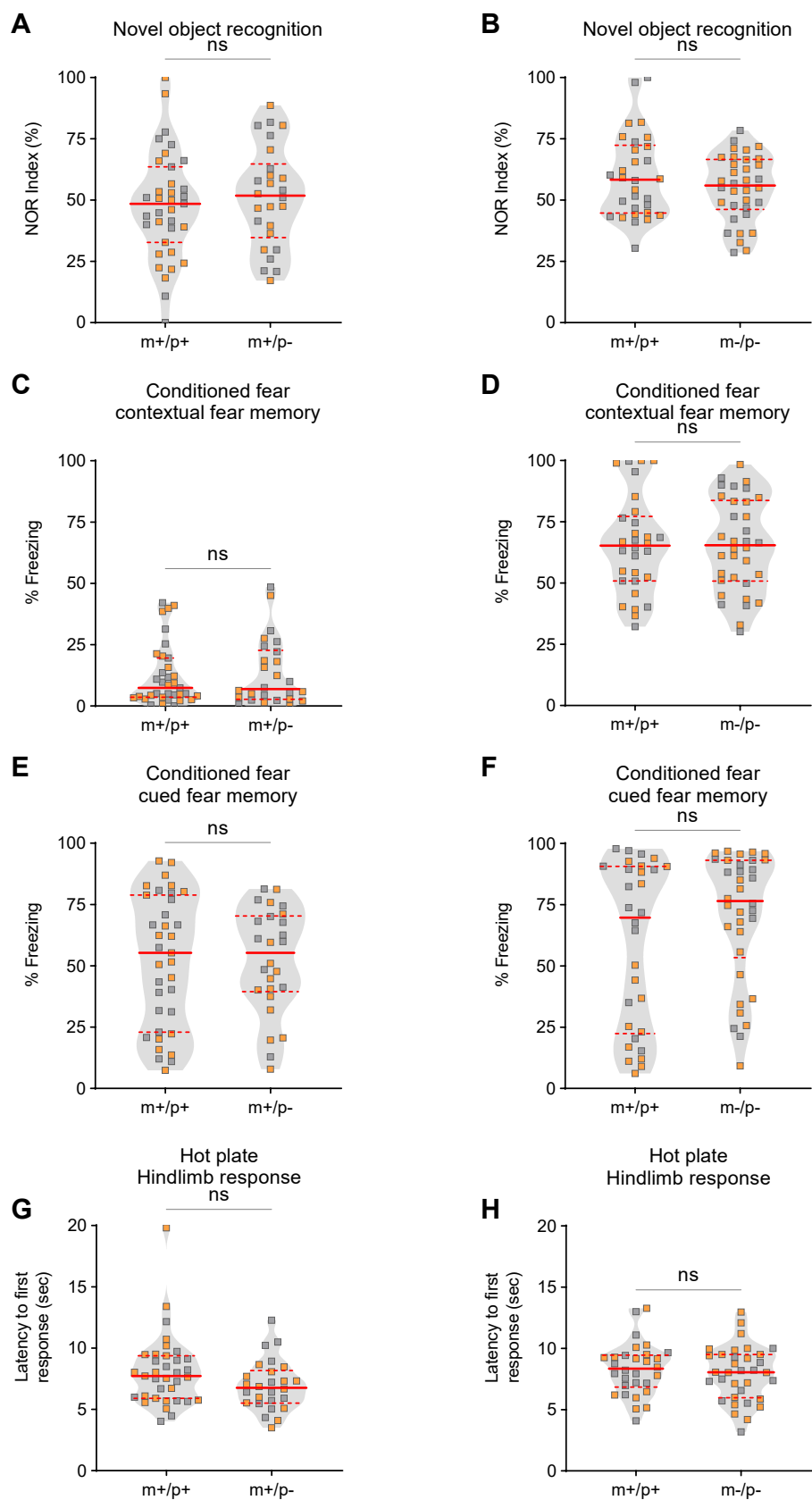


Fig. S3. Novel object recognition, aversive fear memory and pain sensitivity do not appear altered in *Mage12* mutant rats.

Table S1. Statistical summary of behavioral data

[Click here to download Table S1](#)

Table S2. Statistical summary of organ systems physiology data

[Click here to download Table S2](#)