

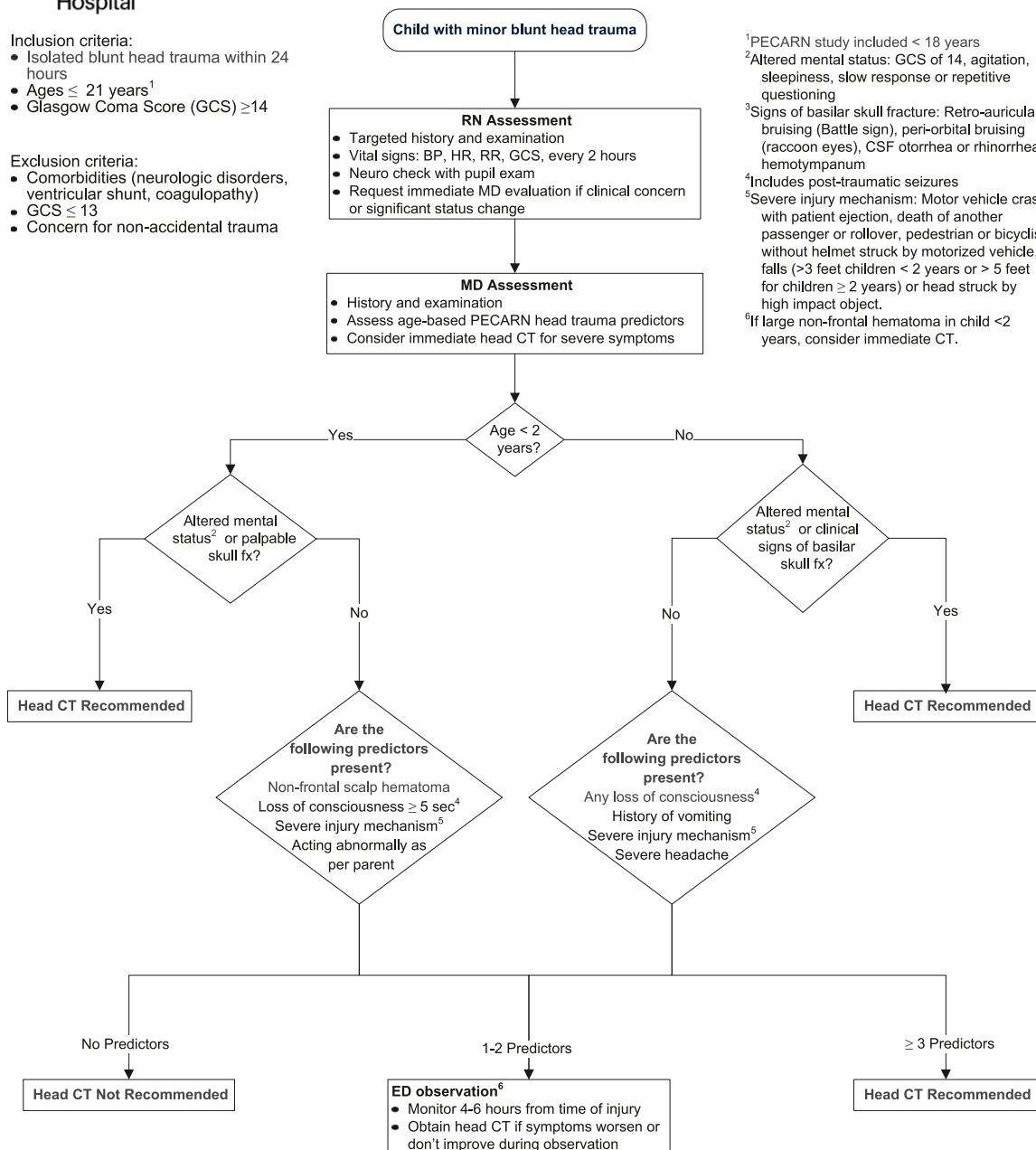
Supplemental Information



- Inclusion criteria:**
- Isolated blunt head trauma within 24 hours
 - Ages ≤ 21 years¹
 - Glasgow Coma Score (GCS) ≥ 14

- Exclusion criteria:**
- Comorbidities (neurologic disorders, ventricular shunt, coagulopathy)
 - GCS ≤ 13
 - Concern for non-accidental trauma

Head Trauma EBG Algorithm © Emergency Department, Boston Children's Hospital



¹PECARN study included < 18 years
²Altered mental status: GCS of 14, agitation, sleepiness, slow response or repetitive questioning
³Signs of basilar skull fracture: Retro-auricular bruising (Battle sign), peri-orbital bruising (raccoon eyes), CSF otorrhea or rhinorrhea, hemotympanum
⁴Includes post-traumatic seizures
⁵Severe injury mechanism: Motor vehicle crash with patient ejection, death of another passenger or rollover, pedestrian or bicyclist without helmet struck by motorized vehicle, falls (>3 feet children < 2 years or > 5 feet for children ≥ 2 years) or head struck by high impact object.
⁶If large non-frontal hematoma in child <2 years, consider immediate CT.

NOTE: The medication dosing contained within these guidelines is provided for reference only. Please refer to your institutional formulary or ordering guidelines when placing orders for clinical care of patients.