

## Supporting Information

### Biological properties of heparins modified with an arylazopyrazole-based photoswitch

Marta Stolarek<sup>1</sup>, Aleksandra Pycior<sup>1</sup>, Piotr Bonarek<sup>2</sup>, Małgorzata Opydo<sup>3</sup>, Elzbieta Kolaczowska<sup>3</sup>, Kamil Kamiński<sup>1</sup>, Andrzej Mogielnicki<sup>4</sup>, Krzysztof Szczubiałka<sup>1,\*</sup>

<sup>1</sup> Faculty of Chemistry, Jagiellonian University, Gronostajowa 2, 30-387 Krakow, Poland

<sup>2</sup> Faculty of Biochemistry, Biophysics and Biotechnology, Jagiellonian University, Gronostajowa 7, 30-387 Krakow, Poland

<sup>3</sup> Laboratory of Experimental Hematology, Institute of Zoology and Biomedical Research, Faculty of Biology, Jagiellonian University, Gronostajowa 9, 30-387 Krakow, Poland

<sup>4</sup> Department of Pharmacodynamics, Medical University of Białystok, Mickiewicza 2c, 15-089 Białystok, Poland

Corresponding author email: [szczubia@chemia.uj.edu.pl](mailto:szczubia@chemia.uj.edu.pl)

### Contents

**Figure S1. LC-MS data of PS (PDA detector)**

**Figure S2. Scheme of UFH-PS and Enox-PS synthesis**

**Figure S3. FT-IR absorption spectra of Enox, Enox-PS and PS**

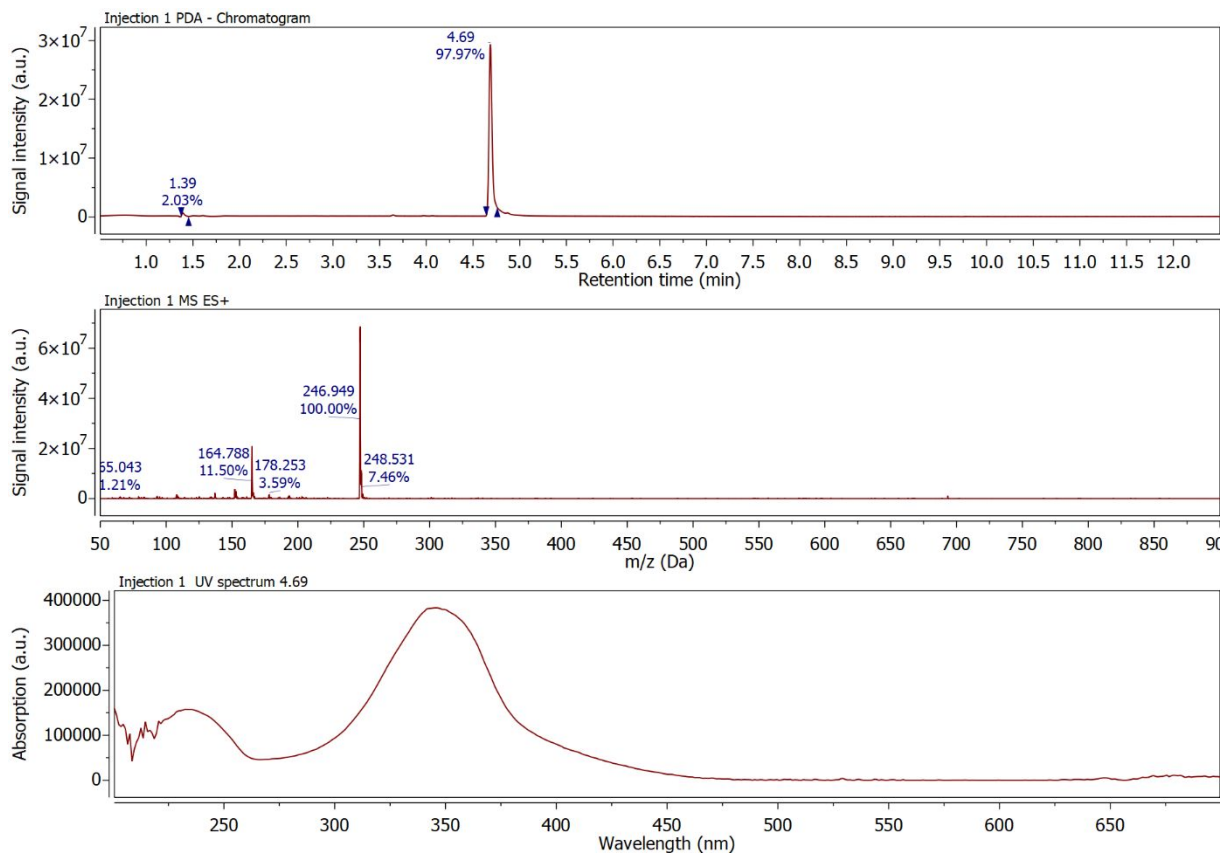
**Figure S4. <sup>1</sup>H NMR spectrum of 2.**

**Figure S5. <sup>1</sup>H NMR spectrum of PS**

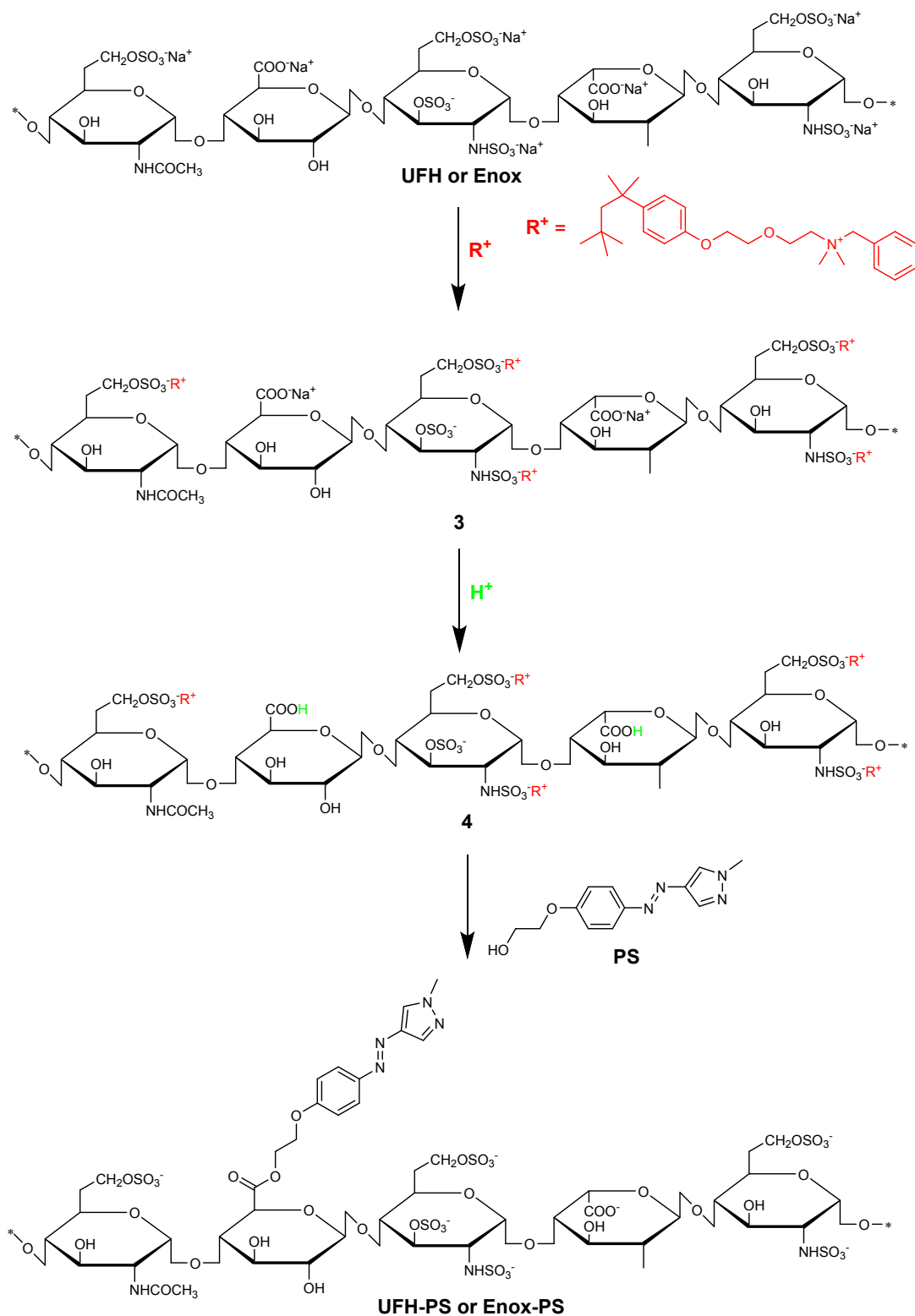
**Figure S6. <sup>13</sup>C NMR spectrum of PS**

**Figure S7. GPC traces of UFH-PS6 and Enox-PS.**

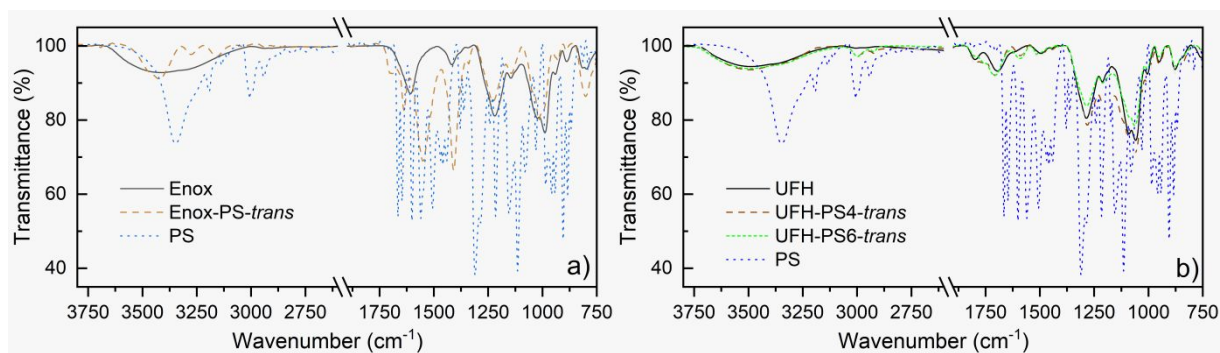
**Figure S8. Spectral distributions of the LED lamps used for the irradiations.**



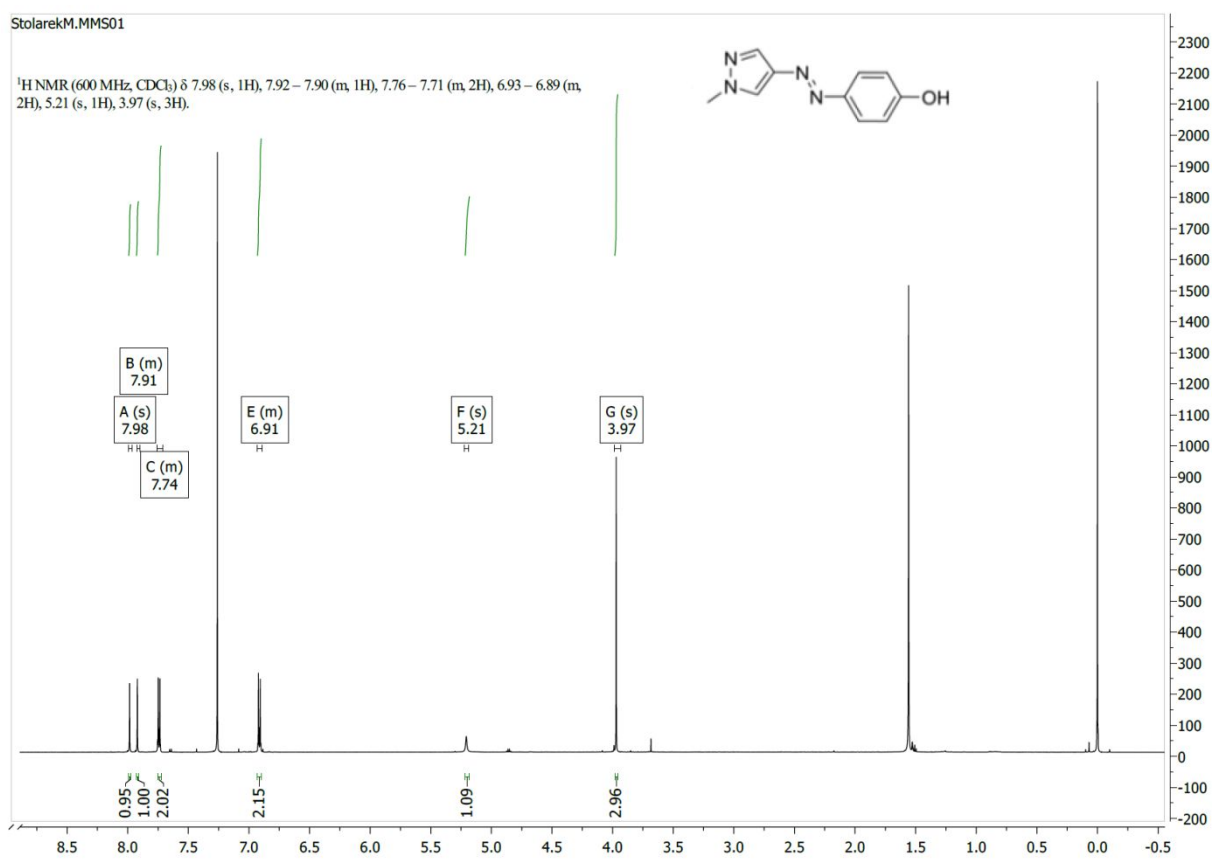
**Figure S1. LC-MS data of PS (PDA detector)**



**Figure S2. Scheme of UFH-PS and Enox-PS synthesis**



**Figure S3.** FT-IR absorption spectra of (a) Enox, Enox-PS-*trans* and PS; and (b) UFH, UFH-PS4-*trans*, UFH-PS6-*trans*, and PS



**Figure S4.** <sup>1</sup>H NMR spectrum of 2.

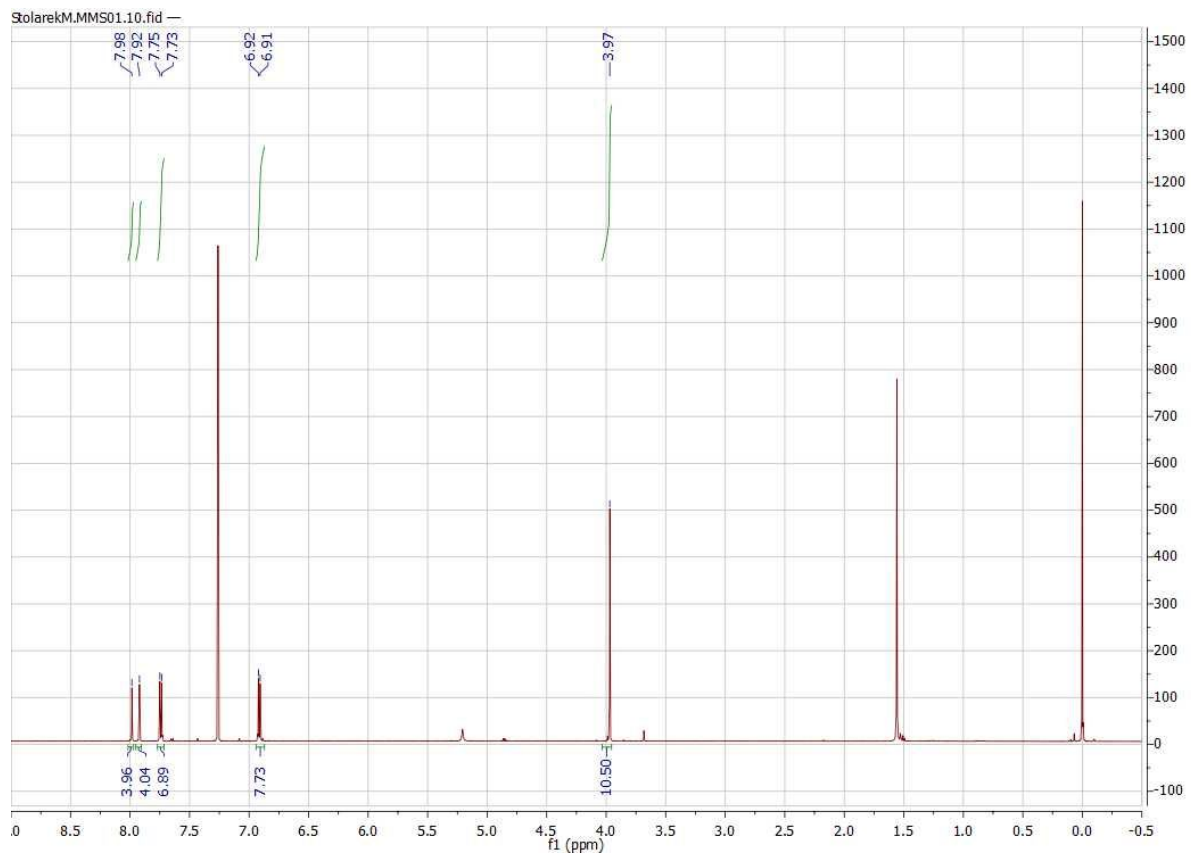


Figure S5. <sup>1</sup>H NMR spectrum of PS

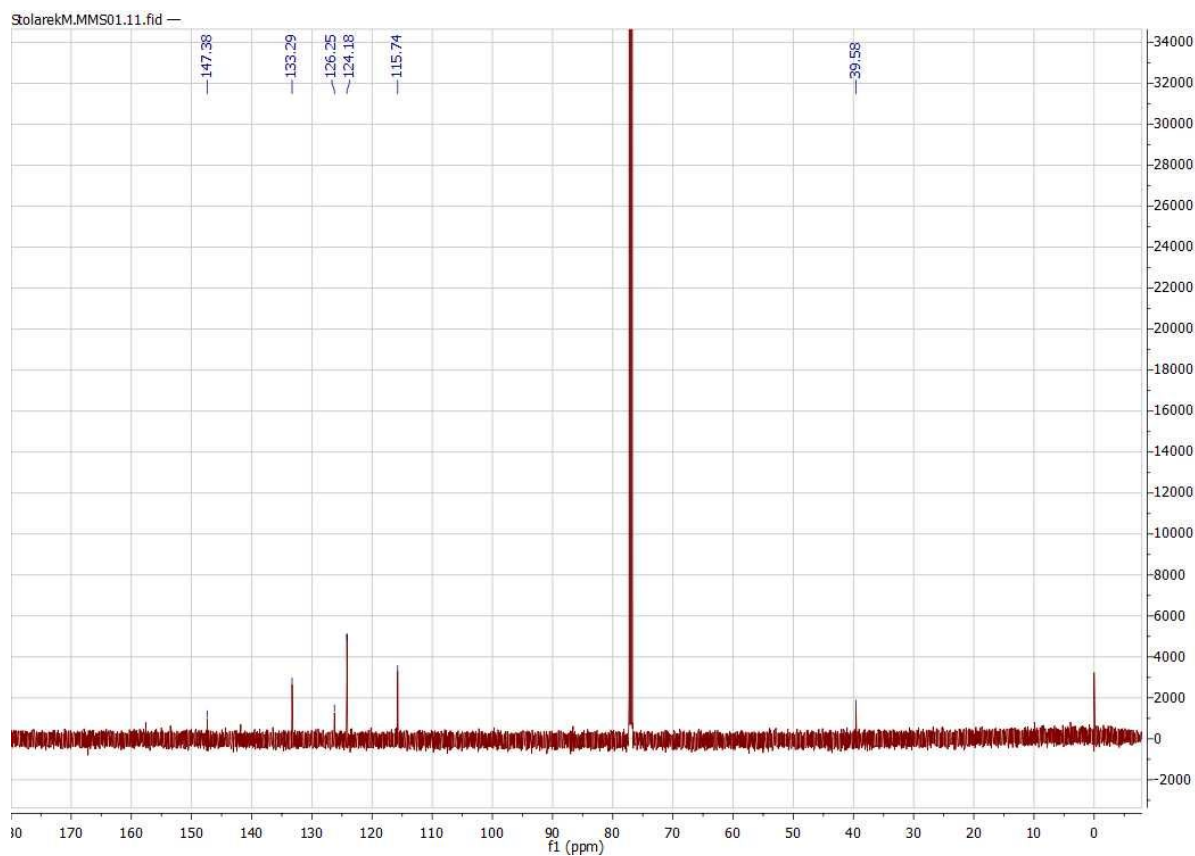


Figure S6.  $^{13}\text{C}$  NMR spectrum of PS

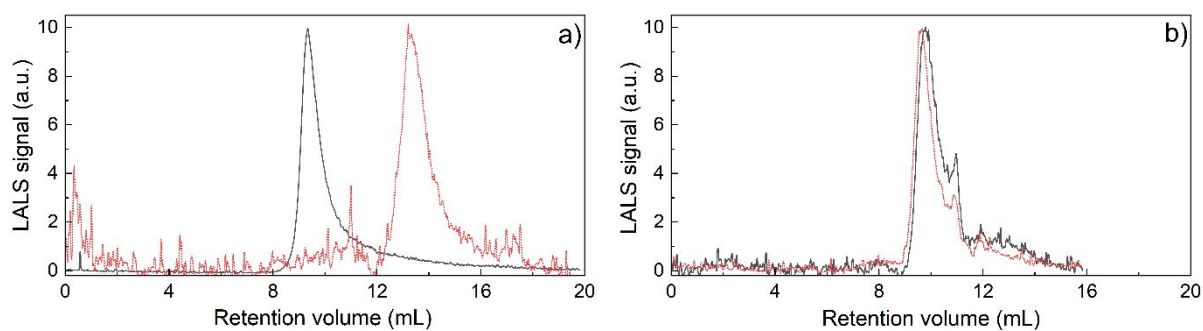
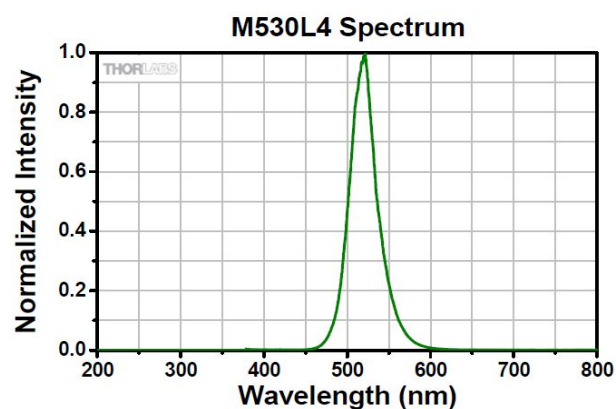


Figure S7. GPC traces of a) UFH-PS6 and b) Enox-PS. Traces for *trans* and *cis* PS configuration are shown a solid and dotted lines, respectively.



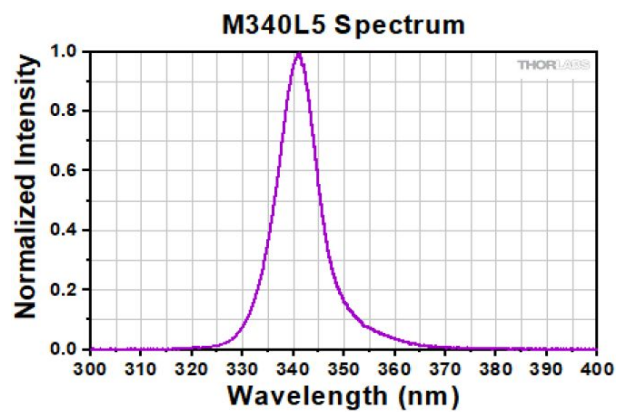


Figure S8. Spectral distributions of the LED lamps used for the irradiations. Data taken from the lamp specifications given by the manufacturer (Thorlabs, [www.thorlabs.com](http://www.thorlabs.com)).