

# **Colonisation with Extended-Spectrum Cephalosporin-Resistant Enterobacterales and Infection Risk in Surgical Patients: a Systematic Review and Meta-Analysis Supplementary**

## **Material**

Elda Righi<sup>1</sup>, Luigia Scudeller<sup>2</sup>, Massimo Mirandola<sup>1</sup>, Alessandro Visentin<sup>1</sup>, Nico T. Mutters<sup>3</sup>, Marco

Meroi<sup>1</sup>, Anna Schwabe<sup>3</sup>, Anna Erbogasto<sup>1</sup>, Gianluca Vantini<sup>4</sup>, Elizabeth Cross<sup>5</sup>, Maddalena Giannella<sup>6</sup>, Xavier Guirao<sup>7</sup>, Evelina Tacconelli<sup>1</sup>.

<sup>1</sup> Infectious Diseases, Department of Diagnostics and Public Health, University of Verona, Verona,

Italy

<sup>2</sup> Research and Innovation Unit, IRCCS Bologna University Hospital, Bologna, Italy <sup>3</sup> University Hospital Bonn, Institute for Hygiene and Public Health, Bonn, Germany

<sup>4</sup> Department of Medicine, University of Verona, Verona, Italy

<sup>5</sup> Department of Global Health and Infection, Brighton and Sussex Medical School, Brighton, United Kingdom

<sup>6</sup> Infectious Diseases Unit, IRCCS Azienda Ospedaliero Universitaria di Bologna, Department of Medical and Surgical Sciences, University of Bologna, Italy

<sup>7</sup> Surgical Endocrine Unit, Department of General Surgery, Surgical Site Prevention Unit, Parc Tauli University Hospital, Sabadell, Spain

## **Corresponding author**

Elda Righi, MD PhD

Infectious Diseases Division

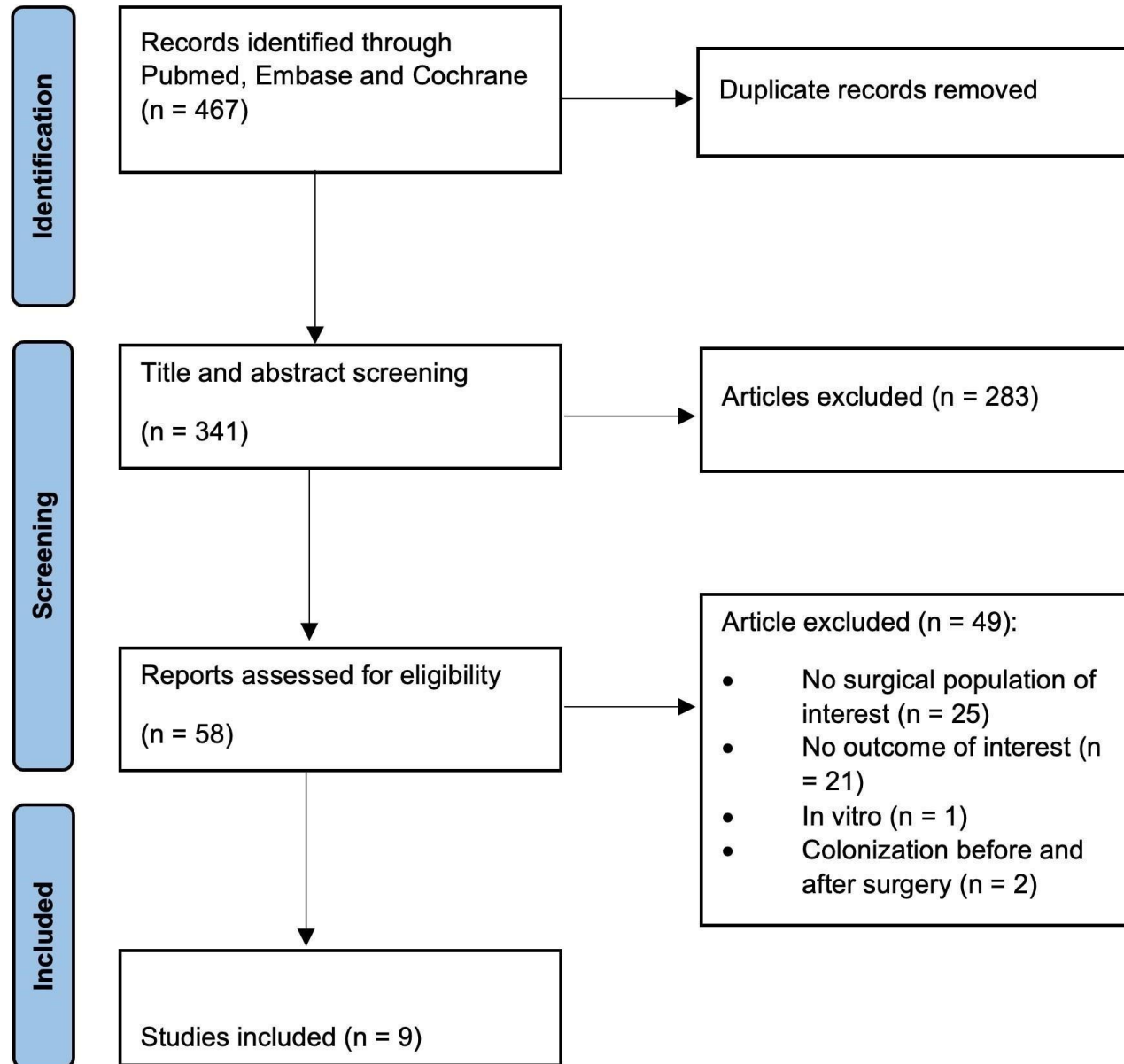
Diagnostics and Public Health Department

University of Verona

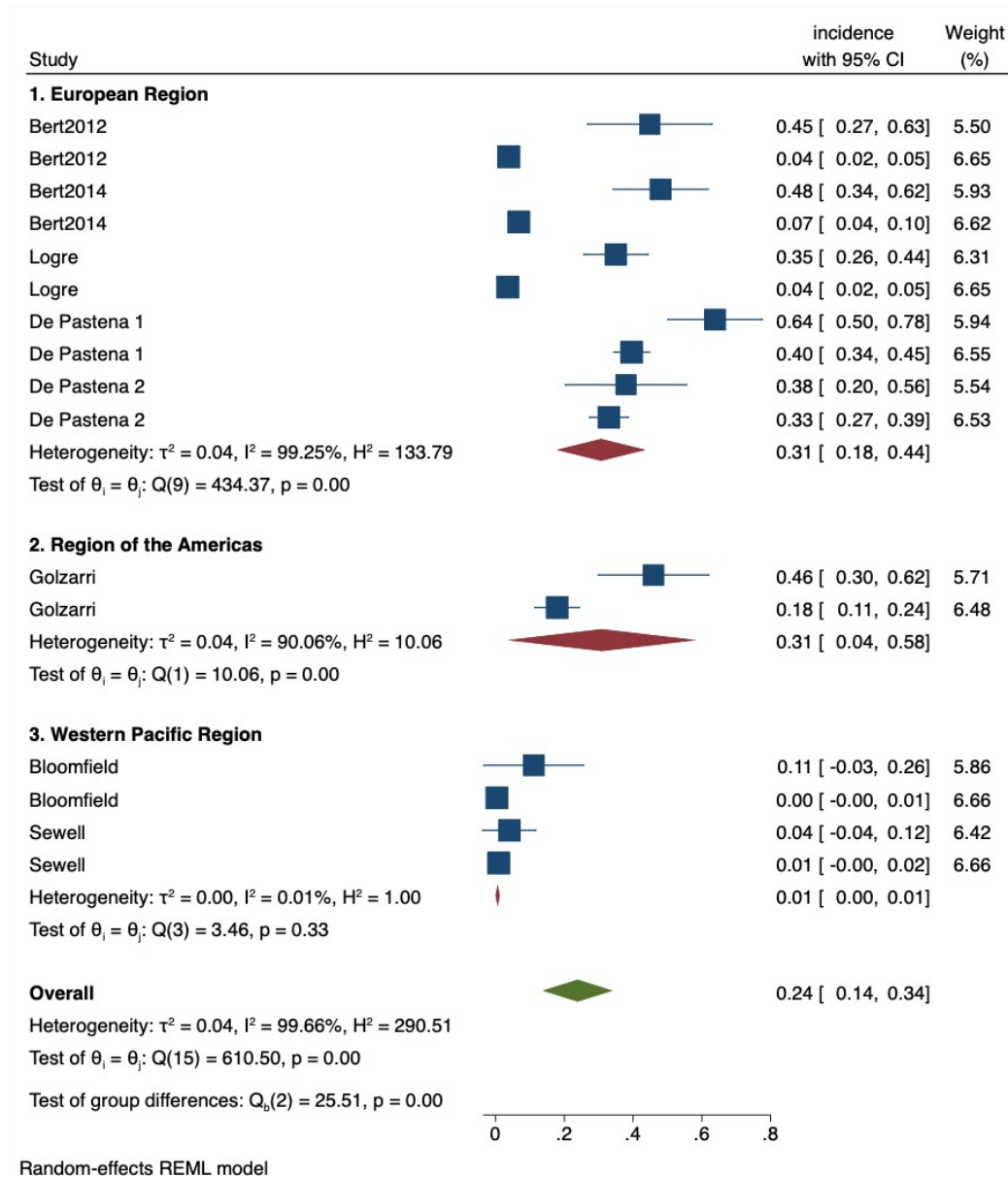
P.le L.A. Scuro 10, 37134 Verona, Italy e-mail:

elda.righi@univr.it

Supplementary Figure 1. PRISMA (Preferred Reporting Items for Systematic reviews and Meta-Analyses) flow diagram

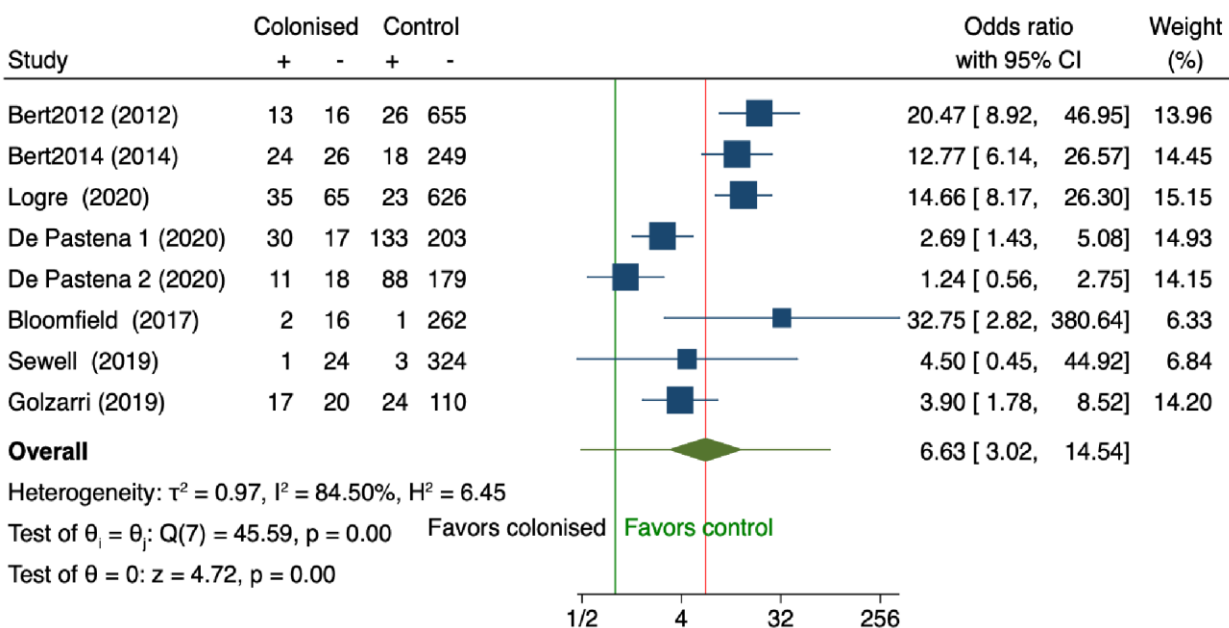


## Supplementary Figure 2. Forest plots of geographic distribution of postoperative infections according to the area

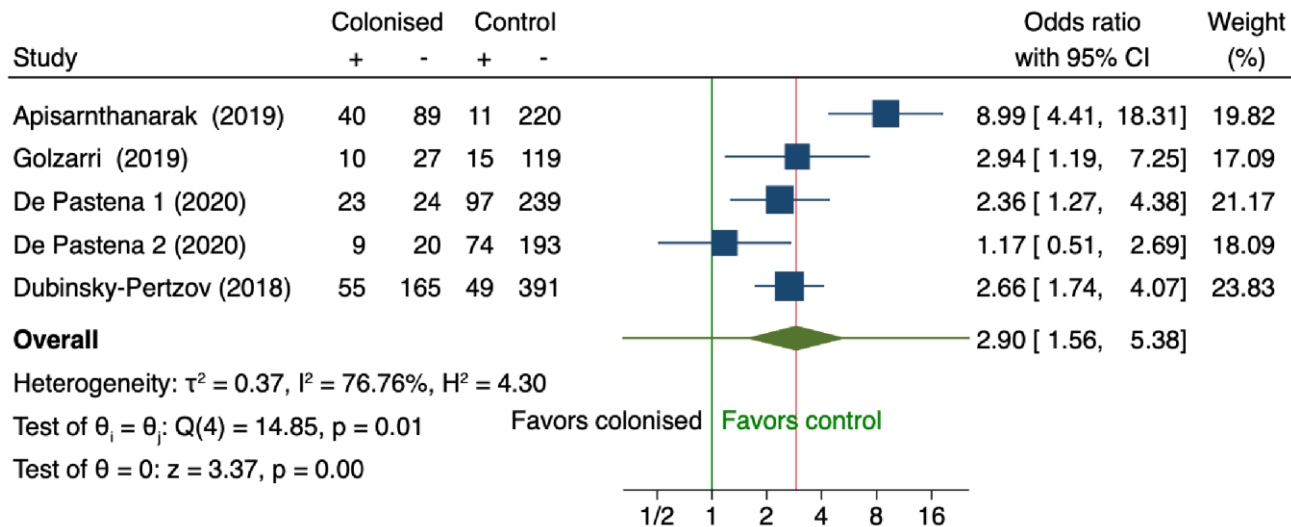


### Supplementary Figure 3. Forest plots reporting the pooled OR in colonized vs. noncolonized patients

#### A) Postoperative infections

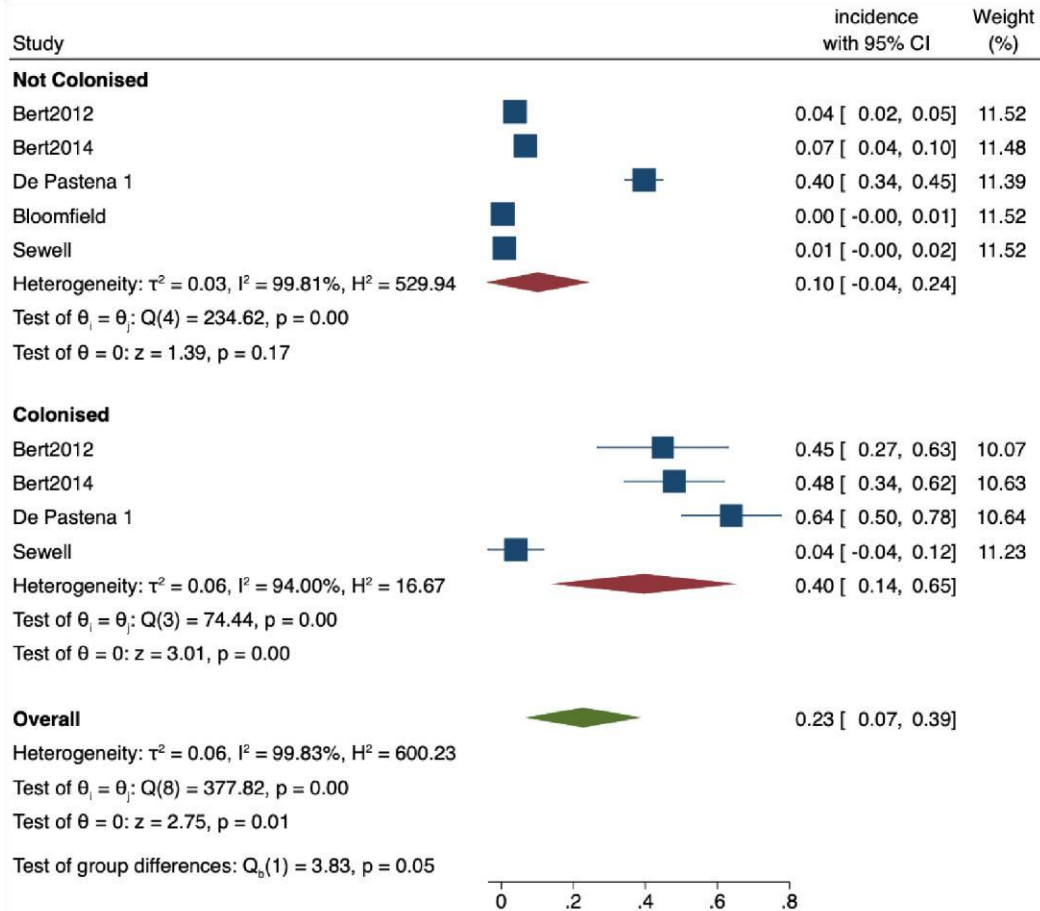


#### B) SSIs

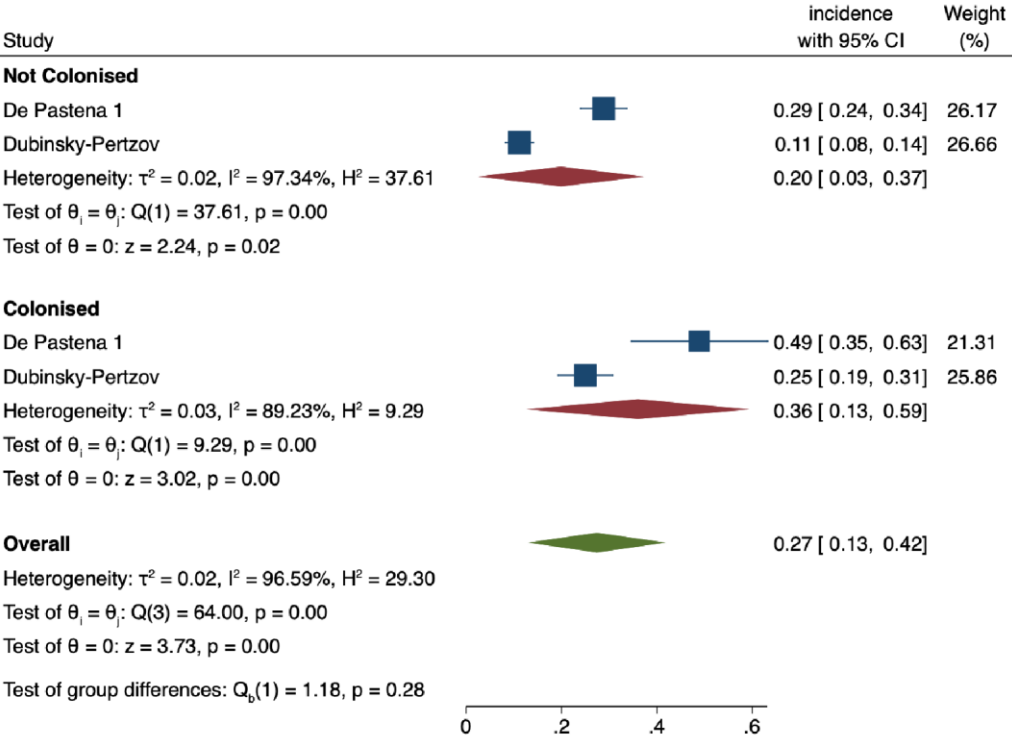


# Supplementary Figure 4. Forest plots of infection incidence risk excluding targeted PAP

## A) Postoperative infections

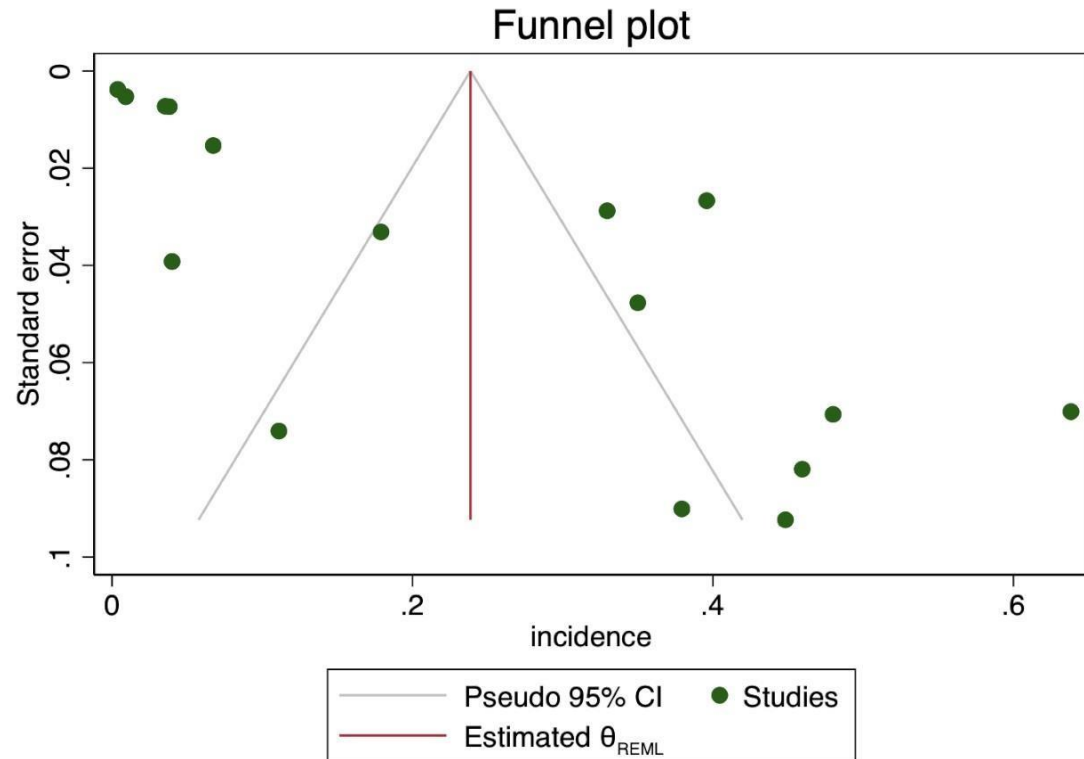


## B) SSIs



## Supplementary Figure 5. Funnel plots

A) Postoperative infections



B) SSIs

