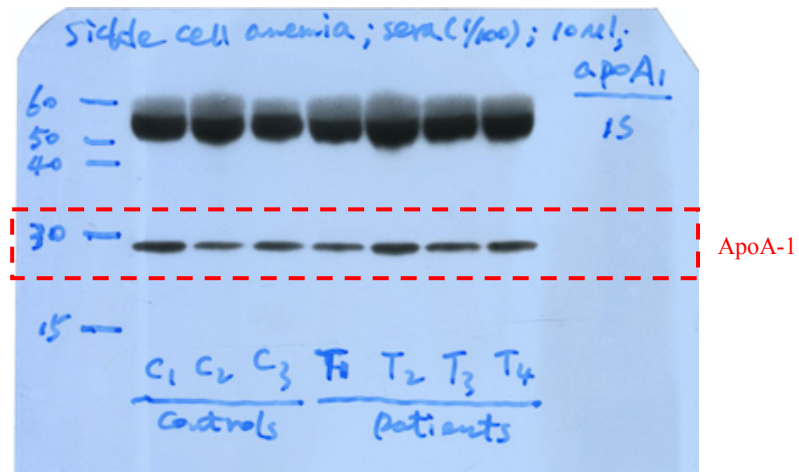


The original, uncropped gels/blots

1. The original, uncropped blots for ApoA-1 (MW = ~28.3 kDa) in Fig. 1C (the dashed red box indicates the cropped blots used in the paper).



2. The original, uncropped blots for ApoB (the MW of ApoB-100 is ~510 kDa) in Fig. 1C (the dashed red box indicates the cropped blots used in the paper).

