

Adverse muscle composition is a significant risk factor for all-cause mortality in NAFLD



Jennifer Linge,^{1,2,*} Patrik Nasr,³ Arun J. Sanyal,⁴ Olof Dahlqvist Leinhard,^{1,2,5,†} Mattias Ekstedt^{3,5,†}

¹AMRA Medical AB, Linköping, Sweden; ²Division of Diagnostics and Specialist Medicine, Department of Health, Medicine and Caring Sciences, Linköping University, Linköping, Sweden; ³Department of Gastroenterology and Hepatology, and Department of Health, Medicine and Caring Sciences, Linköping University, Linköping, Sweden; ⁴Stravitz-Sanyal Institute of Liver Disease and Metabolic Health, Department of Internal Medicine, VCU School of Medicine, Richmond, VA, USA; ⁵Center for Medical Image Science and Visualization (CMIV), Linköping University, Linköping, Sweden

JHEP Reports 2023. <https://doi.org/10.1016/j.jhepr.2022.100663>

Background & Aims: Adverse muscle composition (MC) (*i.e.*, low muscle volume and high muscle fat) has previously been linked to poor functional performance and comorbidities in non-alcoholic fatty liver disease (NAFLD). In this study we aimed to investigate associations of all-cause mortality with liver fat, NAFLD, and MC in the UK Biobank imaging study.

Methods: Magnetic resonance images of 40,174 participants were analyzed for liver proton density fat fraction (PDFF), thigh fat-free muscle volume (FFMV) z-score, and muscle fat infiltration (MFI) using the AMRA[®] Researcher. Participants with NAFLD were sex-, age-, and BMI-matched to participants without NAFLD with low alcohol consumption. Adverse MC was identified using previously published cut-offs. All-cause mortality was investigated using Cox regression. Models within NAFLD were crude and subsequently adjusted for sex, age, BMI (M1), hand grip strength, physical activity, smoking, alcohol (M2), and previous cancer, coronary heart disease, type 2 diabetes (M3).

Results: A total of 5,069 participants had NAFLD. During a mean (\pm SD) follow-up of 3.9 (\pm 1.4) years, 150 out of the 10,138 participants (53% men, age 64.4 [\pm 7.6] years, BMI 29.7 [\pm 4.4] kg/m²) died. In the matched dataset, neither NAFLD nor liver PDFF were associated with all-cause mortality, while all MC variables achieved significance. Within NAFLD, adverse MC, MFI and FFMV z-score were significantly associated with all-cause mortality and remained so in M1 and M2 (crude hazard ratios [HRs] 2.84, 95% CI 1.70–4.75, $p < 0.001$; 1.15, 95% CI 1.07–1.24, $p < 0.001$; 0.70, 95% CI 0.55–0.88, $p < 0.001$). In M3, the relationship was attenuated for adverse MC and FFMV z-score (adjusted HRs 1.72, 95% CI 1.00–2.98, $p = 0.051$; 0.77, 95% CI 0.58–1.02, $p = 0.069$) but remained significant for MFI (adjusted HR 1.13, 95% CI 1.01–1.26, $p = 0.026$).

Conclusions: Neither NAFLD nor liver PDFF was predictive of all-cause mortality. Adverse MC was a strong predictor of all-cause mortality in individuals with NAFLD.

Impact and implications: Individuals with fatty liver disease and poor muscle health more often suffer from poor functional performance and comorbidities. This study shows that they are also at a higher risk of dying. The study results indicate that measuring muscle health (the patient's muscle volume and how much fat they have in their muscles) could help in the early detection of high-risk patients and enable targeted preventative care.

© 2022 The Author(s). Published by Elsevier B.V. on behalf of European Association for the Study of the Liver (EASL). This is an open access article under the CC BY-NC-ND license (<http://creativecommons.org/licenses/by-nc-nd/4.0/>).

Introduction

The prevalence of non-alcoholic fatty liver disease (NAFLD) is high and rising in parallel with the obesity and type 2 diabetes mellitus (T2DM) epidemics.¹ Although NAFLD is highly prevalent, it remains challenging to foresee who will progress towards more advanced liver disease and consequently be at increased risk of liver-related events (*i.e.*, decompensation and/or hepatocellular carcinoma).² A reason for this unpredictability is the high heterogeneity and wide range of clinical phenotypes observed within NAFLD. Most individuals with NAFLD do not progress to

advanced liver disease, and there has been a recent rise in discussions on whether NAFLD should be redefined to include criteria related to obesity and metabolic syndrome (*e.g.*, metabolic [dysfunction]-associated fatty liver disease [MAFLD]).³ Identifying clinically meaningful sub-phenotypes within NAFLD could improve preventative care, aid in the development of effective pharmacological treatments, and reduce healthcare costs by separating high- and low-risk patients in the early stages of liver disease.

Sarcopenia (a muscle disease characterized by progressive loss of muscle mass and function) is intensified in individuals with metabolic disorders and is highly prevalent in end-stage diseases.^{4–9} Although sarcopenia and frailty are clear concerns in later stages of liver disease, the importance of muscle health is commonly overlooked in earlier disease states and more prevalent conditions like obesity, T2DM, or NAFLD.^{10,11} It is still unclear if sarcopenia accelerates the progression of disease or the other way around, but research has shown that poor muscle health is

Keywords: sarcopenia; Magnetic resonance imaging; Imaging biomarker; survival; Muscle fat infiltration; Myosteatosis; UK Biobank.

Received 7 October 2022; accepted 27 November 2022; available online 24 December 2022

[†] Senior authors contributed equally

* Corresponding author. Address: Badhusgatan 5, 58 222 Linköping, Sweden. Tel.: +46 72 399 70 29.

E-mail address: jennifer.linge@amramedical.com (J. Linge).



associated with higher mortality in patients with cirrhosis and may affect the outcome of liver transplantation.¹⁰⁻¹³ Although sarcopenia is recognized as a highly debilitating condition with personal, social, and economic burdens when untreated, there is no consensus on how to diagnose and quantitatively assess the disease.¹⁴⁻¹⁷ This complicates the implementation of sarcopenia assessment to support treatment decisions in late stages of liver disease and hinders further understanding of whether early knowledge of a patient's muscle status could help guide treatment plans.

Based on a rapid and standardized MRI protocol, muscle composition can be quantified with high accuracy and precision.¹⁸⁻²¹ Measuring both thigh fat-free muscle volume (FFMV) and muscle fat infiltration (MFI) allows for detection of a condition called 'adverse muscle composition'. Adverse muscle composition is prevalent within NAFLD and has been linked to increased comorbidity (coronary heart disease and T2DM) and poor functional performance in individuals with NAFLD, and to all-cause mortality within a general adult population.^{22,23}

This work aimed to investigate the associations of NAFLD, liver fat, and muscle composition with all-cause mortality in the UK Biobank imaging study.

Patients and methods

Participants included in this study were stratified from the first 40,174 individuals scanned in the UK Biobank imaging study. The UK Biobank is a long-term population study following 500,000 volunteers aged 40-69 years recruited between 2006-2010.²⁴ As a sub-study, 100,000 participants are being re-called for a

detailed imaging assessment, including a repeat of the baseline assessments.

Inclusion

The inclusion of participants and analyses are summarized in Fig. 1. For the muscle composition assessment, participants were required to have known sex, age, weight, height, and a complete description of muscle composition (FFMV and MFI of at least one leg) (n = 374 with missing data). For investigations of NAFLD, participants were also required to have non-missing values for MRI liver proton density fat fraction (PDFF), known alcohol consumption (n = 703 with missing data), and low alcohol consumption (<14/21 units/week [females/males]²⁶) (n = 17,112 excluded), resulting in 21,988 participants.

Based on the subset of participants with low alcohol consumption, participants with NAFLD (n = 5,069) were matched 1:1 with controls using sex, age, and BMI, creating a matched dataset of 10,138 individuals.

MRI measurements

The participants were scanned in a Siemens MAGNETOM Aera 1.5-T MRI scanner (Siemens Healthineers, Erlangen, Germany) using a 6-10 min dual-echo Dixon Vibe protocol, providing a water and fat separated volumetric neck-to-knee dataset. Body composition analyses were performed using AMRA[®] Researcher (AMRA Medical AB, Linköping, Sweden).¹⁸⁻²¹ Further details are provided in the supplementary materials and methods. The MRI measurements are publicly available from the UK Biobank (Category 149, Abdominal composition):

- *Liver proton density fat fraction (PDFF)*: The average PDFF of nine regions of interest, placed while avoiding any

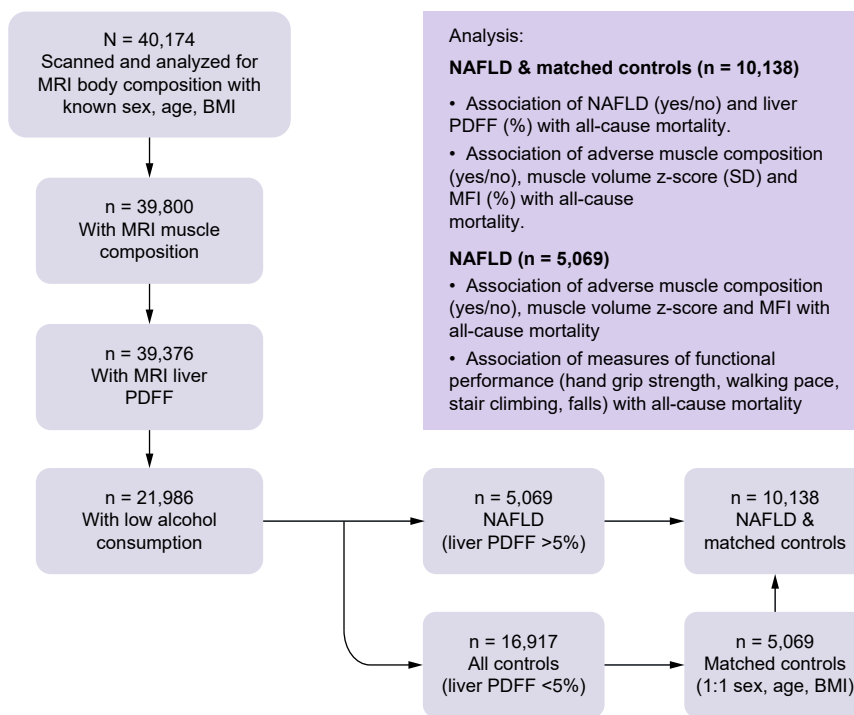


Fig. 1. Inclusion of study participants and summary of analyses. MFI, muscle fat infiltration; MRI, magnetic resonance imaging; NAFLD, non-alcoholic fatty liver disease; PDFF, proton density fat fraction.

inhomogeneities, major vessels, and bile ducts.²¹ Further details are provided in the supplementary materials and methods.

- **Fat-free muscle volume (FFMV, referred to as "muscle volume"):** The volume of all voxels with fat fraction <50% (also known as "viable muscle tissue") in the thighs.^{19,20} If data were missing for one leg, the total thigh muscle volume was estimated by multiplying the available measurement by two.
- **Fat-free muscle volume z-score (referred to as "muscle volume z-score"):** For each participant, a matched virtual control group (VCG) including at least 150 individuals of the same sex and similar BMI was stratified from the study participants with complete muscle composition data. Based on each VCG, a personalized muscle volume z-score was calculated, measuring how many standard deviations each participant was from the mean thigh FFMV/height² of their VCG.²⁵ This variable is sex-, weight-, and height-invariant and has been associated with poor function and increased hospitalization.^{22,25}
- **Muscle fat infiltration (MFI):** The mean fat fraction in the "viable muscle tissue" (*i.e.*, FFMV) of the right and left anterior thighs.^{19,20} If data were missing for one leg, the mean MFI was estimated by the MFI of the other leg. A sex-adjusted MFI was calculated by subtracting the sex-specific population median from each participant's MFI value.

Definitions

NAFLD: Defined by MRI liver PDFF >5% and lack of excess alcohol consumption (<14/21 units/week [females/males]).^{26,27} NAFLD stratification was made directly from the UK Biobank imaging participants (community volunteers, not selected owing to abnormal liver function tests). No exclusions were made based on rarer forms of liver disease or medications.

High MFI: As the magnitude of MFI differs between female and male participants,^{18,23} "high MFI" was defined as >75th percentile of the whole cohort (N = 40,177) for female/male participants separately (>8.82/7.69%).^{22,23}

Low muscle volume z-score: As the muscle volume z-score is sex invariant,²⁵ "low muscle volume z-score" was defined as <25th percentile of the whole cohort (N = 40,174) for both female and male participants (<-0.68 SD).^{22,23}

Adverse muscle composition: Defined by low muscle volume z-score and high MFI according to the previously published definition.^{22,23}

Data collection – UK biobank

Mortality data were obtained through the UK Biobank's linkage to national death registries. Height was recorded using a Seca stadiometer and weight with a Tanita BC418ma. Previous diagnoses of cancer, coronary heart disease, and T2DM were based on electronic healthcare records (accessed September 2021, available from April 1992 to September 2021) and/or self-reported information collected via interviews with trained nurses. Hand grip strength was measured using a Jamar J00105 hydraulic hand dynamometer (protocol provided in [supplementary sections 1-3](#)). The data recorded for the dominant hand were used. If information on handedness was missing or a participant reported using both hands, the mean of the right and left hand was used. Low hand grip strength was defined using the sex-specific cut-offs recommended by the European Working Group on Sarcopenia in Older People (EWGSOP2) (16/

27 kg for female participants/male participants).¹⁶ Information on walking pace, number of falls last year, stairs climbed, smoking, alcohol consumption, and physical activity were acquired through touchscreen questionnaires. The Townsend deprivation index was calculated by the UK Biobank immediately before each participant joined. Further details on variable definitions are provided in the supplementary materials and methods.

Statistical analysis

Population characteristics

Population characteristics were described using mean (SD) for continuous variables and percentages for binary/categorical variables. Statistical testing for differences between groups was linear/logistic regression or Pearson's chi-squared test unadjusted and adjusted for sex, age, and BMI. Due to the skewed distribution of liver PDFF, its distribution was described using the median (IQR).

Associations of NAFLD and muscle composition with all-cause mortality

Investigations were performed using Kaplan-Meier survival curves and Cox regression with years after imaging as the timescale. Both categorical representations (NAFLD=yes/no, 'high MFI'=yes/no, 'low muscle volume'=yes/no and 'adverse muscle composition'=yes/no) and continuous representations (liver PDFF [%], MFI [%], and muscle volume z-score [SD]) were used as predictors. As sensitivity analyses, models were also implemented using the whole cohort (N = 40,174), the whole cohort excluding participants with a previous cancer diagnosis, in men and women separately, and for younger and older participants (using the median age as the cut-off point), crude and adjusted for sex, age, and BMI.

Associations between muscle composition and all-cause mortality within NAFLD

Investigations were performed using Kaplan-Meier survival curves and Cox regression with adverse muscle composition as well as continuous representations of MFI (%) and muscle volume z-score (SD) as predictors. An unadjusted model (M0) was implemented, followed by models subsequently adjusted for sex, age, and BMI (M1), hand grip strength, physical activity, alcohol consumption and smoking status (M2), and diagnosis of cancer, coronary heart disease, and T2DM before imaging (M3).

Adverse muscle composition and functional performance within NAFLD

The associations of muscle composition (*i.e.*, adverse muscle composition, low muscle volume z-score and high MFI) and functional performance (*i.e.*, hand grip strength, walking pace, falls and stair climbing) with all-cause mortality within NAFLD were investigated using separate crude and combined Cox regressions (including each muscle composition variable with all measures of functional performance as predictors in the same model).

Adverse muscle composition and liver-related outcomes within NAFLD

Liver-related events were identified through electronic healthcare records (accessed September 2021, available from April 1992 to September 2021) and grouped according to the study by Hagström *et al.*²⁸ For this specific investigation, participants

with NAFLD and other liver diseases at/before imaging, alcohol/drug use disorder at/before imaging, and recorded liver-related events at/before imaging were additionally excluded. Details can be found in Table S1. Logistic regressions of a composite variable including all new liver-related events were performed for sex-adjusted MFI and muscle volume z-score.

This research was conducted using the UK Biobank resource, project ID 6569. The study was approved by the North West Multicenter Research Ethics Committee, UK. Written informed consent was obtained before study entry.

Results

Population characteristics

When adjusted for sex, age, and BMI, participants with NAFLD had lower muscle volume z-scores but similar MFI and prevalence of low functional performance compared to their matched controls. The prevalence of T2DM was higher within NAFLD compared to matched controls (14.7% vs. 6.5%), while the prevalence of coronary heart disease was lower (6.5% vs. 7.7%). Further details on population characteristics are presented in Table 1.

During a mean follow-up of 3.9 (SD ±1.4) years, representing 39,450 person-years at risk, 150 out of the 10,138 participants died. Specific causes of death are visualized in Fig. 2. The most common causes of death were from neoplasms (51%) and diseases of the circulatory system (27%). The numbers of death were similar between NAFLD and matched controls across ICD-10 code chapters, and the breakdown in ICD-10 code blocks also showed similar distributions. A complete breakdown can be found in Table S2-S3.

Associations of NAFLD and muscle composition with all-cause mortality

The rate of all-cause mortality was similar comparing NAFLD and matched controls (Fig. 3; number at risk in Fig. S1). Accordingly, the Cox regression showed that neither NAFLD nor liver PDFF were predictive of all-cause mortality (crude hazard ratios [HRs] 0.86, 95% CI 0.62–1.18, $p = 0.350$ and 1.01, 95% CI 0.98–1.04, $p = 0.550$, respectively) (Fig. 3). However, a lower muscle volume z-score was significantly associated with all-cause mortality in both categorical (*low* compared to *normal* muscle volume) and continuous representation, as was a higher MFI. Adverse muscle composition showed the strongest association with all-cause mortality (crude HR 3.05, 95% CI 2.16–4.30, $p < 0.001$).

Table 1. Population characteristics.

	NAFLD	Matched controls	p value	p value (adjusted)
N	5,069	5,069	–	–
Sex (female/male)	46.9%/53.1%	46.9%/53.1%	1.000	–
Age (years)	64.33 (7.47)	64.54 (7.69)	0.152	–
BMI (kg/m ²)	30.26 (4.83)	29.19 (3.75)	<0.001	–
Waist circumference (cm)	98.40 (11.92)	94.48 (10.53)	<0.001	<0.001
Liver PDFF (%)	8.42 (6.24–12.30)	2.70 (1.99–3.62)	<0.001	<0.001
Muscle composition				
Muscle volume z-score (SD)	-0.06 (0.97)	-0.03 (1.01)	0.103	0.022
FFMV, total thigh (L)	10.75 (2.56)	10.69 (2.62)	0.243	0.003
FFMV, left anterior thigh (L)	1.79 (0.49)	1.79 (0.51)	0.744	<0.001
FFMV, right anterior thigh (L)	1.80 (0.50)	1.80 (0.51)	0.680	<0.001
FFMV, left posterior thigh (L)	3.54 (0.80)	3.52 (0.82)	0.129	0.013
FFMV, right posterior thigh (L)	3.59 (0.82)	3.56 (0.83)	0.087	0.022
MFI, mean anterior thigh (%)	8.03 (2.16)	7.82 (2.07)	<0.001	0.938
MFI, sex-adjusted (%)	1.02 (2.03)	0.81 (1.93)	<0.001	0.938
MFI, left anterior thigh (%)	8.16 (2.18)	7.95 (2.11)	<0.001	0.786
MFI, right anterior thigh (%)	7.91 (2.19)	7.71 (2.11)	<0.001	0.758
MFI, left posterior thigh (%)	11.94 (2.63)	11.61 (2.53)	<0.001	0.044
MFI, right posterior thigh (%)	11.74 (2.66)	11.41 (2.54)	<0.001	0.069
Adverse muscle composition (yes/no)	15.2%/84.8%	14.7%/85.3%	0.486	0.487
Low muscle volume (yes/no)	26.2%/73.8%	26.2%/73.8%	1.000	0.751
High MFI (yes/no)	38.8%/61.2%	35.2%/64.8%	<0.001	0.566
Functional performance				
Hand grip strength (kg)	31.31 (10.97)	31.78 (10.95)	0.032	<0.001
Low hand grip strength (yes/no/missing)	8.9%/88.2%/2.9%	8.0%/89.2%/2.7%	0.102	0.093
Slow walking pace (yes/no/missing)	9.3%/90.4%/0.3%	7.8%/92.0%/0.3%	0.006	0.576
>1 fall last year (yes/no/missing)	5.5%/94.3%/0.2%	5.8%/94.1%/0.1%	0.496	0.163
No stair climbing (yes/no/missing)	10.9%/88.6%/0.5%	10.4%/89.1%/0.6%	0.373	0.702
Comorbidity				
Cancer (yes/no/missing)	11.0%/88.5%/0.4%	10.5%/89.4%/0.1%	0.311	0.227
Type 2 diabetes (yes/no/missing)	14.7%/84.4%/0.9%	6.5%/92.9%/0.6%	<0.001	<0.001
Coronary heart disease (yes/no/missing)	6.5%/93.1%/0.4%	7.7%/91.9%/0.4%	0.030	0.010
Lifestyle factors				
Smoking (no/previous/current/missing)	65.7%/31.1%/2.8%/0.4%	64.9%/31.2%/3.5%/0.3%	0.092	0.056
Alcohol consumption (g/day)	6.83 (6.91)	7.43 (7.09)	<0.001	<0.001
Physical activity IPAQ (moderate/low/high/missing)	45.5%/28.2%/26.1%/0.2%	43.5%/23.8%/32.6%/0.2%	<0.001	0.024
Townsend deprivation index	-1.61 (2.87)	-1.71 (2.77)	0.074	0.581

Values are mean (SD) for continuous variables and percentages for binary/categorical variables. p values are from linear/logistic regression or chi-squared test, unadjusted and adjusted for sex, age, BMI. Liver PDFF is given in median (IQR). FFMV, fat-free muscle volume; IPAQ, international physical activity questionnaire; MFI, muscle fat infiltration; NAFLD, non-alcoholic fatty liver disease; PDFF, proton density fat fraction.

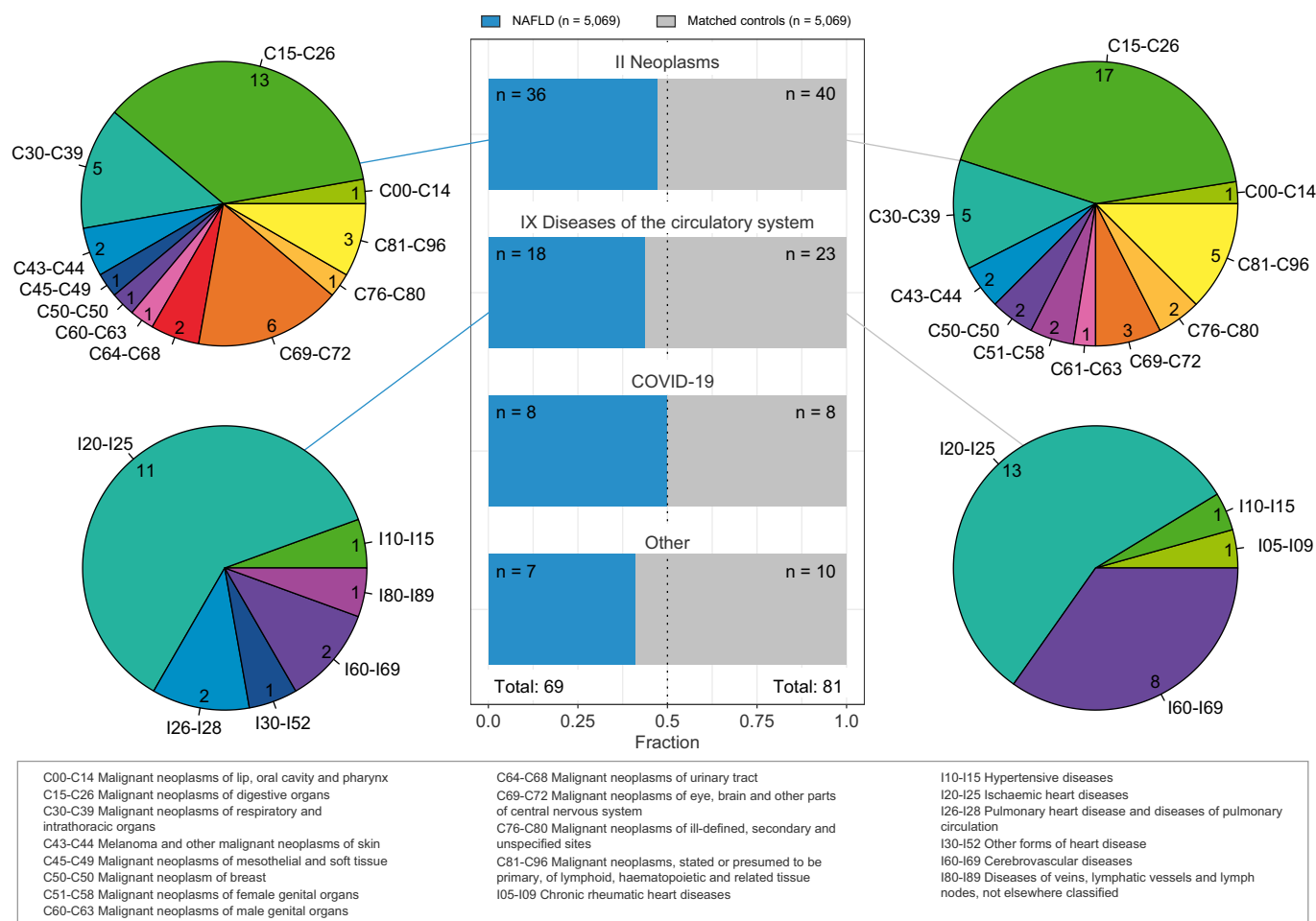


Fig. 2. Breakdown of primary causes of death within NAFLD and sex-, age-, and BMI-matched controls. Middle panel shows distribution of counts between NAFLD and matched controls in ICD-10 chapters with more than 10 deaths recorded. Pie charts show breakdown of ICD-10 blocks within each ICD-10 chapter for NAFLD (left) and matched controls (right) separately. NAFLD, non-alcoholic fatty liver disease.

Sensitivity analysis showed similar results: NAFLD had a non-significant relationship with all-cause mortality in all stratified groups (whole cohort, whole cohort without cancer, women only, men only, younger participants, and older participants) both in crude and sex-, age-, and BMI-adjusted models. Liver PDFF was significant in crude modeling for the whole cohort excluding cancer, and in younger participants (crude HR 1.02, 95% CI 1.00–1.05, $p = 0.024$ and 1.05, 95% CI 1.02–1.08, $p = 0.002$, respectively), but not in adjusted modeling (adjusted HR 1.01, 95% CI 0.98–1.03, $p = 0.559$ and 1.03, 95% CI 0.99–1.07, $p = 0.140$, respectively). All muscle composition variables showed significant associations both in crude and adjusted models except for muscle volume z-score in the adjusted model for younger participants (aHR 0.84, 95% CI 0.70–1.02, $p = 0.073$). Table S4-5 include full reporting of modeling results.

Associations between muscle composition and all-cause mortality within NAFLD

In participants with NAFLD, adverse muscle composition, high MFI, and low muscle volume z-score were significantly associated with all-cause mortality (Fig. 4, Table 2). After adjustment for sex, age, BMI, low hand grip strength, physical activity, smoking status, and alcohol, the association remained significant

for all muscle composition variables. When additionally adjusting for relevant comorbidities (previous cancer, coronary heart disease, and T2DM), adverse muscle composition and muscle volume z-score were attenuated to non-significance ($p = 0.051$ and 0.069, respectively), while MFI remained significantly associated with all-cause mortality ($p = 0.026$). Table S6-S8 include full reporting of modeling results.

Adverse muscle composition and functional performance within NAFLD

Adverse muscle composition showed the strongest association with all-cause mortality (crude HR 2.84, 95% CI 0.35–4.75, $p < 0.001$), including when compared to measures of functional performance (low hand grip strength, slow walking pace, >1 fall last year, and no stair climbing) (Table 3). The only functional tests that reached significance in the crude modeling were low hand grip strength ($p = 0.035$) and slow walking pace ($p = 0.035$). Interestingly, when muscle composition was combined with the functional tests, muscle composition remained significant while associations with the functional tests were attenuated below significance.

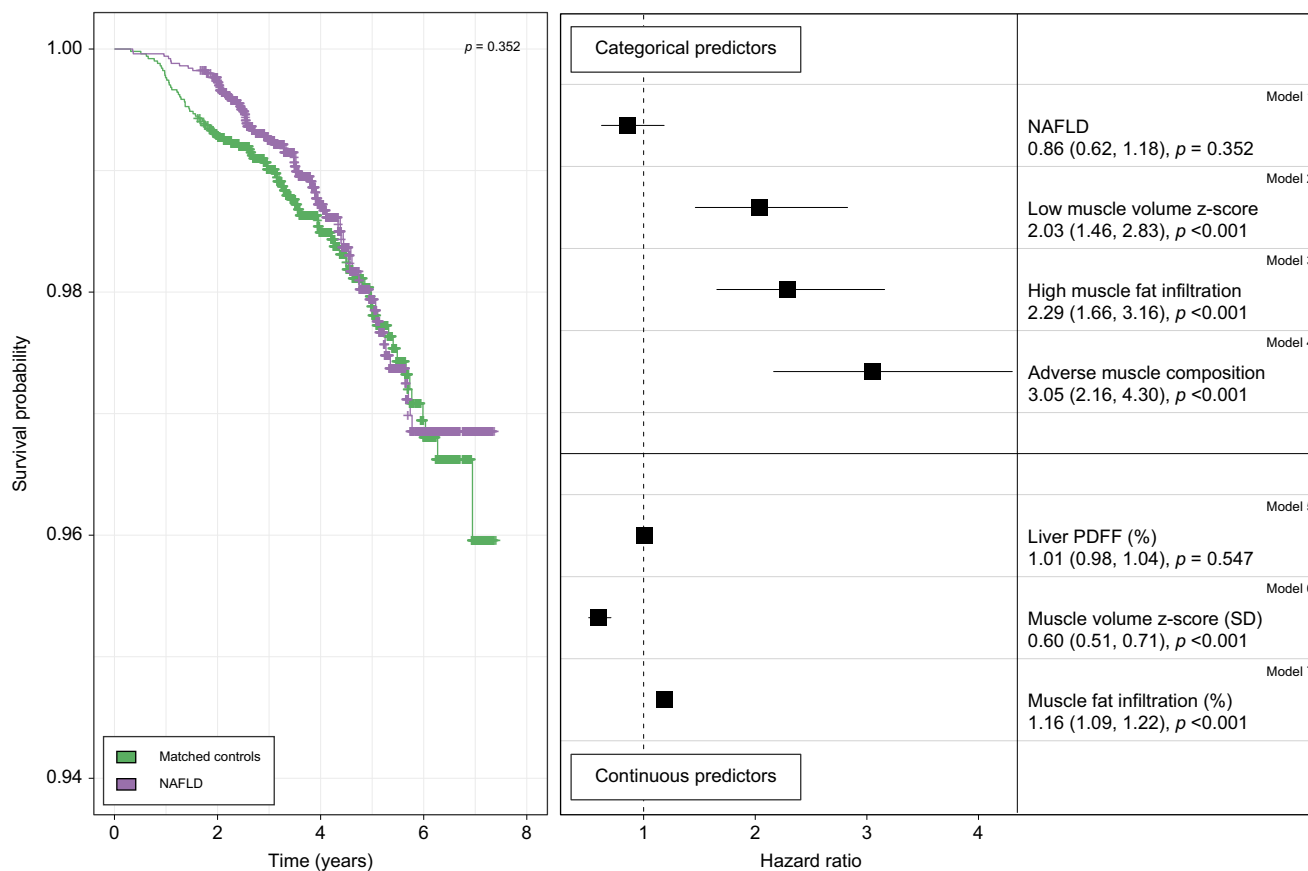


Fig. 3. Associations of all-cause mortality with NAFLD, liver fat, and muscle composition in the matched cohort. Left: Kaplan-Meier survival curves for all-cause mortality comparing NAFLD (purple) and sex-, age- and BMI-matched controls (green). Right: Unadjusted hazard ratios from Cox regression in the matched cohort (NAFLD and matched controls [n = 10,138]) for categorical (yes/no) variables: NAFLD, low muscle volume z-score, high muscle fat infiltration and adverse muscle, and for continuous variables: liver PDFF (%), muscle volume z-score (SD), and muscle fat infiltration (%). NAFLD, non-alcoholic fatty liver disease; PDFF, proton density fat fraction.

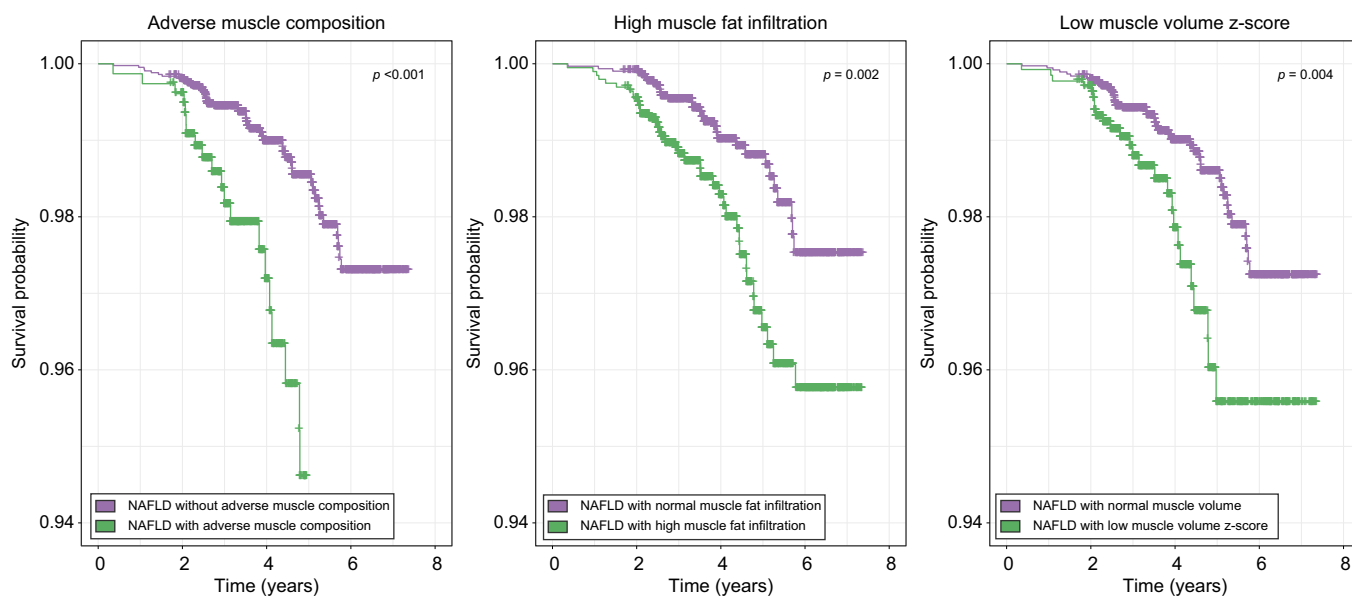


Fig. 4. Kaplan-Meier survival curves comparing participants with NAFLD with/without adverse muscle composition, low muscle volume z-score, and high muscle fat infiltration. p values are from log-rank test. NAFLD, non-alcoholic fatty liver disease.

Table 2. Cox proportional HRs of all-cause mortality within NAFLD for adverse muscle composition, muscle fat infiltration and muscle volume z-score.

	Crude		M1		M2		M3	
	HR	p value	HR	p value	HR	p value	HR	p value
Adverse muscle composition	2.84 (1.70–4.75)	<0.001	1.83 (1.08–3.12)	0.0251	1.82 (1.06–3.14)	0.0302	1.72 (1.00–2.98)	0.0514
Muscle fat infiltration	1.15 (1.07–1.24)	<0.001	1.13 (1.03–1.24)	0.0097	1.14 (1.02–1.26)	0.0171	1.13 (1.01–1.26)	0.0263
Muscle volume z-score	0.70 (0.55–0.88)	0.0028	0.74 (0.56–0.96)	0.0248	0.75 (0.57–0.99)	0.0442	0.77 (0.58–1.02)	0.0688

HRs for adverse muscle composition (yes/no), muscle fat infiltration (%), and muscle volume z-score (SD) including crude HRs and subsequent adjustments for sex, age, BMI (M1); low hand grip strength, smoking status, alcohol (M2); previous cancer, coronary heart disease, type 2 diabetes diagnosis (M3).

Table 3. Cox proportional HRs of all-cause mortality within NAFLD for categorical variables of muscle composition and functional performance.

	Crude		M1		M2		M3	
	HR	p value	HR	p value	HR	p value	HR	p value
Adverse muscle composition (n = 724 [15%])	2.84 (1.70–4.75)	<0.001	2.72 (1.60–4.63)	<0.001				
High muscle fat infiltration (n = 1,910 [39%])	2.10 (1.30–3.38)	0.002			1.83 (1.11–3.00)	0.017		
Low muscle volume z-score (n = 1,289 [26%])	2.02 (1.24–3.29)	0.005					1.95 (1.18–3.22)	0.009
Low hand grip strength (n = 437 [9%])	2.06 (1.05–4.04)	0.035	1.67 (0.83–3.33)	0.148	1.79 (0.90–3.56)	0.097	1.69 (0.84–3.38)	0.141
Slow walking pace (n = 454 [9%])	2.00 (1.05–3.82)	0.035	1.55 (0.78–3.09)	0.208	1.54 (0.77–3.06)	0.22	1.68 (0.85–3.33)	0.136
>1 fall last year (n = 266 [5%])	1.57 (0.68–3.62)	0.294	1.22 (0.51–2.90)	0.660	1.28 (0.54–3.05)	0.576	1.26 (0.52–3.02)	0.607
No stair climbing (n = 540 [11%])	1.13 (0.54–2.36)	0.745	0.97 (0.46–2.06)	0.942	1.01 (0.48–2.12)	0.987	1.02 (0.48–2.14)	0.969

HRs for categorical muscle composition variables (adverse muscle composition, high muscle fat infiltration, low muscle volume z-score) and measures of functional performance including crude HRs and results from multivariable modeling (MV1–MV3) that includes each respective muscle composition variable and all measures of functional performance.

Adverse muscle composition and liver-related outcomes within NAFLD

After excluding participants with NAFLD and other liver diseases at/before imaging or alcohol/drug use disorder at/before imaging, 4,923 participants with NAFLD remained. Of the remaining participants, eight had at least one liver-related event at/before imaging and were excluded. Of the 4,915 remaining participants with NAFLD, 13 (0.26%) had at least one liver-related event post imaging (Table S1). Participants with a liver-related event post imaging showed a higher sex-adjusted MFI (1.01 [2.02] vs. 2.14 [2.58] %, *p* = 0.039). No other significant associations related to muscle composition were observed.

Discussion

In this study, we investigated the relationship of NAFLD and muscle composition with all-cause mortality in the UK Biobank imaging study. The main findings include (1) neither NAFLD nor liver fat was associated with all-cause mortality, and (2) adverse muscle composition was predictive of all-cause mortality in individuals with NAFLD.

Several studies have shown strong associations between fibrosis stage and increased mortality within NAFLD.^{29–31} Similarly, a recent study on >10,000 individuals with biopsy-proven NAFLD showed increased mortality risk by histological stage.³² The study also concluded that simple steatosis significantly increased the risk of death. However, the design of biopsy-based studies is not optimal for investigating if simple steatosis alone drives an increased risk of death as they commonly include controls where there is no indication for biopsy, or where there is no matching on (or adjustment for differences in) overall

adiposity or BMI. Although NAFLD was not confirmed by biopsy, but through MRI (liver PDFF) in our study, the results indicate the opposite conclusion. The link between NAFLD (as identified by elevated alanine aminotransferases) and all-cause mortality has also been investigated in the NHANES III study: An early study showed a significant association with all-cause mortality (adjusted HR 1.038, 95% CI 1.036–1.041).³³ This was however challenged by another study, on the same dataset, published at about the same time.³⁴ In that study, no significant association was observed (adjusted HR 1.20, 95% CI 0.88–1.60) and the authors claimed that the main difference between their studies was statistical approach.^{34,35} A more recent study using the NHANES III data also showed a non-significant association with all-cause mortality.³⁶ In fact, there was a trend towards a negative association with all-cause mortality, and a significant negative association with cardiovascular mortality with full adjustment. In the presence of visceral obesity, low liver fat has also recently been shown to increase the risk of cardiovascular disease in both the Dallas Heart Study and UK Biobank.³⁷ These are important facts to consider as an increasing number of pharmacological therapies are aiming to attenuate histopathological surrogates associated with hepatic fibrosis deposition and progression, including the presence of steatosis. Clearly, there are differences in results when investigating the association between NAFLD and all-cause mortality. Several studies show increased mortality^{30,32,33} while others do not.^{34,36,38} The differences probably lie in selection bias within the NAFLD population studied. In our study, NAFLD stratification was made directly from the UK Biobank imaging participants (community volunteers, not selected owing to abnormal liver function tests), hence, although unknown, the low prevalence of liver disease in our cohort

indicates it mostly constitutes participants with NAFLD without the presence of advanced fibrosis.

Recent literature highlights an increased awareness of the importance of assessing muscle health in earlier stages of liver disease.^{6,39} Further research within NAFLD (or early metabolic/liver disease) investigating the link between muscle health and disease progression and related outcomes is important in evaluating muscle measurements as potential prognostic biomarkers. Multiple studies have reported an association between sarcopenia and NAFLD.^{40–42} However, it has also been shown that common ways of adjusting muscle mass for body size (*i.e.*, through division by height², weight or BMI) do not achieve proper normalization, and that different adjustments result in completely different conclusions about the association between NAFLD and sarcopenia.^{25,43} The use of muscle volume z-score has been shown to effectively remove the association to body size (height, weight, and BMI).²⁵ This is especially important to consider for patient populations, like those with NAFLD, where obesity is more prevalent. In line with our results, a significant association between low muscle mass and all-cause mortality was observed in a recent study investigating the relationship between physical inactivity, NAFLD and sarcopenia.⁴⁴ Our study showed that muscle composition was predictive of all-cause mortality within NAFLD independent of functional performance (measured by hand grip strength) and physical activity level. It is also important to note that MFI was a strong predictor across all models. A combined assessment of both muscle volume and fat infiltration has been shown to effectively stratify the most vulnerable within a wide range of individuals – from the general population to those with NAFLD, chronic kidney disease, the critically ill, and patients with pancreatic cancer^{22,23,45,46} – and recent literature has started to indicate the potential of myosteatosis as a prognostic biomarker for NASH and fibrosis progression.^{47,48} Although too few NAFLD participants in our study had a liver-related event post imaging to draw any conclusions, the significant association with MFI is in line with previous research. Further research, with longer observation times or in higher risk populations, is needed to confirm the potential relationship between MFI and liver disease progression.

The lack of consensus around diagnosis, and how to detect and track sarcopenia, hinders further understanding of how assessment of muscle health could guide preventative care in early liver disease. A wide range of tests for muscle strength and functional performance are used as well as several techniques to measure (and normalize) muscle quantity.^{16,17,49} Due to the modest performance of muscle mass compared to strength or function in predicting adverse outcomes, the sarcopenia field has moved from definitions based on muscle mass alone towards a more pronounced focus on muscle strength and/or functional performance.^{16,50} However, use of measures for muscle strength and/or function alone is not sufficient to diagnose sarcopenia as low muscle strength/function can be caused by, or associated with, a variety of factors besides sarcopenia. This study shows that assessing muscle composition could be relevant in the early stages of liver disease and that measures of muscle strength,

function and frailty do not attenuate the association between muscle composition and all-cause mortality. Quantitative muscle biomarkers with high precision and a strong link to functional performance and outcomes are important for tracking sarcopenia during therapeutic development and allow for rapid detection of disease progression and shortening of trial durations.

The main strengths of this study are the sample size, enabling analysis of a large number of participants fulfilling the NAFLD criteria with sex-, age-, and BMI-matched controls, and the detailed characterization of muscle composition through volumetric MRI. It is, however, important to point out that the NAFLD population studied is likely not the same as the NAFLD population seen in clinical care. The application of the NAFLD criteria to the population volunteering for the UK Biobank imaging study is like screening for NAFLD in this group – they were not biopsied or imaged due to a referral in clinical care. However, measuring liver PDFF in a large population study like the UK Biobank enables investigation of the independent risk of elevated liver fat content, avoiding confounders associated with the strata of patients in clinical care with an indication for biopsy or imaging. In addition, the participants were not followed for an extensive number of years and although previous diseases (cancer, coronary heart disease and T2DM) were included in the analysis, it is unknown whether these diseases preceded muscle composition changes or the other way around. It is important to further explore interactions between metabolic diseases and muscle composition in the pursuit of validating muscle measurements as potential prognostic biomarkers for liver disease. Additionally, as the serum biomarker panel is not yet released for the UK Biobank imaging visit, such data was not included in this study. The biomarker panel data from the baseline assessment (collected years 2006–2010) for adverse muscle composition in NAFLD has been published before.²² Those data showed that adverse muscle composition was associated with a higher Fibrosis-4 and hemoglobin A1c when adjusted for sex, age, liver PDFF, and BMI. Lastly, although hand grip strength was measured according to gold-standard methods, the other variables describing functional performance were self-reported, and the categories for low function (slow walking pace, no stair climbing and >1 fall last year) stratified relatively few participants. Further research is needed to understand how adverse muscle composition assessed by MRI can be introduced into clinical care and if the workflow could benefit from screening with functional tests.

Conclusion

Neither NAFLD nor liver fat content was predictive of all-cause mortality in the UK Biobank imaging study. Adverse muscle composition (the combination of low muscle volume z-score with high muscle fat infiltration) was a strong predictor of all-cause mortality within NAFLD, independent of functional performance. This research further supports the potential of muscle measurements as prognostic biomarkers for liver disease progression.

Abbreviations

FFMV, fat-free muscle volume; HR, hazard ratio; MFI, muscle fat infiltration; NAFLD, non-alcoholic fatty liver disease; PDDF, proton density fat fraction; T2DM, type 2 diabetes mellitus.

Financial support

Funding for image analysis was gratefully received from Pfizer Inc. ALF-grants Region Östergötland.

Conflict of interest

JL is an employee of AMRA Medical AB and reports other from BioMarin and Eli Lilly. AJS reports grants from Intercept, during the conduct of the study; other from Sanyal Bio, Genfit, Indalo, Tiziana, Durect, Exhalenz, Galmed, second genome, Cymabay, Prosciento, Labcorp, Medimmune, Astra Zeneca, Albireo; grants from Merck, Bristol Myers, Boehringer Ingelhiem, Immuron, Malinkrodt, Cumberland, Sequana; grants and personal fees from Novartis, Gilead, Conatus, Echosens; personal fees from Pfizer, Lilly, Novo Nordisk, Sanofi, Tern, Hemoshear, Glympse, Birdrock, Blade, Teva, Artham, Salix, NASH pharmaceuticals, outside the submitted work. ODL is an employee of and shareholder in AMRA Medical AB and reports other from Eli Lilly. ME is a member of the advisory board at AMRA Medical AB.

Please refer to the accompanying ICMJE disclosure forms for further details.

Authors' contributions

Study concept and design: JL, ODL, ME; analysis and interpretation of data: JL, PN, ODL, ME; drafting of the manuscript: JL; critical revision of the manuscript for important intellectual content: all authors; statistical analysis: JL.

Data availability statement

This research was conducted using the UK Biobank resource, project ID 6569. UK Biobank data are available through the procedure described at <http://www.ukbiobank.ac.uk/using-the-resource/>.

Supplementary data

Supplementary data to this article can be found online at <https://doi.org/10.1016/j.jhepr.2022.100663>.

References

[1] Kechagias S, Nasr P, Blondahl J, Ekstedt M. Established and emerging factors affecting the progression of nonalcoholic fatty liver disease. *Metabolism* 2020;111S:154183. <https://doi.org/10.1016/j.metabol.2020.154183>.

[2] Ekstedt M, Nasr P, Kechagias S. Natural history of NAFLD/NASH. *Curr Hepatol Rep* 2017;16(4):391–397. <https://doi.org/10.1007/s11901-017-0378-2>.

[3] Eslam M, Sanyal AJ, George J. International consensus panel. International consensus panel. MAFLD: a consensus-driven proposed nomenclature for metabolic associated fatty liver disease. *Gastroenterology* 2020;158(7):1999–2014.e1. <https://doi.org/10.1053/j.gastro.2019.11.312>.

[4] Volpi E, Nazemi R, Fujita S. Muscle tissue changes with aging. *Curr Opin Clin Nutr Metab Care* 2004;7(4):405–410. <https://doi.org/10.1097/01.mco.0000134362.76653.b2>.

[5] Mesinovic J, Zengin A, De Courten B, Ebeling PR, Scott D. Sarcopenia and type 2 diabetes mellitus: a bidirectional relationship. *Diabetes Metab Syndr Obes* 2019;12:1057–1072. <https://doi.org/10.2147/DMSO.S186600>.

[6] Chakravarthy MV, Siddiqui MS, Forsgren MF, Sanyal AJ. Harnessing muscle–liver crosstalk to treat nonalcoholic steatohepatitis. *Front Endocrinol (Lausanne)* 2020;11:592373. <https://doi.org/10.3389/fendo.2020.592373>.

[7] Fearon K, Strasser S, Anker SD, Bosaeus I, Bruera E, Fainsinger RL, et al. Definition and classification of cancer cachexia: an international consensus. *Lancet Oncol* 2011;12(5):489–495. [https://doi.org/10.1016/S1470-2045\(10\)70218-7](https://doi.org/10.1016/S1470-2045(10)70218-7).

[8] Dasarthy S. Etiology and management of muscle wasting in chronic liver disease. *Curr Opin Gastroenterol* 2016;32(3):159–165. <https://doi.org/10.1097/MOG.0000000000000261>.

[9] Mak RH, Iikizler AT, Kovesdy CP, Raj DS, Stenvinkel P, Kalantar-Zadeh K. Wasting in chronic kidney disease. *J Cachexia Sarcopenia Muscle* 2011;2(1):9–25. <https://doi.org/10.1007/s13539-011-0019-5>.

[10] Montano-Loza AJ, Angulo P, Meza-Junco J, Prado CMM, Sawyer MB, Beaumont C, et al. Sarcopenic obesity and myosteatosis are associated with higher mortality in patients with cirrhosis. *J Cachexia Sarcopenia Muscle* 2016;7(2):126–135. <https://doi.org/10.1002/jcsm.12039>.

[11] Carey EJ, Lai JC, Sonnenday C, Tapper EB, Tandon P, Duarte-Rojo A, et al. A North American expert opinion statement on sarcopenia in liver transplantation. *Hepatology* 2019;70(5):1816–1829. <https://doi.org/10.1002/hep.30828>.

[12] Ebadi M, Bhanji RA, Mazurak VC, Montano-Loza AJ. Sarcopenia in cirrhosis: from pathogenesis to interventions. *J Gastroenterol* 2019;54(10):845–859. <https://doi.org/10.1007/s00535-019-01605-6>.

[13] Englesbe MJ, Patel SP, He K, Lynch RJ, Schaubel DE, Harbaugh C, et al. Sarcopenia and mortality after liver transplantation. *J Am Coll Surg* 2010;211(2):271–278. <https://doi.org/10.1016/j.jamcollsurg.2010.03.039>.

[14] Mijnarends DM, Luiking YC, Halfens RJG, Evers ELA, Lenaerts ELA, Verlaan S, et al. Muscle, health and costs: a glance at their relationship. *J Nutr Health Aging* 2018;22:766–773. <https://doi.org/10.1007/s12603-018-1058-9>.

[15] Cawthon PM, Lui LY, Taylor BC, McCulloch CE, Cauley JA, Lapidus J, et al. Clinical definitions of sarcopenia and risk of hospitalization in community-dwelling older men: the osteoporotic fractures in men study. *J Gerontol A Biol Sci Med Sci* 2017;72:1383–1389. <https://doi.org/10.1093/gerona/glw327>.

[16] Cruz-Jentoft AJ, Bahat G, Bauer J, Boirie Y, Bruyère O, Cederholm CT, et al. Writing group for the European working group on sarcopenia in older people 2 (EWGSOP2), and the extended group for EWGSOP2. Sarcopenia: revised European consensus on definition and diagnosis. *Age Ageing* 2019;48:601. <https://doi.org/10.1093/ageing/afz046>.

[17] Studenski SA, Peters KW, Alley DE, Cawthon PM, McLean RR, Harris TB, et al. The FNIH sarcopenia project: rationale, study description, conference recommendations, and final estimates. *J Gerontol A Biol Sci Med Sci* 2014;69:547–558. <https://doi.org/10.1093/gerona/glu010>.

[18] Linge J, Borga M, West J, Tuthill T, Miller MR, Dumitriu A, et al. Body composition profiling in the UK Biobank imaging study. *Obesity (Silver Spring)* 2018;26:1785–1795. <https://doi.org/10.1002/oby.22210>.

[19] Karlsson A, Rosander J, Romu T, Tallberg J, Grönqvist A, Borga M, et al. Automatic and quantitative assessment of regional muscle volume by multi-atlas segmentation using whole-body water-fat MRI. *J Magn Reson Imaging* 2015;41:1558–1569. <https://doi.org/10.1002/jmri.24726>.

[20] West J, Romu T, Thorell S, Lindblom H, Berin E, Spetz Holm AC, et al. Precision of MRI-based body composition measurements of post-menopausal women. *PLoS One* 2018;13:e0192495. <https://doi.org/10.1371/journal.pone.0192495>.

[21] Borga M, Ahlgren A, Romu T, Widholm P, Dahlqvist Leinhard O, West J. Reproducibility and repeatability of MRI-based body composition analysis. *Magn Reson Med* 2020;84:3146–3156. <https://doi.org/10.1002/mrm.28360>.

[22] Linge J, Ekstedt M, Dahlqvist Leinhard O. Adverse muscle composition is linked to poor functional performance and metabolic comorbidities in NAFLD. *JHEP Rep* 2020;3:100197. <https://doi.org/10.1016/j.jhepr.2020.100197>.

[23] Linge J, Petersson M, Forsgren MF, Sanyal AJ, Dahlqvist Leinhard O. Adverse muscle composition predicts all-cause mortality in the UK Biobank imaging study. *J Cachexia Sarcopenia Muscle* 2021. <https://doi.org/10.1002/jcsm.12834>.

[24] UK Biobank imaging study. Accessed April 22, 2022. URL: <https://www.ukbiobank.ac.uk/explore-your-participation/contribute-further/imaging-study>.

[25] Linge J, Heymsfield SB, Dahlqvist Leinhard O. On the definition of sarcopenia in the presence of aging and obesity—initial results from UK Biobank. *J Gerontol A Biol Sci Med Sci* 2020;75:1309–1316. <https://doi.org/10.1093/gerona/glz229>.

[26] Leoni S, Tovoli F, Napoli L, Serio I, Ferri S, Bolondi L. Current guidelines for the management of non-alcoholic fatty liver disease: a systematic review with comparative analysis. *World J Gastroenterol* 2018;24:3361–3373. <https://doi.org/10.3748/wjg.v24.i30.3361>.

[27] Szczepaniak LS, Nurenberg P, Leonard D, Browning JD, Reingold JS, Grundy S, et al. Magnetic resonance spectroscopy to measure hepatic triglyceride content: prevalence of hepatic steatosis in the general population. *Am J Physiol Endocrinol Metab* 2005;288:E462–E468. <https://doi.org/10.1152/ajpendo.00064.2004>.

- [28] Hagström H, Adams LA, Allen AM, Byrne CD, Chang Y, Grønbaek H, et al. Administrative coding in electronic health care record-based research of NAFLD: an expert panel consensus statement. *Hepatology* 2021;74(1):474–482. <https://doi.org/10.1002/hep.31726>.
- [29] Dulai PS, Singh S, Patel J, Soni M, Prokop LJ, Younossi Z, et al. Increased risk of mortality by fibrosis stage in non-alcoholic fatty liver disease: systematic review and meta-analysis. *Hepatology* 2017;65(5):1557–1565. <https://doi.org/10.1002/hep.29085>.
- [30] Ekstedt M, Hagström H, Nasr P, Fredrikson M, Stål P, Kechagias S, et al. Fibrosis stage is the strongest predictor for disease-specific mortality in NAFLD after up to 33 years of follow-up. *Hepatology* 2015;61(5):1547–1554. <https://doi.org/10.1002/hep.27368>.
- [31] Angulo P, Kleiner DE, Dam-Larsen S, Adams LA, Bjornsson ES, Charatcharoenwitthaya P, et al. Liver fibrosis, but No other histologic features, is associated with long-term outcomes of patients with non-alcoholic fatty liver disease. *Gastroenterology* 2015;149(2):389–397.e10. <https://doi.org/10.1053/j.gastro.2015.04.043>.
- [32] Simon TG, Roelstraete B, Khalili H, Hagström H, Ludvigsson JF. Mortality in biopsy-confirmed non-alcoholic fatty liver disease: results from a nationwide cohort. *Gut* 2021;70(7):1375–1382. <https://doi.org/10.1136/gutjnl-2020-322786>.
- [33] Ong JP, Pitts A, Younossi ZB. Increased overall mortality and liver-related mortality in non-alcoholic fatty liver disease. *J Hepatol* 2008 Oct;49(4):608–612. <https://doi.org/10.1016/j.jhep.2008.06.018>.
- [34] Ruhl CE, Everhart JE. Elevated serum alanine aminotransferase and gamma-glutamyltransferase and mortality in the United States population. *Gastroenterology* 2009 Feb;136(2):477–485.e11. <https://doi.org/10.1053/j.gastro.2008.10.052>.
- [35] Ruhl CE, Everhart JE. Non-alcoholic fatty liver disease (NAFLD) and mortality. *J Hepatol* 2009 Sep;51(3):593. <https://doi.org/10.1016/j.jhep.2009.05.010>. author reply 594–5.
- [36] Huang Q, Zou X, Wen X, Zhou X, Ji L. NAFLD or MAFLD: which has closer association with all-cause and cause-specific mortality?—results from NHANES III. *Front Med (Lausanne)* 2021;8:693507. <https://doi.org/10.3389/fmed.2021.693507>.
- [37] Tejani S, McCoy C, Ayers CR, Powell-Wiley TM, Després JP, Linge J, et al. Cardiometabolic health outcomes associated with discordant visceral and liver fat phenotypes: insights from the Dallas heart study and UK Biobank. *Mayo Clin Proc* 2022 Feb;97(2):225–237. <https://doi.org/10.1016/j.mayocp.2021.08.021>.
- [38] Hagström H, Nasr P, Ekstedt M, Hammar U, Stål P, Hultcrantz R, et al. Fibrosis stage but not NASH predicts mortality and time to development of severe liver disease in biopsy-proven NAFLD. *J Hepatol* 2017 Dec;67(6):1265–1273. <https://doi.org/10.1016/j.jhep.2017.07.027>.
- [39] Nachit M, Leclercq IA. Emerging awareness on the importance of skeletal muscle in liver diseases: time to dig deeper into mechanisms! *Clin Sci (Lond)* 2019;133(3):465–481. <https://doi.org/10.1042/CS20180421>. 12.
- [40] De Fré CH, De Fré MA, Kwanten WJ, Op de Beeck BJ, Van Gaal LF, Francque SM. Sarcopenia in patients with non-alcoholic fatty liver disease: is it a clinically significant entity? *Obes Rev* 2019 Feb;20(2):353–363. <https://doi.org/10.1111/obr.12776>.
- [41] Lee YH, Kim SU, Song K, Park JY, Kim DY, Ahn SH, et al. Sarcopenia is associated with significant liver fibrosis independently of obesity and insulin resistance in nonalcoholic fatty liver disease: nationwide surveys (KNHANES 2008–2011). *Hepatology* 2016 Mar;63(3):776–786. <https://doi.org/10.1002/hep.28376>.
- [42] Yu R, Shi Q, Liu L, Chen L. Relationship of sarcopenia with steatohepatitis and advanced liver fibrosis in non-alcoholic fatty liver disease: a meta-analysis. *BMC Gastroenterol* 2018 Apr 19;18(1):51. <https://doi.org/10.1186/s12876-018-0776-0>.
- [43] Peng TC, Wu LW, Chen WL, Liaw FY, Chang YW, Kao TW. Nonalcoholic fatty liver disease and sarcopenia in a Western population (NHANES III): the importance of sarcopenia definition. *Clin Nutr* 2019 Feb;38(1):422–428. <https://doi.org/10.1016/j.clnu.2017.11.021>.
- [44] Golabi P, Berber L, Paik JM, Deshpande R, de Avila L, Younossi ZM. Contribution of sarcopenia and physical inactivity to mortality in people with non-alcoholic fatty liver disease. *JHEP Rep* 2020 Aug 15;2(6):100171. <https://doi.org/10.1016/j.jhepr.2020.100171>.
- [45] Loosen SH, Schulze-Hagen M, Püngel T, Bündgens L, Wirtz T, Kather JN, et al. Skeletal muscle composition predicts outcome in critically ill patients. *Crit Care Explor* 2020;2(8):e0171. <https://doi.org/10.1097/CCE.0000000000000171>.
- [46] Stretch C, Aubin JM, Mickiewicz B, Leugner D, Al-Manasra T, Tobola E, et al. Sarcopenia and myosteatosis are accompanied by distinct biological profiles in patients with pancreatic and periampullary adenocarcinomas. *PLoS One* 2018;13(5):e0196235. <https://doi.org/10.1371/journal.pone.0196235>.
- [47] Nachit M, Kwanten WJ, Thissen JP, Op de Beeck B, Van Gaal L, Vonghia L, et al. Muscle fat content is strongly associated with NASH: a longitudinal study in patients with morbid obesity. *J Hepatol* 2021;75(2):292–301. <https://doi.org/10.1016/j.jhep.2021.02.037>.
- [48] Hsieh YC, Joo SK, Koo BK, Lin HC, Lee DH, Chang MS, et al. Innovative Target Exploration of NAFLD (ITEN) Consortium. Myosteatosis, but not sarcopenia, predisposes NAFLD subjects to early steatohepatitis and fibrosis progression. *Clin Gastroenterol Hepatol* 2022. <https://doi.org/10.1016/j.cgh.2022.01.020>. S1542-S3565(22)74-X.
- [49] Chen LK, Woo J, Assantachai P, Auyeung TW, Chou MY, Iijima K, et al. Asian working group for sarcopenia: 2019 consensus update on sarcopenia diagnosis and treatment. *J Am Med Dir Assoc* 2020;21(3):300–307.e2. <https://doi.org/10.1016/j.jamda.2019.12.012>.
- [50] Newman AB, Kupelian V, Visser M, Simonsick EM, Goodpaster BH, Kritchevsky SB, et al. Strength, but not muscle mass, is associated with mortality in the health, aging and body composition study cohort. *J Gerontol A Biol Sci Med Sci* 2006;61(1):72–77. <https://doi.org/10.1093/gerona/61.1.72>.

Journal of Hepatology, Volume 5

Supplemental information

**Adverse muscle composition is a significant risk factor for
all-cause mortality in NAFLD**

Jennifer Linge, Patrik Nasr, Arun J. Sanyal, Olof Dahlqvist Leinhard, and Mattias Ekstedt

Adverse muscle composition is a significant risk factor for all-cause mortality in NAFLD

Jennifer Linge, Patrik Nasr, Arun J Sanyal, Olof Dahlqvist Leinhard, Mattias Ekstedt

Table of contents

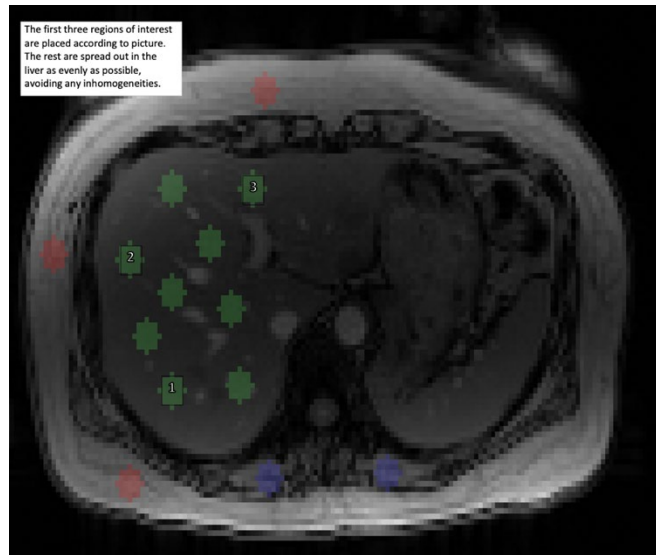
Supplementary materials and methods	2
Supplementary tables	6
Supplementary figures.....	14
Supplementary references.....	16

Supplementary materials and methods

Section S1. MRI scanning protocol, image analysis and UK Biobank field information

The subjects were scanned in supine position in a Siemens MAGNETOM Aera 1.5 T MRI scanner (Siemens, Erlangen, Germany) using the dual-echo Dixon Vibe protocol covering neck to knees. Common parameters for all slabs were: flip angle=10°, TR=6.69 ms, TE=2.39/4.77 ms, and bandwidth=440 Hz. The first slab, over the neck, consisted of 64 slices, voxel size 2.23×2.23×3 mm³, and 224×168 matrix; slabs two to four were acquired during 17-second expiration breath-holds with 44 slices, voxel size 2.23×2.23×4.5 mm³, and 224×174 matrix; slab five consisted of 72 slices, voxel size 2.23×2.23×3.5 mm³, and 224×162 matrix; slab six of 64 slices, voxel size 2.23×2.23×4 mm³, and 224×156 matrix.

For liver proton density fat fraction (PDFF) quantification, nine regions of interest (ROI) were placed while avoiding major vessels and bile ducts (see figure to the right). The liver water, fat and T2* of each ROI were computed by magnitude-based chemical shift technique¹ with a 6-peak lipid model². To correct for T1-bias, caused by differences in water and fat T1, a correction factor was applied to the water signal. The correction factor was computed using the body Dixon images of the first 3,000 scanned UK Biobank participants as reference. The liver ROIs were transferred to, and compared with, the fat Dixon images intensities, which were calibrated using the adipose tissue as an intensity reference^{3,4} and corrected using the liver T2*, a process which results in T1 insensitive fat measurements⁵.



For whole body measurements, the image analysis consisted of (1) image calibration, (2) fusion of image stacks, (3) image segmentation, and (4) quantification of fat and muscle volumes^{4,6-9} and included manual quality control by an analysis engineer. Muscle volumes were calculated as fat-tissue free muscle volumes⁴. MFI was calculated as the average T2*-corrected fat value and converted to proton density fat fraction (PDFF)².

UK Biobank field information

Liver PDFF, using data from UK Biobank field ID's 22436 ('10P Liver PDFF (proton density fat fraction)') and 24352 (FR liver PDFF mean). Data from field 22436 was used where data was missing for field 24352.

Fat-free muscle volume, using data from UK Biobank field ID's 22409 ('Total thigh fat-free muscle volume'), 22403 ('Anterior thigh fat-free muscle volume (right)'), 22404 ('Posterior thigh fat-free muscle volume (right)'), 22405 ('Anterior thigh fat-free muscle volume (left)'), and 22406 ('Posterior thigh fat-free muscle volume (left)').

Muscle fat infiltration, using data from UK Biobank field ID's 24353 ('Anterior thigh muscle fat infiltration (MFI) (left)') and 24354 ('Anterior thigh muscle fat infiltration (MFI) (right)').

Section S2. Variable definitions

Cancer, any type of cancer reported in an interview with a trained nurse.

Coronary heart disease (CHD), defined by ICD-10 codes I20–I25, Z95.1. Controls excluded participants with these codes and those with self-reported history of heart attack, angina, or other heart/cardiac problems (N = 82 excluded).

Type 2 diabetes (T2D), diagnosed by a doctor and with age at diagnosis above 30 years. Controls excluded type 1 diabetes and/or gestational diabetes (N = 39 excluded).

Smoking, assessed through touchscreen questionnaire categorized into 'Prefer not to answer', 'Never', 'Previous', and 'Current'. Data-Field: 20116

Alcohol consumption, assessed through touchscreen questionnaires about frequency of intake and average intake of specific beverages ('red wine', 'champagne plus white wine', 'beer plus cider', 'spirits', 'fortified wines', and 'other alcoholic drinks'). Number of alcohol units per week was calculated using the Drinkaware definition (Drinkaware: <https://www.drinkaware.co.uk/facts/alcoholic-drinks-and-units/what-is-an-alcohol-unit>, Accessed April 2022).

Physical activity calculated according to the guidelines for data processing and analysis of IPAQ. The categorical score was calculated based on the protocol for IPAQ Short Form.

Touchscreen questionnaire screenshot for falls, walking pace, and stair climbing:

In the last year have you had any falls?	How would you describe your usual walking pace?
No falls Only one fall More than one fall Prefer not to answer	Slow pace Steady average pace Brisk pace None of the above Prefer not to answer

Navigation icons: Back, Info, Help, Next (for both screens).

At home, during the last 4 weeks, about how many times a DAY do you climb a flight of stairs? (approx 10 steps)

- None
- 1-5 times a day
- 6-10 times a day
- 11-15 times a day
- 16-20 times a day
- More than 20 times a day
- Do not know
- Prefer not to answer



Back



Info



Help



Next

Section S3. Protocol description for recording of hand grip strength in UK Biobank (UK Biobank Field IDs 46, 47)

(Cited. <https://biobank.ctsu.ox.ac.uk/crystal/crystal/docs/Gripstrength.pdf>, Accessed June 2022)

1. The staff member explains that the first measure will be of grip strength (indicating the Jamar dynamometer device to be used) and that strength in both hands will be measured in turn.
2. The participant is asked to sit upright in a chair and place their forearms on armrests. With dynamometer handle set to the second incremental slot the participant is asked to hold it first in their right hand. For participants with very large hands the handle is moved to the third slot.
3. The participant's elbow of the arm holding the dynamometer is against their side and bent to a 90° angle so that their forearm is pointing forwards with their thumb uppermost. Their wrist is straight so that their hand is either pointing forwards or bent slightly outwards.
4. The staff member supports the dynamometer lightly with one hand and rotates the red peak-hold needle anti-clockwise to zero. They explain to the participant that the adjustable handle of the dynamometer does not move while they are gripping it, but it will measure the strength of their grip. The participant is asked to squeeze the handle of the dynamometer as strongly as they can for about 3 seconds. They are given encouragement while doing so.
5. After 3 seconds the participant is asked to stop, the dynamometer is taken from them and the maximum hand grip strength is read in whole kilogram force units as indicated on the outer aspect of the dial by the red peak-hold needle. This value is entered into the computer (see below).

Section S4. R packages used for statistical analysis and visualizations

survival
survimer
forestmodel
ggplot2
table1
rtf

Supplementary tables

Category	Diagnosis	ICD-10_codes	Excluded at/before imaging	Liver-related events post imaging
Other liver diseases at/before baseline	ALD	K70	YES	Not included
	Viral hepatitis	B16, B17, B18, B19		
	Autoimmune liver disease (AIH, PBC, PSC)	K830, K743, K754		
	Hemochromatosis	E831		
	Wilson's disease	E830		
	Alpha-1-antitrypsin deficiency	E880		
	Budd-Chiari syndrome	I820, K765		
	Chronic hepatitis, unspecified	K739, K732		
Secondary or unspecified biliary cirrhosis	K744, K745			
Alcohol/drug use disorder at/before baseline	Codes associated with alcohol use disorder	F10	YES	Not included
	Codes associated with somatic consequences of alcohol (except ALD)	E244, G621, I426, K292, G312, G721, K852, K860, T510, T519, Y573, X65, Z502, Z714, Z721		
	Codes associated with drug use disorders except nicotine/caffeine	F11, F12, F13, F14, F16, F18, F19		
Compensated cirrhosis	Cirrhosis, compensated	K746	YES	4
	Esophageal varices, not bleeding	I859, I982		3
	Gastric varices, not bleeding	I864		0
	Esophageal varices, bleeding	I850, I983		0
	Ascites	R18		4
	HE	K746+lactulose		0
	Hepatorenal syndrome	K767		0
	Portal hypertension	K766		3
Liver transplantation	LT status	Z944	YES	1
Liver cancer outcomes	HCC	C220	YES	3
	Liver cancer, unspecified	C229		1
Unspecified codes that might be relevant for some studies	Chronic or unspecified liver failure	K721, K729	YES	1
	Acute or subacute liver failure	K720		0
	Portal vein thrombosis	I819, K751		0
	Hepatic fibrosis or sclerosis or fibrosis with sclerosis	K740, K741, K742		2
Total number of unique participants with liver related events post imaging:				13

Table S1 Description of ICD-10 codes used to investigate liver related outcomes in participants with non-alcoholic fatty liver disease (NAFLD).

ICD-10 code chapter	Total	NAFLD	Matched controls
II Neoplasms	76	36	40
IX Diseases of the circulatory system	41	18	23
Covid-19	16	8	8
X Diseases of the respiratory system	6	1	5
XX External causes of morbidity and mortality	4	1	3
VI Diseases of the nervous system	2	1	1
XI Diseases of the digestive system	2	1	1
I Certain infectious and parasitic diseases	1	1	0
III Diseases of the blood and blood-forming organs and certain disorders involving the immune mechanism	1	1	0
IV Endocrine, nutritional, and metabolic diseases	1	1	0
Total	150	69	81

Table S2 Specific primary causes of death in the matched dataset (N=10,138) broken down between NAFLD and sex-, age-, and BMI-matched controls on ICD-10 code chapter level.

ICD-10 code block	Total	NAFLD	Matched controls
C15-C26 Malignant neoplasms of digestive organs	30	13	17
I20-I25 Ischaemic heart diseases	24	11	13
Covid-19	16	8	8
C30- C39 Malignant neoplasms of respiratory and intrathoracic organs	10	5	5
I60-I69 Cerebrovascular diseases	10	2	8
C69-C72 Malignant neoplasms of eye, brain, and other parts of central nervous system	9	6	3
C81-C96 Malignant neoplasms, stated or presumed to be primary, of lymphoid, haematopoietic, and related tissue	8	3	5
C43-C44 Melanoma and other malignant neoplasms of skin	4	2	2
C50-C50 Malignant neoplasm of breast	3	1	2
C76-C80 Malignant neoplasms of ill-defined, secondary, and unspecified sites	3	1	2
J40-J47 Chronic lower respiratory diseases	3	0	3
J80-J84 Other respiratory diseases principally affecting the interstitium	3	1	2
C00-C14 Malignant neoplasms of lip, oral cavity, and pharynx	2	1	1
C51-C58 Malignant neoplasms of female genital organs	2	0	2
C60-C63 Malignant neoplasms of male genital organs	2	1	1
C64-C68 Malignant neoplasms of urinary tract	2	2	0
I10-I15 Hypertensive diseases	2	1	1
I26-I28 Pulmonary heart disease and diseases of pulmonary circulation	2	2	0
K70-K77 Diseases of liver	2	1	1
X60-X84 Intentional self-harm	2	0	2
A30-A49 Other bacterial diseases	1	1	0
C45-C49 Malignant neoplasms of mesothelial and soft tissue	1	1	0
D80-D89 Certain disorders involving the immune mechanism	1	1	0
E70-E90 Metabolic disorders	1	1	0
G10-G14 Systemic atrophies primarily affecting the central nervous system	1	1	0
G70-G73 Diseases of myoneural junction and muscle	1	0	1

I05-I09 Chronic rheumatic heart diseases	1	0	1
I30-I52 Other forms of heart disease	1	1	0
I80-I89 Diseases of veins, lymphatic vessels, and lymph nodes, not elsewhere classified	1	1	0
W00-W19 Falls	1	1	0
Y83-Y84 Surgical and other medical procedures as the cause of abnormal reaction of the patient, or of later complication, without mention of misadventure at the time of the procedure	1	0	1

Table S3 Specific primary causes of death in the matched dataset (N=10,138) broken down between NAFLD and sex-, age-, and BMI-matched controls on ICD-10 code block level.

Variable	Unit	Whole cohort (N=40,174)			Excluding cancer (N=35,628)			Women (N=20,823)			Men (N=19,351)			Younger participants (N=20,084)			Older participants (N=20,090)		
		cHR	95% CI	p-value	cHR	95% CI	p-value	cHR	95% CI	p-value	cHR	95% CI	p-value	cHR	95% CI	p-value	cHR	95% CI	p-value
NAFLD	no	Ref			Ref			Ref			Ref			Ref			Ref		
	yes	1.07	[0.83; 1.37]	0.621	1.08	[0.81; 1.43]	0.609	0.94	[0.59; 1.50]	0.796	1.05	[0.78; 1.42]	0.728	0.95	[0.56; 1.64]	0.864	1.08	[0.81; 1.43]	0.590
Low muscle volume z-score	no	Ref			Ref			Ref			Ref			Ref			Ref		
	yes	2.14	[1.80; 2.55]	<0.001	2.11	[1.73; 2.58]	<0.001	1.88	[1.40; 2.54]	<0.001	2.30	[1.85; 2.86]	<0.001	1.64	[1.09; 2.46]	0.017	1.79	[1.47; 2.18]	<0.001
High muscle fat infiltration (MFI)	no	Ref			Ref			Ref			Ref			Ref			Ref		
	yes	2.14	[1.80; 2.55]	<0.001	2.60	[2.13; 3.16]	<0.001	2.01	[1.50; 2.69]	<0.001	2.62	[2.11; 3.24]	<0.001	2.11	[1.44; 3.09]	<0.001	1.83	[1.50; 2.22]	<0.001
Adverse muscle composition	no	Ref			Ref			Ref			Ref			Ref			Ref		
	yes	3.11	[2.55; 3.80]	<0.001	3.14	[2.50; 3.95]	<0.001	2.80	[1.98; 3.96]	<0.001	3.21	[2.52; 4.09]	<0.001	2.98	[1.78; 4.96]	<0.001	2.30	[1.85; 2.85]	<0.001
Liver PDFF	%	1.02	[1.00; 1.03]	0.098	1.02	[1.00; 1.04]	0.024	1.02	[0.99; 1.05]	0.122	1.00	[0.97; 1.02]	0.908	1.05	[1.02; 1.08]	0.002	1.00	[0.98; 1.02]	0.980
Muscle volume z-score	SD	0.63	[0.58; 0.69]	<0.001	0.63	[0.57; 0.70]	<0.001	0.71	[0.61; 0.83]	<0.001	0.60	[0.54; 0.67]	<0.001	0.79	[0.66; 0.95]	0.012	0.69	[0.62; 0.77]	<0.001
Muscle fat infiltration	%	1.18	[1.14; 1.22]	<0.001	1.19	[1.15; 1.24]	<0.001	1.21	[1.14; 1.27]	<0.001	1.23	[1.19; 1.28]	<0.001	1.20	[1.11; 1.29]	<0.001	1.11	[1.07; 1.16]	<0.001

Table S4 Cox proportional-hazard ratios (**crude**) of all-cause mortality for different strata of the UK Biobank data: (1) whole cohort, (2) whole cohort excluding participants with a previous cancer 1diagnosis at imaging, (3) women only, (4) men only, (5) younger participants (below median age of 64.7 years), and (6) older participants (above median age of 64.7 years). For categorical variables: non-alcoholic fatty liver disease (NAFLD) [yes/no], low muscle volume z-score [yes/no], high muscle fat infiltration [yes/no], adverse muscle composition (MC) and continuous variables: liver proton density fat fraction (PDFF) [%], muscle volume z-score [SD], muscle fat infiltration (MFI) [%]. CI, confidence interval; Ref, reference.

Variable	Unit	Whole cohort (N=40,174) Adjusted: sex, age, BMI			Excluding cancer (N=35,628) Adjusted: sex, age, BMI			Women (N=20,823) Adjusted: age, BMI			Men (N=19,351) Adjusted: age, BMI			Younger participants (N=20,084) Adjusted: sex, age, BMI			Older participants (N=20,090) Adjusted: sex, age, BMI		
		aHR	95% CI	p- value	aHR	95% CI	p- value	aHR	95% CI	p-value	aHR	95% CI	p-value	aHR	95% CI	p-value	aHR	95% CI	p- value
NAFLD	no	Ref			Ref			Ref			Ref			Ref			Ref		
	yes	0.93	[0.71; 1.21]	0.567	0.89	[0.66; 1.21]	0.461	0.81	[0.49; 1.32]	0.397	0.99	[0.72; 1.35]	0.938	0.73	[0.41; 1.29]	0.277	1.00	[0.74; 1.35]	0.988
Low muscle volume z-score	no	Ref			Ref			Ref			Ref			Ref			Ref		
	yes	1.54	[1.29; 1.84]	<0.001	1.52	[1.24; 1.87]	<0.001	1.50	[1.10; 2.03]	0.009	1.55	[1.24; 1.93]	<0.001	1.51	[1.00; 2.27]	0.048	1.53	[1.25; 1.87]	<0.001
High muscle fat infiltration (MFI)	no	Ref			Ref			Ref			Ref			Ref			Ref		
	yes	1.63	[1.35; 1.99]	<0.001	1.72	[1.38; 2.15]	<0.001	1.57	[1.12; 2.19]	0.008	1.65	[1.29; 2.10]	<0.001	1.56	[1.01; 2.41]	0.045	1.66	[1.33; 2.06]	<0.001
Adverse muscle composition	no	Ref			Ref			Ref			Ref			Ref			Ref		
	yes	1.94	[1.57; 2.39]	<0.001	1.88	[1.48; 2.39]	<0.001	2.02	[1.41; 2.91]	<0.001	1.86	[1.44; 2.41]	<0.001	2.23	[1.32; 3.77]	0.003	1.89	[1.50; 2.37]	<0.001
Liver PDFF	%	1.00	[0.98; 1.02]	0.864	1.01	[0.98; 1.03]	0.559	1.02	[0.99; 1.06]	0.232	0.99	[0.96; 1.02]	0.548	1.03	[0.99; 1.07]	0.140	0.99	[0.96; 1.02]	0.458
Muscle volum z- score	SD	0.78	[0.70; 0.85]	<0.001	0.77	[0.69; 0.86]	<0.001	0.83	[0.71; 0.98]	0.025	0.75	[0.66; 0.85]	<0.001	0.84	[0.70; 1.02]	0.073	0.76	[0.68; 0.85]	<0.001
Muscle fat infiltration	%	1.16	[1.11; 1.21]	<0.001	1.15	[1.10; 1.22]	<0.001	1.21	[1.14; 1.27]	<0.001	1.14	[1.08; 1.21]	<0.001	1.20	[1.11; 1.29]	<0.001	1.15	[1.10; 1.21]	<0.001

Table S5 Cox proportional-hazard ratios (**adjusted for sex and/or age, and BMI**) of all-cause mortality for different strata of the UK Biobank data: (1) whole cohort, (2) whole cohort excluding participants with a previous cancer diagnosis at imaging, (3) women only, (4) men only, (5) younger participants (below median age of 64.7 years), and (6) older participants (above median age of 64.7 years). For categorical variables: non-alcoholic fatty liver disease (NAFLD) [yes/no], low muscle volume z-score [yes/no], high muscle fat infiltration [yes/no], adverse muscle composition (MC) and continuous variables: liver proton density fat fraction (PDFF) [%], muscle volume z-score [SD], muscle fat infiltration (MFI) [%]. CI, confidence interval; Ref, reference.

Variable	Unit	Unadjusted			Model 1 (+ sex, age, BMI)			Model 2 (+ low hand grip strength, smoking, alcohol)			Model 3 (+ previous cancer, coronary heart disease, type 2 diabetes)		
		HR	95 % CI	p-value	HR	95 % CI	p-value	HR	95 % CI	p-value	HR	95 % CI	p-value
Adverse muscle composition	no	Ref			Ref			Ref			Ref		
	yes	2.84	[1.70;4.75]	<0.001	1.83	[1.08;3.12]	0.0251	1.82	[1.06;3.14]	0.0302	1.72	[1.00;2.98]	0.0514
Sex	female				Ref			Ref			Ref		
	male				2.07	[1.22;3.50]	0.0067	2.31	[1.31;4.05]	0.0036	2.31	[1.31;4.08]	0.0039
Age	years				1.11	[1.07;1.16]	<0.001	1.11	[1.06;1.16]	<0.001	1.10	[1.06;1.15]	<0.001
BMI	kg/m ²				1.05	[1.00;1.10]	0.0721	1.04	[0.99;1.09]	0.1411	1.04	[0.99;1.09]	0.1546
Low hand grip strength	no							Ref			Ref		
	yes							1.33	[0.67;2.66]	0.4171	1.41	[0.71;2.81]	0.3294
Physical activity	moderate							Ref			Ref		
	low							1.40	[0.81;2.43]	0.2308	1.39	[0.80;2.41]	0.2411
	high							1.16	[0.62;2.15]	0.6445	1.17	[0.63;2.17]	0.6199
Smoking status	no							Ref			Ref		
	previous							1.18	[0.72;1.93]	0.5192	1.17	[0.71;1.92]	0.5368
	current							0.66	[0.09;4.81]	0.6781	0.65	[0.09;4.80]	0.6749
Alcohol consumption	g/day							0.99	[0.95;1.02]	0.4206	0.99	[0.95;1.02]	0.4468
Cancer	no										Ref		
	yes										1.90	[1.08;3.37]	0.0267
Coronary heart disease	no										Ref		
	yes										1.14	[0.56;2.36]	0.7133
Type 2 diabetes	no										Ref		
	yes										1.20	[0.67;2.16]	0.5345

Table S6 Cox proportional-hazard ratios of all-cause mortality *within NAFLD (N=5,069)* for adverse muscle composition (MC) [yes/no] including unadjusted hazard ratios (HRs) and subsequent adjustments for sex, age, BMI (Model 1); low hand grip strength, smoking status, alcohol consumption (Model 2); previous cancer, coronary heart disease, type 2 diabetes diagnosis (Model 3). BMI, body mass index; CI, confidence interval; Ref, reference.

Variable	Unit	Unadjusted			Model 1 (+ sex, age, BMI)			Model 2 (+ low hand grip strength, smoking, alcohol)			Model 3 (+ previous cancer, coronary heart disease, type 2 diabetes)		
		HR	95 % CI	p-value	HR	95 % CI	p-value	HR	95 % CI	p-value	HR	95 % CI	p-value
Muscle fat infiltration	%	1.15	[1.07;1.24]	<0.001	1.13	[1.03;1.24]	0.0097	1.14	[1.02;1.26]	0.0171	1.13	[1.01;1.26]	0.0263
Sex	female				Ref			Ref			Ref		
	male				2.52	[1.46;4.35]	<0.001	2.83	[1.57;5.10]	<0.001	2.82	[1.55;5.12]	<0.001
Age	years				1.11	[1.07;1.16]	<0.001	1.10	[1.06;1.15]	<0.001	1.10	[1.05;1.14]	<0.001
BMI	kg/m ²				1.02	[0.97;1.08]	0.4518	1.01	[0.95;1.07]	0.7091	1.01	[0.96;1.07]	0.6631
Low hand grip strength	no							Ref			Ref		
	yes							1.39	[0.70;2.75]	0.3479	1.45	[0.73;2.87]	0.2914
Physical activity	moderate							Ref			Ref		
	low							1.38	[0.80;2.39]	0.2523	1.36	[0.79;2.37]	0.2687
	high							1.15	[0.62;2.14]	0.6546	1.16	[0.62;2.15]	0.6388
Smoking status	no							Ref			Ref		
	previous							1.19	[0.73;1.96]	0.4837	1.19	[0.72;1.95]	0.4975
	current							0.64	[0.09;4.72]	0.6642	0.63	[0.09;4.67]	0.6551
Alcohol consumption	g/day							0.99	[0.95;1.02]	0.4460	0.99	[0.95;1.02]	0.4742
Cancer	no										Ref		
	yes										1.95	[1.10;3.44]	0.0214
Coronary heart disease	no										Ref		
	yes										1.18	[0.57;2.41]	0.6571
Type 2 diabetes	no										Ref		
	yes										1.15	[0.64;2.08]	0.6394

Table S7 Cox proportional-hazard ratios of all-cause mortality *within NAFLD (N=5,069)* for adverse muscle fat infiltration (MFI) [%] including unadjusted hazard ratios (HRs) and subsequent adjustments for sex, age, BMI (Model 1); low hand grip strength, smoking status, alcohol consumption (Model 2); previous cancer, coronary heart disease, type 2 diabetes diagnosis (Model 3). BMI, body mass index; CI, confidence interval; Ref, reference.

Variable	Unit	Unadjusted			Model 1 (+ sex, age, BMI)			Model 2 (+ low hand grip strength, smoking, alcohol)			Model 3 (+ previous cancer, coronary heart disease, type 2 diabetes)		
		HR	95 % CI	p-value	HR	95 % CI	p-value	HR	95 % CI	p-value	HR	95 % CI	p-value
Muscle volume z-score	%	0.70	[0.55;0.88]	0.0028	0.74	[0.56;0.96]	0.0248	0.75	[0.57;0.99]	0.0442	0.77	[0.58;1.02]	0.0688
Sex	female				Ref			Ref			Ref		
	male				2.01	[1.18;3.40]	0.0098	2.24	[1.27;3.94]	0.0054	2.24	[1.26;3.98]	0.0058
Age	years				1.11	[1.07;1.16]	<0.001	1.11	[1.06;1.15]	<0.001	1.10	[1.06;1.15]	<0.001
BMI	kg/m ²				1.09	[1.03;1.14]	0.0021	1.08	[1.02;1.14]	0.0091	1.07	[1.01;1.14]	0.0151
Low hand grip strength	no							Ref			Ref		
	yes							1.35	[0.68;2.69]	0.3880	1.41	[0.71;2.80]	0.3264
Physical activity	moderate							Ref			Ref		
	low							1.19	[0.72;1.95]	0.5005	1.37	[0.79;2.37]	0.2674
	high							0.67	[0.09;4.91]	0.6927	1.17	[0.63;2.17]	0.6171
Smoking status	no							Ref			Ref		
	previous							1.37	[0.79;2.38]	0.2628	1.18	[0.72;1.93]	0.5221
	current							1.16	[0.63;2.15]	0.6384	0.66	[0.09;4.85]	0.6829
Alcohol consumption	g/day							0.99	[0.95;1.02]	0.4491	0.99	[0.95;1.02]	0.4623
Cancer	no										Ref		
	yes										1.92	[1.09;3.40]	0.0242
Coronary heart disease	no										Ref		
	yes										1.18	[0.58;2.42]	0.6526
Type 2 diabetes	no										Ref		
	yes										1.19	[0.66;2.13]	0.5691

Table S8 Cox proportional-hazard ratios of all-cause mortality *within NAFLD (N=5,069)* for muscle volume z-score [SD] including unadjusted hazard ratios (HRs) and subsequent adjustments for sex, age, BMI (Model 1); low hand grip strength, smoking status, alcohol consumption (Model 2); previous cancer, coronary heart disease, type 2 diabetes diagnosis (Model 3). BMI, body mass index; CI, confidence interval; Ref, reference.

Supplementary figures

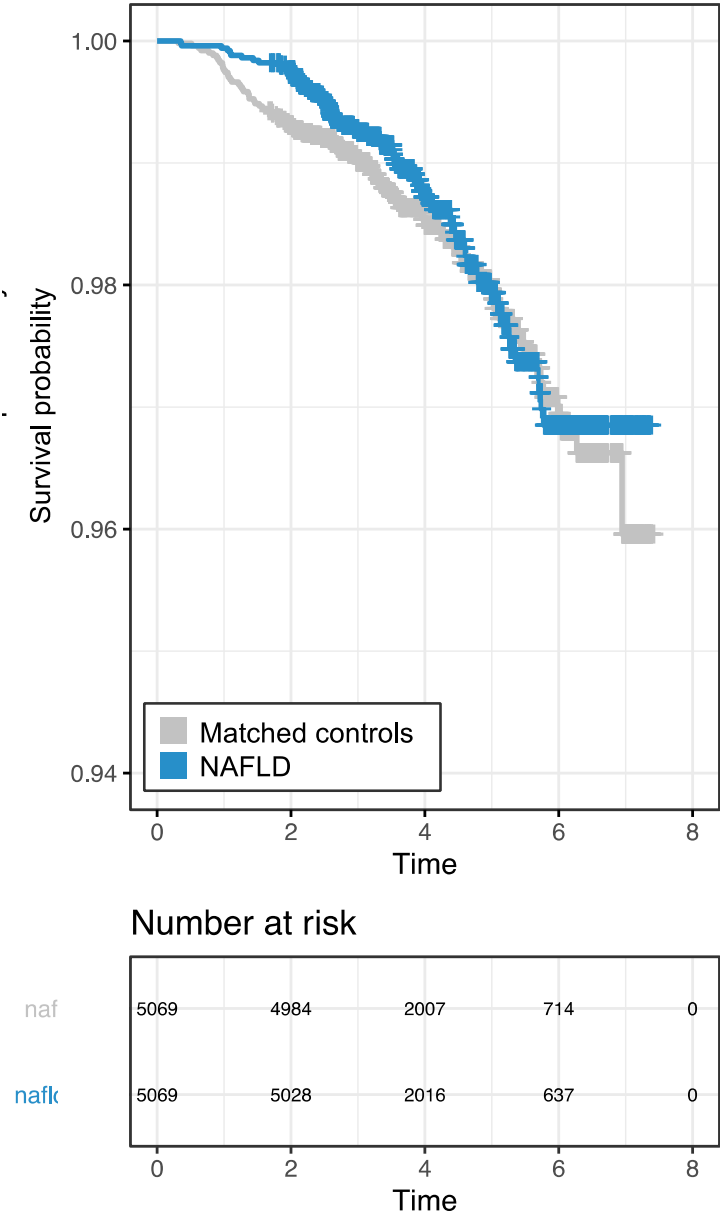


Figure S1 Kaplan-Meier survival curves for all-cause mortality comparing NAFLD (blue) [N=5,069] and sex-, age- and BMI-matched controls (grey) [N=5,069] including counts participants at risk over time. Corresponding to the left panel in Figure 3.

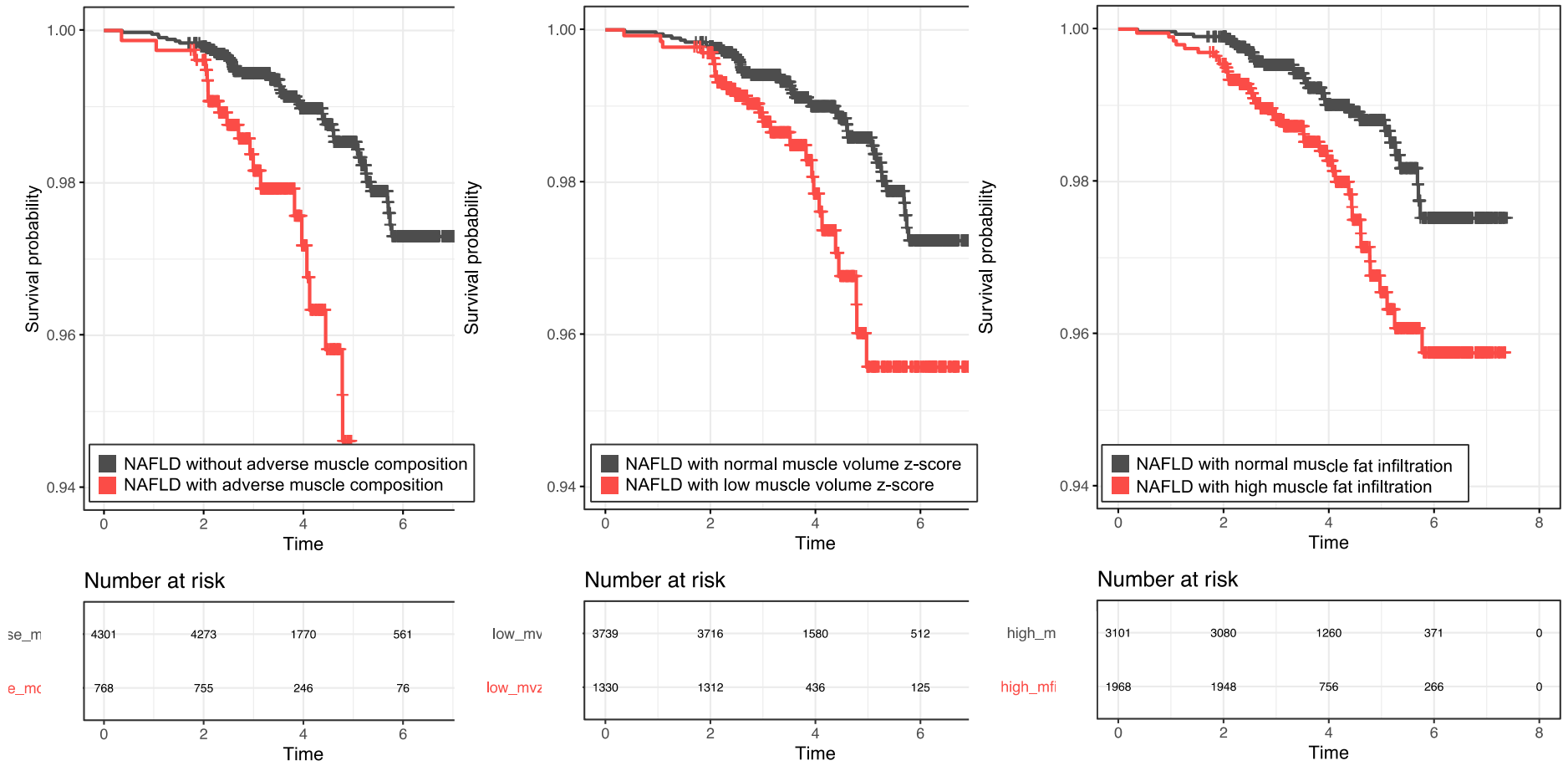


Figure S2 Kaplan-Meier survival curves comparing NAFLD participants with adverse muscle composition (low muscle volume and high muscle fat) [yes/no], low muscle volume (muscle volume z-score < -0.68 SD) [yes/no], high muscle fat (muscle fat infiltration (MFI) > 8.82% for female participants and 7.69% for male participants, respectively) [yes/no] including counts of participants at risk over time. Corresponding to Figure 4.

Supplementary references

1. Reeder SB, Cruite I, Hamilton G, Sirlin CB. Quantitative Assessment of Liver Fat with Magnetic Resonance Imaging and Spectroscopy. *JMRI* 2011;34(4):spcone. 10.1002/jmri.22775
2. Hamilton G, Yokoo T, Bydder M, Cruite I, Schroeder ME, Sirlin CB, Middleton MS. In Vivo Characterization of the Liver Fat 1H MR Spectrum. *NMR Biomed* 2011;24(7):784–90. 10.1002/nbm.1622
3. Romu T, Borga M, OD Leinhard. MANA-Multi Scale Adaptive Normalized Averaging. In: *Proceedings of the 2011 IEEE International Symposium on Biomedical Imaging*. 2011;361-4. 10.1109/ISBI.2011.5872424
4. OD Leinhard, A Johansson, J Rydell, Smedby Ö, Nyström F, Lundberg P, Borga M. Quantitative Abdominal Fat Estimation Using MRI Pattern Recognition. In: *Proceedings of the 19th International Conference on Pattern Recognition (ICPR)* 08-11 Dec, 2008; Tampa, FL. 10.1109/ICPR.2008.4761764
5. Peterson P, Romu T, Brorson H, Dahlqvist Leinhard O, Månsson S. Fat Quantification in Skeletal Muscle Using Multigradient-Echo Imaging: Comparison of Fat and Water References. *JMRI* 2016;43:203–12. 10.1002/jmri.24972
6. Karlsson A, Rosander J, Romu T, Tallberg J, Grönqvist A, Borga M, Dahlqvist Leinhard O. Automatic and Quantitative Assessment of Regional Muscle Volume by Multi-Atlas Segmentation Using Whole-Body Water–Fat MRI. *JMRI* 2015;41(6):1558-69. 10.1002/jmri.24726
7. West J, Romu T, Thorell S, Lindblom H, Berin E, Spetz Holm A, Lindh Åstrand L, Karlsson A, Borga M, Hammar M, Dahlqvist Leinhard O. Precision of MRI-based body composition measurements of postmenopausal women. *PLoS One* 2018;13(2):e0192495. 10.1371/journal.pone.0192495
8. West J, Dahlqvist Leinhard O, Romu T, et al. Feasibility of MR-based body composition analysis in large scale population studies. *PLoS ONE* 2016; 11:e0163332. 10.1371/journal.pone.0163332
9. Borga M, Thomas EL, Romu T, et al. Validation of a fast method for quantification of intra-abdominal and subcutaneous adipose tissue for large scale human studies. *NMR Biomed* 2015;28:1747-1753. 10.1002/nbm.3432