

Figure S1. (A) The infection efficiencies of shCtrl and shNLE1 in A549 and NCI-H1299 cells were evaluated by observing the fluorescence of GFP. Magnification times: 200×. (B, C) The knockdown efficiencies of shCtrl and shNLE1 in A549 and NCI-H1299 cells were evaluated by qRT-PCR assay (B) and western blot analysis (C). Results were presented as mean \pm SD. *** $P < 0.001$.

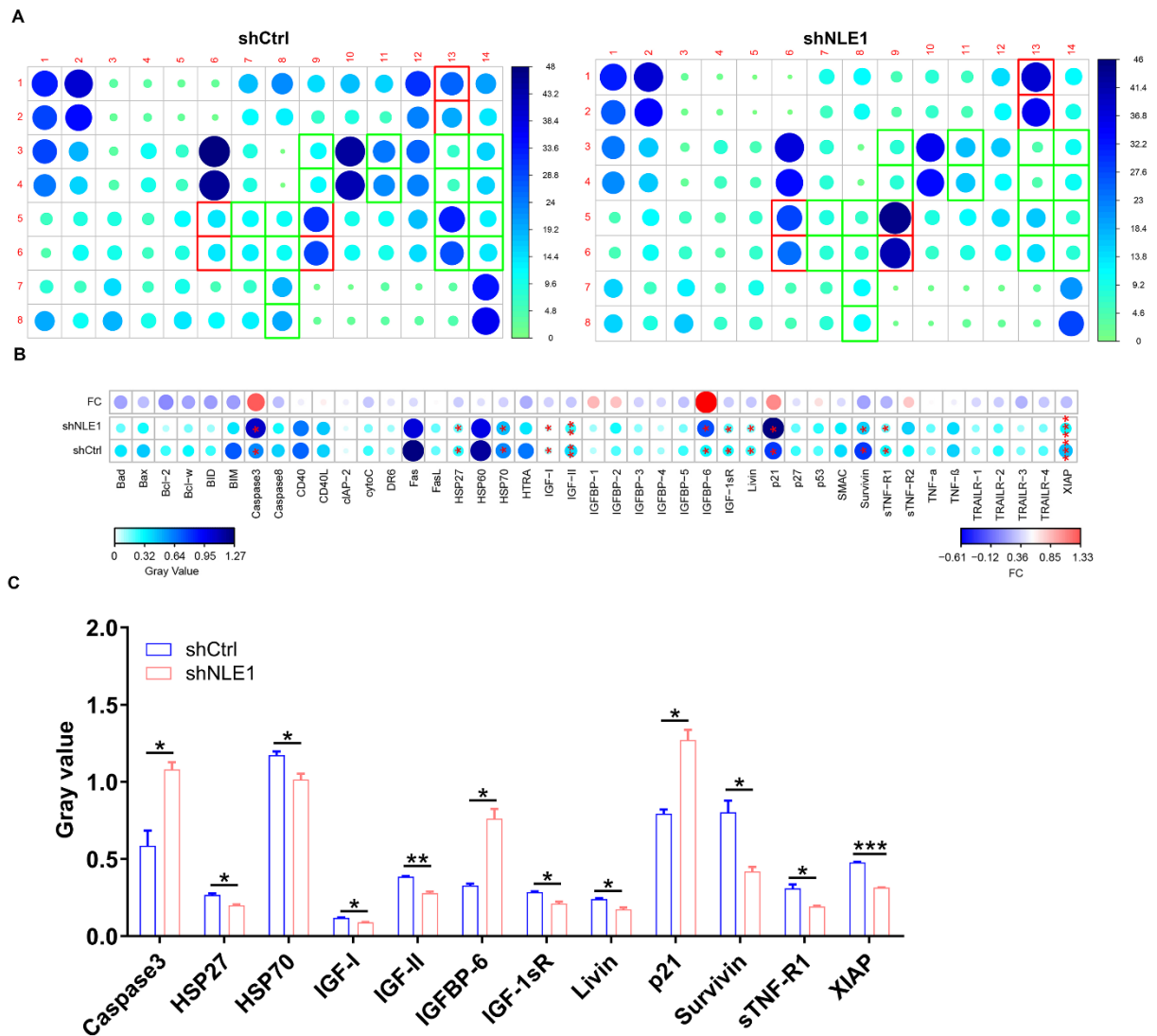


Figure S2. (A) The expression of apoptosis-related proteins was measured in NCI-H1299 cells infected with shCtrl and shNLE1 by ECL with Human Apoptosis Antibody Array. The results circled in red indicated that the protein expression was up-regulated and $P < 0.05$. (B, C) Protein expression was visualized by R studio (B) and presented in gray value (C). Results were presented as mean \pm SD. * $P < 0.05$, ** $P < 0.01$, *** $P < 0.001$.

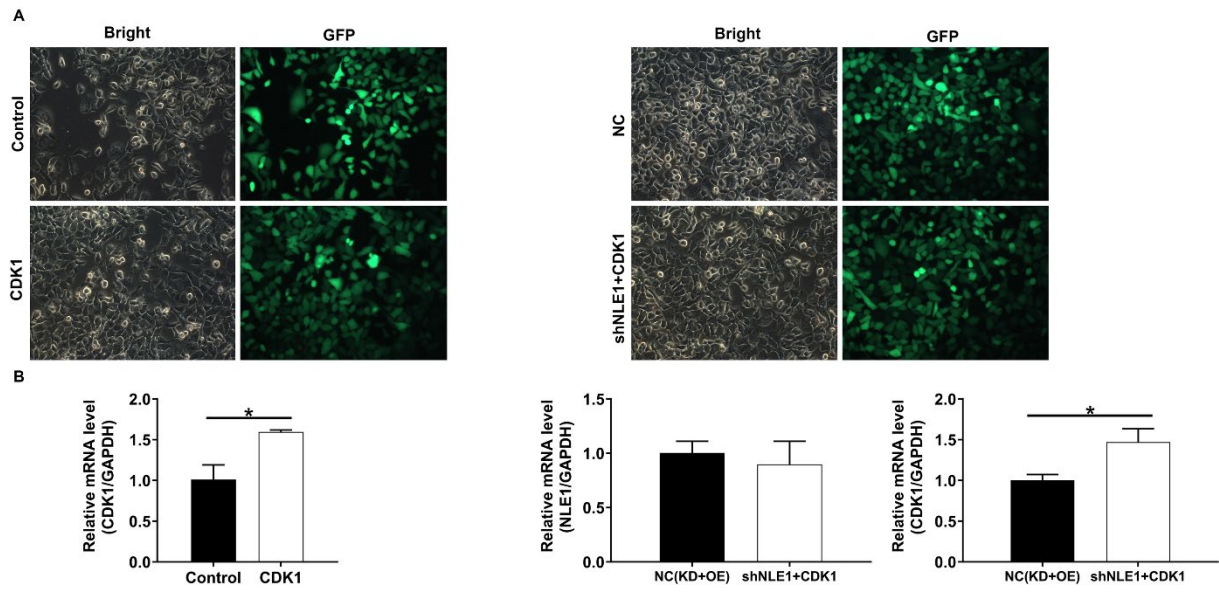


Figure S3. (A) The infection efficiencies of CDK1 and CDK1+shNLE1 in NCI-H1299 cells were assessed through observing the fluorescence of GFP. Magnification times: 200 \times . (B) The overexpression or knockdown efficiencies of CDK1 and CDK1+shNLE1 in NCI-H1299 cells were assessed through qRT-PCR assay. Results were presented as mean \pm SD. * $P < 0.05$.