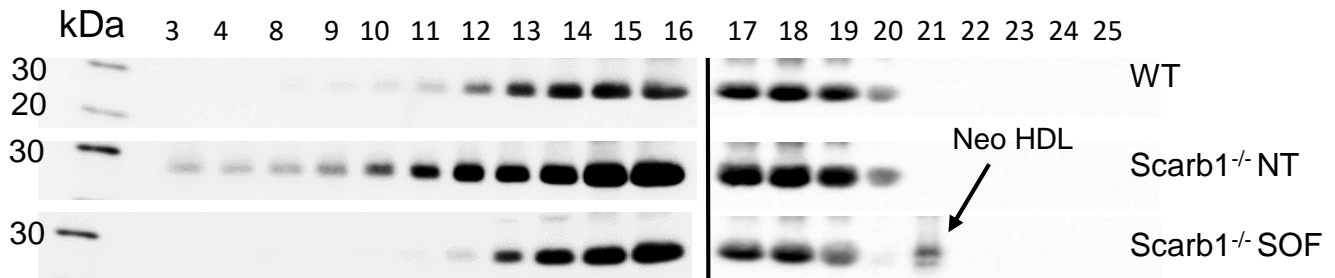
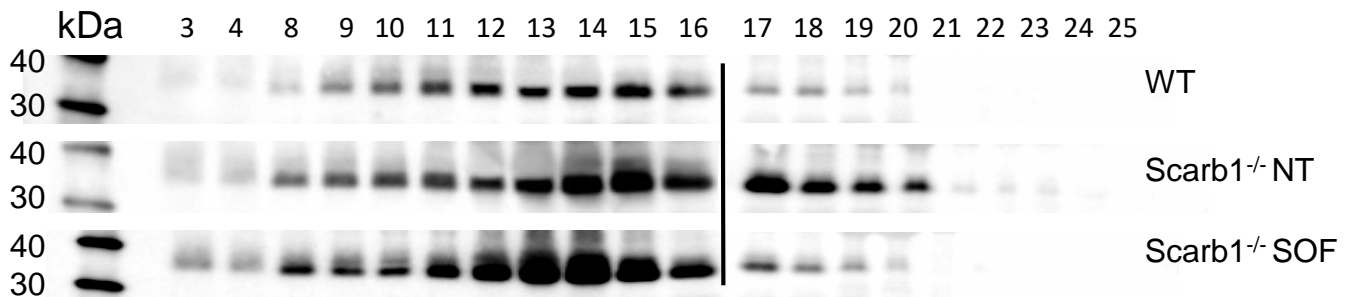


### ApoAI



### ApoE



**Supplementary Figure 2:** SEC of Plasma from Mice according to Absorbance (280 nm) and Immunoblots of the Collected Fractions as Labeled. There were five mice per group—WT (17 weeks old), Scarb1<sup>-/-</sup> (21 weeks old), and Scarb1<sup>-/-</sup> + AAV<sub>SOF</sub> (21 weeks old), which had received AAV<sub>SOF</sub> for 3 weeks prior to sacrifice. SEC and immunoblot data are representative. Plasma loading was loading was 15  $\mu$ L for lanes 3, 4, and 8-20 and 2  $\mu$ L for lanes 21-25,