

Figure 4D

Loading order: His₆-Pib2²²¹⁻⁶³⁵ - WT S268A S309A SASA
Snf1 WT TA WT TA WT TA WT TA WT TA

³²P Autoradiography

Replica 1

Replica 2

Replica 3

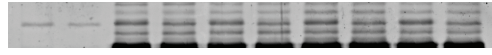
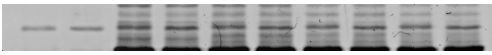


Sypro Ruby - Snf1 variants

Replica 1

Replica 2

Replica 3



Sypro Ruby - Pib2 variants

Replica 1

Replica 2

Replica 3

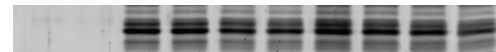
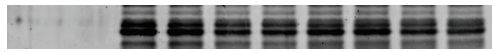
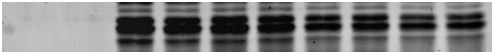


Figure 4F

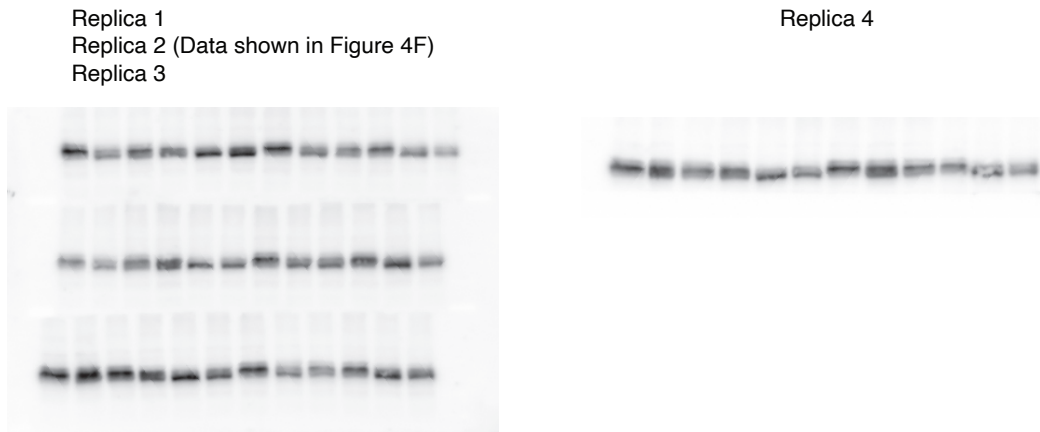
Loading order:

	<i>snf1^{as}</i>		<i>snf1^{as} pib2Δ</i>		<i>snf1^{as} pib2^{SASA}</i>		<i>snf1^{as} pib2^{SESE}</i>	
	Exp	-C	Exp	-C	Exp	-C	Exp	-C
2NM-PP1	-	+	-	+	-	+	-	+

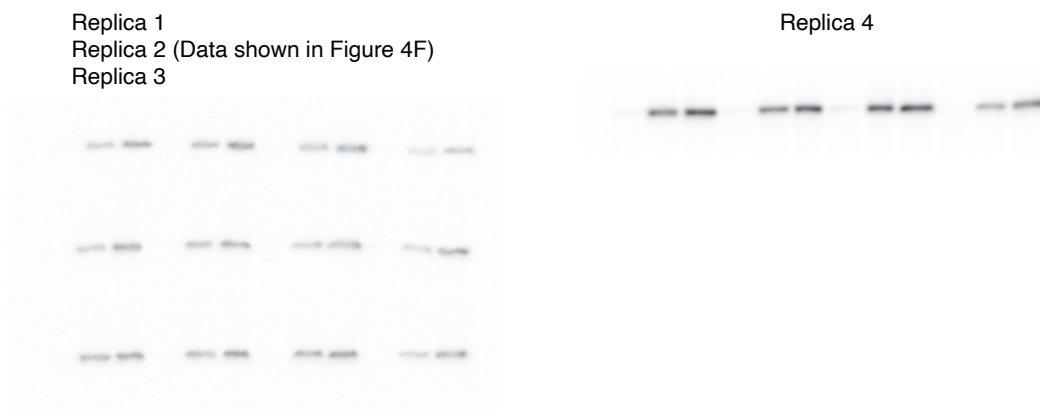
Anti-Sch9-pThr⁷³⁷



Anti-Sch9



Anti-Snf1-pThr²¹⁰



Anti-His₆



Figure 4H

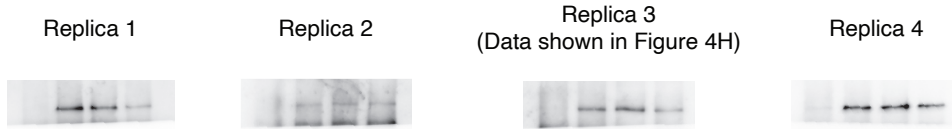
Loading order:

Pib2-myc ₁₃	-	WT	SA	SE
Kog1-HA ₃	+	+	+	+

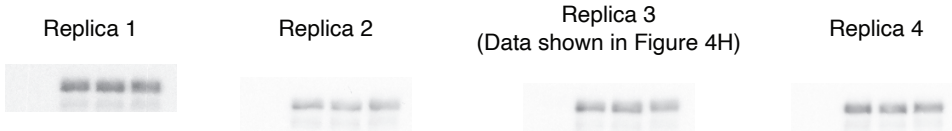
Anti-HA
Input



IP: anti-myc



Anti-myc
Input



IP: anti-myc

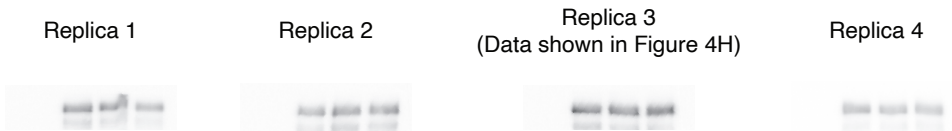


Figure 4I

Loading order: Pib2-myc₁₃ variant

<i>snf1^{as}</i>		
WT	SA	SE
	SA	SE

