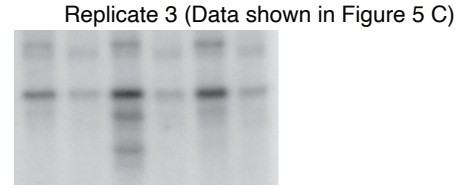
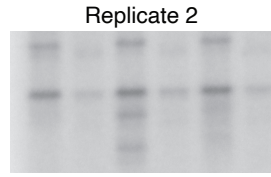
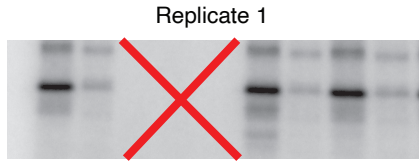


# Figure 5C

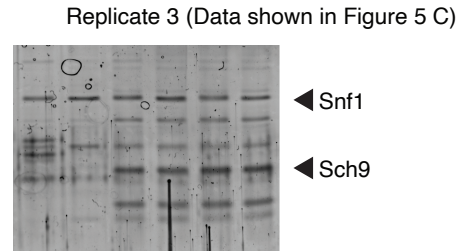
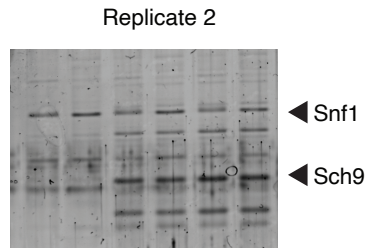
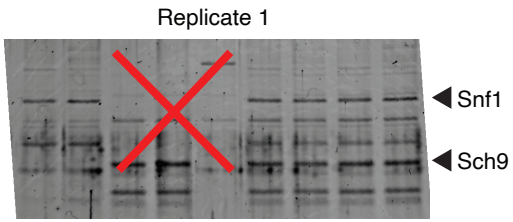
Loading order:

Sch9 <sup>1-394</sup>	<sup>32</sup> P						Sypro Ruby							
	-		WT		S288A		-		WT		S288A			
	WT	TA	WT	TA	WT	TA	WT	TA	WT	TA	WT	TA		
Snf1														

## <sup>32</sup>P Autoradiography



## Sypro Ruby



Replica 4 (Data shown in Figure 6A)

# Figure 5D

Loading order:

	<i>snf1<sup>as</sup></i>						<i>snf1<sup>as</sup> sch9<sup>S288A</sup></i>						<i>snf1<sup>as</sup></i>						<i>snf1<sup>as</sup> sch9<sup>S288E</sup></i>										
	Exp	DMSO			2NM-PP1			Exp	DMSO			2NM-PP1			Exp	DMSO			2NM-PP1			Exp	DMSO			2NM-PP1			
-C (min)		2	5	15	2	5	15		2	5	15	2	5	15		2	5	15	2	5	15		2	5	15	2	5	15	
0.05% Glc (min)		2	5	15	2	5	15		2	5	15	2	5	15	0.05% Glc (min)		2	5	15	2	5	15		2	5	15	2	5	15

Anti-Sch9-pThr<sup>288</sup>

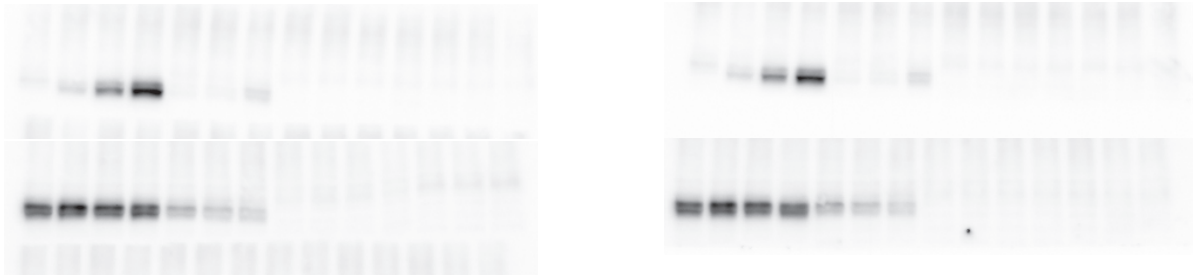
Replica 1



Replica 2



Replica 3 (Data shown in Figure 5D)



Anti-Sch9

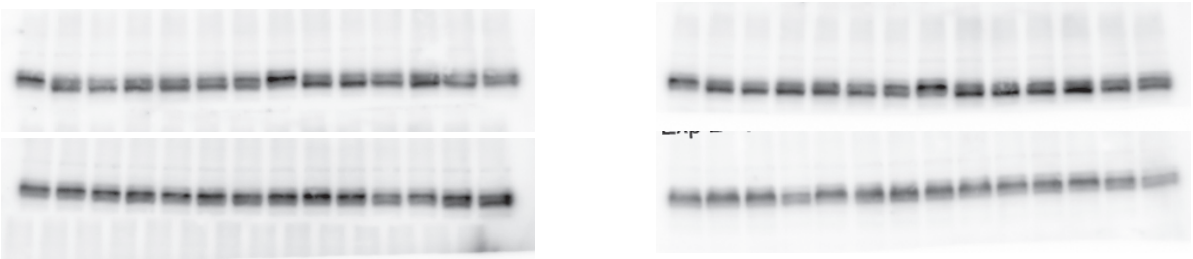
Replica 1



Replica 2



Replica 3 (Data shown in Figure 5D)

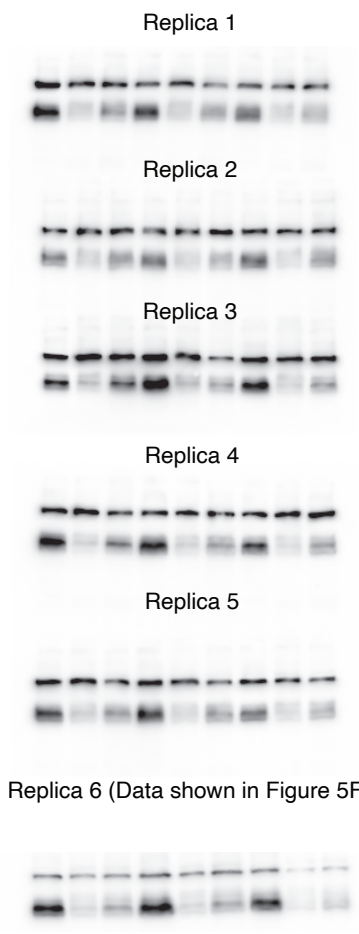


# Figure 5F

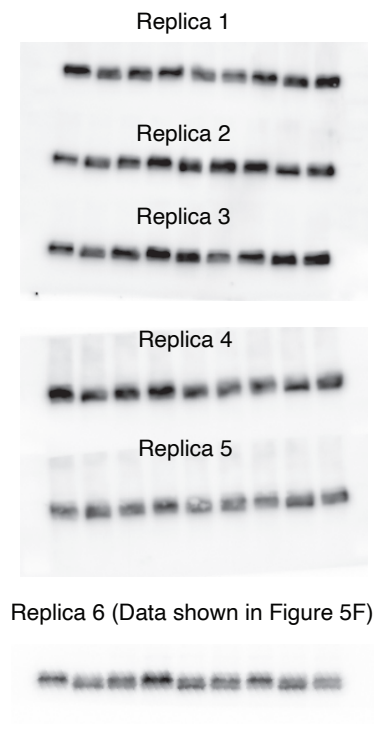
		<i>snf1<sup>as</sup></i>		<i>snf1<sup>as</sup></i>		
		<i>sch9<sup>SA</sup></i>		<i>sch9<sup>SE</sup></i>		
Exp	-C	Exp	-C	Exp	-C	
2NM-PP1	-	+	-	+	-	+

Loading order: 2NM-PP1

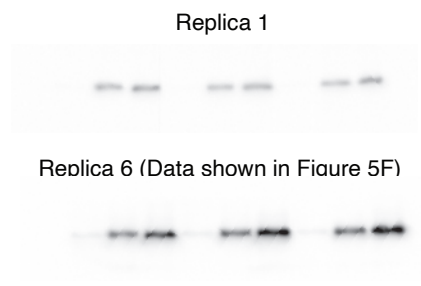
## Anti-Sch9-pThr<sup>737</sup>



## Anti-Sch9



## Anti-Snf1-pThr<sup>210</sup>



## Anti-His<sub>6</sub>

