



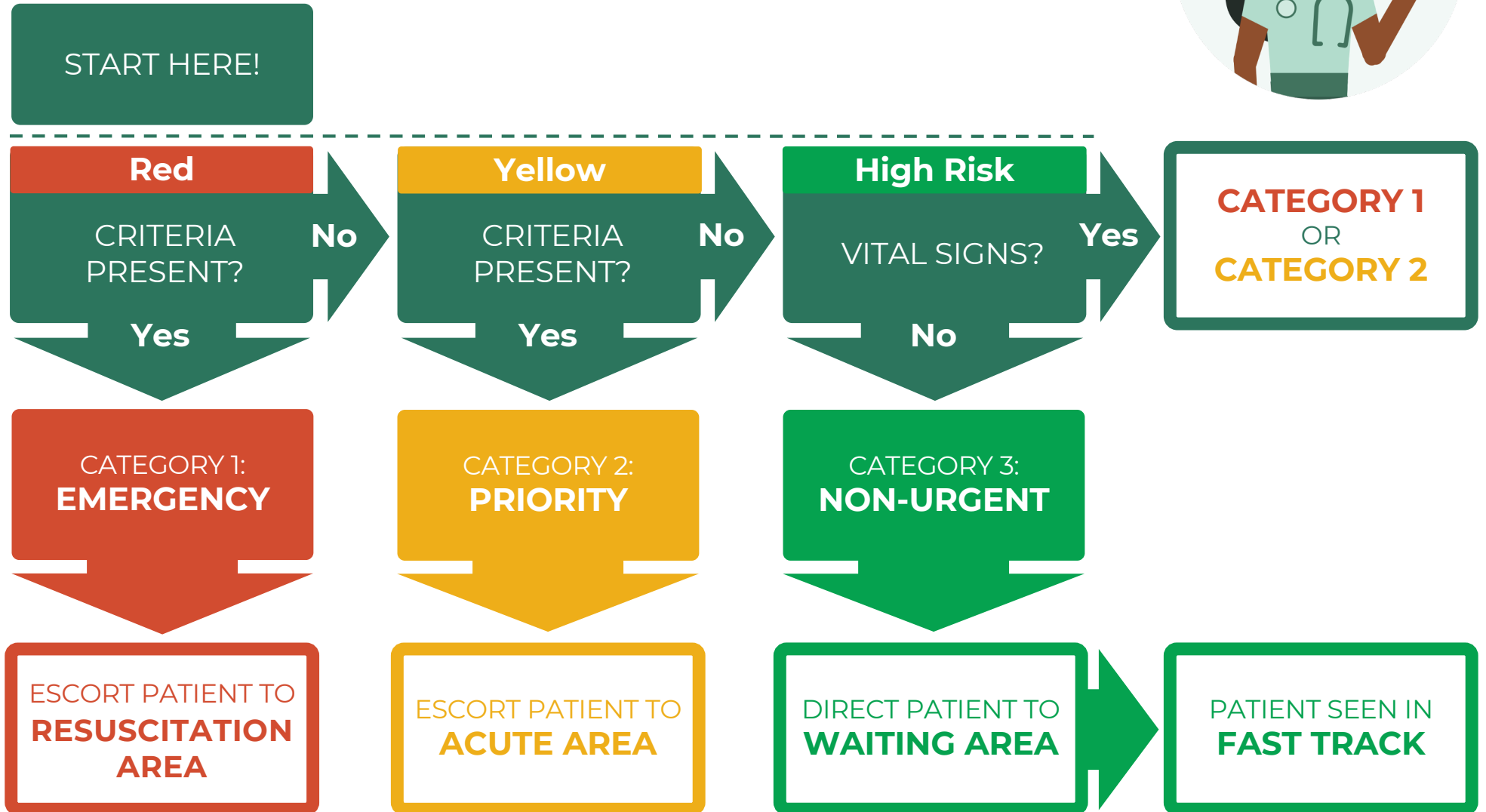
Interagency Integrated Triage Tool



# Quick Reference Guide

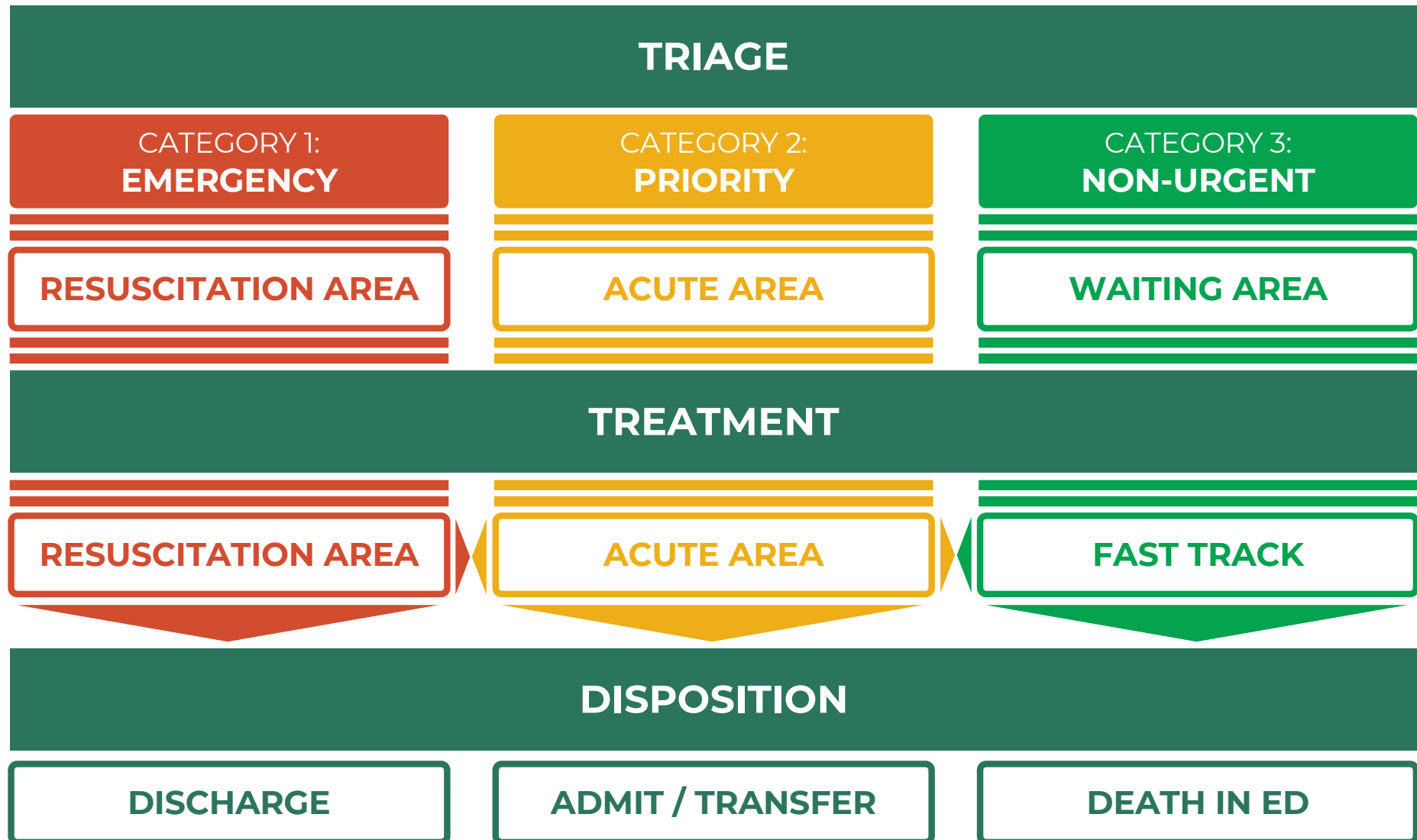
# Interagency Integrated Triage Tool

## Triage Assessment



Interagency Integrated Triage Tool

# Patient Flow



# Interagency Integrated Triage Tool

## Adult Assessment Pathway

### Red criteria present?

### Yellow criteria present?

### High-risk vital signs?

#### Airway & Breathing

Stridor  
Respiratory distress  
Central cyanosis

#### Circulation

Heavy bleeding  
Capillary refill >3 seconds  
Weak and fast pulse  
HR <50 or >150 bpm

#### Disability

Unresponsive  
Active convulsions  
Hypoglycaemia  
Any two of headache, altered mental state, stiff neck, fever or hypothermia

#### Other

High-risk trauma\*  
Threatened limb\*  
Poisoning or chemical exposure\*  
Snake bite

Acute chest or abdominal pain (>50 years)  
ECG with ischaemia  
Violent or aggressive  
Pregnant with any of:

- Heavy bleeding
- Severe abdominal pain
- Seizures
- Altered mental state
- Severe headache
- Visual changes
- SBP  $\geq$ 160 or DBP  $\geq$ 110
- Active labour
- Trauma

No

Yes

RESUSCITATION AREA

#### Airway & Breathing

Wheezing  
Any swelling/mass of mouth, throat or neck

#### Circulation

Vomits everything  
Ongoing diarrhoea  
Unable to feed or drink  
Severe pallor  
Ongoing bleeding  
Recent fainting

#### Disability

Altered mental status  
Agitation  
Acute general weakness  
Acute focal neurological complaint  
Acute visual disturbance  
Severe pain

#### Other

New rash that is:  
- Worsening over hours  
- Peeling  
Visible acute limb deformity  
Open fracture  
Suspected dislocation  
Other trauma or burns  
Sexual assault  
Acute testicular or scrotal pain  
Priapism  
Unable to pass urine  
Known diagnosis requiring urgent surgical intervention  
Exposure requiring time-sensitive treatment (eg, animal bite, needlestick)  
Pregnancy with complications

No

Yes

ACUTE AREA

#### Respiratory rate

<10 or >30 breaths per minute

#### Oxygen saturation

<92% on room air

#### Heart rate

<60 or >130 beats per minute

#### AVPU

AVPU other than A

#### Temperature

<36°C or >39°C

Yes

No

WAITING AREA

FAST TRACK

CATEGORY 1 OR CATEGORY 2

## Interagency Integrated Triage Tool

# Red Criteria

### Airway & Breathing

Stridor  
Respiratory distress  
Central cyanosis

### Circulation

Heavy bleeding  
Capillary refill >3 seconds  
Weak and fast pulse  
HR <50 or >150 bpm

### Disability

Unresponsive  
Active convulsions  
Hypoglycaemia  
Any two of headache, altered mental state, stiff neck, fever or hypothermia

### Other

High-risk trauma\*  
Threatened limb\*  
Poisoning or chemical exposure\*  
Snake bite  
Acute chest or abdominal pain (>50 years)  
ECG with ischaemia  
Violent or aggressive  
Pregnant with any of:  
- Heavy bleeding  
- Severe abdominal pain  
- Seizures or altered mental state  
- Severe headache  
- Visual changes  
- SBP  $\geq$ 160 or DBP  $\geq$ 110  
- Active labour  
- Trauma

## Interagency Integrated Triage Tool

# Yellow Criteria

### **Airway & Breathing**

Wheezing  
Any swelling/mass of mouth,  
throat or neck

### **Circulation**

Vomits everything  
Ongoing diarrhoea  
Unable to feed or drink  
Severe pallor  
Ongoing bleeding  
Recent fainting

### **Disability**

Altered mental status or agitation  
Acute general weakness  
Acute focal neurological complaint  
Acute visual disturbance  
Severe pain

### **Other**

New rash that is:  
- Worsening over hours  
- Peeling  
Visible acute limb deformity  
Open fracture  
Suspected dislocation  
Other trauma  
Other burns  
Sexual assault  
Acute testicular/scrotal pain  
Priapism  
Unable to pass urine  
Known diagnosis requiring urgent surgical  
intervention  
Exposure requiring time-sensitive treatment  
(eg, animal bite, needlestick)  
Pregnancy with complications

# Interagency Integrated Triage Tool

## High-Risk Vital Signs

### ADULT CRITERIA

#### Respiratory rate

<10 or >30 breaths per minute

#### Oxygen saturation

<92% on room air

#### Heart rate

<60 or >130 beats per minute

#### AVPU

AVPU other than A

#### Temperature

<36°C or >39°C

### PAEDIATRIC CRITERIA

#### Respiratory rate

<1yo: <25 or >50 breaths per minute

1-4yo: <20 or >40 breaths per minute

5-12yo: <10 or >30 breaths per minute

#### Oxygen saturation

<92% on room air

#### Heart rate

<1yo: <90 or >180 beats per minute

1-4yo: <80 or >160 beats per minute

5-12yo: <70 or >140 beats per minute

#### AVPU

AVPU other than A

#### Temperature

<36°C or >39°C

# Interagency Integrated Triage Tool

## High-Risk Trauma

### General

Fall from twice person's height  
Penetrating trauma, excluding distal to knee or elbow with bleeding controlled  
Crush injury  
Injuries to multiple body areas  
Known bleeding disorder  
Pregnant

### Road traffic accidents

High-speed motor vehicle accident  
Pedestrian or cyclist hit by vehicle  
Other person in same vehicle deceased  
Trapped or thrown from vehicle  
Motor vehicle accident and patient not wearing a seatbelt

### Burns

Greater than 15% body surface area  
Circumferential burns  
Burns involving the face or neck  
Inhalation injury  
Patient <2 years or >70 years

### Threatened limb

Pulseless limb  
Any painful limb that is also:

- Pale
- Weak
- Numb
- Massively swollen

### Poisoning

Any high-risk ingestion or exposure



## Interagency Integrated Triage Tool

# Respiratory Distress

### Adults

Very fast or slow breathing  
Inability to talk or walk unassisted  
Confused, sleepy or agitated  
Accessory muscle use (neck,  
intercostal or abdominal muscles)

### Children

Very fast breathing  
Inability to talk, eat or breastfeed  
Nasal flaring or grunting  
Accessory muscle use (head nodding  
or chest indrawing)

# Paediatric Assessment Pathway

## Red criteria present?

## Yellow criteria present?

## High-risk vital signs?

### Airway & Breathing

Stridor  
Respiratory distress  
Central cyanosis

### Circulation

Heavy bleeding  
Capillary refill  
    >3 seconds  
Weak and fast pulse  
Cold extremities  
Any two of:  
- Lethargy  
- Sunken eyes  
- Very slow skin pinch  
- Poor drinking

### Disability

Unresponsive  
Active convulsions  
Hypoglycaemia  
Altered mental state, stiff neck, fever or hypothermia

### Other

Infant <8 days old  
Age <2 months and temperature  
    <36 or >39°C  
High-risk trauma\*  
Threatened limb\*  
Poisoning/chemical exposure\*  
Snake bite  
Acute testicular OR scrotal pain  
Priapism  
Pregnant with adult red criteria

No

Yes

RESUSCITATION AREA

### Airway & Breathing

Wheezing  
Any swelling/mass of mouth, throat or neck

### Circulation

Vomits everything  
Ongoing diarrhoea  
Unable to feed  
Unable to drink  
Dehydration  
Severe pallor

### Disability

Restless  
Continuously irritable  
Lethargy  
Headache  
Severe pain

Yes

ACUTE AREA

### Other

Any infant 8 days – 6 months  
Malnutrition with either:  
- Visible severe wasting  
- Oedema of both feet  
Other trauma  
Other burns  
Sexual assault  
New rash that is:  
- Worsening over hours  
- Peeling  
Known diagnosis requiring urgent surgical intervention  
Exposure requiring time-sensitive treatment (eg, animal bite, needlestick)  
Pregnancy (no red criteria)

No

### Respiratory rate

<1yo: <25 or >50 bpm  
1-4yo: <20 or >40 bpm  
5-12yo: <10 or >30 bpm

### Oxygen saturation

<92% on room air

### Heart rate

<1yo: <90 or >180 bpm  
1-4yo: <80 or >160 bpm  
5-12yo: <70 or >140 bpm

### AVPU

AVPU other than A

### Temperature

<36°C or >39°C

No

WAITING AREA

FAST TRACK

CATEGORY 1 OR CATEGORY 2

Yes

# Red Criteria | Paediatric Patients

## Airway & Breathing

Stridor  
Respiratory distress  
Central cyanosis

## Circulation

Heavy bleeding  
Capillary refill >3 seconds  
Weak and fast pulse  
Cold extremities  
Any two of:  
- Lethargy  
- Sunken eyes  
- Very slow skin pinch  
- Poor drinking

## Disability

Unresponsive  
Active convulsions  
Hypoglycaemia  
Altered mental status (confused, restless, continuously irritable or lethargic) with stiff neck, hypothermia or fever

## Other

Infant <8 days old  
Age <2 months and temperature <36 or >39°C  
High-risk trauma\*  
Threatened limb\*  
Poisoning or chemical exposure\*  
Snake bite  
Acute testicular/scrotal pain or priapism  
Pregnant with adult red criteria

# Yellow Criteria | Paediatric Patients

## **Airway & Breathing**

Wheezing

Any swelling/mass of mouth, throat or neck

## **Circulation**

Vomits everything

Ongoing diarrhoea

Unable to feed or drink

Dehydration

Severe pallor

## **Disability**

Restless or irritable

Lethargy

Headache

Severe pain

## **Other**

Any infant 8 days to 6 months old

Malnutrition with either of:

- Visible severe wasting
- Oedema of both feet

Other trauma

Other burns

Sexual assault

New rash that is:

- Worsening over hours
- Peeling

Known diagnosis requiring urgent surgical intervention

Exposure requiring time-sensitive treatment (eg, animal bite, needlestick)

Pregnancy without adult red criteria

Interagency Integrated Triage Tool

# Time to Treatment Targets

**CATEGORY**

**TARGET**

CATEGORY 1  
**EMERGENCY**

**5** MINUTES

CATEGORY 2  
**PRIORITY**

**30** MINUTES

CATEGORY 3  
**NON-URGENT**

**2** HOURS



The recommendations and diagrams in this Quick Reference Guide have been adapted from guidance distributed by the World Health Organization. Original materials related to the Interagency Integrated Triage Tool can be accessed at <https://apps.who.int/iris/handle/10665/331736>.

