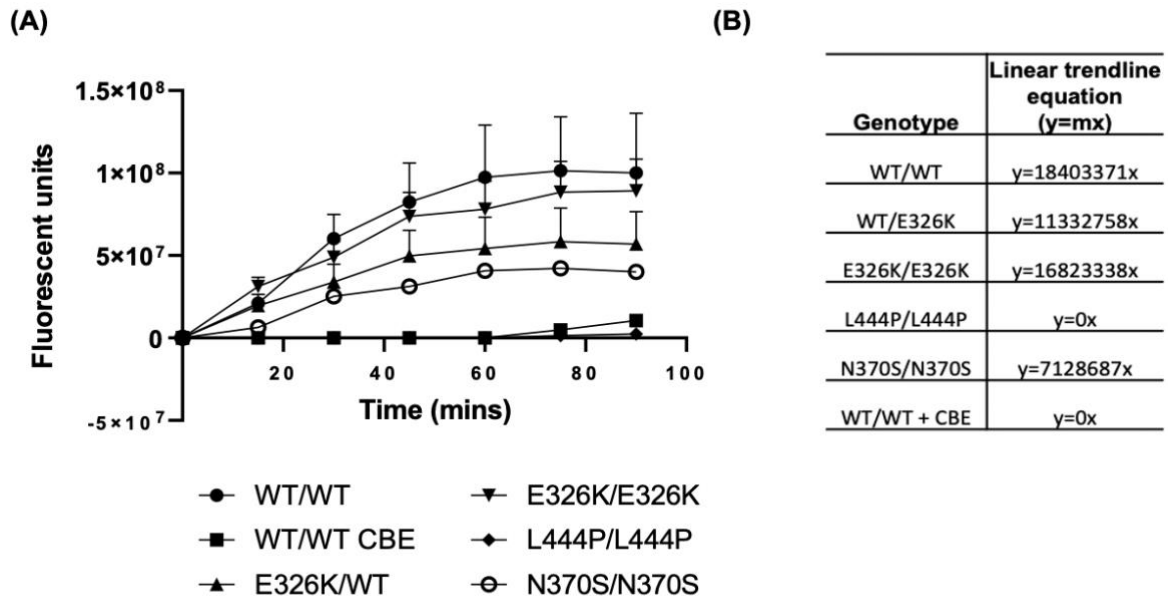


Legends to Figures



Supplementary Figure 1. Activity of lysosomal GCase in patient fibroblast lines.

(A) Fibroblast cell lines were incubated with PFB-FDGluc substrate for 1 hour at 37°C. Following washing, fluorescence was measured every 15 minutes for 90 minutes. (B) The initial linear rate of each reaction was calculated between time 0 and time 45 minutes and initial rate equations displayed in the table. The n for each genotype per experiment was WT/WT $n=3$; E326K/WT $n=1$; E326K/E326K $n=1$; L444P/L444P $n=2$; N370S/N370S $n=1$. Statistical test used was one way ANOVA with Tukey post-hoc analysis. Activity at 45 minutes: WT/WT vs. L444P/L444P *** $p<0.001$; WT/WT vs. WT/WT + CBE ** $p<0.01$; E326K/E326K vs. L444P/L444P * $p<0.05$. Raw data can be found at: <https://doi.org/10.5281/zenodo.6985167>