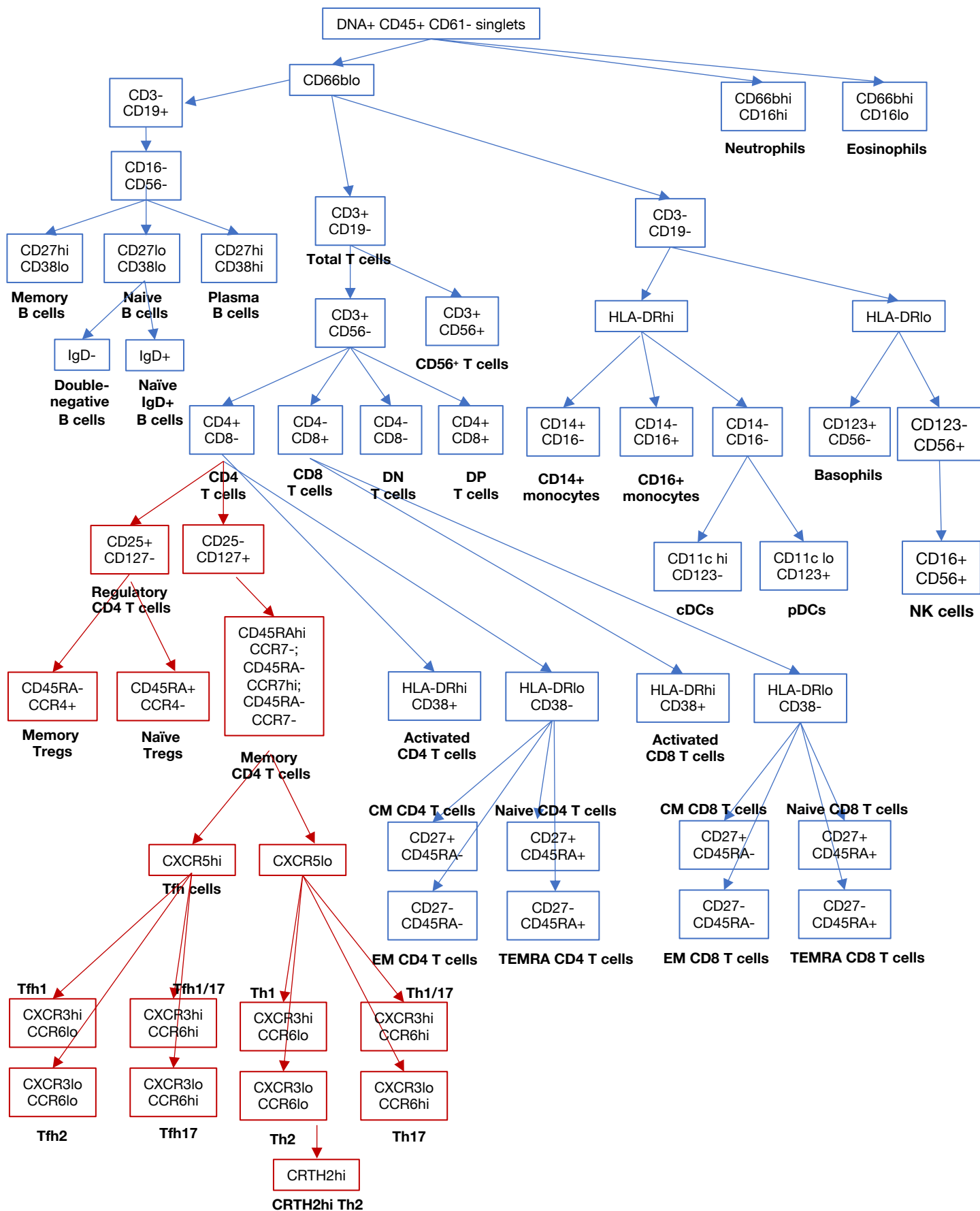

Supplementary information

**Autoimmunity in Down's syndrome via
cytokines, CD4 T cells and CD11c⁺ B cells**

In the format provided by the
authors and unedited



Supplementary Figure 1. Schematic of the gating hierarchy used to define immune populations by mass cytometry. Red boxes denote populations that were only resolved with the MDIPA staining protocol. Blue populations were resolved with both MDIPA staining and post-fixing extracellular staining protocols.