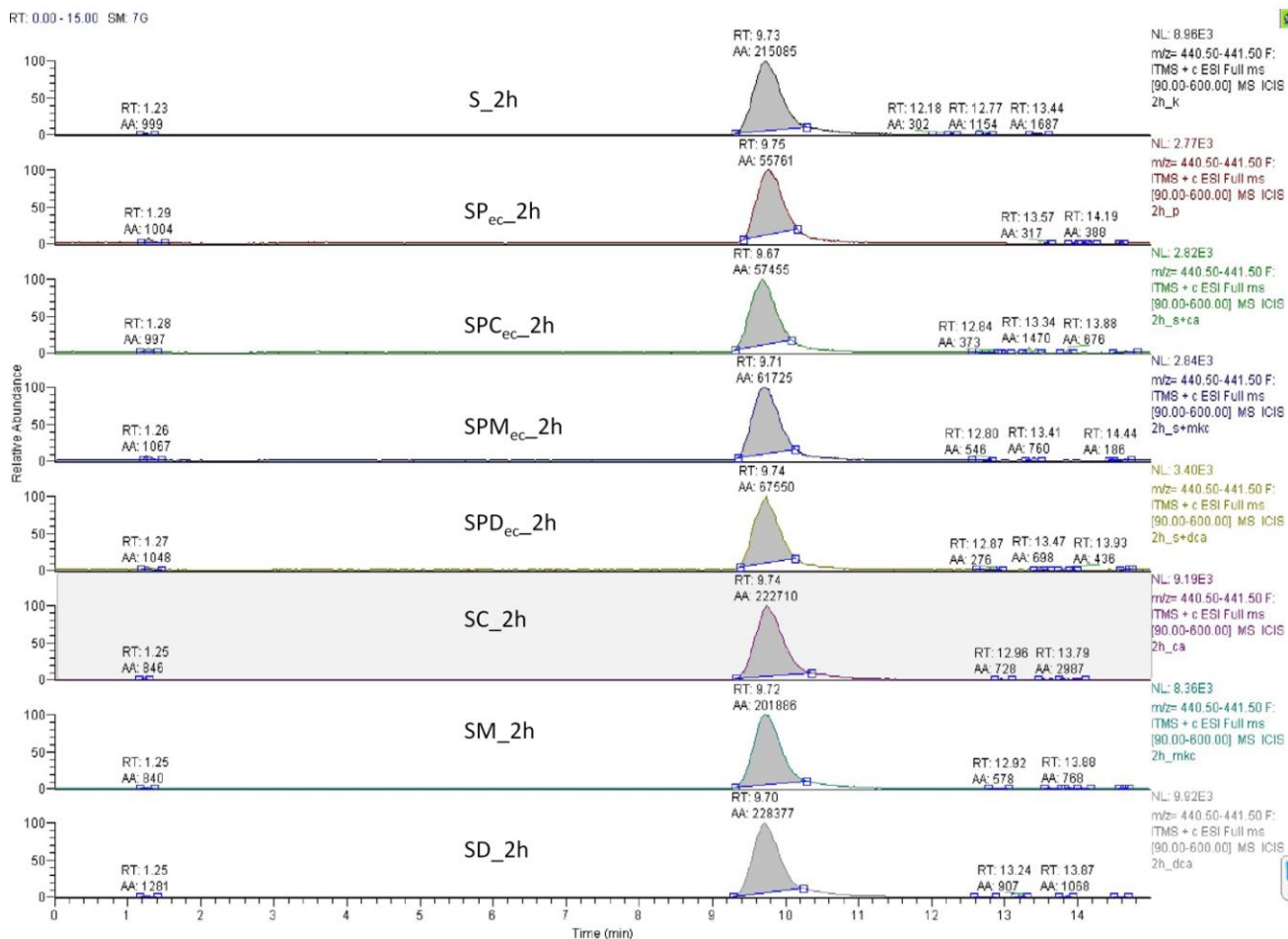


Supplementary Material



Supplementary Figure 1. LC-MS chromatograms of simvastatin samples after 2h of incubation in extracellular medium with probiotic bacteria and bile acids (S_{2h}-simvastatin in buffer, SP_{ec}_{2h}- extracellular concentration with probiotic bacteria, SPC_{ec}_{2h}- extracellular concentration with probiotic bacteria and CA, SPM_{ec}_{2h}- extracellular concentration with probiotic bacteria and MKC, SPD_{ec}_{2h}- extracellular concentration with probiotic bacteria and DCA, SC_{2h}- concentration with CA, SM_{2h}- concentration with MKC, SD_{2h}- concentration with DCA)