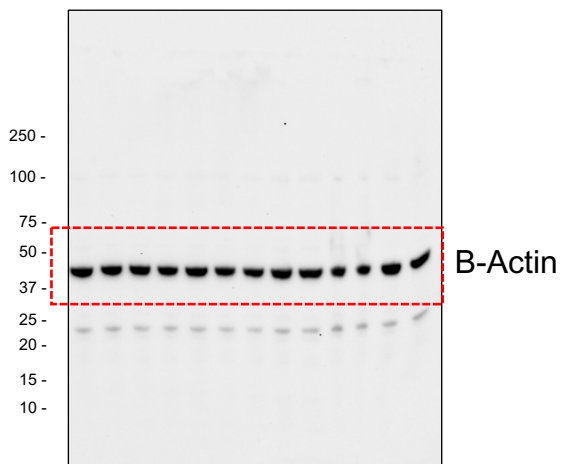
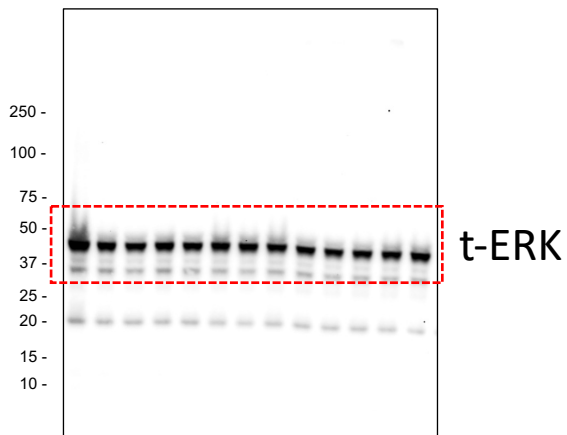
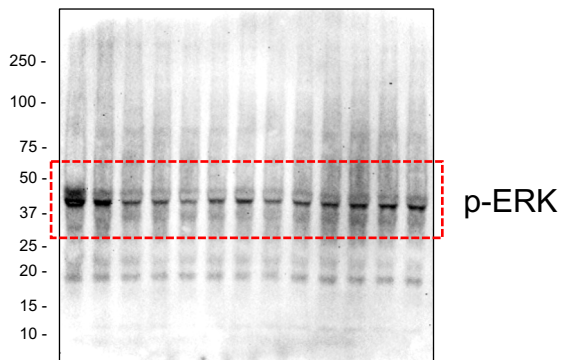
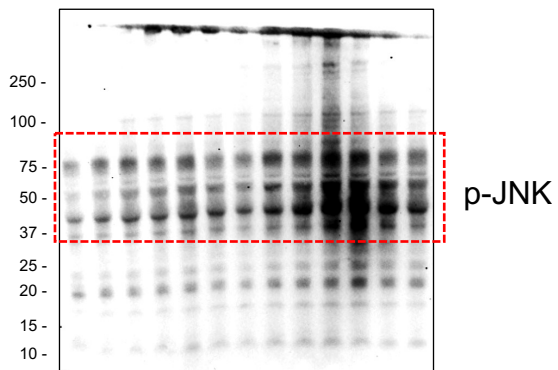
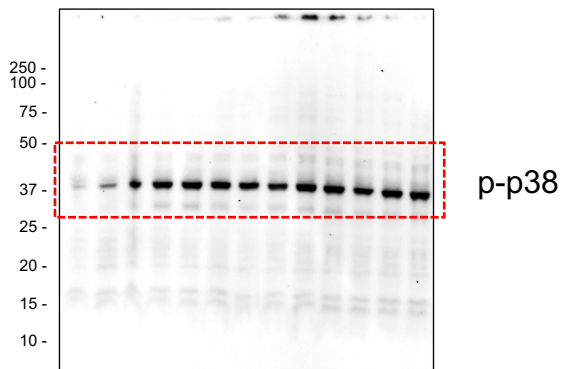


Figure 1E: Original Blots

E Nigericin (min): 0 15 30 45 60 75 90 105 120 135 150 165
18hr Prime: - + + + + + + + + + + +



E

Figure 4E: Original Blots

U937						M3K5i						KLA 18hr Nigericin (min)
+	+	+	+	+	+	+	+	+	+	+	+	
0	30	60	90	120	180	0	30	60	90	120	180	

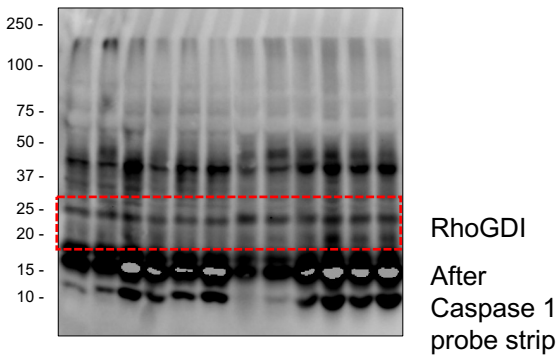
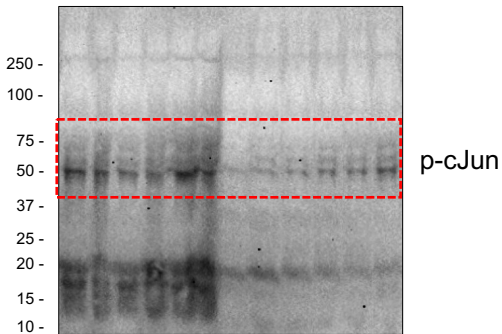
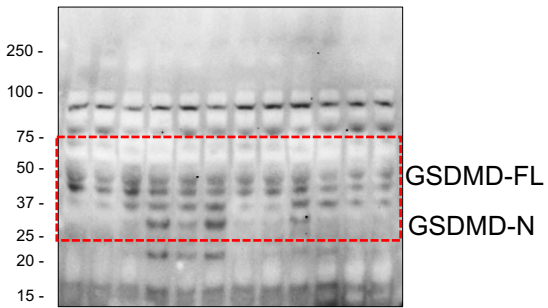
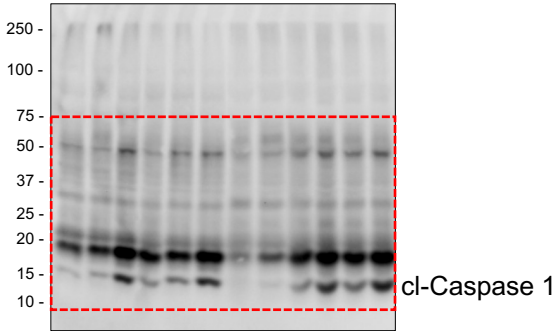


Figure 4F: Original Blots

U937						M3K7i						KLA 18hr Nigericin (min)
+	+	+	+	+	+	+	+	+	+	+	+	
0	30	60	90	120	180	0	30	60	90	120	180	

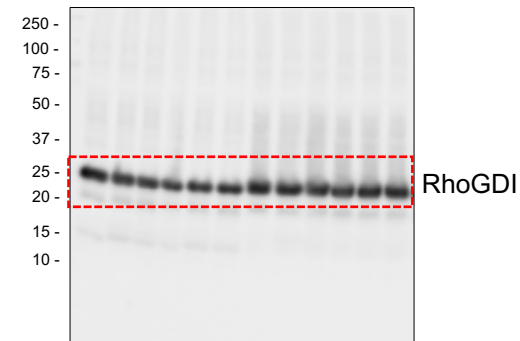
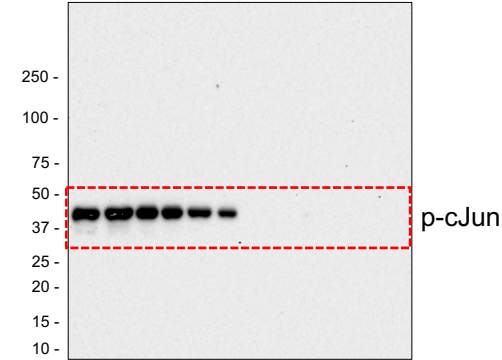
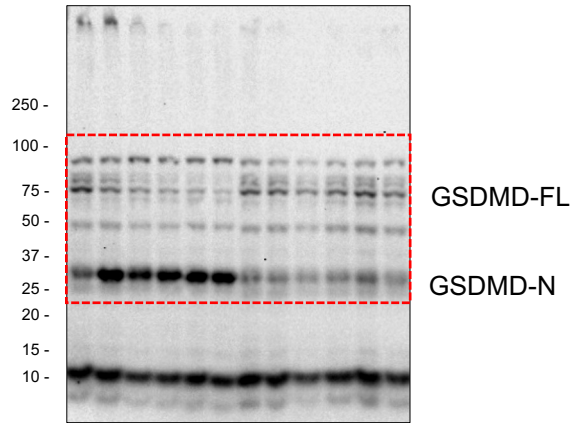
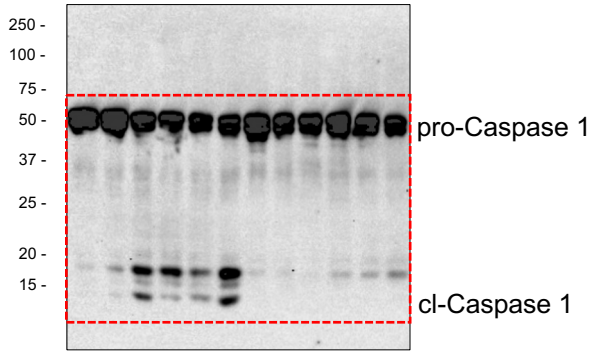
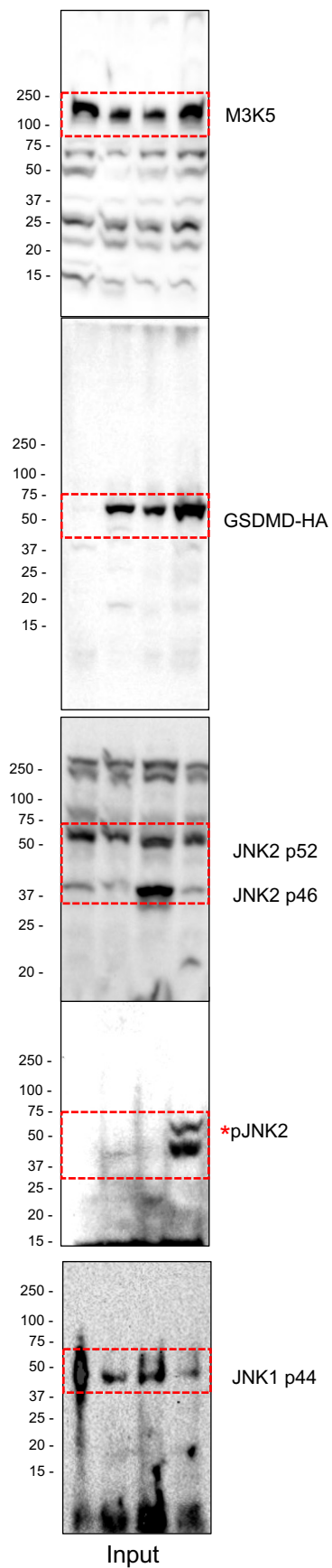


Figure 5F: Original Blots



E

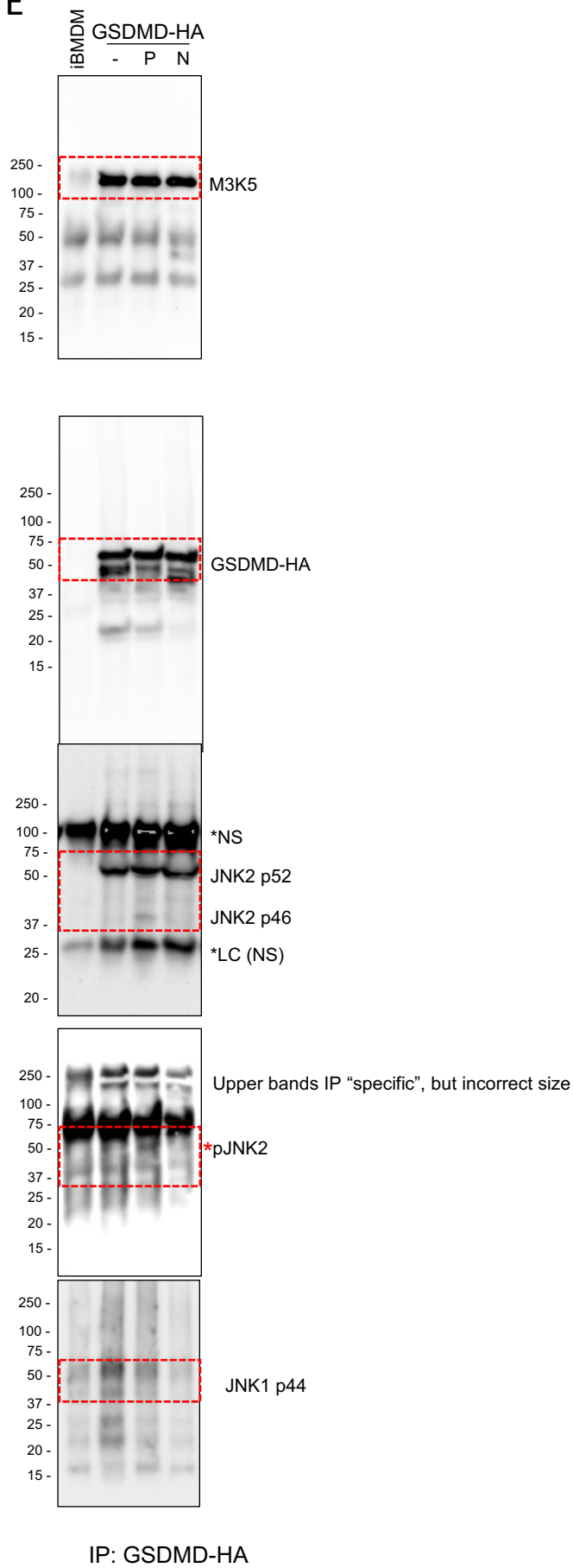


Figure 5G: Original Blots

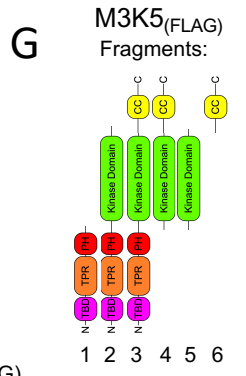
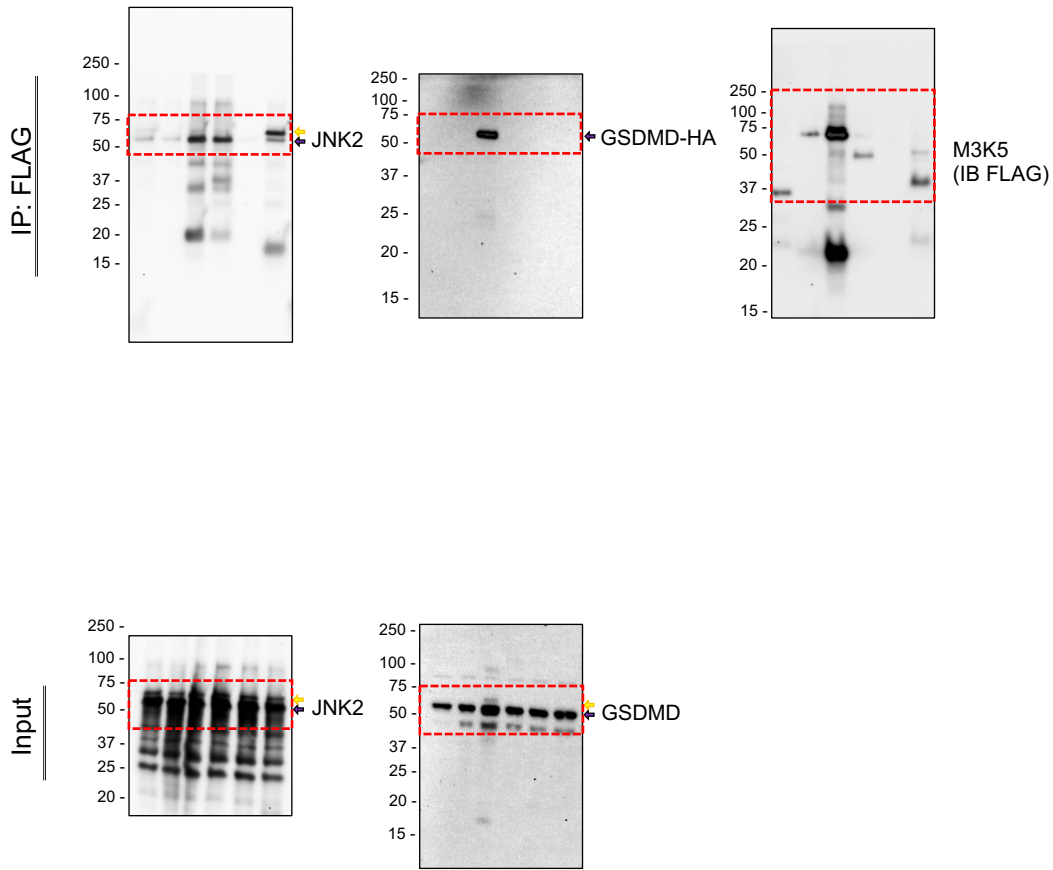
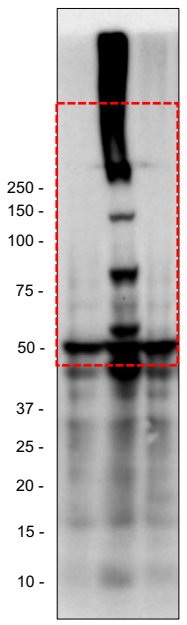


Figure 5H: Original Blots

Reductive SDS-PAGE

250 -
100 -
75 -
50 -



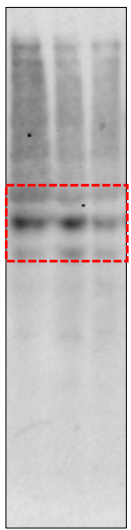
IB: HA (GSDMD_{HA})

250 -
150 -
100 -
75 -
50 -
37 -
25 -
20 -
15 -
10 -

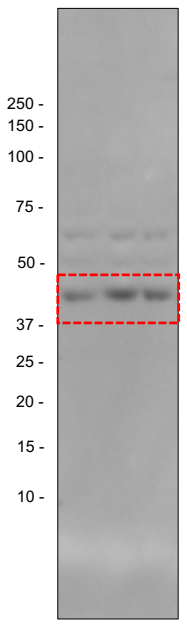


M3K5_{FLAG}

250 -
150 -
100 -
75 -
50 -
37 -
25 -
20 -
15 -
10 -



JNK2



β-Actin

M3K5:JNK2:GSDMD
293T Co-expression

+	+	+	GSDMD
-	+	+	M3K5:JNK2
-	-	-	Inhibitor

M3K5i

Figure 6C: Original Blots Same Lysate as 5E run 2 Months post initial analysis

iBMDM GSDMD-HA
- P N

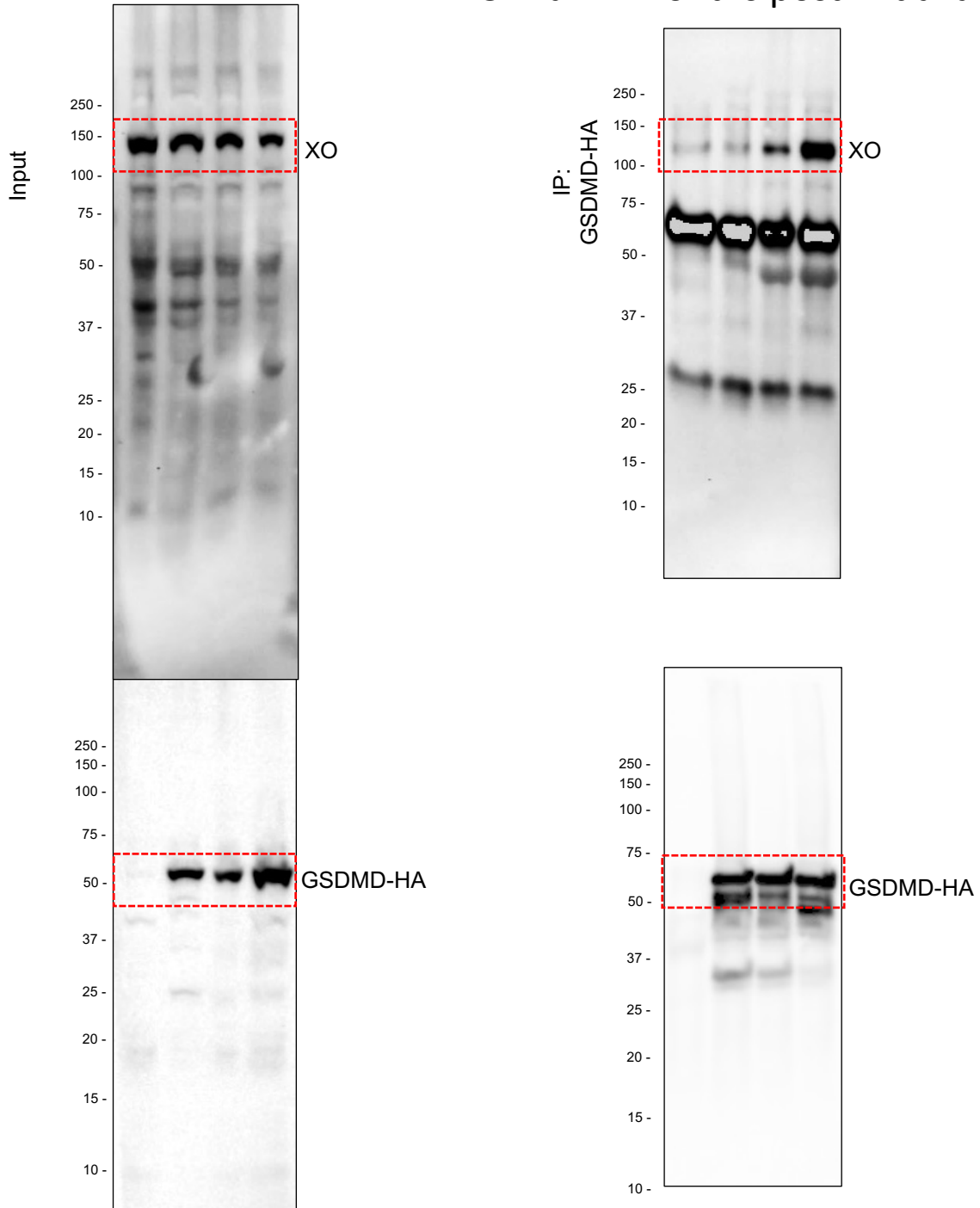


Figure 7H: Original Blots

BMDM						JNK2 ^{-/-}						KLA 18hr Nigericin											
0'	+	15'	+	30'	+	45'	+	60'	+	120'	+		0'	+	15'	+	30'	+	45'	+	60'	+	120'

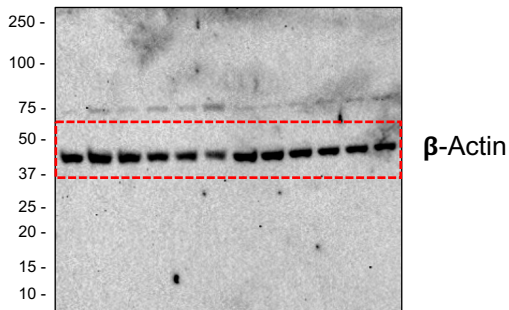
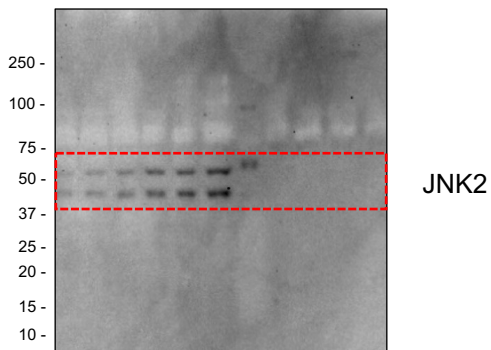
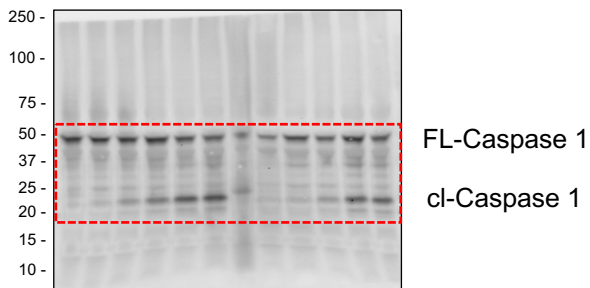
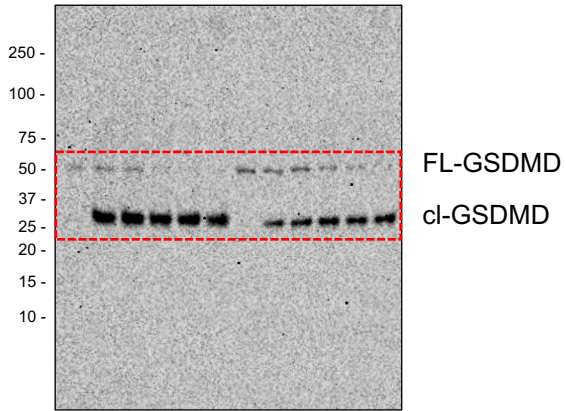


Figure S1A: Original Blots

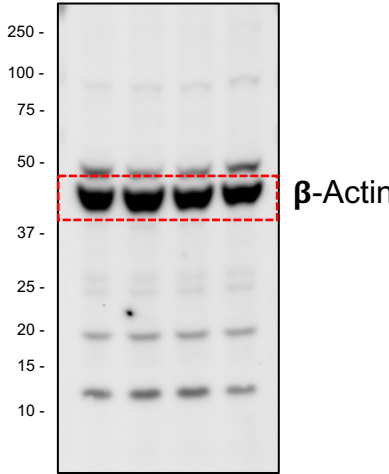
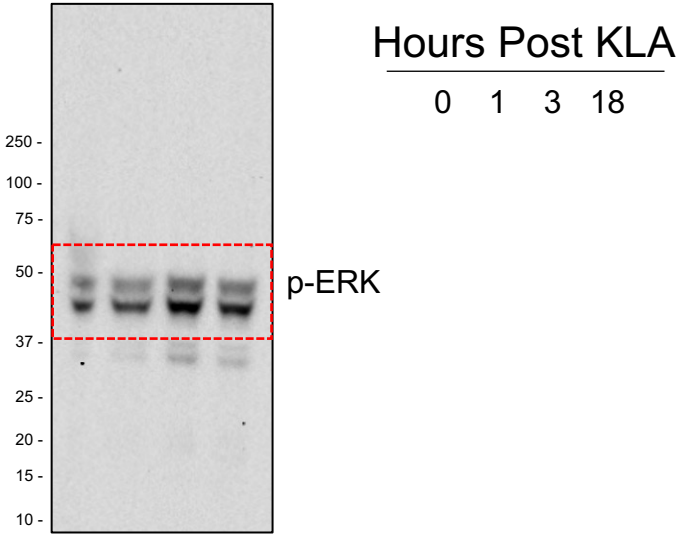
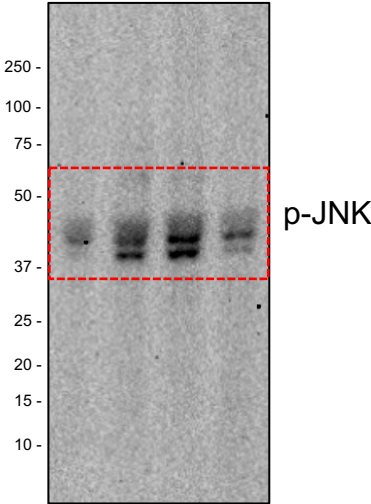
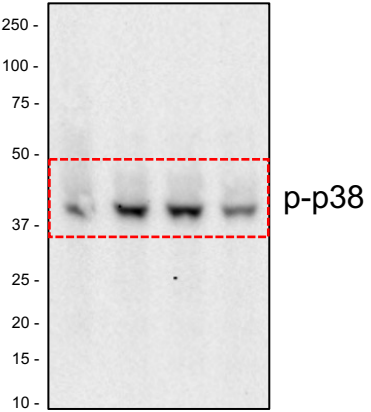


Figure S3G: Original Blots

THP1	MKTR		
-	+	+	KLA 18hr
-	-	+	Nigericin 1hr

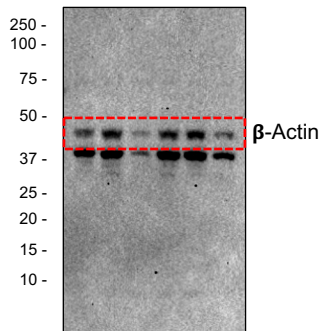
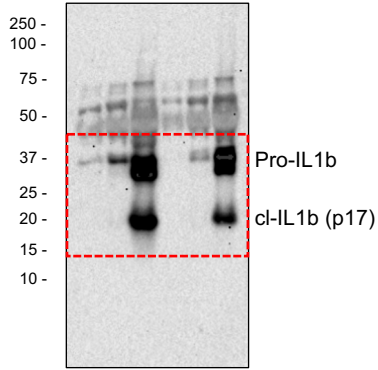
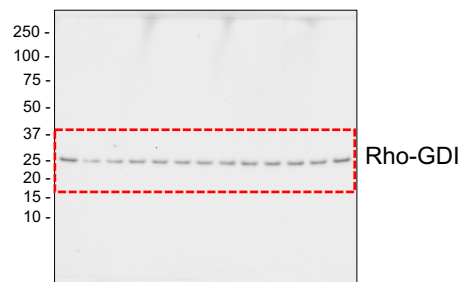
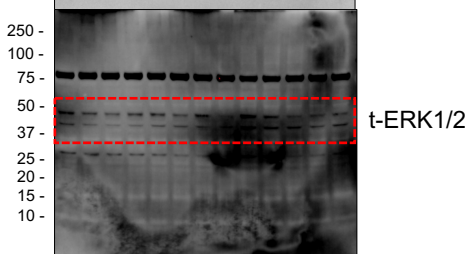
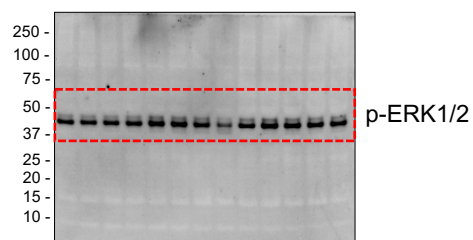
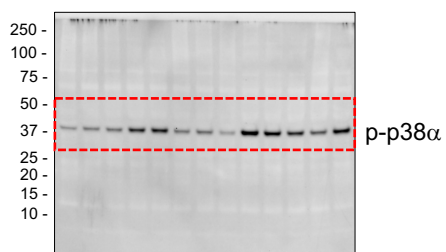
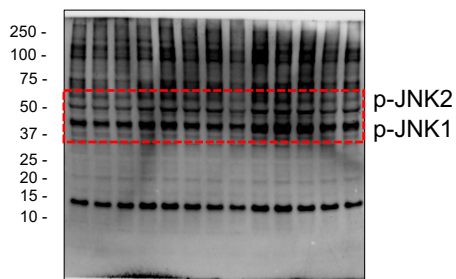


Figure S3H: Original Blots

Nigericin (min): 15
18hr Prime: + + + + + + + + + + + + + + +



Figures S5C: Original Blots

- + CIP
+ + GSDMD-HA
+ + M3K5/JNK2

