

Appendix A.

Table A1. Absolute change of ICRG internal conflict risk score (2020-21) and (log) confirmed COVID-19 death rate per million

| | (1) | (2) | (3) | (4) | (5) | (6) | (7) | (8) |
|----------------------------------|---|---------------------|---------------------|-------------------|--------------------|----------------------|----------------------|--------------------|
| | Dependent variable: <i>Conflict growth (absolute)</i> (point) | | | | | | | |
| <i>COVID_death</i> | 0.042*** (2.63) | 0.044** (2.58) | 0.056** (2.60) | 0.059** (2.27) | 0.065** (2.16) | 0.087*** (2.96) | 0.163*** (3.72) | 0.075*** (2.90) |
| <i>Gov_Support</i> | | -0.001 (-0.37) | 0.009 (0.68) | 0.009 (0.72) | 0.014 (1.25) | 0.020 (1.48) | 0.037** (2.06) | 0.016 (1.45) |
| <i>COVID_death × Gov_support</i> | | | -0.001 (-0.82) | -0.002 (-0.93) | -0.002 (-1.50) | -0.003 (-1.63) | -0.006** (-2.38) | -0.002 (-1.59) |
| <i>Inflation</i> | | | | | 0.008*** (3.65) | 0.005 (0.40) | -0.004 (-0.31) | 0.008*** (4.24) |
| <i>HCI</i> | | | | | -0.146 (-0.31) | -0.066 (-0.11) | 1.289 (1.60) | |
| <i>Oil_rent</i> | | | | | 0.001 (0.27) | -0.034*** (-3.16) | -0.030*** (-2.89) | |
| <i>Urbanization</i> | | | | | 0.002 (0.73) | 0.004 (1.47) | 0.005* (1.84) | |
| <i>log of GDP per capita</i> | | | | | -0.111 (-1.40) | -0.024 (-0.25) | -0.228* (-1.74) | -0.061 (-1.37) |
| <i>Level of conflict 2020</i> | | | | | -0.043 (-1.50) | -0.020 (-0.66) | -0.039 (-1.16) | -0.045 (-1.59) |
| <i>Governance</i> | | | | | 0.057 (0.69) | -0.017 (-0.18) | -0.109 (-1.08) | |
| <i>Stringency index</i> | | | | | 0.004 (1.12) | 0.005 (1.45) | 0.008* (1.98) | |
| <i>Gini index</i> | | | | | | -0.005 (-0.87) | 0.001 (0.14) | |
| <i>Ethnic fractionalization</i> | | | | | | 0.046 (0.27) | -0.055 (-0.32) | |
| <i>Trust in government</i> | | | | | | | 0.004 (1.47) | |
| <i>Trust in science</i> | | | | | | | 0.005 (0.85) | |
| <i>Africa</i> | | | | -0.073 (-0.35) | -0.128 (-0.68) | -0.035 (-0.17) | 0.258 (1.38) | -0.112 (-0.58) |
| <i>Asia</i> | | | | -0.173 (-0.86) | -0.126 (-0.72) | -0.058 (-0.66) | -0.131 (-1.04) | -0.127 (-0.70) |
| <i>Europe</i> | | | | -0.079 (-0.39) | -0.003 (-0.02) | -0.154 (-1.53) | -0.169 (-1.11) | -0.058 (-0.32) |
| <i>North America</i> | | | | -0.118 (-0.56) | -0.144 (-0.79) | -0.319** (-2.64) | -0.372*** (-2.81) | -0.145 (-0.76) |
| <i>South America</i> | | | | -0.097 (-0.41) | -0.121 (-0.56) | -0.176 (-0.98) | -0.281 (-1.49) | -0.091 (-0.41) |
| <i>Constant</i> | -0.237** (-2.26) | -0.237** (-2.23) | -0.314** (-2.21) | -0.223 (-0.80) | 0.693 (0.99) | -0.392 (-0.39) | -0.560 (-0.41) | 0.390 (0.75) |
| Adj. R-squared | 0.046 | 0.039 | 0.036 | 0.014 | 0.062 | 0.085 | 0.141 | 0.087 |
| Countries | 114 | 114 | 114 | 114 | 114 | 85 | 71 | 114 |

The method of estimation is ordinary least squares. *t* statistics based on heteroscedasticity-robust standard errors are reported in parentheses. ***p < 0.01, **p < 0.05, *p < 0.1.

Table A2. Relative change of ICRG internal conflict risk score (2020-21) and (log) confirmed COVID-19 cases per million people

| | (1) | (2) | (3) | (4) | (5) | (6) | (7) | (8) |
|--|--|---------|-----------|---------|----------|------------|------------|----------|
| | Dependent variable: <i>Conflict growth (relative, %)</i> | | | | | | | |
| <i>COVID_case</i> | 0.826* | 0.754 | 1.331** | 1.212 | 1.566* | 1.565* | 5.420*** | 1.916** |
| | (1.94) | (1.57) | (2.18) | (1.60) | (1.80) | (1.71) | (2.68) | (2.48) |
| <i>Gov_Support</i> | | 0.030 | 1.045 | 1.003 | 1.250 | 0.245 | 1.345 | 1.297* |
| | | (0.37) | (1.11) | (1.22) | (1.63) | (0.28) | (1.13) | (1.78) |
| <i>COVID_case</i> × <i>Gov_support</i> | | | -0.091 | -0.092 | -0.112 | -0.024 | -0.121 | -0.114* |
| | | | (-1.10) | (-1.23) | (-1.64) | (-0.31) | (-1.15) | (-1.74) |
| <i>Inflation</i> | | | | | 0.186*** | -0.039 | -0.307 | 0.183*** |
| | | | | | (3.88) | (-0.14) | (-0.86) | (4.61) |
| <i>HCI</i> | | | | | -10.513 | -4.066 | 37.578 | |
| | | | | | (-0.76) | (-0.26) | (1.47) | |
| <i>Oil_rent</i> | | | | | -0.031 | -0.972*** | -0.818** | |
| | | | | | (-0.33) | (-3.38) | (-2.51) | |
| <i>Urbanization</i> | | | | | 0.014 | 0.068 | 0.087 | |
| | | | | | (0.24) | (0.92) | (1.03) | |
| <i>log of GDP per capita</i> | | | | | -1.958 | 0.027 | -7.560* | -2.210 |
| | | | | | (-0.94) | (0.01) | (-1.83) | (-1.62) |
| <i>Level of conflict 2020</i> | | | | | -1.636** | -1.197 | -1.242 | -1.570** |
| | | | | | (-2.00) | (-1.37) | (-1.47) | (-2.11) |
| <i>Governance</i> | | | | | 0.914 | -1.312 | -4.812 | |
| | | | | | (0.48) | (-0.57) | (-1.51) | |
| <i>Stringency index</i> | | | | | 0.089 | 0.109 | 0.103 | |
| | | | | | (1.17) | (1.12) | (0.92) | |
| <i>Gini index</i> | | | | | | -0.139 | -0.094 | |
| | | | | | | (-0.88) | (-0.55) | |
| <i>Ethnic fractionalization</i> | | | | | | 1.930 | -1.455 | |
| | | | | | | (0.42) | (-0.33) | |
| <i>Trust in government</i> | | | | | | | 0.110 | |
| | | | | | | | (1.38) | |
| <i>Trust in science</i> | | | | | | | 0.106 | |
| | | | | | | | (0.70) | |
| <i>Africa</i> | | | | -5.275 | -6.919 | -3.759 | 1.703 | -6.459 |
| | | | | (-0.96) | (-1.29) | (-0.75) | (0.33) | (-1.29) |
| <i>Asia</i> | | | | -7.725 | -6.576 | -3.502 | -8.055** | -6.634 |
| | | | | (-1.48) | (-1.36) | (-1.29) | (-2.26) | (-1.49) |
| <i>Europe</i> | | | | -3.425 | -2.198 | -5.690** | -10.109** | -3.495 |
| | | | | (-0.60) | (-0.42) | (-2.01) | (-2.06) | (-0.71) |
| <i>North America</i> | | | | -5.675 | -7.453 | -10.780*** | -12.749*** | -7.023 |
| | | | | (-0.99) | (-1.39) | (-3.02) | (-3.15) | (-1.39) |
| <i>South America</i> | | | | -4.010 | -4.755 | -4.323 | -8.091* | -4.239 |
| | | | | (-0.64) | (-0.80) | (-0.91) | (-1.71) | (-0.75) |
| <i>Constant</i> | -7.361 | -6.899 | -12.955** | -6.108 | 14.939 | -7.264 | -10.918 | 13.063 |
| | (-1.65) | (-1.46) | (-2.03) | (-0.61) | (0.86) | (-0.26) | (-0.30) | (0.94) |
| Adj. R-squared | 0.022 | 0.015 | 0.027 | 0.033 | 0.081 | 0.066 | 0.081 | 0.110 |
| Countries | 114 | 114 | 114 | 114 | 114 | 85 | 71 | 114 |

The method of estimation is ordinary least squares. *t* statistics based on heteroscedasticity-robust standard errors are reported in parentheses. ***p < 0.01, **p < 0.05, *p < 0.1.

Table A3. Absolute change of ICRG internal conflict risk score (2020-21) and (log) confirmed COVID-19 cases per million people

| | (1) | (2) | (3) | (4) | (5) | (6) | (7) | (8) |
|--|---|-------------------|-------------------|-------------------|--------------------|----------------------|----------------------|--------------------|
| | Dependent variable: <i>Conflict growth (absolute)</i> (point) | | | | | | | |
| <i>COVID_case</i> | 0.027 (1.63) | 0.030* (1.79) | 0.039 (1.59) | 0.036 (1.19) | 0.050 (1.60) | 0.072** (2.42) | 0.217*** (3.30) | 0.065** (2.38) |
| <i>Gov_Support</i> | | -0.001 (-0.42) | 0.015 (0.61) | 0.023 (0.78) | 0.036 (1.49) | 0.027 (0.80) | 0.065 (1.61) | 0.040 (1.66) |
| <i>COVID_case</i> × <i>Gov_support</i> | | | -0.001 (-0.64) | -0.002 (-0.83) | -0.003 (-1.50) | -0.002 (-0.84) | -0.006* (-1.68) | -0.004 (-1.60) |
| <i>Inflation</i> | | | | | 0.009*** (3.67) | 0.004 (0.37) | -0.008 (-0.62) | 0.008*** (4.09) |
| <i>HCI</i> | | | | | -0.204 (-0.41) | -0.024 (-0.04) | 1.572* (1.68) | |
| <i>Oil_rent</i> | | | | | 0.001 (0.16) | -0.035*** (-3.24) | -0.033*** (-3.03) | |
| <i>Urbanization</i> | | | | | 0.001 (0.48) | 0.003 (1.22) | 0.004 (1.39) | |
| <i>log of GDP per capita</i> | | | | | -0.088 (-1.18) | -0.012 (-0.13) | -0.265* (-1.92) | -0.064 (-1.37) |
| <i>Level of conflict 2020</i> | | | | | -0.039 (-1.35) | -0.015 (-0.50) | -0.016 (-0.57) | -0.036 (-1.32) |
| <i>Governance</i> | | | | | 0.043 (0.52) | -0.042 (-0.46) | -0.199* (-1.87) | |
| <i>Stringency index</i> | | | | | 0.005 (1.46) | 0.006 (1.51) | 0.007 (1.58) | |
| <i>Gini index</i> | | | | | | -0.005 (-0.80) | -0.001 (-0.13) | |
| <i>Ethnic fractionalization</i> | | | | | | 0.053 (0.30) | -0.047 (-0.29) | |
| <i>Trust in government</i> | | | | | | | 0.005* (1.71) | |
| <i>Trust in science</i> | | | | | | | 0.006 (1.07) | |
| <i>Africa</i> | | | | -0.029 (-0.15) | -0.074 (-0.40) | -0.041 (-0.19) | 0.237 (1.29) | -0.058 (-0.32) |
| <i>Asia</i> | | | | -0.110 (-0.62) | -0.086 (-0.51) | -0.068 (-0.74) | -0.270** (-2.06) | -0.073 (-0.46) |
| <i>Europe</i> | | | | 0.032 (0.16) | 0.096 (0.49) | -0.131 (-1.37) | -0.278 (-1.66) | 0.044 (0.24) |
| <i>North America</i> | | | | -0.020 (-0.10) | -0.058 (-0.32) | -0.279** (-2.28) | -0.380*** (-2.86) | -0.039 (-0.22) |
| <i>South America</i> | | | | 0.043 (0.19) | 0.005 (0.02) | -0.097 (-0.54) | -0.241 (-1.45) | 0.043 (0.21) |
| <i>Constant</i> | -0.261 (-1.46) | -0.277 (-1.56) | -0.375 (-1.42) | -0.304 (-0.78) | 0.287 (0.42) | -0.749 (-0.72) | -1.528 (-1.22) | 0.096 (0.18) |
| Adj. R-squared | 0.016 | 0.009 | 0.003 | -0.010 | 0.047 | 0.060 | 0.147 | 0.069 |
| Countries | 114 | 114 | 114 | 114 | 114 | 85 | 71 | 114 |

The method of estimation is ordinary least squares. *t* statistics based on heteroscedasticity-robust standard errors are reported in parentheses. ***p < 0.01, **p < 0.05, *p < 0.1.

Table A4. Relative development of ICRG internal conflict risk score (2020-21) and (log) confirmed COVID-19 death per million of population, excluding 13 countries with no change in internal conflict

| | (1) | (2) | (3) | (4) | (5) | (6) | (7) | (8) |
|----------------------------------|--|---------|------------|---------|----------|------------|-----------|----------|
| | Dependent variable: <i>Conflict growth (relative, %)</i> | | | | | | | |
| <i>COVID_death</i> | 1.109** | 1.022* | 1.796*** | 1.931** | 2.298** | 2.543*** | 4.447*** | 2.570*** |
| | (2.14) | (1.75) | (2.95) | (2.62) | (2.51) | (2.96) | (2.78) | (3.26) |
| <i>Gov_Support</i> | | 0.056 | 0.652 | 0.573 | 0.688* | 0.496 | 1.281* | 0.712* |
| | | (0.51) | (1.24) | (1.26) | (1.67) | (1.06) | (2.01) | (1.81) |
| <i>COVID_death × Gov_support</i> | | | -0.092 | -0.090 | -0.104* | -0.068 | -0.172* | -0.102* |
| | | | (-1.23) | (-1.33) | (-1.72) | (-0.98) | (-1.92) | (-1.75) |
| <i>Inflation</i> | | | | | 0.172*** | -0.058 | -0.102 | 0.164*** |
| | | | | | (3.47) | (-0.18) | (-0.31) | (4.93) |
| <i>HCI</i> | | | | | -16.725 | -11.823 | 36.338 | |
| | | | | | (-1.13) | (-0.69) | (1.38) | |
| <i>Oil_rent</i> | | | | | -0.038 | -1.087*** | -0.916** | |
| | | | | | (-0.34) | (-3.52) | (-2.65) | |
| <i>Urbanization</i> | | | | | 0.041 | 0.086 | 0.106 | |
| | | | | | (0.60) | (1.04) | (1.09) | |
| <i>log of GDP per capita</i> | | | | | -2.782 | 0.515 | -6.347 | -2.553* |
| | | | | | (-1.05) | (0.16) | (-1.43) | (-1.81) |
| <i>Level of conflict 2020</i> | | | | | -2.037** | -1.788* | -2.603** | -2.073** |
| | | | | | (-2.19) | (-1.75) | (-2.12) | (-2.35) |
| <i>Governance</i> | | | | | 1.685 | -1.498 | -4.518 | |
| | | | | | (0.69) | (-0.59) | (-1.17) | |
| <i>Stringency index</i> | | | | | 0.073 | 0.090 | 0.134 | |
| | | | | | (0.81) | (0.92) | (1.14) | |
| <i>Gini index</i> | | | | | | -0.071 | 0.051 | |
| | | | | | | (-0.32) | (0.24) | |
| <i>Ethnic fractionalization</i> | | | | | | 1.259 | -1.538 | |
| | | | | | | (0.25) | (-0.30) | |
| <i>Trust in government</i> | | | | | | | 0.055 | |
| | | | | | | | (0.58) | |
| <i>Trust in science</i> | | | | | | | 0.110 | |
| | | | | | | | (0.64) | |
| <i>Africa</i> | | | | -5.682 | -8.284 | -2.735 | 5.516 | -7.101 |
| | | | | (-0.97) | (-1.45) | (-0.45) | (0.68) | (-1.34) |
| <i>Asia</i> | | | | -8.955 | -7.213 | -3.178 | -3.065 | -7.665 |
| | | | | (-1.55) | (-1.37) | (-0.91) | (-0.49) | (-1.56) |
| <i>Europe</i> | | | | -5.132 | -3.657 | -7.084** | -7.276 | -5.730 |
| | | | | (-0.84) | (-0.64) | (-2.12) | (-1.28) | (-1.08) |
| <i>North America</i> | | | | -7.514 | -10.002 | -14.652*** | -13.121** | -9.793* |
| | | | | (-1.18) | (-1.61) | (-2.80) | (-2.07) | (-1.73) |
| <i>South America</i> | | | | -7.218 | -8.684 | -8.099 | -9.140 | -8.104 |
| | | | | (-1.11) | (-1.37) | (-1.47) | (-1.24) | (-1.37) |
| <i>Constant</i> | -5.468 | -5.473* | -10.087*** | -3.870 | 31.131 | -6.351 | 2.393 | 24.242 |
| | (-1.62) | (-1.67) | (-2.73) | (-0.50) | (1.46) | (-0.20) | (0.05) | (1.61) |
| Adj. R-squared | 0.040 | 0.034 | 0.051 | 0.050 | 0.108 | 0.094 | 0.077 | 0.137 |
| Countries | 101 | 101 | 101 | 101 | 101 | 76 | 64 | 101 |

The method of estimation is ordinary least squares. *t* statistics based on heteroscedasticity-robust standard errors are reported in parentheses. ***p < 0.01, **p < 0.05, *p < 0.1. Excluded countries from estimation (with no change in their internal conflict risk evaluation by ICRG): Botswana, Brunei Darussalam, Canada, Egypt, Iceland, Italy, Jamaica, Japan, Jordan, Moldova, Norway, Korea, and Zambia.

Table A5. Absolute change of ICRG civil disorder risk score (2020-21) and (log) confirmed COVID-19 death rate per million

| | (1) | (2) | (3) | (4) | (5) | (6) | (7) | (8) |
|--|---|---------------------|----------------------|--------------------|----------------------|----------------------|----------------------|----------------------|
| | Dependent variable: <i>Civil disorder growth (absolute)</i> (point) | | | | | | | |
| <i>COVID_death</i> | 0.037*** (2.83) | 0.035** (2.56) | 0.048*** (2.91) | 0.066*** (3.19) | 0.066*** (3.22) | 0.085*** (3.65) | 0.134*** (3.34) | 0.076*** (4.13) |
| <i>Gov_Support</i> | | 0.001 (0.70) | 0.012** (2.04) | 0.016* (1.95) | 0.013* (1.70) | 0.010 (0.91) | 0.025 (1.49) | 0.013* (1.80) |
| <i>COVID_death × Gov_support</i> | | | -0.002* (-1.91) | -0.002* (-1.80) | -0.002 (-1.65) | -0.001 (-0.89) | -0.004 (-1.57) | -0.002* (-1.76) |
| <i>Inflation</i> | | | | | 0.003** (2.57) | -0.005 (-0.55) | -0.012 (-1.23) | 0.004*** (3.77) |
| <i>HCI</i> | | | | | -0.095 (-0.26) | -0.008 (-0.02) | 0.787 (1.23) | |
| <i>Oil_rent</i> | | | | | -0.003 (-1.21) | -0.012 (-1.54) | -0.012 (-1.19) | |
| <i>Urbanization</i> | | | | | 0.001 (0.65) | 0.002 (1.14) | 0.003 (1.28) | |
| <i>log of GDP per capita</i> | | | | | -0.070 (-1.49) | -0.081 (-1.09) | -0.178 (-1.55) | -0.102*** (-2.98) |
| <i>Level of civil disorder in 2020</i> | | | | | -0.381*** (-5.18) | -0.385*** (-3.82) | -0.421*** (-3.76) | -0.354*** (-4.93) |
| <i>Governance</i> | | | | | -0.062 (-1.50) | -0.069 (-1.13) | -0.132 (-1.53) | |
| <i>Stringency index</i> | | | | | 0.002 (0.97) | 0.001 (0.37) | 0.002 (0.63) | |
| <i>Gini index</i> | | | | | | -0.008 (-1.66) | -0.003 (-0.73) | |
| <i>Ethnic fractionalization</i> | | | | | | -0.055 (-0.40) | -0.117 (-0.80) | |
| <i>Trust in government</i> | | | | | | | 0.002 (0.83) | |
| <i>Trust in science</i> | | | | | | | 0.002 (0.39) | |
| <i>Africa</i> | | | | 0.065 (0.43) | -0.025 (-0.20) | -0.049 (-0.32) | 0.166 (0.93) | -0.013 (-0.10) |
| <i>Asia</i> | | | | -0.036 (-0.25) | -0.048 (-0.41) | -0.081 (-1.11) | -0.080 (-0.64) | -0.009 (-0.08) |
| <i>Europe</i> | | | | -0.042 (-0.28) | -0.034 (-0.26) | -0.256*** (-2.97) | -0.242* (-1.73) | -0.042 (-0.33) |
| <i>North America</i> | | | | -0.041 (-0.25) | -0.111 (-0.85) | -0.293*** (-3.17) | -0.304** (-2.40) | -0.071 (-0.53) |
| <i>South America</i> | | | | -0.022 (-0.12) | -0.015 (-0.10) | -0.102 (-0.79) | -0.146 (-0.94) | 0.007 (0.04) |
| <i>Constant</i> | -0.186** (-2.30) | -0.185** (-2.30) | -0.270*** (-2.69) | -0.373* (-1.83) | 1.132** (2.41) | 1.503 (1.60) | 1.261 (0.98) | 1.367*** (3.14) |
| Adj. R-squared | 0.065 | 0.060 | 0.064 | 0.044 | 0.233 | 0.235 | 0.258 | 0.249 |
| Countries | 114 | 114 | 114 | 114 | 114 | 85 | 71 | 114 |

The method of estimation is ordinary least squares. *t* statistics based on heteroscedasticity-robust standard errors are reported in parentheses. ***p < 0.01, **p < 0.05, *p < 0.1.

Table A6. Relative change of ICRG civil disorder risk score (2020-21) and (log) confirmed COVID-19 cases per million people

| | (1) | (2) | (3) | (4) | (5) | (6) | (7) | (8) |
|--|--|----------------------|----------------------|--------------------|-----------------------|-----------------------|-----------------------|-----------------------|
| | Dependent variable: <i>Civil disorder growth</i> (relative, %) | | | | | | | |
| <i>COVID_case</i> | 1.415*** (3.01) | 1.275** (2.48) | 1.546** (2.33) | 1.930** (2.23) | 1.830** (2.03) | 2.513** (2.26) | 6.684** (2.57) | 2.339*** (2.83) |
| <i>Gov_Support</i> | | 0.058 (0.81) | 0.535 (0.73) | 0.662 (0.81) | 0.393 (0.52) | -0.330 (-0.30) | 1.592 (1.05) | 0.369 (0.53) |
| <i>COVID_case</i> × <i>Gov_support</i> | | | -0.043 (-0.66) | -0.054 (-0.75) | -0.034 (-0.52) | 0.029 (0.29) | -0.141 (-1.05) | -0.032 (-0.53) |
| <i>Inflation</i> | | | | | 0.134*** (2.87) | -0.316 (-0.83) | -0.686 (-1.54) | 0.172*** (4.50) |
| <i>HCI</i> | | | | | -12.096 (-0.71) | -2.751 (-0.13) | 42.509 (1.23) | |
| <i>Oil_rent</i> | | | | | -0.215* (-1.79) | -0.705* (-1.96) | -0.720 (-1.48) | |
| <i>Urbanization</i> | | | | | 0.021 (0.34) | 0.056 (0.73) | 0.072 (0.74) | |
| <i>log of GDP per capita</i> | | | | | -2.197 (-1.09) | -2.592 (-0.87) | -8.279* (-1.83) | -4.852*** (-3.09) |
| <i>Level of civil disorder 2020</i> | | | | | -18.293*** (-5.99) | -19.784*** (-4.62) | -18.463*** (-3.83) | -16.466*** (-5.47) |
| <i>Governance</i> | | | | | -2.953 (-1.64) | -4.900* (-1.83) | -9.079** (-2.28) | |
| <i>Stringency index</i> | | | | | 0.117 (1.53) | 0.043 (0.35) | 0.053 (0.37) | |
| <i>Gini index</i> | | | | | | -0.296 (-1.42) | -0.211 (-1.05) | |
| <i>Ethnic fractionalization</i> | | | | | | -1.039 (-0.17) | -3.535 (-0.55) | |
| <i>Trust in government</i> | | | | | | | 0.117 (1.05) | |
| <i>Trust in science</i> | | | | | | | 0.077 (0.46) | |
| <i>Africa</i> | | | | -0.560 (-0.08) | -4.496 (-0.75) | -5.474 (-0.78) | 5.036 (0.65) | -3.757 (-0.67) |
| <i>Asia</i> | | | | -4.542 (-0.70) | -5.004 (-0.95) | -5.990* (-1.92) | -8.082* (-1.71) | -2.923 (-0.59) |
| <i>Europe</i> | | | | -2.647 (-0.39) | -1.849 (-0.33) | -11.236*** (-3.62) | -13.392** (-2.41) | -2.069 (-0.39) |
| <i>North America</i> | | | | -3.333 (-0.46) | -6.723 (-1.16) | -13.498*** (-3.24) | -14.196*** (-2.75) | -4.044 (-0.71) |
| <i>South America</i> | | | | -0.629 (-0.07) | 0.114 (0.02) | -2.120 (-0.36) | -3.905 (-0.61) | 1.730 (0.24) |
| <i>Constant</i> | -12.239** (-2.52) | -11.348** (-2.25) | -14.191** (-2.12) | -15.621 (-1.28) | 50.288** (2.28) | 65.336 (1.60) | 31.992 (0.61) | 64.739*** (3.11) |
| Adj. R-squared | 0.052 | 0.047 | 0.042 | 0.019 | 0.258 | 0.280 | 0.277 | 0.252 |
| Countries | 114 | 114 | 114 | 114 | 114 | 85 | 71 | 114 |

The method of estimation is ordinary least squares. *t* statistics based on heteroscedasticity-robust standard errors are reported in parentheses. ****p* < 0.01, ***p* < 0.05, **p* < 0.1.

Table A7. Absolute change of ICRG civil disorder risk score (2020-21) and (log) confirmed COVID-19 cases per million people

| | (1) | (2) | (3) | (4) | (5) | (6) | (7) | (8) |
|---|---------------------|---------------------|--------------------|-------------------|----------------------|----------------------|----------------------|----------------------|
| Dependent variable: <i>Civil disorder growth (absolute)</i> (point) | | | | | | | | |
| <i>COVID_case</i> | 0.030*** (2.65) | 0.028** (2.31) | 0.032* (1.96) | 0.045** (2.04) | 0.048** (2.21) | 0.066** (2.60) | 0.168*** (2.74) | 0.058*** (2.81) |
| <i>Gov_Support</i> | | 0.001 (0.52) | 0.008 (0.53) | 0.013 (0.69) | 0.010 (0.57) | 0.001 (0.02) | 0.043 (1.20) | 0.010 (0.58) |
| <i>COVID_case</i> × <i>Gov_support</i> | | | -0.001 (-0.49) | -0.001 (-0.62) | -0.001 (-0.54) | -0.000 (-0.01) | -0.004 (-1.20) | -0.001 (-0.55) |
| <i>Inflation</i> | | | | 0.051 (0.31) | -0.031 (-0.22) | -0.056 (-0.33) | 0.185 (1.05) | -0.020 (-0.14) |
| <i>HCI</i> | | | | -0.043 (-0.28) | -0.066 (-0.52) | -0.095 (-1.31) | -0.164 (-1.53) | -0.007 (-0.05) |
| <i>Oil_rent</i> | | | | -0.031 (-0.19) | -0.023 (-0.17) | -0.238*** (-3.19) | -0.300** (-2.30) | -0.016 (-0.12) |
| <i>Urbanization</i> | | | | -0.017 (-0.10) | -0.094 (-0.69) | -0.260*** (-2.80) | -0.293** (-2.59) | -0.031 (-0.22) |
| log of GDP per capita | | | | 0.039 (0.19) | 0.041 (0.25) | -0.023 (-0.16) | -0.082 (-0.57) | 0.085 (0.49) |
| <i>Level of civil disorder 2020</i> | | | | | 0.003** (2.62) | -0.006 (-0.65) | -0.016 (-1.49) | 0.004*** (3.81) |
| <i>Governance</i> | | | | | -0.087 (-0.22) | 0.059 (0.11) | 1.024 (1.29) | |
| <i>Stringency index</i> | | | | | -0.004 (-1.44) | -0.015* (-1.73) | -0.016 (-1.43) | |
| <i>Gini index</i> | | | | | 0.001 (0.42) | 0.002 (0.83) | 0.002 (0.86) | |
| <i>Ethnic fractionalization</i> | | | | | -0.061 (-1.29) | -0.071 (-0.98) | -0.198* (-1.84) | -0.107*** (-2.94) |
| <i>Trust in government</i> | | | | | -0.377*** (-5.02) | -0.387*** (-3.70) | -0.385*** (-3.14) | -0.336*** (-4.59) |
| <i>Trust in science</i> | | | | | -0.078* (-1.81) | -0.110 (-1.67) | -0.215** (-2.33) | |
| <i>Africa</i> | | | | | 0.003 (1.45) | 0.002 (0.56) | 0.002 (0.52) | |
| <i>Asia</i> | | | | | | -0.007 (-1.44) | -0.005 (-0.96) | |
| <i>Europe</i> | | | | | | -0.051 (-0.35) | -0.105 (-0.70) | |
| <i>North America</i> | | | | | | | 0.003 (1.03) | |
| <i>South America</i> | | | | | | | 0.003 (0.65) | |
| <i>Constant</i> | -0.272** (-2.25) | -0.260** (-2.10) | -0.303* (-1.79) | -0.431 (-1.44) | 0.908* (1.73) | 1.196 (1.23) | 0.398 (0.32) | 1.240** (2.51) |
| Adj. R-squared | 0.045 | 0.037 | 0.030 | 0.005 | 0.202 | 0.202 | 0.252 | 0.202 |
| Countries | 114 | 114 | 114 | 114 | 114 | 85 | 71 | 114 |

The method of estimation is ordinary least squares. *t* statistics based on heteroscedasticity-robust standard errors are reported in parentheses. ***p < 0.01, **p < 0.05, *p < 0.1.

Table A8. Relative development of ICRG civil disorder risk score (2020-21) and (log) confirmed COVID-19 death per million of population, excluding 17 countries with no change in civil disorder

| | (1) | (2) | (3) | (4) | (5) | (6) | (7) | (8) |
|--|--|---------------------|-----------------------|---------------------|-----------------------|-----------------------|-----------------------|-----------------------|
| | Dependent variable: <i>Civil disorder growth (relative, %)</i> | | | | | | | |
| <i>COVID_death</i> | 1.799*** (2.94) | 1.680** (2.53) | 2.540*** (3.42) | 3.251*** (3.57) | 3.298*** (3.58) | 4.188*** (4.52) | 5.584*** (2.94) | 3.638*** (4.13) |
| <i>Gov_Support</i> | | 0.064 (0.76) | 0.754*** (2.66) | 0.877** (2.38) | 0.653* (1.80) | 0.515 (0.93) | 1.612* (1.85) | 0.588* (1.80) |
| <i>COVID_death × Gov_support</i> | | | -0.102** (-2.51) | -0.119** (-2.29) | -0.088* (-1.73) | -0.071 (-0.92) | -0.224* (-1.89) | -0.082* (-1.84) |
| <i>Inflation</i> | | | | | 0.111** (2.25) | -0.471 (-1.05) | -0.709 (-1.48) | 0.149*** (4.25) |
| <i>HCI</i> | | | | | -13.012 (-0.69) | -5.960 (-0.26) | 55.385 (1.57) | |
| <i>Oil_rent</i> | | | | | -0.205 (-1.15) | -1.018*** (-2.69) | -0.991* (-1.99) | |
| <i>Urbanization</i> | | | | | 0.023 (0.36) | 0.056 (0.70) | 0.072 (0.71) | |
| <i>log of GDP per capita</i> | | | | | -1.949 (-0.70) | -0.854 (-0.25) | -4.668 (-0.96) | -4.732*** (-2.75) |
| <i>Level of civil disorder in 2020</i> | | | | | -19.503*** (-6.38) | -21.268*** (-4.81) | -21.698*** (-4.60) | -18.536*** (-6.02) |
| <i>Governance</i> | | | | | -3.237 (-1.35) | -4.542 (-1.53) | -10.474** (-2.28) | |
| <i>Stringency index</i> | | | | | 0.052 (0.60) | 0.014 (0.12) | 0.054 (0.36) | |
| <i>Gini index</i> | | | | | | -0.482* (-1.74) | -0.338 (-1.28) | |
| <i>Ethnic fractionalization</i> | | | | | | -2.209 (-0.37) | -4.731 (-0.76) | |
| <i>Trust in government</i> | | | | | | | 0.070 (0.61) | |
| <i>Trust in science</i> | | | | | | | 0.101 (0.54) | |
| <i>Africa</i> | | | | 1.299 (0.21) | -2.622 (-0.49) | 2.749 (0.38) | 16.961* (1.69) | -1.802 (-0.39) |
| <i>Asia</i> | | | | -4.041 (-0.65) | -4.734 (-0.96) | -2.417 (-0.60) | 1.167 (0.15) | -2.998 (-0.68) |
| <i>Europe</i> | | | | -2.851 (-0.42) | -4.181 (-0.72) | -13.647*** (-3.08) | -9.685 (-1.37) | -4.242 (-0.86) |
| <i>North America</i> | | | | -3.845 (-0.53) | -7.727 (-1.34) | -11.656** (-2.11) | -6.792 (-0.90) | -5.115 (-0.96) |
| <i>South America</i> | | | | -1.321 (-0.14) | -1.331 (-0.18) | -0.323 (-0.04) | 4.668 (0.51) | -0.757 (-0.10) |
| <i>Constant</i> | -8.216** (-2.18) | -8.131** (-2.18) | -13.477*** (-3.17) | -15.802* (-1.86) | 53.665** (2.20) | 61.343 (1.42) | 30.511 (0.52) | 71.002*** (3.65) |
| Adj. R-squared | 0.074 | 0.069 | 0.085 | 0.063 | 0.306 | 0.355 | 0.351 | 0.323 |
| Countries | 97 | 97 | 97 | 97 | 97 | 74 | 62 | 97 |

The method of estimation is ordinary least squares. *t* statistics based on heteroscedasticity-robust standard errors are reported in parentheses. ****p* < 0.01, ***p* < 0.05, **p* < 0.1.

Appendix B.

Table B1. List of 114 countries in Model 8 of Table 3

| | | | | | |
|-------------------|--------------------|---------------|------------------|--------------------|----------------------|
| Albania | Costa Rica | Haiti | Luxembourg | Philippines | Tanzania |
| Algeria | Cote d'Ivoire | Honduras | Madagascar | Poland | Thailand |
| Australia | Croatia | Hong Kong SAR | Malawi | Portugal | Togo |
| Austria | Cyprus | Hungary | Malaysia | Qatar | Trinidad and Tobago |
| Azerbaijan | Czech Republic | Iceland | Mali | Romania | Tunisia |
| Bahrain | Denmark | India | Malta | Russian Federation | Turkey |
| Bangladesh | Dominican Republic | Indonesia | Mexico | Saudi Arabia | Uganda |
| Belarus | Ecuador | Iraq | Moldova | Senegal | Ukraine |
| Belgium | Egypt | Ireland | Mongolia | Serbia | United Arab Emirates |
| Botswana | El Salvador | Israel | Morocco | Sierra Leone | United Kingdom |
| Brazil | Estonia | Italy | Netherlands | Singapore | United States |
| Brunei Darussalam | Finland | Jamaica | New Zealand | Slovak Republic | Uruguay |
| Bulgaria | France | Japan | Nicaragua | Slovenia | Vietnam |
| Burkina Faso | Gabon | Jordan | Norway | South Africa | Zambia |
| Cameroon | Gambia | Kazakhstan | Oman | Korea | |
| Canada | Germany | Kenya | Pakistan | Spain | |
| Chile | Ghana | Kuwait | Panama | Sri Lanka | |
| China | Greece | Latvia | Papua New Guinea | Sudan | |
| Colombia | Guatemala | Lebanon | Paraguay | Sweden | |
| Congo | Guinea | Lithuania | Peru | Switzerland | |

Table B2. List of 110 countries in Model 1 of Table 4

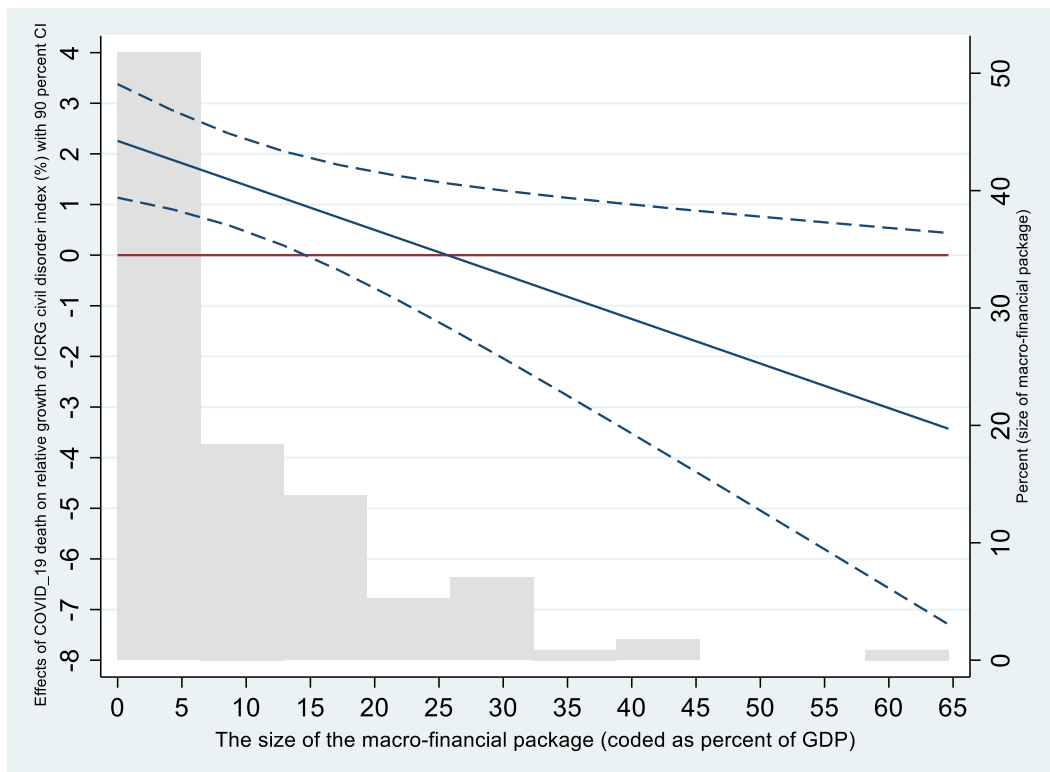
| | | | | | |
|-------------------|--------------------|---------------|------------------|---------------------|----------------------|
| Albania | Cote d'Ivoire | Honduras | Malawi | Qatar | Tunisia |
| Algeria | Croatia | Hong Kong SAR | Malaysia | Romania | Turkey |
| Austria | Cyprus | Hungary | Mali | Russian Federation | Uganda |
| Azerbaijan | Czech Republic | India | Malta | Saudi Arabia | Ukraine |
| Bahrain | Denmark | Indonesia | Mexico | Senegal | United Arab Emirates |
| Bangladesh | Dominican Republic | Iraq | Moldova | Serbia | United Kingdom |
| Belarus | Ecuador | Ireland | Mongolia | Singapore | United States |
| Belgium | Egypt | Israel | Morocco | Slovak Republic | Uruguay |
| Botswana | El Salvador | Italy | Netherlands | Slovenia | Vietnam |
| Brazil | Estonia | Jamaica | Nicaragua | South Africa | Zambia |
| Brunei Darussalam | Finland | Japan | Norway | Korea | |
| Bulgaria | France | Jordan | Oman | Spain | |
| Burkina Faso | Gabon | Kazakhstan | Pakistan | Sri Lanka | |
| Cameroon | Gambia | Kenya | Panama | Sudan | |
| Canada | Germany | Kuwait | Papua New Guinea | Sweden | |
| Chile | Ghana | Latvia | Paraguay | Switzerland | |
| China | Greece | Lebanon | Peru | Tanzania | |
| Colombia | Guatemala | Lithuania | Philippines | Thailand | |
| Congo | Guinea | Luxembourg | Poland | Togo | |
| Costa Rica | Haiti | Madagascar | Portugal | Trinidad and Tobago | |

Appendix C.

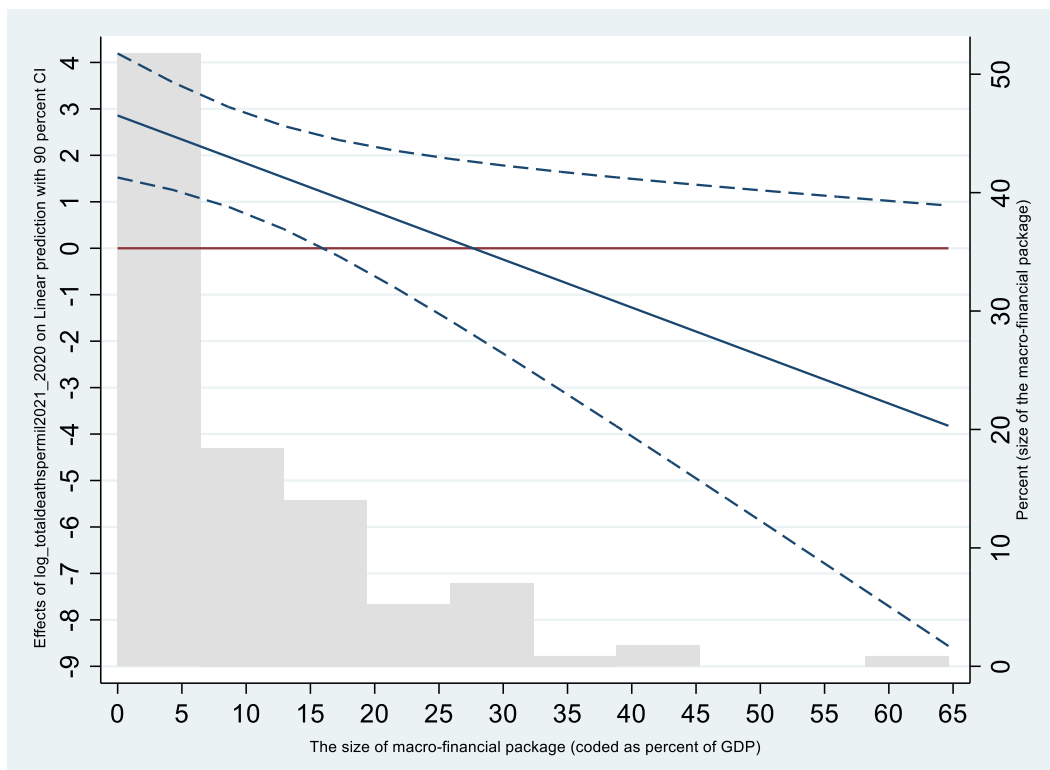
C1. Marginal plots related to Table 3

Relative change in civil disorder index

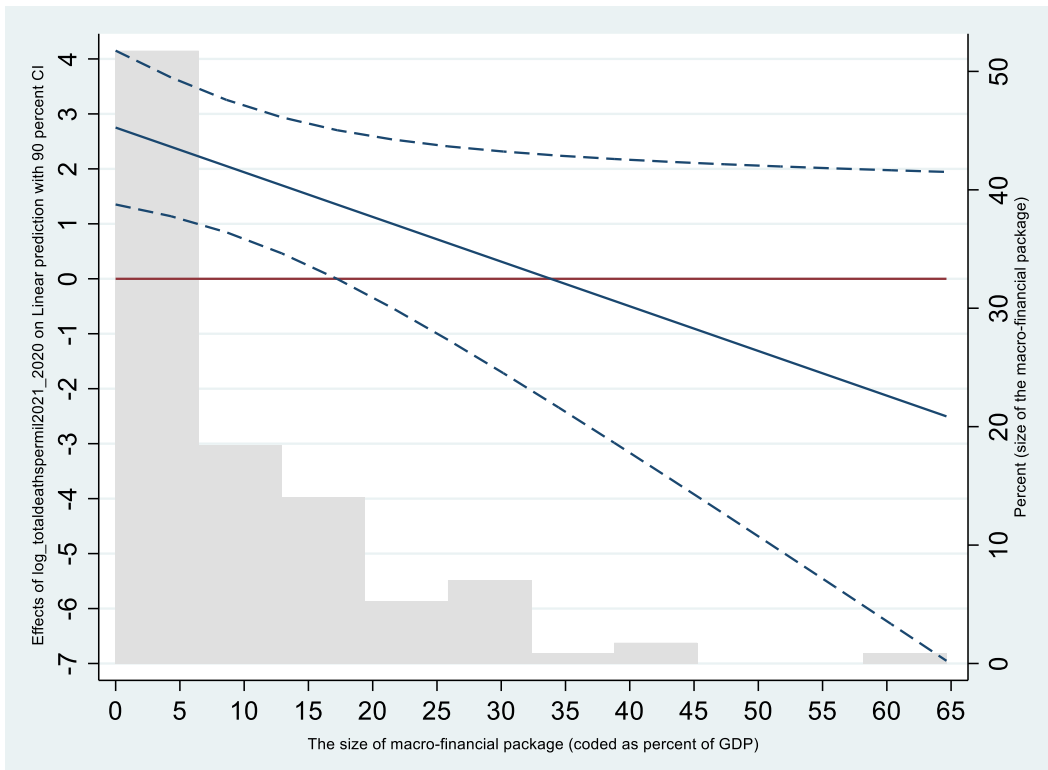
Marginal plot (Model 3, Table 3)



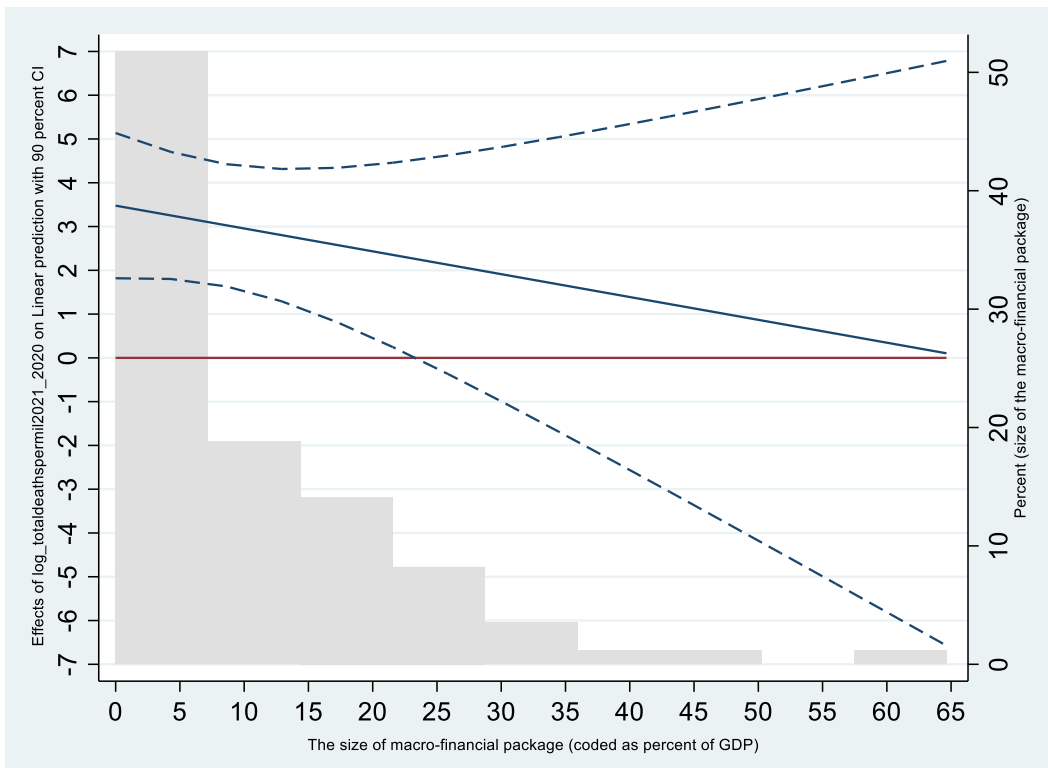
Marginal plot (Model 4, Table 3)



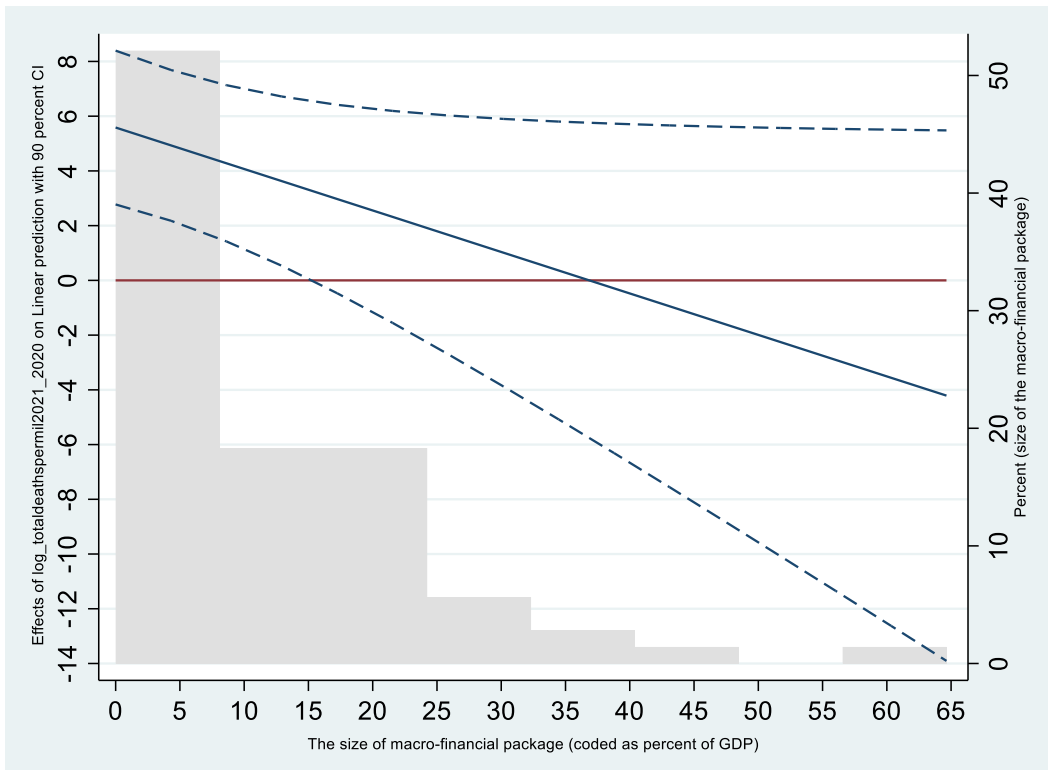
Marginal plot (Model 5, Table 3)



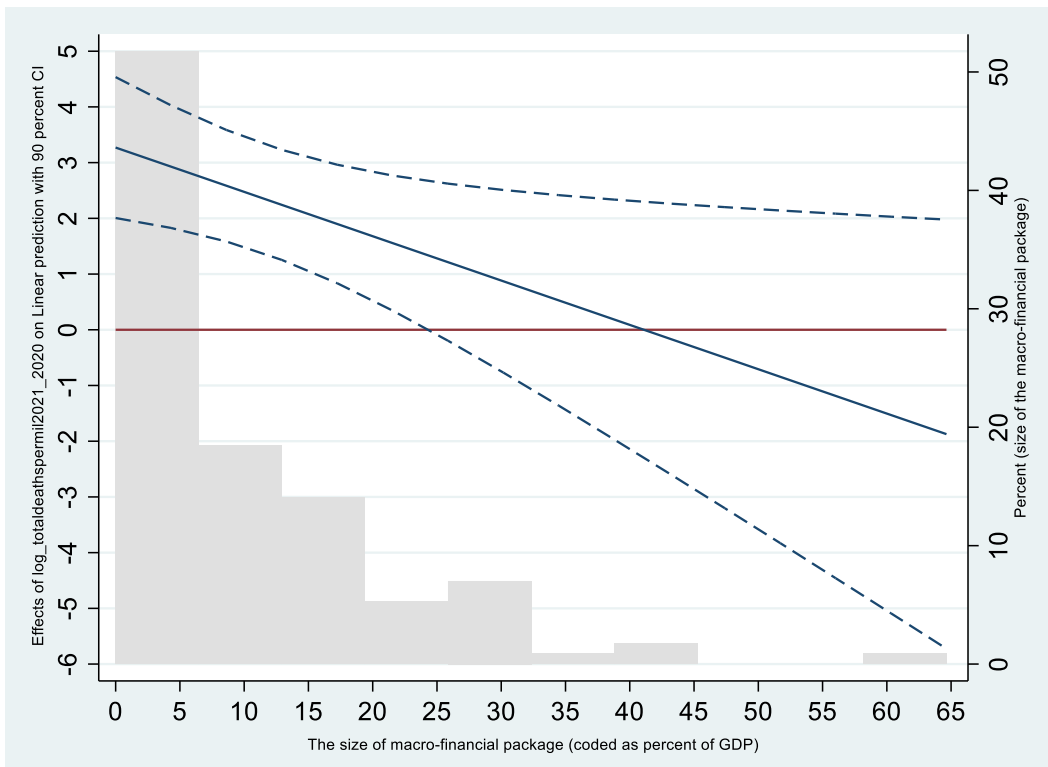
Marginal plot (Model 6, Table 3)



Marginal plot (Model 7, Table 3)



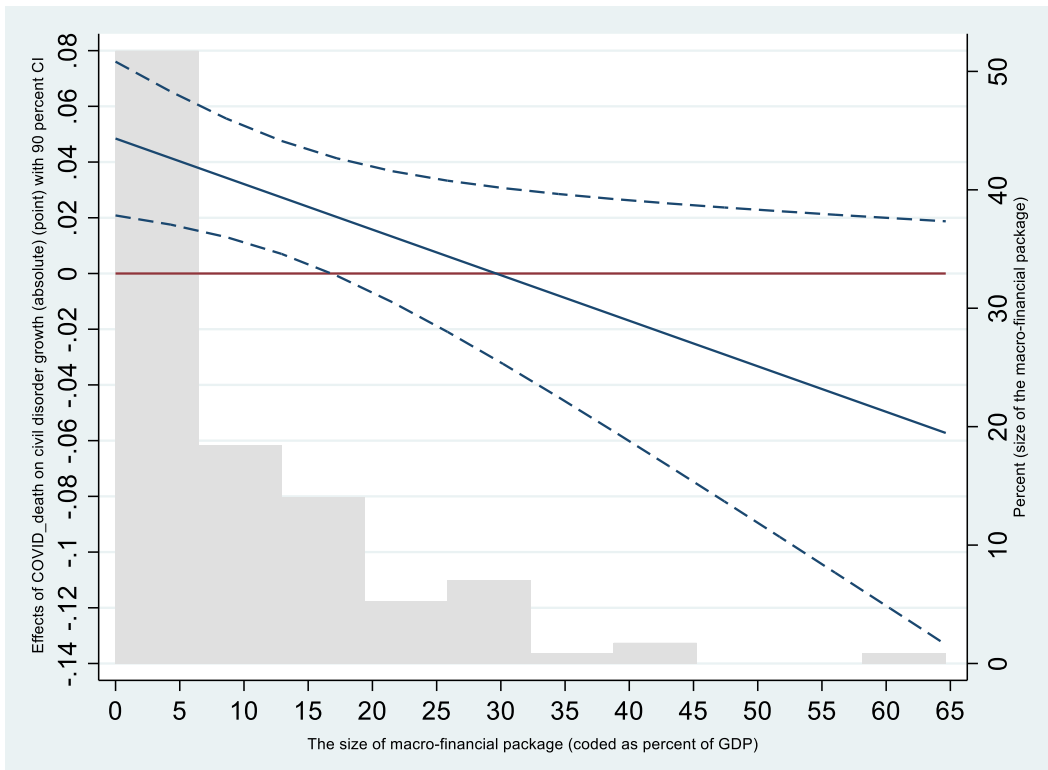
Marginal plot (Model 8, Table 3)



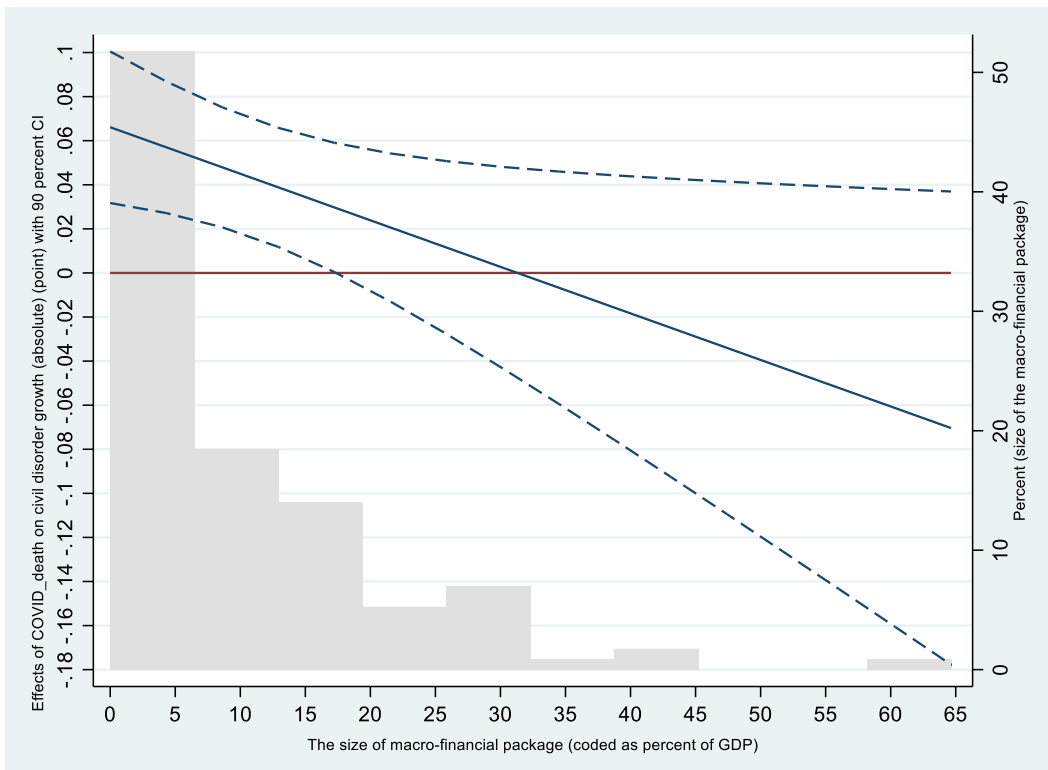
C2. Marginal plots related to Table A5 in the Appendix

Absolute change in civil disorder index

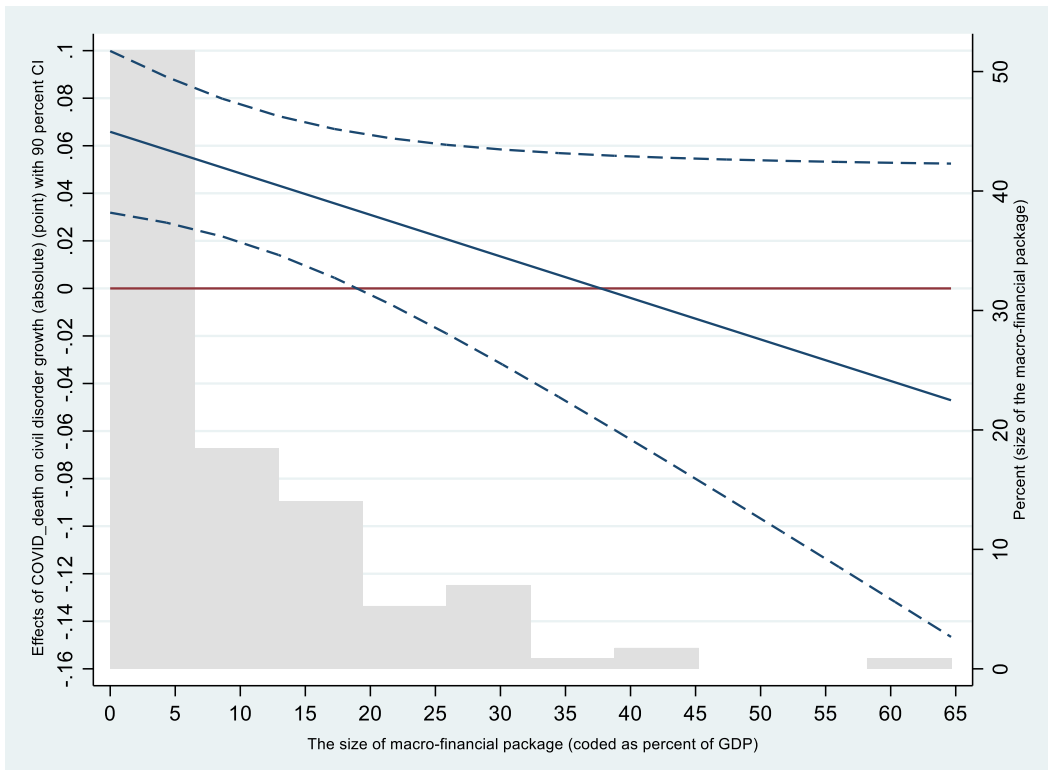
Marginal plot (Model 3, Table A5)



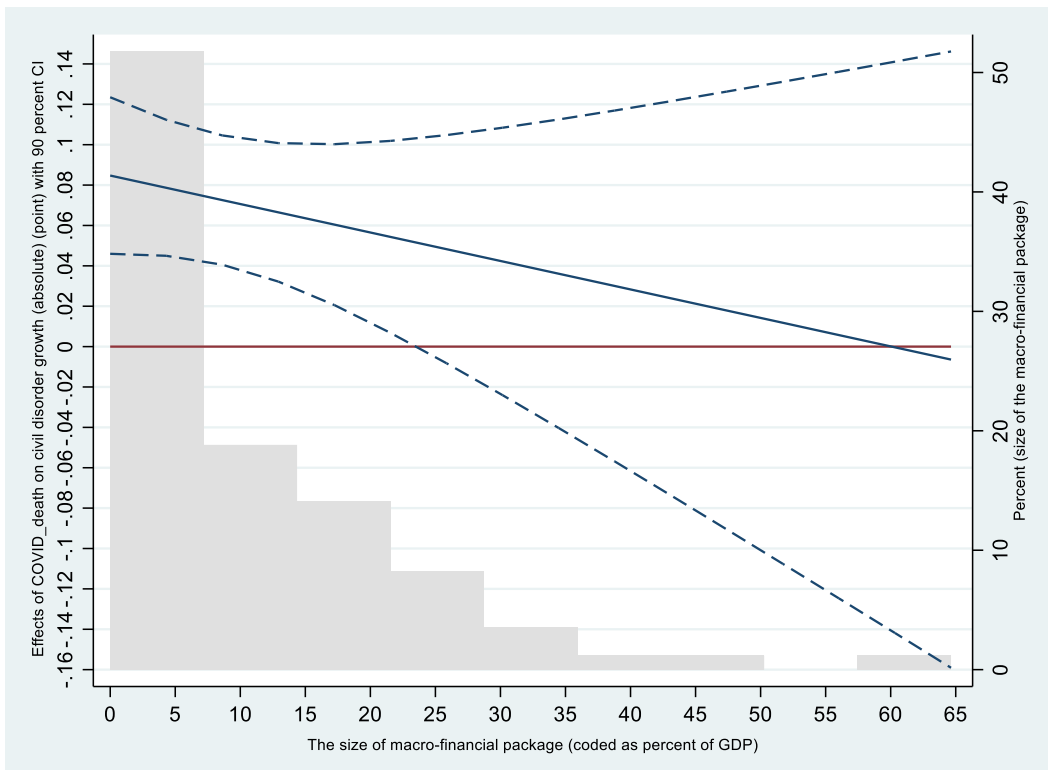
Marginal plot (Model 4, Table A5)



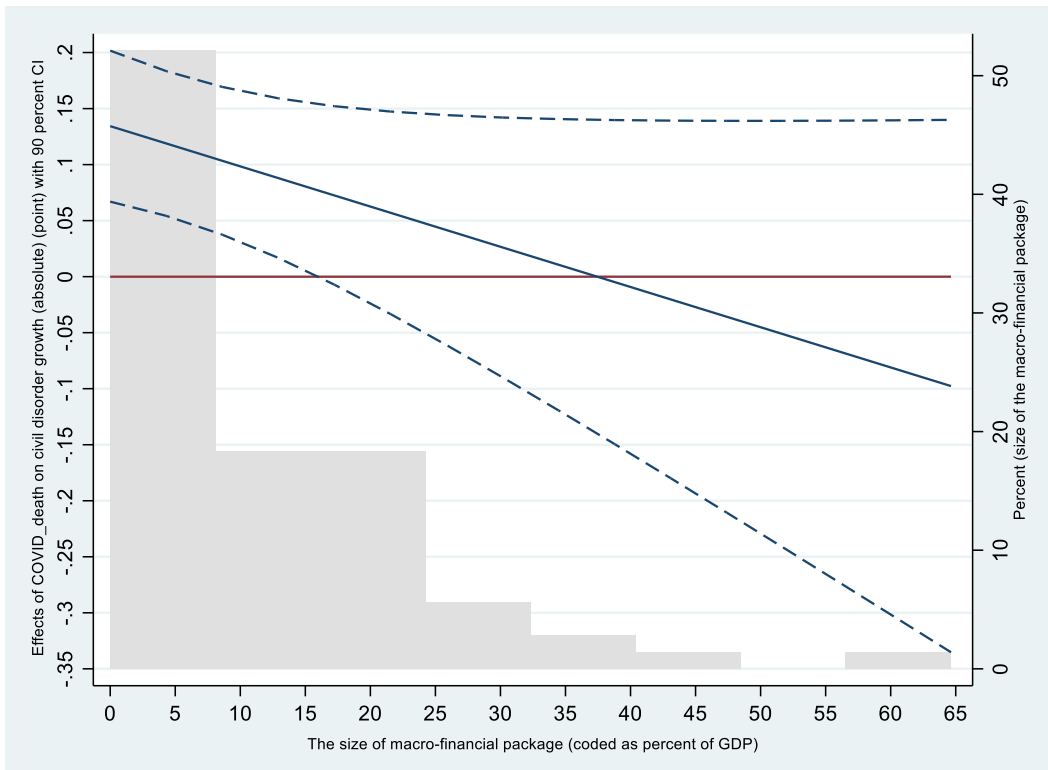
Marginal plot (Model 5, Table A5)



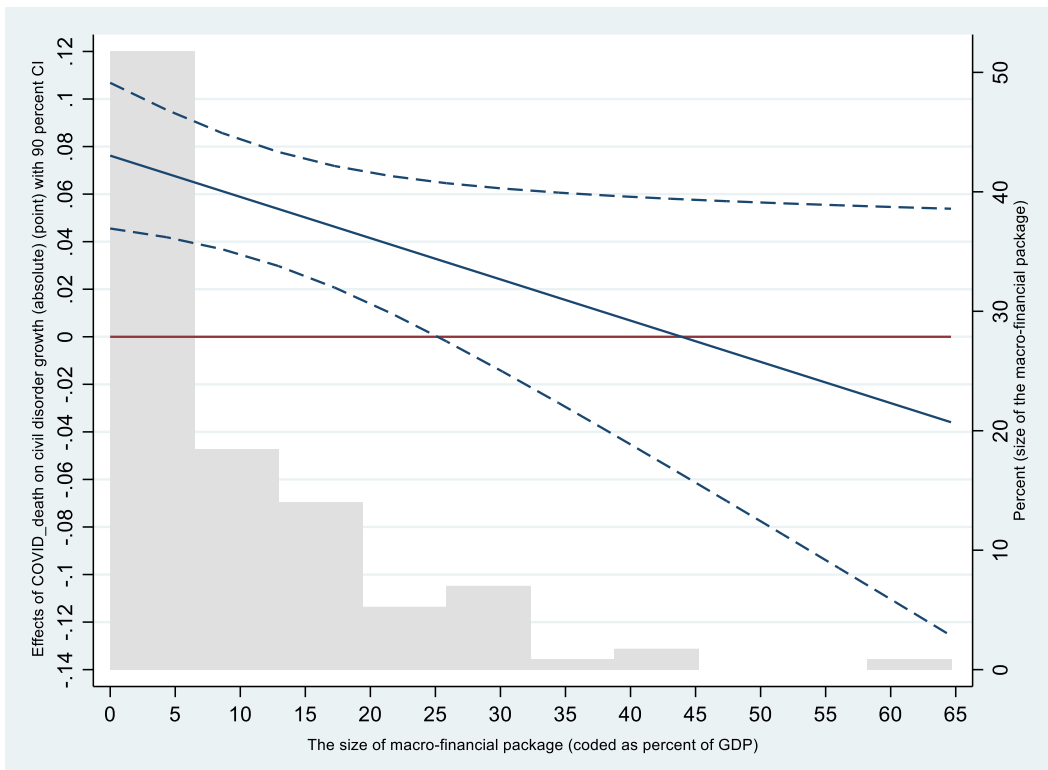
Marginal plot (Model 6, Table A5)



Marginal plot (Model 7, Table A5)



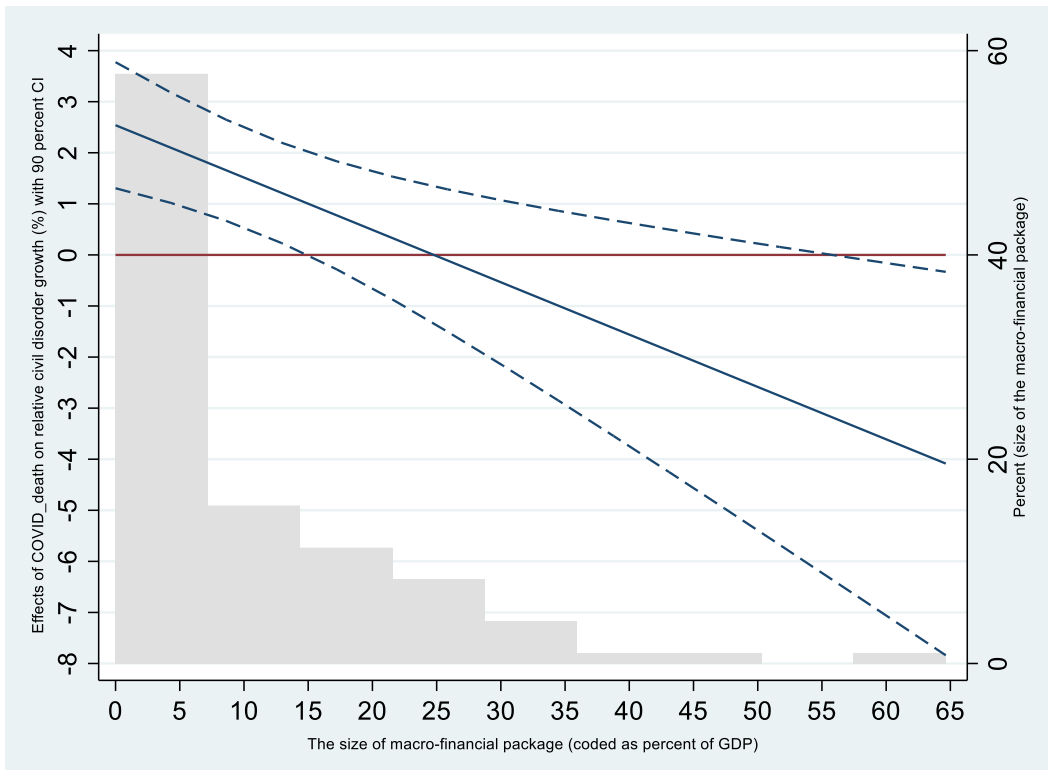
Marginal plot (Model 8, Table A5)



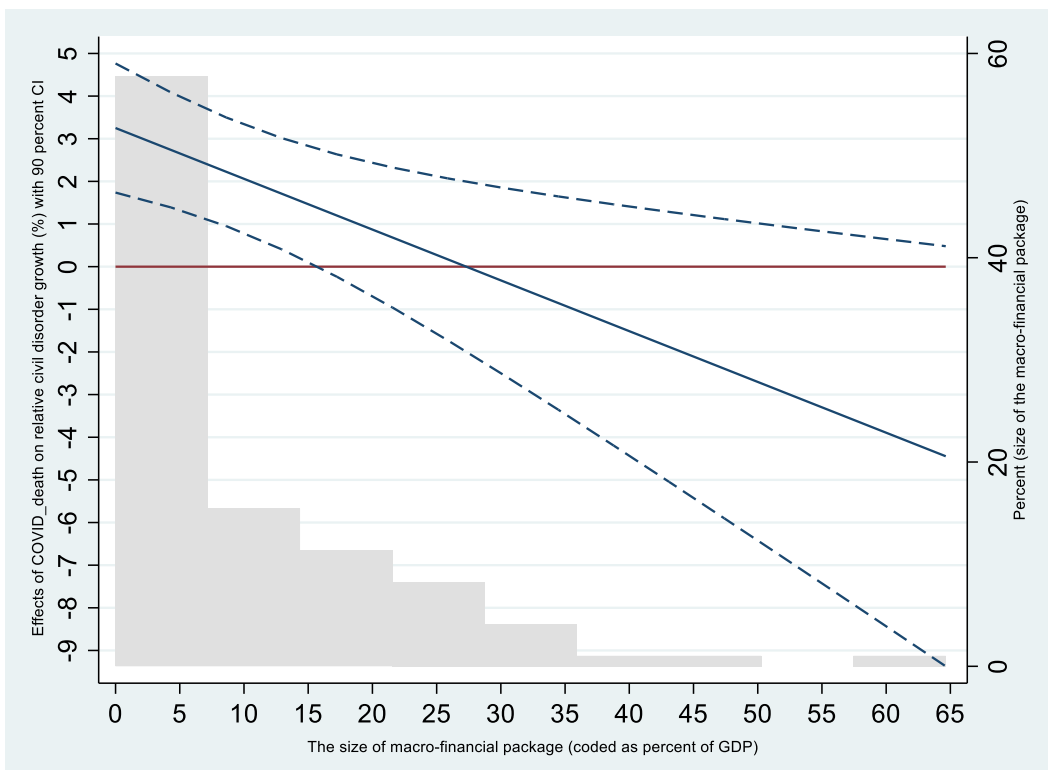
C3. Marginal plots related to Table A8

Relative change in civil disorder, excluding 17 countries with no change in their civil disorder index during the pandemic

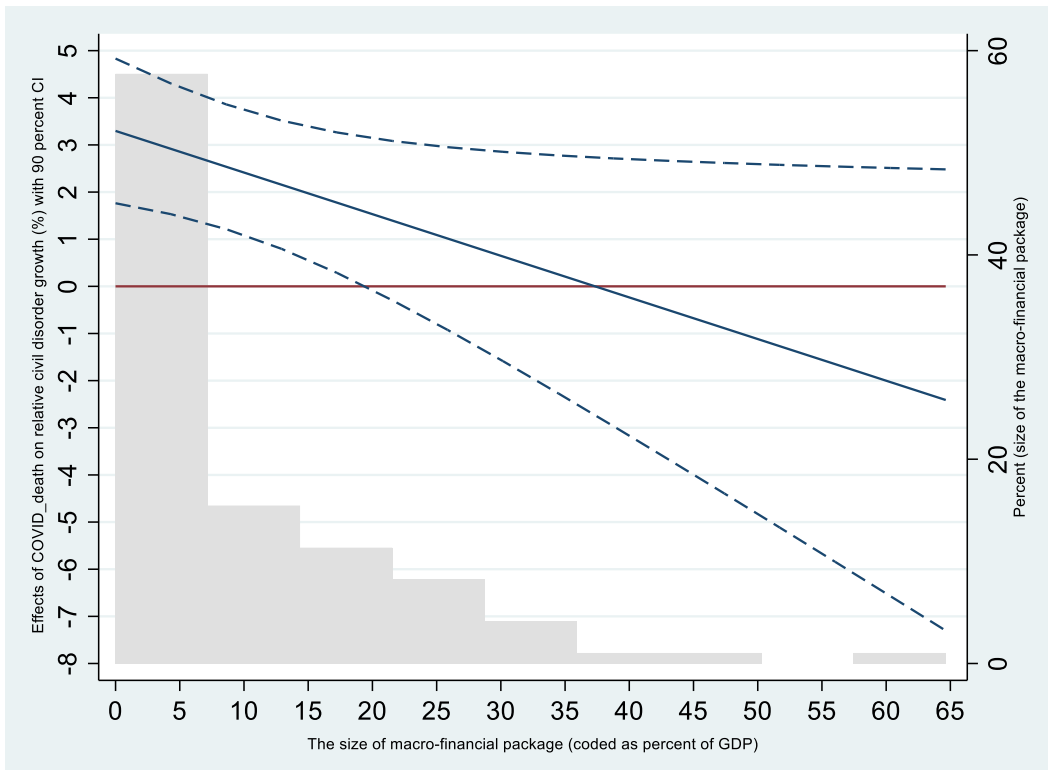
Marginal plot (Model 3, Table A8)



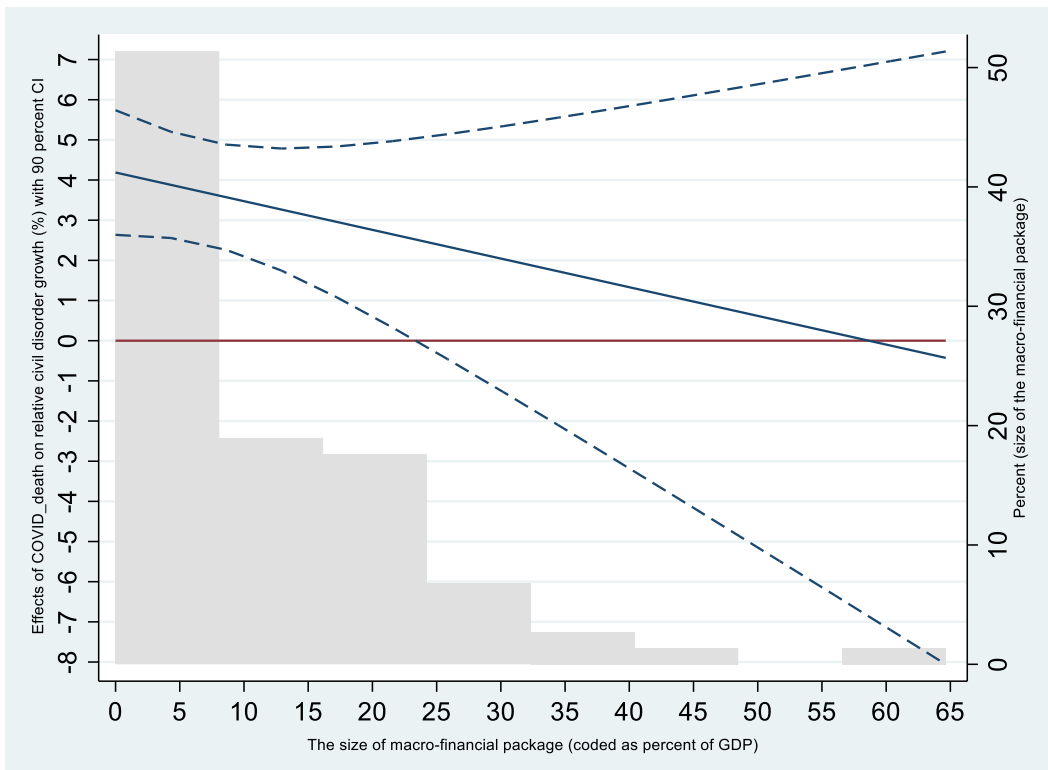
Marginal plot (Model 4, Table A8)



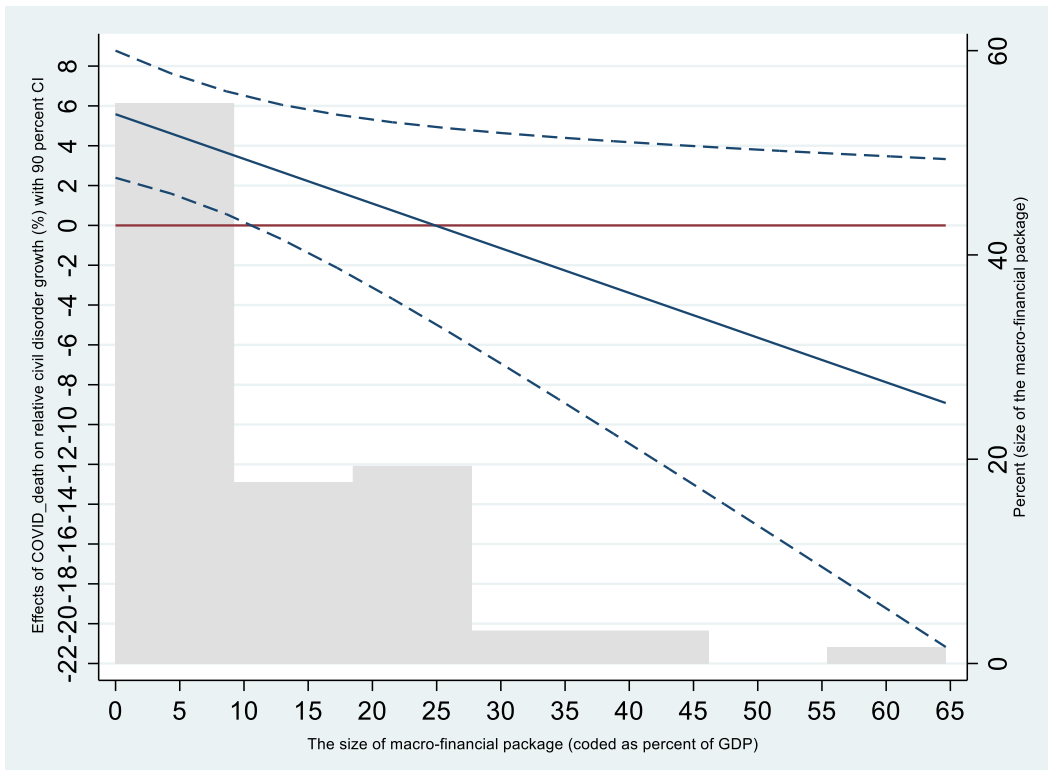
Marginal plot (Model 5, Table A8)



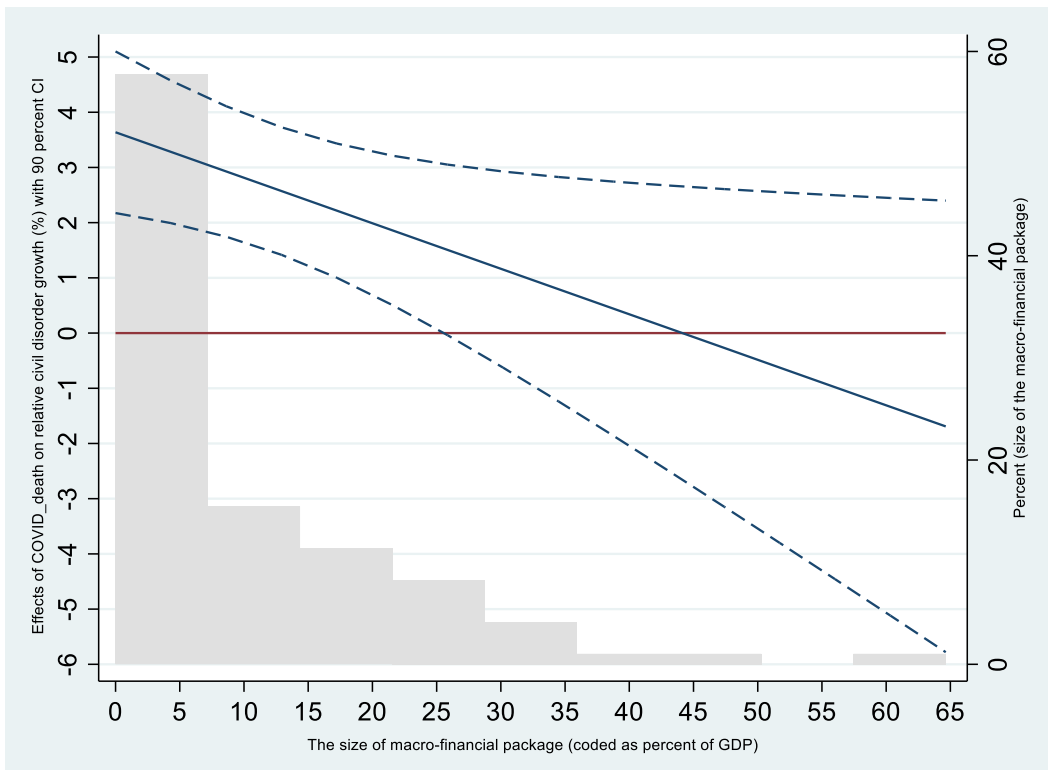
Marginal plot (Model 6, Table A8)



Marginal plot (Model 7, Table A8)



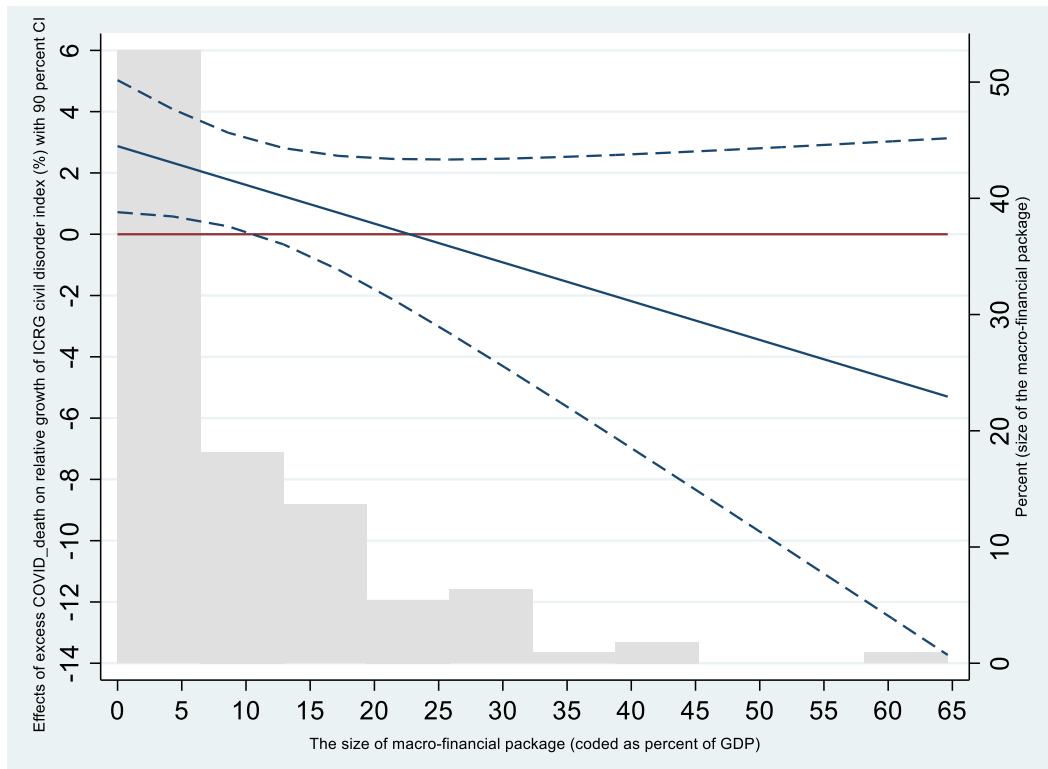
Marginal plot (Model 8, Table A8)



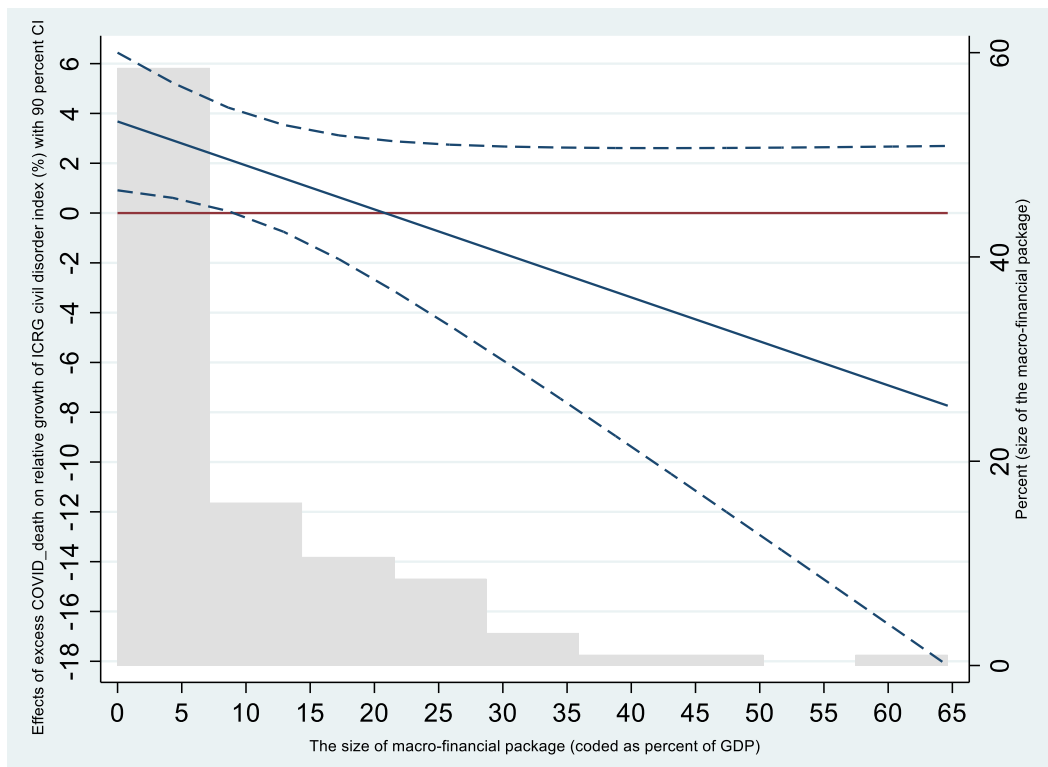
C4. Marginal plots related to Table 4

Relative and absolute change in civil disorder & excess COVID-19 death

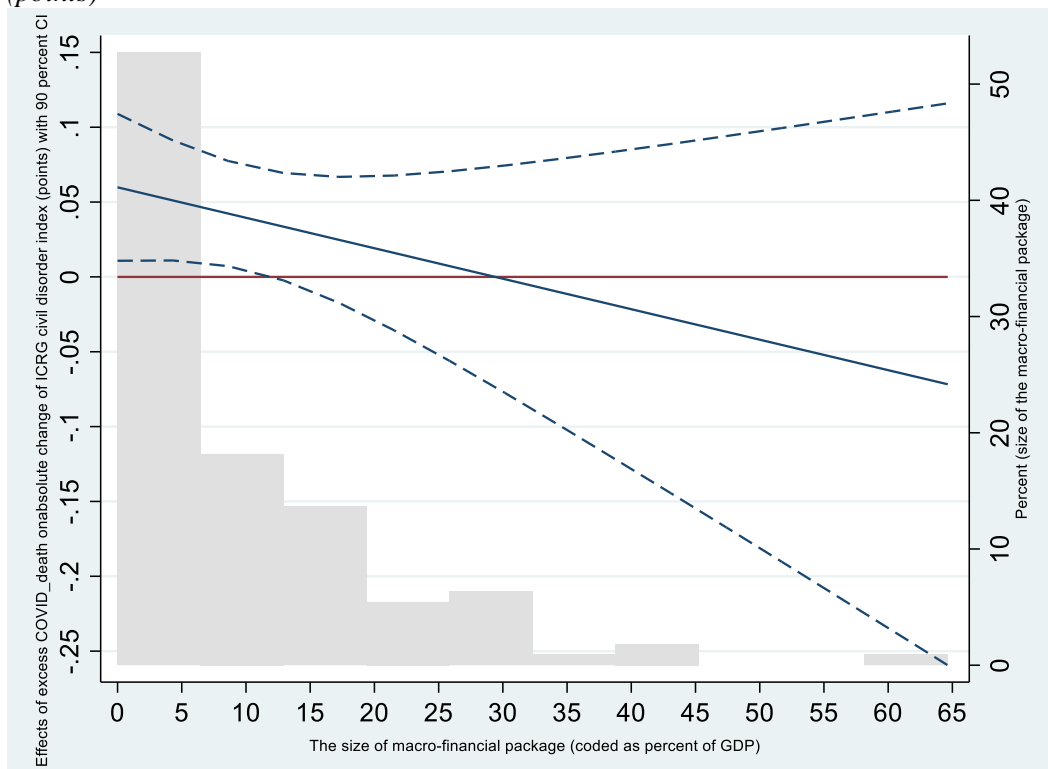
Marginal plot (Model 1, Table 4): Full sample, *Relative growth of ICRG civil disorder index (%)*



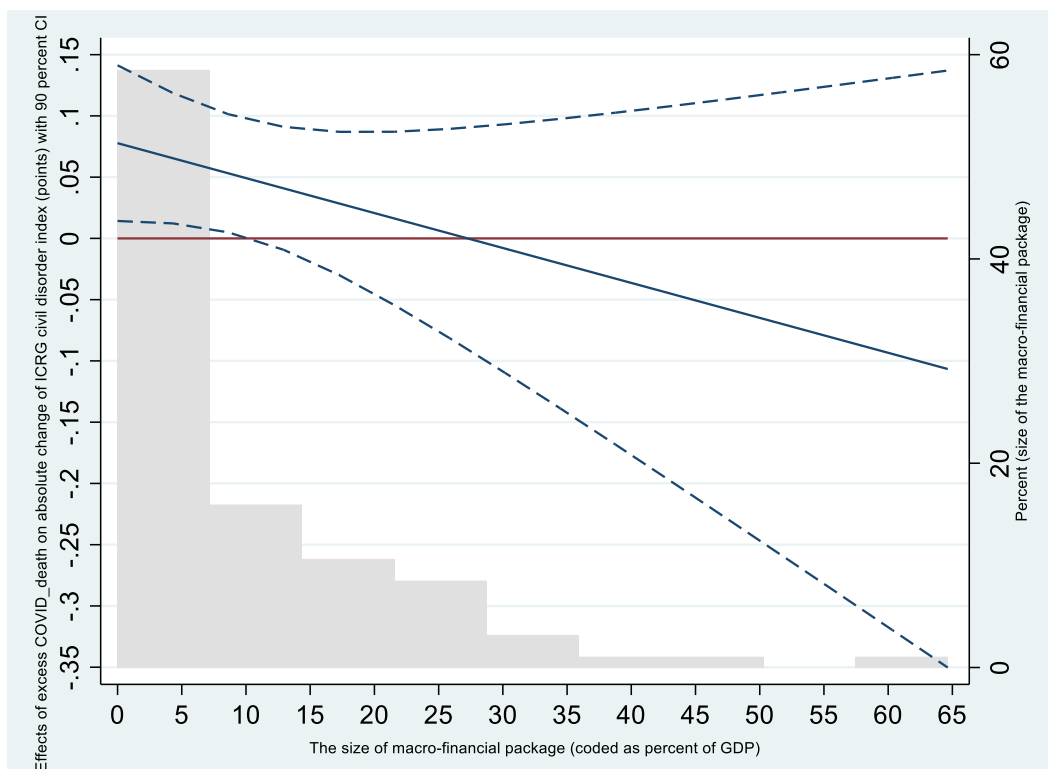
Marginal plot (Model 2, Table 4): Excluding countries with no change in civil disorder, *Relative growth of ICRG civil disorder index (%)*



Marginal plot (Model 3, Table 4): Full sample, *Absolute change of ICRG civil disorder index (points)*



Marginal plot (Model 4, Table 4): Excluding countries with no change in civil disorder, *Absolute change of ICRG civil disorder index (points)*

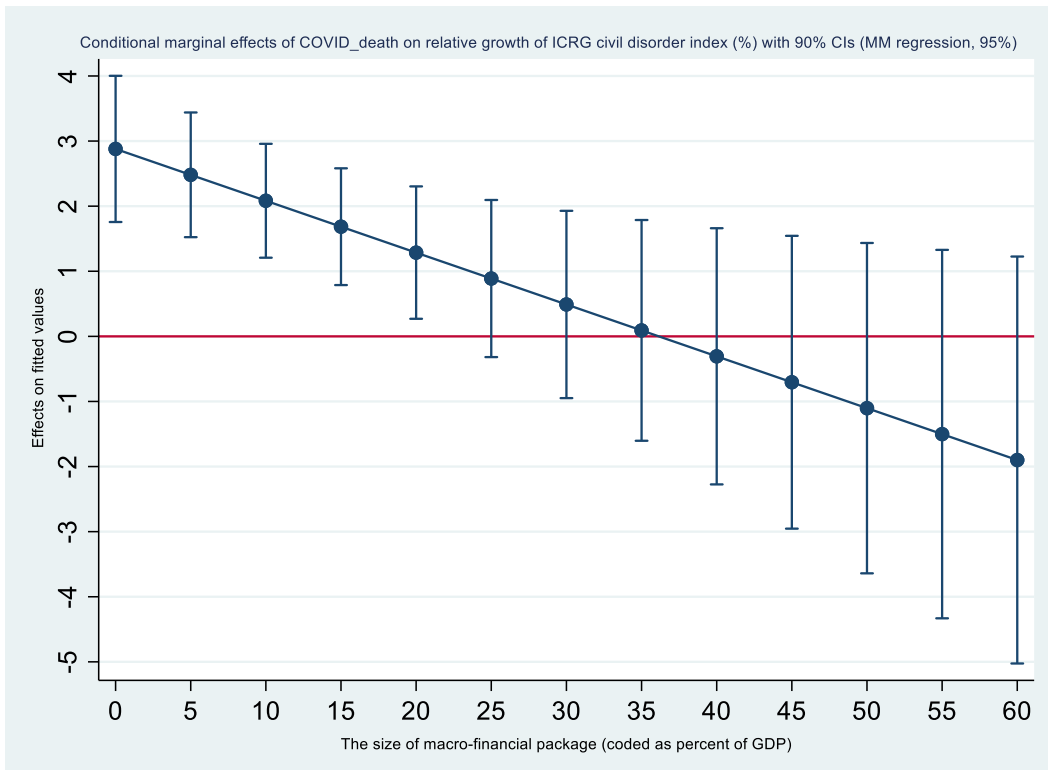


C5. Additional analyses in addressing influential outliers

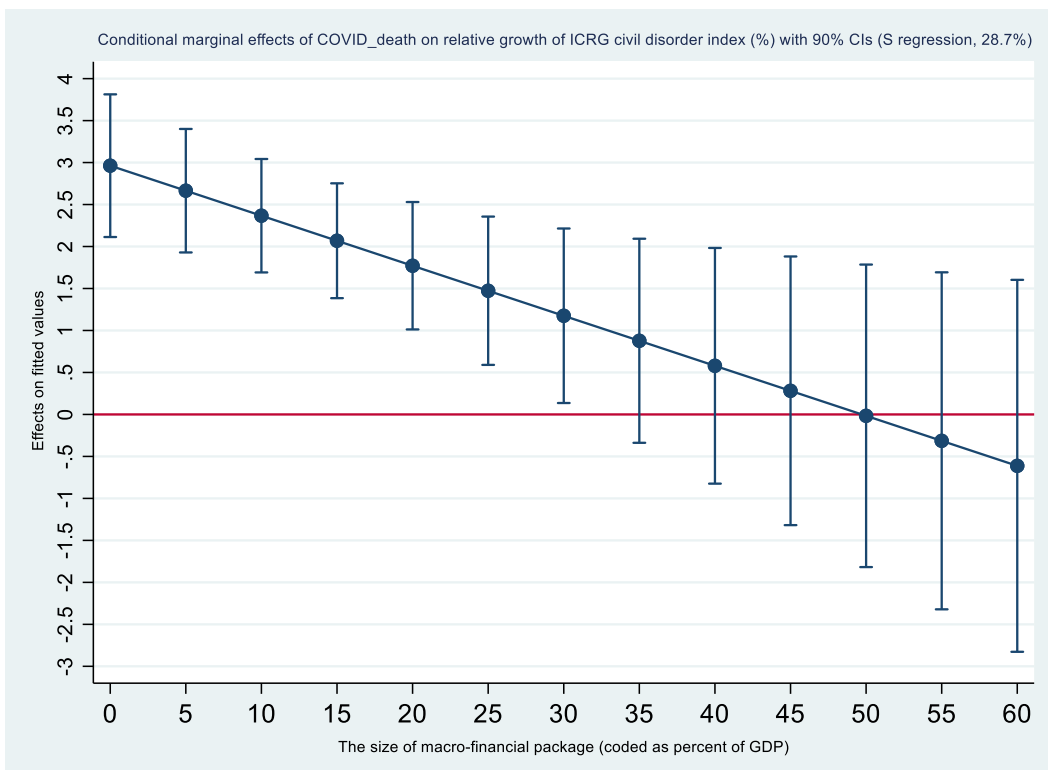
C5a. Marginal plots related to Table 7.

Model 8 of Table 3, OLS and Robust regressions with robust standard errors

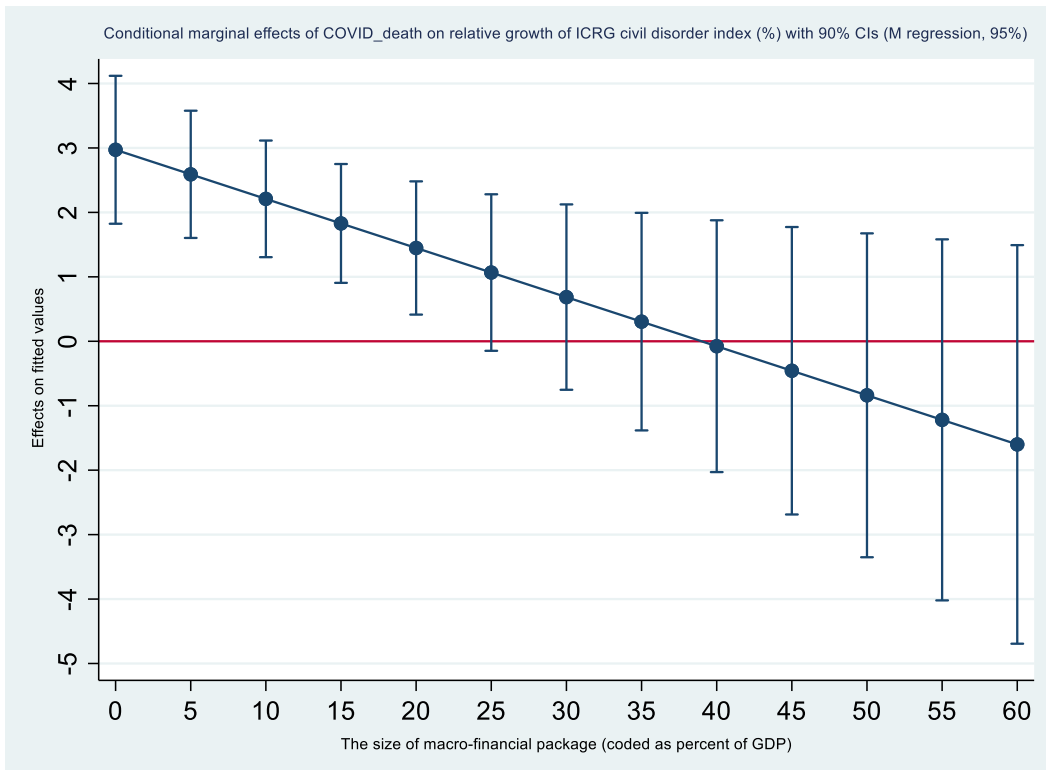
Marginal plot based on MM regression results (95% efficiency).



Marginal plot related to the S regression results (with 28.7% efficiency of OLS)



Marginal plot related to M regression (95% efficiency) results

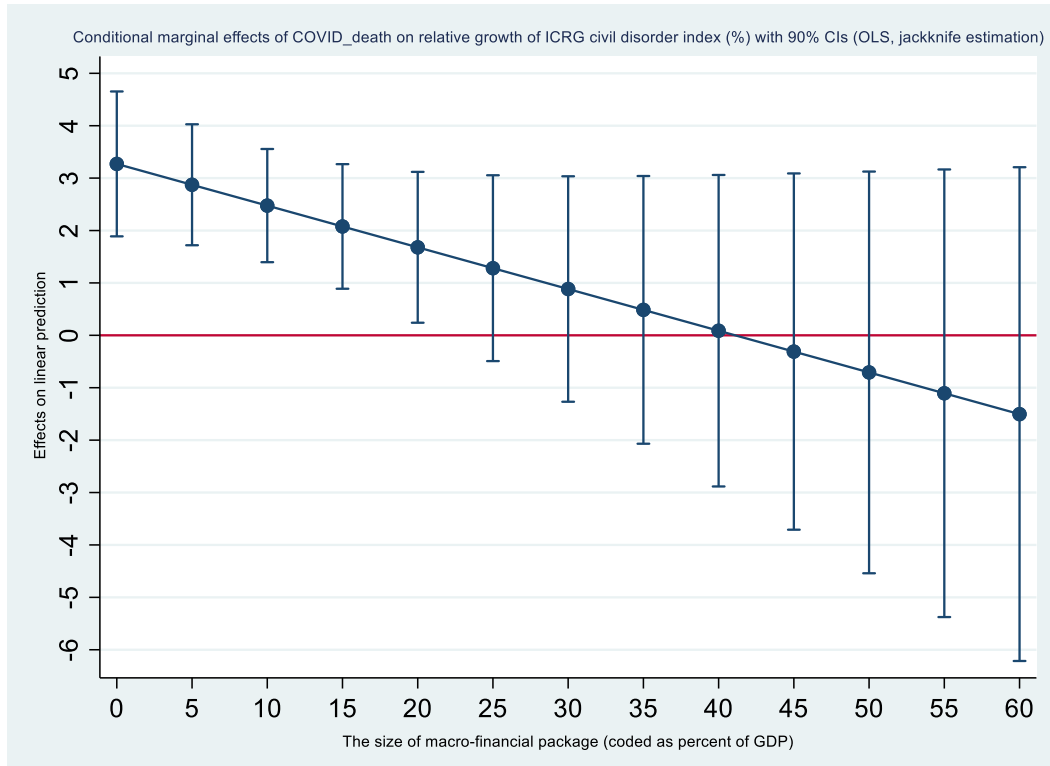


C5b. Marginal plots related to Table 8.

*Model 8 of Table 3, OLS and Robust regressions with
Jackknife Standard Errors*

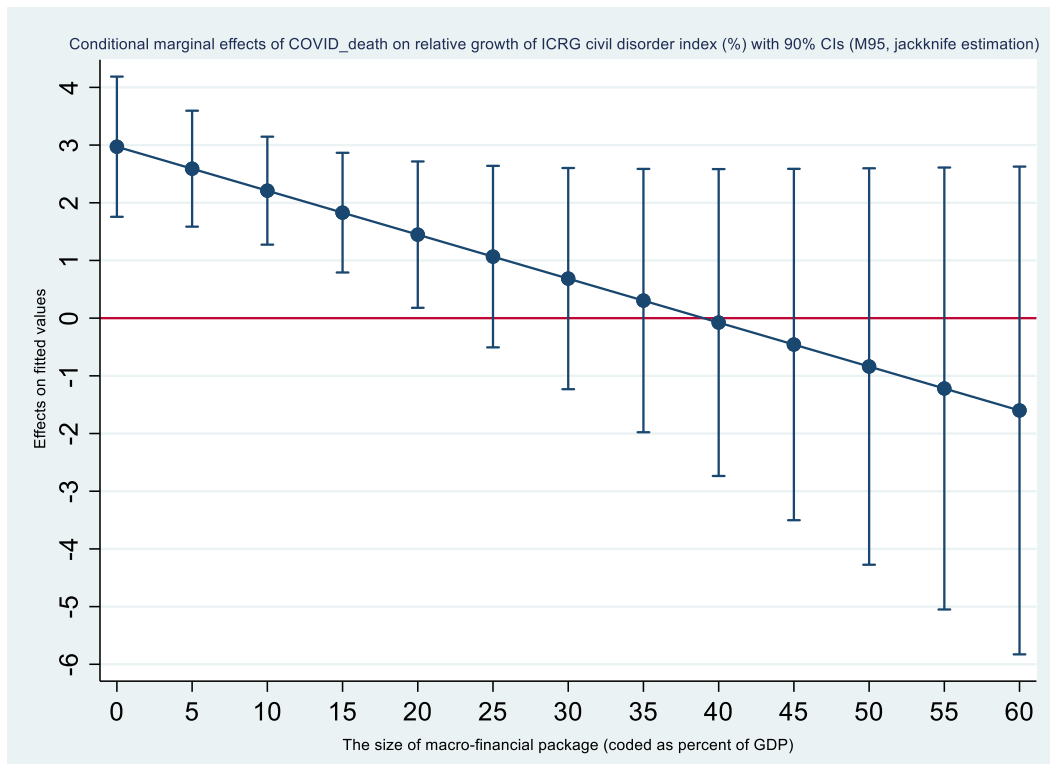
Marginal plot, Model 1 in Table 8

Conditional marginal effects of *COVID_death* on relative growth of ICRG civil disorder index (%) with 90% CIs (OLS, Jackknife estimation)



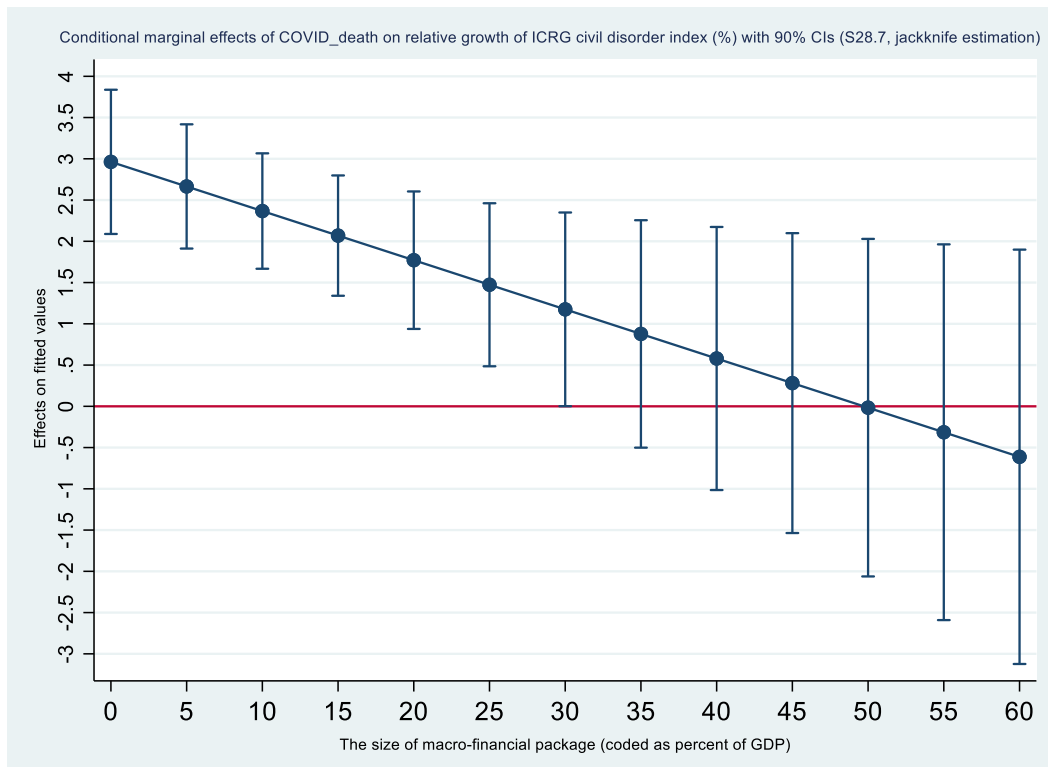
Marginal plots, Model 2 in Table 8

Conditional marginal effects of *COVID_death* on relative growth of ICRG civil disorder index (%) with 90% CIs (M regression 95, Jackknife estimation)



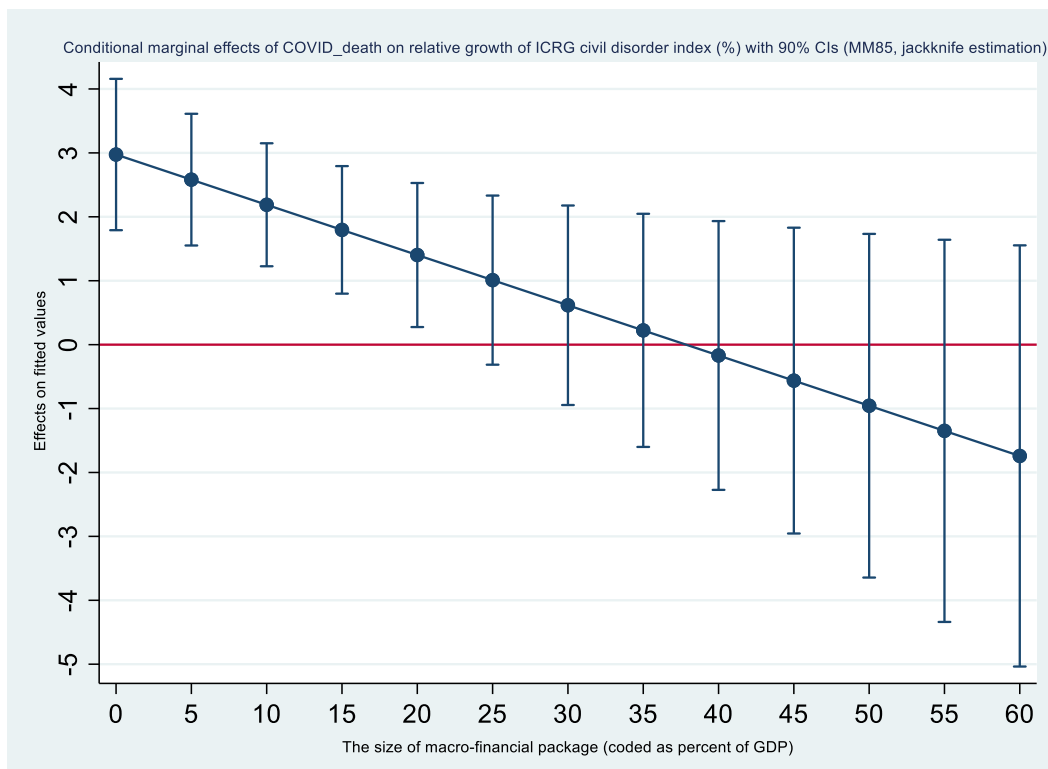
Marginal plot, Model 3 in Table 8

Conditional marginal effects of *COVID_death* on relative growth of ICRG civil disorder index (%) with 90% CIs (S regression 28.7, Jackknife estimation)



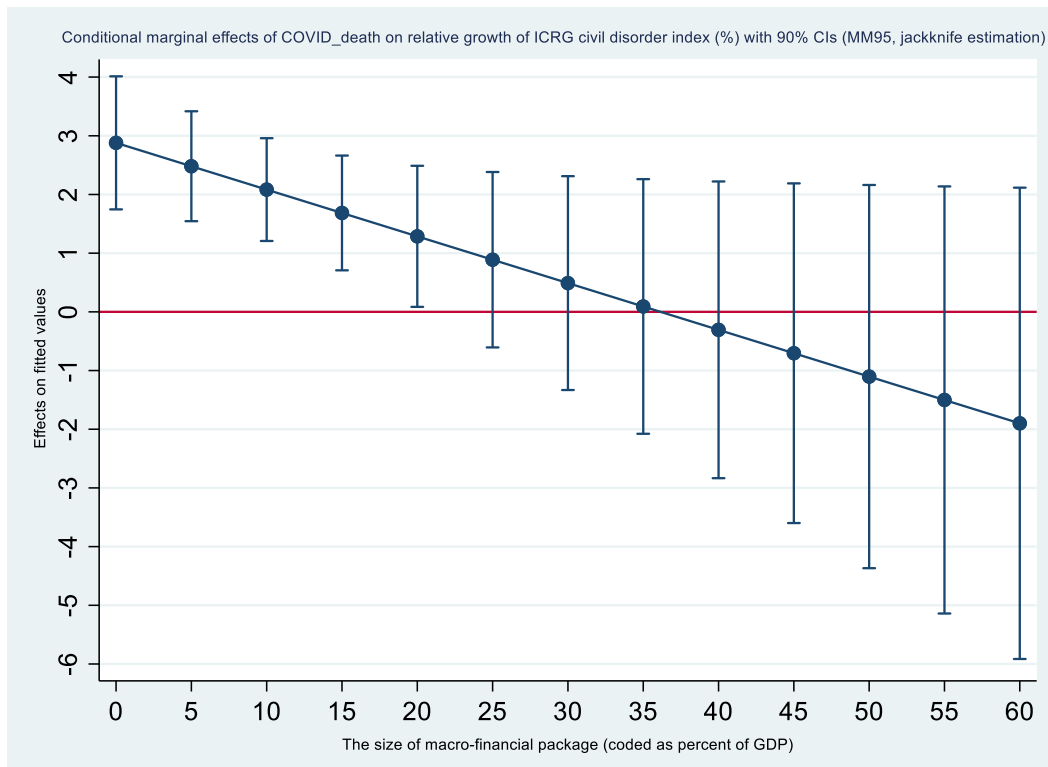
Marginal plot, Model 4 in Table 8

Conditional marginal effects of *COVID_death* on relative growth of ICRG civil disorder index (%) with 90% CIs (MM regression (85% efficiency), Jackknife estimation)



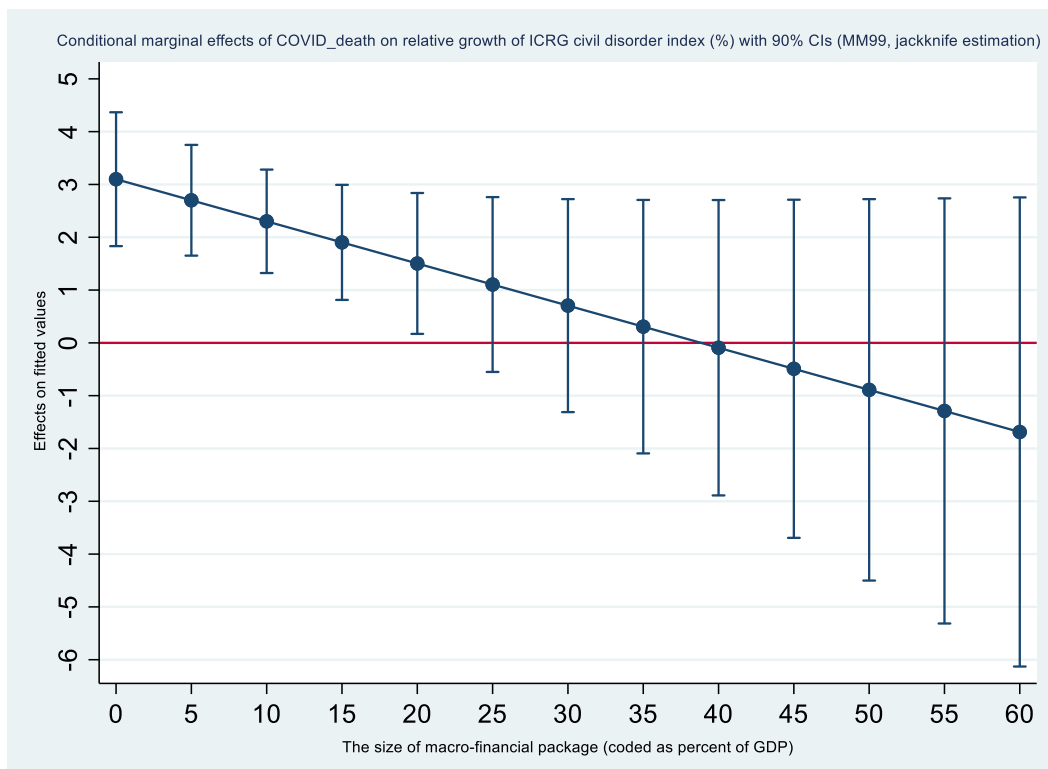
Marginal plot, Model 5 in Table 8

Conditional marginal effects of *COVID_death* on relative growth of ICRG civil disorder index (%) with 90% CIs (MM regression (95% efficiency), Jackknife estimation)



Marginal plot, Model 6 in Table 8

Conditional marginal effects of *COVID_death* on relative growth of ICRG civil disorder index (%) with 90% CIs (MM regression (99% efficiency), Jackknife estimation)

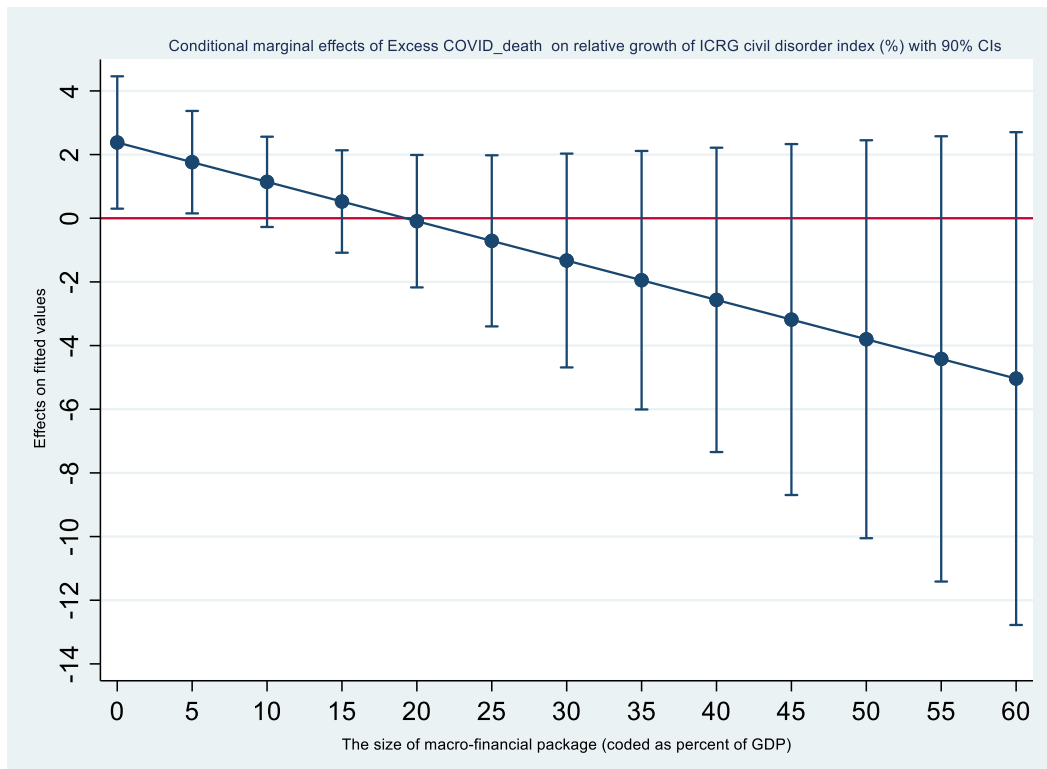


C5c. Marginal plots related to Table 9.

Model 1 of Table 4, OLS and Robust regressions with robust standard errors

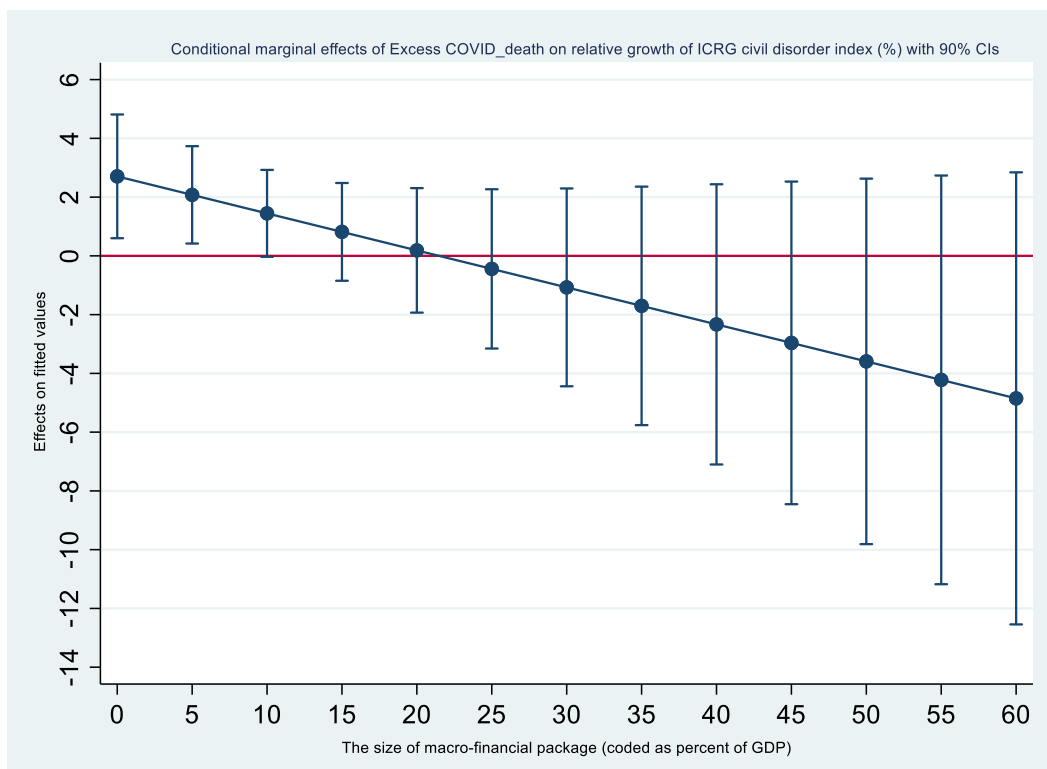
Marginal plots, Model 5 in Table 9

Conditional marginal effects of Excess *COVID_death* on relative growth of ICRG civil disorder index (%) with 90% CIs



Marginal plots, Model 6 in Table 9

Conditional marginal effects of Excess *COVID_death* on relative growth of ICRG civil disorder index (%) with 90% CIs

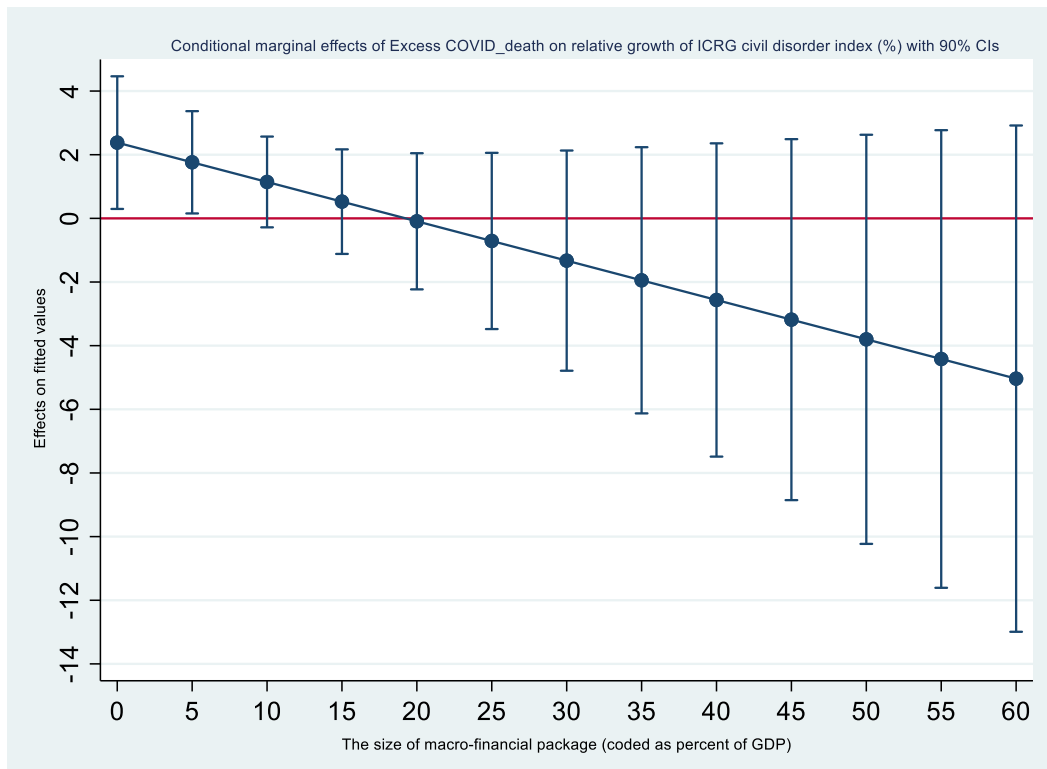


C5d. Marginal plots related to Table 10.

*Model 1 of Table 4, OLS and Robust regressions with
Jackknife Standard Errors*

Marginal plots, Model 5 in Table 10 with Jackknife Standard Errors

Conditional marginal effects of Excess *COVID_death* on relative growth of ICRG civil disorder index (%) with 90% CIs



Marginal plots, Model 6 in Table 10 with Jackknife Standard Errors

Conditional marginal effects of Excess *COVID_death* on relative growth of ICRG civil disorder index (%) with 90% CIs

