

S5: Qualitative results

Javier Pérez de Frutos^{1*}, André Pedersen^{1,2,3}, Egidijus Pelanis⁴, David Bouget¹, Shanmugapriya Survarachakan⁵, Thomas Langø^{1,6}, Ole-Jakob Elle⁴, and Frank Lindseth⁵

¹Department of Health Research, SINTEF, Trondheim, Norway

²Department of Clinical and Molecular Medicine, Norwegian University of Science and University (NTNU), Trondheim, Norway

³Clinic of Surgery, St. Olavs hospital, Trondheim University Hospital, Trondheim, Norway

⁴Intervention Centre, Oslo University Hospital, Oslo, Norway

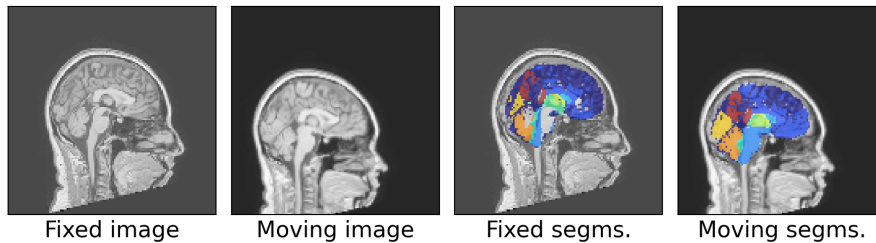
⁵Department of Computer Science, Norwegian University of Science and University (NTNU), Trondheim, Norway

⁶Research Department, Future Operating Room, St. Olavs hospital, Trondheim University Hospital, Trondheim, Norway

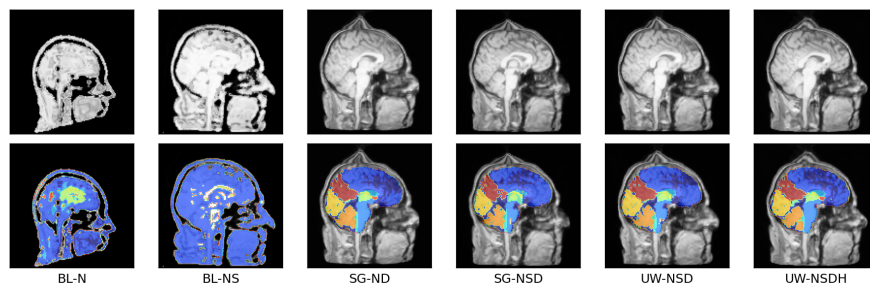
*Corresponding author: Javier Pérez de Frutos, javier.perezdefrutos@sintef.no

Document description

This document contains examples of predictions on the IXI and Oslo-CoMet test datasets.

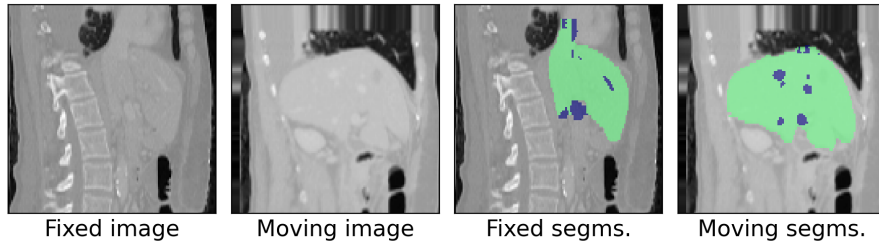


(a) Sample test image.

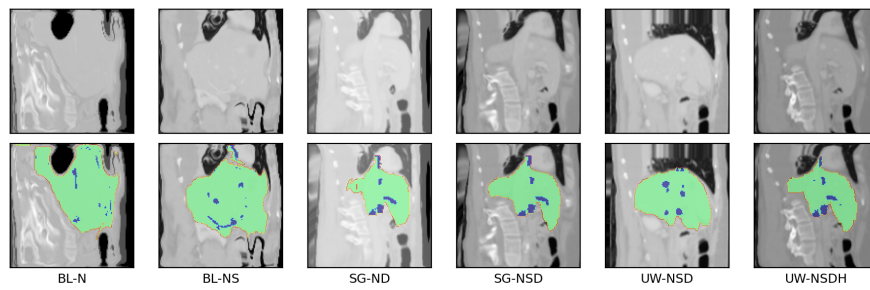


(b) Predictions of the evaluated models on the sample image.

Figure A. Sample image of the IXI test set, and predictions of the models.

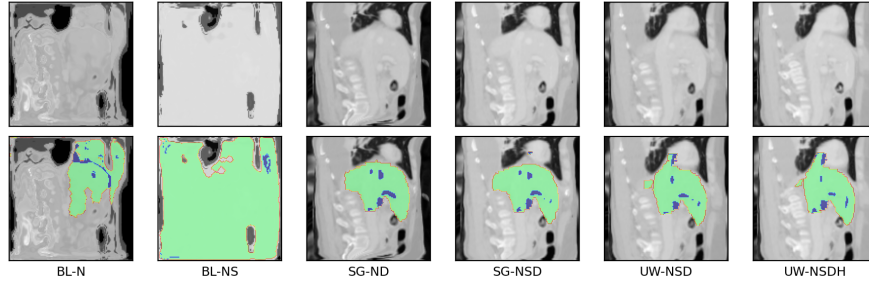


(a) Sample test image.

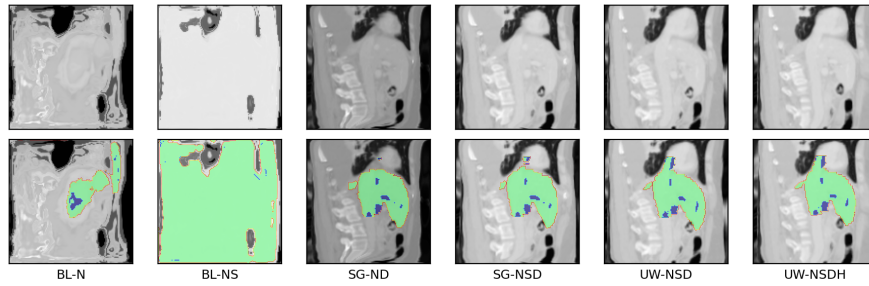


(b) Predictions of the models trained on the Oslo-CoMet dataset.

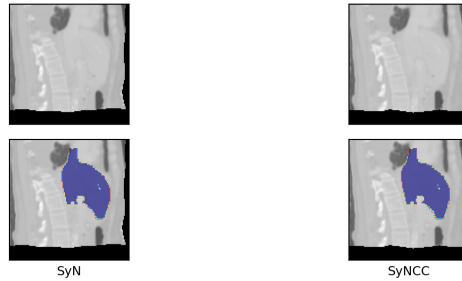
Figure B. Sample image of the Oslo-CoMet test set, and predictions of the models trained on the Oslo-CoMet dataset.



(a) Predictions of the models trained on the Oslo-CoMet dataset from finetuning the entire architecture.



(b) Predictions of the models trained on the Oslo-CoMet dataset from finetuning in two steps.



(c) Predictions of the SyN and SyNCC algorithms.

Figure C. Predictions of the finetuned models and ANTs on the Oslo-CoMet test set sample.