

## Supplementary Online Content

Yuan P, Kang Y, Ma F, et al. Effect of epirubicin plus paclitaxel vs epirubicin and cyclophosphamide followed by paclitaxel on disease-free survival among patients with operable *ERBB2*-negative and lymph node–positive breast cancer: a randomized clinical trial. *JAMA Netw Open*. 2023;6(2):e230122. doi:10.1001/jamanetworkopen.2023.0122

**eFigure 1.** Kaplan-Meier Curves of Distant Disease-Free Survival (DDFS) in All Patients (A), Patients With Luminal A Cancer (B), and Patients With Luminal B Cancer (C)

**eFigure 2.** Kaplan-Meier Curves of Disease-Free Survival Including Second Nonbreast Invasive Cancer (DFS-s) in All Patients (A), Patients With Luminal A Cancer (B), and Patients With Luminal B Cancer (C)

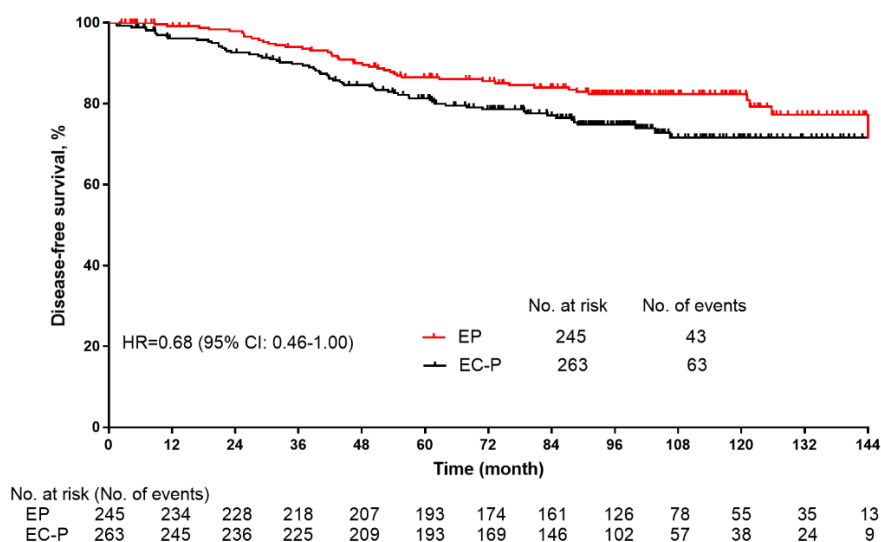
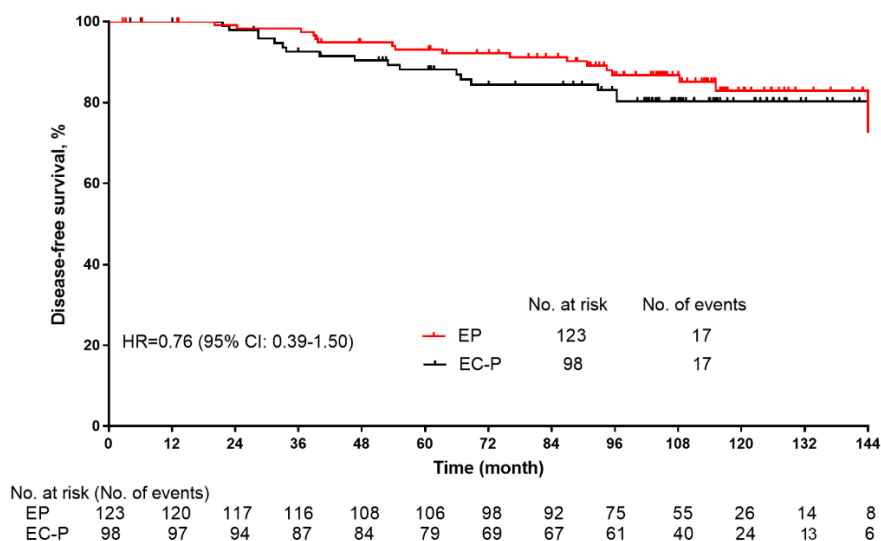
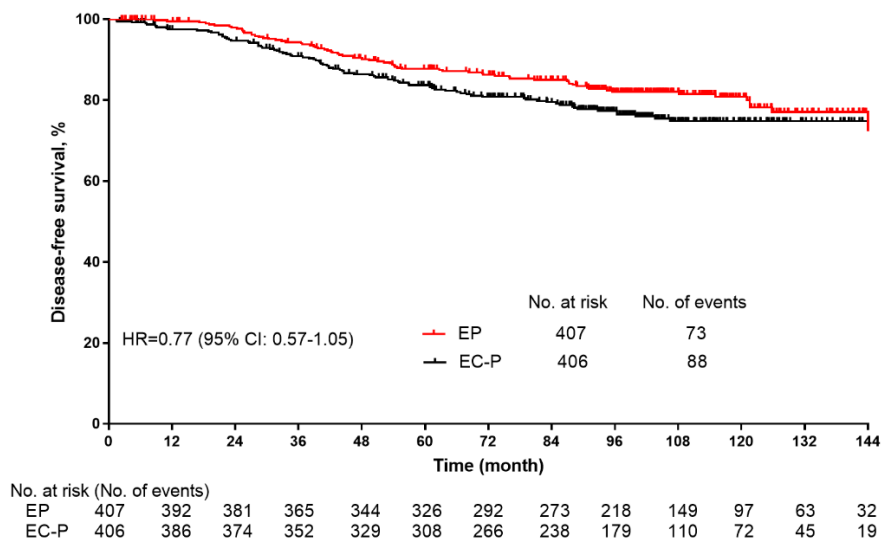
**eTable 1.** The Comparison of Disease-Free Survival Between the 2 Groups

**eTable 2.** Subgroup Analysis

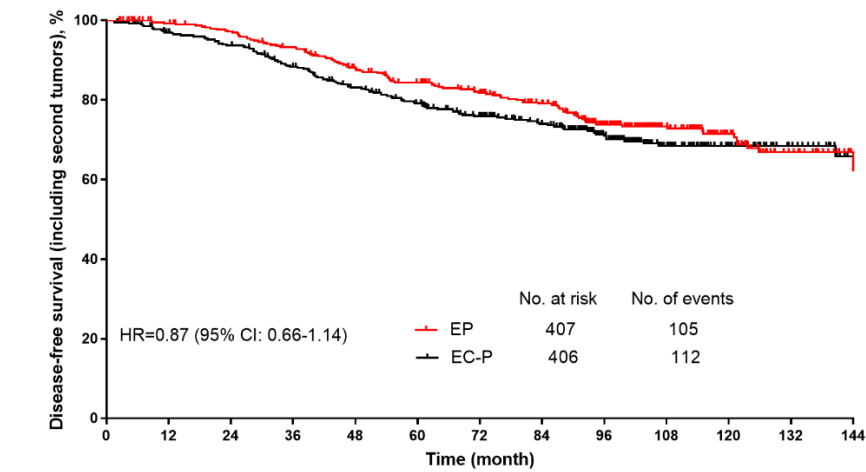
**eTable 3.** The Comparison of Chemical Menopause Events Between the 2 Groups

This supplementary material has been provided by the authors to give readers additional information about their work.

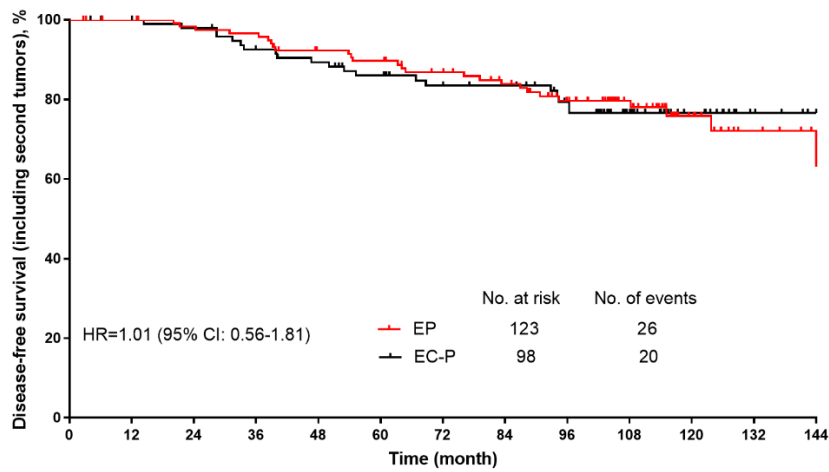
**eFigure 1.** Kaplan-Meier Curves of Distant Disease-Free Survival (DDFS) in All Patients (A), Patients With Luminal A Cancer (B), and Patients With Luminal B Cancer (C)



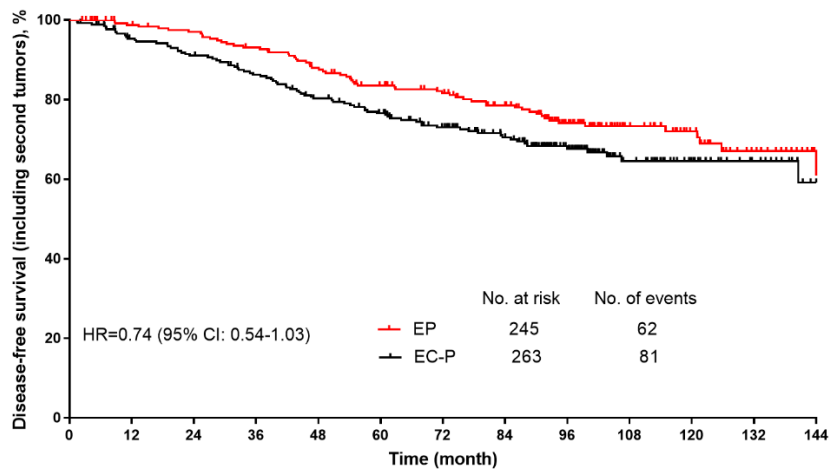
**eFigure 2.** Kaplan-Meier Curves of Disease-Free Survival Including Second Nonbreast Invasive Cancer (DFS-s) in All Patients (A), Patients With Luminal A Cancer (B), and Patients With Luminal B Cancer (C)



No. at risk (No. of events)	0	12	24	36	48	60	72	84	96	108	120	132	144
EP	407	391	379	362	336	316	278	254	198	132	87	56	28
EC-P	406	384	370	343	318	295	253	222	167	105	68	42	18



No. at risk (No. of events)	0	12	24	36	48	60	72	84	96	108	120	132	144
EP	123	140	136	129	118	115	101	94	78	58	31	19	13
EC-P	98	123	120	110	103	95	79	75	65	45	28	17	8



No. at risk (No. of events)	0	12	24	36	48	60	72	84	96	108	120	132	144
EP	245	233	227	217	203	188	166	151	113	67	49	30	11
EC-P	263	243	232	217	200	186	160	135	94	55	37	24	9

**eTable 1.** The Comparison of Disease-Free Survival Between the 2 Groups

	EP (n=407)	EC-P (n=406)
Patients with an event	89 (21.9)	100 (24.6)
Breast cancer relapse	82 (20.1)	95 (23.4)
Local recurrence	8 (2.0)	10 (2.5)
Regional recurrence	17 (4.2)	29 (7.1)
Distant recurrence	64 (15.7)	74 (18.2)
Bone	34 (8.4)	47 (11.6)
Lung	22 (5.4)	27 (6.7)
Liver	20 (4.9)	26 (6.4)
Brain	2 (0.5)	2 (0.5)
Other	6 (1.5)	5 (1.2)
Death	7 (1.7)	5 (1.2)

**eTable 2.** Subgroup Analysis

	DFS						OS					
	EP		EC-P		HR (95% CI)	P value	EP		EC-P		HR (95% CI)	P value
	No.	Events	No.	Events			No.	Events	No.	Events		
Age												
<55 years	287	65	294	68	0.93 (0.66-1.30)	0.652	287	24	294	28	1.15 (0.66-1.96)	0.629
≥55 years	120	24	112	32	0.60 (0.35-1.02)	0.059	120	11	112	14	0.62 (0.28-1.37)	0.235
Menopausal status												
Premenopausal	243	56	241	50	1.05 (0.72-1.54)	0.775	243	24	241	17	1.32 (0.71-2.44)	0.373
Postmenopausal	164	33	165	50	0.59 (0.38-0.91)	0.017	164	15	165	21	0.66 (0.34-1.27)	0.214
TNM stage												
Stage2	217	31	213	30	0.93 (0.56-1.54)	0.774	217	10	213	7	1.27 (0.49-3.33)	0.622
Stage3	190	58	193	70	0.78 (0.55-1.10)	0.155	190	29	193	31	0.91 (0.55-1.52)	0.719
Ki67												
≤30%	303	57	284	67	0.72 (0.51-1.03)	0.076	303	24	284	23	0.90 (0.51-1.59)	0.715
>30%	65	15	77	23	0.76 (0.40-1.45)	0.408	65	7	77	12	0.72 (0.29-1.79)	0.490
Lymphovascular invasion												
Yes	117	32	126	33	1.03 (0.63-1.67)	0.902	117	17	126	16	1.14 (0.57-2.22)	0.725
No	290	57	280	67	0.74 (0.52-1.05)	0.099	290	22	280	22	0.89 (0.49-1.61)	0.700
Endocrinotherapy												
Yes	394	86	393	97	0.82 (0.61-1.09)	0.172	394	38	393	37	0.95 (0.61-1.49)	0.835
No	13	3	13	3	1.10 (0.22-5.56)	0.908	13	1	13	1	1.09 (0.07-16.67)	0.953
Radiotherapy												
Yes	257	68	258	65	0.98 (0.69-1.37)	0.894	257	30	258	26	1.06 (0.63-1.82)	0.808
No	150	21	148	35	0.55 (0.32-0.93)	0.024	150	9	148	12	0.72 (0.31-1.69)	0.462

DFS, disease-free survival; OS, overall survival; HR, hazard ratio; CI, confidence interval.

**eTable 3.** The Comparison of Chemical Menopause Events Between the 2 Groups

	EP (n=135) <sup>a</sup>	EC-P (n=114) <sup>a</sup>
CIA	61 (45.2)	59 (51.8)

<sup>a</sup> Those who were postmenopausal, or with irregular menstruation, or received ovarian function inhibitors were excluded from the analysis. CIA, chemotherapy-induced amenorrhea, which was defined as amenorrhea for more than 12 months during the chemotherapy or within 1 year after the chemotherapy.