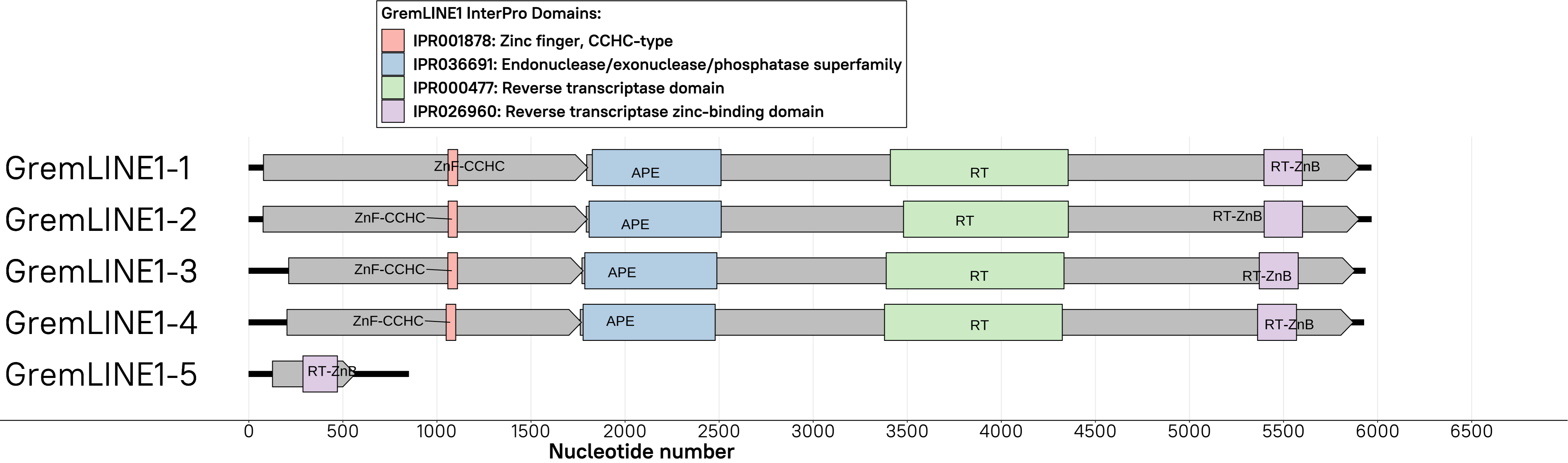
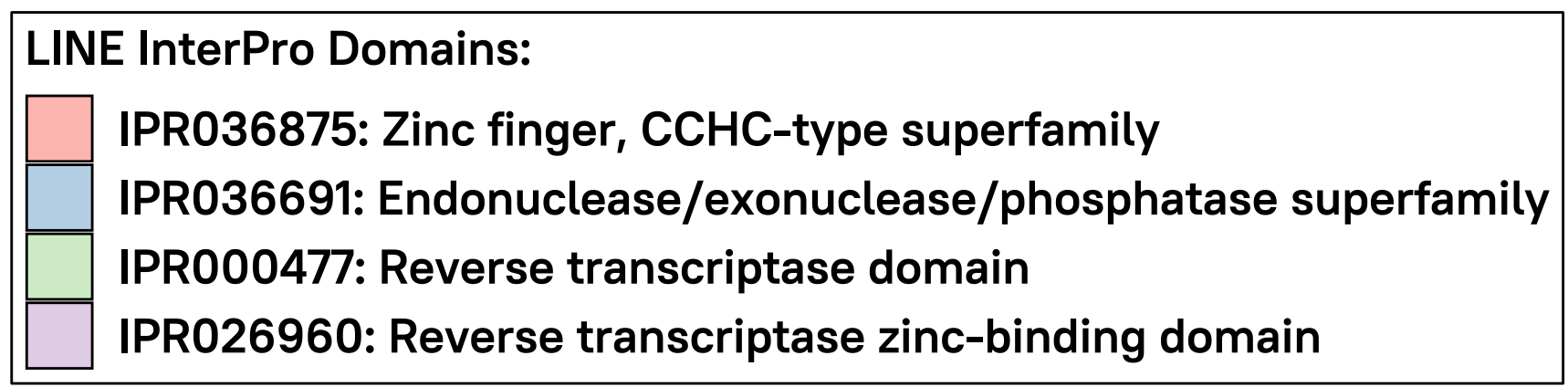
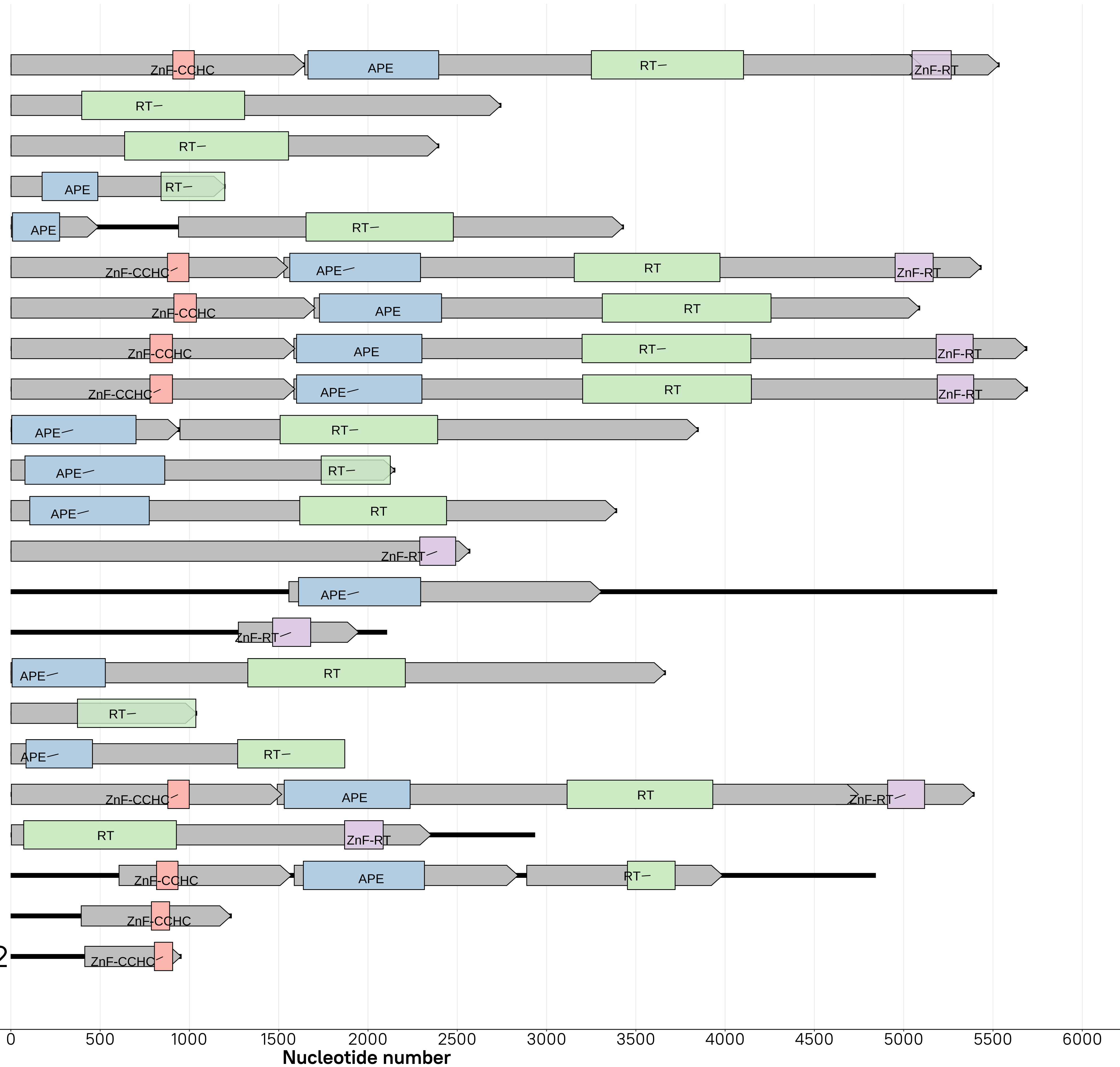


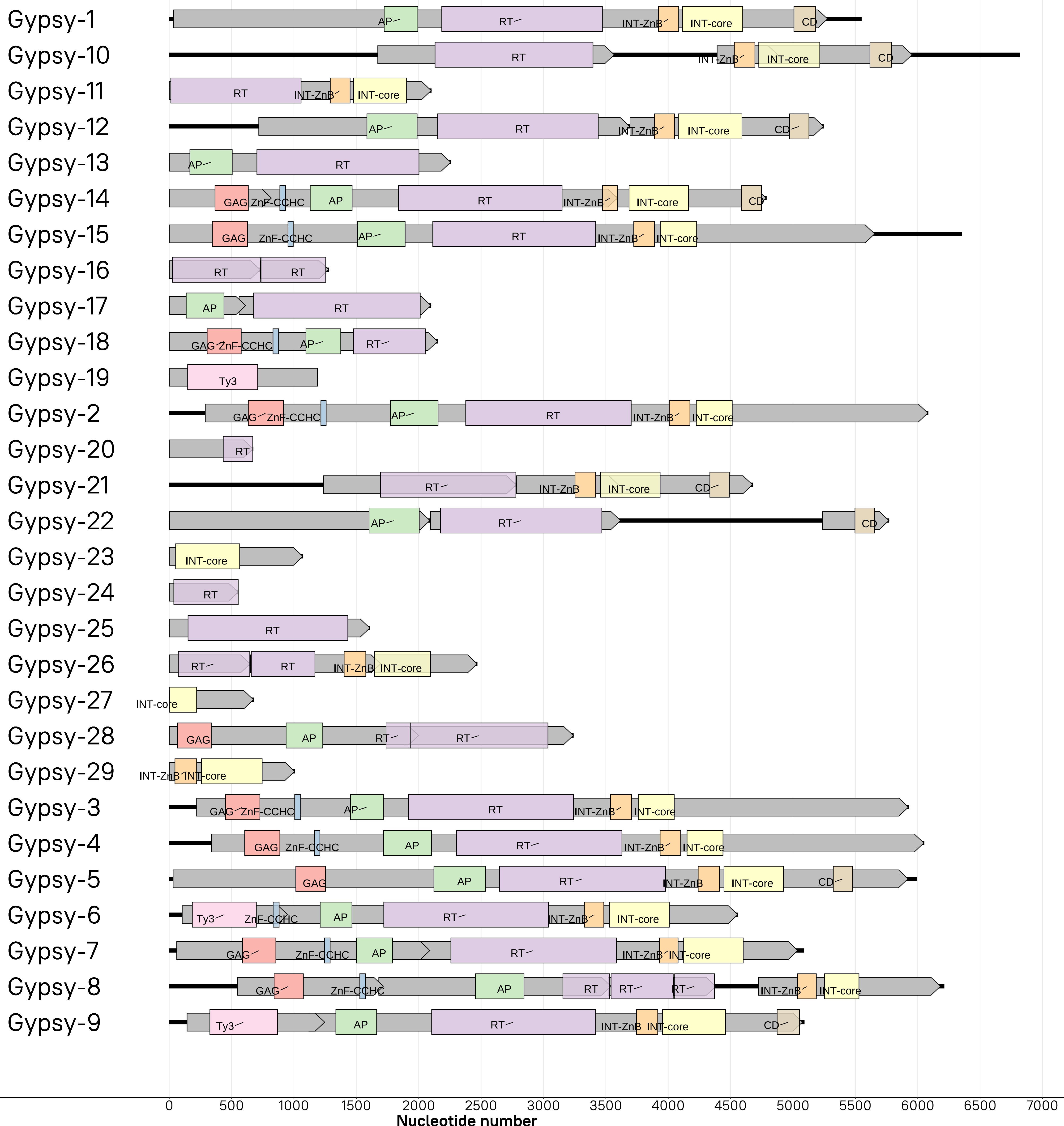
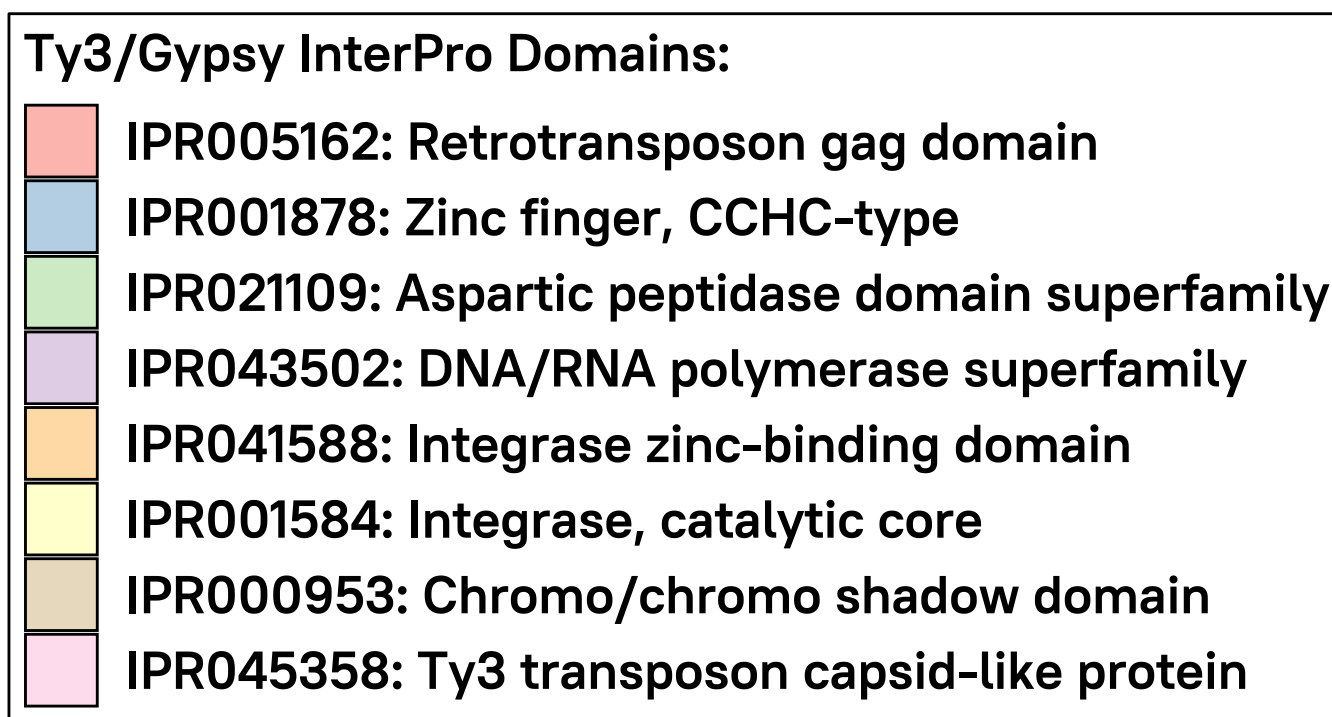
Dataset S3. Major transposable element families and subfamilies, their ORFs, and protein domain configurations. The full-length, scaled nucleotide sequences of the major transposable element families and subfamilies identified in *M. lusitanicus* are depicted. Each family shows ORF prediction (gray arrowed blocks), as well as encoded InterPro protein domains (color-coded rectangles).

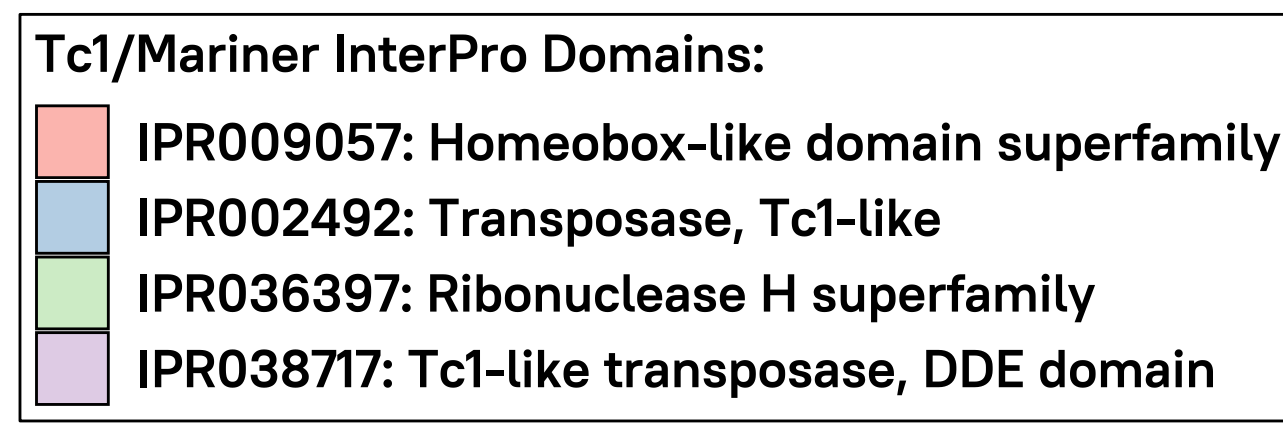




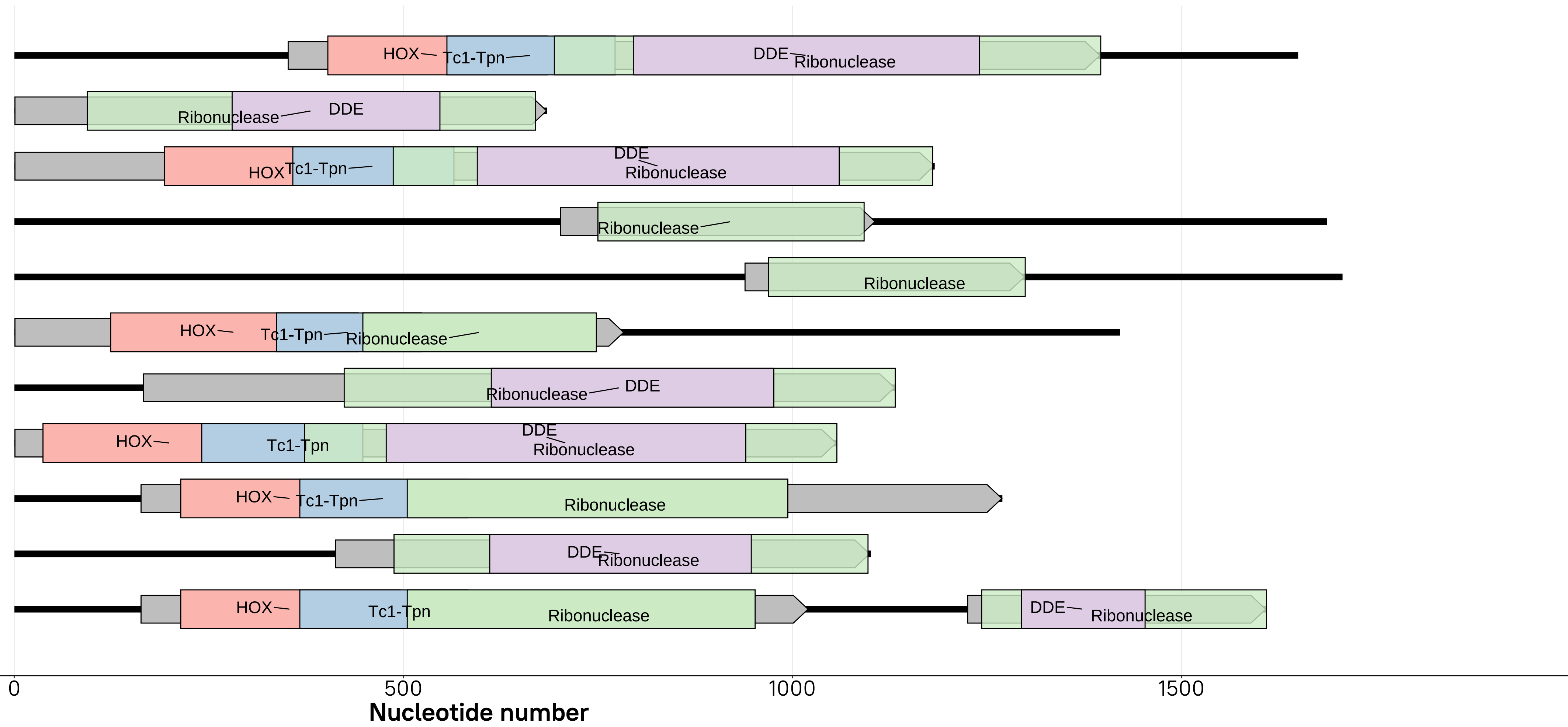
LINE-10
 LINE-11
 LINE-12
 LINE-13
 LINE-14
 LINE-15
 LINE-16
 LINE-17
 LINE-18
 LINE-19
 LINE-20
 LINE-21
 LINE-22
 LINE-3
 LINE-5.2
 LINE-6
 LINE-7
 LINE-8
 LINE-9
 LINE_L1-1
 LINE_L1-3
 LINE_L1-4.1
 LINE_L1-4.2

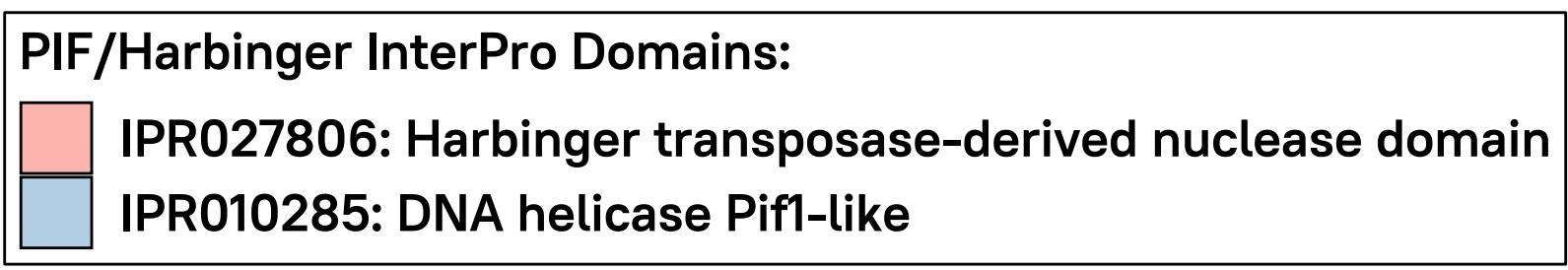




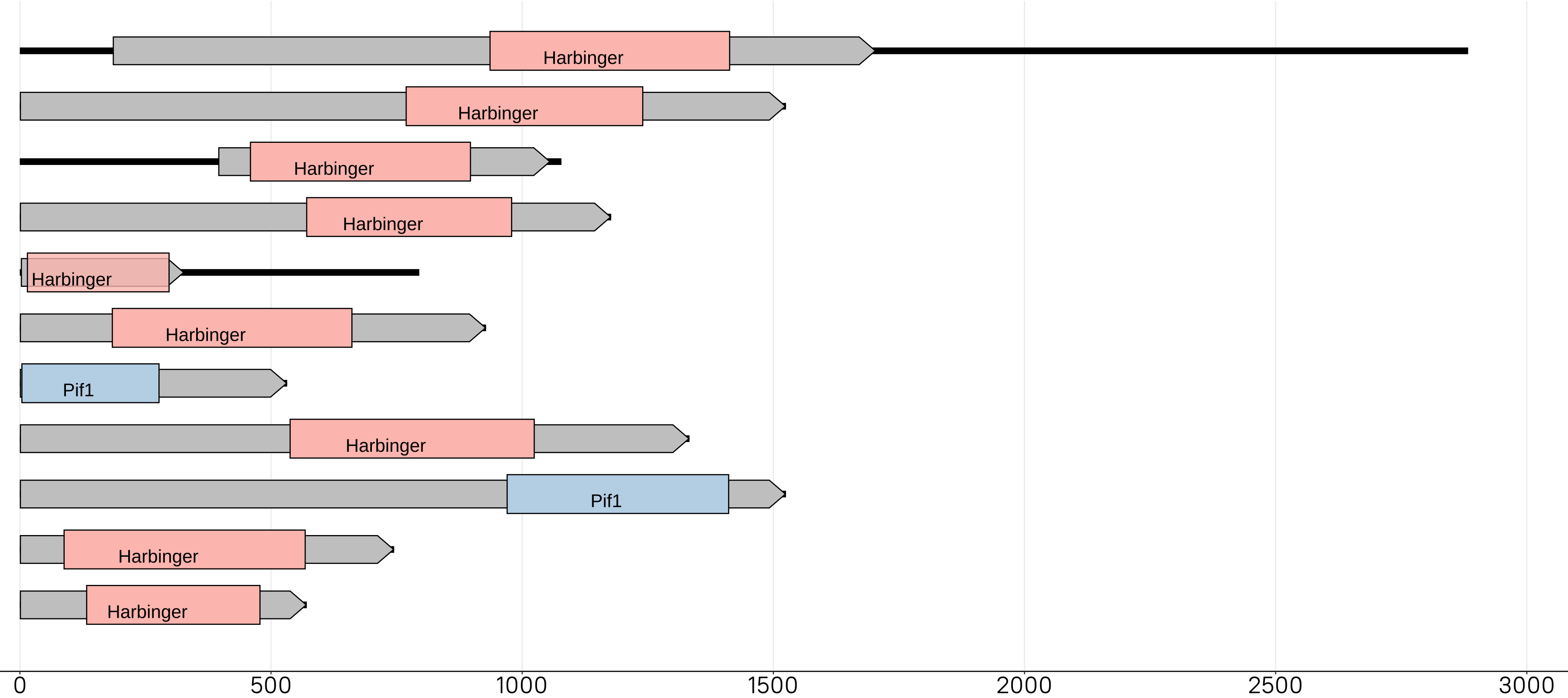


Tc1Mariner-1
 Tc1Mariner-10
 Tc1Mariner-11
 Tc1Mariner-2
 Tc1Mariner-3
 Tc1Mariner-4
 Tc1Mariner-5
 Tc1Mariner-6
 Tc1Mariner-7
 Tc1Mariner-8
 Tc1Mariner-9





PIFharbinger-1
 PIFharbinger-10
 PIFharbinger-11
 PIFharbinger-12
 PIFharbinger-2
 PIFharbinger-3
 PIFharbinger-4
 PIFharbinger-5
 PIFharbinger-6
 PIFharbinger-7
 PIFharbinger-8



Nucleotide number

