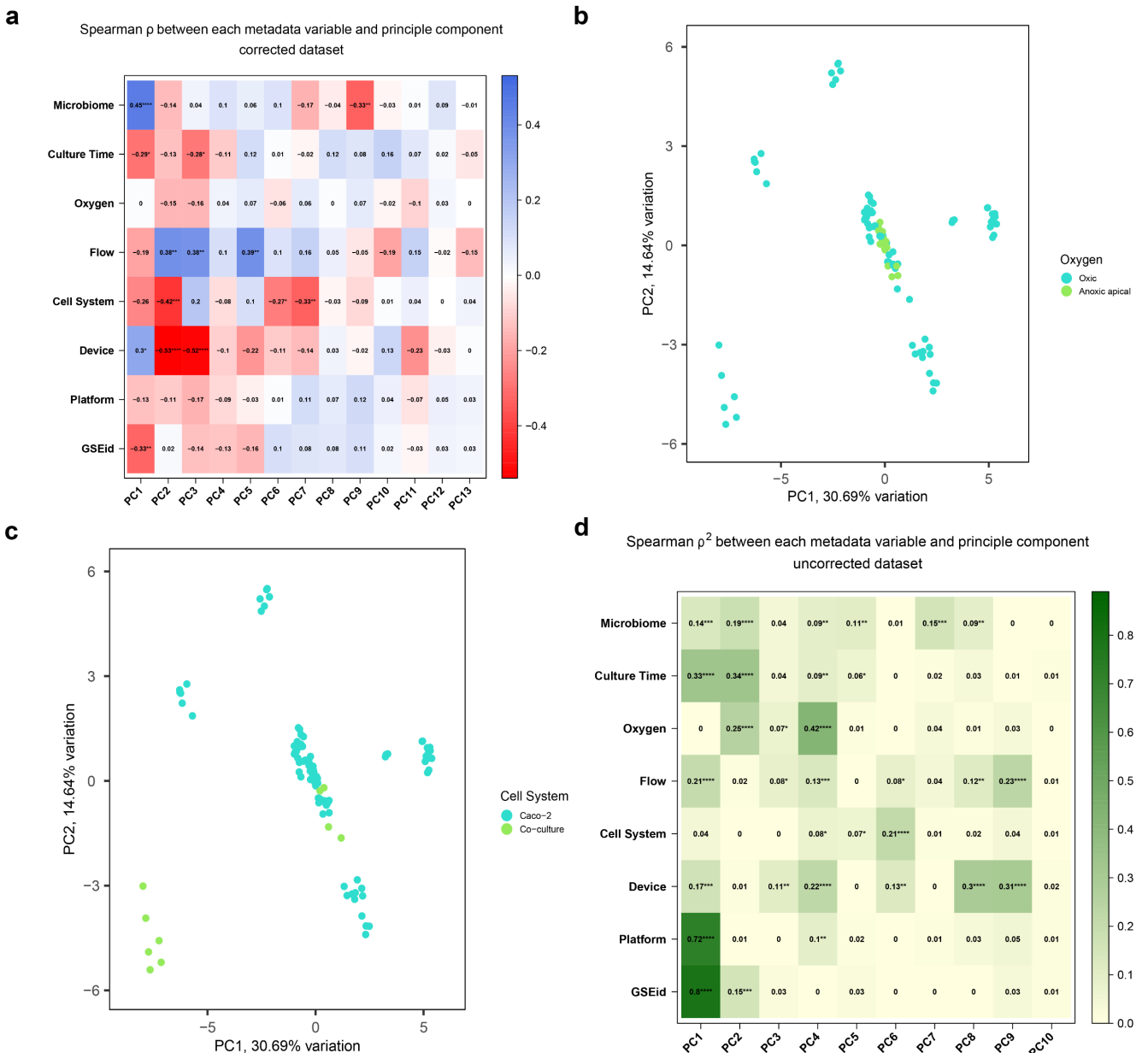


## Online Resource 2

Model	GSE	No. of timepoints	Culture time course				
			t = 0 days	7 days	14 days	21 days	
Insert	GSE7259	2					
	GSE15636	2					
	GSE17625	6					
	GSE21976	2	???				
	GSE30292	1					
	GSE30364	1					
	GSE65790	1		Time not reported			
	GSE81867	1					
	GSE115022	1					
	GSE156269	1					
	GSE158620	1					
	GSE173729	1					
	Chip	GSE65790	1				
		GSE79383	1				
GSE156269		1					
GSE158620		1					

= reported as preconfluent    
 /  = static vs. dynamic    
 /  = oxic vs. anoxic apical compartment    
 = co-culture with (eukaryotic) cells    
 = exposure to microbiota

## Online Resource 3



# Online Resource 4

