

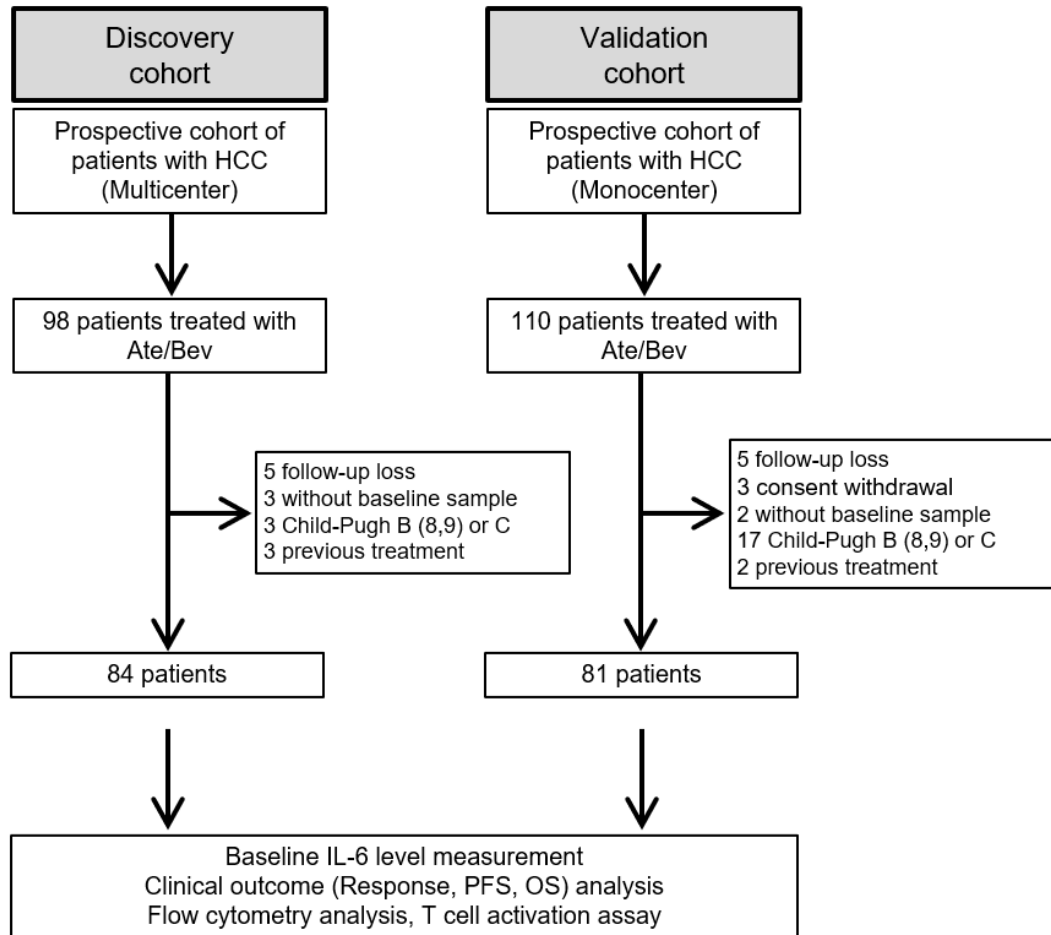
# **High serum IL-6 correlates with reduced clinical benefit of atezolizumab and bevacizumab in unresectable hepatocellular carcinoma**

Hannah Yang, Beodeul Kang, Yeonjung Ha, Sung Hwan Lee,  
Ilhwan Kim, Hyeyeong Kim, Won Suk Lee, Gwangil Kim, Sanghoon Jung, Sun  
Young Rha, Vincent E. Gaillard, Jaekyung Cheon, Chan Kim, Hong Jae Chon

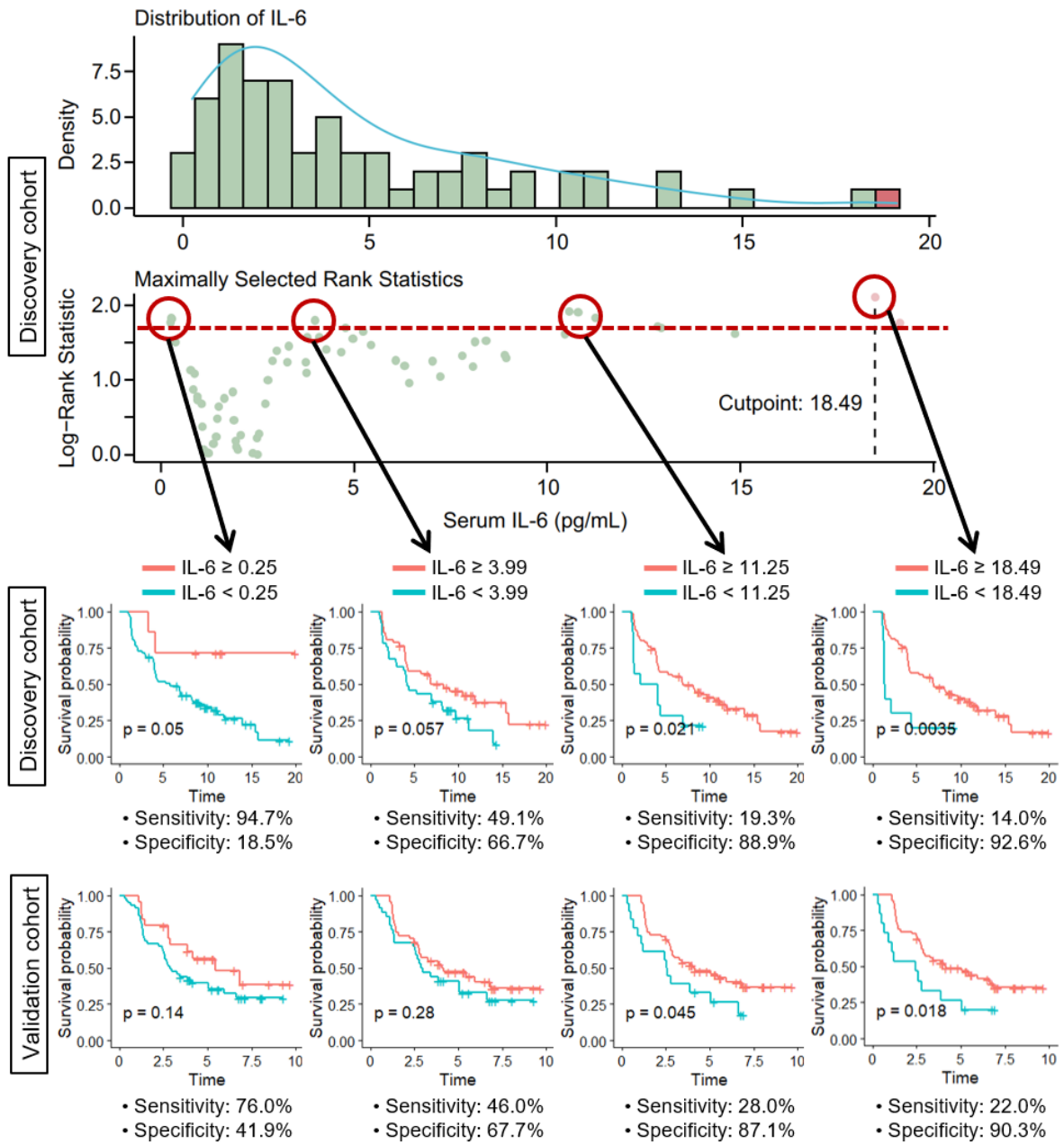
## Table of contents

Fig. S1.....	2
Fig. S2.....	3
Fig. S3.....	4
Fig. S4.....	5
Supplementary materials.....	6

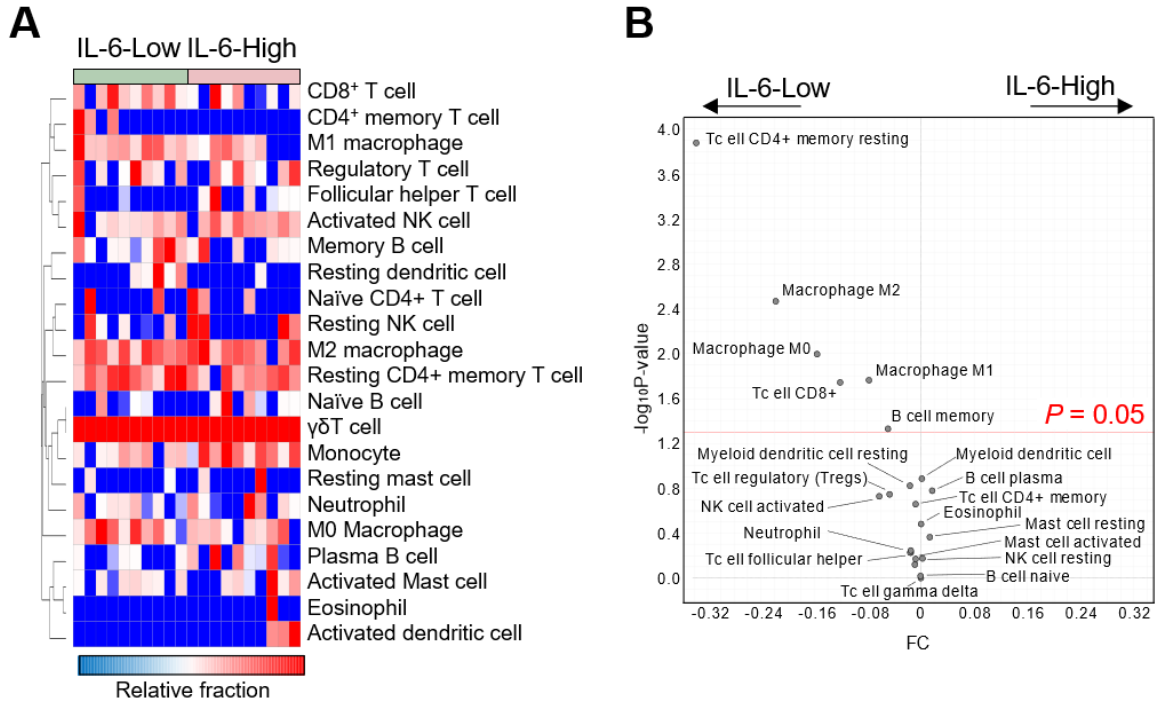
**Fig. S1. CONSORT diagram**



**Fig. S2. Determination of IL-6 cutoff using maximally selected rank statistics**

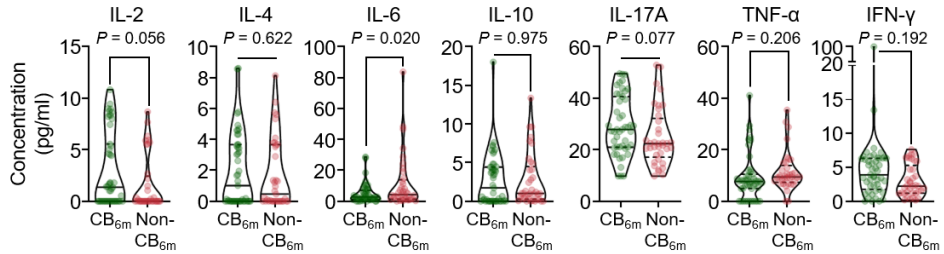


**Fig. S3. Immune cell subsets by CIBERSORT analysis according to serum IL-6 levels**

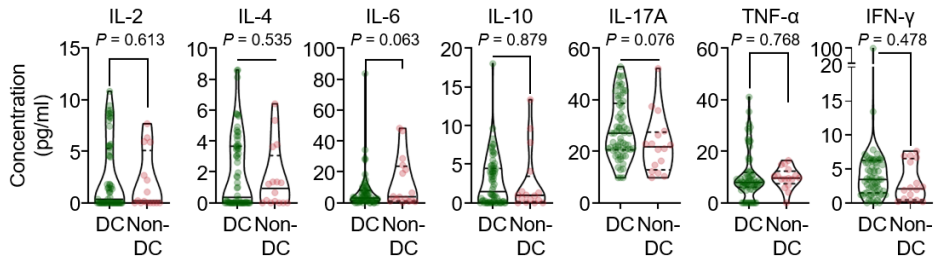


**Fig. S4. Comparison between clinical benefit 6 (CB<sub>6m</sub>) month and disease control rate**

**Clinical benefit 6 month (CB<sub>6m</sub>) = CR + PR + SD with PFS ≥ 6 months**



**Disease control = CR + PR + SD (regardless of PFS duration)**



## Supplementary materials

### List of antibodies

<b>Name</b>	<b>Provider</b>	<b>Cat. #</b>
Fixable Viability Dye eFluor™ 780	eBioscience	65-0865-14
anti-Human CD3 APC (clone: SK7)	eBioscience	17-0036-41
anti-Human CD4 PE-Cy7 (clone: RPA-T4)	BioLegend	300512
anti-Human CD8 eFluor™506 (clone: RPA-T8)	eBioscience	69-0088-41
anti-Human interferon- $\gamma$ PE (clone B27)	BD Biosciences	562016
anti-Human tumor necrosis factor- $\alpha$ V450 (clone Mab11)	BD Biosciences	561311
anti-Human CD8 (clone: SP57)	Ventana	790-4460
anti-Human CD4 (clone: SP35)	Abcam	Ab213215