

Scavenging neurotoxic aldehydes by lysine carbon dots

Daniel Nir Bloch,^{*a} Michele Sandre,^{*b,c} Shani Ben-Zichri,^a Anna Masato,^{c,d} Sofiya Kolusheva,^e Luigi Bubacco^{#c,d} and Raz Jelinek^{#a,e}

Raw gels and blots

Figure 7A

Uncropped SDS-PAGE Comassie Blue stained image of the three replicated experiments. The rectangle with dotted line represents the image presented in the article.

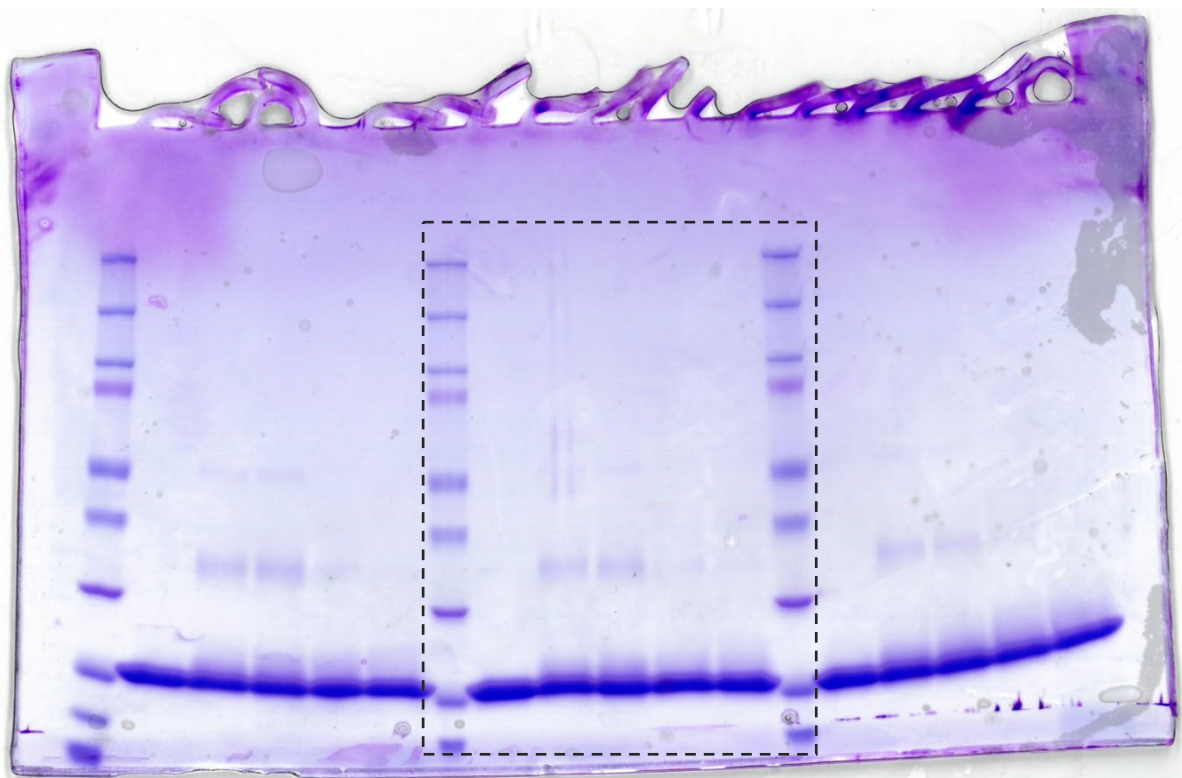


Figure 7B

Uncropped SDS-PAGE 800nm NiRF acquisition of the three replicated experiments. The rectangle with dotted line represents the image presented in the article.

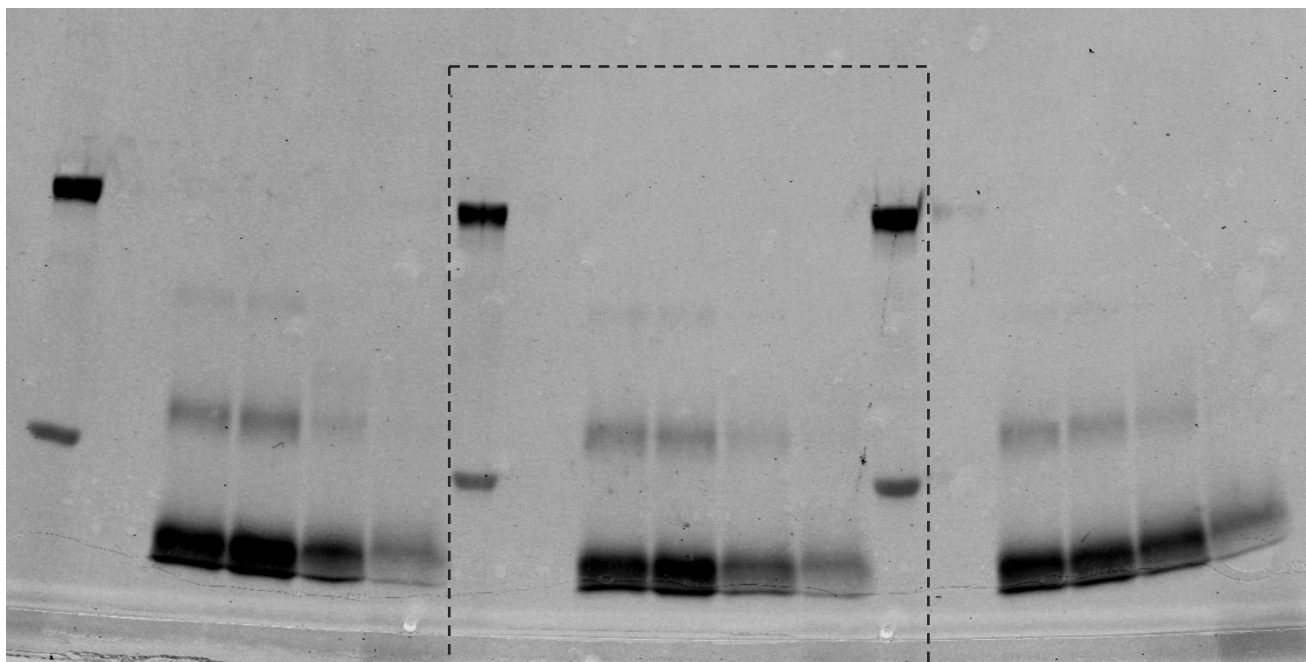
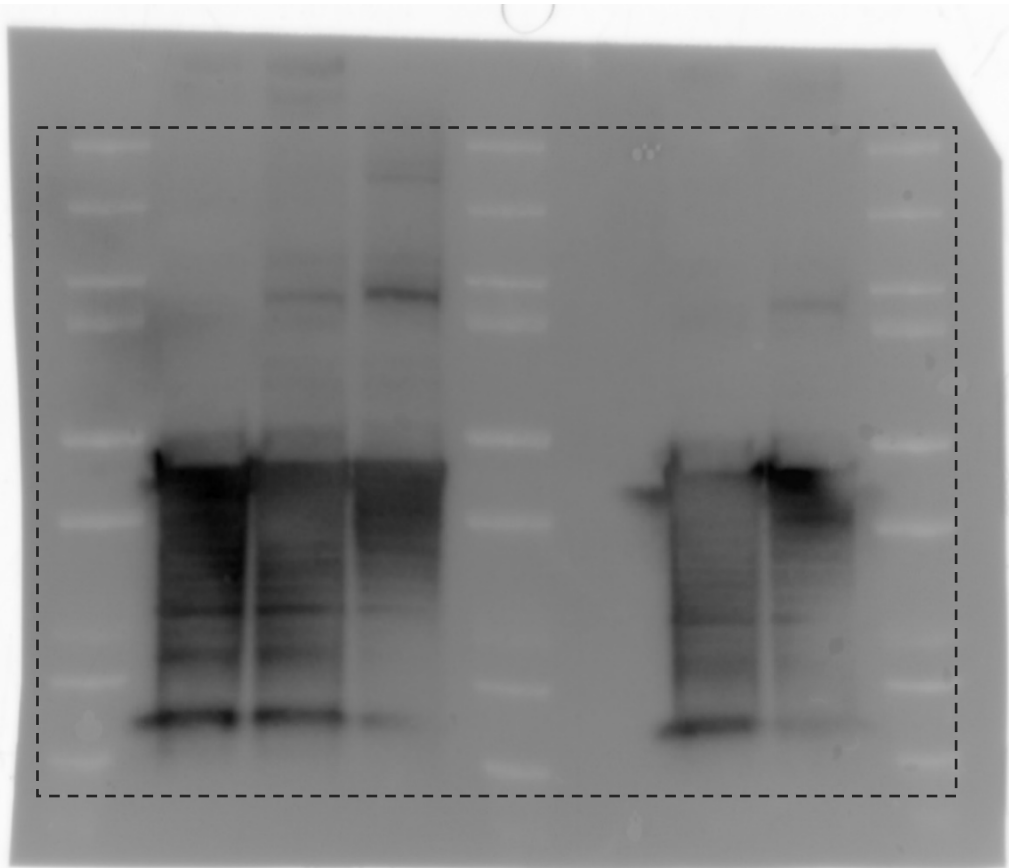
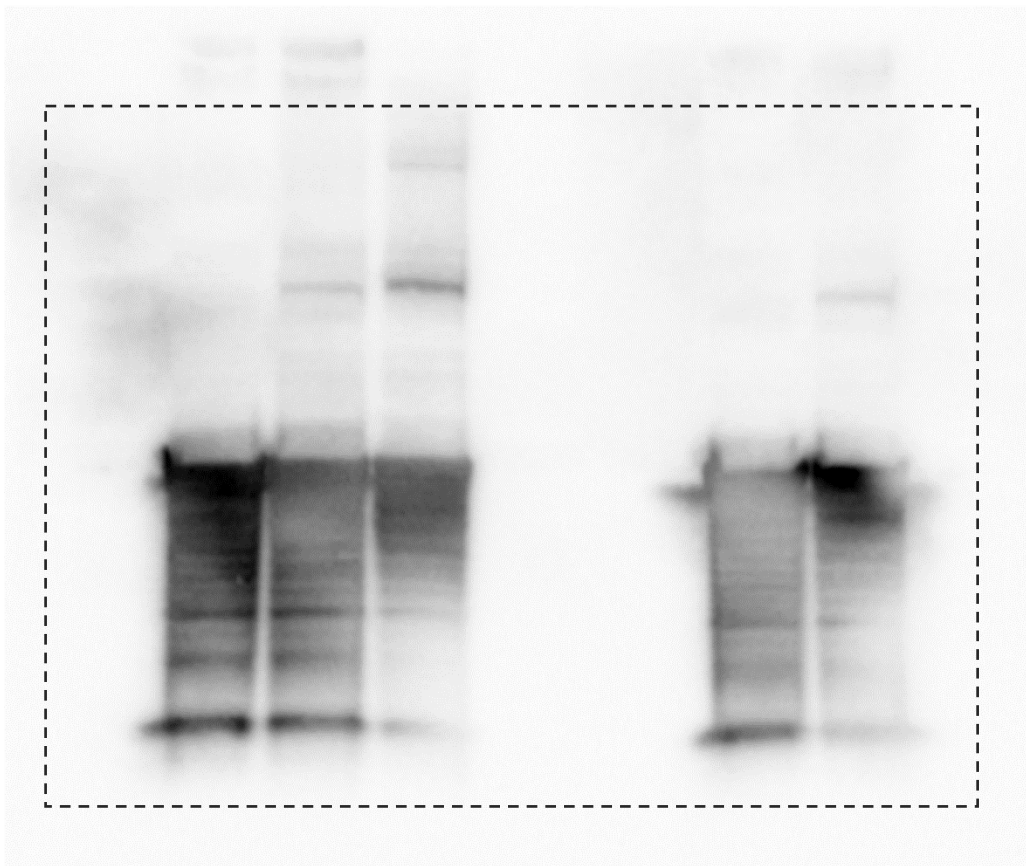


Figure 8B

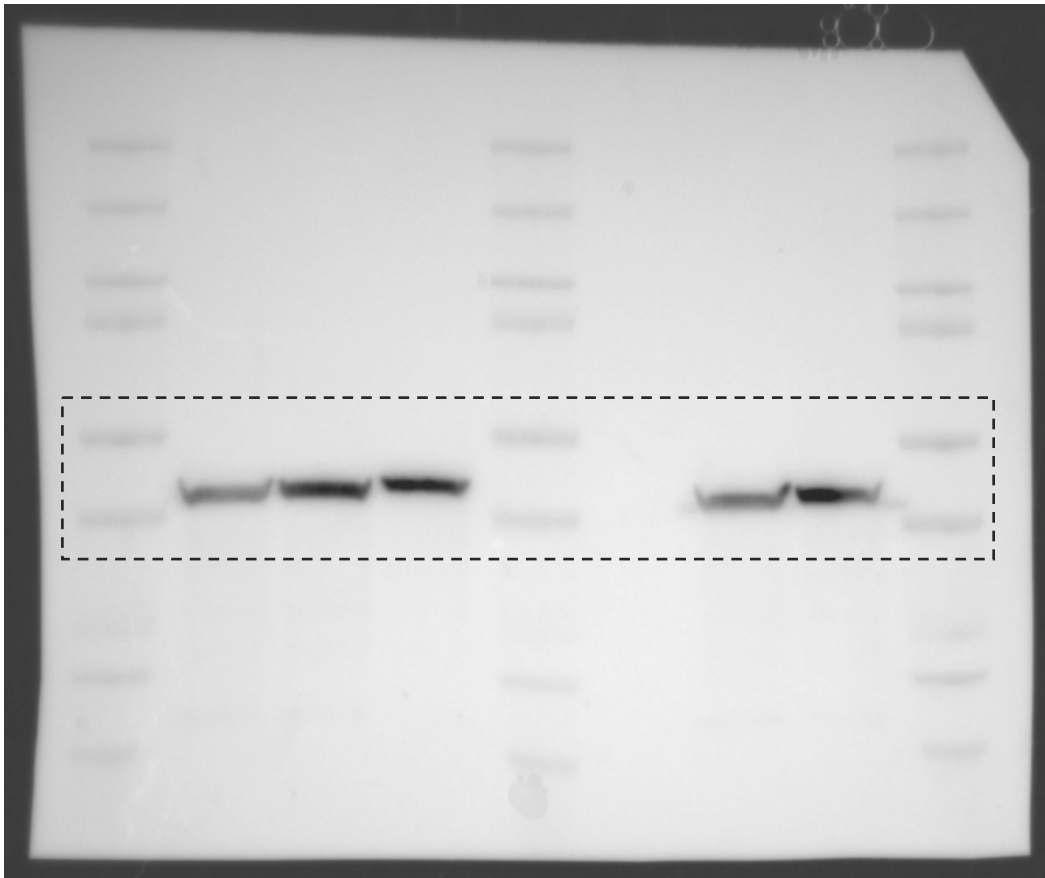
Uncropped Western Blot acquisition of the experiment presented in Fig. 8B. The rectangle with dotted line represents the image presented in the article



IB: α -Syn MJFR1 1:10000 (with MW markers)



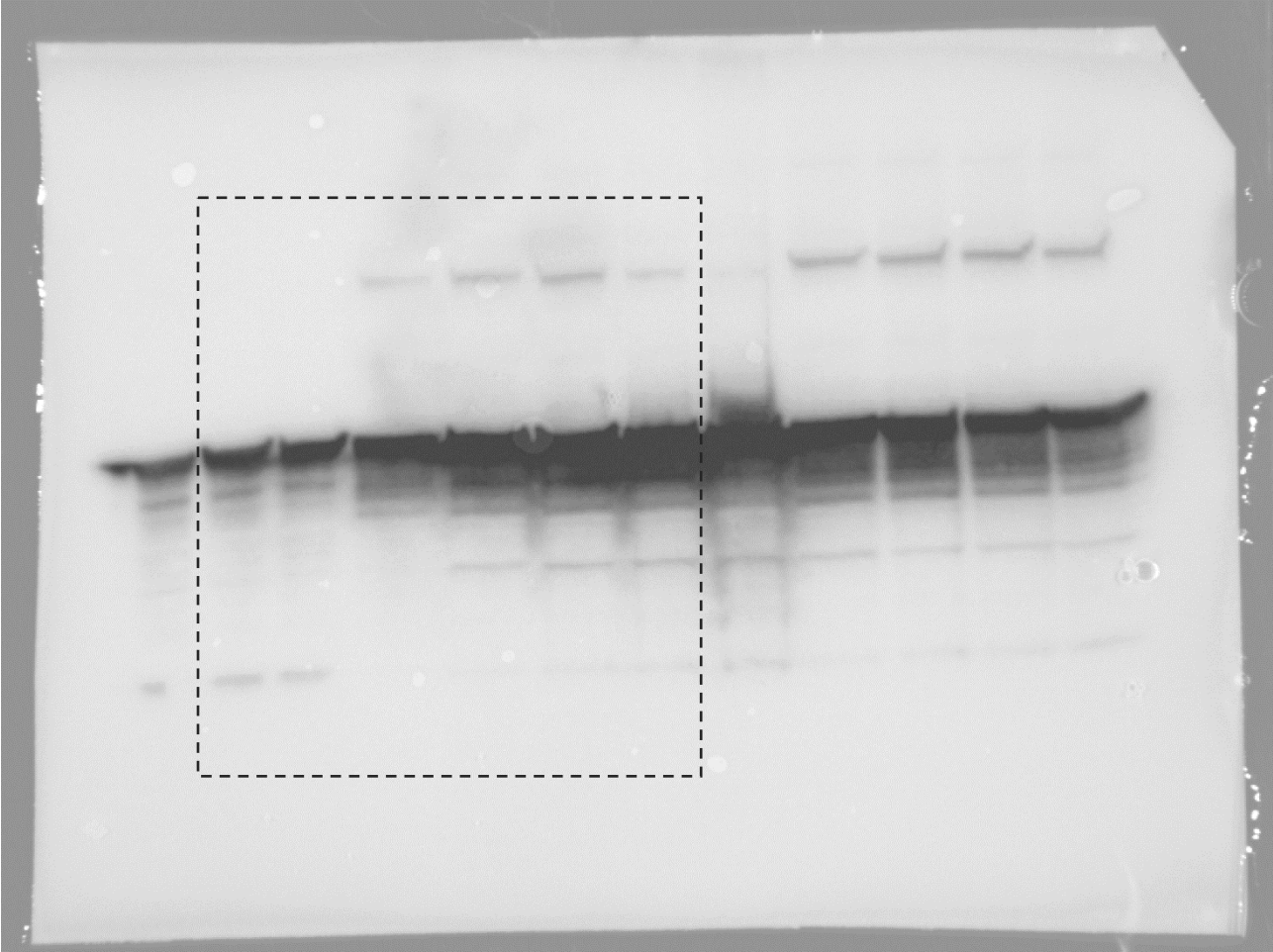
IB: α -Syn MJFR1 1:10000 (without MW markers)



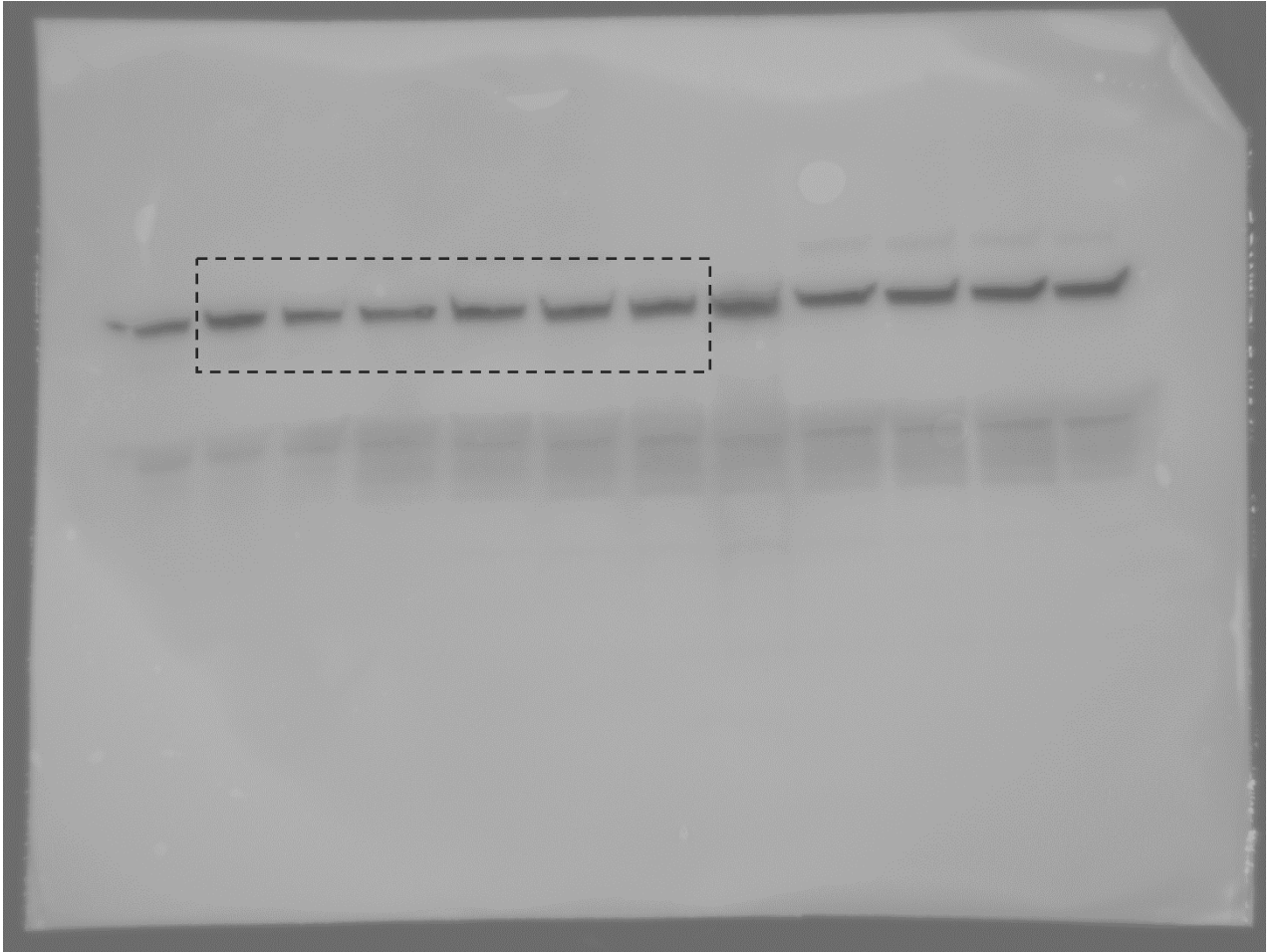
IB: Actin

Figure 8C

Uncropped Western Blot acquisition of the experiment presented in Fig. 8C. The rectangle with dotted line represents the image presented in the article.



IB: α -Syn MJFR1 1:10000



IB: HSP70